



Arizona Department of Forestry and Fire Management
Bureau of Indian Affairs: Navajo, Southwest, Western Region
Bureau of Land Management: Arizona, New Mexico
National Park Service, Intermountain Region
New Mexico Forestry Division
U.S. Fish and Wildlife Service, Southwest Region
U.S. Forest Service, Southwestern Region



Date: November 29, 2021

To: Wildland Fire and Dispatch Community

From: Southwest Coordinating Group (SWCG)

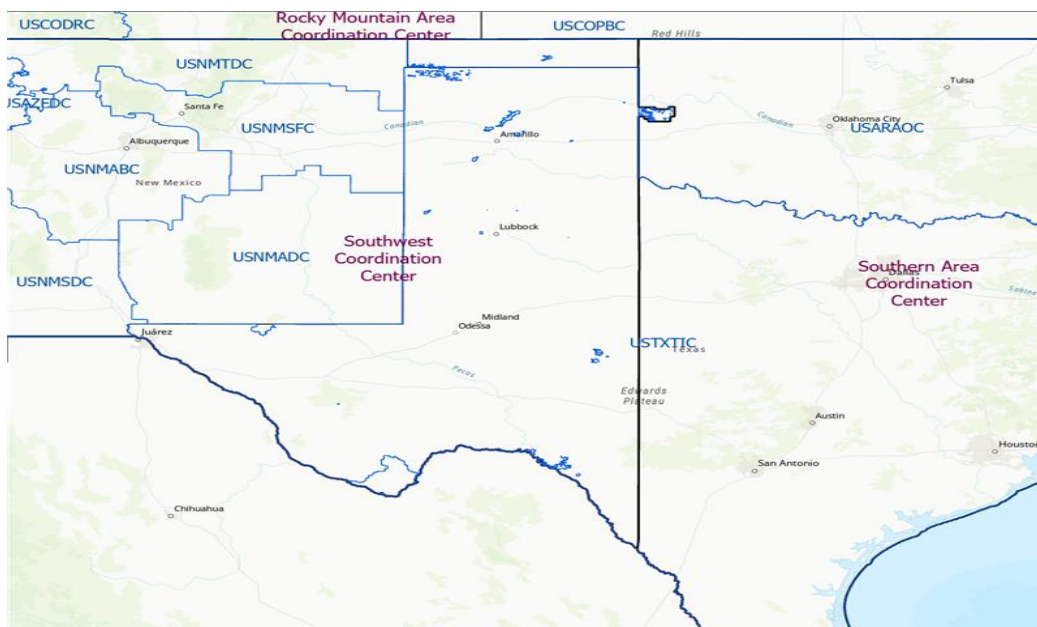
Subject: GA Boundary Change and Implementation

Background

The Southern and Southwest Geographic Areas (GA) boundary follows the 100th meridian of longitude in West Texas up through the panhandle area of Oklahoma. Federal lands west of this line in Texas (TX) and Oklahoma (OK) have traditionally been within the Southwest GA for incident response and dispatch, however, all state and private lands west of the line have been managed by the Southern GA. This has created several issues and hardships related to communications and dispatching.

The current boundary and Department of Interior (DOI) units in West TX and OK within the Southwest GA are listed below.

Current GA Boundary



Impacted DOI Units in West TX and OK (currently within the Southwest GA)

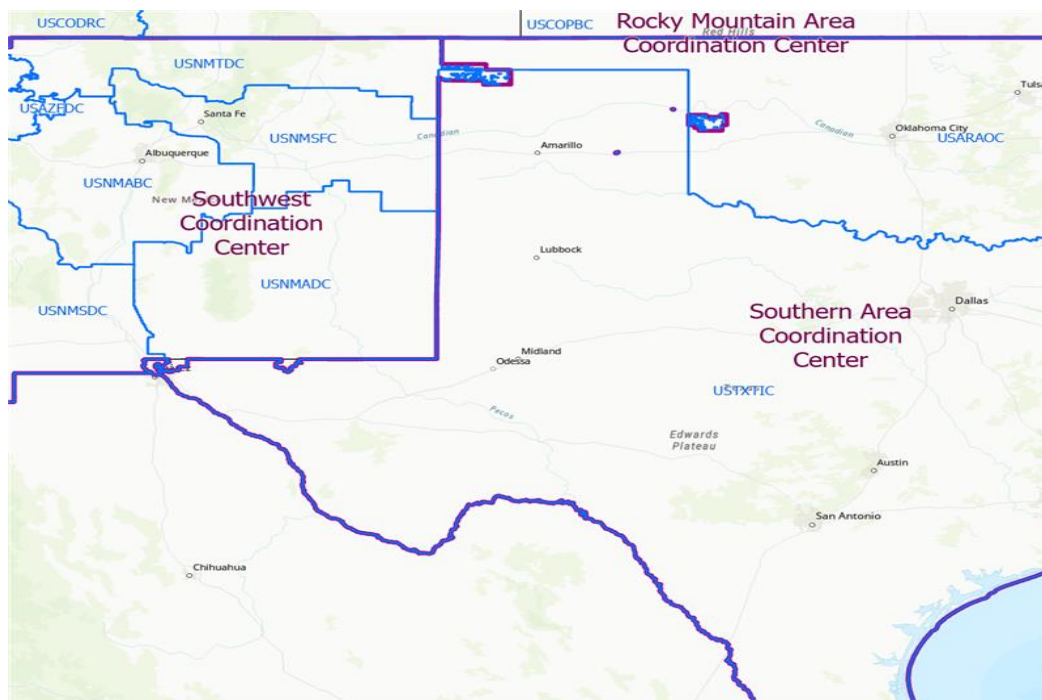
Amarillo BLM (TX-AMD)	NM-ABC
Lake Meredith NRA NPS (TX-LAP)	NM-ABC
Buffalo Lake NWR (TX-BFR)	NM-ABC
Muleshoe NWR FWS (TX-MLR)	NM-ABC
Optima NWR FWS (OK-OPR)	NM-ABC
Big Bend NPS (TX-BBP)	NM-ADC
Chamizal Nat. Memorial NPS (TX-CHP)	NM-ADC
Ft. Davis Historic Site NPS (TX-FDP)	NM-ADC
Amistad NRA NPS (TX-AMP)	NM-ADC

GA Boundary Change and Implementation Plan

The Southwest and Southern Geographic Coordinating Groups have been working together and agreed to a realignment that includes the DOI units in West TX and OK (listed above) to move into the Southern GA. The Guadalupe Mtns National Park and Kiowa/Black Kettle National Grasslands administered by the Cibola NF will remain in the Southwest GA.

An implementation team has been regularly meeting to ensure a smooth transition. The boundary change should increase efficiency by reducing overlap between the two areas and only one dispatch center responsible for taking action. This change should also lead to increased coordination of incident response by both Federal and State resources in these areas under one supporting dispatch center.

New GA Boundary



The change will occur the week of Jan 10, 2022 and the implementation team will be contacting the data stewards and/or points of contact for all affected applications. New boundary layers will be made

available as applicable for these systems to include the assignment of initial attack frequencies to the affected areas. The Southwest Coordinating Group appreciates the implementation efforts by the Alamogordo, Albuquerque, Texas, and Arkansas/Oklahoma Interagency Dispatch Centers and both the Southern and Southwest Coordination Centers. We also appreciate the coordination between fire leadership on these affected units and look forward to a successful transition.

Jacob Nuttall

Chair – SWCG