

Southwest Area Seasonal Outlook February – May 2026

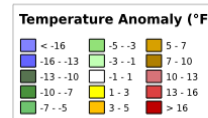
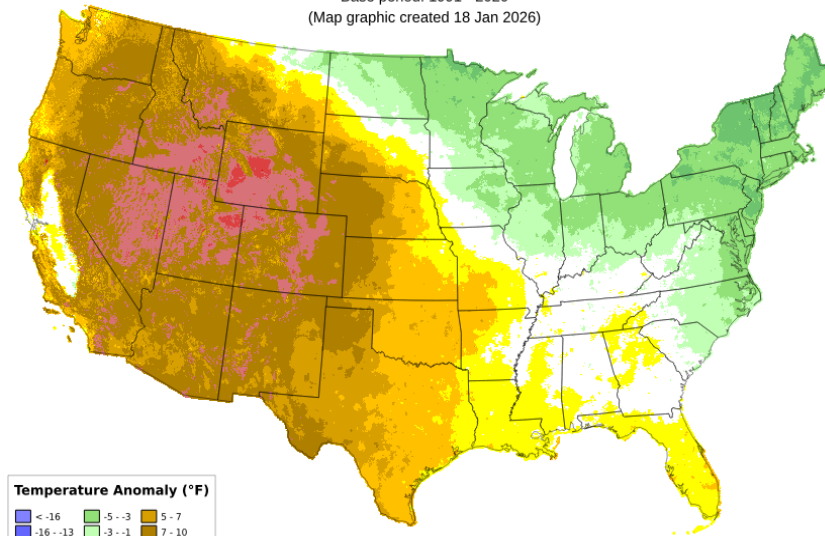


Gina Palma – Predictive Services Meteorologist

TEMP/PRECIP ANOMS and PATTERNS

MEAN TEMPERATURE ANOMALY

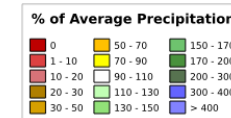
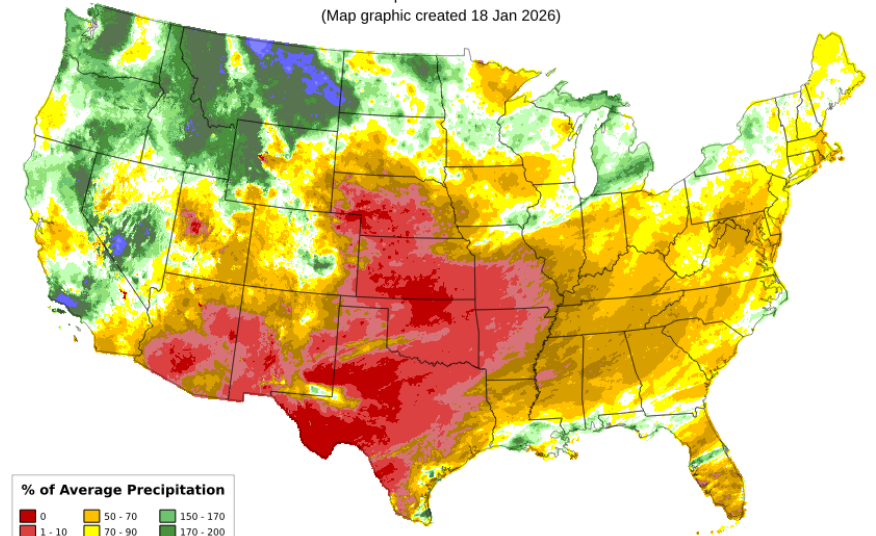
Daily Mean Temperature Anomaly: Dec 2025
Period ending 7 AM EST 31 Dec 2025
Base period: 1991 - 2020
(Map graphic created 18 Jan 2026)



Copyright © 2026 PRISM/NACSE, Oregon State University

PRECIPITATION ANOMALY

Total Precipitation Anomaly: Dec 2025
Period ending 7 AM EST 31 Dec 2025
Base period: 1991 - 2020
(Map graphic created 18 Jan 2026)

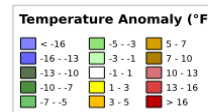
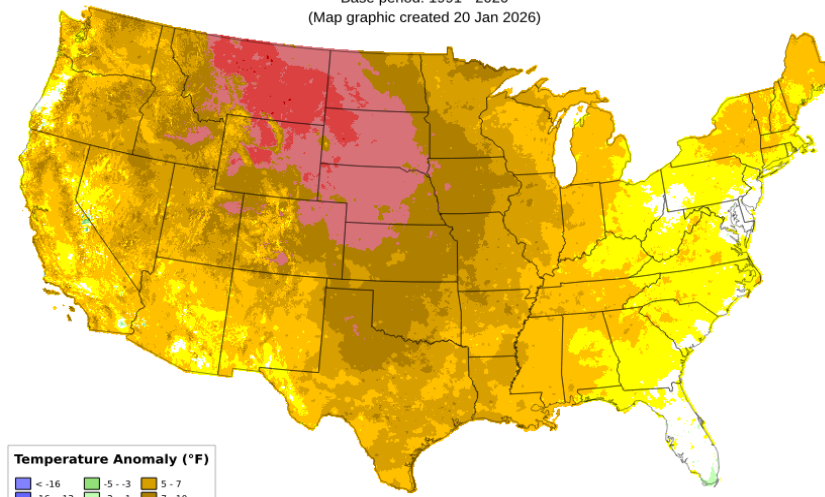


Copyright © 2026 PRISM/NACSE, Oregon State University

ONE MONTH AGO
DECEMBER
TEMPERATURE/PRECIPITATION
ANOMALIES

Daily Mean Temperature Anomaly: 01 Jan 2026 - 19 Jan 2026

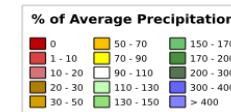
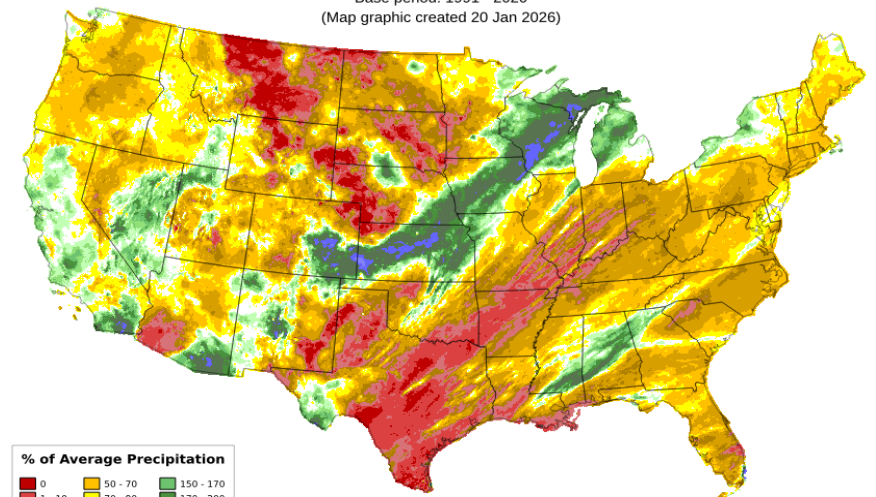
Period ending 7 AM EST 19 Jan 2026
Base period: 1991 - 2020
(Map graphic created 20 Jan 2026)



Copyright © 2026 PRISM/NACSE, Oregon State University

Total Precipitation Anomaly: 01 Jan 2026 - 19 Jan 2026

Period ending 7 AM EST 19 Jan 2026
Base period: 1991 - 2020
(Map graphic created 20 Jan 2026)



Copyright © 2026 PRISM/NACSE, Oregon State University

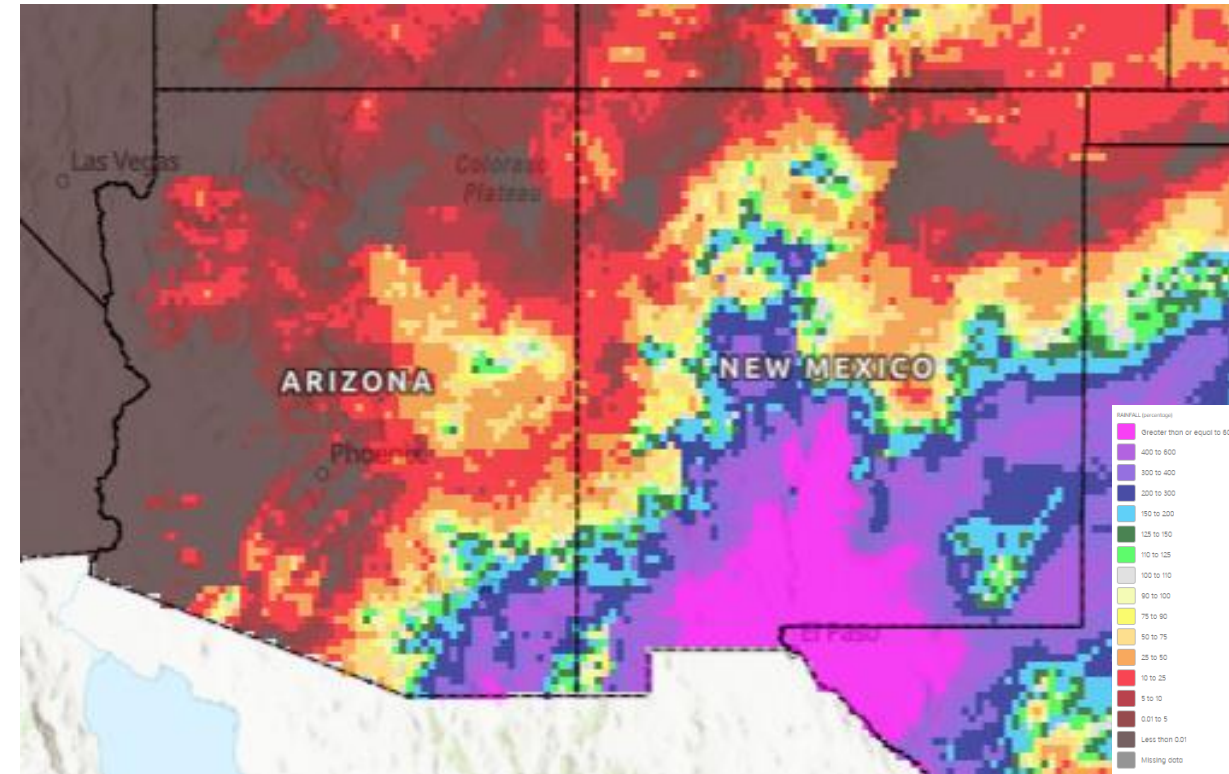
CURRENT MONTH
JANUARY - SO FAR
TEMPERATURE/PRECIPITATION
ANOMALIES

Recent Precipitation

Observed Precipitation – Last 7 Days



Percent of Normal Precipitation – Last 14 Days



Recent 30-Days

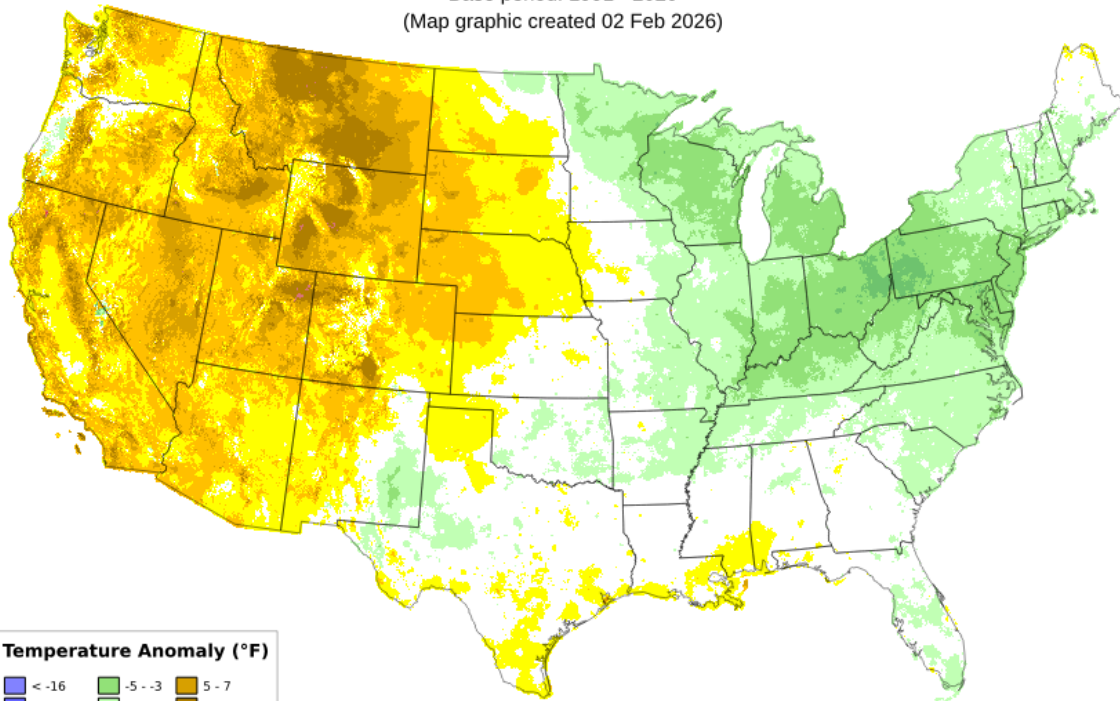
January Temperature Anomaly

Daily Mean Temperature Anomaly: Jan 2026

Period ending 7 AM EST 31 Jan 2026

Base period: 1991 - 2020

(Map graphic created 02 Feb 2026)



Copyright © 2026 PRISM/NACSE, Oregon State University

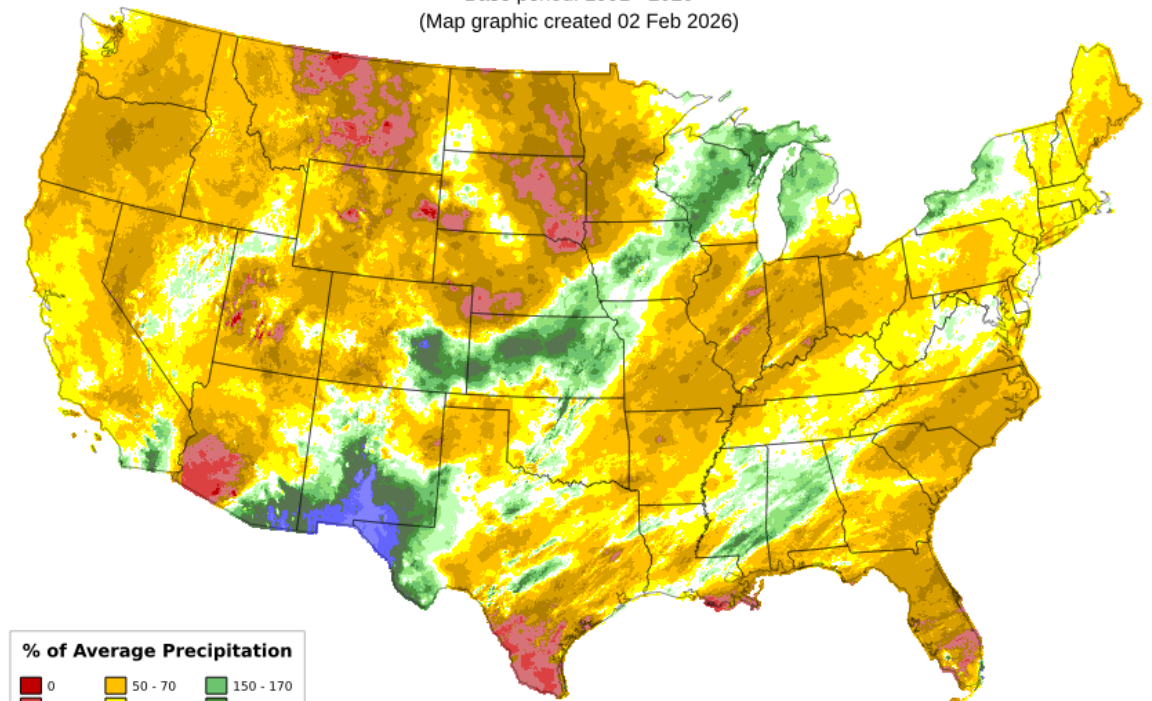
January Precipitation Anomaly

Total Precipitation Anomaly: Jan 2026

Period ending 7 AM EST 31 Jan 2026

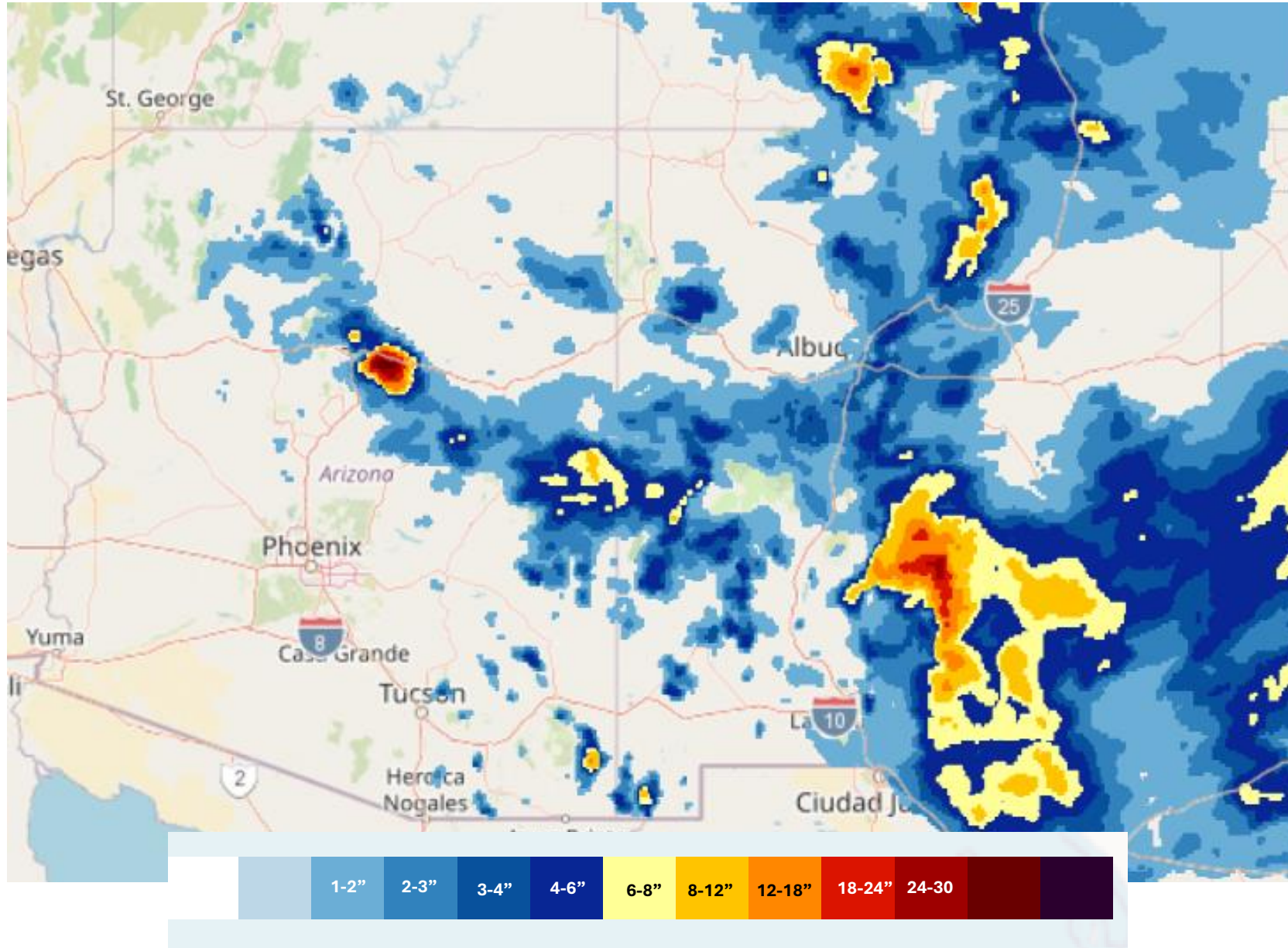
Base period: 1991 - 2020

(Map graphic created 02 Feb 2026)

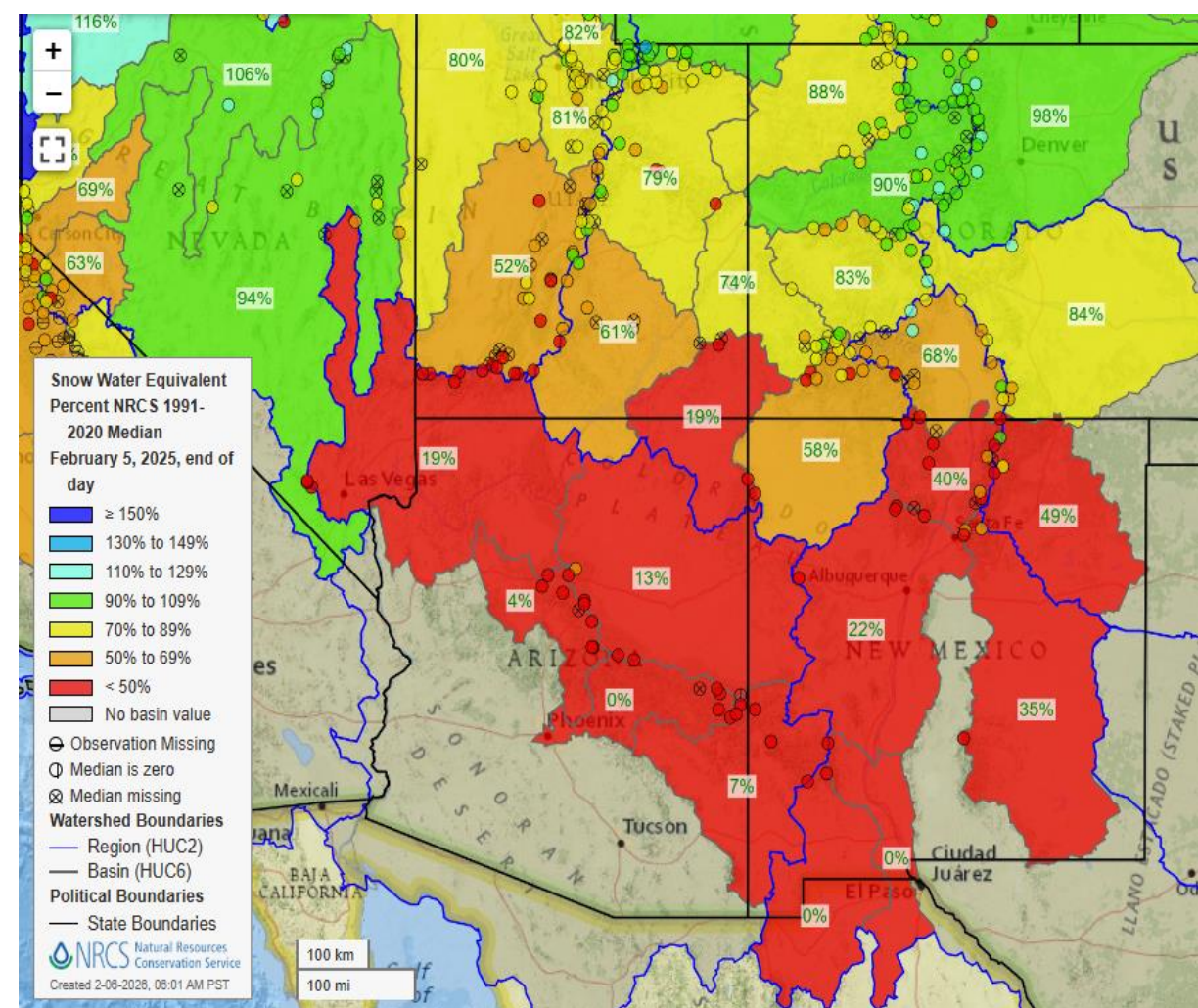
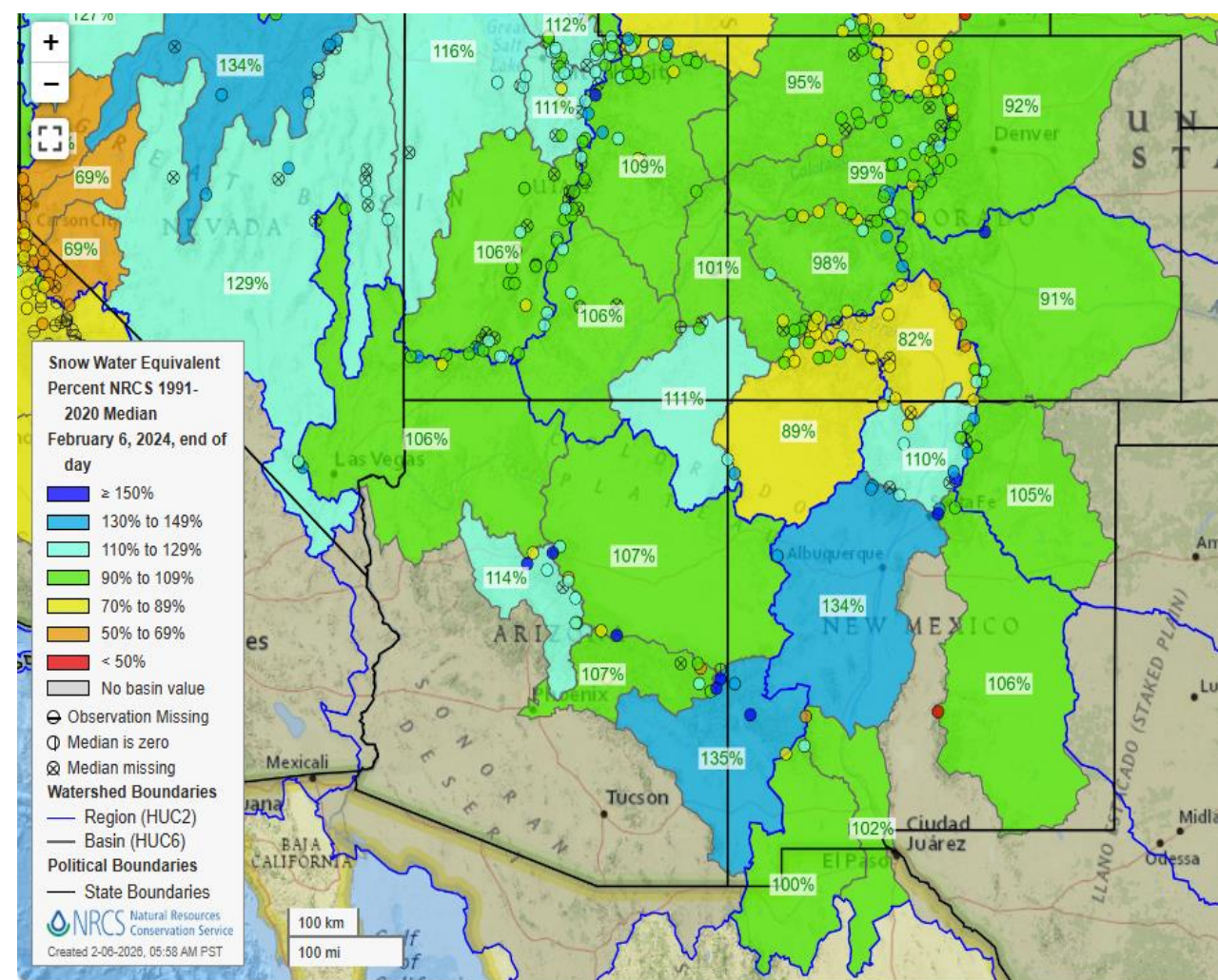


Copyright © 2026 PRISM/NACSE, Oregon State University

Snowfall from Last Weekend



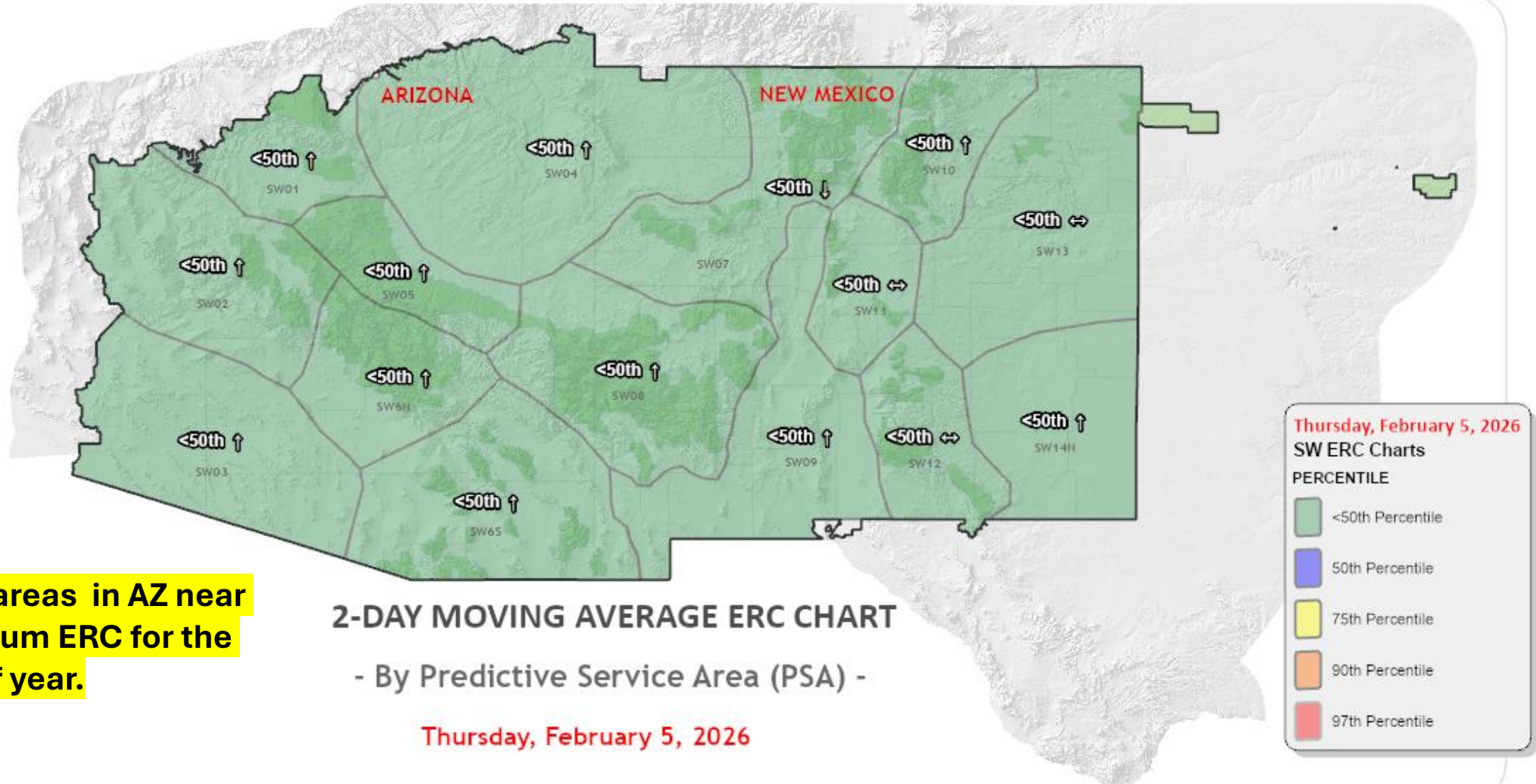
2 Years Ago - Late January 2024 Snowpack Current January 2026 Snowpack



Last time snowpack was normal this time of year was 2024. 2025 was similar to this year.

ERC Charts

SOUTHWEST AREA



Some areas in AZ near maximum ERC for the time of year.

2-DAY MOVING AVERAGE ERC CHART

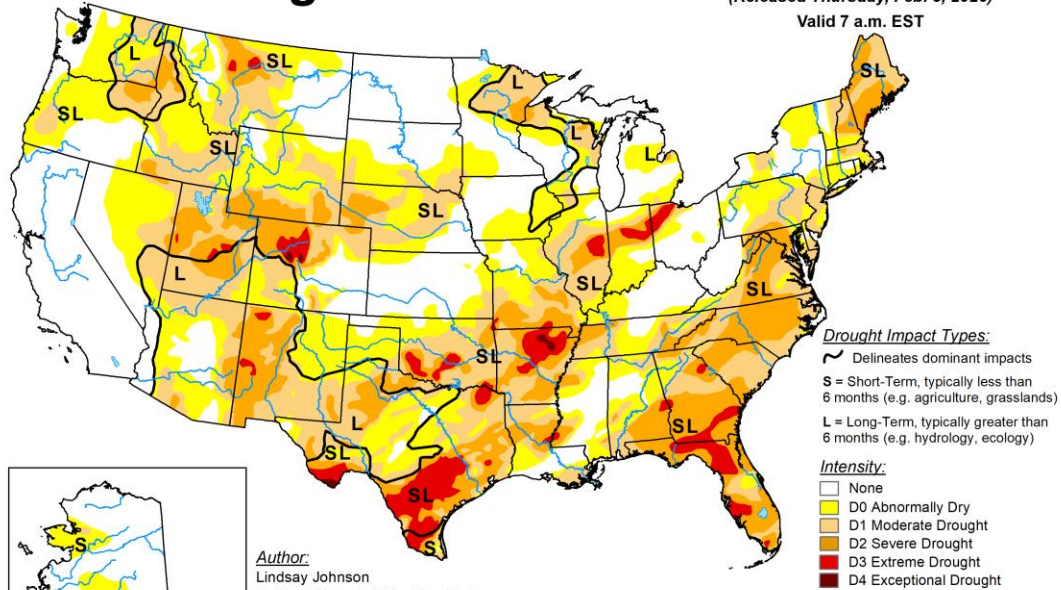
- By Predictive Service Area (PSA) -

Thursday, February 5, 2026

Current Drought Conditions and Monthly Outlook

U.S. Drought Monitor

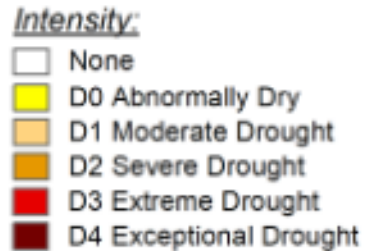
February 3, 2026
(Released Thursday, Feb. 5, 2026)
Valid 7 a.m. EST



The Drought Monitor focuses on broad-scale conditions. Local conditions may vary. For more information on the Drought Monitor, go to <https://droughtmonitor.unl.edu/About.aspx>

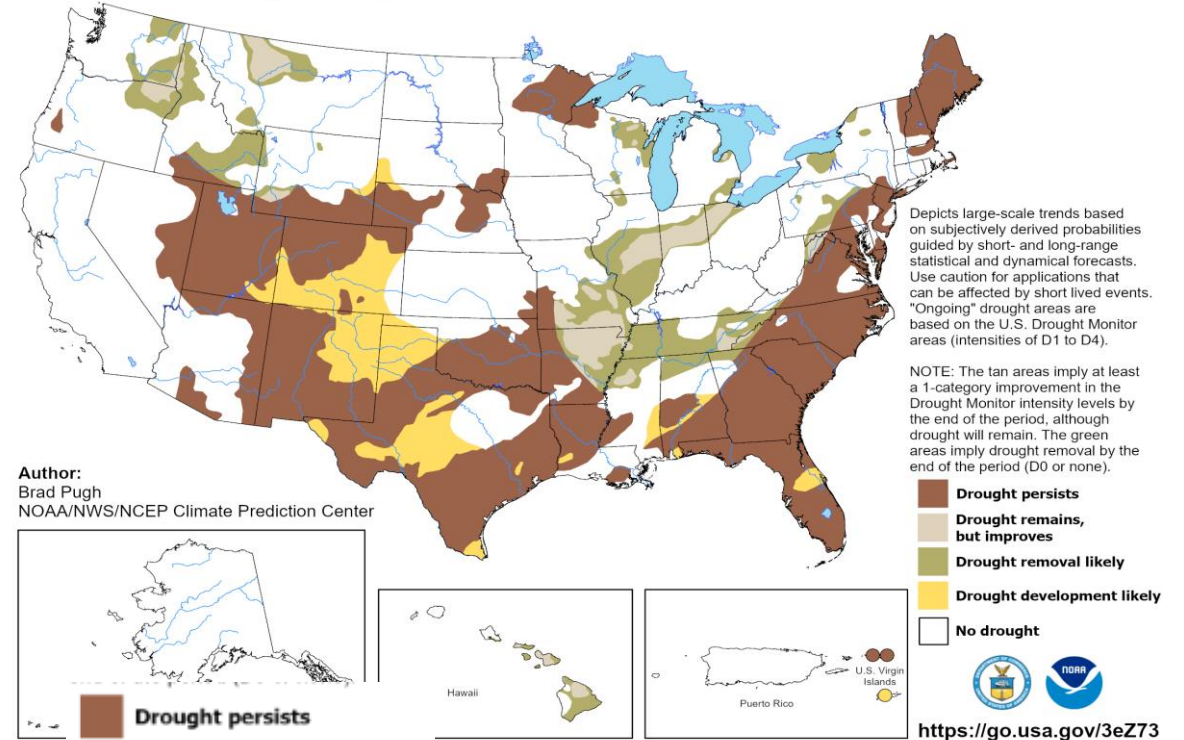


droughtmonitor.unl.edu

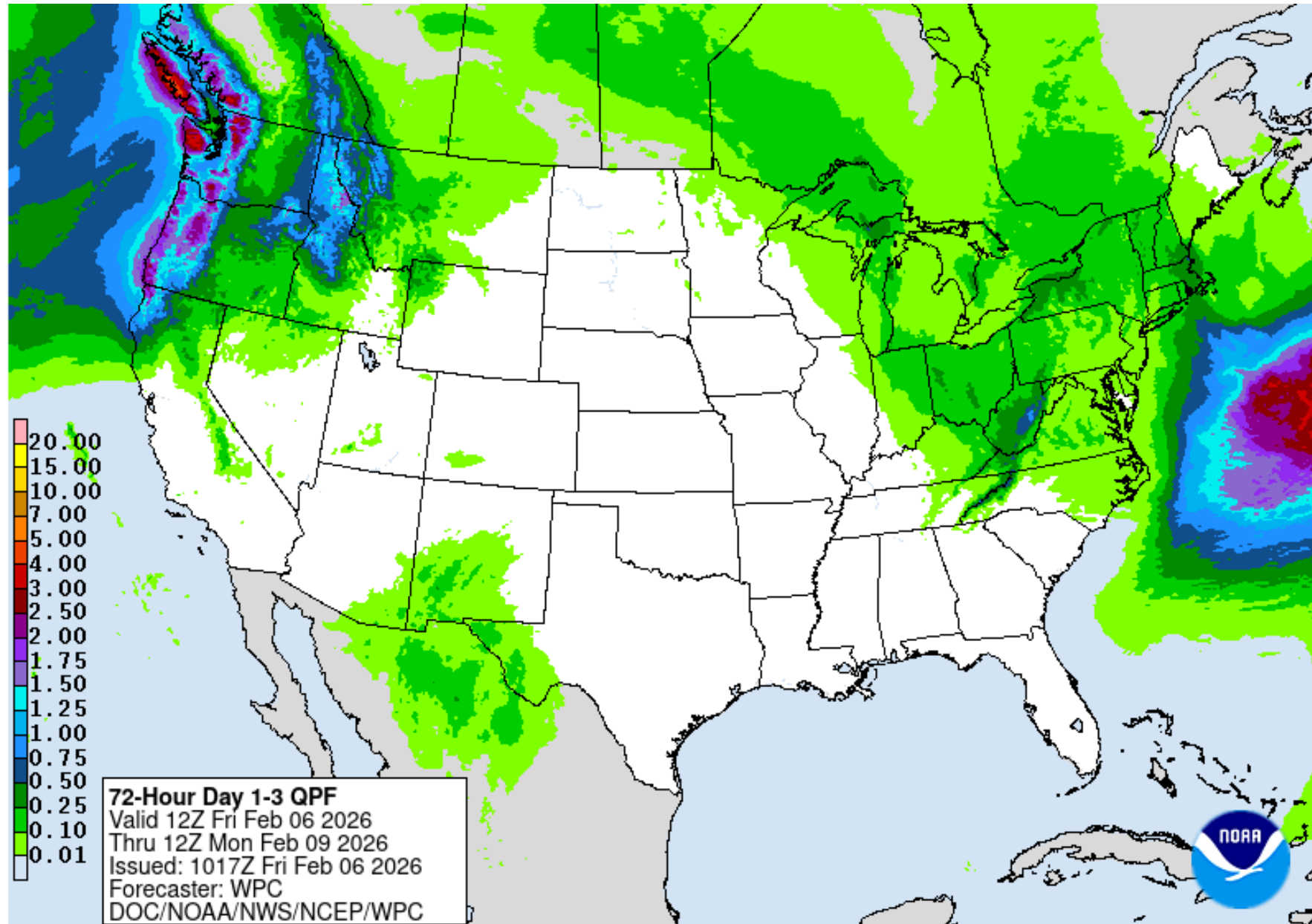


U.S. Seasonal Drought Outlook Drought Tendency During the Valid Period

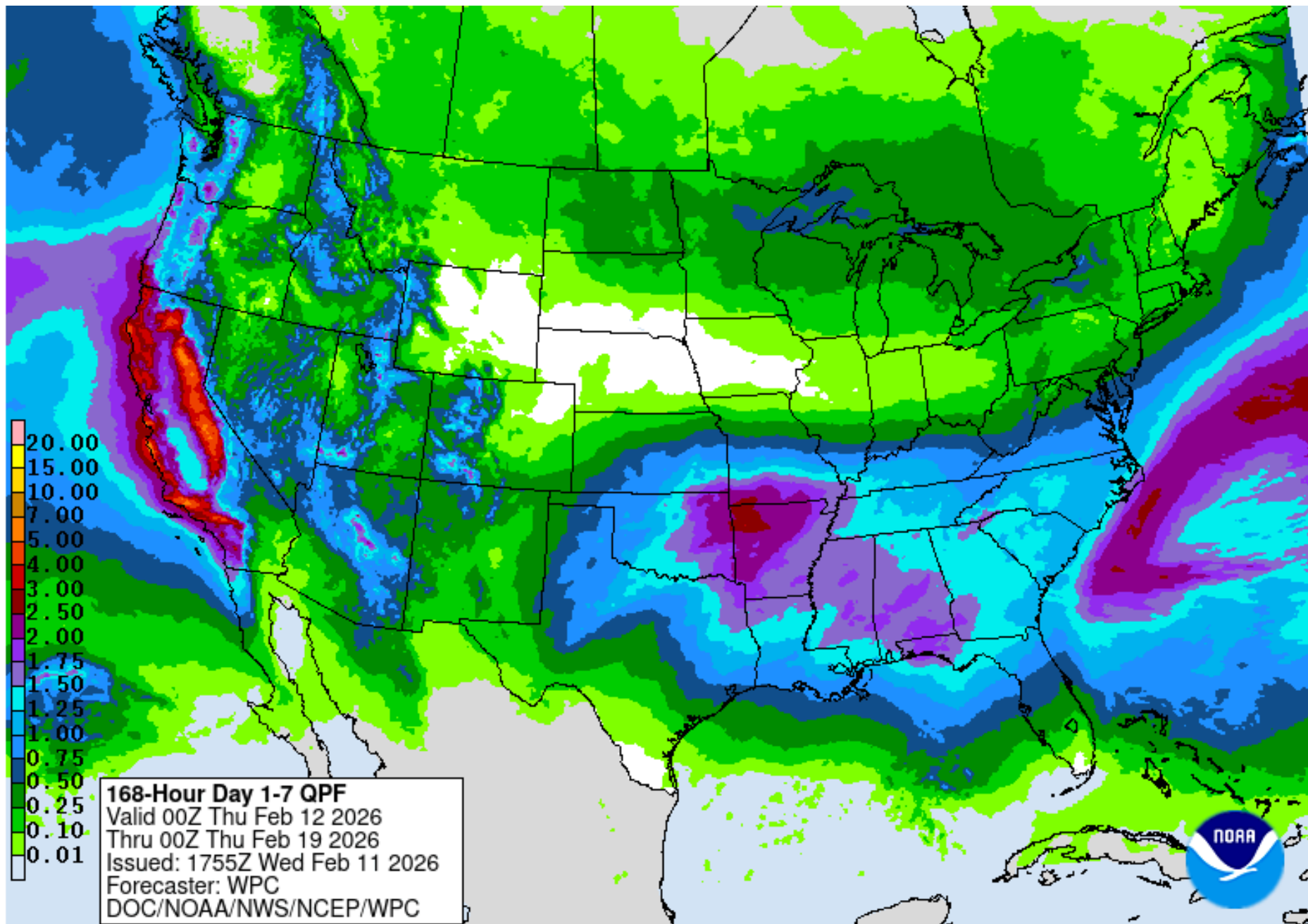
Valid for January 15 - April 30, 2026
Released January 15, 2026



3-Day Precipitation



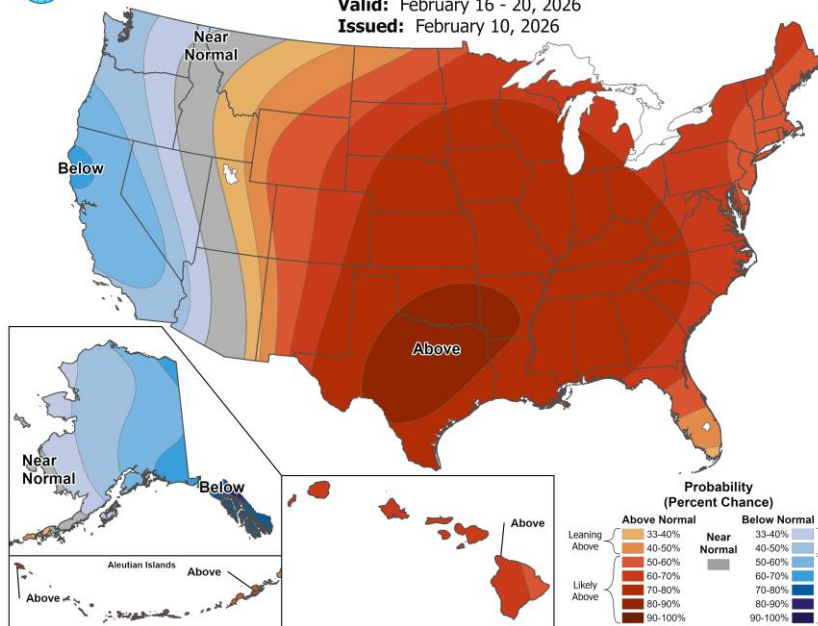
7-DAY NWS Official Precipitation Forecast





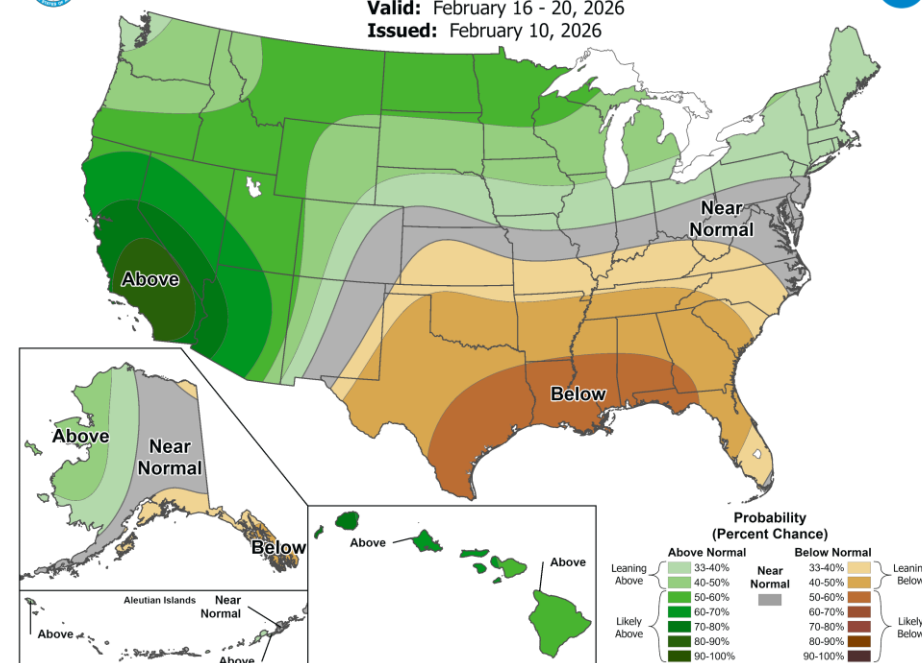
6-10 Day Temperature Outlook

Valid: February 16 - 20, 2026
Issued: February 10, 2026



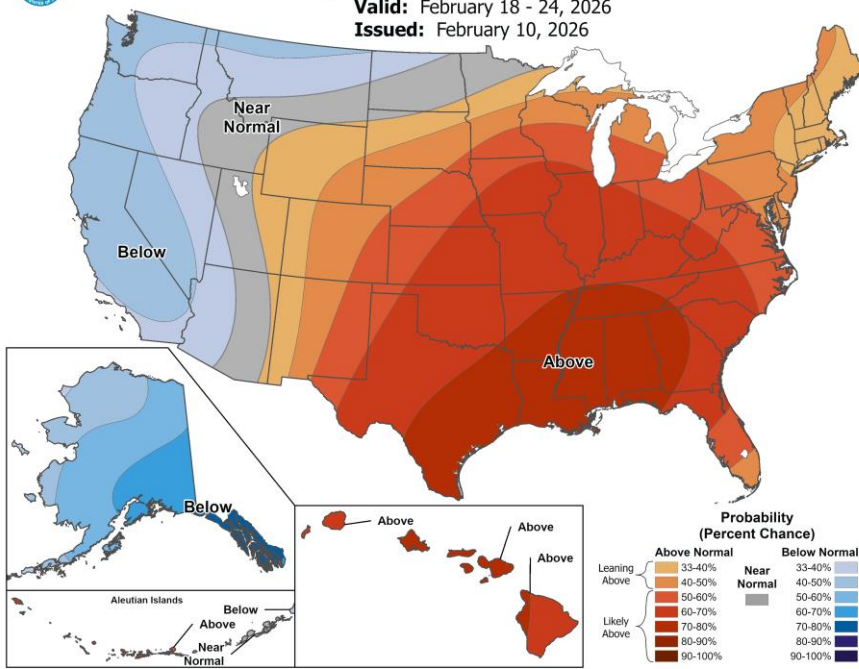
6-10 Day Precipitation Outlook

Valid: February 16 - 20, 2026
Issued: February 10, 2026



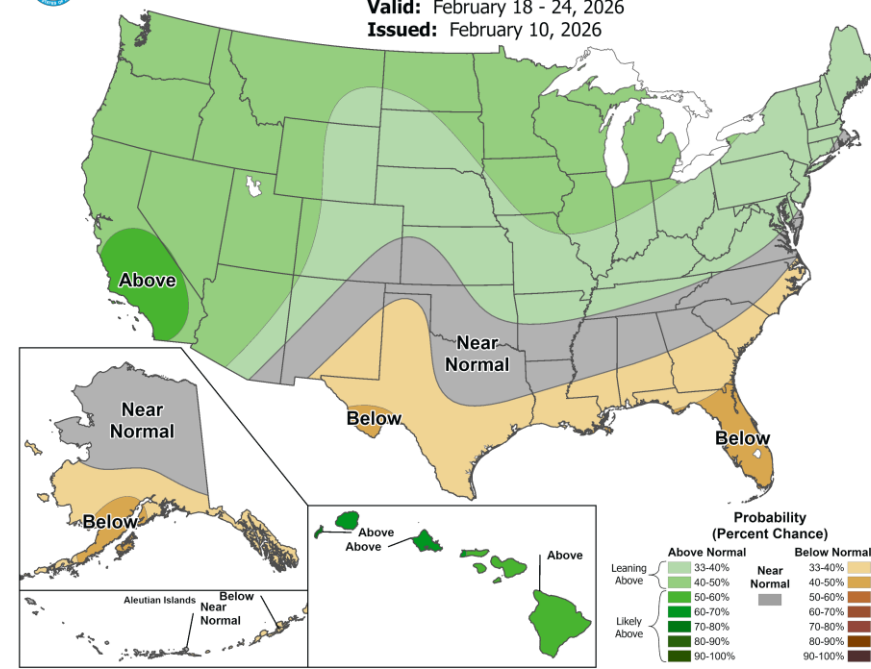
8-14 Day Temperature Outlook

Valid: February 18 - 24, 2026
Issued: February 10, 2026

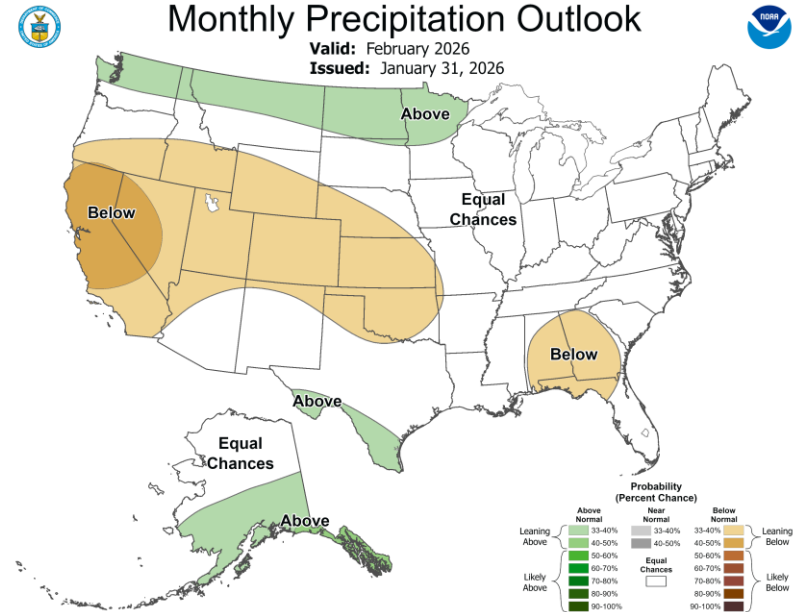
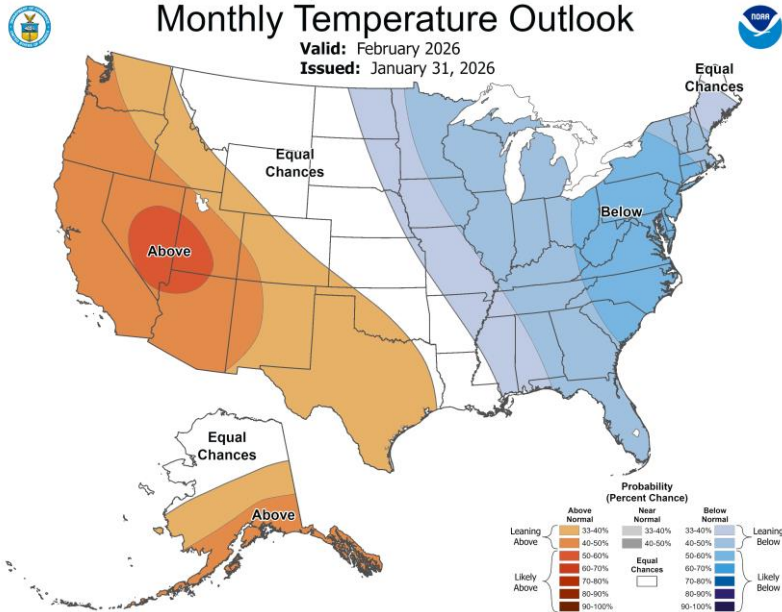
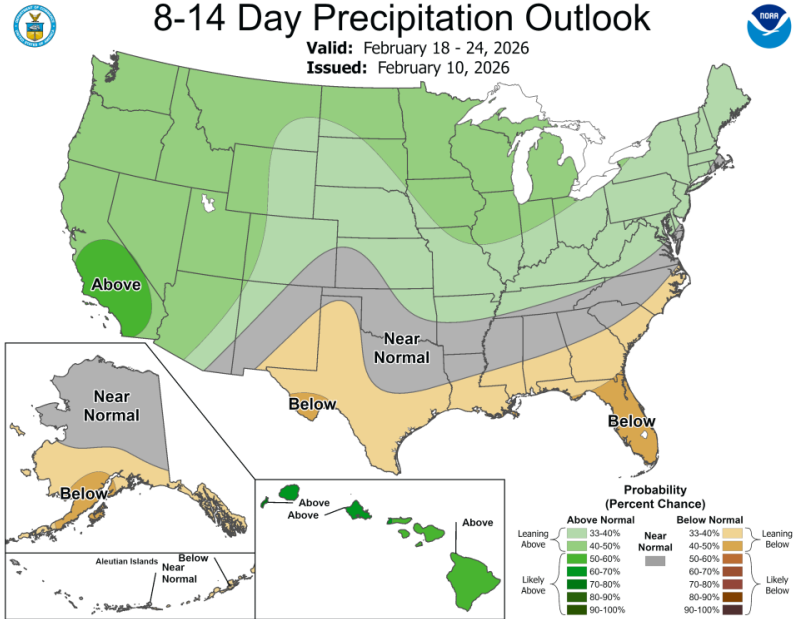
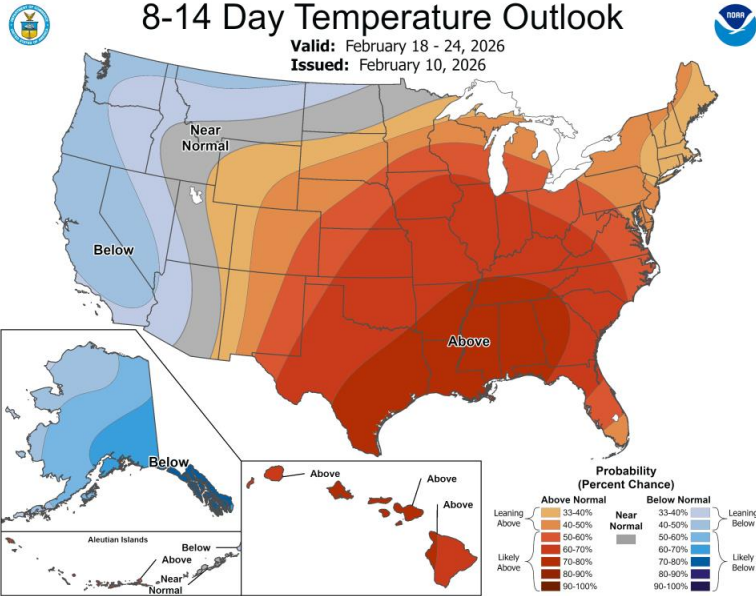


8-14 Day Precipitation Outlook

Valid: February 18 - 24, 2026
Issued: February 10, 2026

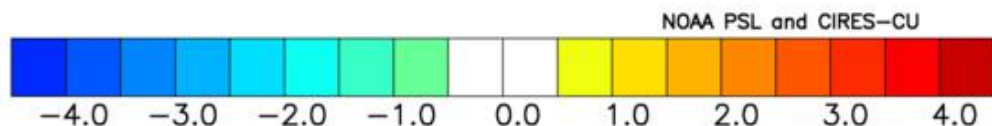
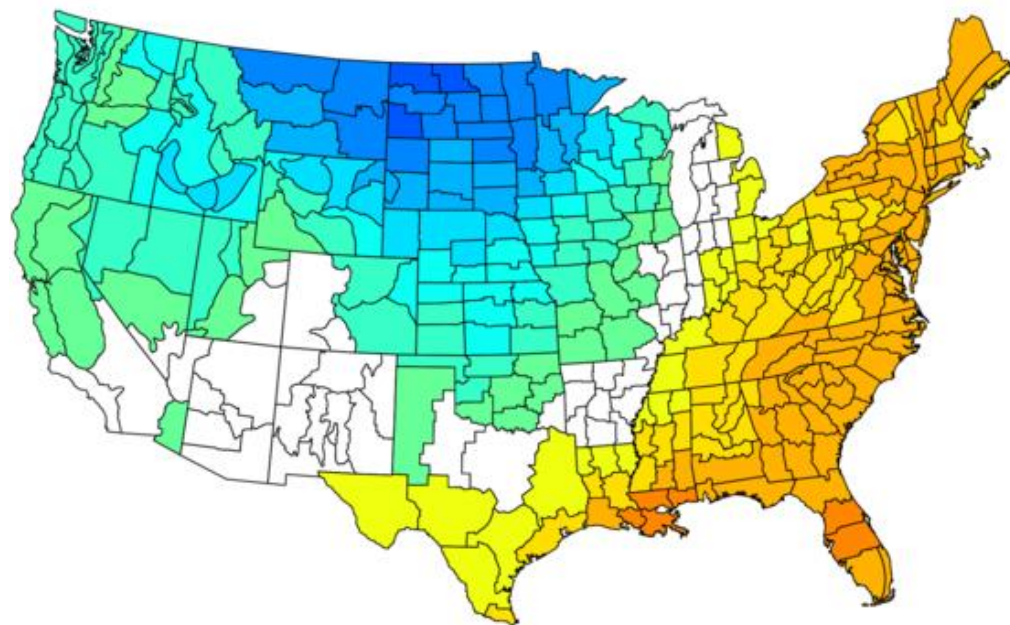


CPC 8-14 Day Compared to February Outlook??

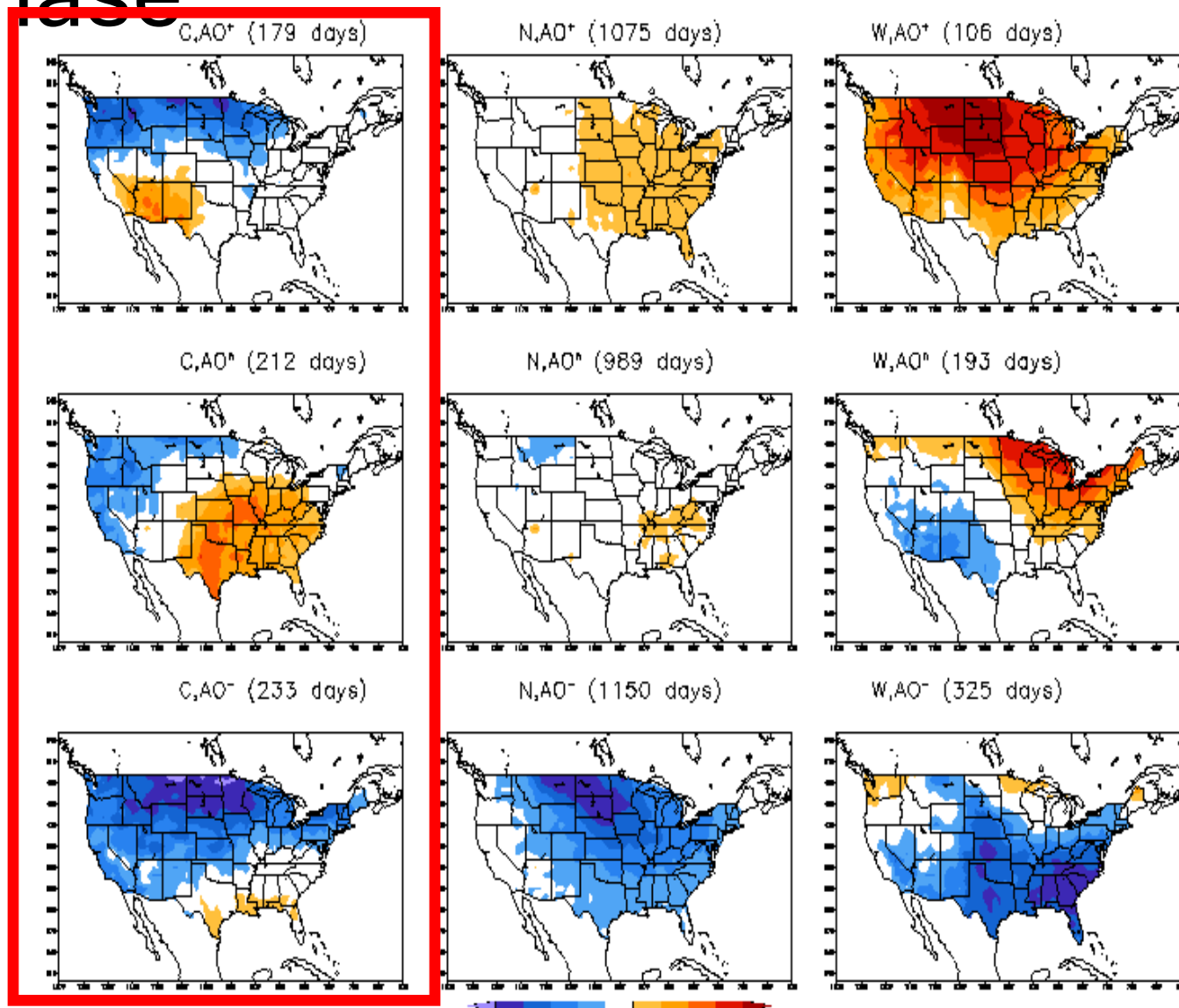


February – Temp Anomalies Based on Analog vs. Cool ENSO/AO Phase

NOAA/NCEI Climate Division Composite Temperature Anomalies (F)
Feb 2001, 2006, 2008, 2009, 2012, 2013, 2018, 2022, 2025
Versus 1991–2020 Longterm Average



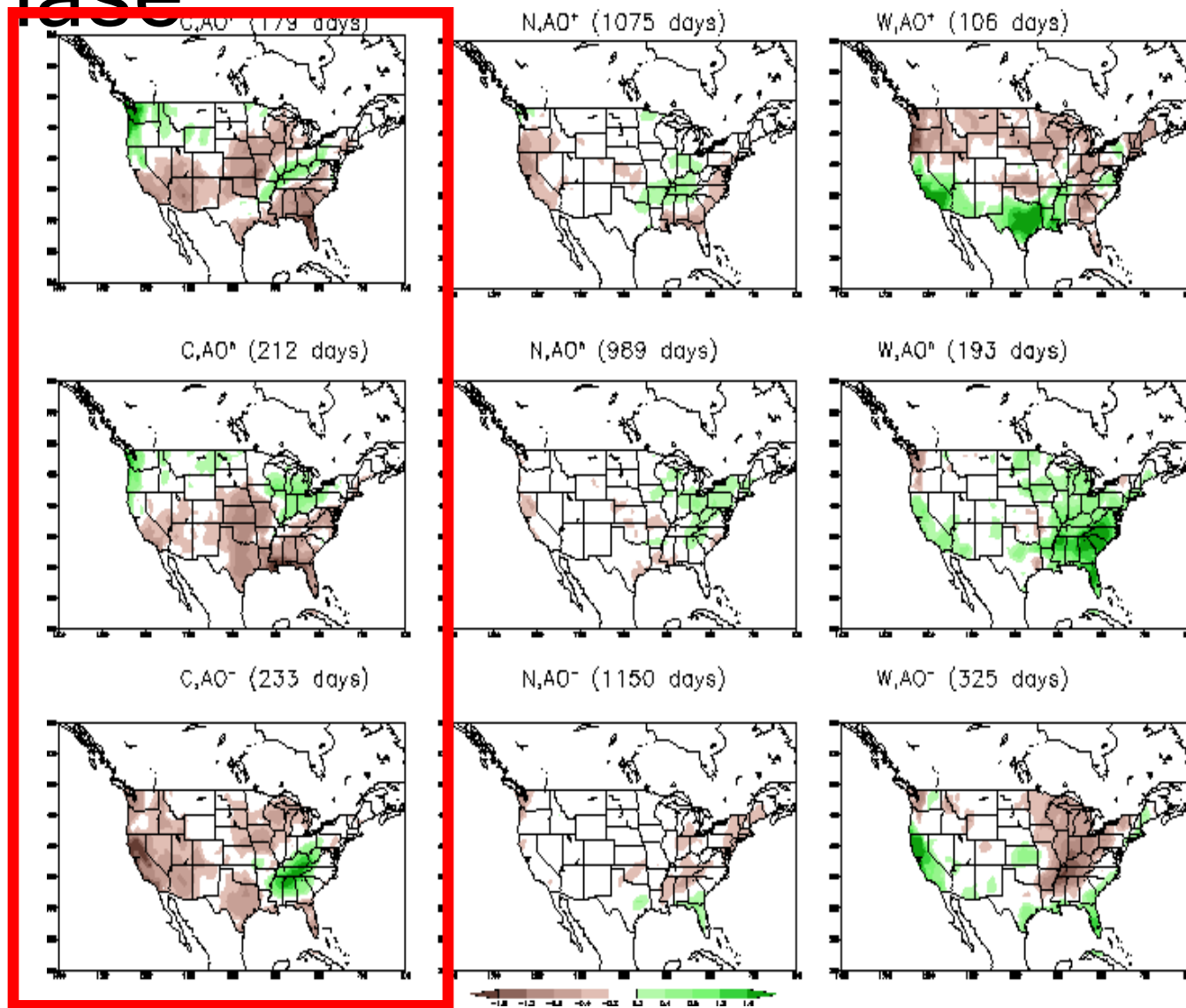
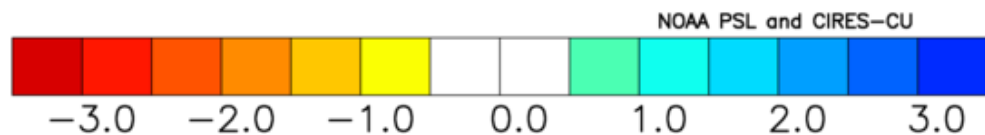
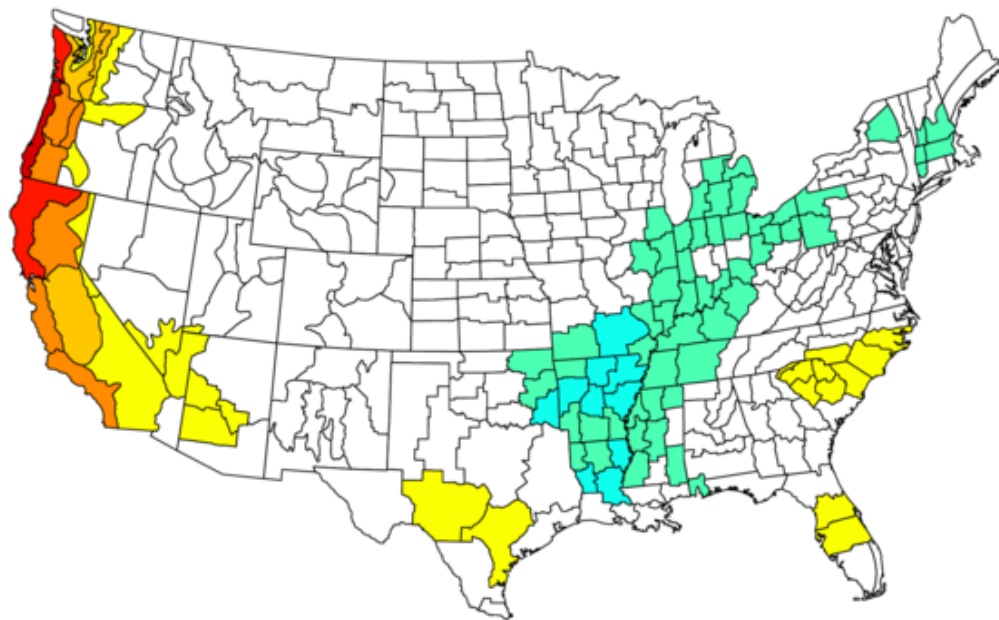
FMA Temperature Anomaly (°C) by ENSO and AO Phase



February – Precip Anomalies Based on Analog vs. Cool ENSO/AO Phase

FMA Precipitation Anomaly (mm/day) by ENSO and AO Phase

NOAA/NCEI Climate Division Composite Precipitation Anomalies (in)
Feb 2001, 2006, 2008, 2009, 2012, 2013, 2018, 2022, 2025
Versus 1991–2020 Longterm Average



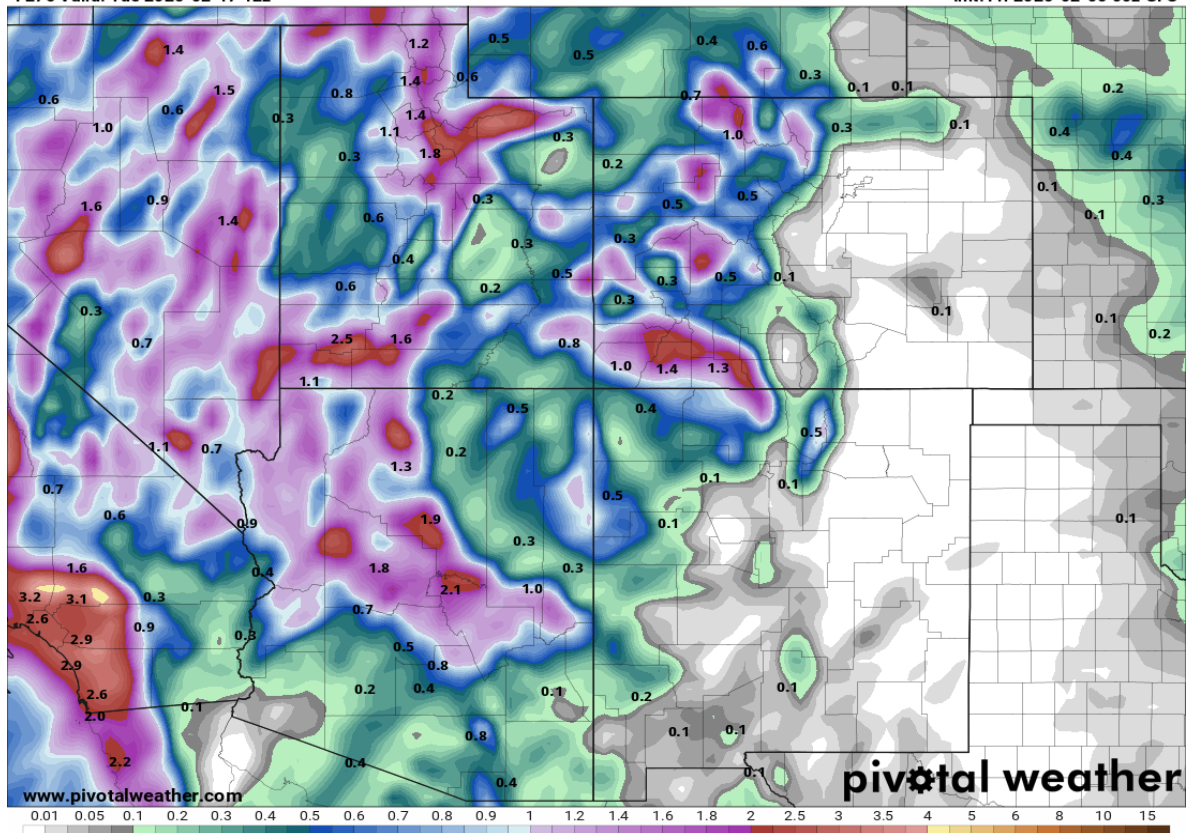
Next Chance of Precipitation.. Next Week?

Total Precipitation Forecast through Monday, Feb. 16th

GFS

Total QPF (in)
F276 Valid: Tue 2026-02-17 12z

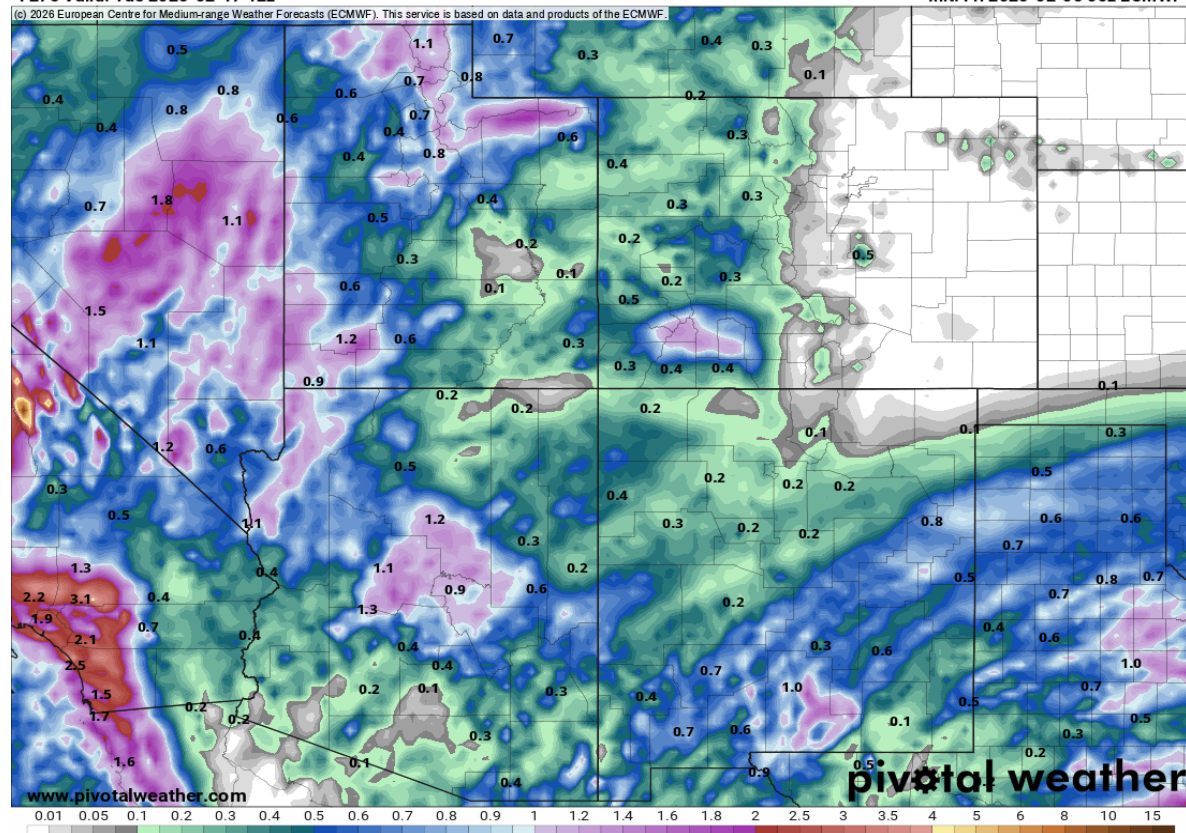
Init: Fri 2026-02-06 00z GFS



European

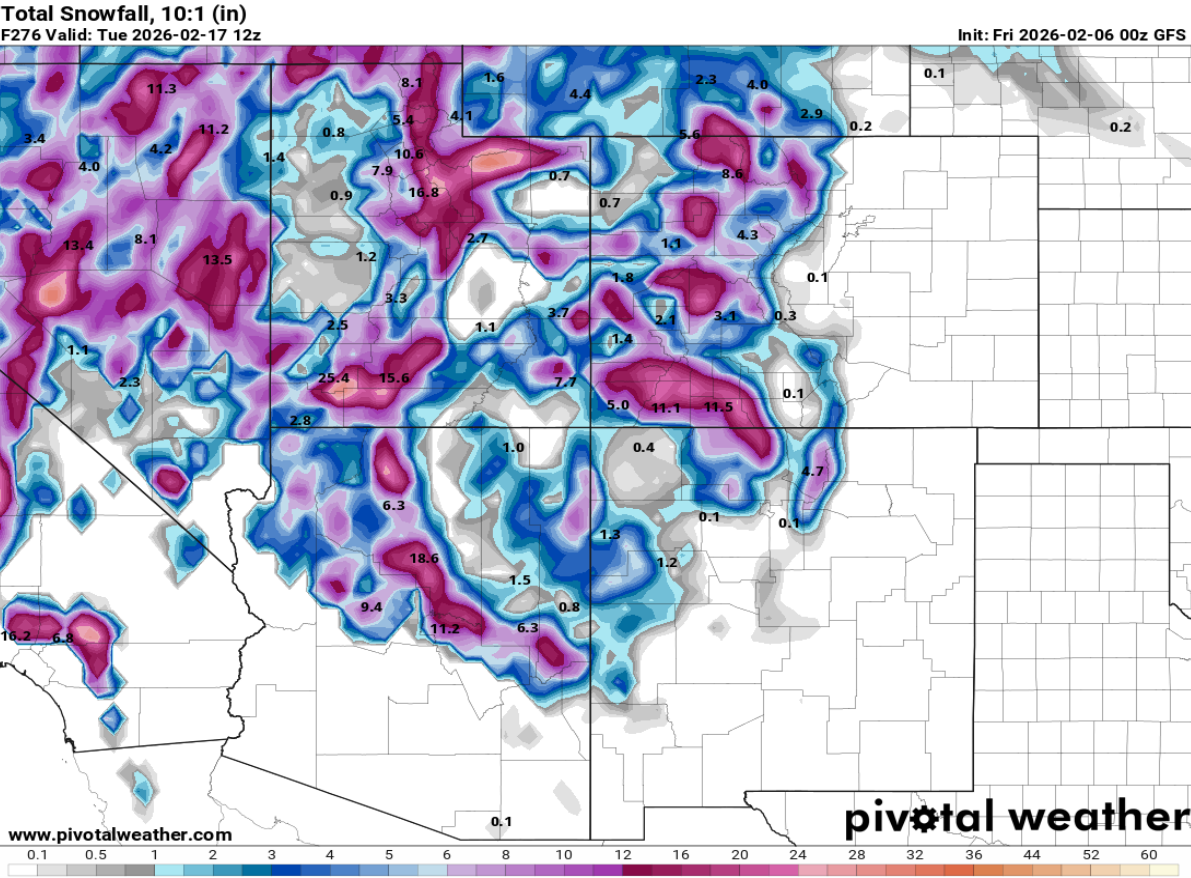
Total QPF (in)
F276 Valid: Tue 2026-02-17 12z

Init: Fri 2026-02-06 00z ECMWF

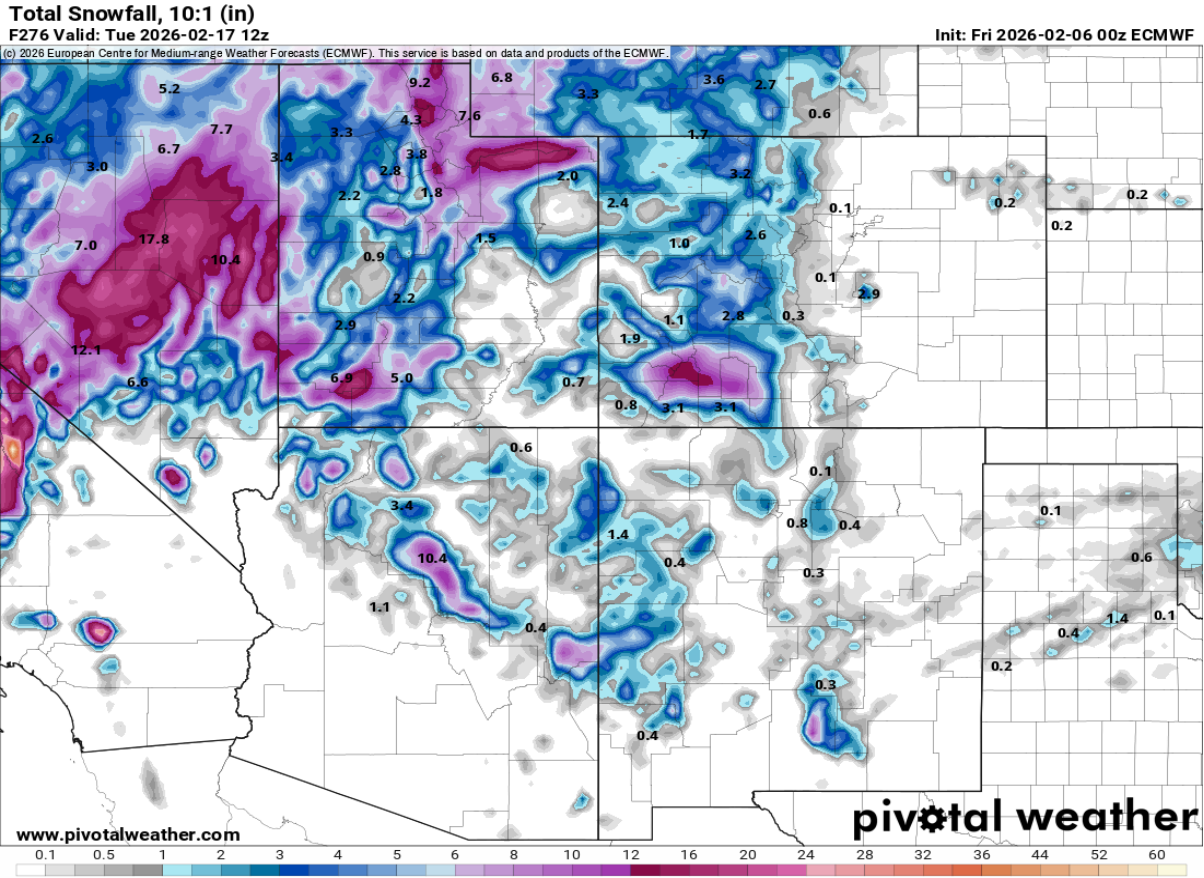


Total Forecast Snowfall through Feb. 16th

GFS



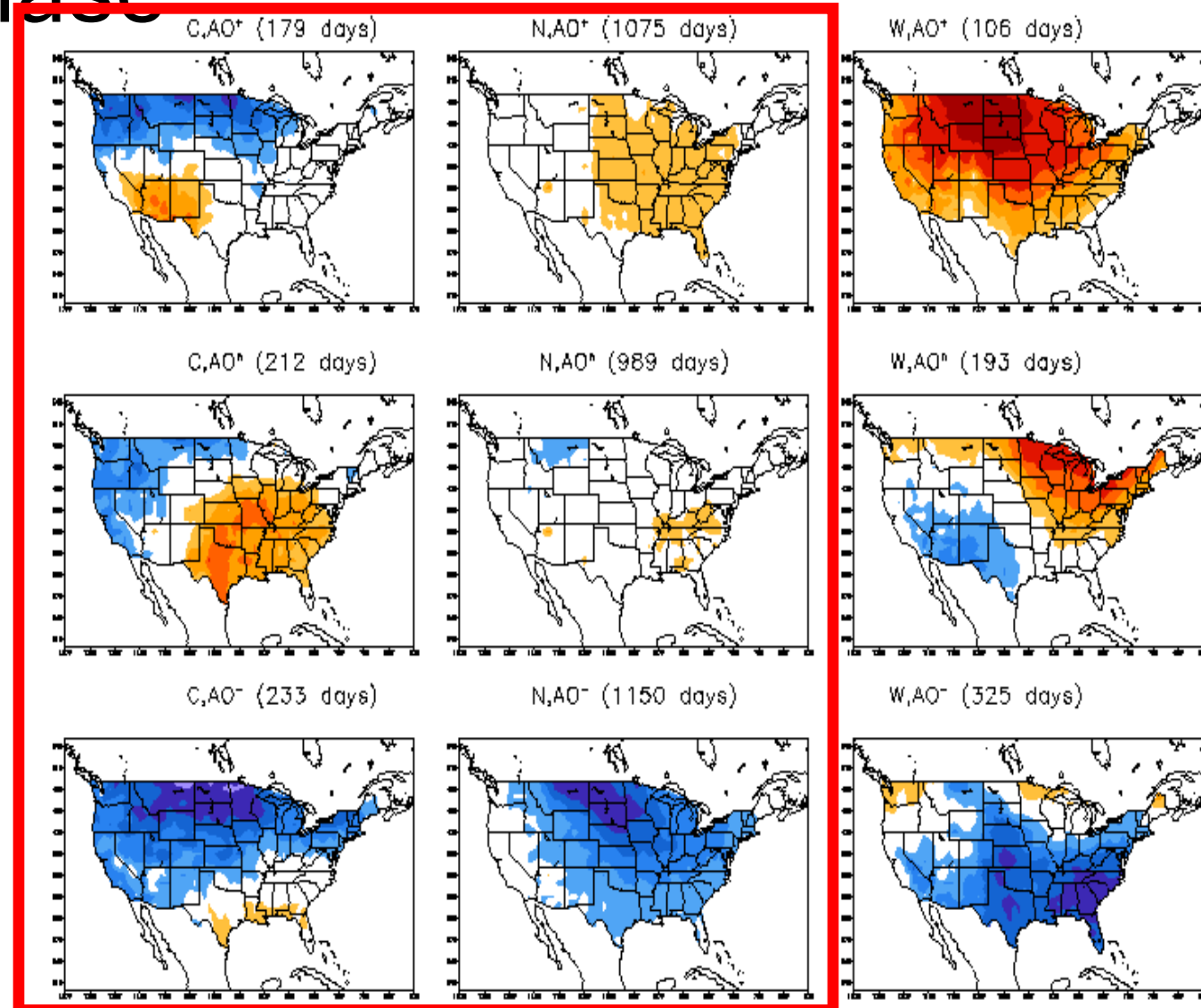
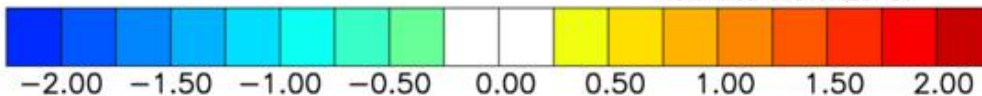
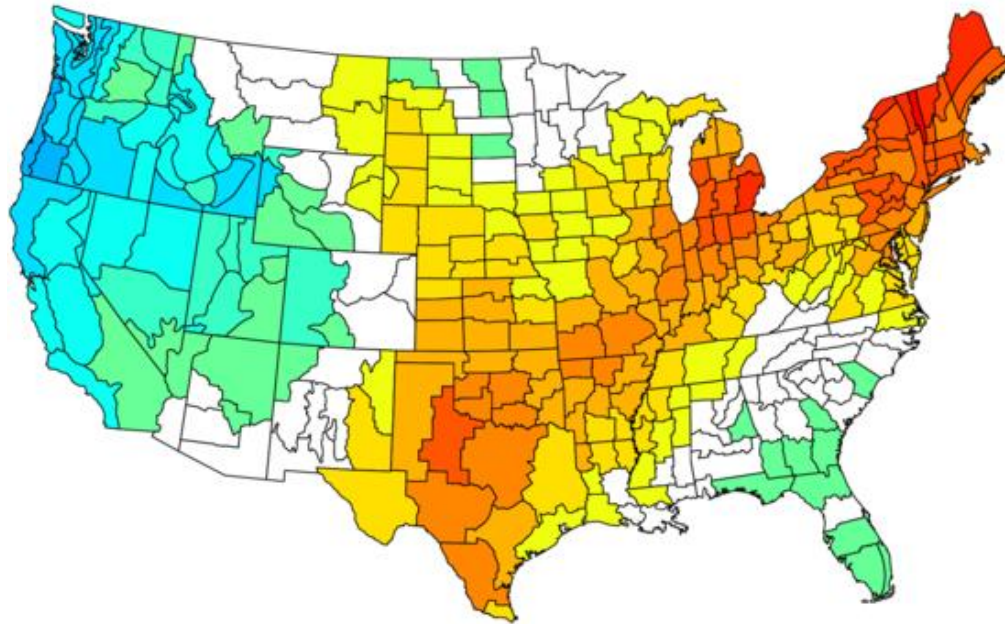
European



March – Temp Anomalies Based on Analog vs. Neutral ENSO/AO Phase

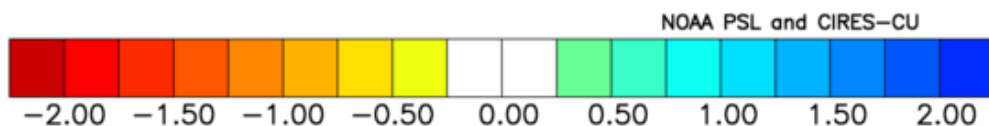
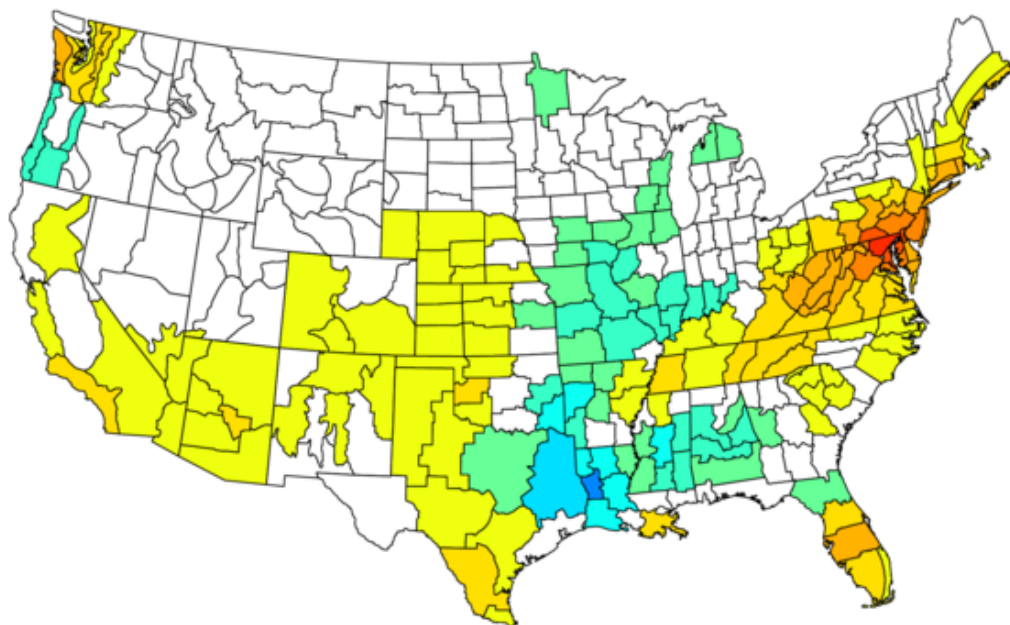
FMA Temperature Anomaly ($^{\circ}\text{C}$) by ENSO and AO Phase

NOAA/NCEI Climate Division Composite Temperature Anomalies (F)
Mar 2001, 2006, 2008, 2009, 2012, 2013, 2018, 2022, 2025
Versus 1991–2020 Longterm Average

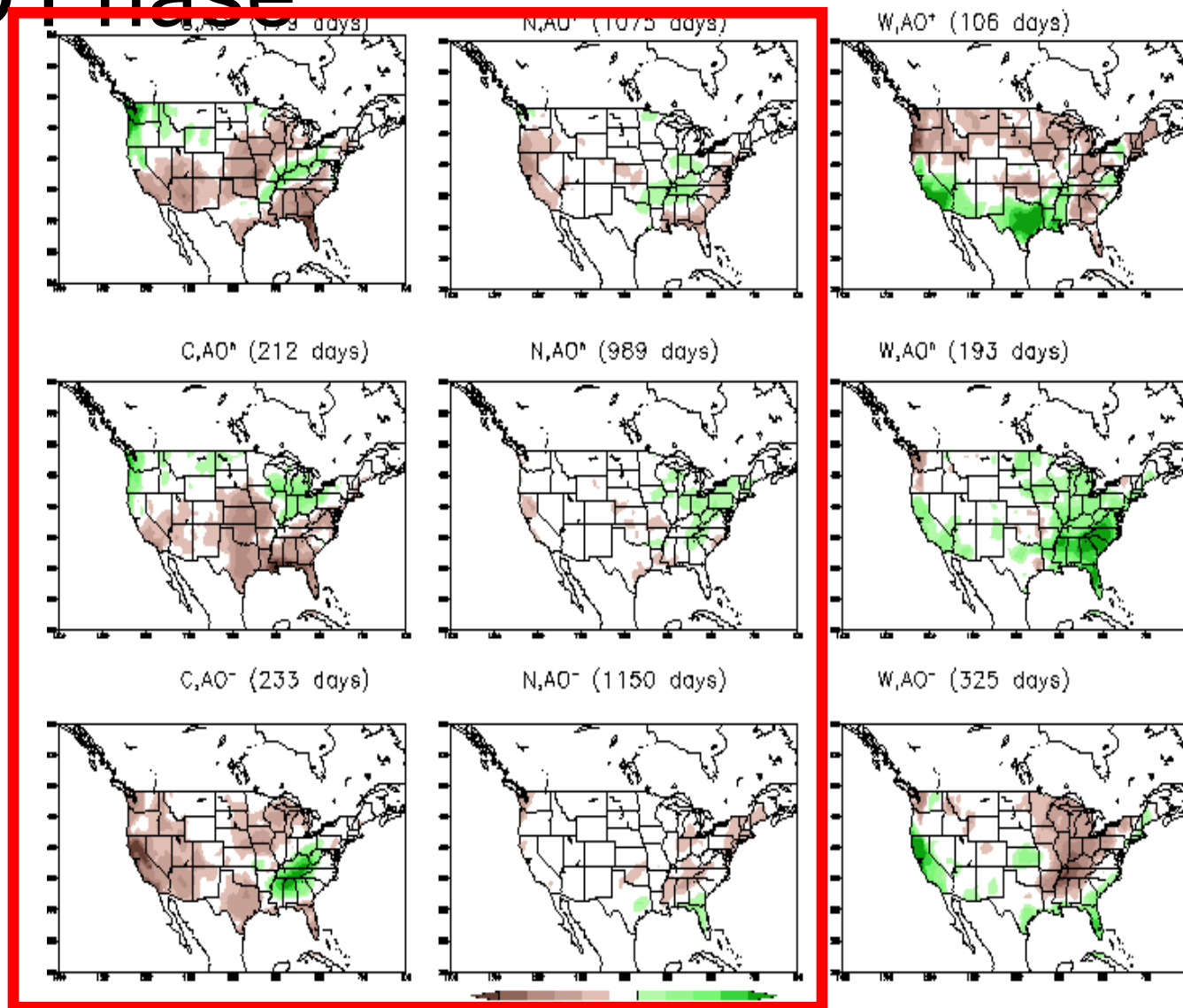


March – Precip Anomalies Based on Analog vs. Neutral ENSO/AO Phase

NOAA/NCEI Climate Division Composite Precipitation Anomalies (in)
Mar 2001, 2006, 2008, 2009, 2012, 2013, 2018, 2022, 2025
Versus 1991–2020 Longterm Average

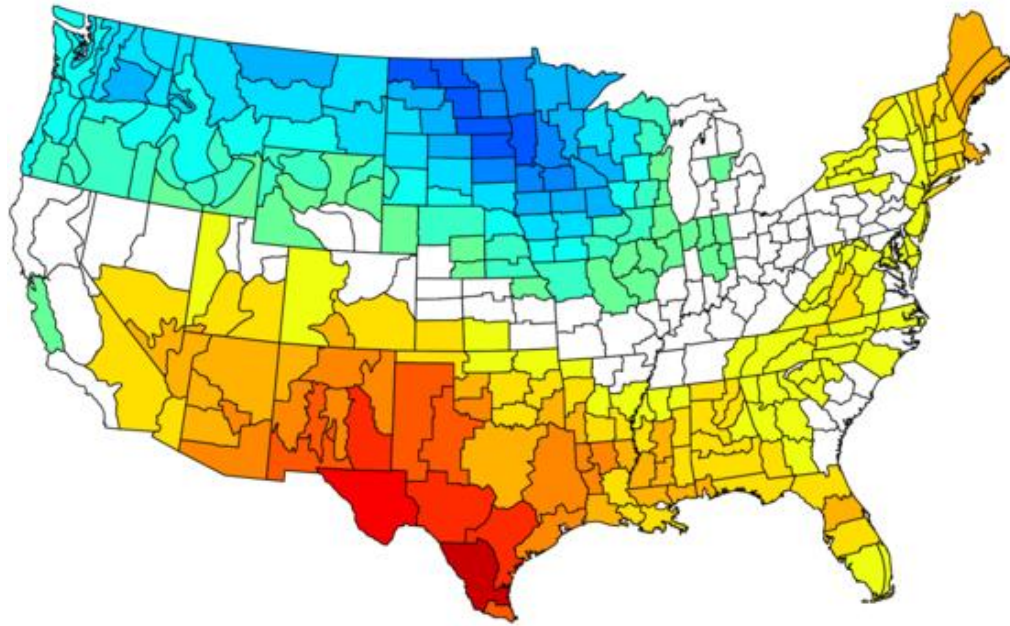


FMA Precipitation Anomaly (mm/day) by ENSO and AO Phase

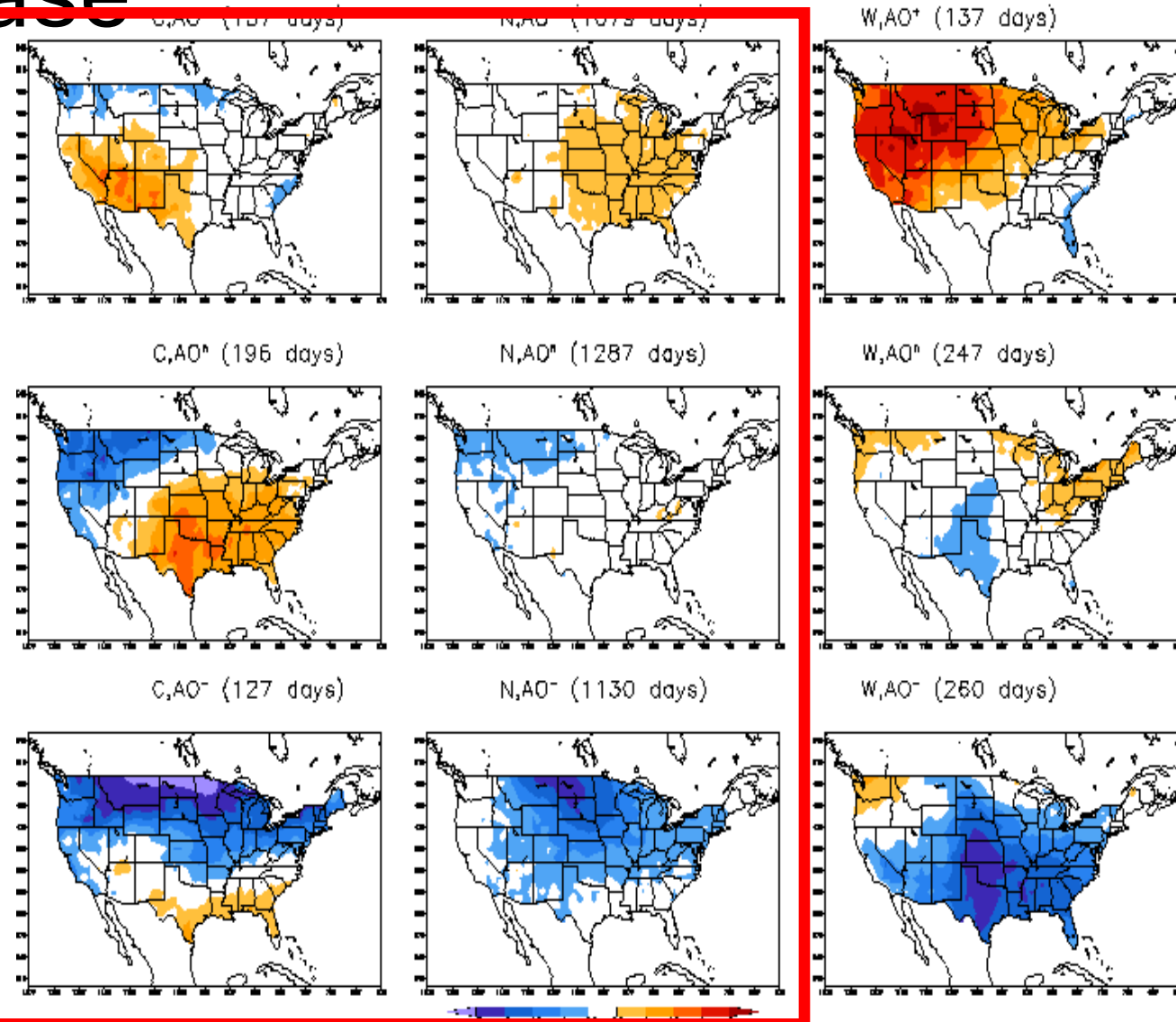


April – Temp Anomalies Based on Analog vs. Neutral ENSO/AO Phase

NOAA/NCEI Climate Division Composite Temperature Anomalies (F)
Apr 2001,2006,2008,2009,2012,2013,2018,2022,2025
Versus 1991–2020 Longterm Average

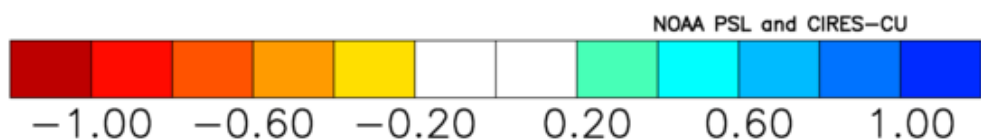
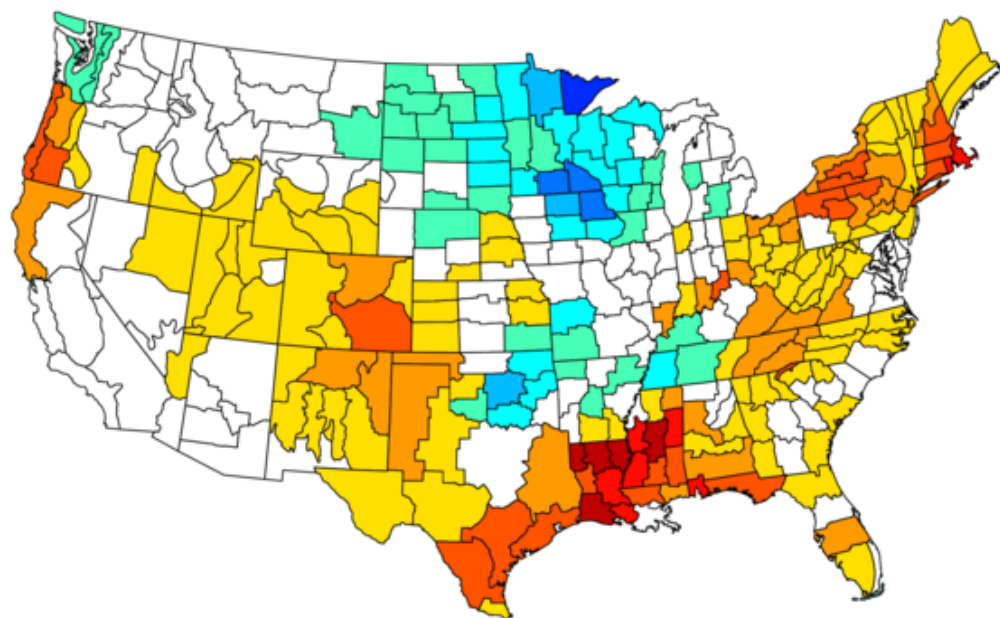


MAM Temperature Anomaly (°C) by ENSO and AO Phase

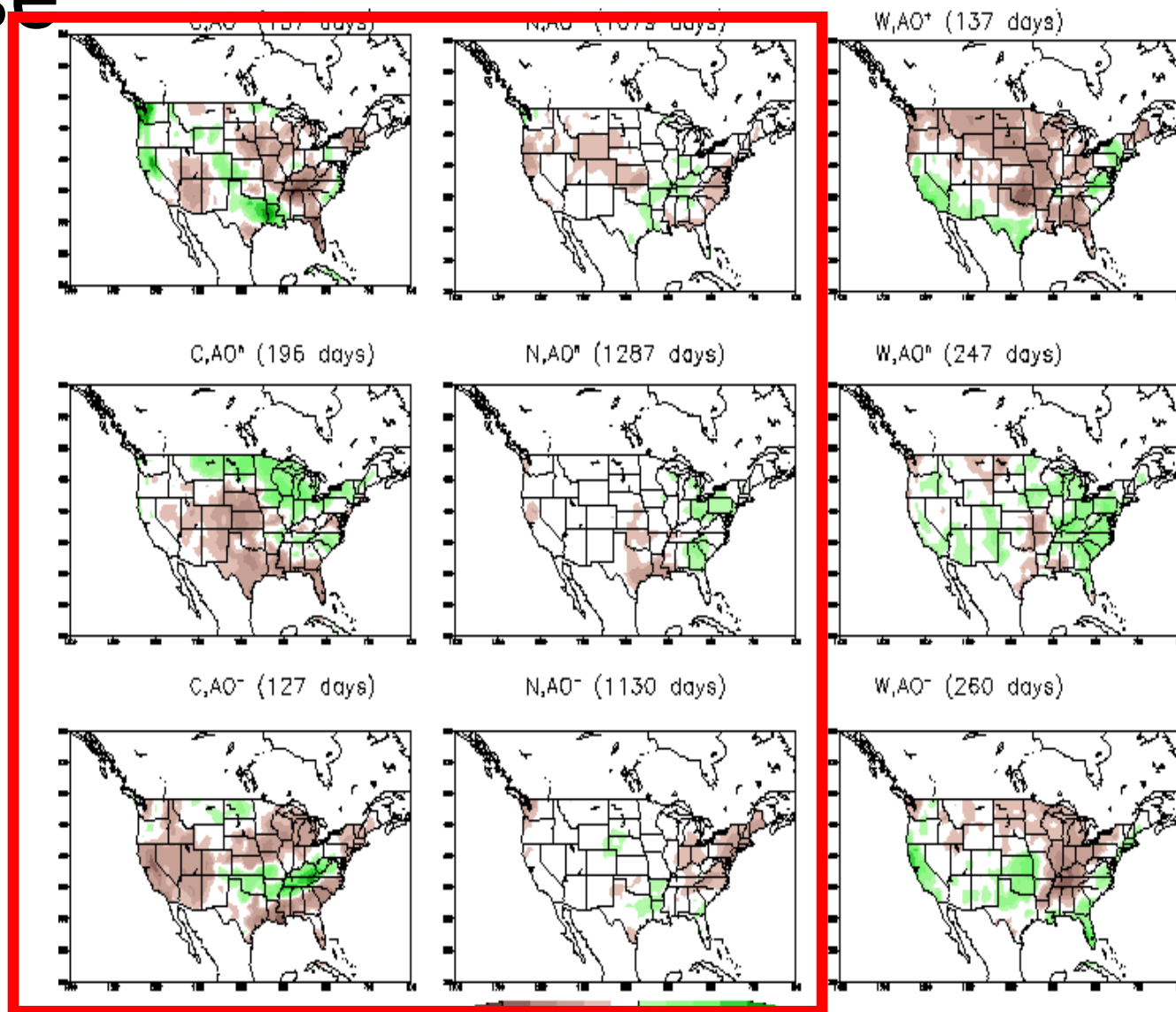


April – Precip Anomalies Based on Analog vs. Neutral ENSO/AO Phase

NOAA/NCEI Climate Division Composite Precipitation Anomalies (in)
Apr 2001, 2006, 2008, 2009, 2012, 2013, 2018, 2022, 2025
Versus 1991–2020 Longterm Average

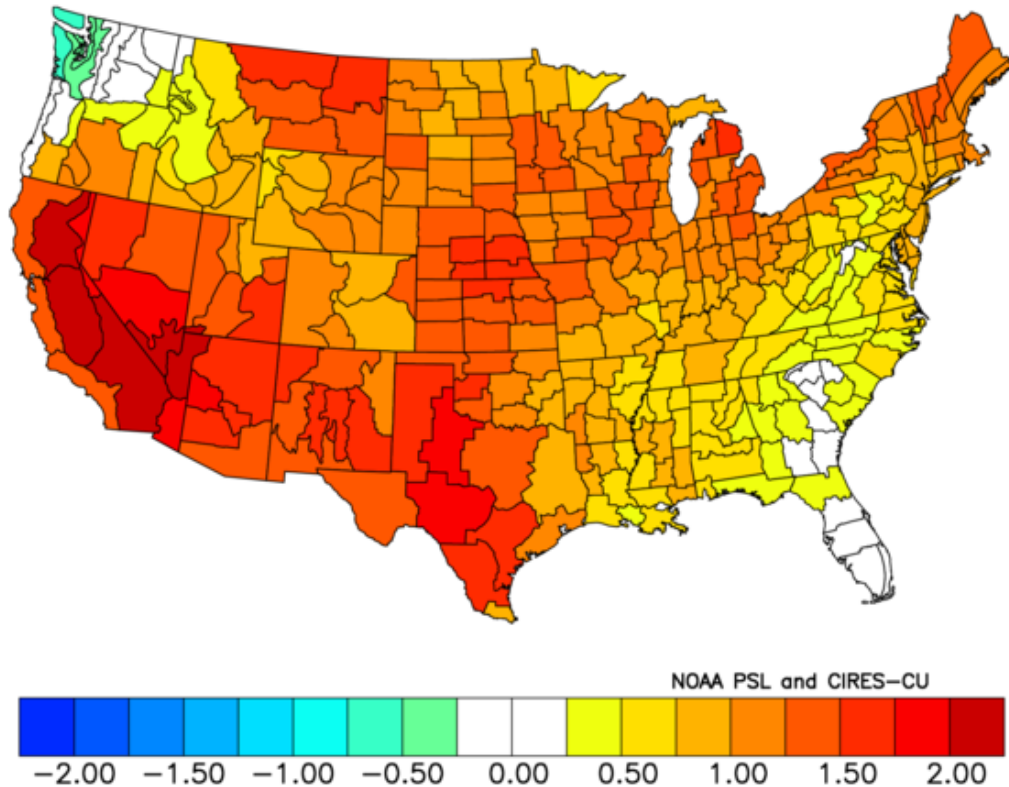


MAM Precipitation Anomaly (mm/day) by ENSO and AO Phase

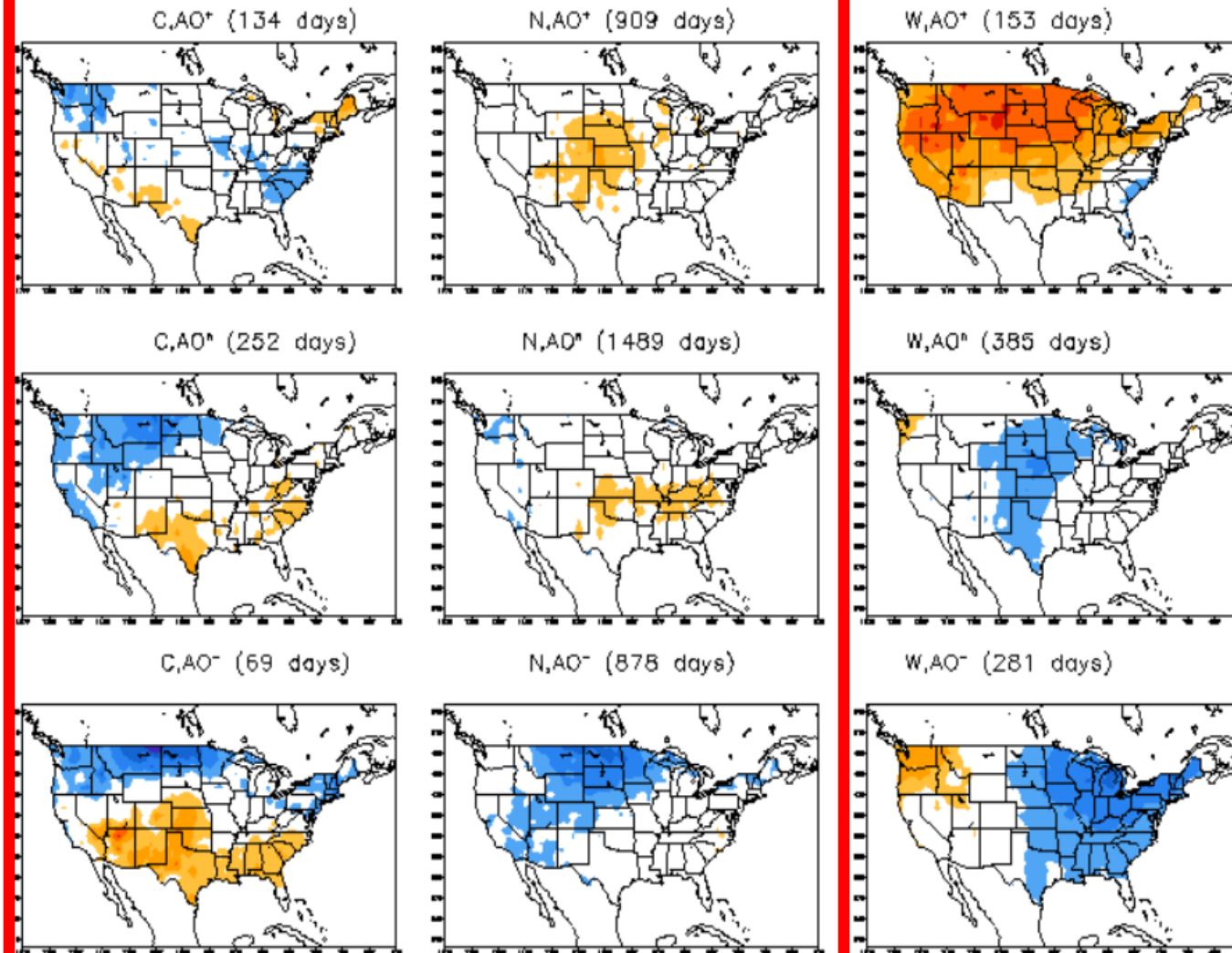


May – Temp Anomalies Based on Analog vs. Neutral ENSO/AO Phase

NOAA/NCEI Climate Division Composite Temperature Anomalies (F)
May 2001, 2006, 2008, 2009, 2012, 2013, 2018, 2022, 2025
Versus 1991–2020 Longterm Average

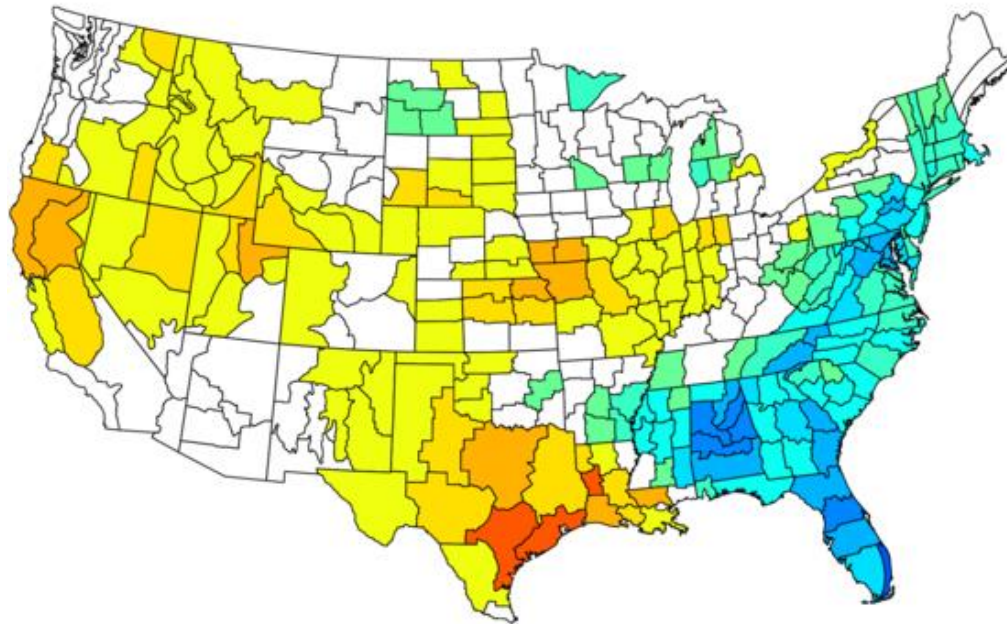


AMJ Temperature Anomaly (°C) by ENSO and AO Phase

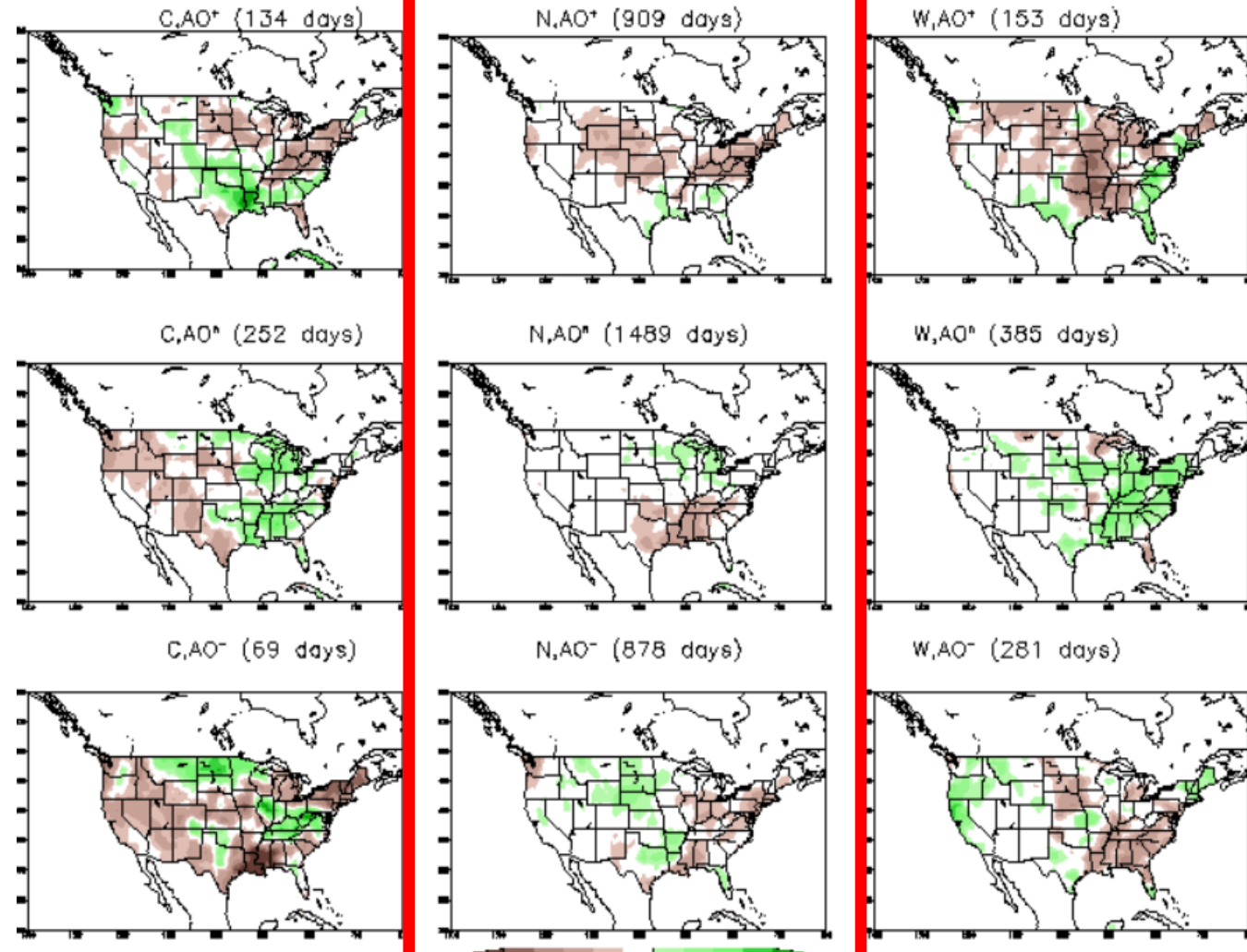


May – Precip Anomalies Based on Analog vs. Neutral ENSO/AO Phase

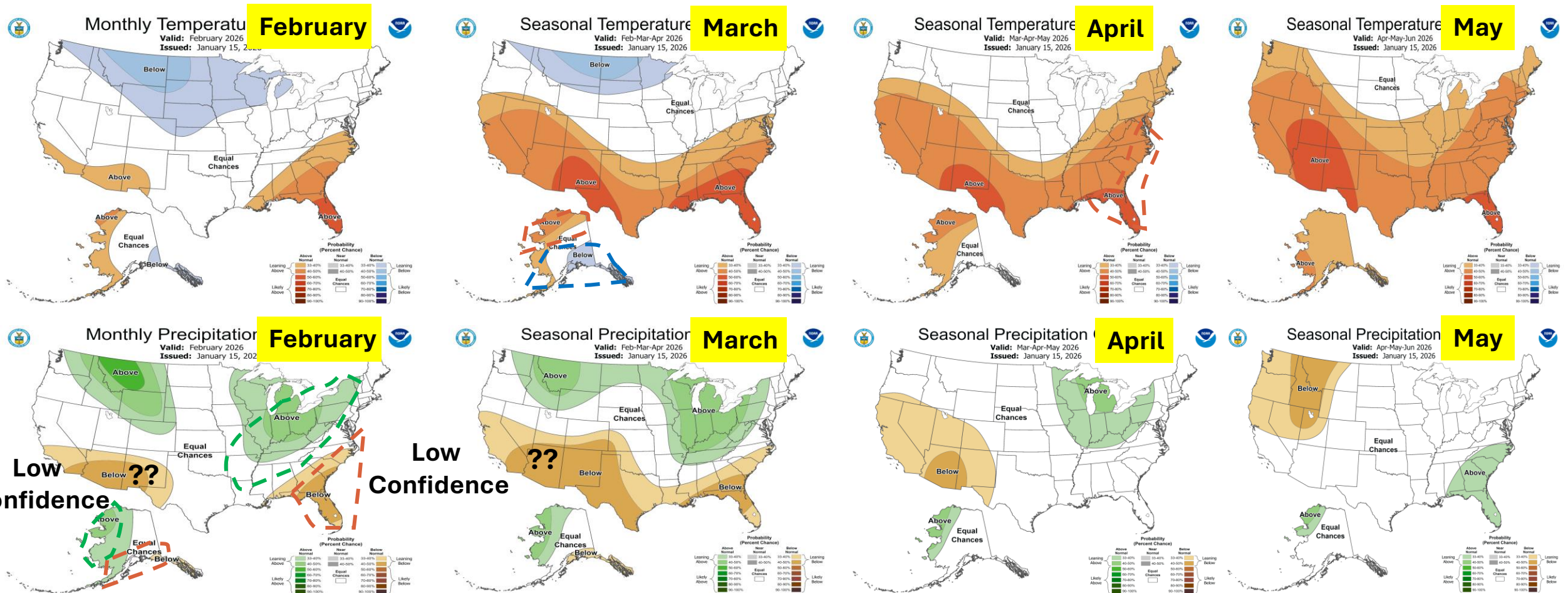
NOAA/NCEI Climate Division Composite Precipitation Anomalies (in)
May 2001, 2006, 2008, 2009, 2012, 2013, 2018, 2022, 2025
Versus 1991–2020 Longterm Average



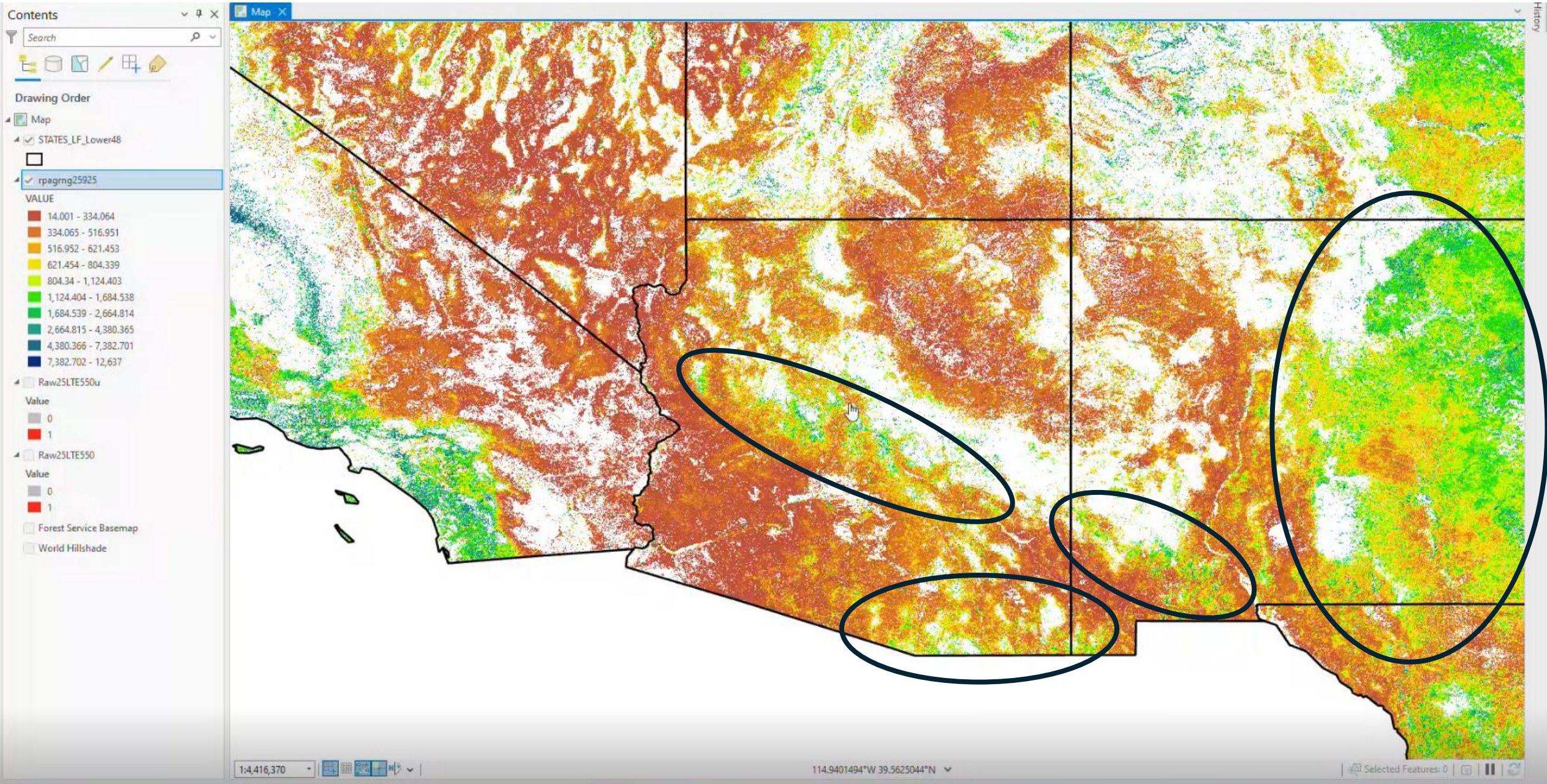
AMJ Precipitation Anomaly (mm/day) by ENSO and AO Phase



EXPERIMENTAL MONTHLY TEMP/PRECIP OUTLOOKS



Fuelcast – 2025 Derived Fine Fuel Loading (Matt Reeves)



Predictive Services 4-Month Fire Potential Outlook

