

# Southwest Area Annual Report: 2024 Fire Year

Updated: 6 March 2025



# Contents

Introduction .....	3
About the Annual Report .....	3
Considerations: .....	3
The Southwest Area and Local Dispatch Centers .....	4
2024 Southwest Area Fire Weather & Potential Summary .....	5
Notable Events and Trends: .....	5
Southwest Area Wildfire Activity .....	7
Synopsis .....	7
Significant Incidents Over 40,000 Acres .....	7
Large Wildfires and Acres .....	7
Large Wildfires by Local Dispatch Center and Agency .....	8
Overall Wildfire Activity Reported to SWCC .....	9
Wildfires by Local Dispatch Office .....	10
Wildfires by Agency of Ownership .....	11
Lightning Fires and Acres by Local Dispatch Area .....	12
Human Caused Fires and Acres by Local Dispatch Area .....	12
Undetermined Cause Fires and Acres by Local Dispatch Area .....	13
Prescribed Fire .....	14
Breakdown by Agency .....	14
Breakdown by Dispatch Zone .....	15
SWA Prescribed fire Map .....	16
Preparedness Levels .....	17
Historical Summary of SWA Preparedness Levels .....	18
SWA Request Workload .....	19
National Resource Requests Filled in SWA .....	20
Department of Defense and MAFFS Mobilizations .....	21
International Resource Mobilizations .....	21
IMT Summaries .....	22
NIMO Teams .....	22
The Southwest Area’s Complex Incident Management Teams .....	22
The Southwest Area’s Type 3 Incident Management Teams .....	23
Out of Area Teams .....	25
Buying Team Summary .....	26
Other Resource Summaries .....	27
Crew-type Resources .....	27
Fire Engines .....	28
Tactical Aircraft and Aircraft Support .....	29

## **Introduction**

The Southwest Coordination Center (SWCC) is the tier 2 dispatch center for the Southwest Geographic Area that provides coordination and predictive services as the interface between local dispatch centers in Arizona and New Mexico and the National Interagency Coordination Center (NICC). Lands covered by SWCC are composed of:

- Most lands in Arizona (aside from the BLM AZ Strip District in the Northwest corner),
- Most lands in New Mexico (aside from the small section of Ute Mountain Reservation near the northwest corner)
- A few federal entities in Oklahoma and Texas (Kiowa, Rita Blanca, and Black Kettle Grasslands administered by the Cibola NF, and the Guadalupe Mountains National Park).
- The portion of Navajo Nation that is within Utah

SWCC is based in Albuquerque, New Mexico and supports:

- Arizona Department of Forestry and Fire Management – DFFM
- New Mexico Energy, Minerals, and Natural Resources Department - EMNRD
- The Bureau of Indian Affairs - BIA
- The Bureau of Land Management - BLM
- The Bureau of Reclamation – BLR
- The Department of Defense - DoD
- The Department of Energy - DoE
- The National Park Service - NPS
- The United States Fish and Wildlife Service – USFWS
- The United States Forest Service – USFS

## **About the Annual Report**

The SWCC is responsible for summarizing all fire activity over the course of the preceding calendar year and compiling a report for both records keeping and future decision-making efforts. Inform data will be used unless otherwise noted, but sources include Irwin, IROC, SIT-209, and WildCAD.

Note that the information that is fed into these systems comes from a complex network of Incident Commanders, Duty Officers, Dispatch Centers, Firefighters, Aerial Observations, among other sources and thus complete accuracy is never guaranteed. This report matches what is officially recorded in the described systems as of its date of publication and is always subject to change. Please visit the [SWCC Website](#) or contact the SWCC direct for the latest figures or further information.

## **Considerations:**

“Natural” and “Lightning” cause are used interchangeably, as are “Undetermined” and “Unknown” cause.

“State Forestry” or “SF” will indicate either or both of Arizona and New Mexico’s state forestry agencies, depending on context, as well as private lands that are protected by the state agencies and local sub-state level entities (counties, municipalities, etc).

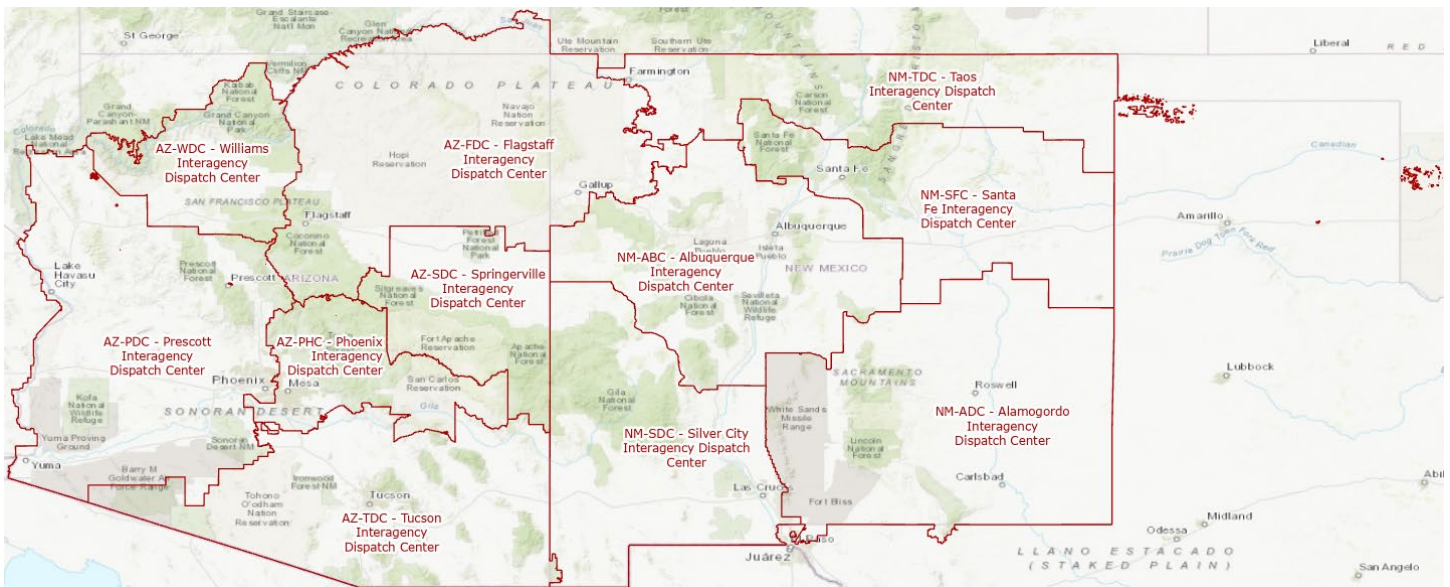
## The Southwest Area and Local Dispatch Centers

The Southwest Area has 12 Local or Tier 3 dispatch centers as well as two Tier 4 dispatch centers.

The SWCC's boundaries include the combination of all type 3 centers within the Geographic Area.

The Tier 3 centers are depicted in the below map, except for Arizona State Dispatch who cover all state and lower level lands in Arizona, overlapping with the Federal Interagency Dispatch Centers in Arizona. The Grasslands in Oklahoma and Texas are dispatched by Albuquerque Interagency Dispatch Center, being administered by the Cibola National Forest. The Guadalupe Mountains National Park in Texas is covered by Alamogordo Interagency Dispatch Center, which covers neighboring lands in New Mexico.

The Tier 4 centers, Navajo and Hopi, are likewise not depicted, they fall under Flagstaff Dispatch. Hopi dispatches IA, while Navajo dispatches IA as well as logistics. Their boundaries are coterminous with the boundaries of the Navajo Nation and Hopi Reservation respectively. The portion of Navajo Nation in Utah is still dispatched by Navajo Dispatch.



The Unit IDs used though the rest of this document for the local dispatch centers are:

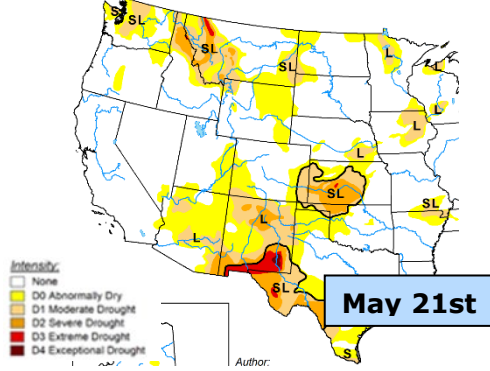
- Arizona State Dispatch - AZ-ADC
- Flagstaff Interagency Dispatch – AZ-FDC
- Phoenix Interagency Dispatch – AZ-PHC
- Prescott Interagency Dispatch – AZ-PDC
- Springerville Interagency Dispatch – AZ-SDC
- Tucson Interagency Dispatch – AZ-TDC
- Willaims Interagency Dispatch – AZ-WDC
- Alamogordo Interagency Dispatch – NM-ADC
- Albuquerque Interagency Dispatch – NM-ABC
- Santa Fe Interagency Dispatch – NM-SFC
- Silver City Interagency Dispatch – NM-SDC
- Taos Interagency Dispatch – NM-TDC

# 2024 Southwest Area Fire Weather & Potential Summary

**Minimal significant drought and a cool/moist spring west to an early Monsoon followed by drier and hot weather**

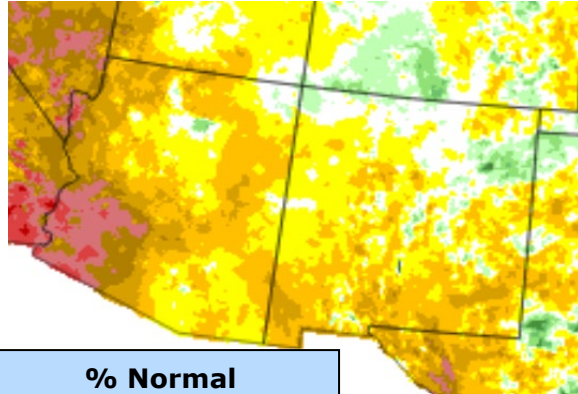
Drought

**U.S. Drought Monitor**



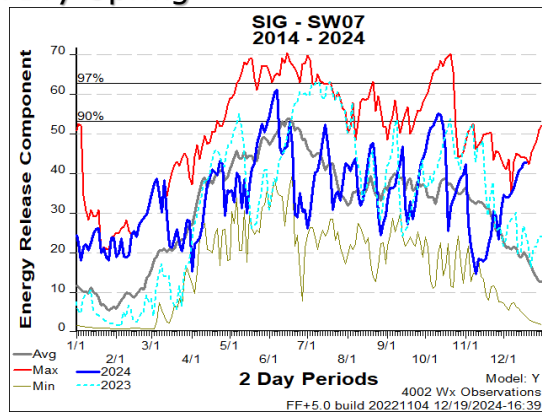
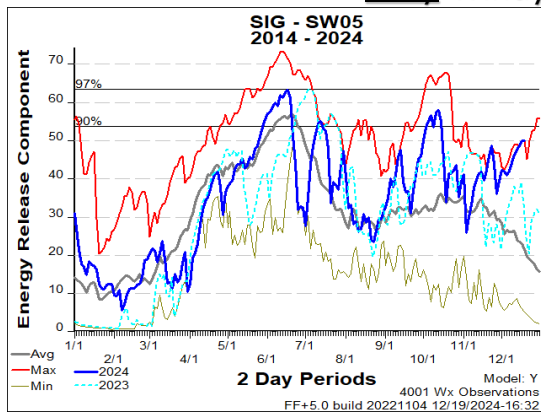
May 21st

Weak Monsoon, after early burst



% Normal  
JUL-SEP Rainfall

Very Windy & Dry Spring



**Exceptionally cool and moist spring focused west of the divide with drier conditions further east. ERC values stayed below/near normal until late May, then peaked in early June across the east and mid-June across the west before dropping to at/near record minimums by late June amidst an early monsoon. Thereafter, sharply oscillating ERC values from JUL-OCT via weak, inconsistent moisture pulses coincident with well above normal temperatures.**

## Notable Events and Trends:

- By around Memorial Day, with the exception of far southern New Mexico, much of the region did not have significant drought as the moderate El Niño from the winter of 2023 through spring of 2024 came to an end
- A wet to very wet March brought snow water equivalent values up dramatically nearly areawide by early April. A cooler than normal April across Arizona did keep the snowpack intact west of the divide compared to further east where high temperatures were above normal across northern/eastern New Mexico
- Close to normal temperatures occurred along/west of the divide in May although precipitation was meager

- Fire danger indices rose steadily from early April into mid-June for most areas west of the divide while oscillating up and down more routinely further east. Drier conditions gripped much of the region during May after being focused more across northern and eastern New Mexico during April.
- High temperatures during June were above normal areawide and the summer monsoon began early with well above normal precipitation nearly area-wide dropping fire danger indices quickly during mid-late June.
- Despite the early start, the monsoonal flow weakened by early July with fire danger indices going up and down every few weeks through mid-SEP as the monsoon struggled to remain consistent. Significant large fire activity remained a concern throughout the remainder of the summer through mid-fall as high temperature records were routinely being broken through early-mid October across much of the region
- July through September precipitation across the region was well below normal

RAWS Deployed at Camp Geronimo with the West Fire in the background – photo by E. Johnson



# Southwest Area Wildfire Activity

## Synopsis

Within the Southwest Area (SWA), there were 3,038 fires reported in 2024, up 5 from 3,033 reported in the year 2023. Acres consumed by wildfires went down from 410,903 in 2023 to 408,272 in 2024, representing the least acres burned in the area since 2015 which had 202,485.

In 2024, the reported acres for wildland fires were lower than the previous 10-year average at 70% of the average, meanwhile the total number of wildfires was up 8% of the ten-year mean. Total acreage places 2024 above only two of the past ten years, while total fires place it near the center of the pack, between 6<sup>th</sup> and 7<sup>th</sup> -most.

A total of 45 structures were damaged, broken down into the following: 37 Single Residences, 1 Multiple Residences, 1 Mixed Commercial-Residential, 1 Non-residential Commercial Property, and 5 other Minor Structures; Meanwhile 1030 structures were destroyed, divided as: 1003 Single Residences, 7 Multiple Residences, 7 Mixed Commercial-Residential, 9 Non-residential Commercial Property, and 4 other Minor Structures.

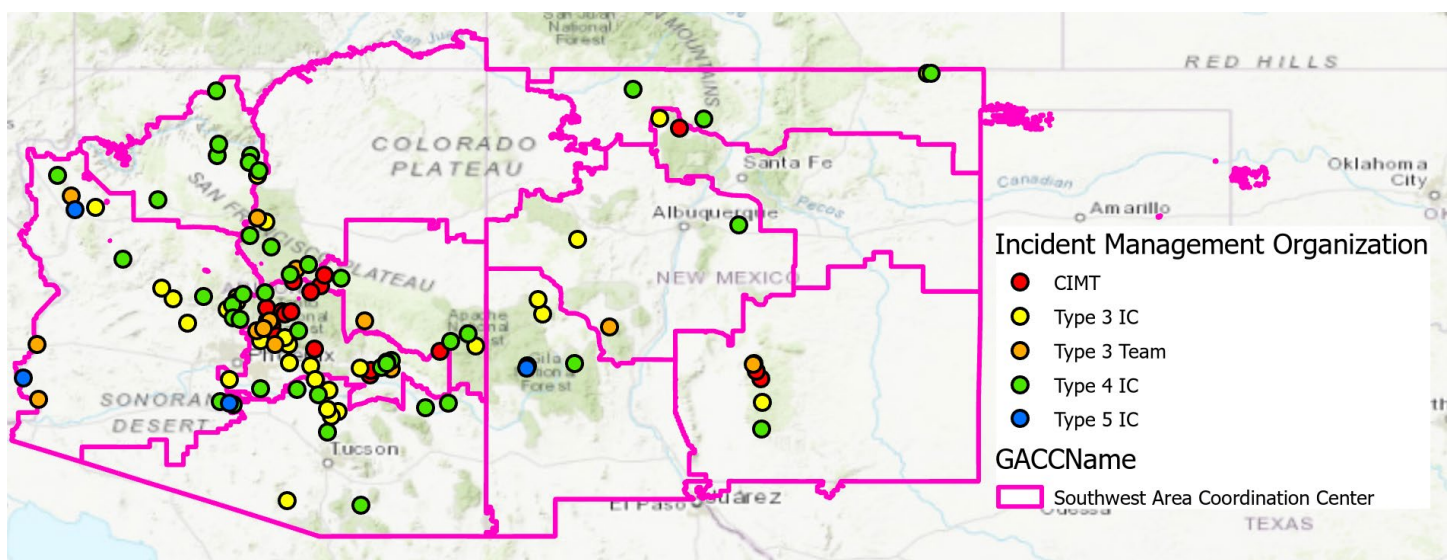
## Significant Incidents Over 40,000 Acres

The National Interagency Coordination Center tracks fires over the 40,000 acres threshold. There were no fires over 40,000 acres in the Southwest in 2024.

## Large Wildfires and Acres

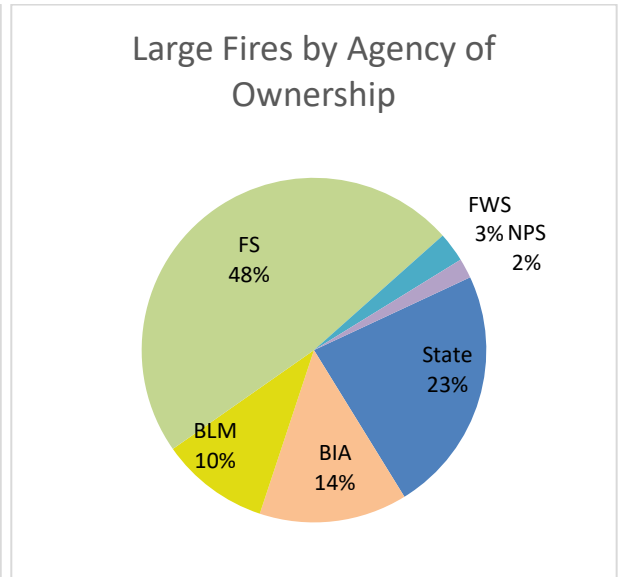
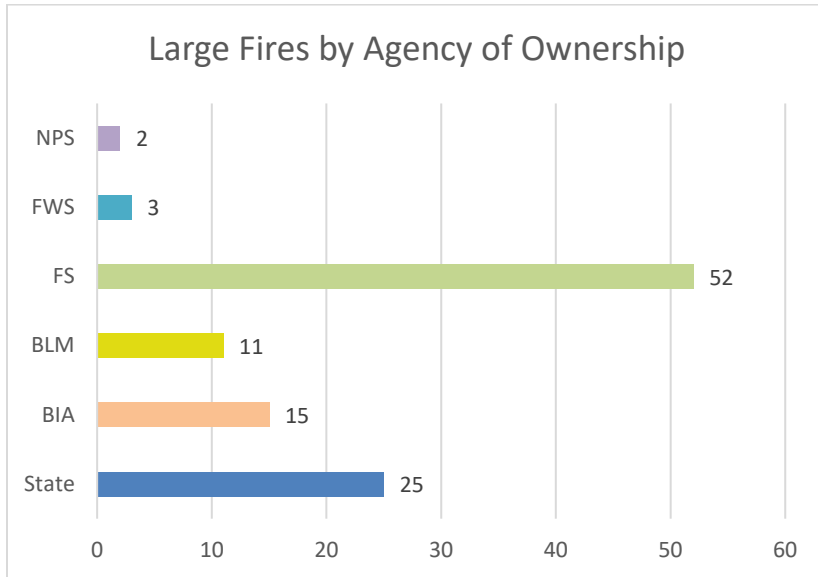
Large fires are defined in the National and Southwest Interagency Standards for Resource Mobilization as fires that burn 100 acres or more in timber fuel models, or 300 acres in grass and brush fuel models. These fires are required to be recorded in the SIT/209 application as significant wildfires.

There were 108 large wildfires and complexes reported in 2024 within the SWA, for 360,425 Acres. Those Large fires comprise 3.6% of the Area's 3038 wildfires, but they consumed 88.2% of the total acres burned in the area.

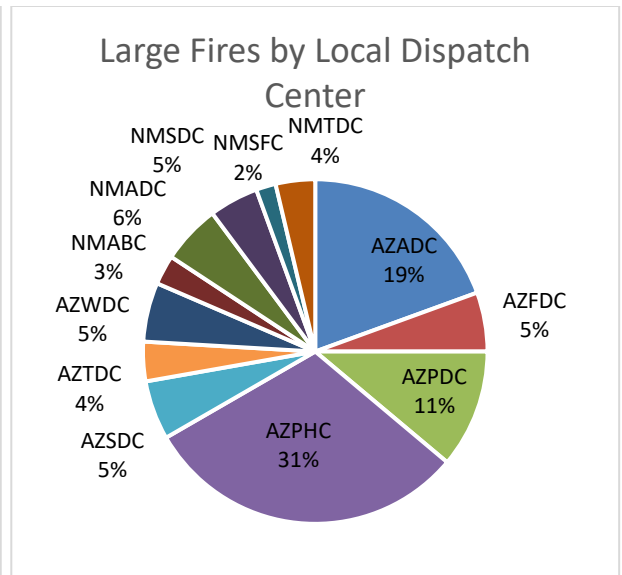
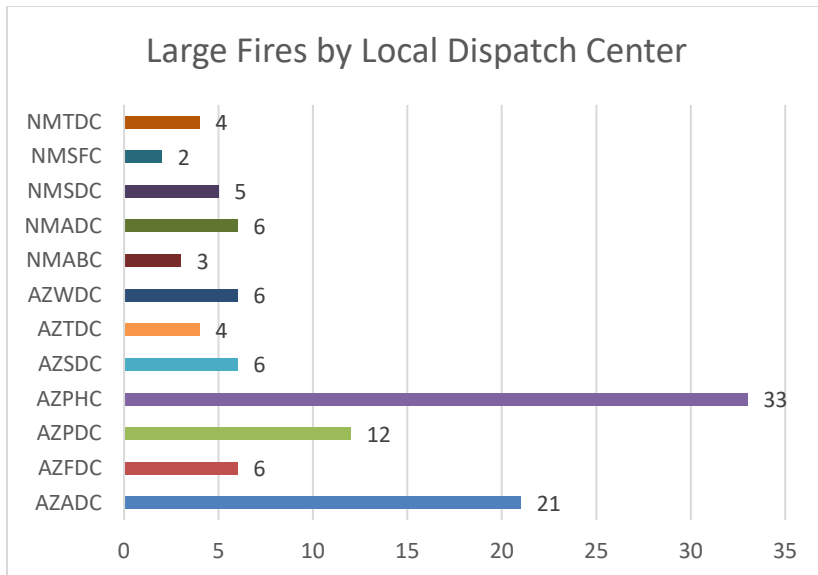


## Large Wildfires by Local Dispatch Center and Agency

The Forest Service had the largest number of fires, followed by State and Private; whereas the National Park Service and Fish and Wildlife Service had the least number of large fires.



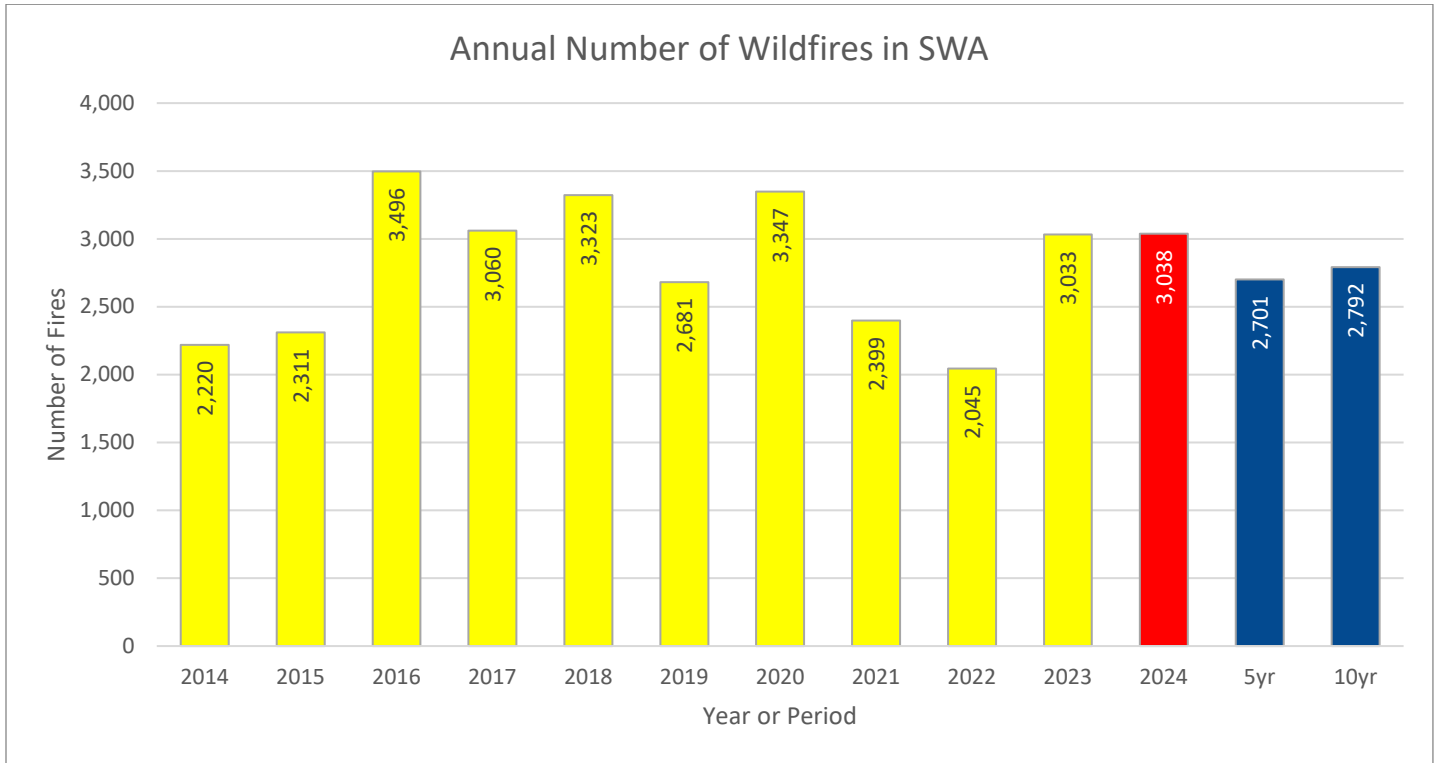
Phoenix and Arizona State Dispatch Centers had the greater count of large fires, with Albuquerque and Santa Fe Dispatch Centers carrying the fewest.



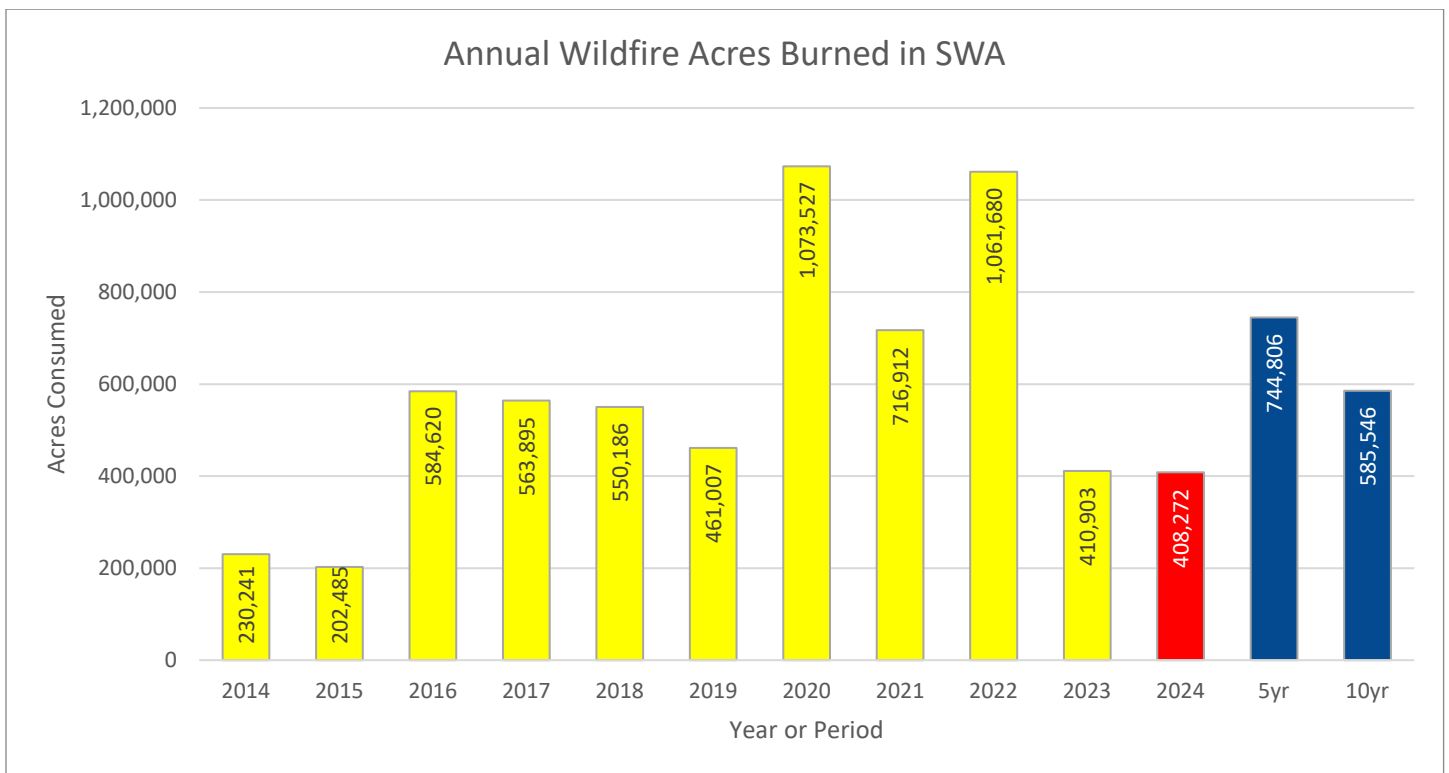


## Overall Wildfire Activity Reported to SWCC

Total wildfires in the Area came in just higher than for 2023, increasing by 5 total (or 0.16%), giving 2024 the 6<sup>th</sup> highest number of reported wildfires in the last ten years, and higher than the five-year and ten-year averages.

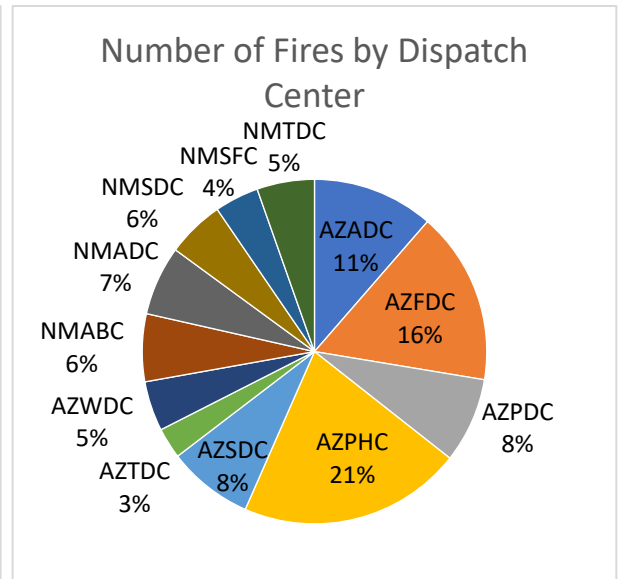
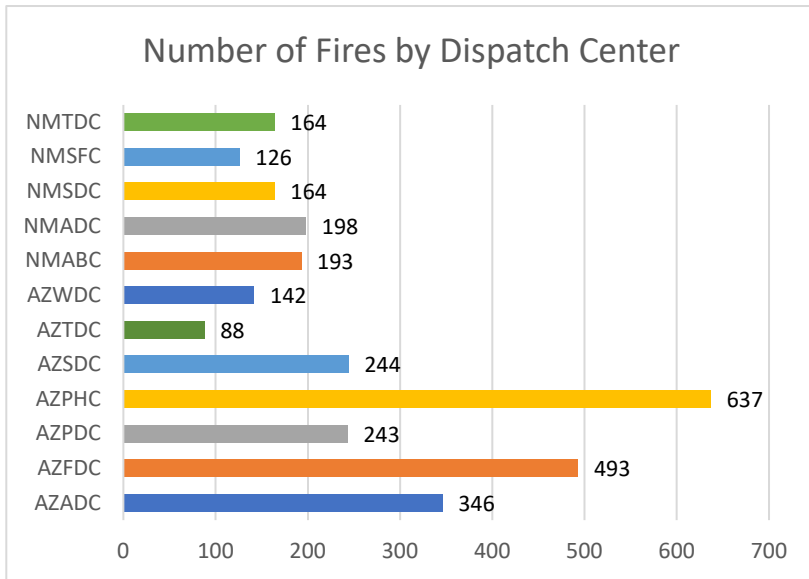


Commensurate with the very similar number of fires to 2023, 2024 also had a similar acreage, dropping 2,631 acres (or 0.64%) from 2023 numbers. These 408,272 acres make the total acreage burned the 3<sup>rd</sup> smallest in the ten-year window.

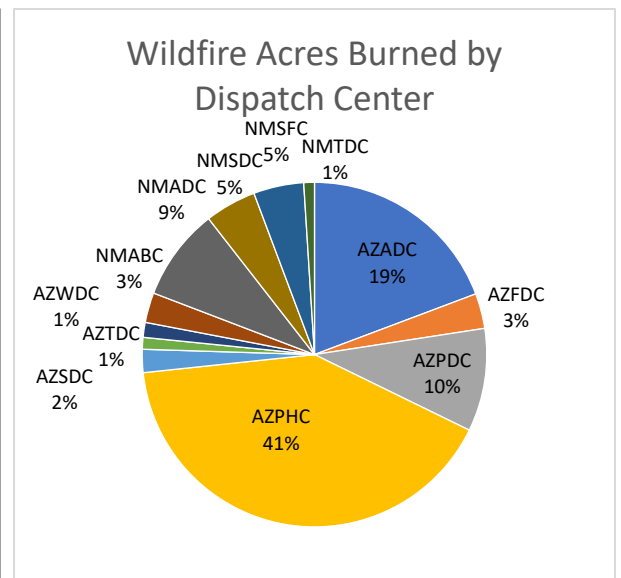
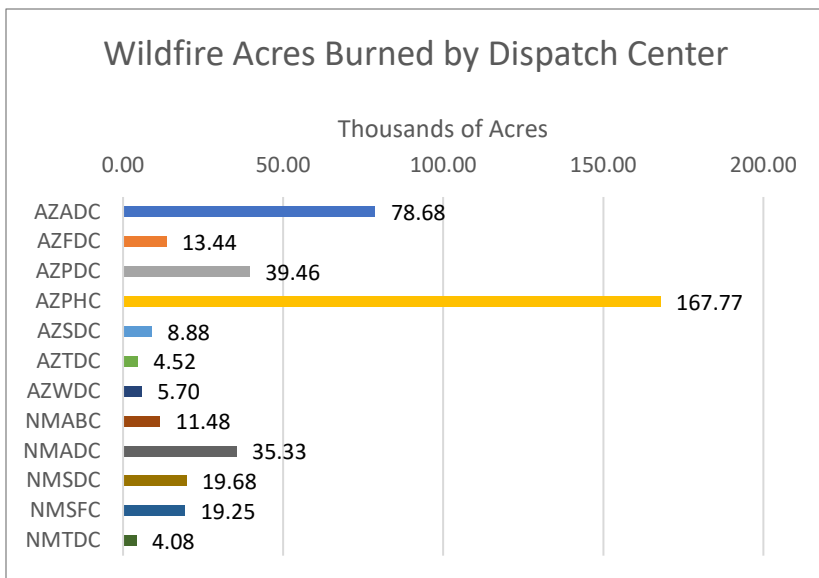


## Wildfires by Local Dispatch Office

In 2024, the SWA Dispatch centers had a low variation in total fire counts, ranging from 88 in Tucson to 637 for Phoenix; with a standard deviation of 5%. The outliers were both on the higher side, Phoenix and Arizona, having over 1/3 of the fires between them.

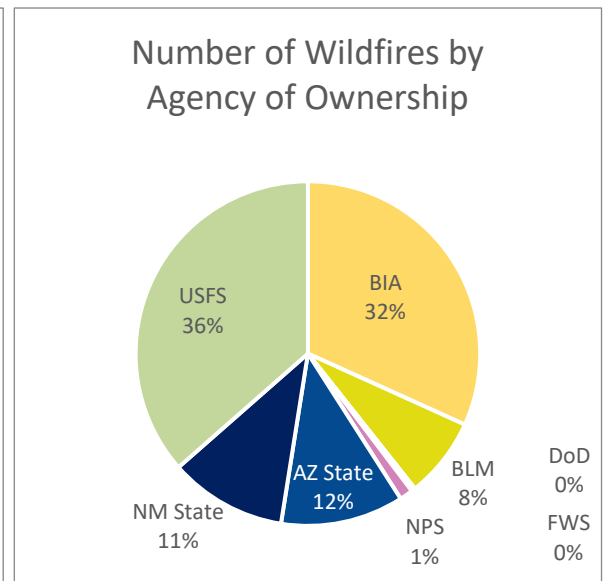
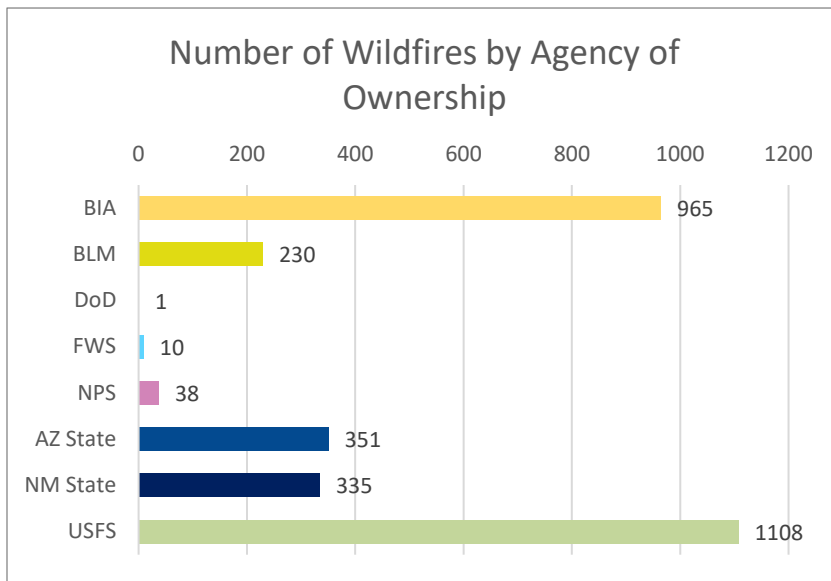


The acres burned display a wider variance, with Phoenix and Arizona State combined being over half of all acres. The standard deviation for acres was at 11%, a figure that reflects 8 of the 12 centers being below the Area average and leaving the only outlier as Phoenix with 41% of the total acres.

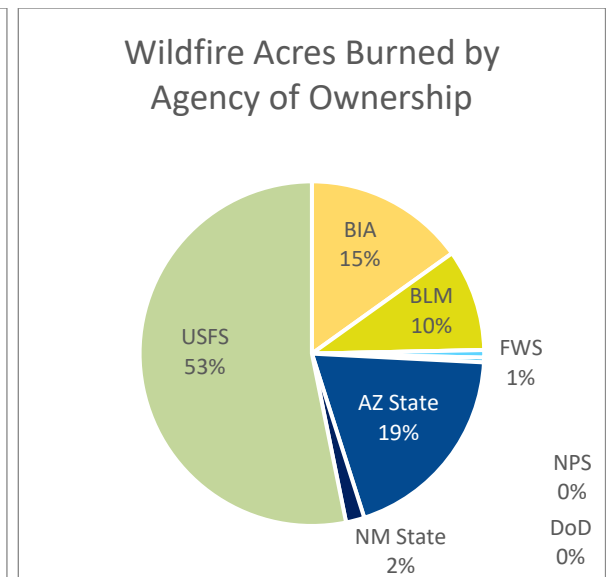
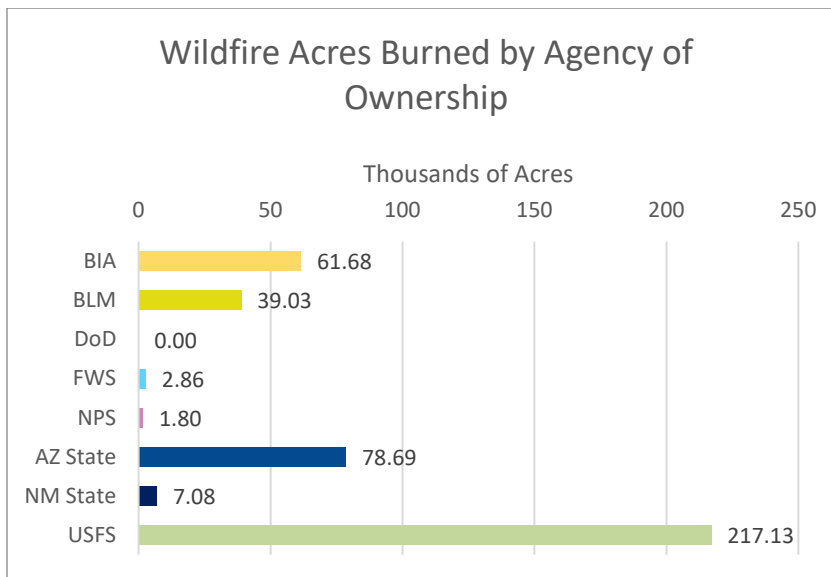


## Wildfires by Agency of Ownership

The Forest Service and Bureau of Indian Affairs had the majority of fires in 2024, amounting to 68% of the total starts. As with most years there were no fires reported by the Department of Energy, however the Department of Defense had 1 this year.



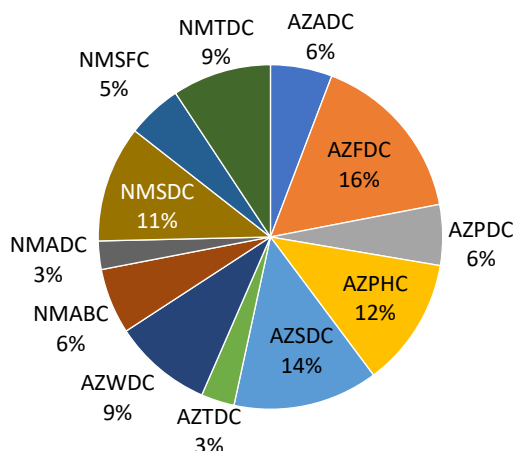
Despite more fires on Bureau of Indian Affairs land, AZ state had more acres consumed. The Forest Service carried more than half of all acres alone.



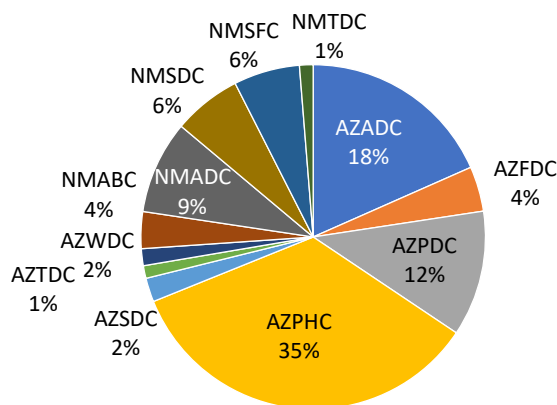
## Lightning Fires and Acres by Local Dispatch Area

Center	AZADC	AZFDC	AZPDC	AZPHC	AZSDC	AZTDC	AZWDC	NMABC	NMADC	NMSDC	NMSFC	NMTDC	Sum
<b>Fires</b>	63	176	62	132	148	34	101	67	29	119	56	101	1,088
<b>Acres</b>	54,351	12,483	34,878	102,023	6,644	3,513	4,695	10,221	25,841	18,962	18,351	3,768	295,729

Lightning Caused Fires by Local Dispatch Area



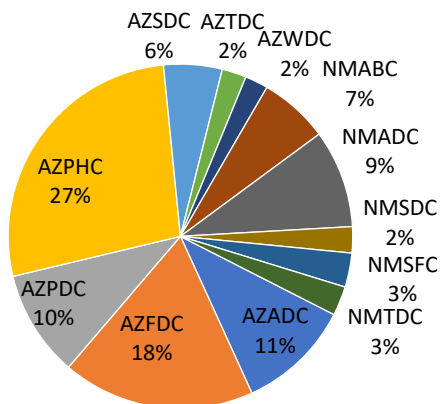
Lightning Caused Acres Burned By Local Dispatch Area



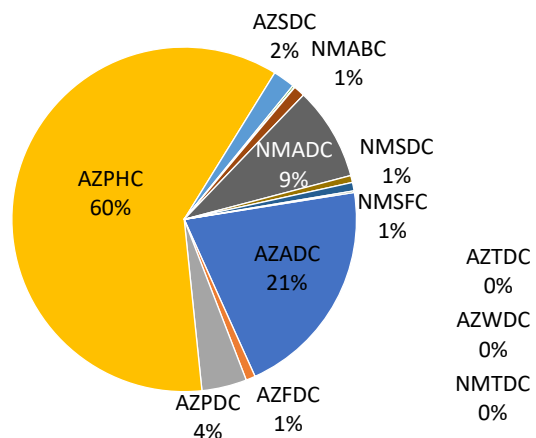
## Human Caused Fires and Acres by Local Dispatch Area

Center	AZADC	AZFDC	AZPDC	AZPHC	AZSDC	AZTDC	AZWDC	NMABC	NMADC	NMSDC	NMSFC	NMTDC	Sum
<b>Fires</b>	187	316	175	475	96	40	38	114	161	43	56	48	1,749
<b>Acres</b>	22,553	957	4,585	65,704	2,231	221	35	1,162	9,490	712	860	160	108,670

Human Caused Fires by Local Dispatch Area



Human Caused Acres Burned by Local Dispatch Area



# Undetermined Cause Fires and Acres by Local Dispatch Area

Center	AZADC	AZFDC	AZPDC	AZPHC	AZSDC	AZTDC	AZWDC	NMABC	NMADC	NMSDC	NMSFC	NMTDC	Sum
<b>Fires</b>	96	1	6	30	0	14	3	12	8	2	14	15	201
<b>Acres</b>	1,780	0	1	39	0	786	972	102	2	4	41	148	3,875

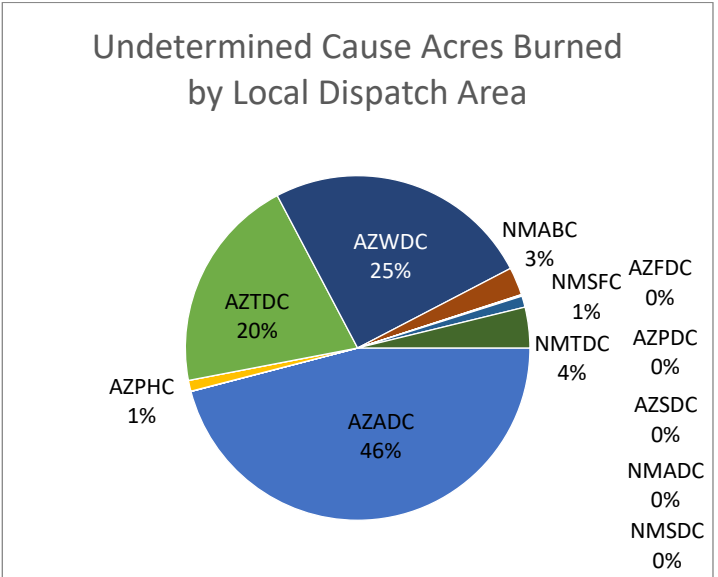
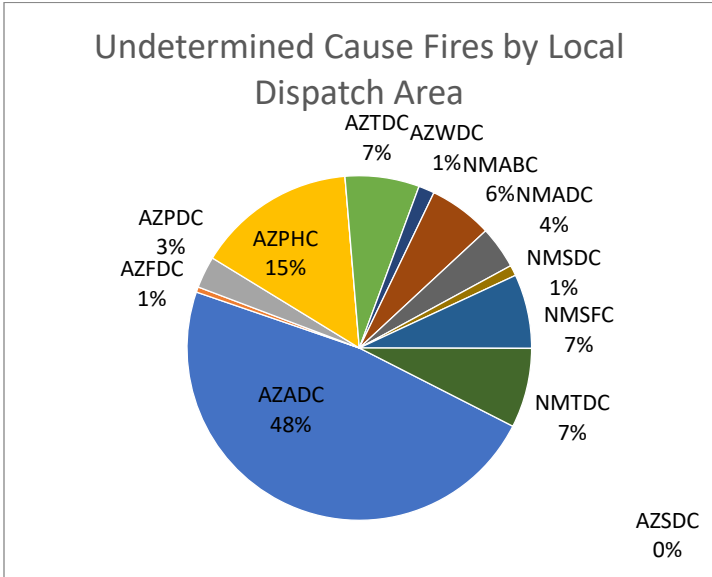


Photo of the Hillside Fire – photo by J. VanDerHoeven

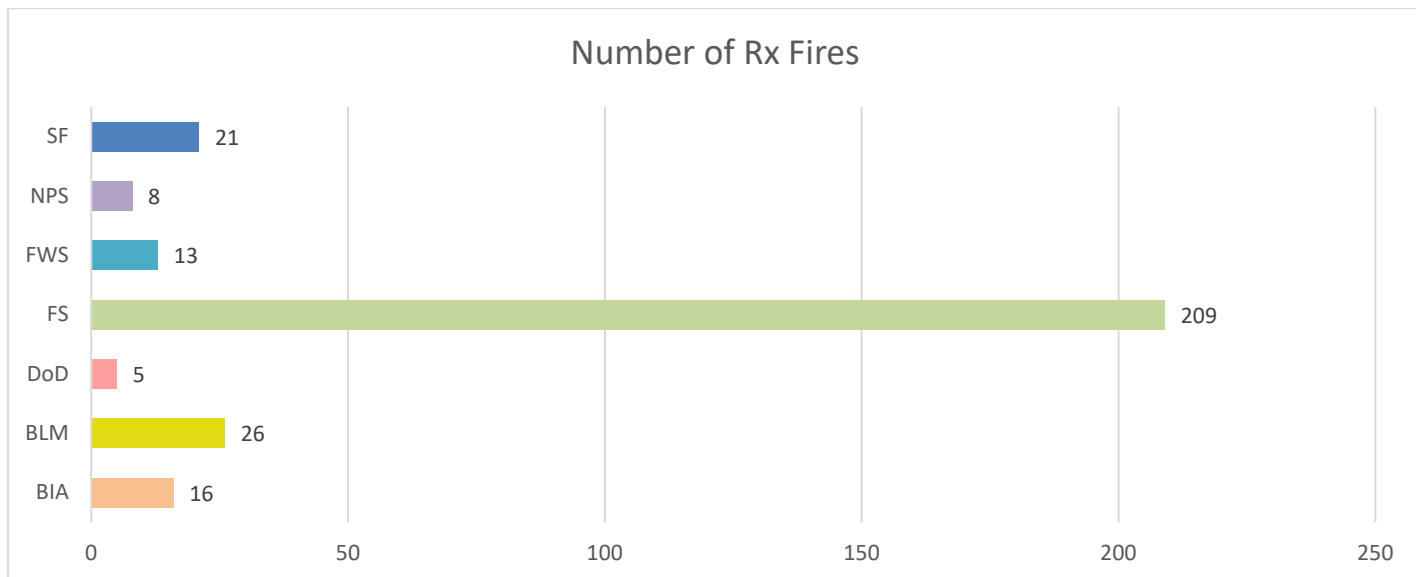
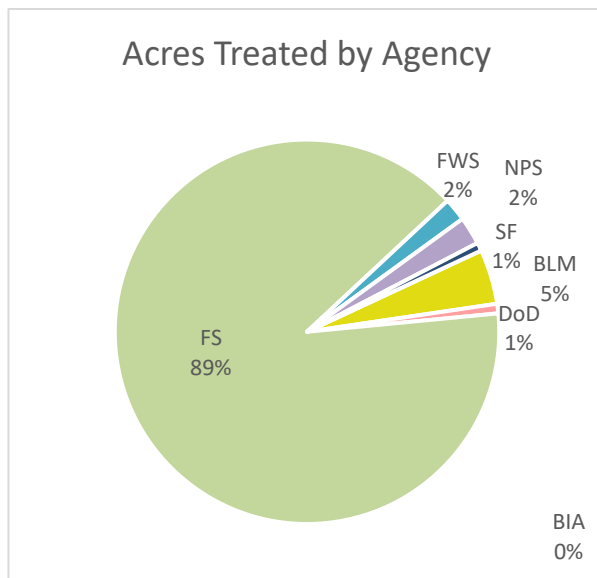


## Prescribed Fire

Across the SWA there were 298 prescribed fires (Rx fires) reported and tracked within the Interagency Dispatch System. The values are taken from Inform, and do not account for private burns or those not reported to a local dispatch center for tracking purposes. Note that these are not counted the same as ignitions or days of burning activity, but by project.

### Breakdown by Agency

Agency	Number of Fires	Acres Treated
<b>BIA</b>	16	2.8
<b>BLM</b>	26	3149.1
<b>DoD</b>	5	550.0
<b>FS</b>	209	61192.6
<b>FWS</b>	13	1332.2
<b>NPS</b>	8	1608.1
<b>SF</b>	21	475.0
<b>Total</b>	298	68309.8

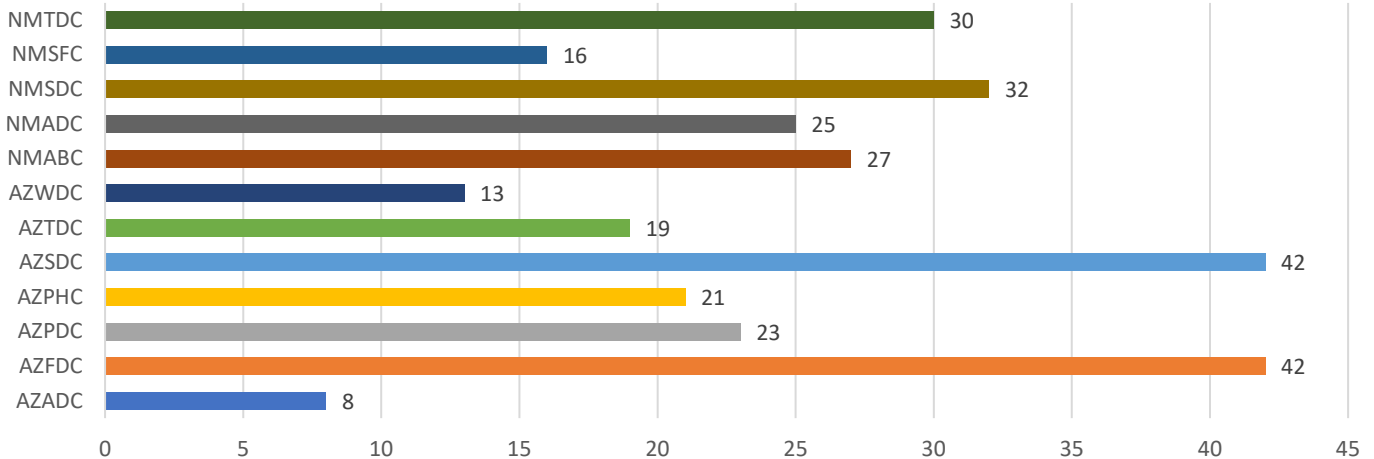


## Breakdown by Dispatch Zone

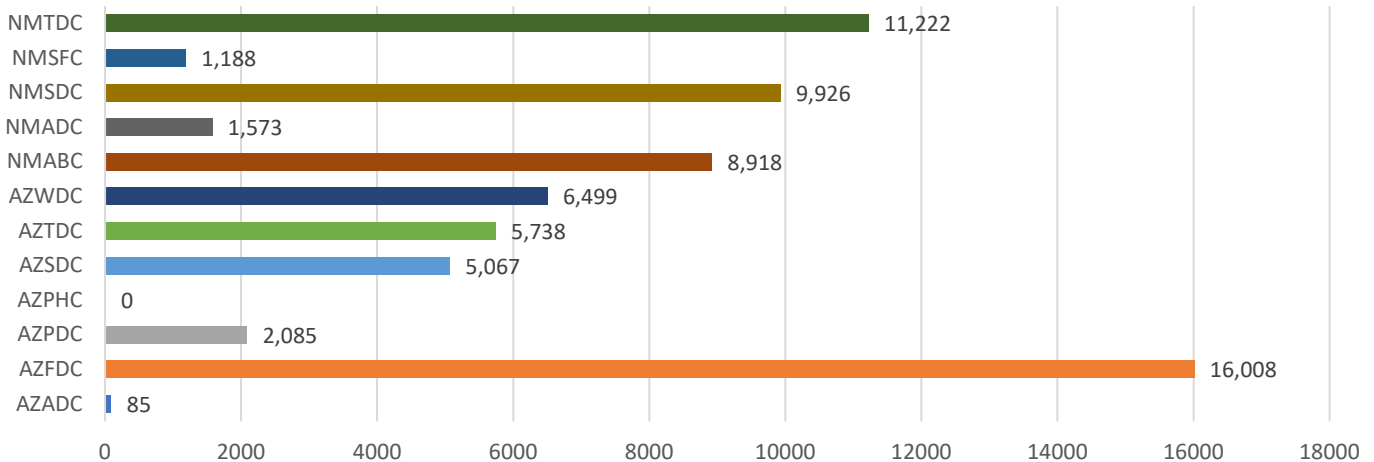
The spread of Rx fires by dispatch center was more even than the agency chart, but there was still variation in acreage treated.

Local Dispatch Center	Number of Fires	Acres Treated
AZADC	8	85
AZFDC	42	16008
AZPDC	23	2085
AZPHC	21	0
AZSDC	42	5067
AZTDC	19	5738
AZWDC	13	6499
NMABC	27	8918
NMADC	25	1573
NMSDC	32	9926
NMSFC	16	1188
NMTDC	30	11222
<b>Total</b>	<b>298</b>	<b>68310</b>

### Number of Rx Fires by Local Dispatch Center

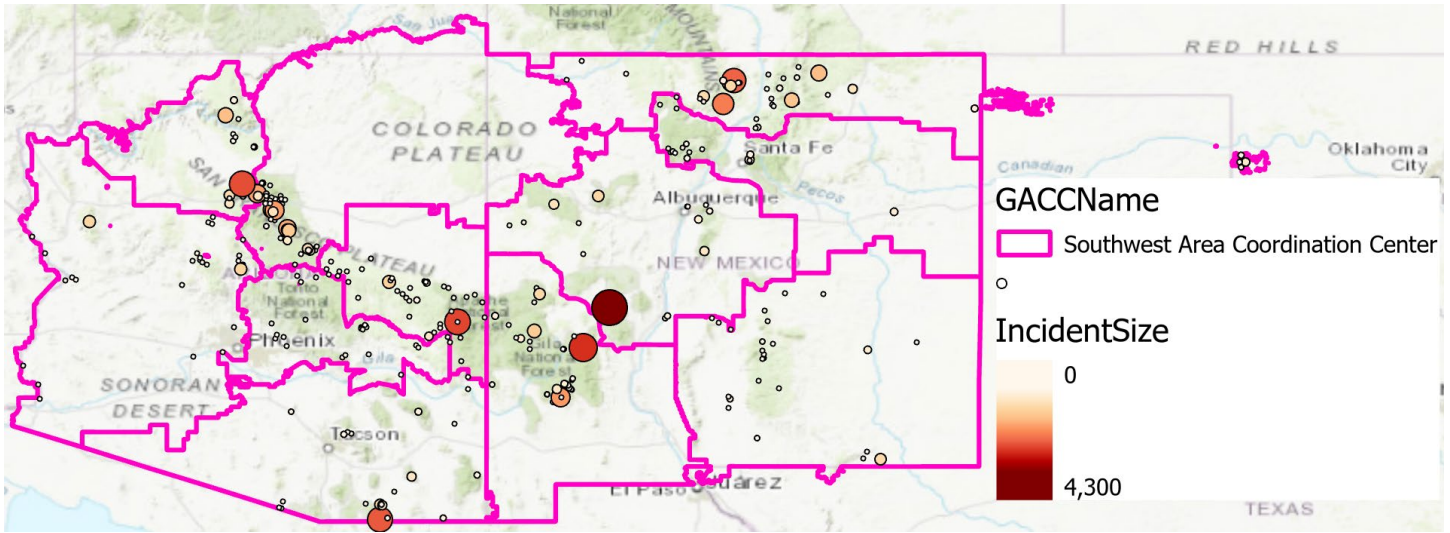


### Acres Treated By Local Dispatch Center



## SWA Prescribed fire Map

The map shows locations of prescribed fires reported in 2023. The larger the indicator, the larger the burn relative to the rest of the burns.



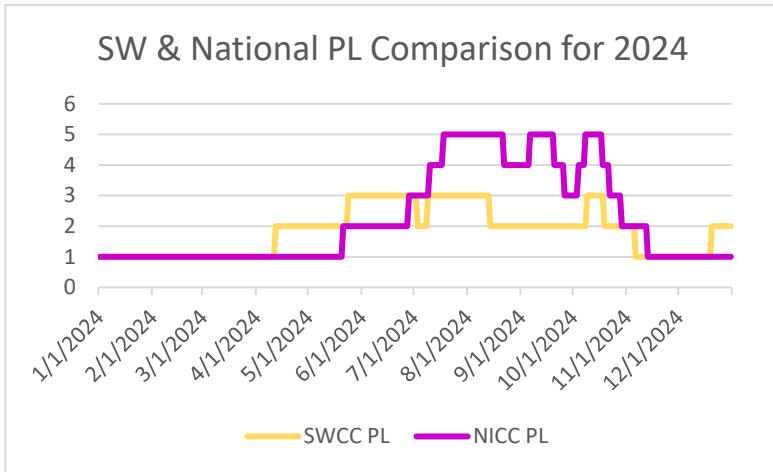
Angel Fire Fire Department Station 3 Pile Burn 16 – photo by C. Romo





# Preparedness Levels

The SWA experienced comparatively light fire season, spending 0 days at either PL 4 or PL 5. The National Preparedness Level hit PL 5 on three separate occasions, spending a near-record 59 days at PL 5, with 37 days at PL 4. This demonstrates that the Nation overall had a more intense fire season than the Southwest Area, more than doubling the 5-year and 10-year averages of 40 days at a National PL of 4 or 5.

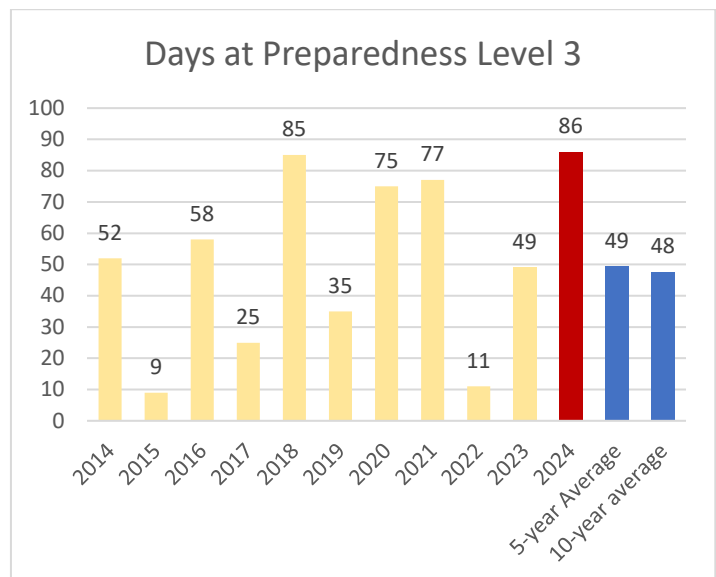
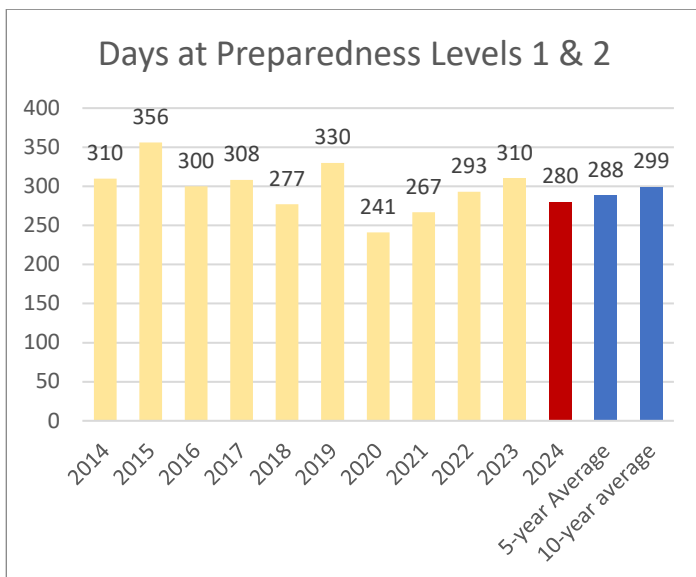


SWA PL Dates

PL	Start	End	# Days
2	12/20/2024	12/31/2024	12
1	11/6/2024	12/19/2024	44
2	10/19/2024	11/5/2024	19
3	10/9/2024	10/18/2024	10
2	8/14/2024	10/8/2024	56
3	7/9/2024	8/13/2024	36
2	7/3/2024	7/8/2024	6
3	5/24/2024	7/2/2024	40
2	4/12/2024	5/23/2024	42
1	1/1/2024	4/11/2024	102

Total Number of Days at Each Preparedness Level for SWA

PL	Jan	Feb	Mar	Apr	May	Jun	Jul	Aug	Sep	Oct	Nov	Dec	Total
1	31	29	31	11	0	0	0	0	0	0	25	19	146
2	0	0	0	19	23	0	6	18	30	21	5	12	134
3	0	0	0	0	8	30	25	13	0	10	0	0	86
4	0	0	0	0	0	0	0	0	0	0	0	0	0
5	0	0	0	0	0	0	0	0	0	0	0	0	0
<b>Total:</b>	<b>31</b>	<b>29</b>	<b>31</b>	<b>30</b>	<b>31</b>	<b>30</b>	<b>31</b>	<b>31</b>	<b>30</b>	<b>31</b>	<b>30</b>	<b>31</b>	<b>366</b>



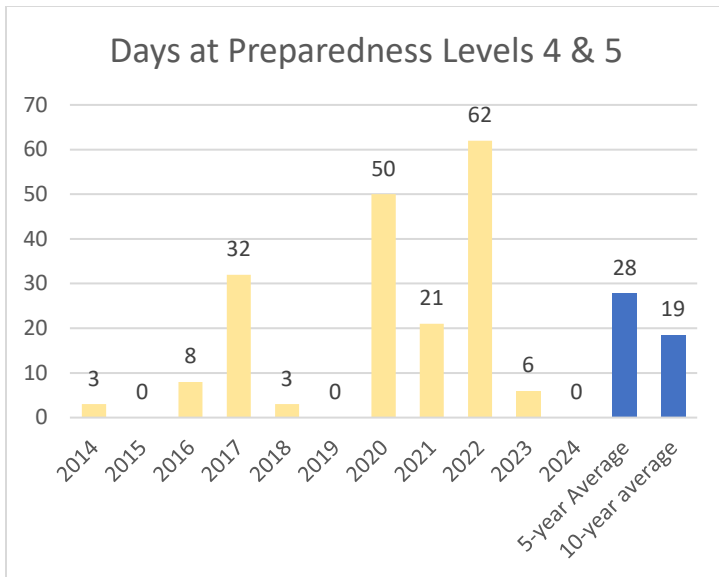


Photo of the Boulder View Fire –  
photo credit unknown



### Historical Summary of SWA Preparedness Levels

Given the lower PL values experienced this year, the average PL was greater than the 10-year average and below the 5-year average.

#### Total Days at Geographic Area Preparedness Levels

Year	PL 1	PL 2	PL 3	PL 4	PL 5	PL 1&2	PL4&5	Avg daily PL
2004	61	236	69	0	0	297	0	2.02
2005	73	233	28	31	0	306	31	2.05
2006	142	56	167	0	0	198	0	2.07
2007	231	84	46	4	0	315	4	1.52
2008	259	53	36	12	6	312	18	1.51
2009	95	208	62	0	0	303	0	1.91
2010	291	20	30	24	0	311	24	1.42
2011	122	143	28	42	30	265	72	2.22
2012	250	52	40	24	0	302	24	1.56
2013	277	37	14	37	0	314	37	1.48
2014	201	109	52	3	0	310	3	1.61
2015	224	132	9	0	0	356	0	1.41
2016	196	104	58	8	0	300	8	1.67
2017	226	82	25	24	8	308	32	1.65
2018	244	33	85	3	0	277	3	1.58
2019	246	84	35	0	0	330	0	1.42
2020	129	112	75	46	4	241	50	2.14
2021	68	199	77	16	5	267	21	2.15
2022	166	127	11	47	15	293	62	1.96
2023	124	186	49	6	0	310	6	1.83
2024	146	134	86	0	0	280	0	1.84
5-year Average	147	142	49	23	5	288	28	1.90
10-year average	182	117	48	15	3	299	19	1.74

# SWA Request Workload

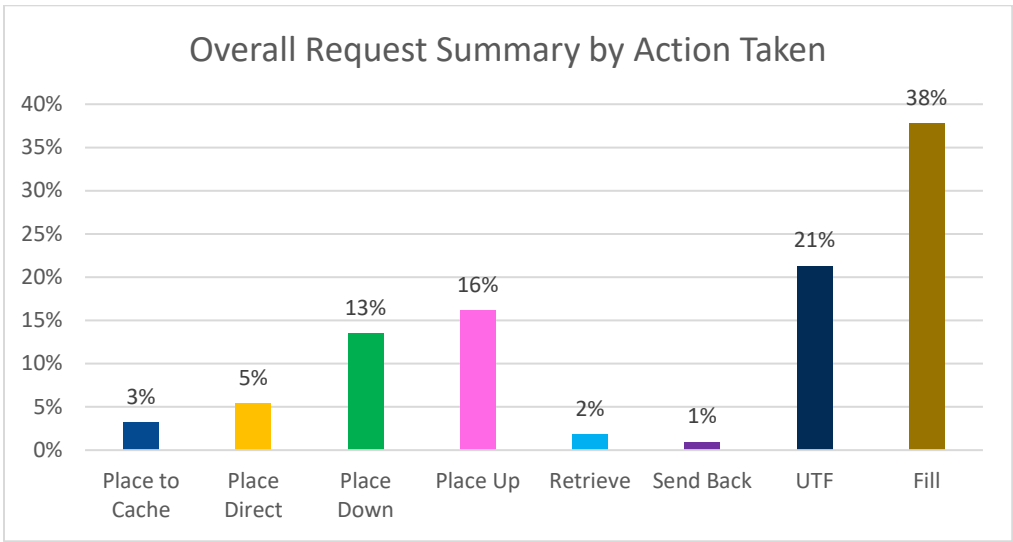
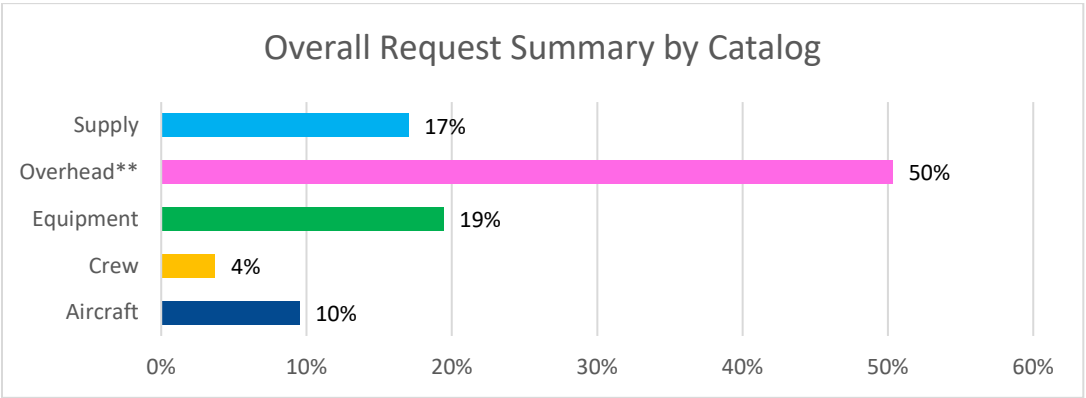
Reflecting an overall higher workload from NICC, overall actions on requests were up for 2024 as compared to 2023. In 2024 the SWA performed a total of 256,629 actions on requests, filling 44,951 of them; in 2023 the total number was 149,625 request actions, with 50,187 fills. Not counting the placement actions ("No Place", "Place To Cache", "Place Direct", "Place Down", and "Place Up"), there were a total of 13,725 Non-Filling Actions ("Retrieve", "Send Back", and "UTF") taken on requests, resulting in an overall fill: non-fill ratio of 3.2:1, or 3.2 fills, per non-fill.

The totals in the table below and used for the graphs are calculated using the overhead orders not counting subordinate orders, such as crew members or engine staffing.

Catalog / Action	Place to Cache	Place Direct	Place Down	Place Up	Retrieve	Send Back	UTF	Fill	Count
Aircraft		602	239	2,459	188	102	238	1,592	5,420
Crew		126	340	446	69	29	138	969	2,117
Equipment		819	1,852	1,264	258	125	1,673	5,081	11,072
Overhead*		4,510	5,463	4,738	585	333	10,901	30,636	57,166
Overhead**		1,007	5,227	4,486	423	263	10,075	7,210	28,691
Supply	1,810	498	11	560	99	24	21	6,673	9,696
Total*	1,810	6,555	7,905	9,467	1,199	613	12,971	44,951	85,471
Total**	1,810	3,052	7,669	9,215	1,037	543	12,145	21,525	56,996

\* Total Number of Overhead orders, including subordinates

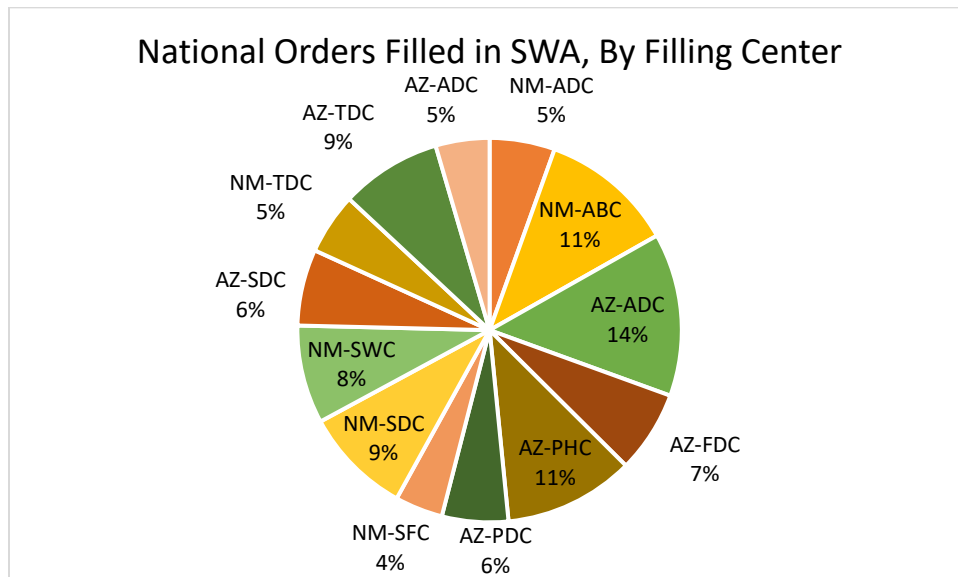
\*\* Overhead Orders not counting subordinates, used for calculation



## National Resource Requests Filled in SWA

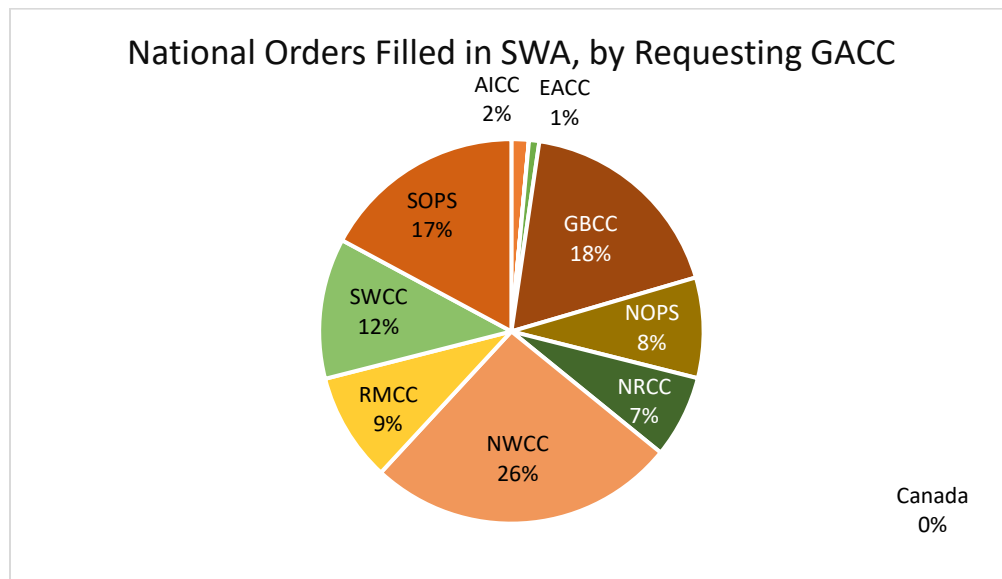
The SWA was requested to fill orders from the national dispatch community, supporting other geographic areas. Requests were filled at both the SW Geographic Area level and Local SWA Dispatch Centers, with the following breakdown by filling dispatch center.

Center / Catalog	Aircraft	Crew	Equipment	Overhead	Supply	Count
NM-ADC	4	6	65	382		457
NM-ABC	2	30	134	766	10	942
AZ-ADC	6	4	189	943		1,142
AZ-FDC		12	80	483		575
AZ-PHC	10	19	89	795		913
AZ-PDC	2	2	85	374	1	464
NM-SFC		5	47	283		335
NM-SDC	2	14	129	611		756
NM-SWC	147	5	1	535		688
AZ-SDC	3	14	49	469		535
NM-TDC	1	5	91	331		428
AZ-TDC	2	9	77	619	1	708
AZ-ADC	2	2	45	328		377
<b>Totals</b>	<b>181</b>	<b>127</b>	<b>1,081</b>	<b>6,919</b>	<b>12</b>	<b>8,320</b>



Resource orders filled by the SWA were sent to each of the other geographic areas, with Northwest, Great Basin and Southern California Geographic Areas being the largest customers of resource orders fulfilled by the SWA for external assignment.

<b>GACC / Catalog</b>	<b>Aircraft</b>	<b>Crew</b>	<b>Equipment</b>	<b>Overhead</b>	<b>Supply</b>	<b>Count</b>
<b>AICC</b>	3	2		116		121
<b>Canada</b>				1		1
<b>EACC</b>			6	66		72
<b>GBCC</b>	45	31	192	1,240	1	1,509
<b>NOPS</b>	17	6	149	531		703
<b>NRCC</b>	6	5	44	522		577
<b>NWCC</b>	28	33	252	1,842	10	2,165
<b>RMCC</b>	32	21	85	624		762
<b>SWCC</b>	19	4	91	869	1	984
<b>SOPS</b>	31	25	262	1,108		1,426
<b>Total</b>	181	127	1,081	6,919	12	8,320



### Department of Defense and MAFFS Mobilizations

Nationwide in 2024 there was one Department of Defense mobilization regarding Wildland Fire, which the southwest supported with 21 personnel. There were two MAFFS activations in California, one of which had utilized two SWA overhead resources.

### International Resource Mobilizations

Canada required significantly less assistance from the Interagency Wildland Fire Community than it had in 2023, ordering 8 individual overhead. Meanwhile the USA had the need for 60 personnel from Australia and New Zealand, along with two crews out of Canada. There were no Southwest resources associated with these mobilizations directly.

## IMT Summaries

Nationally, Incident Management Teams began undergoing a change in 2023 with some Geographic Areas converting their Incident Management Teams (IMTs) from Type 1 (IMT1) and Type 2 (IMT2) teams to the new Complex Incident Management Team (CIMT). The SWA joined remaining Geographic Areas in reclassifying their IMTs to the CIMT standard and no longer using the IMT1 and IMT2 typing standards for 2024. Despite some State agencies still utilizing IMT1s & IMT2s, none were ordered for the SWA in 2024.

## NIMO Teams

During the 2024 Fire season the SWA did not request a NIMO Team.

## The Southwest Area's Complex Incident Management Teams

The SWA had a more complex season for 2024 as compared to 2023. The SWA required at least one assignment from each of the SWA Complex Incident Management Teams and did not require any from out of the area. The SWA CIMTs were able to take at least one external assignment apiece, with many taking more than one and some assignments lasting into the fall. Over the course of 28 assignments SWA CIMT's spent 374 days assigned or travelling, with 210 of those days out of area.

### CIMT - Team 1 - Schwope

Dispatch Center	Incident Number	Incident Name	Mob Start	Demob End	Days Assigned
AZ-PHC	AZ-SCA-000487	Toyo	5/11/2024	5/17/2024	7
AZ-SDC	AZ-ASF-000416	Pius	7/9/2024	7/20/2024	12
CO-FTC	CO-ARF-000683	Alexander Mountain	7/31/2024	8/9/2024	10
OR-LFC	OR-SHR-240269	Warner Peak	8/9/2024	8/25/2024	17
ID-CIC	ID-SCF-240202	Red Rock	9/7/2024	9/8/2024	2
NV-SFC	NV-TMFX-031010	Davis	9/8/2024	9/20/2024	13
AZ-PHC	AZ-TNF-001989	Horton	12/29/2024	1/13/2025*	16

### CIMT - Team 2 - Truett

Dispatch Center	Incident Number	Incident Name	Mob Start	Demob End	Days Assigned
NM-SWC	NM-SWC-000001	2024 SWCC Support	6/18/2024	6/20/2024	3
AZ-PHC	AZ-SCA-001115	Watch	7/11/2024	7/20/2024	10
OR-COC	OR-PRD-000404	LONE ROCK	7/29/2024	8/12/2024	15
ID-NIC	ID-FCF-000001	2024 NIFC Large Fire Support	7/27/2024	7/29/2024	3
CA-BTCC	CA-BTU-013761	PARK	8/26/2024	8/31/2024	6
CA-BTCC	CA-BTU-013761	PARK	8/31/2024	9/20/2024	21
GA-SAC	NC-FE4-000003	FEMA FE4 TS/Hurricane Helene - IMT & Saw...	10/10/2024	10/25/2024	16
GA-SAC	NC-FE4-000005	FEMA FE4 TS/Hurricane Helene IMTs - NC	10/10/2024	10/10/2024	1

### CIMT - Team 3 - Rau

Dispatch Center	Incident Number	Incident Name	Mob Start	Demob End	Days Assigned
NM-ADC	NM-LNF-000227	BLUE 2	5/25/2024	6/8/2024	15
AZ-PHC	AZ-TNF-001130	Black	7/15/2024	7/24/2024	10
OR-BMC	OR-973S-000250	Battle Mountain Complex	8/4/2024	8/23/2024	20
AZ-PHC	AZ-TNF-001594	West	9/2/2024	9/24/2024	23
ID-CIC	ID-SCF-240202	Red Rock	10/7/2024	10/22/2024	16

### CIMT - Team 4 - Hulburd

Dispatch Center	Incident Number	Incident Name	Mob Start	Demob End	Days Assigned
NM-SFC	NM-SNF-000091	Indios	5/24/2024	6/10/2024	18
NM-SDC	NM-GNF-000318	Ridge	7/9/2024	7/19/2024	11
AZ-PHC	AZ-TNF-001300	Sand Stone	7/27/2024	8/12/2024	17
ID-SCC	ID-EIS-000311	Chimney	9/5/2024	9/19/2024	15

### CIMT - Team 5 - Gesser

Dispatch Center	Incident Number	Incident Name	Mob Start	Demob End	Days Assigned
NM-ADC	NM-MEA-000382	SOUTH FORK	6/17/2024	7/8/2024	22
ID-NIC	ID-FCF-000001	2024 NIFC Large Fire Support	7/24/2024	8/12/2024	20
OR-COC	OR-OCF-000501	0501 PR CRAZY CREEK	7/25/2024	8/11/2024	18
WY-CPC	WY-JOX-240427	House Draw	8/23/2024	9/7/2024	16

### The Southwest Area's Type 3 Incident Management Teams

The SWA Type 3 teams remained busy throughout their seasons and had five out-of-GACC assignments. Over the 107 days that the SWA Type 3 Teams were active, these teams responded to 24 assignments, at incident or in travel for 207 duty days. SWA Type 3 IMTs are managed by the local zone's boards within the SWA.

### IMT3 – CWZ – Central West Zone

Dispatch Center	Incident Number	Incident Name	Mob Start	Demob End	Days Assigned
AZ-PHC	AZ-TNF-000444	Horse	5/6/2024	5/14/2024	9
AZ-PHC	AZ-TNF-000559	Wildcat	5/19/2024	5/26/2024	8
AZ-PDC	AZ-IMR-000407	Refuge	5/26/2024	5/31/2024	6
AZ-PHC	AZ-TNF-000722	Adams	6/3/2024	6/11/2024	9
AZ-ADC	AZ-A4S-240980	SCD - Boulder View	6/28/2024	7/4/2024	7
AZ-PHC	AZ-SCA-001115	Watch	7/12/2024	7/13/2024	2
AZ-PHC	AZ-TNF-000001	2024 TNF Support	7/13/2024	7/25/2024	13
AZ-PHC	AZ-TNF-001130	Black	7/14/2024	7/18/2024	5
AZ-PHC	AZ-SCA-001110	Buckhorn	7/18/2024	7/29/2024	12

### IMT3 – NAZ – Northern Arizona Zone

Dispatch Center	Incident Number	Incident Name	Mob Start	Demob End	Days Assigned
AZ-FDC	AZ-COF-000176	Wolf	5/5/2024	5/15/2024	11
AZ-WDC	AZ-KNF-000431	BRAVO FIRE/AZSTATE	6/6/2024	6/11/2024	6

### IMT3 – WMZ – White Mountain Zone

Dispatch Center	Incident Number	Incident Name	Mob Start	Demob End	Days Assigned
AZ-SDC	AZ-FTA-000231	Bear	6/9/2024	6/17/2024	9

### IMT3 – ABZ – Albuquerque Zone

Dispatch Center	Incident Number	Incident Name	Mob Start	Demob End	Days Assigned
NM-ADC	NM-LNF-000227	BLUE 2	5/21/2024	5/26/2024	6
NM-ABC	NM-CIF-000275	FISHER	7/6/2024	7/29/2024	24
OR-NWC	OR-NWC-000009	2024 RAC MOB SUPPORT	7/30/2024	8/4/2024	6
OR-EIC	OR-WIF-240210	Pyramid	8/4/2024	8/5/2024	2
OR-NWC	OR-NWC-000009	2024 RAC MOB SUPPORT	8/5/2024	8/6/2024	2
OR-BIC	OR-BUD-002558	Porcupine	8/6/2024	8/11/2024	6
WA-CWC	WA-OWF-000576	THOMAS	8/11/2024	8/20/2024	10

### IMT3 – GLZ – Gila Zone

Dispatch Center	Incident Number	Incident Name	Mob Start	Demob End	Days Assigned
NM-SDC	NM-GNF-000334	Lolo	7/11/2024	7/15/2024	5

### IMT3 – NNMZ – Northern New Mexico Zone

Dispatch Center	Incident Number	Incident Name	Mob Start	Demob End	Days Assigned
NM-SFC	NM-SNF-000091	Indios	5/21/2024	5/31/2024	11
NM-SFC	NM-SNF-000091	Indios	6/9/2024	6/18/2024	10
NM-SWC	NM-FE6-000002	FEMA New Mexico Wildfires 2022	7/2/2024	7/17/2024	16

### IMT3 – PEZ – Pecos Zone

Dispatch Center	Incident Number	Incident Name	Mob Start	Demob End	Days Assigned
NM-ADC	NM-LNF-000227	BLUE 2	6/7/2024	7/1/2024	25



## Out of Area Teams

This year the SWA required one out-of-area Type 3 Incident Management Team, who was assigned for a full 14 days across multiple incidents. This need arose while 3 of the SWA type 3 teams were actively on assignment. OOA Type 3 IMTs are typically mobilized to the SWA due to several factors, such as high activity already within local dispatch zones and the geographic availability of local SWA Type 3 IMTs.

IMT3 - Nevada Team 3					
Dispatch Center	Incident Number	Incident Name	Mob Start	Demob End	Days Assigned
AZ-PHC	AZ-SCA-000600	Rocky	5/25/2024	5/29/2024	5
AZ-ADC	AZ-A3S-240643	Simmons	5/29/2024	6/1/2024	4
NM-SDC	NM-GNF-000002	2024 GILA SUPPORT	6/1/2024	6/10/2024	10
AZ-PDC	AZ-CRA-000521	Sourdough	6/6/2024	6/9/2024	4

Photo of the Horton Fire – photo credit unknown



# Buying Team Summary

The SWA utilized two out-of-area buying teams for 2024. SWA BUYTs responded to five SWA assignments and six out-of-area assignments, for 189 days assigned.

BUYT - SW Team 1 - Evans					
Dispatch Center	Incident Number	Incident Name	Mob Start	Demob End	Days Assigned
NM-SWC	NM-SWC-000001	2024 SWCC Support	5/25/2024	6/8/2024	15
NM-ADC	NM-MEA-000382	SOUTH FORK	6/18/2024	7/2/2024	15
NM-SWC	NM-SWC-000001	2024 SWCC Support	7/10/2024	7/23/2024	14
AZ-PHC	AZ-TNF-001300	Sand Stone	7/28/2024	8/12/2024	16
WY-TDC	WY-BTF-002416	Fish Creek	8/23/2024	9/11/2024	20
OR-EIC	OR-WIF-240016	2024 WIF Fire Support	10/3/2024	10/26/2024	24
ID-PAC	ID-PAF-005791	Logan	10/13/2024	10/20/2024	8
AZ-PHC	AZ-TNF-001989	Horton	12/29/2024	1/13/2025	16

BUYT - SW Team 2 - Tovar					
Dispatch Center	Incident Number	Incident Name	Mob Start	Demob End	Days Assigned
OR-COC	OR-PRD-000404	LONE ROCK	7/17/2024	8/12/2024	27
ID-BDC	ID-BOF-000683	WAPITI	8/23/2024	9/7/2024	16
ID-CIC	ID-SCF-240202	Red Rock	9/18/2024	10/3/2024	16

BUYT - RM - Freer/Sadler					
Dispatch Center	Incident Number	Incident Name	Mob Start	Demob End	Days Assigned
NM-ADC	NM-LNF-000552	BLUE FRONT	10/31/2024	11/2/2024	3

BUYT - SA Team 1 - Robinson					
Dispatch Center	Incident Number	Incident Name	Mob Start	Demob End	Days Assigned
AZ-PHC	AZ-TNF-001594	West	9/4/2024	9/26/2024	23

## Other Resource Summaries

### Crew-type Resources

In 2024, the SWA utilized a total of 845 Crew type fire resources including: Type 1 Crews (CRW1), Type 2-IA Crews (CR2I), Type 2 Crews (CRW2), Fuels Modules (FUMD), Suppression Modules (SMOD, SQAD), and type 1 and 2 Wildland Fire Modules (WFM1 & WFM2). The majority of these orders were filled by SWA crews, with 148 from out of area. In addition, the SWA provided 251 crew-type resources to external geographic areas, giving SWA Crew-type resources a total of 948 assignments. SWA Interagency Hotshot Crews went on a total of 327 assignments in 2024, averaging 14.8 per crew.

<b>GACC SWA Crews were sent to / Fill Catalog Item</b>	<b>CRW1</b>	<b>CR2I</b>	<b>CRW2</b>	<b>FUMD</b>	<b>SMOD</b>	<b>SQAD</b>	<b>WFM1</b>	<b>WFM2</b>	<b>Total</b>
<b>AICC</b>	5								5
<b>EACC</b>					6				6
<b>GBCC</b>	29	25							54
<b>NOPS</b>	9	9			1				19
<b>NRCC</b>	9			1	7			1	18
<b>NWCC</b>	32	18			6			3	59
<b>RMCC</b>	10	11			2				23
<b>SACC</b>	9			12	3			2	26
<b>SOPS</b>	18	19	2					2	41
<b>SWCC</b>	162	128	311	19	60	1	1	15	697
<b>Total</b>	283	210	313	32	85	1	1	23	948

Crews that came into the southwest were sourced from the following Geographic areas.

<b>External Crew Resources Providing GACC / Fill Catalog Item</b>	<b>CRW1</b>	<b>CR2I</b>	<b>CRW2</b>	<b>FUMD</b>	<b>SMOD</b>	<b>SQAD</b>	<b>WFM1</b>	<b>WFM2</b>	<b>Total</b>
<b>GBCC</b>	17	25		1		1			44
<b>NOPS</b>	2	9			1				12
<b>NRCC</b>	11	11			3			1	26
<b>NWCC</b>	6	6			5				17
<b>RMCC</b>	4	17					2	1	24
<b>SACC</b>	4		2		1				7
<b>SOPS</b>	1	17							18
<b>Total</b>	45	85	2	1	10	1	2	2	148

## Fire Engines

The Southwest Area utilized 2,448 Engines, with 359 coming from out of the area. As the season developed, the Southwest Area provided 1011 Engines for orders outside the Area.

<b>GACC SWA Engines were sent to / Fill Catalog Item</b>	<b>ENG1</b>	<b>ENG2</b>	<b>ENG3</b>	<b>ENG4</b>	<b>ENG5</b>	<b>ENG6</b>	<b>ENG7</b>	<b>Count</b>
<b>EACC</b>			2			10		12
<b>GBCC</b>			40	8	4	78		130
<b>NOPS</b>			110	5	8	131		254
<b>NRCC</b>			8	1		35		44
<b>NWCC</b>			43	16	4	178		241
<b>RMCC</b>			15	4	2	43		64
<b>SACC</b>			6			65		71
<b>SOPS</b>			121		2	72		195
<b>SWCC</b>	10	1	398	36	11	1632	1	2089
<b>Count</b>	10	1	743	70	31	2244	1	3100

The providing GACCs for engines that came to assist the southwest were as follows, no type 1, 2 or 7 engines were ordered.

<b>External Engine Resources Providing GACC / Fill Catalog Item</b>	<b>ENG3</b>	<b>ENG4</b>	<b>ENG5</b>	<b>ENG6</b>	<b>Count</b>
<b>AICC</b>				3	3
<b>EACC</b>				19	19
<b>GBCC</b>	31	14		22	67
<b>NRCC</b>		2	3	96	101
<b>NWCC</b>	14			30	44
<b>RMCC</b>	3	2		46	51
<b>SACC</b>				46	46
<b>SOPS</b>	18			10	28
<b>Count</b>	66	18	3	272	359

## Tactical Aircraft and Aircraft Support

The Southwest Area Utilized the following aircraft resources during the 2024 fire season: Multi-Engine Type 3 Airtankers also known as scoopers (ATM3), Single Engine Type 3 Airtankers also known as SEATs (ATS3), Large Airtankers Type 1 and Type 2 (LAT1 & LAT2), Very Large Airtankers (VLAT), Helicopter Type 1 Standard (HE1S), Helicopter Type 1 Restricted (HE1R), Helicopter Type 2 Standard (HE2S), Helicopter Type 2 Restricted (HE2R), Helicopter Type 3 Standard (HE3S), Unmanned Aircraft Rotor Wing Type 3 (UAR3), Fixed Wing Aerial Supervision Modules (FASM), Fixed Wing Air Tactical (FWAA), and Fixed Wing Lead Plane (FWLP).

In addition to these resources, there were also orders for aircraft support, including Temporary Flight Restrictions (STFR), Service Infrared Flight also known as Nighttime IR (SIRF), Fixed Wing Infrared aka Daytime IR (FWIR), Air to Air AM Frequencies (FQAA), Air to Ground FM Frequencies (FQAG), Air to Ground AM Frequencies (FQFF), and Tactical Frequencies (FQTA).

Aircraft type	# of Orders
<b>ATM3</b>	34
<b>ATS3</b>	209
<b>FASM</b>	33
<b>FWAA</b>	322
<b>FWLP</b>	78
<b>HE1S</b>	1
<b>HE1R</b>	151
<b>HE2S</b>	50
<b>HE2R</b>	2
<b>HE3S</b>	218
<b>LAT1</b>	307
<b>LAT2</b>	10
<b>UAR3</b>	31
<b>VLAT</b>	51
<b>Total</b>	1497

Combined, tankers were used for 611 orders, 368 of those being for Large Airtankers or Very Large Airtankers. Helicopters had 422 filled orders and UAS were utilized on 31 orders. Aerial Supervision (including Lead Planes) comprised 433 orders.

Overall, for 2024 in the SWA there were 334 Frequency requests filled, 85 Infrared flights, and 187 Temporary Flight Restrictions utilized.

Support Resource	# of Orders
<b>FQAA - Air to Air AM</b>	142
<b>FQAG - Air to Ground FM</b>	131
<b>FQFF - Air to Ground AM</b>	3
<b>FQTA - Tactical</b>	108
<b>FWIR - Fixed Wing, Infrared</b>	1
<b>SIRF - Service - Infrared Flight</b>	84
<b>STFR - Service - Temporary Flight Restriction</b>	187
<b>Count</b>	656

Blue 2 Fire – photo by Blue Ridge IHC

