

Southeast Arizona Zone

Response Plan

May 2023

Contents

I.	Introduction	2
A.	Purpose	2
B.	Terminology.....	2
1.	Response Level	2
2.	Response Zone.....	2
3.	Dispatch Center	2
4.	Pre-Planned Response Plan.....	2
C.	Policy and Guidance.....	3
II.	Response Level Matrix	3
A.	Response Level.....	3
III.	Response Plan – Run Card Example.....	4
A.	Run Card Overview	4
B.	Run Card Procedures:.....	5
1.	Discretionary Smoke Reports:	5
2.	Limited Response Plan:	5
C.	Southeast Zone Run Cards	7
Appendix A.....	Response Zones Map	33
Appendix B.....	Southeast Zone Dispatch Locations.....	34

This Page Intentionally Blank

Response Plan

I. Introduction

A. Purpose

Local-level Initial Pre-planned Response Plans, also referred to as “Run Cards”, specify the fire management response (e.g., number and type of suppression assets to dispatch) within a defined geographic area to an unplanned ignition, based on fire weather, fuel conditions, fire management objectives, and resource availability.

B. Terminology

1. Response Level

Response levels (e.g. “Low”, “Moderate”, “High”) are established to assist fire managers with decisions regarding the most appropriate response to an initial fire report until a qualified Incident Commander arrives at the incident. FireFamily Plus software is used to establish the Response Level thresholds. A statistical analysis of fire occurrence and historical weather has been completed for each FDRA. Each agency will utilize the same Response Levels calculated for each FDRA in response to wildland fires in the Southeastern Arizona Dispatch Zone.

2. Response Zone

Response Zones have been identified for the Southeastern Arizona Dispatch Zone. Response zones may be based on various criteria such as: common management objectives, land use, fire load, dispatch locations, estimated response times, WUI locations, topographical features, vegetation communities, etc. [**NOTE: It is the responsibility of the dispatch center to identify how response zones are identified. It is important to identify response zones prior to the creation of Fire Danger Rating Areas (FDRAs).**] A response zone map for the Southeastern Arizona Dispatch Zone is displayed in Appendix A. A table showing agency dispatch locations is displayed in Appendix B.

3. Dispatch Center

Each geographic area has established dispatch centers that mobilize and demobilize resources directly with the geographic area coordination center. The dispatch center is the focal point for mobilizing firefighting resources between units within the dispatch area responsibility, coordinating incoming resources into the dispatch area, dispatching resources mobilized out of the dispatch area, and collecting and disseminating fire intelligence information within dispatch area and with the geographic area coordination center.

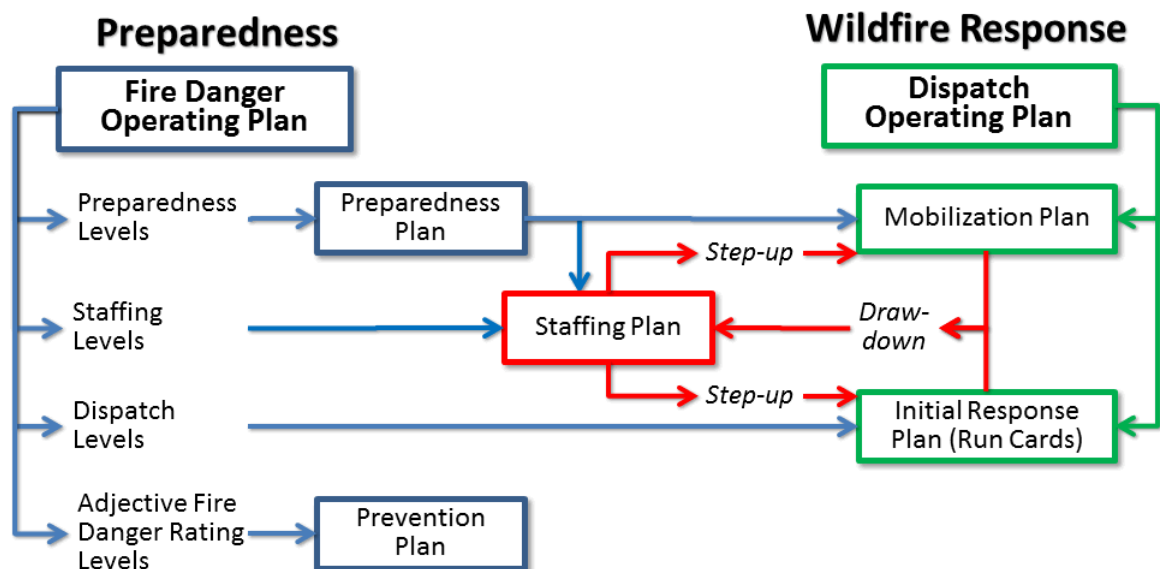
4. Pre-Planned Response Plan

Each dispatch center with the responsibility for initial response to wildland fires shall have a pre-planned response plan that allocates resources to new wildland fires in accordance with fire management direction, initial attack agreements, and established ordering procedures. The pre-planned response plan will be reviewed and updated annually prior to fire season.

C. Policy and Guidance

Policy and guidance regarding the development of Pre-Planned Response Plans can be found in chapter 19 of the Interagency Standards for Fire & Aviation Operations (Red Book).

Fire Management Officers will ensure that Pre-planned Response Plans are in place, utilized, and provide for initial response commensurate with guidance provided in the FMP and/or LRMP. Initial Pre-planned Response Plans will reflect agreements and annual operating plans and will be reviewed annually prior to fire season. These plans may be modified as needed during fire season to reflect the availability of national, prepositioned, and/or severity resources. Specific agency directives and interagency guidance requires numerous unit plans and guides to meet fire preparedness and wildfire response objectives. Some of these plans and guides are inter-related; one or more plans/guides provide the basis for other plans/guides. The Response Plan is an operational plan tiered from the Fire Danger Operating Plan as shown below:



II. Response Level Matrix

A. Response Level

Agency personnel use the response level (dispatch level) to assign an appropriate mix of suppression resources to a reported wildland fire based upon fire danger potential: “Low”, “Moderate”, “High” (Table 1). Response levels are derived from the most appropriate NFDRS index and/or component that have a high level of correlation to historical fire occurrence. Burning Index (BI) with NFDRS Fuel Model Y has been determined to be the most appropriate NFDRS index that statistically correlates to the potential for large fires to occur. Due to the ability of BI to reflect the most current fire danger potential, and the Tucson Dispatch Center’s ability to track

agency personnel throughout the course of any given day, BI will be computed and implemented for initial attack response levels until a qualified Incident Commander evaluates the need for the dispatched resources.

Response Level Matrix Tucson Dispatch Center

Fire Danger Rating Area (FDRA)	Burning Index (BI), Fuel Model Y		
Sonoran	0-27	28-45	46+
Desert Grasslands	0-29	30-44	45+
Forest/Woodland	0-18	19-33	34+
Dispatch Level:	Low	Moderate	High

Table 1. Response Level Matrix developed using Burning Index (BI) and fuel model Y fire business breakpoints. Analysis parameters: Fire Season (March 1st – August 31st) 2013 – 2022; analysis based on conditional probability – fire days only.

Response Levels will be established for each day utilizing the Response Level matrix (Table 1). Each FDRA has an assigned Special Interest Group (SIG) for the purposes of calculating the daily response level (see analyses and decision point range determinations in this Response Plan). The statistical analyses for this response plan was conducted using FireFamilyPlus (FFP) version 5. Conditional Probability analyses for “Fire-Days only” was applied for each FDRA analysis using Burning Index (BI) as the analysis variable. The analysis period was defined as “Fire Season” (March 1st - August 31st) beginning in 2013 through 2022. “All” fires were selected for the fire cause for all three FDRAs.

Duty Officers will retain the discretion to set their unit to a different response level than indicated by the calculated value for any given fire day, or to modify the response level for any given incident.

III. Response Plan – Run Card Example

A. Run Card Overview

Effective Dates: [April 15 through as determined by FMOs.]

Beyond these dates, notification of smoke reports will be made directly to the appropriate jurisdictional Duty Officer.

The Interagency Run Cards are developed by a group of interagency representatives to provide guidance to the Taos and Santa Fe Dispatch Centers for initial attack dispatching of wildland fire suppression resources within pre-identified geographic areas (response zones).

The run cards will be used when a wildfire is reported and doesn’t meet the discretionary smoke report criteria listed below. When an NWCG qualified Incident Commander is on scene of the fire, they may adjust the pre-established initial attack response as identified on the run card by cancelling resources currently enroute (or about to be dispatched) or by ordering additional resources as needed. Until such time as an IC is on scene, the Duty Officer is responsible for the fire response and

can modify the run card as necessary.

During periods of large/multiple fire activity, when there are not enough resources to fill the run cards, the Duty Officers from cooperating agencies will be available to determine incident prioritization and response.

B. Run Card Procedures:

- During working hours, the Tucson Dispatch Center will dispatch the closest available resource according to the Response Plan.
- After resource duty hours, dispatchers will contact the jurisdictional Duty Officer, who will determine the level of response.
- Volunteer fire departments (or any other resource not dispatched by the Tucson Dispatch Center will not be considered as meeting the run card requirements for numbers of resources during the initial attack dispatch.

1. Discretionary Smoke Reports:

When any of the following smoke reports are received, the run card will not be sent, and the jurisdictional Duty Officer will be contacted to determine the response.

- Federal Aviation Administration (FAA) Report.
- Abandoned Campfires, when clearly stated that it is still within the ring.
- Incidents that local volunteer fire departments have responded to or are on scene and are requesting no additional resources.

2. Limited Response Plan:

Periodically Southeastern Arizona Dispatch Zone experiences widespread lightning activity resulting in numerous starts, many of these single tree lightning strikes. It is not possible to dispatch the number and type of resources called for in the run card plan to each of these fires. This plan is designed to provide guidance to Tucson Dispatch Center personnel in order to coordinate an initial response under these multiple start conditions (generally considered 3 or more starts).

Under circumstances where multiple starts are likely to occur (i.e., forecasted LAL 6) or are occurring and each FDRA is at a Response Level of "Moderate" or higher the Southeastern Arizona Zone run card plan may be suspended and guidance provided by area Duty Officers for initial response to new starts. It is desired that the Duty Officer's meet at the Tucson Dispatch Center to provide coordinated guidance to the floor supervisor whenever possible. A MAC group call may be initiated if meeting in person is not possible.

Duty Officers should consider using the following priorities for dispatching resources*:

1. When there is a direct threat to human life.
2. When there is a direct threat to homes or communities.

3. When there is a direct threat to other high value infrastructure or improvements.
4. When the fire is in an identified sage grouse protection area.
5. All others

Until such time as the Duty Officers are able to provide coordinated direction to the Tucson Dispatch Center, the floor supervisor is authorized to determine the fire priorities based on given direction and make modifications to the established run card response during multiple start events.

During circumstances where there are no longer resources available to be dispatched to a new smoke report, Tucson Dispatch Center personnel will notify the Duty Officers of each new report and they will, considering the priorities mentioned above, make a determination of needed staffing adjustments and provide guidance to Tucson Dispatch Center personnel as to what resources to dispatch to each new smoke report.

*Additionally, if on any given day when all FDRAs are at a Response Level of "Moderate" or higher and the Tucson Dispatch Center recognizes the inability of daily staffed resources to fulfill a dispatch of any run card then the Southeastern Arizona Zone Response Plan/run cards may be suspended, and any start would use the prioritization process as identified above.

C. Southeast Zone Run Cards

RESPONSE ZONE DG-1

DOS CABEZAS – DRAGOONS - PELONCILLOS

Dos Cabezas Mountains, Dragoon, and Peloncillo Mountains

Procedures	<p>Dispatch closest forces based on current response level. See information below for number and type of resources to be dispatched.</p> <p>Suggested Closest Resources: <i>Douglas RD– (Type 6) E-511 & E-512</i> <i>AZDFFM: Douglas Crew or closest available.</i></p>
Aviation	<p>For aircraft operations, Military Airspace must be de-conflicted with Tucson Dispatch (520-202-2710).</p> <p>Safford Ops Center (SEAT Base) (928-348-9120)</p> <p><i>Peloncillos - Avoid aviation resources other than Air Attack for recon during initial attack. There is no need to use aviation unless fire threatens life / safety, or the few high value ranch headquarters.</i></p> <p>If aviation resources ordered, send "Aircraft Ordered" text to Aircraft Group</p>
Notifications	<ul style="list-style-type: none"> <input type="checkbox"/> Text: New Smoke Report Send To: Fire Information Group <input type="checkbox"/> Upon jurisdictional determination, appropriate agency Duty Officer(s) based on land ownership <input type="checkbox"/> Neighboring Wildland Dispatch (near boundary)
Hazards	<p>The Dragoon EMA has a large number of abandoned mines that are unmarked and obscured by vegetation. WUI adjacent to Dragoons. Gas lines, power lines.</p>
Notes	<ul style="list-style-type: none"> • Coordinate response with AZDFFM if threat to private or state land. • Additional Resources may be able through local fire departments. • Duty Officer, Incident Commander, or Air Attack will order additional ground/aerial resources as needed. • Peloncillos - Radio communications and cell coverage are poor. The further south you go in the Animas Valley the worse this gets.

FDRA Desert Grasslands	
Response Level	Resources
Low	Dispatch to call Unit/District Duty Officer
Moderate	1 Resource
High	2 Resources, Crew, Air Attack, Helicopter

***Resource is considered an Engine, Module, or Squad**

Suggested Radio Frequencies			
ADMN RPT or FIRE RPT	<u>USFS Repeater Name:</u> <i>Mule-Tone 2</i> <i>Monte Vista – Tone 9</i> <i>Antelope – Tone 3</i>	Group 12 Gila Dist. BLM Super Ch. 1: BLM RPT	<u>BLM Repeater Name:</u> <i>Heliograph – Tone 1</i>

RESPONSE ZONE DG-2

PATAGONIAS – WHETSTONES

Patagonia Mountains, Canelo Hills, Whetstone Mountains, San Rafael Valley, Canelo Work Center, Parker Lake, Lakeview Campground

Procedures	Dispatch closest forces based on current response level. See table below for number and type of resources to be dispatched. Suggested Closest Resources: <i>Sierra Vista RD: Type 3 E-331, Type 6 E-632, E-534</i> <i>BLM: Type 3 E-4337, Aravaipa IHC</i> <i>Nogales RD: Type 6 E-552, Crew 52</i>
Aviation	For aircraft operations, Military Airspace must be de-conflicted with Tucson Interagency Dispatch (520-202-2710). Safford Ops Center (SEAT Base) (928-348-9120) If aviation resources ordered, send "Aircraft Ordered" text to Aircraft Group
Notifications	<input type="checkbox"/> Text: New Smoke Report Send To: Fire Information Group <input type="checkbox"/> Upon jurisdictional determination, appropriate agency Duty Officer(s) based on land ownership <input type="checkbox"/> Neighboring Wildland Dispatch (near boundary)
Hazards	WUI, power lines, gas lines, International Border, Ft Huachuca air space.
Notes	<ul style="list-style-type: none"> Coordinate response with AZDFFM if threat to private or state land. Additional Resources may be able through local fire departments. Duty Officer, Incident Commander or Air Attack will order additional ground/aerial resources as needed.

FDRA Desert Grasslands	
Response Level	Resources
Low	Dispatch to call Unit/District Duty Officer
Moderate	1 Resource, Air Attack
High	2 Resources, Crew, Air Attack, Helicopter

***Resource is considered an Engine, Module, or Squad**

Suggested Radio Frequencies			
ADMN RPT or FIRE RPT	<u>USFS Repeater Name:</u>	Group 12 Gila Dist. BLM Super Ch. 1: BLM RPT	<u>BLM Repeater Name:</u>
	Mule - Tone 2 Hopkins -Tone 5 Red – Tone 7 Portable 1 –Tone 10		Mt Lemmon – Tone 4 Mule – Tone 3

RESPONSE ZONE DG-3

FT. HUACHUCA

East Range, Lower elevations on Fort

Procedures	<p>Dispatch closest forces based on current response level. See table below for number and type of resources to be dispatched.</p> <p>Suggested Closest Resources: <i>Sierra Vista RD: Type 3 - E-331. Type 6 - E-632, E-534</i> <i>BLM: Type 3 E-4337, Aravaipa IHC</i> <i>DOD: FHU Fire resources, Type 1 Helicopter</i></p>
Aviation	<p>For aircraft operations, Military Airspace must be de-conflicted with Tucson Interagency Dispatch (520-202-2710).</p> <p>* Contact DO before launching aircraft.</p> <p>If aviation resources ordered, send "Aircraft Ordered" text to Aircraft Group</p>
Notifications	<ul style="list-style-type: none"> <input type="checkbox"/> Text: New Smoke Report Send To: Fire Information Group <input type="checkbox"/> Upon jurisdictional determination, appropriate agency Duty Officer(s) based on land ownership <input type="checkbox"/> Neighboring Wildland Dispatch (near boundary)
Hazards	WUI, power lines, gas lines, Ft Huachuca air space.
Notes	<ul style="list-style-type: none"> • Contact Duty Officer for special notifications. • Coordinate response with AZDFFM if threat to private or state land. • Additional Resources may be available through local fire departments. • Duty Officer or Incident Commander will order additional ground/aerial resources as needed.

FDRA Desert Grasslands	
Response Level	Resources
Low	Dispatch to call Unit/District Duty Officer
Moderate	1 Resource
High	2 Resources

***Resource is considered an Engine, Module, or Squad**

Suggested Radio Frequencies			
ADMN RPT or FIRE RPT	<i>Repeater Name:</i> <i>Mule – Tone 2</i>	Group 12 Gila Dist. BLM Super Ch. 1: BLM RPT	<u><i>BLM Repeater Name:</i></u> <i>Mule – Tone 3</i>

RESPONSE ZONE DG-4

SANTA RITAS & TUMACACORIS

Buenos Aires National Wildlife Refuge, Baboquivari Mountains, Pena Blanca Canyon and Lake, Patagonia Lake, Pajarito Wilderness, Sycamore Canyon, Montana Peak, Ruby Ghost town, Cumaro Mountain, Arivaca Lake, Bartolo Mountain, Atascosa Peak, Nogales, Rio Rico, Tubac, International Border, I-19 corridor

Procedures	Dispatch closest forces based on current response level. See table below for number and type of resources to be dispatched. Suggested Closest Resources: <i>Nogales RD: Type 6 - E-621, E-622. Crew 52</i> <i>Buenos Aires Refuge: Type 6 – E-2143, E-2163</i> <i>Tucson Helibase: Helicopter 320</i> <i>AZDFFM: Tucson 1 Crew</i>
Aviation	For aircraft operations, Military Airspace must be de-conflicted with Tucson Interagency Dispatch (520-202-2710). Safford Ops Center (SEAT Base) (928-348-9120) If aviation resources ordered, send "Aircraft Ordered" text to Aircraft Group
Notifications	<input type="checkbox"/> Text: New Smoke Report Send To: Fire Information Group <input type="checkbox"/> Upon jurisdictional determination, appropriate agency Duty Officer(s) based on land ownership <input type="checkbox"/> Neighboring Wildland Dispatch (near boundary) <input type="checkbox"/> Forest Boarder Liaison <input type="checkbox"/> Catalina Ranger District or Duty Officer for fire threatening Tumacacori National Monument.
Hazards	Border Protocols should be followed, all WUI Hazards could be encountered {power lines, gas lines, etc.}. Abandon mines.
Notes	Nogales Ranger District also has suppression responsibilities for the Tumacacori National Monument.

FDRA Desert Grasslands	
Response Level	Resources
Low	Dispatch to call Unit/District Duty Officer
Moderate	2 Resources
High	2 Resources, Crew, Air Attack, Helicopter

***Resource is considered an Engine, Module, or Squad**

Suggested Radio Frequencies			
ADMN RPT or FIRE RPT	<u>USFS Repeater Name:</u> <i>Atascosa - Tone 3</i> <i>Hopkins - Tone 5</i> <i>Red - Tone 7</i>	Group 13 Gila Dist. Coronado CNF Ch. 1: BLM RPT	<u>USFS Repeater Name:</u> <i>Atascosa - Tone 3</i> <i>Hopkins - Tone 5</i> <i>Red - Tone 7</i>

RESPONSE ZONE DG-5

SAN PEDRO NORTH

North - Community of Oracle, Peppersauce Campground, American Flag Mine, Apache Peak

Central - Pusch Ridge Wilderness, Sabino Canyon, Bear Canyon, Bellota Ranch, Redington Pass

South – Tanque Verde Ridge, Mica Mountain, Rincon Peak, Turkey Creek, Miller Canyon, Happy Valley

Procedures	<p>Dispatch closest forces based on current response level. See table below for number and type of resources to be dispatched.</p> <p>Suggested Closest Resources: <i>Santa Catalina RD: (Type 3) E-551, (Type 6) E-652</i> <i>Tucson Helibase – (Type 3) Helicopter 320</i> <i>Saguaro National Park: Saguaro Wildland Fire Module</i> <i>AZDFFM: Tucson 1 Crew</i> <i>Oracle FD, Golder Ranch FD, Rural Metro FD, Rincon Valley FD</i></p>
Aviation	<p>For aircraft operations, Military Airspace must be de-conflicted with Tucson Interagency Dispatch (520-202-2710).</p> <p>Safford Ops Center (SEAT Base) (928-348-9120)</p> <p>If aviation resources ordered, send “Aircraft Ordered” text to Aircraft Group</p>
Notifications	<ul style="list-style-type: none"> <input type="checkbox"/> Text: New Smoke Report Send To: Fire Information Group <input type="checkbox"/> Upon jurisdictional determination, appropriate agency Duty Officer(s) based on land ownership <input type="checkbox"/> Neighboring Wildland Dispatch (near boundary)
Hazards	List any known hazards, e.g. WUI, power lines, gas lines, etc.
Notes	<ul style="list-style-type: none"> • Coordinate response with AZDFFM if threat to private or state land. • Additional resources may be available in Sabino Staging during times of Moderate to High Dispatch Levels. • Wildland Urban Interface is present throughout the whole San Pedro North Zone • Air Attack and/or Duty Officer, Incident Commander will order additional Aerial Resources as needed (Air Tankers and Helicopters)

FDRA Desert Grasslands	
Response Level	Resources
Low	Dispatch to call Unit/District Duty Officer
Moderate	1 Resource
High	2 Resources, Crew, Air Attack, Helicopter

***Resource is considered an Engine, Module, or Squad**

Suggested Radio Frequencies			
ADMN RPT or FIRE RPT	<u>USFS Repeater Name:</u> <i>Bigelow - Tone 4</i> <i>Lemmon - Tone 8</i>	Group 12 Gila Dist. BLM Super Ch. 1: BLM RPT	<u>BLM Repeater Name:</u> <i>Lemmon – Tone 4</i>

RESPONSE ZONE DG-6

ARAVAIPA-SULPHUR SPRINGS NORTH

Santa Teresa Mtns., Sulphur Springs Valley, Fort Grant

Procedures	<p>Dispatch closest forces based on current response level. See table below for number and type of resources to be dispatched.</p> <p>Suggested Closest Resources: <i>Safford RD: (Type 6) E-641, E-642. P543</i> <i>BLM: (Type 6) E-4664, E-4665</i> <i>AZDFFM: Fort Grant Crew</i></p>
Aviation	<p>For aircraft operations, Military Airspace must be de-conflicted with Tucson Interagency Dispatch (520-202-2710).</p> <p>Safford Ops Center (SEAT Base) (928-348-9120)</p> <p>If aviation resources ordered, send "Aircraft Ordered" text to Aircraft Group</p>
Notifications	<ul style="list-style-type: none"> <input type="checkbox"/> Text: New Smoke Report Send To: Fire Information Group <input type="checkbox"/> Upon jurisdictional determination, appropriate agency Duty Officer(s) based on land ownership <input type="checkbox"/> Neighboring Wildland Dispatch (near boundary)
Hazards	WUI, power lines, gas lines, Ingress and Egress, Heat Related Hazards
Notes	<ul style="list-style-type: none"> Coordinate response with AZDFFM, and BLM if fire is within 1 miles of their jurisdiction Notify Duty Officer of fires within the Santa Teresa's and Santa Teresa Wilderness for special consideration Notify Duty Officer of any fires within 2 miles of identified WUI areas for additional resource response.

FDRA Desert Grasslands	
Response Level	Resources
Low	Dispatch to call Duty Officer
Moderate	1 Resource
High	1 Resource, Crew, Air Attack, Helicopter

***Resource is considered an Engine, Module, or Squad**

Suggested Radio Frequencies			
ADMN RPT or FIRE RPT	<u>USFS Repeater Name:</u> <i>Heliograph – Tone 6</i> <i>West Peak – Tone 1</i>	Group 12 Gila Dist. BLM Super Ch. 1: BLM RPT	<u>BLM Repeater Name:</u> <i>Heliograph – Tone 1</i> <i>West Peak – Tone 6</i>

RESPONSE ZONE DG-7

GILA MOUNTAINS

Gila Mountains, Turtle Mountain, Gila River

Procedures	<p>Dispatch closest forces based on current response level. See table below for number and type of resources to be dispatched.</p> <p>Suggested Closest Resources: <i>Safford BLM: (Type 6) E-4664, E-4665, Safford Crew (Type 2 Hand Crew), Aravaipa IHC</i> <i>Safford RD: (Type 6) E-641, E-642. P543</i> <i>AZDFFM: Fort Grant Crew</i> <i>Safford SEAT Base: (Check daily for aircraft availability)</i></p>
Aviation	<p>For aircraft operations, Military Airspace must be de-conflicted with Tucson Interagency Dispatch (520-202-2710).</p> <p>Safford Ops Center (SEAT Base) (928-348-9120)</p> <p>If aviation resources ordered, send "Aircraft Ordered" text to Aircraft Group</p>
Notifications	<ul style="list-style-type: none"> <input type="checkbox"/> Text: New Smoke Report Send To: Fire Information Group <input type="checkbox"/> Upon jurisdictional determination, appropriate agency Duty Officer(s) based on land ownership <input type="checkbox"/> Neighboring Wildland Dispatch (near boundary)
Hazards	<p>Known hazards: Mountainous terrain and limited access to many areas.</p> <p>Morenci and Jackal MOAs are located within this response zone.</p>
Notes	<p><u>Note:</u> San Carlos tribal lands border this response zone to the north (AZ-PHC).</p> <p>Apache-Sitgreaves NF lands are border this response zone to the northeast (AZ-SDC).</p>

FDRA Desert Grasslands	
Response Level	Resources
Low	Dispatch to call Unit/District Duty Officer
Moderate	1 Resource
High	2 Resources , Crew, Air Attack

***Resource is considered an Engine, Module, or Squad**

Suggested Radio Frequencies	
Group 12 Gila Dist. BLM Super Ch. 1: BLM RPT	<u>BLM Repeater Name:</u> <i>West Peak – Tone 6</i> <i>Guthrie – Tone 2</i>

RESPONSE ZONE DG-8

SAN SIMON NORTH

Peloncillo Mountains, Whitlock Mountains, San Simon Valley

Procedures	<p>Dispatch closest forces based on current response level. See table below for number and type of resources to be dispatched.</p> <p>Suggested Closest Resources: <i>Safford BLM: (Type 6) E-4664, E-4665, Safford Crew (Type 2 Hand Crew), Aravaipa IHC</i> <i>Safford RD: (Type 6) E-641, E-642. P-543</i> <i>AZDFFM: Fort Grant Crew</i> <i>Safford SEAT Base: (Check daily for aircraft availability)</i></p>
Aviation	<p>For aircraft operations, Military Airspace must be de-conflicted with Tucson Interagency Dispatch (520-202-2710).</p> <p>Safford Ops Center (SEAT Base) (928-348-9120)</p> <p>If aviation resources ordered, send "Aircraft Ordered" text to Aircraft Group</p>
Notifications	<ul style="list-style-type: none"> <input type="checkbox"/> Text: New Smoke Report Send To: Fire Information Group <input type="checkbox"/> Upon jurisdictional determination, appropriate agency Duty Officer(s) based on land ownership <input type="checkbox"/> Neighboring Wildland Dispatch (near boundary)
Hazards	<p>Known hazards: WUI in the northwest area of the response zone – Safford and outlying homes along Highway 191, high voltage power lines along east side of Highway 191, buried gas line along east side of Highway 191.</p> <p>The Morenci MOA covers a large portion of this response zone.</p>
Notes	<p><u>Note</u>: Note any special instructions (e.g. Coordinate response along [enter neighboring dispatch zone] border with [enter name of neighboring dispatch center]).</p>

FDRA Desert Grasslands	
Response Level	Resources
Low	Dispatch to call Unit/District Duty Officer
Moderate	1 Resource
High	2 Resources, Crew, Air Attack

***Resource is considered an Engine, Module, or Squad**

Suggested Radio Frequencies	
Group 12 Gila Dist. BLM Super Ch. 1: BLM RPT	<u>BLM Repeater Name:</u> <i>Heliograph – Tone 1</i> <i>Guthrie – Tone 2</i>

RESPONSE ZONE DG- 9

GILA RIVER CORRIDOR

Gila River, Communities: Safford, Thatcher, Pima, Fort Thomas, Bylas

Procedures	Dispatch closest forces based on current response level. See table below for number and type of resources to be dispatched. Suggested Closest Resources: <i>Safford BLM: (Type 6) E-4664, E-4665, Safford Crew (Type 2 Hand Crew), Aravaipa IHC</i> <i>Safford RD: (Type 6) E-641, E-642. P543</i> <i>AZDFFM: Fort Grant Crew</i> <i>Safford SEAT Base: (Check daily for aircraft availability)</i>
Aviation	For aircraft operations, Military Airspace must be de-conflicted with Tucson Interagency Dispatch (520-202-2710). Safford Ops Center (SEAT Base) (928-348-9120) If aviation resources ordered, send "Aircraft Ordered" text to Aircraft Group
Notifications	<input type="checkbox"/> Text: New Smoke Report Send To: Fire Information Group <input type="checkbox"/> Upon jurisdictional determination, appropriate agency Duty Officer(s) based on land ownership <input type="checkbox"/> Neighboring Wildland Dispatch (near boundary)
Hazards	Known hazards: WUI and agricultural production fields along the Gila River corridor, power lines along Highway 70 are difficult to see from the air – Have on-scene resources advise firefighting aircraft of any power lines in vicinity of incident.
Notes	<u>Note:</u> Gila Box Riparian NCA located to the eastern side of this response zone. Numerous T&E species/habitat; check with DO on need for READ.

FDRA Desert Grasslands	
Response Level	Resources
Low	Dispatch to call Unit/District Duty Officer
Moderate	1 Resource
High	2 Resources , Crew, Air Attack

***Resource is considered an Engine, Module, or Squad**

Suggested Radio Frequencies	
Group 12 Gila Dist. BLM Super Ch. 1: BLM RPT	<u>BLM Repeater name:</u> <i>West Peak – Tone 6</i> <i>Guthrie – Tone 2</i>

RESPONSE ZONE DG- 10

SAN PEDRO RIPARIAN NCA

San Pedro river, Communities: Hereford, Palominas, Sierra Vista, Miracle Valley

Procedures	Dispatch closest forces based on current response level. See table below for number and type of resources to be dispatched. Suggested Closest Resources: <i>Sierra Vista BLM: (Type 3) E-4337, Aravaipa IHC</i> <i>Sierra Vista RD: (Type 3) E-331, (Type 6) E-632, E-534</i> <i>Libby ATB: (Check daily for aircraft availability)</i>
Aviation	For aircraft operations, Military Airspace must be de-conflicted with Tucson Interagency Dispatch (520-202-2710). Safford Ops Center (SEAT Base) (928-348-9120) If aviation resources ordered, send "Aircraft Ordered" text to Aircraft Group
Notifications	<input type="checkbox"/> Text: New Smoke Report Send To: Fire Information Group <input type="checkbox"/> Upon jurisdictional determination, appropriate agency Duty Officer(s) based on land ownership <input type="checkbox"/> Neighboring Wildland Dispatch (near boundary)
Hazards	Known hazards: Fort Huachuca military base located along the northwestern border of this response zone.
Notes	<u>Note:</u> Riparian National Conservation Area, sensitive riparian zone with multiple T&E species/habitat. Check with DO regarding need for READ.

FDRA Desert Grasslands	
Response Level	Resources
Low	Dispatch to call Unit/District Duty Officer
Moderate	1 Resource
High	2 Resources , Crew, Air Attack

***Resource is considered an Engine, Module, or Squad**

Suggested Radio Frequencies	
Group 12 Gila Dist. BLM Super Ch. 1: BLM RPT	<u>BLM Repeater Name:</u> <i>Mule – Tone 3</i>

RESPONSE ZONE DG- 11

LAS CIENEGAS NCA

Empire Mountains, Whetstone Mountains, Communities: Sonoita

Procedures	<p>Dispatch closest forces based on current response level. See table below for number and type of resources to be dispatched.</p> <p>Suggested Closest Resources: <i>Sierra Vista BLM: (Type 3) E-4337, Aravaipa IHC</i> <i>Sierra Vista RD: (Type 3) E-331, (Type 6) E-632, E-534</i> <i>Libby ATB: (Check daily for aircraft availability)</i></p>
Aviation	<p>For aircraft operations, Military Airspace must be de-conflicted with Tucson Interagency Dispatch (520-202-2710).</p> <p>Safford Ops Center (SEAT Base) (928-348-9120)</p> <p>If aviation resources ordered, send "Aircraft Ordered" text to Aircraft Group</p>
Notifications	<ul style="list-style-type: none"> <input type="checkbox"/> Text: New Smoke Report Send To: Fire Information Group <input type="checkbox"/> Upon jurisdictional determination, appropriate agency Duty Officer(s) based on land ownership <input type="checkbox"/> Neighboring Wildland Dispatch (near boundary)
Hazards	Known hazards: WUI located along southwest and west side of the NCA boundary along Highway 83.
Notes	<u>Note</u> : National Conservation Area, historical structures at ranch headquarters, multiple T&E species/habitat. Check with DO regarding need for READ.

FDRA Desert Grasslands	
Response Level	Resources
Low	Dispatch to call Unit/District Duty Officer
Moderate	1 Resource
High	2 Resources , Crew, Air Attack

***Resource is considered an Engine, Module, or Squad**

Suggested Radio Frequencies	
Group 12 Gila Dist. BLM Super Ch. 1: BLM RPT	<u>BLM Repeater Name:</u> Mule – Tone 3 Mt. Lemmon – Tone 4

RESPONSE ZONE DG-WUI

Wildland Urban Interface within the Desert Grasslands FDRA

Procedures	<p>Dispatch closest forces based on current response level. See table below for number and type of resources to be dispatched.</p> <p>Suggested Closest Resources: <i>Will be determined by Tucson Dispatch Center</i> <i>Libby ATB: (Check daily for aircraft availability)</i></p>
Aviation	<p>For aircraft operations, Military Airspace must be de-conflicted with Tucson Interagency Dispatch (520-202-2710). Safford Ops Center (SEAT Base) (928-348-9120) If aviation resources ordered, send "Aircraft Ordered" text to Aircraft Group</p>
Notifications	<ul style="list-style-type: none"> <input type="checkbox"/> Text: New Smoke Report Send To: Fire Information Group <input type="checkbox"/> Upon jurisdictional determination, appropriate agency Duty Officer(s) based on land ownership <input type="checkbox"/> Neighboring Wildland Dispatch (near boundary)
	Known hazards: WUI related hazards
Notes	<u>Note:</u>

FDRA Desert Grasslands	
Response Level	Resources
Low	Dispatch to call Unit/District Duty Officer
Moderate	2 Resources, Air Attack
High	3 Resources , Crew, Air Attack, Helicopter

*Resource is considered an Engine, Module, or Squad

RESPONSE ZONE FW-1

CHIRICAHUAS

Chiricahua Mountains, Chiricahua National Monument, Chiricahua Wilderness, Portal/Paradise, Rucker Canyon, Turkey Creek, Tex Canyon.

Procedures	Dispatch closest forces based on current response level. See table below for number and type of resources to be dispatched. Suggested Closest Resources: <i>Douglas RD: (Type 6) E- 511, E-512</i> <i>Bisbee-Douglas Airport: (Type2) Helicopter 318</i> <i>AZDFFM: Douglas Crew</i>
Aviation	For aircraft operations, Military Airspace must be de-conflicted with Tucson Interagency Dispatch (520-202-2710). If aviation resources ordered, send "Aircraft Ordered" text to Aircraft Group
Notifications	<input type="checkbox"/> Text: New Smoke Report Send To: Fire Information Group <input type="checkbox"/> Upon jurisdictional determination, appropriate agency Duty Officer(s) based on land ownership <input type="checkbox"/> Neighboring Wildland Dispatch (near boundary)
Hazards	WUI, power lines, gas lines, etc.
Notes	<ul style="list-style-type: none"> There should not be an immediate response within any of the Chiricahua Wilderness areas, beyond assessment from Air Attack, without prior discussion with the AA/District Ranger. Significant WUI areas exist around Paradise/Portal, East Turkey Creek and West Turkey Creek.

FDRA Forest Woodlands	
Response Level	Resources
Low	Dispatch to call Unit/District Duty Officer
Moderate	1 Resource
High	2 Resources, Crew, Air Attack, Helicopter

***Resource is considered an Engine, Module, or Squad**

Suggested Radio Frequencies	
ADMIN RPT or FIRE RPT	<u>USFS Repeater Name:</u> <i>Monte Vista – Tone 9</i> <i>Antelope – Tone 3</i>

RESPONSE ZONE FW-2

HUACHUCAS

Huachuca Mountains, Coronado National Memorial, Miller Wilderness, Reef Townsite Campground, Ramsey Vista Campsite.

Procedures	Dispatch closest forces based on current response level. See table below for number and type of resources to be dispatched. Suggested Closest Resources: <i>Sierra Vista RD: (Type 3) E-331, (Type 6) E-632, E-534</i> <i>BLM: (Type 3) E-4337, Aravaipa Crew</i>
Aviation	For aircraft operations, Military Airspace must be de-conflicted with Tucson Interagency Dispatch (520-202-2710). If aviation resources ordered, send "Aircraft Ordered" text to Aircraft Group
Notifications	<input type="checkbox"/> Text: New Smoke Report Send To: Fire Information Group <input type="checkbox"/> Upon jurisdictional determination, notify appropriate agency Duty Officer(s) based on land ownership <input type="checkbox"/> Neighboring Wildland Dispatch (near boundary)
Hazards	WUI, power lines, International Border, Ft Huachuca air space
Notes	<ul style="list-style-type: none"> • Coordinate response with AZDFFM if threat to private or state land. • Additional Resources may be able through local fire departments. • Notify the Duty Officer of fires within the Miller Wilderness boundary for special considerations. • Notify the Duty Officer for fires within the Coronado National Memorial for special considerations and notifications. • Duty Officer, Incident Commander or Air Attack will order additional ground/aerial resources as needed.

FDRA Forest Woodlands	
Response Level	Resources
Low	Dispatch to call Unit/District Duty Officer
Moderate	1 Resource
High	2 Resources, Crew, Air Attack, Helicopter

***Resource is considered an Engine, Module, or Squad**

Suggested Radio Frequencies	
ADMN RPT or FIRE RPT	<u>USFS Repeater Name:</u> <i>Mule – Tone 2</i> <i>Hopkins – Tone 5</i> <i>Red – Tone 7</i> <i>Portable 1 – Tone 10</i>

RESPONSE ZONE FW-3

FT. HUACHUCA UPPER ELEVATION

Garden Canyon, Huachuca Canyon, Blacktail Canyon

Procedures	<p>Dispatch closest forces based on current response level. See table below for number and type of resources to be dispatched.</p> <p>Suggested Closest Resources: <i>Sierra Vista RD: (Type 3) E-331, (Type 6) E-632, E-534</i> <i>BLM: (Type 3) E-4337, Aravaipa IHC</i> <i>DOD: FHU Fire resources</i></p>
Aviation	<p>For aircraft operations, Military Airspace must be de-conflicted with Tucson Interagency Dispatch (520-202-2710).</p> <p>* Contact DO before launching aircraft.</p> <p>If aviation resources ordered, send "Aircraft Ordered" text to Aircraft Group</p>
Notifications	<ul style="list-style-type: none"> <input type="checkbox"/> Text: New Smoke Report Send To: Fire Information Group <input type="checkbox"/> Upon jurisdictional determination, appropriate agency Duty Officer(s) based on land ownership <input type="checkbox"/> Neighboring Wildland Dispatch (near boundary)
Hazards	WUI, power lines, gas lines, Ft Huachuca air space.
Notes	<ul style="list-style-type: none"> • Contact Duty officer for special notifications • Additional Resources may be available through local fire departments. • Duty Officer or Incident Commander will order additional ground/aerial resources as needed.

FDRA Forest Woodlands	
Response Level	Resources
Low	Dispatch to call Unit/District Duty Officer
Moderate	1 Resource
High	2 Resources

***Resource is considered an Engine, Module, or Squad**

Suggested Radio Frequencies	
ADMN RPT or FIRE RPT	<u>USFS Repeater Name:</u> <i>Mule – Tone 2</i>

RESPONSE ZONE FW-4

SANTA RITAS

Mount Hopkins, Madera Canyon

Procedures	Dispatch closest forces based on current response level. See table below for number and type of resources to be dispatched. Suggested Closest Resources: <i>Nogales RD: (Type 6) E-621, E-622</i> <i>Tucson Helibase: (Type 3) Helicopter 320</i> <i>Green Valley, Tubac, Elephant Head FD</i>
Aviation	For aircraft operations, Military Airspace must be de-conflicted with Tucson Interagency Dispatch (520-202-2710)]. * Contact DO before launching aircraft. If aviation resources ordered, send "Aircraft Ordered" text to Aircraft Group
Notifications	<input type="checkbox"/> Text: New Smoke Report Send To: Fire Information Group <input type="checkbox"/> Upon jurisdictional determination, appropriate agency Duty Officer(s) based on land ownership <input type="checkbox"/> Neighboring Wildland Dispatch (near boundary) <input type="checkbox"/> Jurisdictional Sheriff Department and <i>Arizona Dispatch Center</i>
Hazards	Poor ingress and egress will be a major concern during evacuations. Poor to no safety zones. Limited water sources. All hazards associated with WUI {power lines, gas lines or septic tanks}
Notes	Refer to yearly action plans for Mount Hopkins and Madera Canyon

FDRA Forest Woodlands	
Response Level	Resources
Low	Dispatch to call Unit/District Duty Officer
Moderate	2 Resources, Air Attack, closest available state cooperators and jurisdictional Sheriff Department
High	2 Resources, Crew, Air Attack, Sheriff Department

***Resource is considered an Engine, Module, or Squad**

Suggested Radio Frequencies	
ADMN RPT or FIRE RPT	<u>USFS Repeater Name:</u> <i>Hopkins – Tone 5</i>

RESPONSE ZONE FW-5

RINCONS

Tanque Verde Ridge, Tanque Verde Peak, Helen's Dome, Mica Mountain, Manning Camp, Rincon Creek, Heart Break Ridge, Rincon Peak, Turkey Creek, Eagle Peak, Happy Valley, Distillery Canyon, Pistol Hill

Procedures	Dispatch closest forces based on current response level. See table below for number and type of resources to be dispatched. Suggested Closest Resources: <i>Santa Catalina RD: Type 3 Engine 551, Type 6 Engine 652</i> <i>Tucson Helibase: Type 3 Helicopter 320</i> <i>Saguaro National Park: Saguaro Wildland Fire Module</i>
Aviation	For aircraft operations, Military Airspace must be de-conflicted with Tucson Interagency Dispatch (520-202-2710). * Contact DO before launching aircraft. If aviation resources ordered, send "Aircraft Ordered" text to Aircraft Group
Notifications	<input type="checkbox"/> Text: New Smoke Report Send To: Fire Information Group <input type="checkbox"/> Upon jurisdictional determination, appropriate agency Duty Officer(s) based on land ownership <input type="checkbox"/> Neighboring Wildland Dispatch (near boundary)
Hazards	Density Altitude, Low Level Flights, Wilderness
Notes	<ul style="list-style-type: none"> • Coordinate response with AZDFFM if threat to private or state land. • Additional resources may be available in Sabino Staging during times of Moderate to High Dispatch Levels. • Additional Resources may be able through local fire departments. • Wildland Urban Interface is present throughout the whole San Pedro North Zone • Air Attack and/or Duty Officer, Incident Commander will order additional Aerial Resources as needed (Air Tankers and Helicopters) • Wilderness needs special considerations to take action

FDRA Forest Woodlands	
Response Level	Resources
Low	Dispatch to call Unit/District Duty Officer
Moderate	1 Resource
High	2 Resources, Crew, Air Attack, Helicopter

*Resource is considered an Engine, Module, or Squad

Suggested Radio Frequencies	
ADMN RPT or FIRE RPT	<u>USFS Repeater Name:</u> <i>Hopkins – Tone 5</i> <i>Lemmon – Tone 8</i>

RESPONSE ZONE FW-6

CATALINAS

Mount Lemmon, Ski Valley, Summerhaven, Observatories, Mount Bigelow, Sabino Canyon, Palisades, Windy Point, Rose Canyon Lake, Molino Basin, Organizational Ridge, multiple campgrounds

Procedures	Dispatch closest forces based on current response level. See table below for number and type of resources to be dispatched. Suggested Closest Resources: <i>Santa Catalina RD: (Type 3) Engine 551, (Type 6) Engine 652</i> <i>Tucson Helibase: (Type 3) Helicopter 320</i> <i>Saguaro National Park: Saguaro Wildland Fire Module</i> <i>Closest available cooperating Fire Departments: Mt. Lemmon Fire Department</i>
Aviation	For aircraft operations, Military Airspace must be de-conflicted with Tucson Interagency Dispatch (520-202-2710). * Contact DO before launching aircraft. If aviation resources ordered, send "Aircraft Ordered" text to Aircraft Group
Notifications	<input type="checkbox"/> Text: New Smoke Report Send To: Fire Information Group <input type="checkbox"/> Upon jurisdictional determination, appropriate agency Duty Officer(s) based on land ownership <input type="checkbox"/> Neighboring Wildland Dispatch (near boundary)
Hazards	Density Altitude, Power Lines, Highway, Communication Towers, WUI
Notes	<ul style="list-style-type: none"> Coordinate response with AZDFFM if threat to private or state land. Additional resources may be available in Sabino Staging during times of Moderate to High Dispatch Levels. Wildland Urban Interface is present throughout the whole San Pedro North Zone Air Attack and/or Duty Officer, Incident Commander will order additional Aerial Resources as needed (Air Tankers and Helicopters)

FDRA Forest Woodlands	
Response Level	Resources
Low	Dispatch to call Unit/District Duty Officer
Moderate	1 Resource
High	2 Resources, Crew, Air Attack, Helicopter

*Resource is considered an Engine, Module, or Squad

Suggested Radio Frequencies	
ADMN RPT or FIRE RPT	<u>USFS Repeater Name:</u> <i>Bigelow – Tone 4</i> <i>Hopkins - Tone 5</i> <i>Lemmon – Tone 8</i>

RESPONSE ZONE FW-7

GALIUIROS

Galiuro Mountains, Galiuro Wilderness

Procedures	<p>Dispatch closest forces based on current response level. See table below for number and type of resources to be dispatched.</p> <p>Suggested Closest Resources: <i>Safford RD: (Type 6) E-641, E-642. P543</i> <i>BLM: (Type 6) E-4664, E-4665</i> <i>AZDFFM: Fort Grant Crew</i> <i>Safford SEAT Base</i></p>
Aviation	<p>For aircraft operations, Military Airspace must be de-conflicted with Tucson Interagency Dispatch (520-202-2710).</p> <p>If aviation resources ordered, send "Aircraft Ordered" text to Aircraft Group</p>
Notifications	<ul style="list-style-type: none"> <input type="checkbox"/> Text: New Smoke Report Send To: Fire Information Group <input type="checkbox"/> Upon jurisdictional determination, appropriate agency Duty Officer(s) based on land ownership <input type="checkbox"/> Neighboring Wildland Dispatch (near boundary)
Hazards	Ranch properties, low level cable in High Creek
Notes	<ul style="list-style-type: none"> • Coordinate response with AZDFFM, and BLM if fire is within 1 mile of their jurisdiction • Notify Duty Officer of fires within the Galiuro Wilderness for special consideration • Notify Duty Officer of any fires within 2 miles of identified WUI areas for additional resource response

FDRA Forest Woodlands	
Response Level	Resources
Low	Dispatch to call Duty Officer
Moderate	1 Resource
High	1 Resource, Crew, Air Attack, Helicopter

***Resource is considered an Engine, Module, or Squad**

Suggested Radio Frequencies	
ADMIN RPT or FIRE RPT	<u>USFS Repeater Name:</u> <i>Heliograph – Tone 6</i> <i>West Peak – Tone 1</i>

RESPONSE ZONE FW-8

WINCHESTER MTNS

Procedures	<p>Dispatch closest forces based on current response level. See table below for number and type of resources to be dispatched.</p> <p>Suggested Closest Resources: <i>Safford RD: (Type 6) E-641, E-642. P543</i> <i>BLM: (Type 6) E-4664, E-4665</i> <i>AZDFFM: Fort Grant Crew</i> <i>Safford SEAT Base</i></p>
Aviation	<p>For aircraft operations, Military Airspace must be de-conflicted with Tucson Interagency Dispatch (520-202-2710).</p> <p>If aviation resources ordered, send "Aircraft Ordered" text to Aircraft Group</p>
Notifications	<ul style="list-style-type: none"> <input type="checkbox"/> Text: New Smoke Report Send To: Fire Information Group <input type="checkbox"/> Upon jurisdictional determination, appropriate agency Duty Officer(s) based on land ownership <input type="checkbox"/> Neighboring Wildland Dispatch (near boundary)
Hazards	Pipeline SE corner response area
Notes	<ul style="list-style-type: none"> • Coordinate response with AZDFFM, if fire is within 1 mile of their jurisdiction • Access to this response Area is challenging with many locked Gates

FDRA Forest Woodlands	
Response Level	Resources
Low	Dispatch to call Duty Officer
Moderate	1 Resource
High	1 Resource, Crew, Air Attack, Helicopter

*Resource is considered an Engine, Module, or Squad

Suggested Radio Frequencies	
ADMIN RPT or FIRE RPT	<u>USFS Repeater Name:</u> <i>Heliograph – Tone 6</i> <i>West Peak – Tone 1</i>

RESPONSE ZONE FW-9

PINALEÑOS

Mt. Graham, West Peak

Procedures	<p>Dispatch closest forces based on current response level. See table below for number and type of resources to be dispatched.</p> <p>Suggested Closest Resources: <i>Safford RD: (Type 6) E-641, E-642. P543</i> <i>BLM: (Type 6) E-4664, E-4665</i> <i>AZDFFM: Fort Grant Crew</i> <i>Safford SEAT Base</i></p>
Aviation	<p>For aircraft operations, Military Airspace must be de-conflicted with Tucson Interagency Dispatch (520-202-2710).</p> <p>If aviation resources ordered, send "Aircraft Ordered" text to Aircraft Group</p>
Notifications	<ul style="list-style-type: none"> <input type="checkbox"/> Text: New Smoke Report Send To: Fire Information Group <input type="checkbox"/> Upon jurisdictional determination, appropriate agency Duty Officer(s) based on land ownership <input type="checkbox"/> Neighboring Wildland Dispatch (near boundary)
Hazards	WUI, Power Line, Propane Tanks, Ingress and Egress, Radio Towers, Telescopes
Notes	<ul style="list-style-type: none"> • Coordinate response with AZDFFM, if fire is within 1 mile of their jurisdiction • Notify Duty Officer of any fires within 2 miles of identified WUI areas for additional resource response

FDRA Forest Woodlands	
Response Level	Resources
Low	Dispatch to call Duty Officer
Moderate	1 Resource, Air Attack
High	2 Resource, Crew, Air Attack, Helicopter

***Resource is considered an Engine, Module, or Squad**

Suggested Radio Frequencies	
ADMIN RPT or FIRE RPT	<u>USFS Repeater Name:</u> <i>Heliograph – Tone 6</i> <i>West Peak – Tone 1</i>

RESPONSE ZONE FW-WUI

Wildland Urban Interface within the Forest Woodland FDRA

Procedures	<p>Dispatch closest forces based on current response level. See table below for number and type of resources to be dispatched.</p> <p>Suggested Closest Resources: <i>Will be determined by Tucson Dispatch Center</i> <i>Libby ATB: (Check daily for aircraft availability)</i></p>
Aviation	<p>For aircraft operations, Military Airspace must be de-conflicted with Tucson Interagency Dispatch (520-202-2710).</p> <p>If aviation resources ordered, send "Aircraft Ordered" text to Aircraft Group</p>
Notifications	<ul style="list-style-type: none"> <input type="checkbox"/> Text: New Smoke Report Send To: Fire Information Group <input type="checkbox"/> Upon jurisdictional determination, appropriate agency Duty Officer(s) based on land ownership <input type="checkbox"/> Neighboring Wildland Dispatch (near boundary)
Hazards	Known hazards: WUI related hazards
Notes	<u>Note:</u>

FDRA Forest Woodlands	
Response Level	Resources
Low	Dispatch to call Unit/District Duty Officer
Moderate	2 Resources, Air Attack
High	3 Resources , Crew, Air Attack, Helicopter

***Resource is considered an Engine, Module, or Squad**

RESPONSE ZONE SON-1

SONORAN NORTH

Catalina State Park, Saguaro National Park (West, lower elevations of East), Tohono O’odham Nation, BLM

Procedures	Dispatch closest forces based on current response level. See table below for number and type of resources to be dispatched. Suggested Closest Resources: <i>Santa Catalina RD: Type 3 Engine 551, Type 6 Engine 652</i> <i>Tucson Helibase: Type 3 Helicopter 320</i> <i>Saguaro National Park: Saguaro Wildland Fire Module</i> <i>AZDFFM: Tucson 1 Crew, Florence Crew</i>
Aviation	For aircraft operations, Military Airspace must be de-conflicted with Tucson Interagency Dispatch (520-202-2710). Safford Ops Center (SEAT Base) (928-348-9120) If aviation resources ordered, send “Aircraft Ordered” text to Aircraft Group
Notifications	<input type="checkbox"/> Text: New Smoke Report Send To: Fire Information Group <input type="checkbox"/> Upon jurisdictional determination, appropriate agency Duty Officer(s) based on land ownership <input type="checkbox"/> Neighboring Wildland Dispatch (near boundary)
Hazards	List any known hazards, e.g. WUI, power lines, gas lines, etc.
Notes	<u>Note:</u> Note any special instructions (e.g. Coordinate response along [enter neighboring dispatch zone] border with [enter name of neighboring dispatch center]).

FDRA Sonoran	
Response Level	Resources
Low	Dispatch to call Unit/District Duty Officer
Moderate	1 Resource
High	2 Resources, Crew

***Resource is considered an Engine, Module, or Squad**

Suggested Radio Frequencies			
ADMN RPT or FIRE RPT	<u>USFS Repeater Name:</u> <i>Bigelow – Tone 4</i> <i>Hopkins - Tone 5</i> <i>Lemmon – Tone 8</i>	Group 12 Gila Dist. BLM Super Ch. 1: BLM RPT	<u>BLM Repeater Name:</u> <i>Pinal Peak – Tone 5</i> <i>Mt. Lemmon – Tone 4</i>

RESPONSE ZONE SON-2

SONORAN SOUTH

Organ Pipe National Monument, Cabeza Prieta Wilderness, Organ Pipe Wilderness, Tohono O'odham Nation, International Border

Procedures	Dispatch closest forces based on current response level. See table below for number and type of resources to be dispatched. Suggested Closest Resources: Sells (BIA/PPA): 2 - Type 6 Engines Organ Pipe NM (NPS): Type 7 Engine
Aviation	For aircraft operations, Military Airspace must be de-conflicted with Tucson Interagency Dispatch (520-202-2710). Safford Ops Center (SEAT Base) (928-348-9120) If aviation resources ordered, send "Aircraft Ordered" text to Aircraft Group
Notifications	<input type="checkbox"/> Text: New Smoke Report Send To: Fire Information Group <input type="checkbox"/> Upon jurisdictional determination, appropriate agency Duty Officer(s) based on land ownership <input type="checkbox"/> Neighboring Wildland Dispatch (near boundary)
Hazards	International Border Watch Outs
Notes	<u>Note:</u> Note any special instructions (e.g. Coordinate response along [enter neighboring dispatch zone] border with [enter name of neighboring dispatch center]).

FDRA Sonoran	
Response Level	Resources
Low	Dispatch to call Unit/District Duty Officer
Moderate	1 Resource, Air Attack, Law Enforcement
High	2 Resources, Crew, Air Attack, Law Enforcement

***Resource is considered an Engine, Module, or Squad**

Suggested Radio Frequencies	
ADMIN RPT or FIRE RPT	[Enter repeater name] [Enter repeater name]

RESPONSE ZONE SON-3

IRONWOOD FOREST NM

Silverbell Mountains, Sawtooth Mountains, Oskruge Mountains

Procedures	<p>Dispatch closest forces based on current response level. See table below for number and type of resources to be dispatched.</p> <p>Suggested Closest Resources: <i>Safford BLM: (Type 6) E-4664, E-4665, Safford Crew (Type 2 Hand Crew), Aravaipa IHC</i> <i>AZDFFM: Tucson 1, Florence</i> <i>Safford SEAT Base: (Check daily for aircraft availability)</i></p>
Aviation	<p>For aircraft operations, Military Airspace must be de-conflicted with Tucson Interagency Dispatch (520-202-2710).</p> <p>Safford Ops Center (SEAT Base) (928-348-9120)</p> <p>If aviation resources ordered, send "Aircraft Ordered" text to Aircraft Group</p>
Notifications	<ul style="list-style-type: none"> <input type="checkbox"/> Text: New Smoke Report Send To: Fire Information Group <input type="checkbox"/> Upon jurisdictional determination, appropriate agency Duty Officer(s) based on land ownership <input type="checkbox"/> Neighboring Wildland Dispatch (near boundary)
Hazards	Known hazards: Heavily used undocumented immigrant and drug trafficking area.
Notes	<p><u>Note:</u> Non-fire adapted Sonoran Desert vegetation. Check with DO on need for READ and law enforcement.</p> <p>Tohono O'odham tribal lands border this response zone to the southwest.</p>

FDRA Sonoran	
Response Level	Resources
Low	Dispatch to call Unit/District Duty Officer
Moderate	1 Resource
High	2 Resources , Crew, Air Attack

***Resource is considered an Engine, Module, or Squad**

Suggested Radio Frequencies	
Group 12 Gila Dist. BLM Super Ch. 1: BLM RPT	<u>BLM Repeater Name:</u> <i>Mt. Lemmon – Tone 4</i>

RESPONSE ZONE SON-WUI

Wildland Urban Interface within the Sonoran FDRA

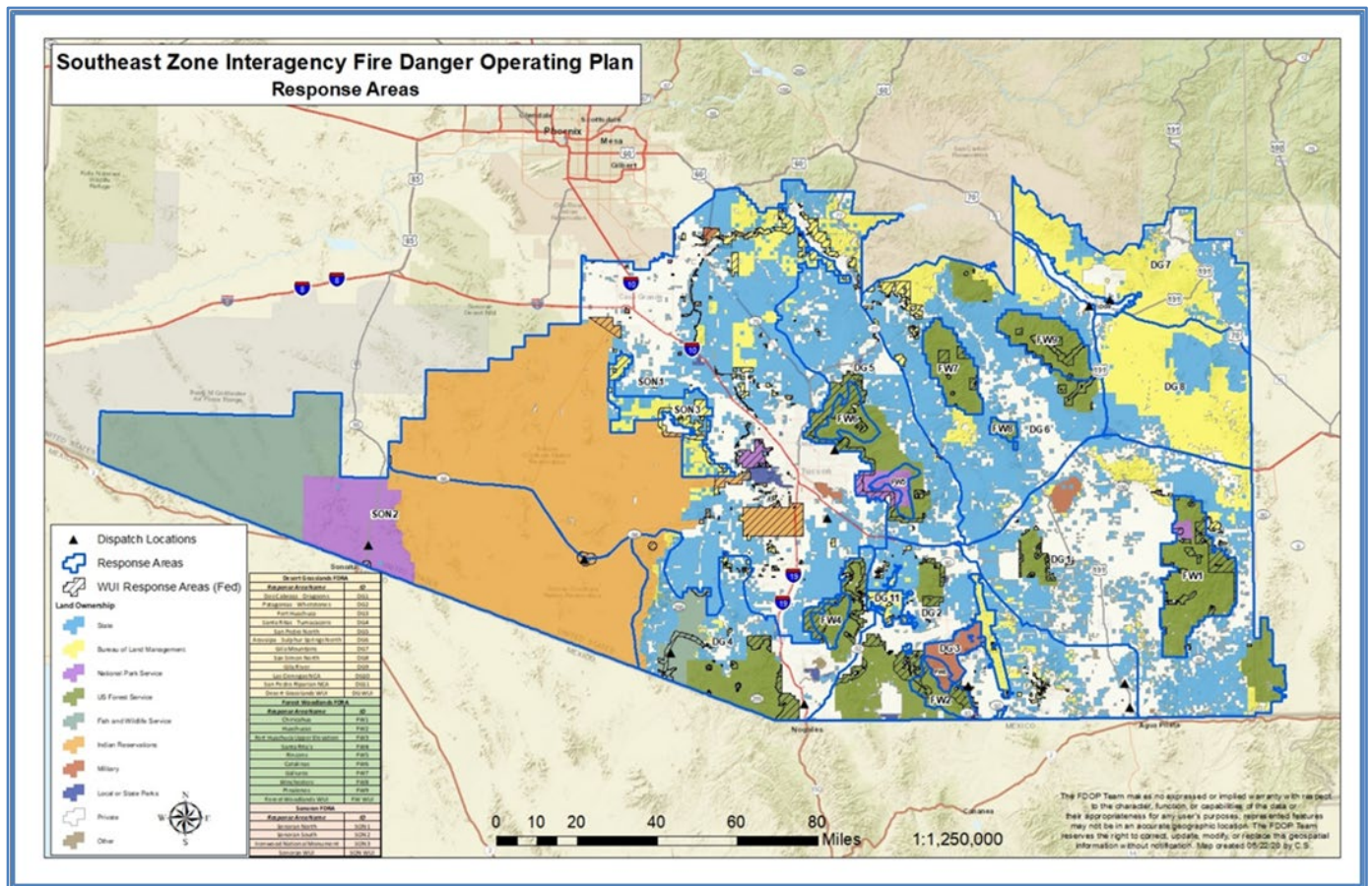
Procedures	<p>Dispatch closest forces based on current response level. See table below for number and type of resources to be dispatched.</p> <p>Suggested Closest Resources: <i>Will be determined by Tucson Dispatch Center</i> <i>Libby ATB: (Check daily for aircraft availability)</i></p>
Aviation	<p>For aircraft operations, Military Airspace must be de-conflicted with Tucson Interagency Dispatch (520-202-2710). Safford Ops Center (SEAT Base) (928-348-9120) If aviation resources ordered, send "Aircraft Ordered" text to Aircraft Group</p>
Notifications	<ul style="list-style-type: none"> <input type="checkbox"/> Text: New Smoke Report Send To: Fire Information Group <input type="checkbox"/> Upon jurisdictional determination, appropriate agency Duty Officer(s) based on land ownership <input type="checkbox"/> Neighboring Wildland Dispatch (near boundary)
Hazards	Known hazards: WUI related hazards
Notes	<u>Note:</u>

FDRA Sonoran	
Dispatch Level	Resources
Low	Dispatch to call Unit/District Duty Officer
Moderate	2 Resources, Air Attack
High	3 Resources , Crew, Air Attack, Helicopter

*Resource is considered an Engine, Module, or Squad

Appendix A

Response Zones Map



Appendix B

SOUTHEAST ZONE DISPATCH LOCATIONS

Dispatch Location Name	Agency	Resource Type(s) Available
Sierra Vista Airport Helibase	USFS	Type 1 Helicopter Type 2 Helicopter
Douglas RD	USFS	2 – Type 6 Engines
Libby Air Tanker Base	USFS	
Nogales RD	USFS	Type 3 Engine Type 6 Engine
Safford SEAT Base	BLM	2 - Single Engine Air Tankers (SEATs)
Safford BLM/USFS	BLM/USFS	2 – Type 6 Engines (BLM) Type 2 IA Crew (BLM) 2 – Type 6 Engines (USFS)
Santa Catalina RD	USFS	Type 3 Engine Type 6 Engine
Sierra Vista BLM/USFS	BLM/USFS	Type 3 Engine (BLM) Aravaipa IHC Type 3 Engine (USFS) 2 - Type 6 Engines (USFS) SMOD – 5 people (USFS)
Tucson Helibase	USFS	Type 3 Helicopter, Short-Haul qualified
NPS Fire Operations Center	NPS	Wildland Fire Module
NPS Organ Pipe Cactus NM	NPS	Type 7 Engine
Buenos Aires NWR	USFWS	Type 4 Engine Type 6 Engine
Sells	BIA/PPA	2 – Type 6 Engines