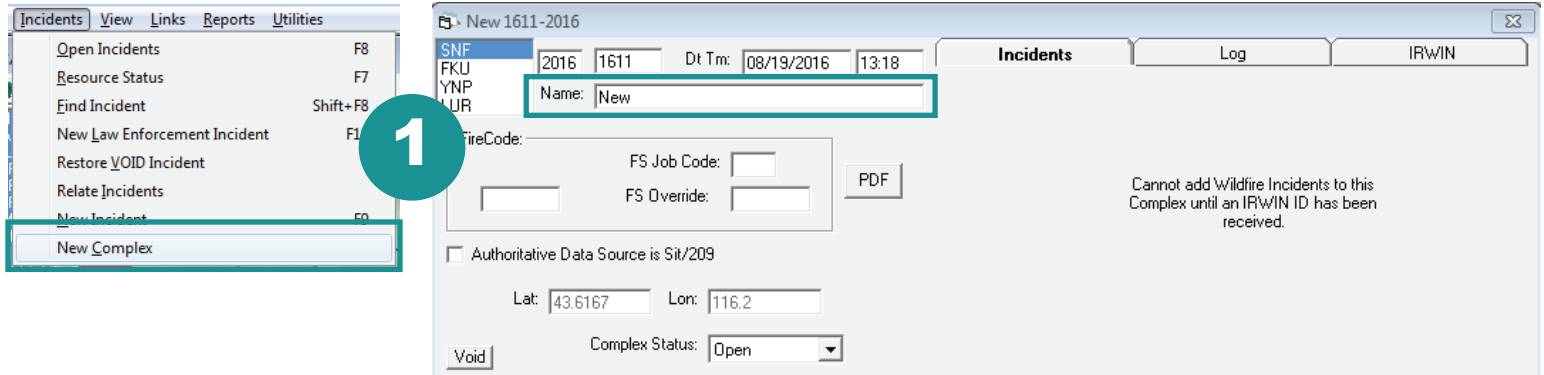


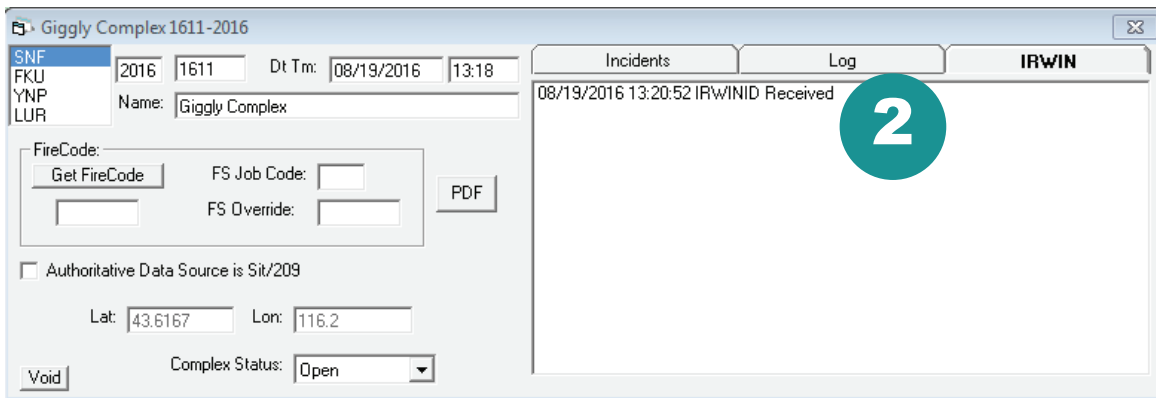
Incident Complexes

If, after all things have been considered, it is deemed an Incident Complex will be created, follow the steps below to ensure a smooth beginning to the data flow.

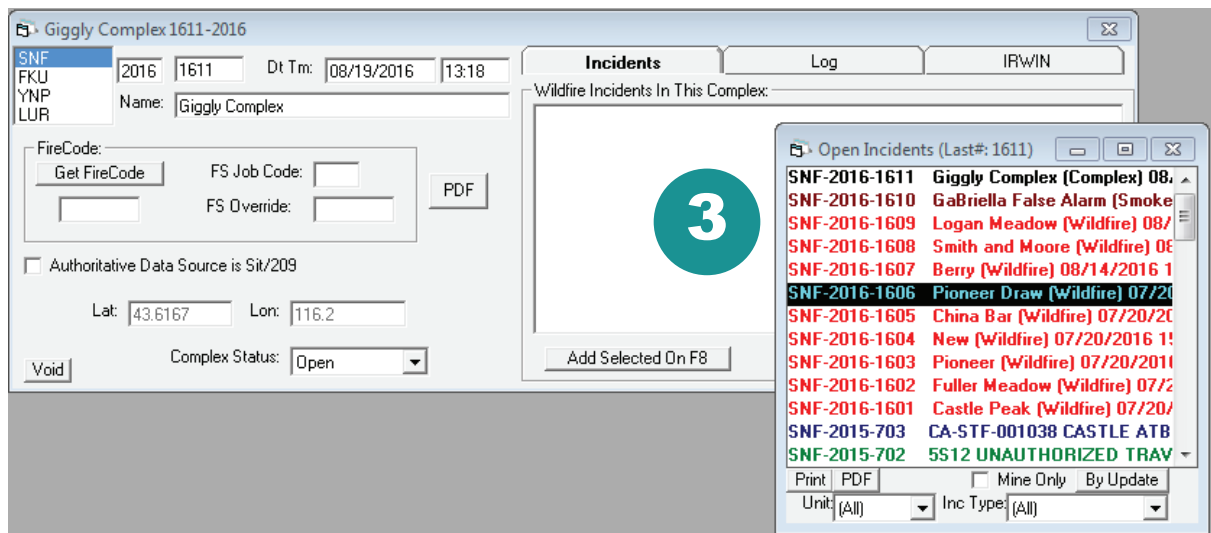
1. Create the Incident Complex parent record - it must have a name before moving forward.



2. Ensure an IrwinID has been received.

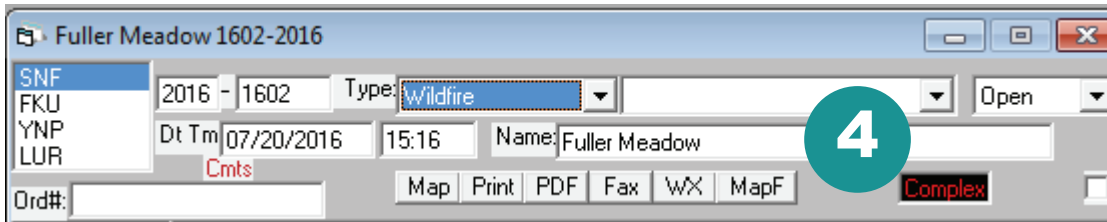


3. Add incidents to the Incident Complex, one at a time, from Open Incidents to the Incidents tabs in the complex record.

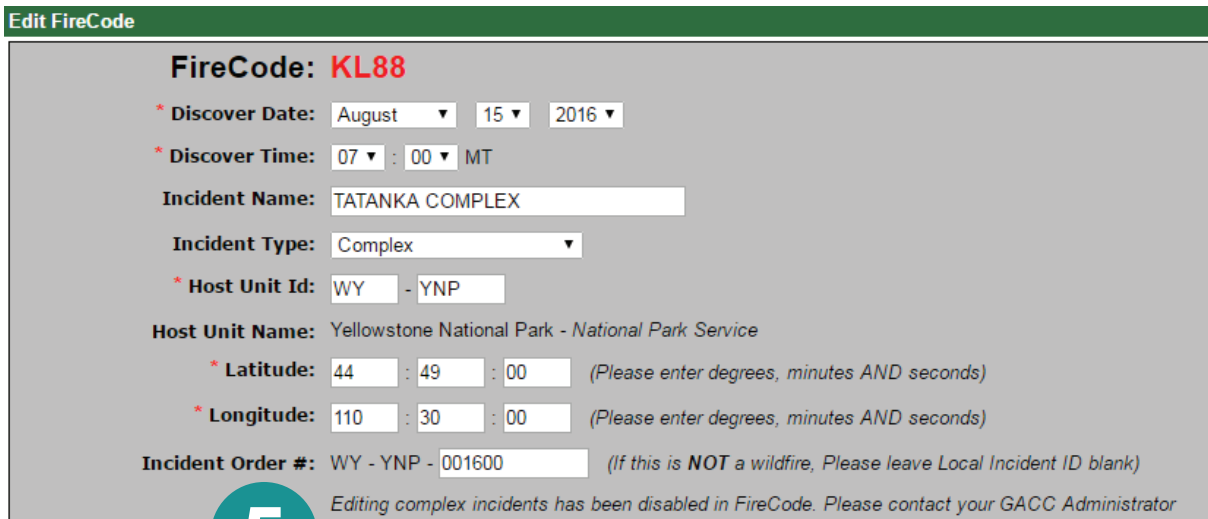


Incident Complexes continued

4. The color of the child incident will not change in the Incident window, but if you open the incident, it will denote that it is part of an Incident Complex in the bottom right corner of the header.



5. An Incident Complex cannot be edited in FireCode.



Rules of Complexing

1. Name must include the word "Complex".
2. Cannot be named after an existing wildland fire.
3. Must have at least two child records at time of creation.
4. Must be incident type CX (complex)
5. Cannot be a converted wildfire (incident type WF).
6. There is no limit to the number of wildfires attached to an Incident Complex.
7. Incidents may enter and leave the Incident Complex at any time.

Remember, the Incident Complex is simply the **container** for the incidents that comprise the complex.

Note: If an Incident Complex is Voided, the incident number cannot be reused.

Cannot add notes or comments for WildWeb on the Incident Complex, but it is possible to add notes and comments to the incident records comprising the complex.