

Geo-Referenced PDF Lighting Maps from EGP

May be done from iPad or computer

***** Note: You will need to have an EGP account *before* you can use this tool
(see step 1, next page) *****

2 minute video showing steps 1-10:

<https://drive.google.com/file/d/1y-bLwvo4LNYi4qNR8I3P4I5Grsumxyzq/view?usp=sharing>



1. Login to the Enterprise Geospatial Portal (EGP) home page:

<https://egp.nwcg.gov/egp/default.aspx>

*** Note: if you have not previously signed up, you will need to click the “Sign Up” button and follow prompts to get an account before you can login ***

2. After logging in you will be at the EGP Launchpad page. Click “**SituationAnalyst (SA)**” link from the Quick Launch box or scroll down and click “**Launch SA**”

**NATIONAL INTERAGENCY
FIRE ENTERPRISE GEOSPATIAL PORTAL**

rdmyers Change Password Logout

VIEWERS DATA HELP TIPS ABOUT CONTACT

QUICK LAUNCH

- [Fire Globe](#)
- [SituationAnalyst \(SA\)](#)
- [Fire EGP Data](#)

The Fire EGP provides standardized geospatial information for the full range of wildfire activities ranging from response to planning, and leverages a [central source of spatial data](#) for mapping, decision support, business intelligence, and situational awareness.

EGP GIS Specialist Training: Information on [GIS Specialist Training](#) in EGP is now available.

BLM Lightning Data: Can Export up to 10,000 Strikes. For information on how to view lightning data, [click here](#).

2018 National Incident Feature Service Workflows [Workflow How-to](#)

SYSTEM STATUS: Temporary Flight Restrictions (TFR's) are live and operational once again in the EGP. The data is also available for download from within the Situation Analyst.

Fire Globe

View Fire EGP content on top of publicly available imagery, terrain and base maps in 3D using the Fire Globe Web Client Viewer.

[Launch Fire Globe](#)

*** Note: if you have not previously checked the “Don’t show this screen in the future” box, you may choose to do so, then click “Launch SA” button once more ***

NATIONAL INTERAGENCY FIRE ENTERPRISE GEOSPATIAL PORTAL

Welcome to Situation Analyst (SA)

Situation Analyst (SA) is a geospatial wildfire decision support tool. It combines national, regional, and incident data with analytical tools to assist in directing and managing wildfire response activities.

HIDE	Hide Button: Select to hide or display the menu blade
	Briefing Tool: Displays overview of all active incidents, regionally and nationwide
	Layers: Turns map layers on/off, manage opacity and sublayers
	Edit: Add/update/delete information from map
	Tools: Select analytic tools to measure, list incidents, search for data, view streaming data from aircraft
	Legend: Launches legends window for data displayed on map
	Viewstates: Identify and change workspace, logout

Don't show this screen in the future. Autoredirecting in 51 seconds. [\[Remove Timer\]](#)

[Cancel](#) [EGP Help](#) [Submit a Comment](#) [Launch SA](#)

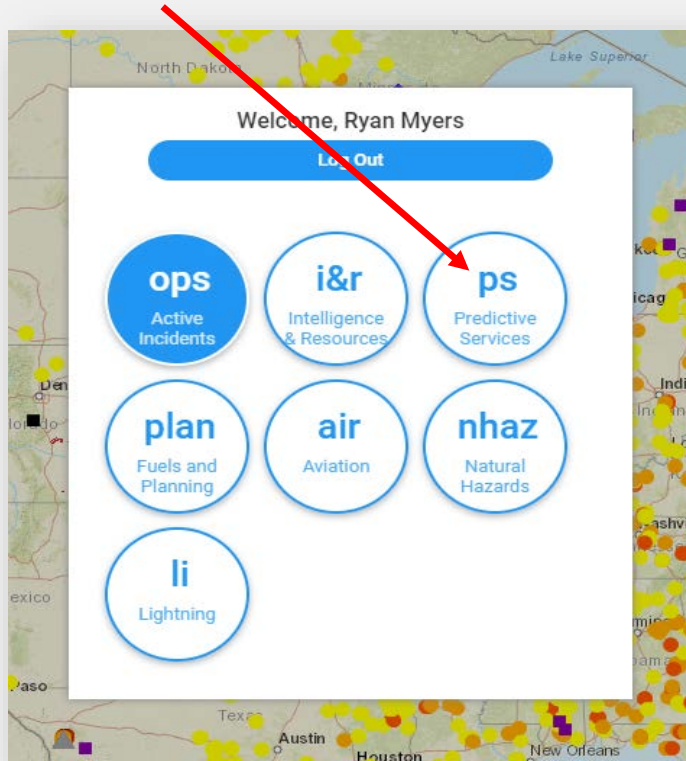
3. Once SA launches you will be viewing the Active Incidents map by default. To go to the Lightning Map, click on the “Ops” button on the menu at the left side of map:

Hide

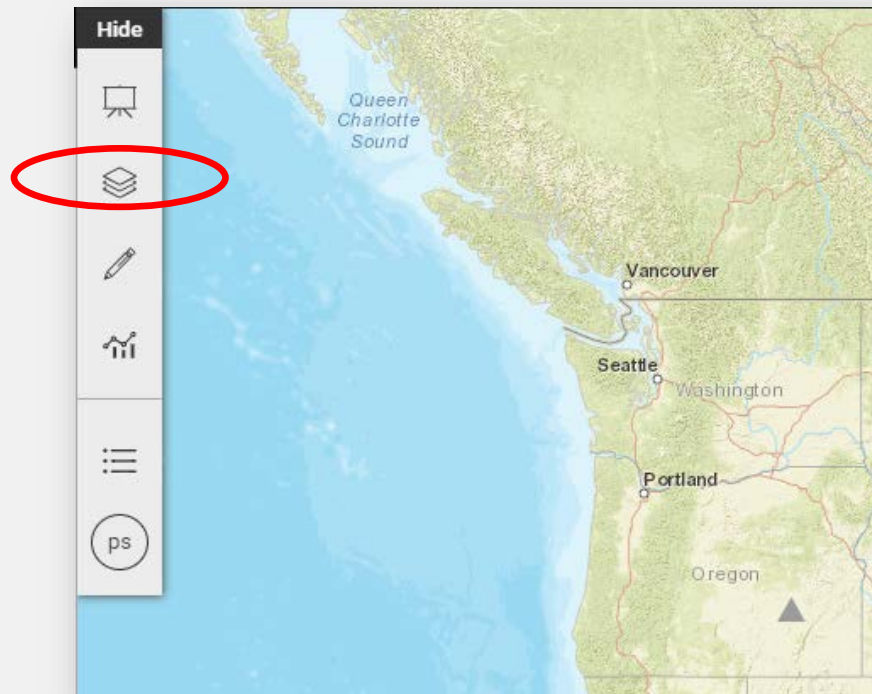
-
-
-
-
-
- ops**

The map displays a geographical area with numerous yellow dots representing active incidents. The 'ops' button is highlighted in the left-hand menu.

4. Click on “PS predictive services”

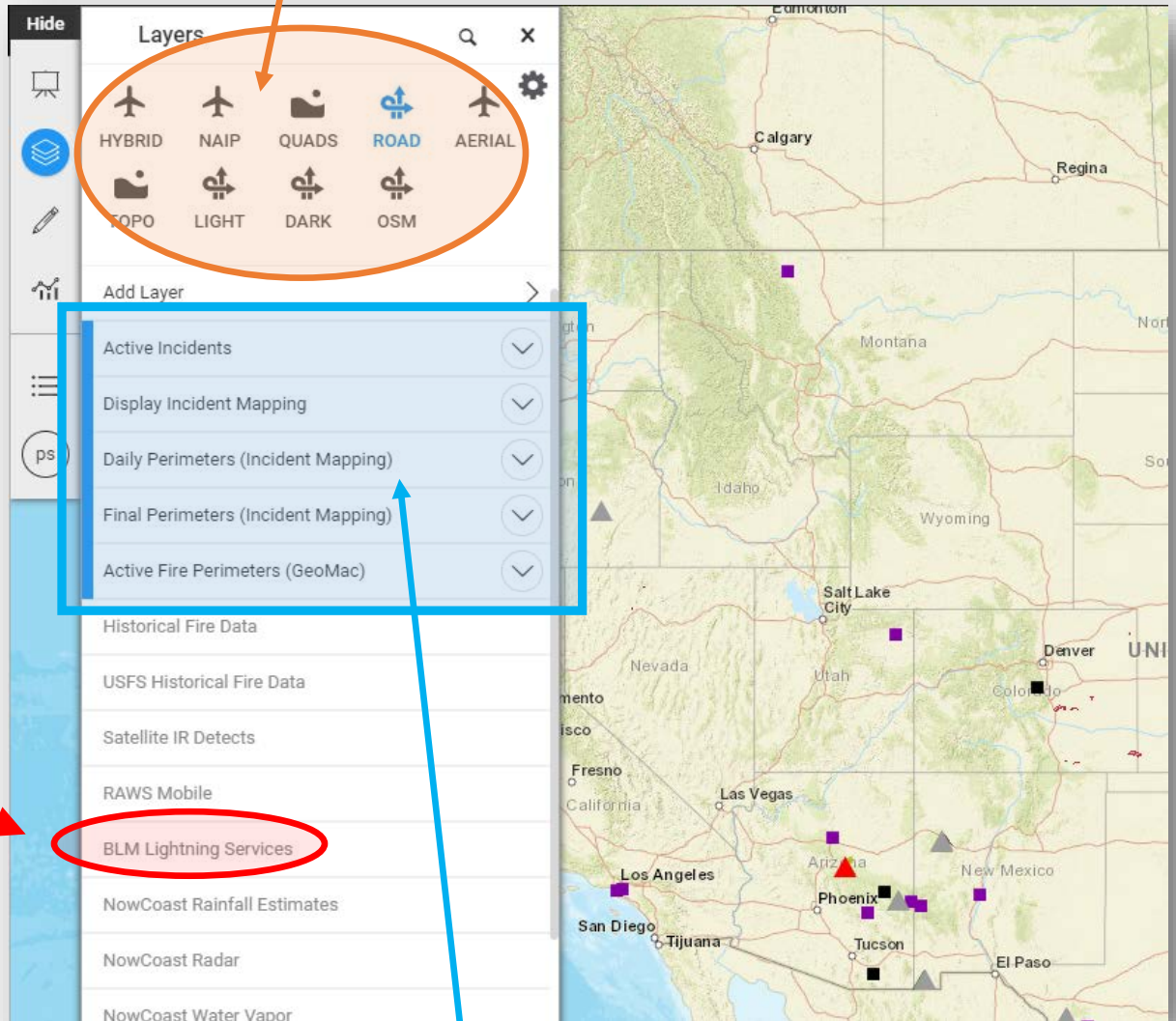


5. Click on the **map layers tool** from the menu at the left side of map:



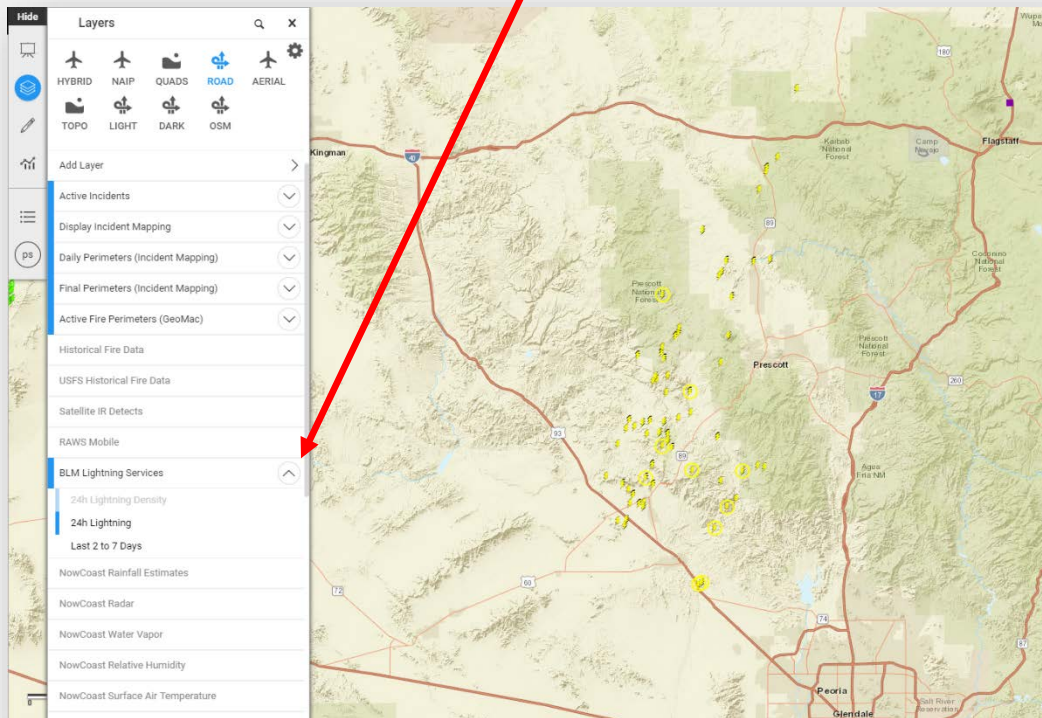
6. Click on **“BLM Lightning Services”** layer so that it is highlighted blue

Select your **preferred base layer** map (i.e. Road, Topo, Quads, etc.)

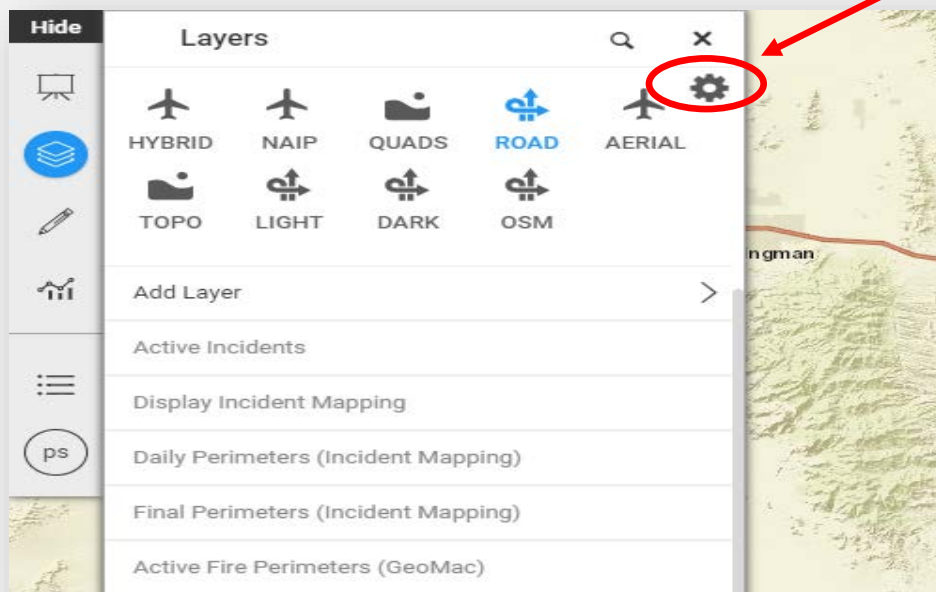


De-select any **other layers** highlighted blue

- The 24 hour lightning map will show by default. If you want to see or add the lightning from the past 2-7 days, click the **drop down arrow** to the right of “BLM Lightning Services” and select it.

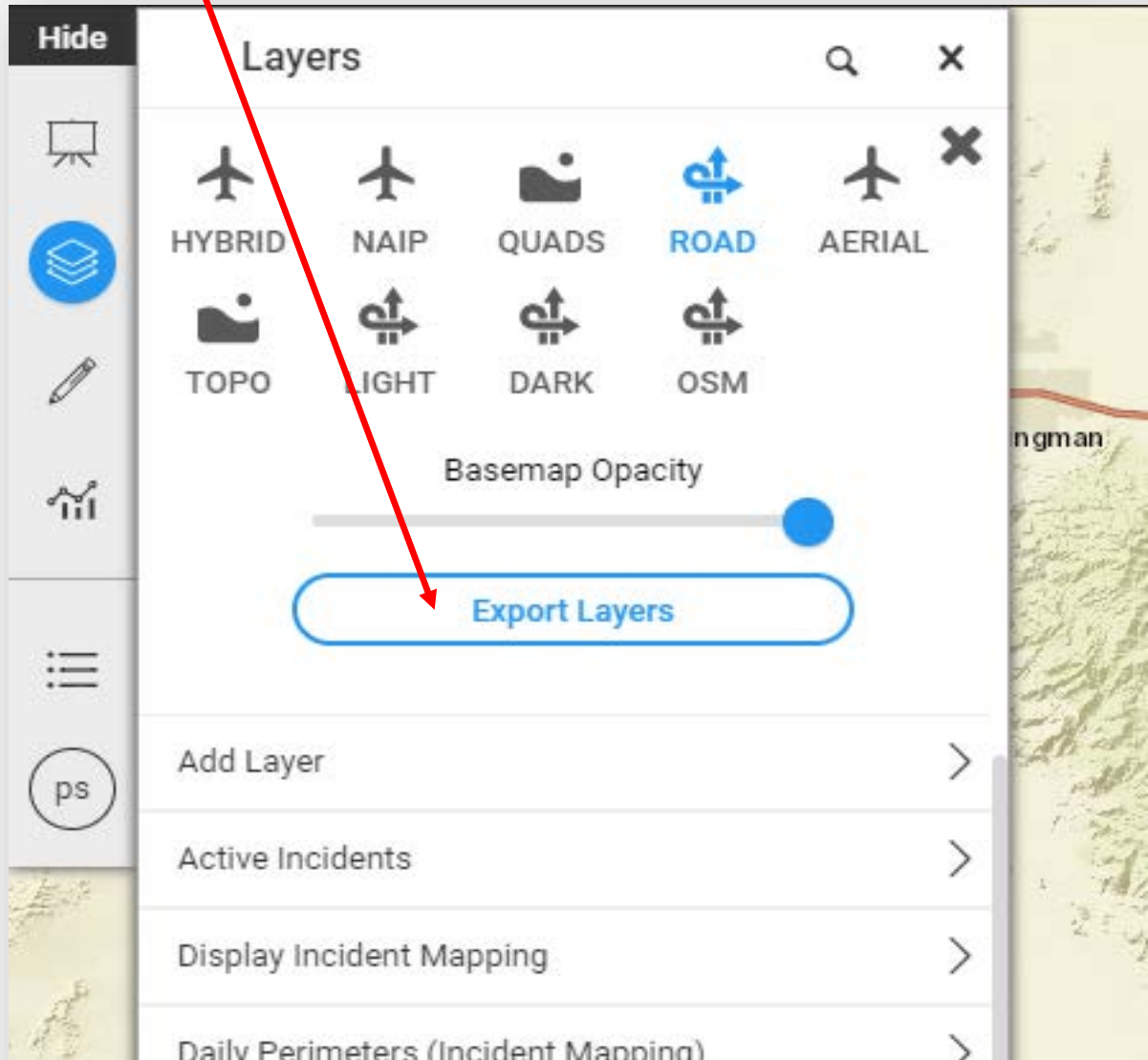


- Zoom in / out on the map to select the area to download, then click the **Gear Icon** at the upper right of the Layers menu



9. Click “Export Layers”

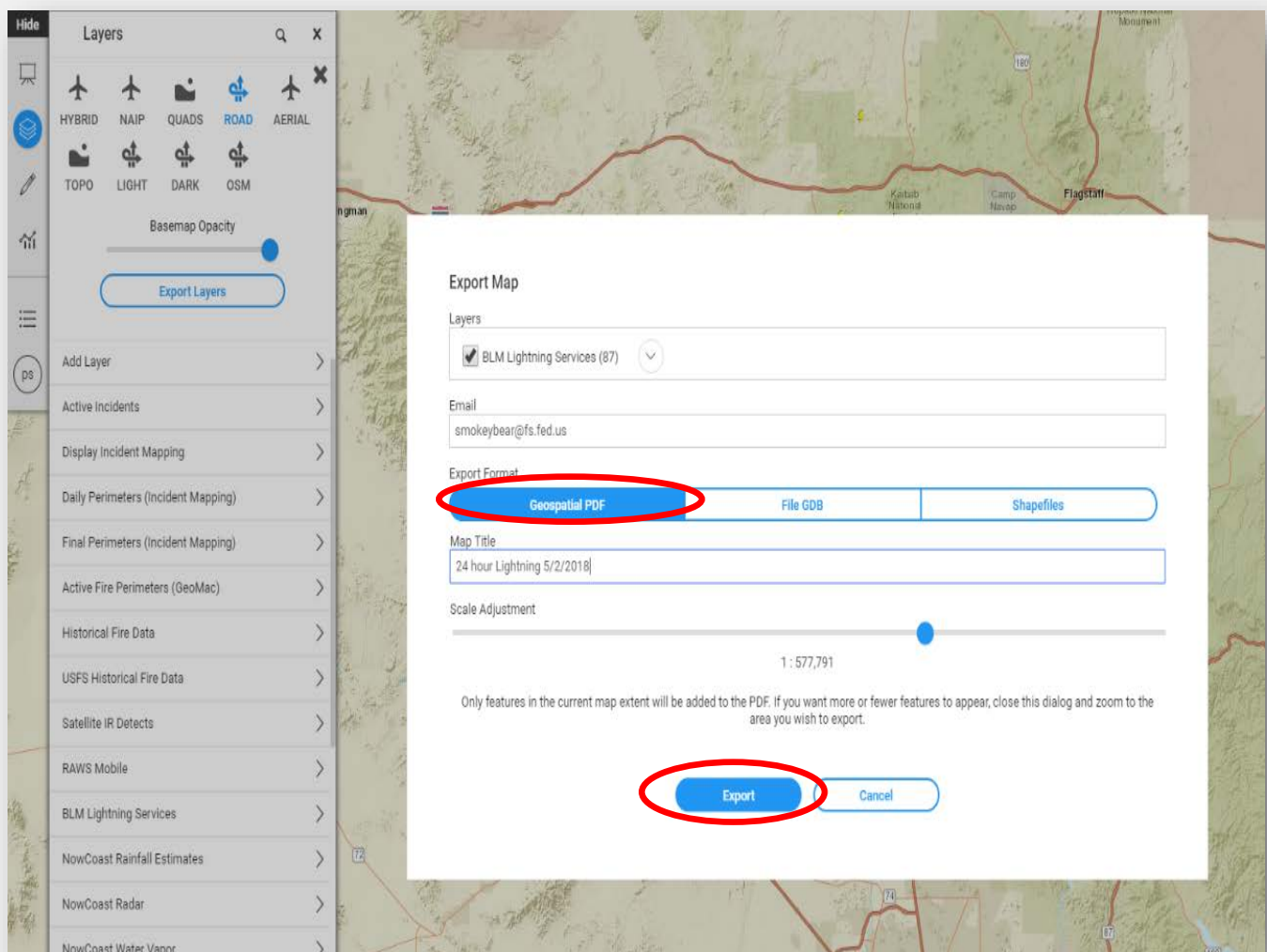
*** Note: the color of the lightning strikes is based on the amount of time since the strike and may be difficult to distinguish on the map (particularly yellow). You may adjust the **Basemap Opacity** before clicking “Export Layers” to make the strikes more visible, or you may try a different base layer (e.g. **DARK**)



10. Enter the email address where you would like the geo-referenced PDF to be sent (select an email that you can access with your iPad).

*** Note: you may enter multiple email addresses for multiple recipients ***

- Make sure **“Geospatial PDF”** is selected
- Title the map as appropriate
- Click **“Export”**



11. Within a few minutes you will receive an email containing a link to your map. Clicking the link will open the geo-referenced PDF map in your browser.

- On your computer, you may download, save, or share the map as you see fit.
- On your iPad, click the **send/share icon** at the upper right corner of your browser window, then select **“Copy to Avenza Maps”** or whichever app you prefer.

