

ANNUAL ACTION PLAN

Supplement to the Cooperative Fire Protection Agreement

by and between the

Louisiana Department of Agriculture and Forestry

and the

United States Department of Agriculture

Forest Service, Kisatchie National Forest

October 1, 2015 - September 30, 2016

**1. RECIPROCAL FIRE PROTECTION**

- a. Each agency arriving at an unstaffed wildfire within the areas agreed to at the Annual Cooperative meeting between the USFS and the LDAF will take prompt suppression action regardless of land-ownerships. These areas are included under the reciprocal portion of this agreement.
- b. The receiving party will not be required to reimburse the assisting party for its costs within the first 24-hour period following initial attack when a fire is controlled by the assisting party's initial attack force.
- c. Annually, the agencies will jointly review reciprocal actions taken to determine benefits accrued to each.

**2. COOPERATIVE FIRE PROTECTION**

- a. Each agency will furnish personnel and firefighting equipment to the other party upon request provided the fire danger and risks are such that personnel and equipment may be safely released. Personnel and equipment furnished by either agency to assist the other agency may be deployed wherever needed, irrespective of geographic boundaries.
- b. Payments for reimbursable services under this agreement shall be made semi-annually. Upon receipt of proper invoice, the first payment will be made by March 28, 2016 and the second payment will be made by September 27, 2016. Each agency will furnish the other agency with an itemized statement of reimbursable expenses incurred.

Reimbursements to the Forest Service shall be made payable to: **USDA FOREST SERVICE** and mailed to:

USDA Forest Service  
c/o Citibank  
P.O. Box 301550  
Los Angeles, CA 90030-1550

Reimbursements to the State shall be made payable to **LOUISIANA OFFICE OF FORESTRY** and mailed to:

DEPARTMENT OF AGRICULTURE AND FORESTRY  
OFFICE OF FORESTRY  
5825 Florida Blvd., Suite 6000  
BATON ROUGE, LA 70806

- c. Cost for personnel and equipment available to each party under the reimbursable arrangement will be the actual cost to the sending agency for work time from time of departure until return to official station.

Louisiana Office of Forestry may opt to detail their personnel as State employees or under the pay plan for Emergency Firefighters (AD Pay Plan). If the LDAF elects to detail their personnel as State employees, their salary and cost will be computed as covered in the South Central Forest Fire Compact.

If LDAF employees are assigned under the Emergency Firefighters AD Pay Plan, they are compensated under the current AD Pay Plan in the Interagency Fire Business Management Handbook at the time of hire.

Overhead costs shall be billed by the sending agency at the overhead rate current at the time of the incident action.

Meal times will not be considered compensable, unless incurred on the fire line before the fire is declared controlled. After the fire is controlled, a meal period of at least 30 minutes must be taken for each 6 hours of duty. On non-fire incidents, the decision to allow meal compensation will depend on the remoteness of the location and whether the employees can be released from duty for a meal period.

Time spent packing in preparation for a detail or unpacking at the conclusion of a detail is not considered compensable time.

Compensable time will begin at departure from official station and end upon return to official station.

Travel time from employee's official station to a staging area within the state of Louisiana is compensable only for the direct travel route. Return travel from a staging area or incident location to employee's official station will be by the most direct route. Deviations from the most direct and reasonable route are not considered compensable.

- d. Organized crews and overhead dispatched to fires out of state will be sent as state employees and will be paid according to Section 2.c. of this Action Plan.
- e. The Forest Service will furnish protective clothing (fire pants and shirts), fire shelters, fire packs, hardhats, and other required safety items to organized crews and overhead needed to suppress fires on the Kisatchie National Forest or other details in or out of the region. Boots will not be furnished and will be the responsibility of the individual.
- f. Organized crews dispatched to fires out of the state will be subject to a 14-day stay limit, **not including travel time** to and from the incident. The 14-day stay limit is negotiable and may be extended to 21 days or more at the discretion of the State Forester on a case-by-case basis. State crew bosses will call State Fire Chief from the incident through the Interagency Area Resource Representative (IARR) and negotiate this extension.
- g. Members of organized crews and overhead will have regular commissary privileges when assigned to an incident in or out of the Region. Commissary purchases will be recorded on the Emergency Firefighter Time Report (Optional Form 288) and deducted from the employees wages prior to presenting the bill for reimbursable costs to the Forest Service.

h. **SUPPLEMENTAL FIRE DEPARTMENT RESOURCES**

As directed by the WO letter dated March 4, 2009, reimbursements to local fire departments for expenses of supplemental fire department resources on Federal Incidents has been addressed. At this time LDAF has no plan to sponsor any supplemental fire department resources. The KNF will support them in this decision.

3. **OFFSET FIRE PROTECTION**

There are no offset fire protection services available to either party under this agreement.

4. **ORGANIZATION**

The fire protection organization, location of standby crews and fire equipment for the Forest Service is shown in **EXHIBIT A**.

The fire protection organization, location of standby crews and fire equipment for the State Office of Forestry is shown in **EXHIBIT B**.

Any time there is a significant change made in the organizations of either agency, the agency making the change will notify the other agency in writing and an amendment to this document will be made.

All equipment listed in **EXHIBITS A and B** are available for cooperative use subject to each party's regulations and procedures.

5. **OTHER ACTIVITIES**

a. **Procedures for "Unified Command" Incidents between LDAF and USDA Forest Service Wildland Firefighting Personnel**

1. The most qualified individual arriving first on the Incident will act as the Incident Commander (IC) until relieved by an Incident Commander of the Jurisdictional Agency.
2. Outside of the Mutual Aid Zone or Mutual Aid period, on non-UFSF Lands, LDAF will supply the Incident Commander or a "Delegation of Authority" to the Acting IC.
3. If available, an IC without concurrent duties, from the Jurisdictional Agency will assume the IC position. The assigned IC should be qualified at a level commensurate with the fire's complexity.
4. The transfer of command must be stated verbally between the current IC and the individual accepting the position. All resources will be notified immediately of the transfer of authority either by radio or direct verbal notification, including Dispatch.

5. When two or more agencies assist on the same Incident, a “Unified Command” may be established. If the assigned initial attack IC has other roles (such as Dozer Operator), or if the complexity of the Incident escalates, a Unified Command will be established.
6. The most qualified Incident Commander from each agency or cooperator will agree to and establish the command organization.
7. All resources will be notified to the establishment of a “Unified Command” and the names of the Unified Command ICs.
8. Unified Command decisions will be agreed to by the Unified Command ICs before implementation. For “split” decisions, final authority will rest with the Jurisdictional Agency IC or the IC granted “Delegation of Authority”.
9. Each Unified Command IC will be responsible for the safety, well-being, and condition of the personnel and equipment from their respective agency. Each agency’s resources will be assigned to one flank, division, or other geographical location under the command of their respective Unified Command IC, whereas possible.

**b. Request(s) for Additional Resources:**

1. All USFS requests for additional “in-state” resources will be forwarded to the Louisiana Interagency Coordination Center for processing.
2. On LDAF jurisdictional fires, requests for additional LDAF resources will be ordered by the LDAF State Forester, District Foresters, or their Acting IC.
3. LA-LAS request for resources will be made through either:
  - 1) LICC – for federal resources or “out-of-state” resources.
  - 2) LA-LAS – for agency resources

Aviation Resource requests, for LDAF jurisdictional fires can **ONLY BE APPROVED** by the following individuals:

State Forester  
Associated State Forester  
Fire Protection Chief  
Fire Program Director  
Regional Forester

**c. Detection**

Cooperative detection services will be provided by the Office of Forestry for all five Ranger Districts of the Kisatchie National Forest using the same detection network that is used to provide statewide protection. These detection services are reimbursable annually under the Cooperative Agreement and the terms outlined here and in Sections 2 and

**5.h. of this action plan.** All detection flight Pilots will contact the Pineville Dispatch Office using the normal Flight Following Frequency (168.6500) to notify the FS when LDAF detection planes are on detection flight missions. When a fire is detected on National Forest land within that district, the Pilot will immediately notify Pineville Dispatch on Frequency 168.6500.

**d. Reporting Fires**

As a general rule, each agency will report the location of fires observed on areas protected by the other agency through their respective District Offices. The procedures for reporting fires are defined as follows:

**State Districts:**

Once a fire is detected, the state District Dispatcher will determine if the fire is located on National Forest land. If so, the Dispatcher will report the fire location to Pineville Dispatch (318-473-7152). If the Pineville Dispatch is not staffed, the Dispatcher will call the Forest Service dispatcher (1-318-613-7271) and report the fire location.

If a fire is discovered on National Forest land by aerial detection, it will be reported to Pineville Dispatch (318-473-7152) for further action.

If a fire is detected outside of normal duty hours (evenings and weekends), the State Dispatcher will call Pineville Dispatch at 1-318-473-7152 to report the fire. If no one is available by phone, the State dispatcher will call the Forest Service dispatcher at 1-318-613-7271. This procedure applies to all districts.

**Forest Service:**

Fires on private lands located by, or reported to the Forest Service by third parties will be reported to the appropriate State District Office or State Tower.

The Forest Service will provide additional detection during periods of extreme or extraordinary fire danger by initiating ground patrols and supplemental aerial detection.

**e. Prevention**

Annually, prior to the Annual Louisiana Interagency Cooperator's Meeting, Fire Staff Members will meet with and discuss their planned fire prevention activities for the coming fiscal year (Fairs, festivals, and school visits should be included in the planned events for each year.

Special Fire Prevention teams activated in hot spot areas will be coordinated between the Office of Forestry and the Forest Service and made a joint effort whenever possible. The teams will work jointly to reduce the incidence of wildfire throughout the state. Agencies will cooperate in investigations and law enforcement. In times of extreme fire danger affecting those areas in and around national forest lands, the Office of Forestry and the Forest Service may jointly create public service announcements and media releases.

Each agency will cooperate closely in investigations and law enforcement activities.

**f. Training**

The Office of Forestry and Forest Service will coordinate annual fire training and will work together on joint training sessions whenever possible. Both agencies will provide instructor cadre for joint training exercises. Notice will be given to the other agency in advance of scheduled training sessions.

**g. Closure Orders/Burn Restrictions**

The Forest Service will cooperate with the State Forester when open burning restrictions are imposed in the state by either the State Fire Marshall's Office or the Governor's Office. Normally, the Forest Supervisor will suspend all prescribed fire activity simultaneously with the imposition of any burn ban or open burning restrictions by the State Fire Marshall or Governor.

Recommendations for closure of forest lands in Louisiana during periods of extreme fire hazard may be made by the State Forester to the Forest Service.

Each agency is responsible for implementing burn restrictions or closure orders for lands under their jurisdiction.

**h. Communications**

- (1) Each agency will provide, install and maintain radio communications, necessary equipment and/or frequencies at the other agency's locations and will abide by applicable Federal and State laws and regulations governing radio communications.
- (2) The equipment shall be and remain the property of the agency that purchased it, but the Kisatchie National Forest shall be the licensee thereof pursuant to the FCC and IRAC regulations.
- (3) Both agencies are authorized to operate radio equipment for test purposes, maintenance and reliability checks and operational use.
- (4) Both agencies agree to operate and maintain radio equipment in accordance with FCC and IRAC regulations and operational parameters as established by the Forest Service (including the use of Clear Text radio language).

Cooperative radio communications will be established at the following locations:

- (a) Sunset Tower (Administered by Rapides 911 Comm Center)
- (b) Gorum Tower
- (c) Pitkin Tower

- (d) LA Interagency Coordination Center (Pineville Dispatch)
- (e) Natchitoches State Office
- (f) Olla State District Office

Both agencies agree to allow the other agency to operate on the frequencies provided in **EXHIBIT H**. The purposes of the various frequencies are identified within.

**i. Reimbursable Services**

- (1) **Detection** - The State will provide complete detection coverage for all five ranger districts on the Kisatchie National Forest for the sum of \$48,000, payable in two equal payments of \$24,000 each, due by March 31, 2016 and September 30, 2016 respectively. These payments are contingent upon receipt of an invoice, or other official billing document from the State Office of Forestry prior to the due dates above.
- (2) **Reimbursable Fires (Including Off-Forest Details)** - Following each reimbursable fire, the sending agency shall, within ten days following the end of the month in which the fire occurs, furnish the receiving agency with an itemized statement showing the following:
  - (a) Name and title of person requesting assistance.
  - (b) Name and title of person accepting request.
  - (c) The date and location of fire.
  - (d) Type of truck or transportation furnished, number of miles traveled, rate per mile, and total cost.
  - (e) Type of tractor, plow, aircraft, or other equipment furnished, hours operated, rate, and total cost.
  - (f) Copies of Individual Fire Time sheets showing name of personnel dispatched to fire, hours worked, rate of pay, and total pay.
  - (g) Charges for any per diem and/or overhead.
  - (h) Copy of state fire report if applicable.

**EXHIBIT E** lists the current equipment rental rates for each agency.

- (3) Salary, travel and wage costs of personnel assigned to fire suppression shall be the **actual cost** of the sending agency.

**(4) Mobile Fire Cache Van**

The Interagency Mobile Fire Cache Van (#5) has been relocated to Texas at the direction of the Southern Area Interagency Cache Committee. The van is still available for use by the State when ordered through Pineville Dispatch.

The State agrees to reimburse the Forest Service for any tools or supplies used from the cache van when dispatched to State of Louisiana fires. Tools will be refurbished to



Interagency Standards and/or replaced. Non-reusable supplies will be reimbursed at cost to Forest Service or replaced in kind.

**j. Billing for Suppression Costs**

- (1) **Direct Threat Situation** - In direct threat situations when the Forest Service takes action on fires on private lands to prevent the fires from spreading onto National Forest lands, the Forest Service will bill the person(s) responsible for the fire to recover suppression costs and damages, if any. The fire does not have to spread onto National Forest land for a billing to be made.
- (2) **Requests for Air Tanker Drops** - All requests for Forest Service air tanker drops on forest fires on privately owned lands will be made to Pineville Dispatch through the State Forester or his designated representative as described under **Section 5.b.(3)**, of this plan.

The Forest Service will bill the State by separate billings for the costs of these air drops and forward copies of the billings to the private landowners to make direct payments to the Forest Service on the basis of the copy of the Forest Service billing forwarded to them, or in the absence of such arrangements, the State will pay the Forest Service in accordance with **Section 5.i.(2.) (Reimbursable Services) and Section 5.k. of this Action Plan.**

The above procedures will be used for all requests for private land suppression actions on fires not a direct threat to National Forest Service land (and outside of the Reciprocal Fire Protection Area, or beyond the first 24-hour period) where the person(s) responsible for the fire is/are known.

- k. Maps and Directories.** Maps and directories will be reviewed annually by both agencies and updated as necessary. New directories of firefighting personnel will be furnished each agency by the other agency whenever revisions are made and will not be included in this plan.

**l. Suppression and Firefighting Personnel.**

The Forest Supervisor, District Rangers, or their acting, are authorized to request the State Office of Forestry to assist with or to assume suppression action on a Forest Service fire on a **reimbursable basis.**

The State Forester, Associated State Forester, Fire Protection Chief, Fire Program Director, Regional Forester, or their acting are authorized to request the Forest Service to assist with or to assume suppression action on a State fire on a **reimbursable basis.**

In case of joint suppression action, either agency, when billing the individual who caused the fire, will inform him that he may be billed by the other agency as described in **Section 5.k1, 2.** of this plan.

m. **Fire Reports**

**Section IV.1** of the **Cooperative Agreement** outlines the reporting procedure for both agencies. Copies of each agency's report forms are found in **EXHIBIT F**.

n. **Overhead Rates**

(1) **OVERHEAD RATES - USFS**

Forest Service will use the current rate assessed for Indirect Costs for overhead. This rate is set at the beginning of each fiscal year and can be obtained on request from the Forest Supervisor.

(2) **OVERHEAD RATES - STATE**

The State will use the current indirect cost rate negotiated under the provision of Federal Management Circular (FSM) 74-4. A copy can be obtained on request to the State Forester.

o. **Mopup Standards.**

(1) **MOP-UP STANDARDS - USFS**

The following are guidelines for mop-up on the Kisatchie National Forest. They can and should be modified by the Incident Commander when necessary:

**STAFFING CLASS PRESENT OR PREDICTED**

B	C	D	E
-----Blackout Distance in Feet-----			
20	30	70	100

Fell burning snags that do or can endanger containment of fire.

Remove burning material from base of desired trees. Smoke dissipation standards and probability of fog formation shall be considered when determination of mop-up standards is made.

(2) MOP-UP STANDARDS - STATE

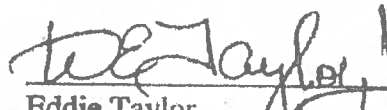
There are no set standards for mop-up. The State will not engage in mop-up of National Forest Lands unless on a reimbursable basis. The National Forest will mop-up private lands only to the extent requested by the State Forester and also on a reimbursable basis.

IN WITNESS WHEREOF, the Agencies hereto have executed this modification and FY16 Annual Action Plan as of the last date written below:

LOUISIANA DEPARTMENT OF AGRICULTURE  
OFFICE OF FORESTRY

  
WADE DUBEA  
State Forester  
12/9/15  
Date

U.S. FOREST SERVICE, KISATCHIE NF

  
Eddie Taylor  
Forest Supervisor  
12/7/2015  
Date

The authority and format of this instrument have been reviewed and approved for signature.

  
Robin Stidham  
U.S. Forest Service Grants & Agreements Specialist  
12/7/2015  
Date

**EXHIBITS**

- A. Organization, Location of Crews and Equipment - USFS
- B. Organization, Location of Crews and Equipment - State
- C. Call List (Kisatchie National Forest)
- D. Call List (Louisiana Office of Forestry)
- E. Equipment Costs - USFS & State/ LDAF Equipment Standby Locations List
- F. Fire Report Forms - USFS & State
- G. Training Schedules - USFS & State
- H. Radio Frequency List
- I. Maps Showing Aerial Detection Routes
- J. Maps Showing Reciprocal Fire Protection Areas
- K. Map of Louisiana Office of Forestry Districts
- L. Aerial Detection
- M. LDAF SOPs on USFS Jurisdictional Lands

**EXHIBIT A**

1. **ORGANIZATION:**

Kisatchie National Forest  
Expanded Fire Protection Organization

FOREST SUPERVISOR

Eddie Taylor

TEAM LEADER

Ed Bratcher

FIRE MANAGEMENT OFFICER

James Flue

COORDINATION CENTER	SAFETY	MILITARY LIAISON	FINANCE/ PROCUREMENT	LOGISTICS GRND SUPP	FIO
Fred Mascher	Ralph Revello	Doug Rhodes	Debbie Collins/ Donna Oliveria	Fred Cook	Jim Caldwell

- D-1 Catahoula R.D./Brian Gidcumb, DFMO
- D-2 Calcasieu R.D./ Russ Marchion,DFMO
- D-3 Kisatchie R.D./Steven Staples,DFMO
- D-4 Winn R.D./Larry Kile, Zone FMO
- D-6 Caney R.D./Jeff Bass

2. **LOCATION OF STANDBY CREWS** – KISATCHIE NATIONAL FOREST

Forest Service standby crews will be assigned as needed according to fire danger and risk(s) levels. Normally, a core standby crew will be assigned when the preparedness level reaches 3+ at Ranger District Work Centers. This may not be the case, however, depending upon the overall situation and how much "calculated risk" the District Ranger wants to take.

The Forest Service maintains permanently assigned "fire crews". Most fire suppression will be provided by these crews. A 3-person tractor plow crew will normally make up the standby crew. More personnel/militia and equipment will be added as fire danger, risk(s), and/or occurrence increases.

3. **FIRE EQUIPMENT AND ITS LOCATION** – KISATCHIE NATIONAL FOREST

Ranger District	Equipment Location	Number and Description of Equipment
Catahoula	Catahoula Work Center (3 miles east of Bentley, LA @ the Stuart Seed Orchard)	2 - Type 5 Dozer/Plow 1 - Type 6 Engine
Calcasieu (Evangeline Unit)	Evangeline Work Center Highway 488 - 13 miles west of Alexandria	1 - Type 5 Dozer/Plow 1 - Type 6 Engine
Kisatchie	Kisatchie Work Center Highway 117 & FS Road 337	1 - Type 5 Dozer/Plow 1 - Type 6 Engine
Winn	Winn Work Center Highway 84 @ Gum Springs	2 - Type 5 Tractor/Plow 1 - Type 6 Engine
Calcasieu (Vernon Unit)	Fort Polk	2 - Type 5 Tractor/Plow 1 - Type 6 Engine
Caney	Caney Work Center, Homer, LA	

(PAGE LEFT BLANK)

EXHIBIT B-1

10/08/2015

ORGANIZATION - Louisiana Office of Forestry (LA-LAS)

STATE FORESTER

Wade Dubea

Asst. State Forester

Epney Brasher

BRANCH CHIEF

Donald Smith

REGIONAL FORESTERS

NORTH: Dena Ginn

SOUTH: Kirk Casanova

Enforcement Chief: Roy St. Pierre

Command Pilot: Jeremy Coffee

Fire Program Director: Bret Lane

Forest Management Program Director: David Campbell

GIS and Forest Health Program Director: Brent Cutrer

CONTACT INFORMATION

LDAF - Forestry HQ

225-925-4500

Regional Forester Ginn

318-949-3225

Regional Forester Casanova

985-543-4057

Enforcement Chief St. Pierre

225-925-4500 or 985-543-4057

(Page Left Blank)



LOUISIANA - OFFICE OF FORESTRY  
EQUIPMENT AND PERSONNEL LOCATIONS  
UPDATED: 09/11/2014

DISTRICT	PARISH	STANDBY NAME	FIREFIGHTERS	TRACTOR/PLOW UNITS		PUMPER TRUCKS	
				TYPE 4	TYPE 2	TYPE 6	TYPE 5
1	BIENVILLE	RINGOLD	3	2			
	BOSSIER	HAUGHTON	2	1			
	CADDO	LONGWOOD	1	2			
	CLAIBORNE	HOMER	3	4		1	
	JACKSON	CHATHAM	2	2			
	LINCOLN	RUSTON	1	1			
	UNION	FARMERVILLE	1	1			
	WEBSTER	MINDEN	4	4	1	1	1
TOTALS			17	17	1	2	1

**(PAGE LEFT BLANK)**

**EXHIBIT C**

**CALL LIST FOR REPORTING FOREST FIRES TO U.S. FOREST SERVICE**  
**(All area codes 318 unless otherwise noted)**

	<b>CELL</b>	<b>OFFICE</b>	<b>HOME</b>
<b>Supervisor's Office - Pineville</b>		<b>473-7160</b>	
Fred Mascher	828-777-2075	473-7152	
<b>Caney Ranger District - Homer</b>		<b>927-2061</b>	
Rondall Hudson		927-2061	
Jeff Bass		927-2061	
<b>Catahoula Ranger District - Pollock</b>		<b>765-3554</b>	
(Vacant)			
Brian Gidcumb	(217) 494-0348	<b>765-3554</b>	
<b>Calcasieu Ranger District - Boyce</b>			
<b>Evangeline Unit</b>		<b>793-9427</b>	
Lisa Lewis	337-789-3830		337-392-9419
Russ Marchion	318-729-3322	<b>793-9427</b>	
<b>Vernon Unit</b>		<b>531-8745</b>	
Russ Marchion	337-729-3322 (Cell)		
<b>Kisatchie Ranger District - Provencal</b>		<b>472-1840</b>	
Mike Dawson			
Steven Staples	623-1159		
<b>Winn Ranger District - Winnfield</b>		<b>628-4664</b>	
Greg Cohrs			613-6161
Larry Kile	446-6103		628-7319
Dustin Dill	794-5047		

**EXHIBIT D**

EXHIBIT D

2015 WILDFIRE SUPPRESSION CALL-OUT LIST				
LA. DEPT. OF AGRICULTURE AND FORESTRY, OFFICE OF FORESTRY				
** District HQ's are manned 7 days per week, from 8:00 - 17:00. If no contact is made, please utilize the after-hour contact numbers				
LDAF Emergency Contact Hotline (24 hrs) 1-855-452-5323				
LOCATION	CONTACT NAME	POSITION	DAYTIME CONTACT #	AFTER HOURS CONTACT #
<b>DISTRICT 1</b> Natchitoches HQ	Don Smith Drew Latta Jeremy Collins Ron Bl. Pierre	Fire Protection Chief Fire Program Director Assistant Forest Mgr Enforcement	W: 225-625-4500 W: 225-625-4500 W: 225-625-4500 W: 225-625-4500	C: 310-313-0009 C: 225-638-7735 C: 225-638-7735 C: 225-415-2321
Chibarra, Union, Webster Bismelle, Jackson, Lincoln Bossier, Cadeo All Parishes listed	Dora Ginn Jeff Andrew Justin Whittington Jim Baldwin	Regional Forester Parish Forester Parish Forester Enforcement	W: 318-949-3225 W: 318-649-3225 W: 318-311-3007 W: 318-655-8300 W: 318-649-3225	H: 310-309-5437 / B: 220-623-0823 H: 318-318-0300 / B: 225-703-8121 H: 310-747-4588 / B: 225-322-8049 C: 318-548-7385
<b>DISTRICT 2</b> Monroe HQ	Dora Ginn Winston Gable Trent Tuma Richard Dunn Shirley Dwyer	Regional Forester Parish Forester Parish Forester Fire Crew Specialist Enforcement	W: 318-345-7525 W: 318-649-3225 W: 318-343-7505 W: 318-652-1400 W: 318-345-7525 W: 318-649-3225	H: 318-649-3457 / B: 225-433-0823 C: 318-267-6229 / B: 225-282-1917 C: 318-267-7270 / B: 225-900-5082 H: 318-240-4300 / C: 318-881-8049 C:
<b>DISTRICT 3</b> Bossier HQ	Dora Ginn Drew Latta Andrew Patton Mark Cannon Troy Turner David Long Jim Galloway Shirley Dwyer	Regional Forester Parish Forester Parish Forester Parish Forester Parish Forester Parish Forester Enforcement Enforcement	W: 318-949-3225 or 1400 W: 318-649-3225 W: 318-649-3225 or 1400 W: 318-785-3259 W: 318-785-3259 W: 318-649-3225 W: 318-649-3225 W: 318-649-3225 W: 318-649-3225	H: 310-309-5437 / B: 220-623-0823 C: 318-267-7270 / B: 225-282-1917 C: 318-407-6310 / B: 225-454-3126 C: 318-684-0302 H: 318-267-7270 / B: 225-282-1917 C: 318-267-7270 / B: 225-282-1917 C: 318-267-7270 / B: 225-282-1917
<b>DISTRICT 4</b> Iberia HQ DeRidder Office	Mark Casanova Mark Davis Jason Waggoner Doreen Eaves Mel Curran Erin Varnet Allyce Dwyer	Regional Forester Parish Forester Parish Forester Parish Forester Parish Forester Parish Forester Enforcement	W: 337-538-2878 W: 337-538-2878 W: 337-538-2878 W: 337-538-2878 W: 337-538-2878 W: 337-538-2878 W: 337-538-2878	H: 335-248-4519 / C: 335-254-2501 H: 318-585-3304 / C: 318-704-3010 C: 337-538-2878 C: 337-538-2878 C: 337-538-2878 C: 337-538-2878 C: 337-538-2878
<b>DISTRICT 5</b> Opelousas HQ	Mark Casanova Jason Waggoner Donald Carter	Regional Forester Parish Forester Enforcement	W: 337-538-2878 W: 337-538-2878 W: 225-580-2862	H: 335-248-4519 / C: 335-254-2501 C: 337-538-2878
<b>DISTRICT 6</b> Hammond HQ	Mark Casanova Matt Pate Jay Meadows Donna Hodge Eric Clark Donald Carter	Regional Forester Parish Forester Parish Forester Parish Forester Enforcement	W: 337-538-2878 W: 337-538-2878 W: 337-538-2878 W: 337-538-2878 W: 337-538-2878 W: 337-538-2878	H: 335-248-4519 / C: 335-254-2501 H: 337-538-2878 / C: 337-538-2878 C: 337-538-2878 C: 337-538-2878 C: 337-538-2878 C: 337-538-2878

1. CONTACTS NOT LISTED IN CONTACT LIST ARE: 24-hour hotline (number listed above)

**EXHIBIT E**

**1. Current Equipment Costs - Kisatchie National Forest**

<u>CLASS - TYPE EQUIPMENT</u>	<u>HOURLY RATE</u>	<u>MILEAGE RATE</u>	<u>SIZE CLASS</u>
515 - Tractor Crawler	35.00		520 JD 550
910 - Plow	NC		
645 - Transport		1.42	36000# G.V.W.
907- Trailer	NC		
40 - Van		.3	3500-4200 G.V.W.
151 - Pickup		.32	4800-5900 G.V.W.

**2. Current Equipment Costs - Louisiana Office of Forestry**

Louisiana Department of Agriculture and Forestry/Office of Forestry's rates are published in the South Central Forest Fire Compact, these rates are subject to amendment.

To view or download the LDAF rates, please visit the Southern Area Coordination Center website. The published rates are located in the administrative portion under Incident Business Management, Southern Area Compact Rates. All rates are reviewed and updated annually.

<http://gacc.nifc.gov/sacc/>

LDAF, Office of Forestry "Equipment by Standby Locations" List

Exhibit B.2

LDAF, Office of Forestry "Equipment by Standby Locations"  
updated: 10/08/2015

District	Parish	Location	Lat	Long	# Fire Fighters	# Fire Foresters	Bulldozers JD 650	Bulldozers JD 750	Engine Type 6	Engine Type 5	ATV
1	Berwick	Salce Standby	32.362570	-93.140010	3	0	2	0	0	0	3
	Bossier	Fayette HQ	32.545690	-93.322050	2	1	1	0	0	0	2
	Caddo	Lumpkin Standby	32.636430	-93.942310	1	0	2	0	0	0	0
	Calderne	Homer Standby	32.753620	-93.074740	3	0	4	0	1	0	1
	Jackson	Christam Standby	32.353240	-92.453430	2	0	2	0	0	0	1
	Lincoln	Ruston Standby	32.593000	-92.549000	1	0	1	0	0	0	1
	Union	Camdenville Standby	32.825479	-92.404270	1	0	1	0	0	0	0
	Webster	Minion Standby	32.632400	-93.283800	4	2	4	1	1	1	3
2	DeCade	Merrow HQ	32.591257	-92.014333	4	1	5	1	1	1	7
	W. Carroll	Cox Grove	32.848000	-91.399000	1	0	1	0	0	0	1
3	Caldwell	Grayson Standby	32.059900	-92.158900	3	0	2	0	0	1	1
	DeSoto	Grand Curie Standby	32.063900	-92.756500	3	0	2	0	0	0	0
	Grant	Po Lockhart Standby	31.477100	-91.464900	4	0	3	1	1	3	0
	LeFlore	Jena HQ	31.670800	-91.159500	3	1	3	0	0	0	1
	LeFlore	Cila Standby	31.891080	-91.241820	2	0	3	0	1	0	1
	Natchitoches	Natchitoches	31.724304	-91.086301	3	1	3	1	0	1	1
	Red River	Coushatta Standby	32.014750	-91.341138	3	1	3	0	0	3	1
	Sabine	Tisher Standby	31.489400	-91.462100	2	0	4	0	1	3	1
4	Winn	Winn Standby	31.962200	-91.056100	0	0	0	0	0	0	0
	Allen	Albia Standby	30.677800	-92.927000	2	0	2	0	0	0	0
	Allen	Cedar HQ	30.604632	-92.774375	4	1	4	1	0	1	2
	Beauregard	OnRider Standby	30.826280	-93.322250	8	1	7	1	0	1	1
	Beauregard	Gordon Standby	30.490220	-93.336430	0	0	2	0	0	0	0
	Evangelist	Beaver Standby	30.790300	-92.487200	6	0	4	0	1	0	2
	Rapides	Plamew Standby	30.333400	-92.767000	4	0	4	0	1	0	1
5	Rapides	Woodworth Compound	31.139680	-92.471620	3	0	1	0	0	0	1
	Vernon	Locville Standby	31.139680	-93.306250	4	1	3	0	1	0	1
6	St. Landry	Copeland HQ	30.517500	-92.065400	0	1	0	0	0	0	1
	East Feliciana	Clinton Standby	30.834000	-91.009000	1	1	2	0	1	0	2
	Livingston	Whitson Standby	30.155000	-90.752000	3	0	3	1	0	1	0
	St. Helena	Fire Grove Standby	30.711000	-90.752000	3	1	3	0	0	0	0
	St. Helena	Liverpool Standby	30.926342	-90.729425	2	0	2	0	1	0	0
7	St. Tammany	Abita Standby	30.439000	-90.045000	6	0	4	0	1	0	1
	Tangipahoa	Hammond HQ	30.535540	-90.451740	4	0	5	1	0	1	0
	Washington	Shelton Standby	30.858000	-91.074000	6	1	5	0	1	1	2
TOTALS					104	14	95	8	13	8	31

CONTACT PHONE NUMBERS

LDAF 24-HR HOTLINE 1-855-452-5323  
Forestry Headquarters 225-325-4500  
District 1 318-349-3225  
District 2 318-345-7585  
District 3 318-992-1400  
District 4 337-539-4578  
District 5 337-345-0230  
District 6 985-543-4057

**EXHIBIT F**

1. USFS Fire Report Forms – Located in Dispatch (209)
2. State Fire Report – (209)



**EXHIBIT G**

**1. Training Schedule - Kisatchie National Forest and Louisiana Office of Forestry**

**Course Name**

**Date(s)**

**Location**

To be coordinated and announced at a later date.

Courses being considered for FY2016 include S-131, S-212, and S-270.

**Exhibit H**  
**LDAF Radio Frequency List**

**LDAF VHF RADIO FREQUENCY LIST**

page 1 of 2

UPDATED: 07/14/14

CH.	RX FREQ	RX TONE	TX FREQ	TX TONE	DIST	CHANNEL NAME
1						
2						
3						
4	154.280	110.9	154.280	110.9	SW	MUTIAL AID FOR FIRE DEPTS.
10	151.295	110.9	151.295	167.9	D-6	REPEATER TALKAROUND
11	151.295	110.9	159.405	167.9	D-6	REPEATER GREENSBURG
12	151.295	110.9	159.405	151.4	D-6	REPEATER SLIDELL
13	151.295	110.9	159.405	136.5	D-6	REPEATER ROBERT (LORRAINE)
14	151.295	110.9	159.405	123.0	D-6	REPEATER SHERIDAN
15	159.285	110.9	159.285	110.9	D-6	FIRELINE SW (COMPAC TX, ARK, MS)
16	151.295	110.9	159.405	100	D-6	SPARE REPEATER
17	159.390	NONE	159.390	NONE	D-6	FIRELINE D-6 & D5,
18	151.175	110.9	151.175	110.9	D-6	TOWERS D-6
19	151.400	110.9	151.400	110.9	D-6	TOWER 2ND D6 & D4
20	159.435	110.9	159.435	110.9	D-4	REPEATER TALKAROUND & ST. CHARLES PAR.
21	159.435	110.9	151.250	167.9	D-4	REPEATER SUNSET
22	159.435	110.9	151.250	151.4	D-4	REPEATER BEAVER
23	159.435	110.9	151.250	136.5	D-4	REPEATER WOODLAWN
24	159.435	110.9	151.250	123.0	D-4	REPEATER SCOTT (LAFAYETTE)
25	159.435	110.9	151.250	100.0	D-4	REPEATER SPARE
26	159.285	110.9	159.285	110.9	D-4	FIRELINE SW (COMPAC TX, ARK, MS)
27	151.265	110.9	151.265	110.9	D-4	FIRELINE D4 & D3
28	151.175	NONE	151.175	NONE	D-4	TOWER D4 & D6
29	151.295	100.0	151.295	100.0	D-4	TOWER 2ND D4 & D6
30	151.280	110.9	151.280	110.9	D-3	REPEATER TALKAROUND
31	151.280	110.9	159.300	167.9	D-3	REPEATER WHEELING
32	151.280	110.9	159.300	151.4	D-3	REPEATER JENA
33	151.280	110.9	159.300	136.5	D-3	REPEATER BANK SPRINGS
34	151.280	110.9	159.300	123.0	D-3	REPEATER BALL
35	151.280	110.9	159.300	100.0	D-3	REPEATER WINONNA
36	151.280	110.9	159.300	91.5	D-3	REPEATER EVA
37	159.285	110.9	159.285	110.9	D-3	FIRELINE SW (COMPAC TX, ARK, MS)
38	151.265	NONE	151.265	NONE	D-3	FIRELINE D4 & D3
39	159.420	NONE	159.420	NONE	D-3	FIRELINE
40	151.235	110.9	151.235	110.9	D-1	REPEATER TALKAROUND
41	151.235	110.9	159.345	167.9	D-1	REPEATER BELLVUE
42	151.235	110.9	159.345	91.5	D-1	REPEATER BLACKBURN
43	151.235	110.9	159.345	136.5	D-1	REPEATER GREENWOOD
44	151.235	110.9	159.345	123.0	D-1	REPEATER SAILES
45	151.235	110.9	159.345	100.0	D-1	REPEATER PLAINDEALING
46	151.235	110.9	159.345	110.9	D-1	REPEATER JACKSON
47	159.285	110.9	159.285	110.9	D-1	FIRELINE SW & COMPACT
48	151.415	NONE	151.415	NONE	D-1	FIRELINE D6 & D5
49	159.390	NONE	159.390	NONE	D-1	FIRELINE D3 & D1
50	151.325	110.9	151.325	110.9	D-2	REPEATER TALKAROUND
51	151.325	110.9	159.315	167.9	D-2	REPEATER UNION
52	151.325	110.9	159.315	151.4	D-2	REPEATER BASTROP
53	151.325	110.9	159.315	136.5	D-2	REPEATER CALHOUN
54	151.325	110.9	159.315	123.0	D-2	REPEATER SPARE
55	151.325	110.9	159.315	100.0	D-2	REPEATER DUNN
56	151.325	110.9	159.315	91.5	D-2	REPEATER FOREST
57	151.325	110.9	159.315	110.9	D-2	REPEATER RUSTON
58	150.285	110.9	150.285	110.9	D-2	FIRELINE SW & COMPACT

# KNF Radio Frequency List

## MIDLAND MOBILES-2003

## STANDARD CHANNELS

Mobile CH	Name	Narrow Band	RX	RX Tone	TX	TX Tone	SCAN MODE	L.O.F. Channel
1	KNF FOREST NET	X	169.9250	110.9	169.9250	110.9	PRI/SCN	
2	KNF EVA/CAN RPTR	X	169.9250	110.9	170.5250	167.9		
3	KNF KIS/CORNEY RPTR	X	169.9250	110.9	170.5250	136.5		
4	KNF WINN RPTR	X	169.9250	110.9	170.5250	103.5		
5	KNF GORUM RPTR (PROPOSED)	X	169.9250	110.9	170.5250	146.2		
6	FS PROJECT NET (EVAN/WINN)		164.9375	110.9	164.9375	110.9		
7	FS PROJECT NET (KIS/CAN)		164.9375	123.0	164.9375	123.0		
8	FS PROJECT NET (VRN/CAT)		164.9375	131.8	164.9375	131.8		
9	FS REGION-PROJECT FIRE NET		169.9000		169.9000			
10	FS FLT FOLLOW		168.6500		168.6500	110.9		
11	AIR-TO-GRND TACTICAL		168.3500		168.3500			
12	TAC 1 (EVAN/WIN)		168.0500		168.0500			
13	TAC 2 (KIS/CAN)		168.2000		168.2000			
14	TAC 3 (VRN/CAT)		168.6000		168.6000			
15	LOF STATEWIDE FIRELINE		159.2850	110.9	159.2850	110.9		MISC
16	FS AIR GUARD (EMERGENCY)		168.6250		168.6250		PRI/SCN	

## Evangeline Unit Mobile Frequencies

Mobile CH	Name	Narrow Band	RX	RX Tone	TX	TX Tone	SCAN MODE	L.O.F. Channel
20	L.O.F. D2 TALKAROUND		159.4350	110.9	159.4350	110.9		CH 20
21	L.O. F. D2 FIRELINE		151.2650		151.2650			CH 27
22	L.O.F. D2 SUNSET RPTR		159.4350	110.9	151.2500	167.9		CH 21
23	L.O.F. D7 TALKAROUND		151.3700	110.9	151.3700	110.9		CH 70
24	L.O.F. D7 ROSEPIKE RPTR		151.3700	110.9	159.3150	162.2		CH 72
25	EAFB (CLAIBORNE RANGE)		150.1500		150.1500			
26	FT. POLK RANGE CONTROL		150.4250		150.4250			
27	FT. POLK FORESTRY		150.7250		151.7250			
28	RAPIDES VFD TALKAROUND		155.9250		155.9250	179.9		
29	RAPIDES PARISH 911 COMM CTR		155.9250	179.9	153.7550	179.9		

Kisatchie RD Mobile Frequencies

Mobile	CH	Name	Narrow Band	RX	RX Tone	TX	TX Tone	SCAN MODE	L.O.F. Channel
30		L.O.F. D6 TALKAROUND		151.1450	110.9	151.1450	110.9		CH 60
31		L.O.F. D6 GORUM RPTR		151.1450	110.9	159.4500	123.0		CH 64
32		L.O.F. D6 MANSFIELD		151.1450	110.9	159.4500	167.9		CH 61
33		L.O.F. D6 MANY RPTR		151.1450	110.9	159.4500	151.4		CH 62
34		L.O.F. D6 POSEY RPTR		151.1450	110.9	159.4500	136.5		CH 63
35		L.O.F. D3 TALKAROUND		151.2800	110.9	151.2800	110.9		CH 30
36		L.O.F. D3 FIRELINE		159.4200		159.4200			CH 39
37		L.O.F. D3 WHEELING RPTR		151.2800	110.9	159.3000	167.9		CH 31
38		L.O.F. D3 JENA RPTR		151.2800	110.9	159.3000	151.4		CH 32
39		NATCHITOCHES PARISH 911		154.3700	167.9	153.8900	167.9		

Winn RD Mobile Frequencies

Mobile	CH	Name	Narrow Band	RX	RX Tone	TX	TX Tone	SCAN MODE	L.O.F. Channel
40		L.O.F. D3 TALKAROUND		151.2800	110.9	151.2800	110.9		CH 30
41		L.O.F. D3 FIRELINE		159.4200		159.4200			CH 39
42		L.O.F. D3 WHEELING RPTR		151.2800	110.9	159.3000	167.9		CH 31
43		L.O.F. D3 JENA RPTR		151.2800	110.9	159.3000	151.4		CH 32
44		L.O.F. D6 TALKAROUND		151.1450	110.9	151.1450	110.9		CH 60
45		L.O.F. D6 FIRELINE		151.2650		151.2650			CH 68
46		L.O.F. D6 POSEY RPTR		151.1450	110.9	159.4500	136.5		CH 63

Mobile	CH	Name	Narrow Band	RX	RX Tone	TX	TX Tone	SCAN MODE	L.O.F. Channel
47									
48									
49									

Vernon Unit Mobile Frequencies

Mobile	CH	Name	Narrow Band	RX	RX Tone	TX	TX Tone	SCAN MODE	L.O.F. Channel
50		L.O.F. D2 TALKAROUND		159.4350	110.9	159.4350	110.9		CH 20
51		L.O.F. D2 FIRELINE		151.2650		151.2650			CH 27
52		L.O.F. D2 SUNSET RPTR		159.4350	110.9	151.2500	167.9		CH 21
53		L.O.F. D7 TALKAROUND		151.3700	110.9	151.3700	110.9		CH 70
54		L.O.F. D7 FIRE TOWER CHANNEL		151.4000	110.9	151.4000	110.9		CH 78
55		L.O.F. D7 ROSEPINE RPTR		151.3700	110.9	159.3150	162.2		CH 72
56		EAFB (CLAIBORNE RANGE)		150.1500		150.1500			
57		FT. POLK RANGE CONTROL		150.4250		150.4250			
58		FT. POLK FORESTRY		150.7250		150.7250			
59		VERNON PARISH 911		154.2650	131.8	153.83	131.8		

Caney RD Mobile Frequencies

Mobile	CH	Name	Narrow Band	RX	RX Tone	TX	TX Tone	SCAN MODE	L.O.F. Channel
60		L.O.F. D4 TALKAROUND		151.2350	110.9	151.2350	110.9		CH 40
61		L.O.F. D4 FIRELINE		159.3900		159.3900			CH 48
62		L.O.F. D4 FIRELINE (SECONDARY)		151.4150		151.4150			CH 49
63		L.O.F. D4 BLACKBURN RPTR		151.2350	110.9	159.3450	91.5		CH 42
64		L.O.F. D4 BELLVUE RPTR		151.2350	110.9	159.3450	167.9		CH 41
65		L.O.F. D4 GREENWOOD RPTR		151.2350	110.9	159.3450	136.5		CH 42
66		L.O.F. D4 SAILS RPTR		151.2350	110.9	159.3450	123.0		CH 43
67									
68									
69									

Catahoula RD Mobile Frequencies

Mobile	CH	Name	Narrow Band	RX	RX Tone	TX	TX Tone	SCAN MODE	L.O.F. Channel
70		L.O.F. D3 TALKAROUND		151.2800	110.9	151.2800	110.9		CH 30
71		L.O.F. D3 FIRELINE		159.4200		159.4200			CH 39
72		L.O.F. D3 JENA RPTR		151.2800	110.9	159.3000	151.4		CH 32
73		L.O.F. D5 TALKAROUND		151.3250	110.9	151.3250	110.9		CH 50
74		L.O.F. D5 FIRELINE		151.2650		151.2650			CH 59
75		L.O.F. D5 CALHOUN RPTR		151.3250	110.9	151.3150	136.5		CH 53
76		GRANT PARISH VFD		154.3850	+174	154.3850	+174		
77		GRANT PARISH VFD RPTR		154.3850	+174	153.8900	+174		
78									
79									

Weather Frequencies

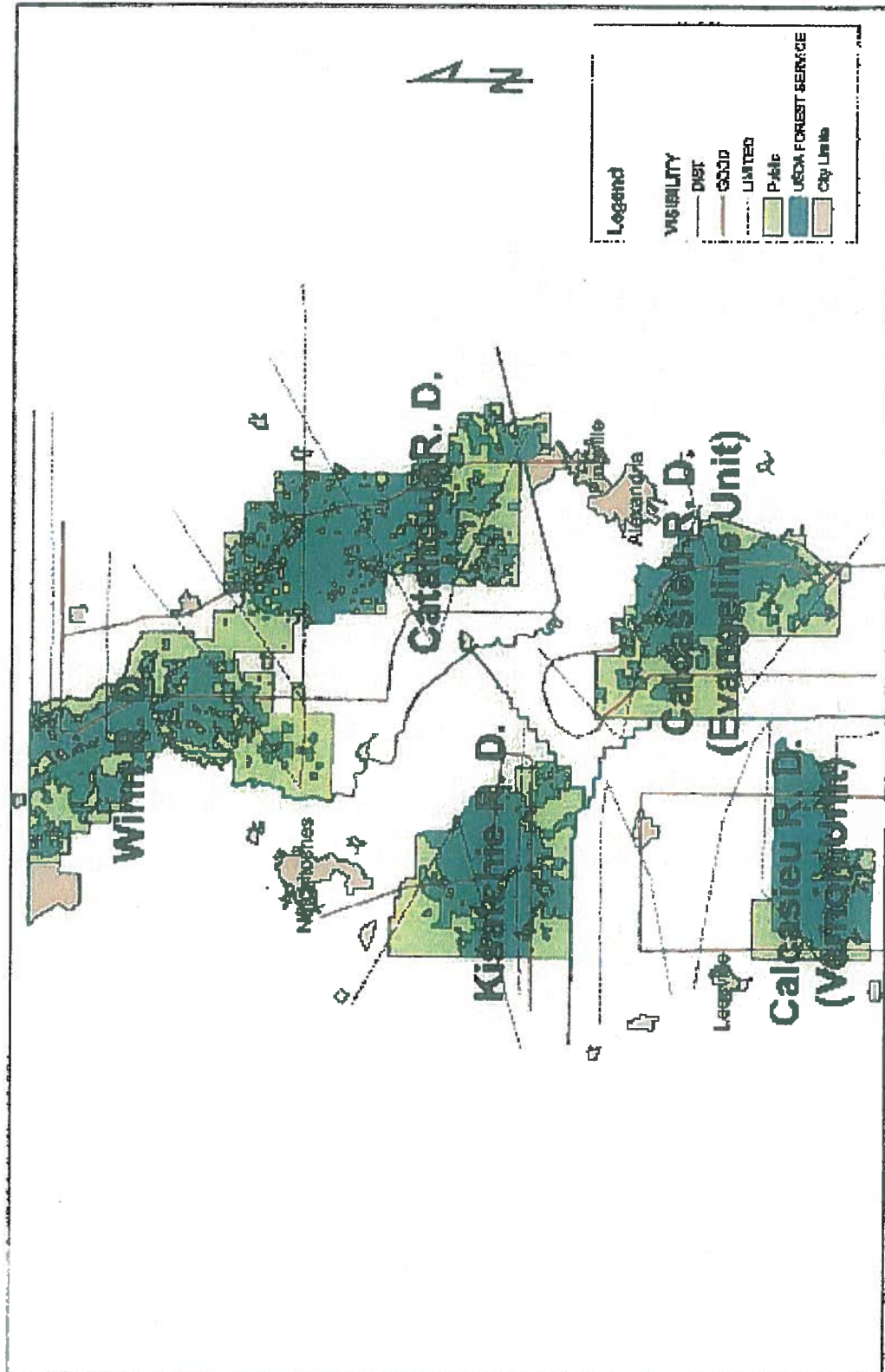
Mobile	CH	Name	Narrow Band	RX	RX Tone	TX	TX Tone	SCAN MODE	L.O.F. Channel
80		WX SHREVEPORT		162.4000					
81		WX MONROE		162.5500					
82		WX LAKE CHARLES		162.4750					

LOF AIR FREQS

90		L.O.F. AIR/GRND, FLT FOLLOW		151.4450	100.0	151.4450	100.0		CH 90
----	--	-----------------------------	--	----------	-------	----------	-------	--	-------

**Exhibit I**  
**Aerial Detection Routes**

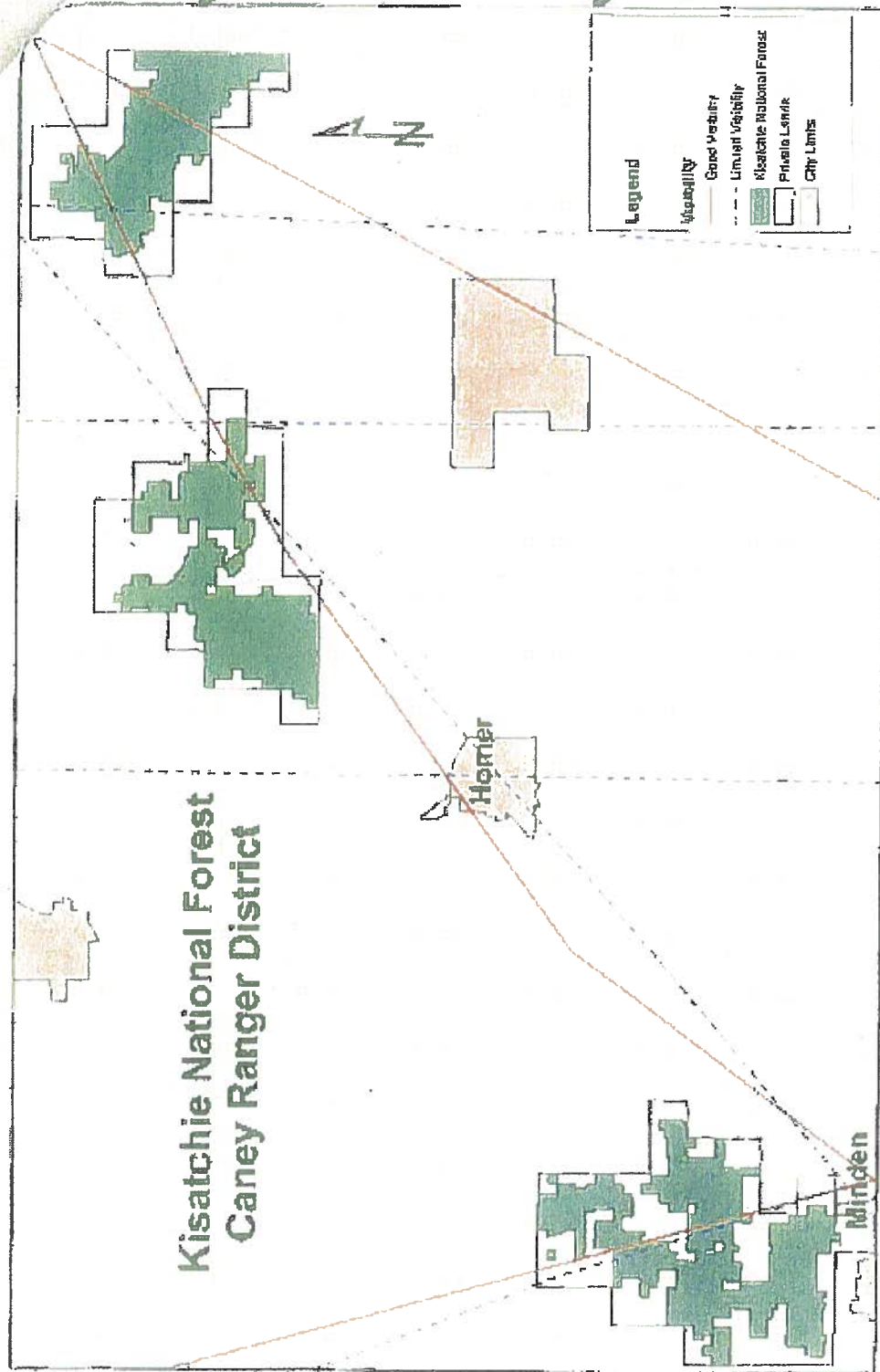
# State Detection Flight Routes



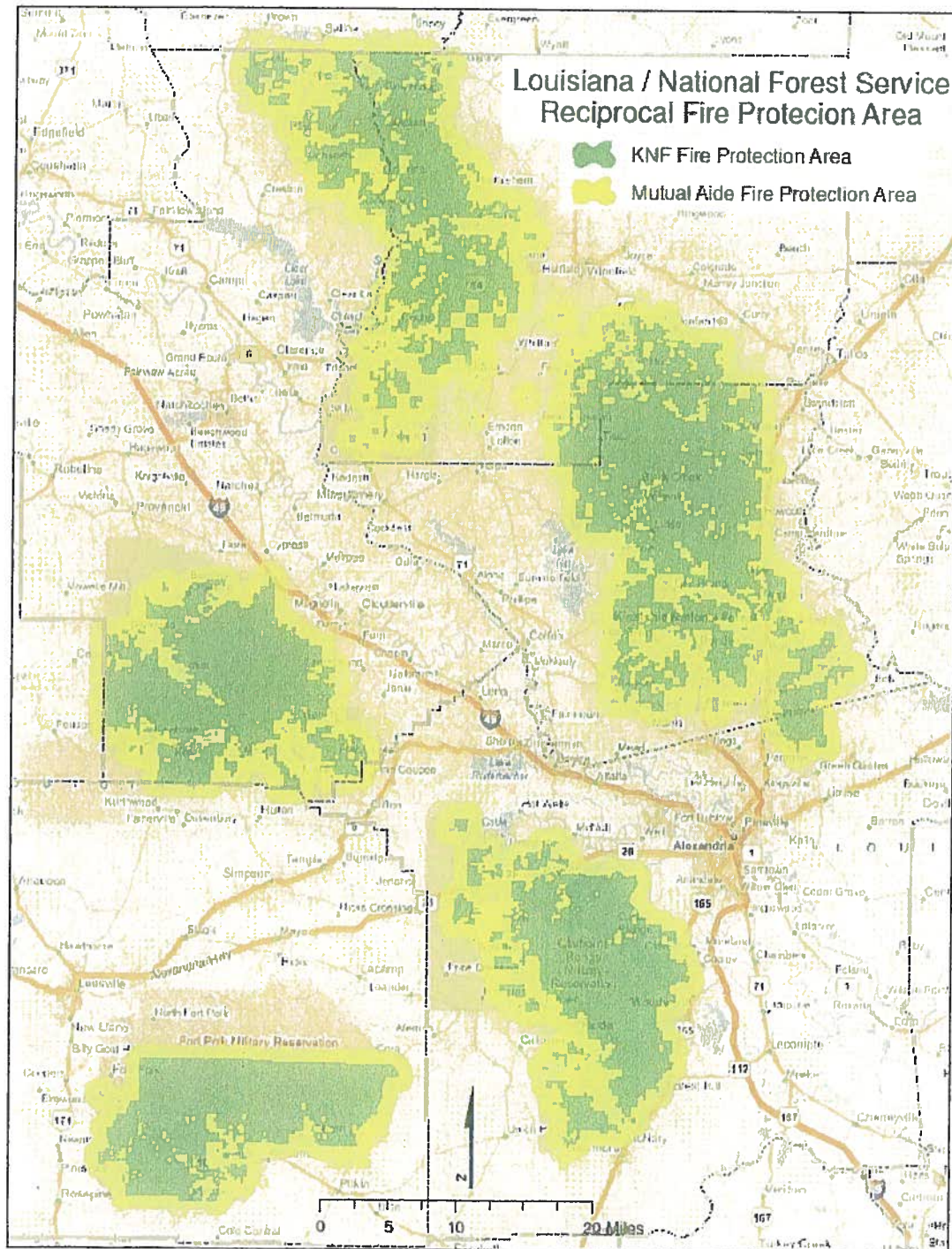


**(PAGE LEFT BLANK)**

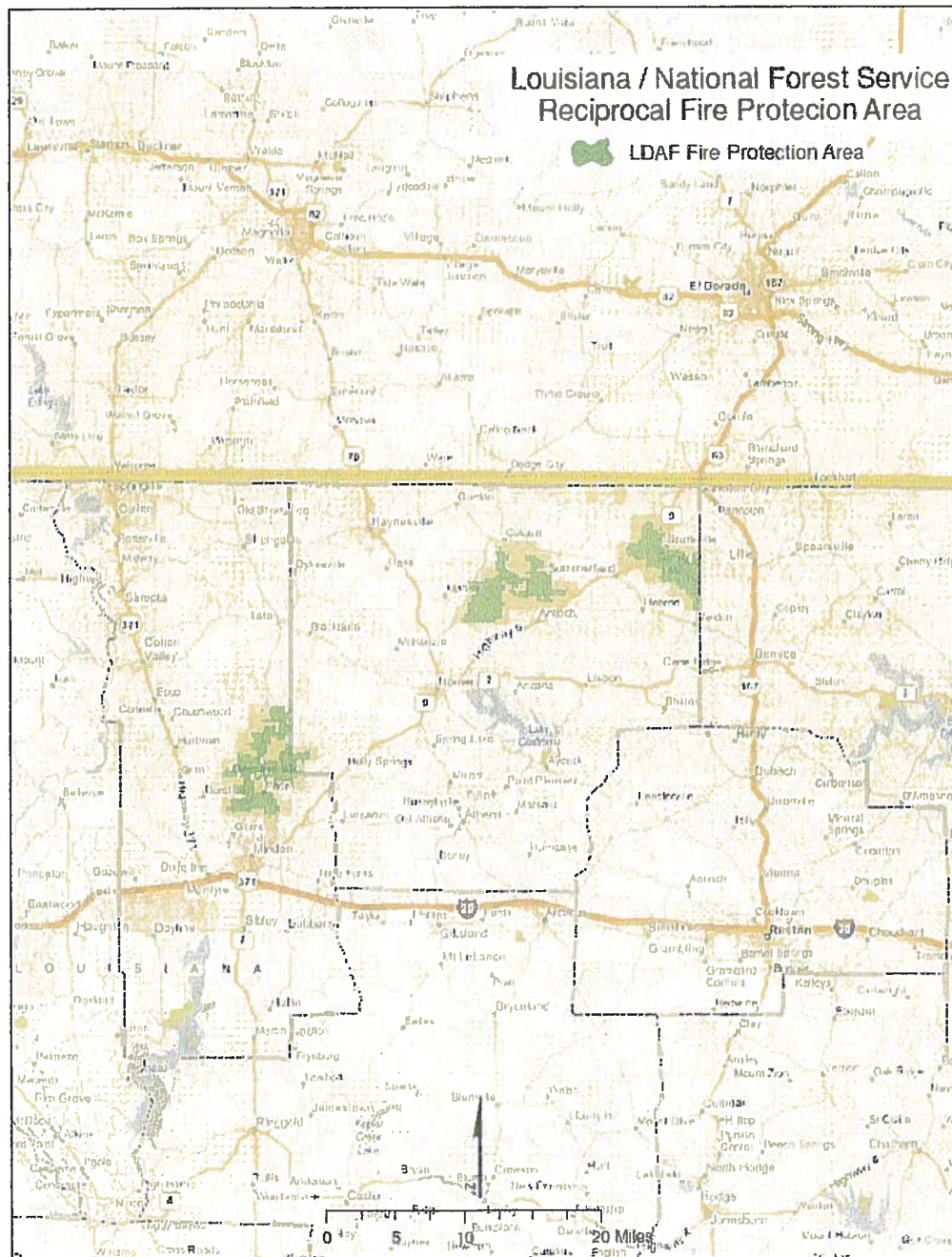
## State Detection Flight Routes



**EXHIBIT J**  
**Reciprocal Fire Protection Areas**  
(See Original Agreement)

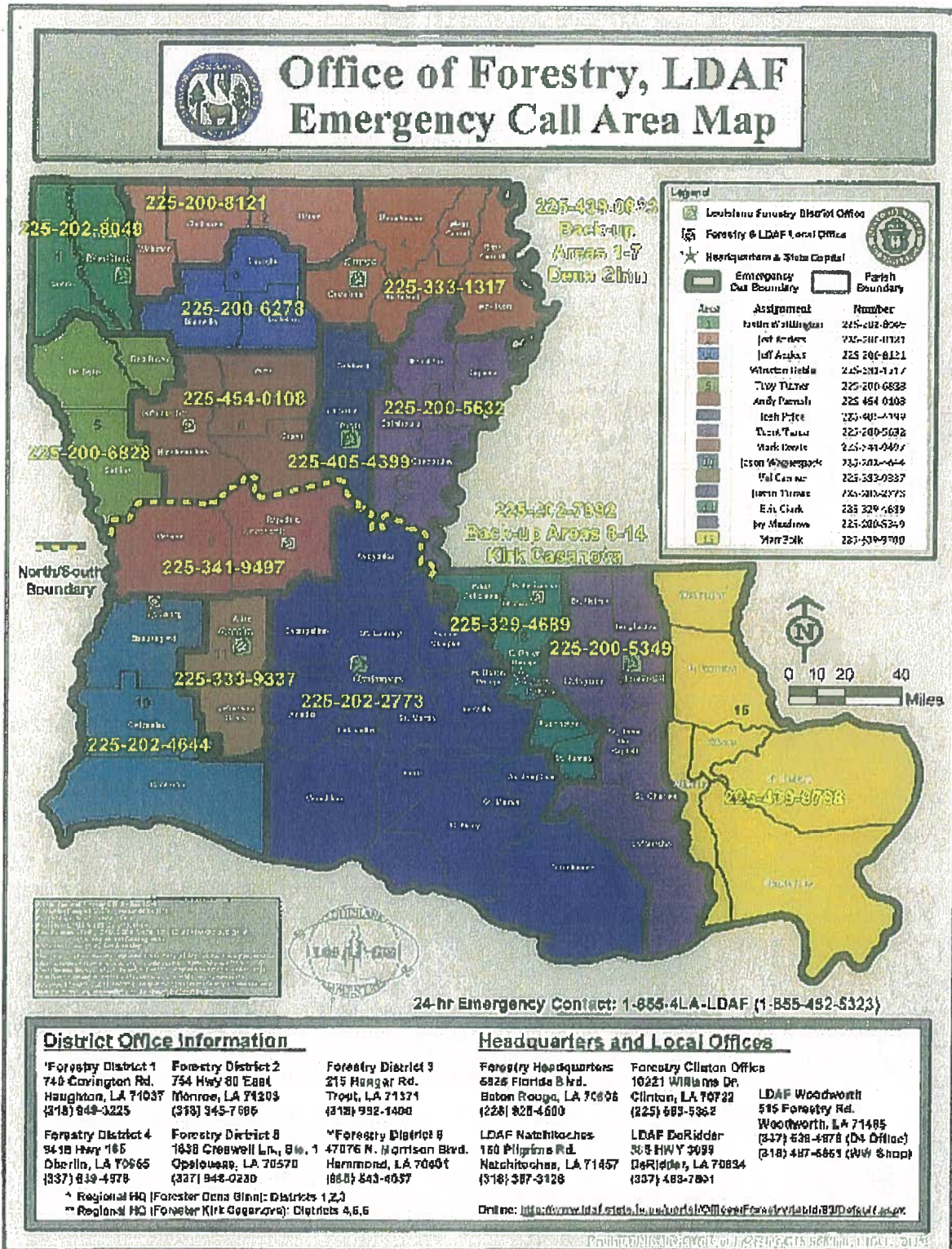






**EXHIBIT K**  
**Louisiana Office of Forestry Districts**  
**(See Original Agreement)**





**EXHIBIT L**  
**Aerial Detection**

Minimum Fixed Wing Requirements	Cessna 182 or equivalent Radio with the Kisatchie Forest Net RX 169.9250 Tone 110.9 TX 169.9250 Tone 110.9 Air-to-ground Tactical RX 168.3500 TX 168.3500
Pilot Requirements	Annual Training Program with approved Department Check Airman. Pilot should maintain FAA currency and also should remain proficient.
Detection	The LDAF Regional Forester (area supervisor) is responsible to assure that operations provide adequate detection of fires with a minimum risk factor district wide. When a fire is detected on National Forest land within that district, the Pilot will immediately notify Pineville Dispatch on Frequency (168.6500). The plane will remain in area, unless it is determined the plane is needed elsewhere by LDAF . The pilot will communicate with the Incident Commander on the Air-to-ground tactical channel. If the aircraft cannot remain in the area, the state will make every attempt to send another detection plane if available.
Documentation	The State will include documentation of days and hours flown on detection flights by LDAF Districts, with the submission of the bill for payment of detection flights.

Louisiana - Office of Forestry  
**AERIAL DETECTION AIRCRAFT**

10/08/2015

TYPE: 2003 Cessna 182T

**"AIR-TO-GROUND" Contact:**

Ground personnel should utilize the appropriate LDAF District's "Talk Around" channel to establish contact with LDAF aircraft. Once communications are established, switch to a "fireline" or "tactical" channel.

\*\*\*reference the attached Radio Frequency list and/or the Statewide Wildfire Call-Out List.

DISTRICT	TAIL #	CALL - SIGN	PILOT'S NAME
1	N241AF	AIR 42	MATT DANIELS
2	N252AF	AIR 51	CHRIS ODOM
3	N261AF	AIR61	JAMES MAXEY
3	N232AF	AIR32	JAMES HARLAN
4 & 5	N281AF	AIR21	VERNON KNOWLES
4&5	N382AF	AIR71	STEVE BARY
6	N811AF	AIR11	JIM SHAW
6	N812AF	AIR10	DAMIAN JOHNSON



**Exhibit M**

**GUIDELINES for WILDFIRE SUPPRESSION  
on U.S. FOREST SERVICE PROPERTY (Entire or Partial)  
by  
LDAF WILDLAND FIRE CREWS**

10/02/2014

**NOTE:** As per the Cooperative Fire Protection Agreement and the Annual Action Plan, entered into between the Louisiana Department of Agriculture and Forestry (LDAF) and the U.S. Forest Service, Kisatchie National Forest (USFS, KNF)...

“Each agency arriving at an unstaffed wildfire within the areas agreed to at the Annual Cooperative meeting between the USFS, KNF and the LDAF will take prompt suppression action regardless of land ownerships. The most qualified individual arriving first on the incident will act as the Incident Commander (IC) until relieved by an Incident Commander of the Jurisdictional Agency.”

**GUIDELINES**

**When an “Unstaffed” Wildfire is Detected on USFS property, LDAF shall...**

- 1) Dispatch LDAF personnel and equipment immediately to scene of wildfire.
- 2) Notify the Pineville Dispatch (318-473-7152) or the Forest Service Dispatcher (318-613-7271) as to the fire’s location, estimated size, resources threatened, etc.

Ask the USFS representative “if they would like for LDAF to begin suppression operations or any other type of assistance requested.” Record the Date, Time and To Whom this notification was provided, along with any type of assistance requested.

- 3) When USFS personnel arrive on scene, the LDAF IC may either establish a “unified command” or transfer command to the USFS IC. IC’s will formulate, establish and notify all personnel to the command structure, operational tactics and communication plan for the incident. Each agency will be responsible for their personnel and equipment.

- 4) LDAF personnel may continue to assist with the suppression operation until relieved or released by the USFS IC.

- 5) If LDAF personnel are the only “on-scene” resource, following containment LDAF personnel will notify the appropriate USFS Dispatch Center as to the fire’s containment time, the demobing of LDAF personnel, etc.

- 6) GPS the entire fire and complete an LDAF Fire Report (see below). A copy of the Fire Report and GPS shapefile shall be provided to the appropriate USFS, KNF district, in a timely manner.

