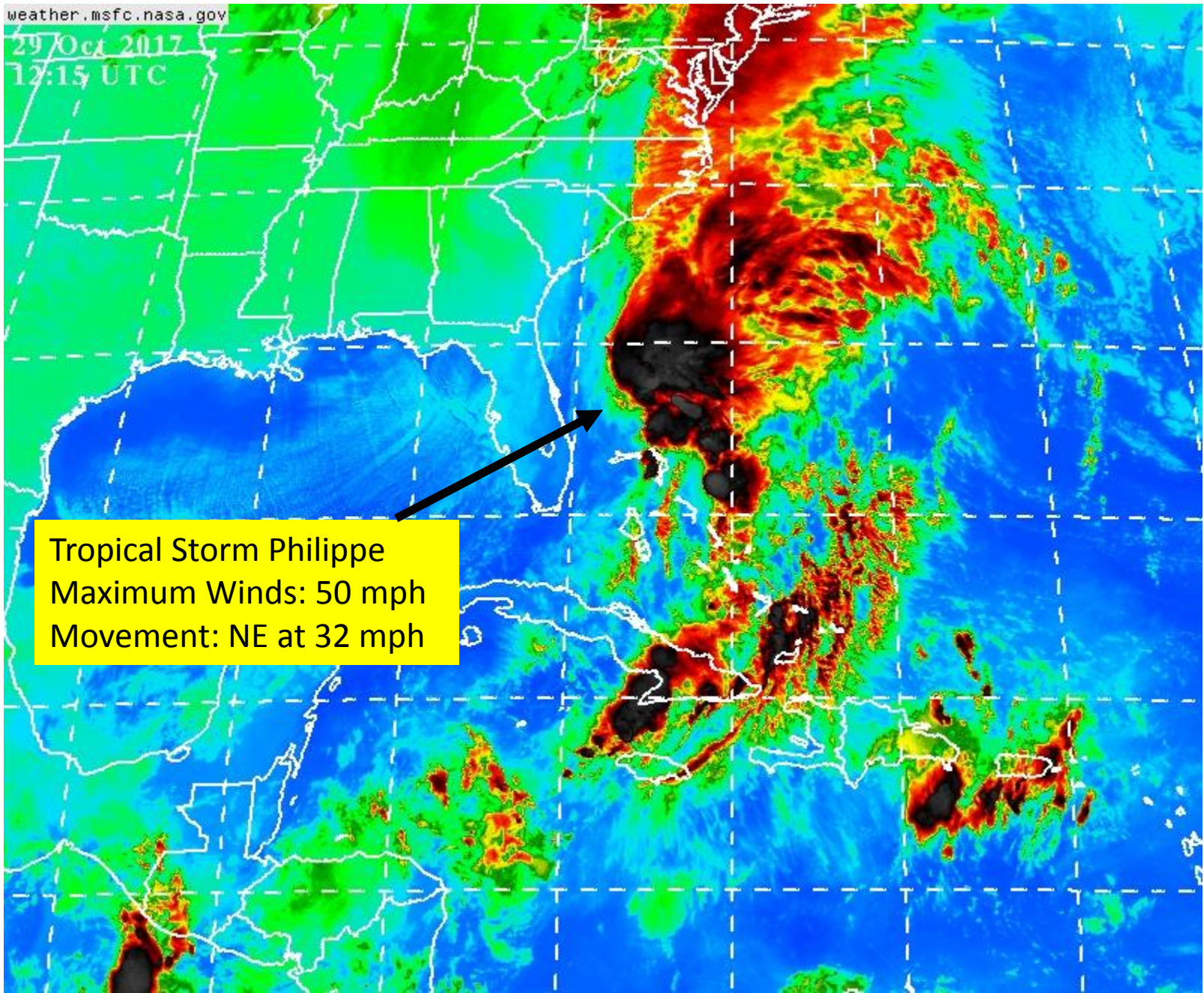
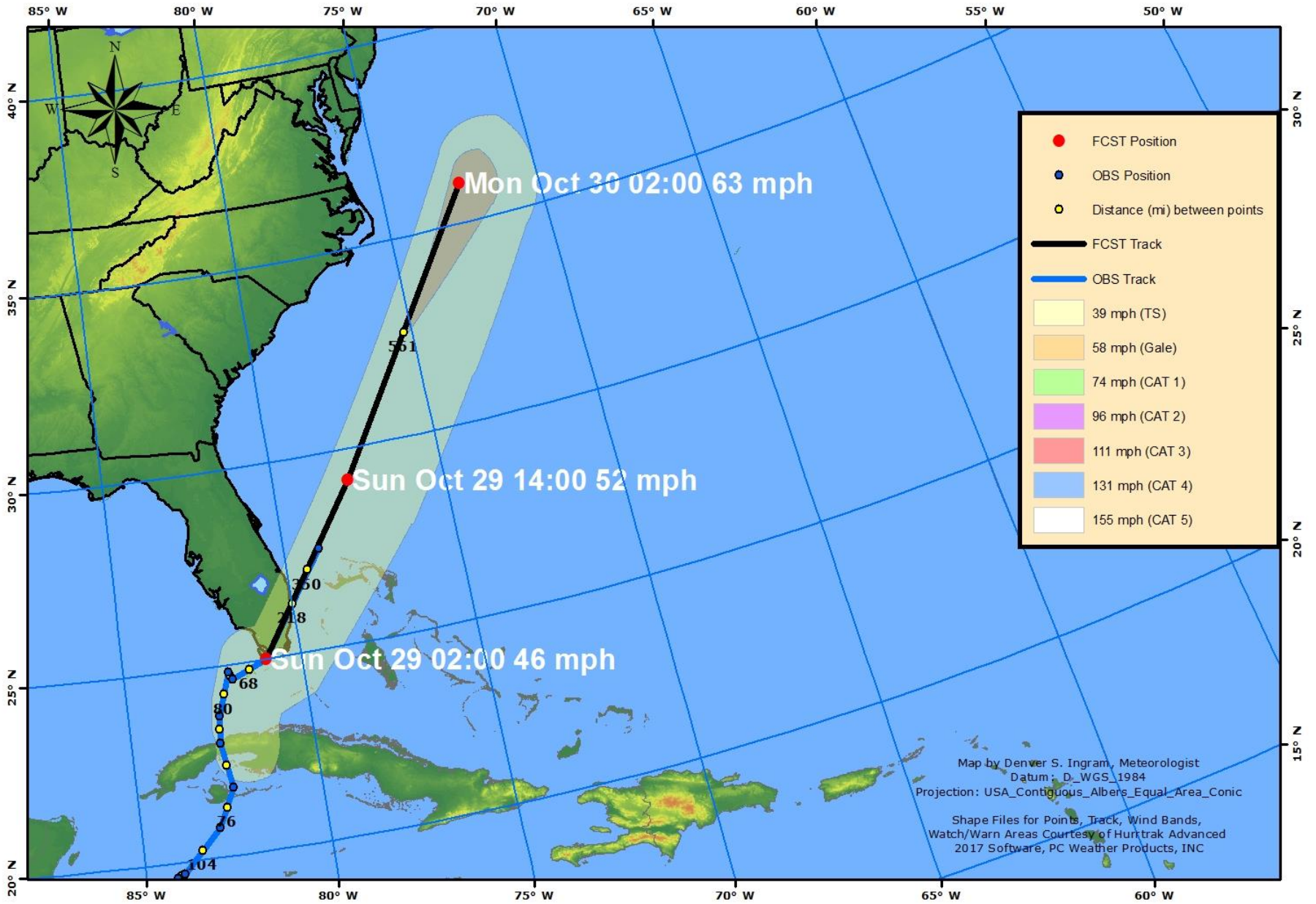


29 Oct 2017
12:15 UTC

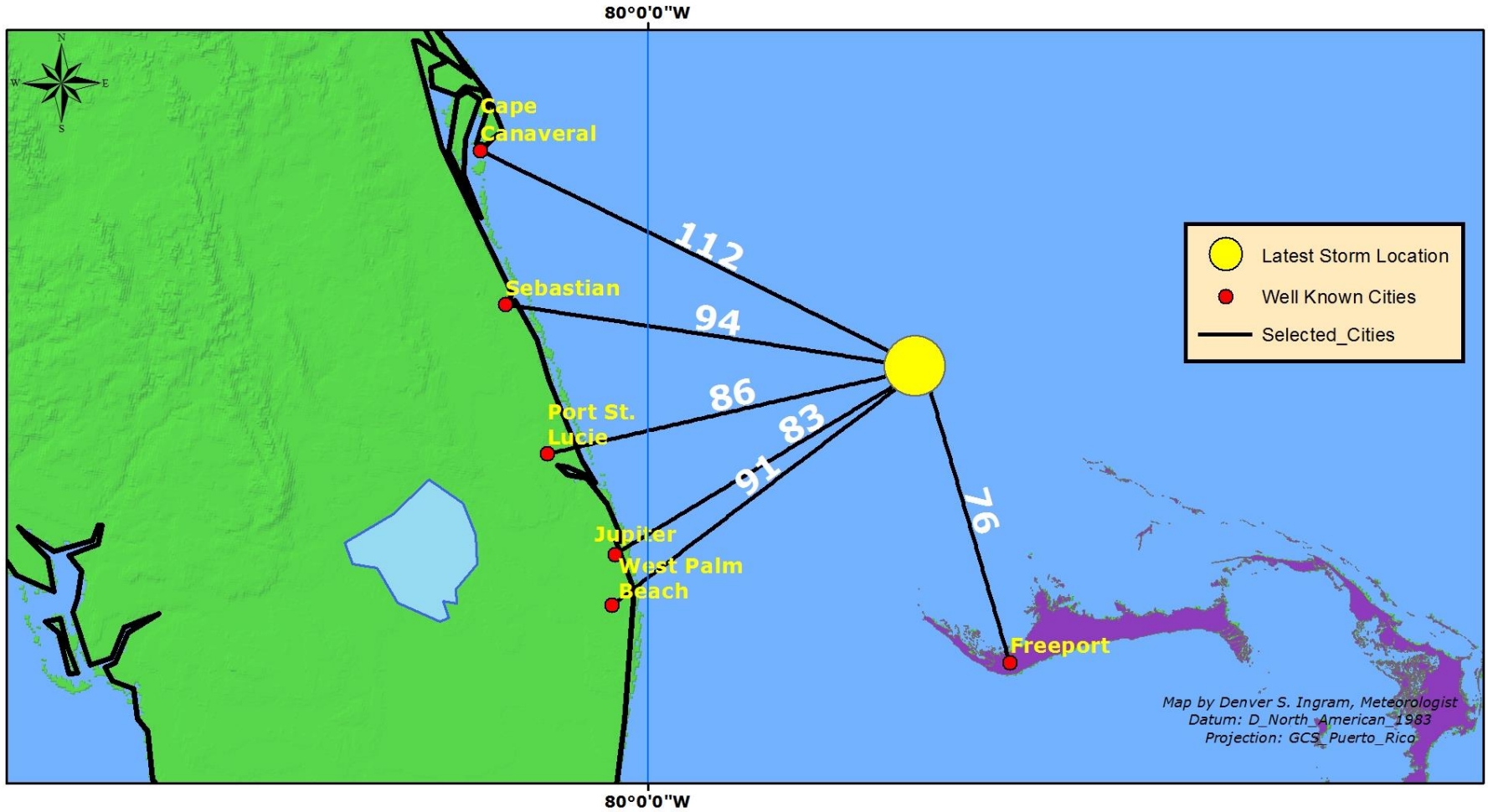


Tropical Storm Philippe
Maximum Winds: 50 mph
Movement: NE at 32 mph



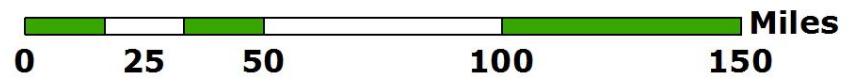
TROPICAL STORM PHILIPPE
Sunday, October 29, 2017
Maximum Winds: 50 mph
Movement: NE AT 32 mph





Map Scale: 1:1,500,000

TROPICAL STORM PHILIPPE
 Sunday, October 29, 2017
 Maximum Winds: 50 mph
 Movement: NE AT 32 mph

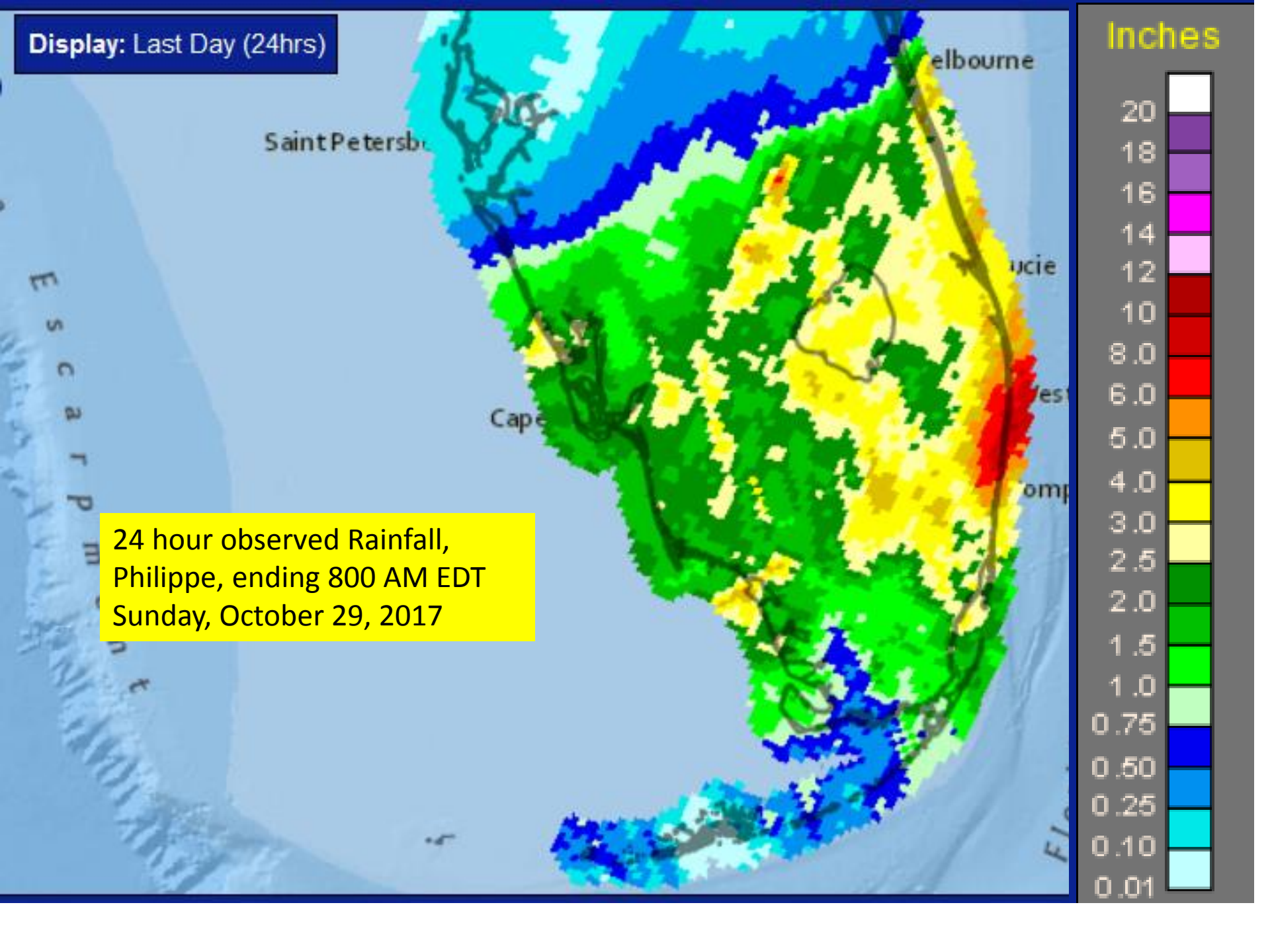


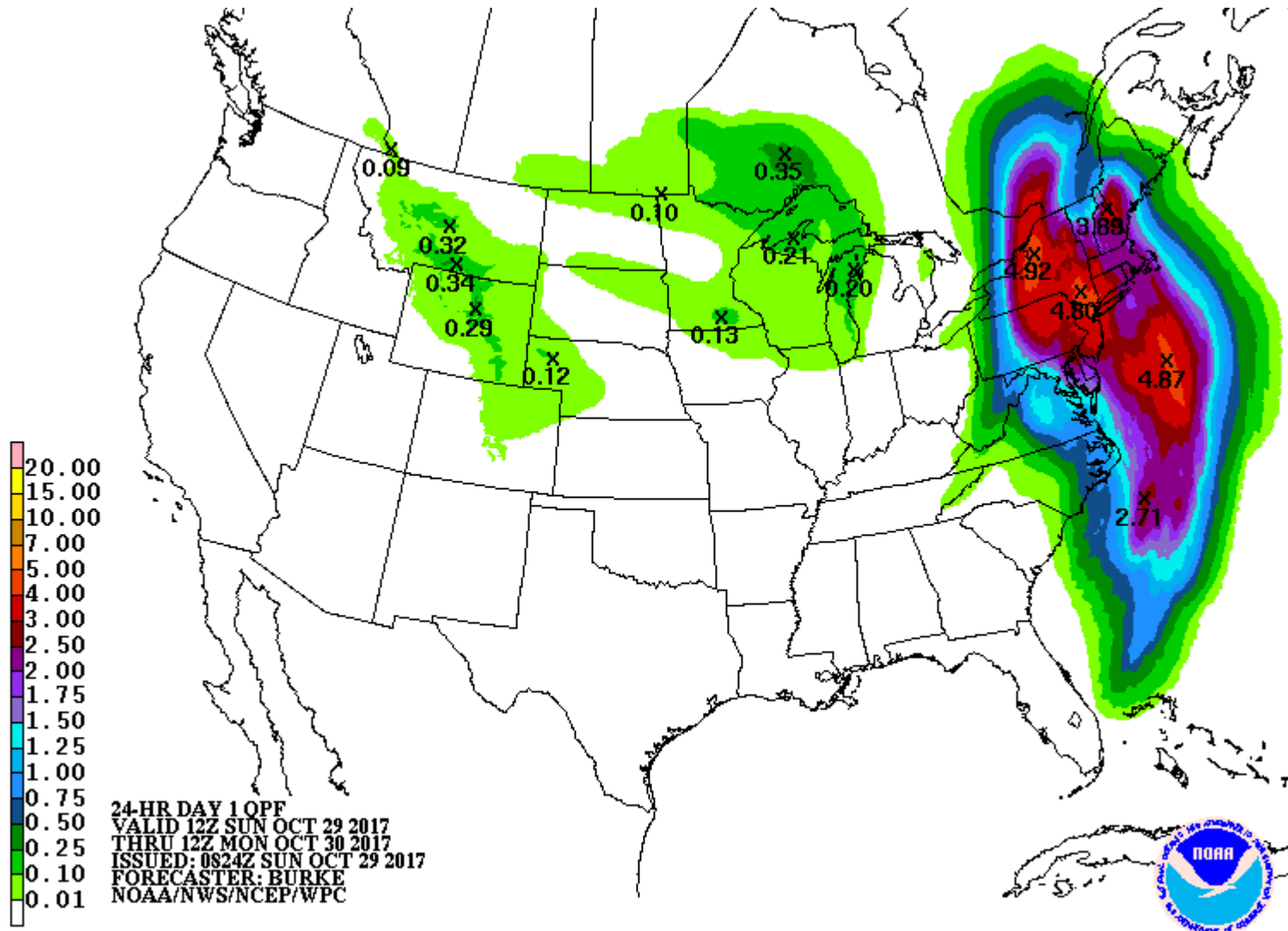
Display: Last Day (24hrs)

Inches

- 20
- 18
- 16
- 14
- 12
- 10
- 8.0
- 6.0
- 5.0
- 4.0
- 3.0
- 2.5
- 2.0
- 1.5
- 1.0
- 0.75
- 0.50
- 0.25
- 0.10
- 0.01

24 hour observed Rainfall,
Philippe, ending 800 AM EDT
Sunday, October 29, 2017





24 hour Forecast Rainfall 800 AM EDT Sunday to 800 AM EDT Monday, October 29, 2017