



FEMA

Daily Operations Briefing

July 7, 2012

As of 8:30 a.m. EDT

Significant Activity: July 6-7

Significant Events:

- Ohio Valley/Mid-Atlantic Severe Storms recovery
- Wildfires – Western US

Tropical Activity:

- Atlantic – No tropical cyclones expected next 48 hours
- Eastern Pacific – Hurricane Daniel; Area 1: HIGH (80%) chance
- Central Pacific – No tropical cyclones expected through Sunday evening

Significant Weather:

- Dangerous Heat Wave – Ohio Valley to East Coast
- Severe thunderstorms possible – Ohio to Mid-Atlantic
- Red Flag Warnings: ID
- Critical Fire Weather – None
- Space Weather: Past 24 hours – Strong, G1 & S1 storms and R3 radio blackouts; next 24 hours – Minor, R1 storms expected

Earthquake Activity: No significant activity

Disaster Declaration Activity:

- Major Disaster Declaration for Minnesota FEMA-4069-DR-MN

Severe Weather Recovery-Current Situation



FEMA

Power:

- 249,956 customers without power; down from 583,948 customers (peak: 4.1 million)

Communications:

- Significant gains in power restoration are supporting cell site restoration

Mass Care:

- Shelters: 30 open in 6 States with 313 occupants (*ESF-6; July 7, 1:00 a.m.*)
- 2 hospitals (WV) on intermittent generator power due to work issues associated with bringing hospitals back to commercial power
- 34 storm related fatalities: NJ (2); MD (11); VA (13); DC (1) ; OH (4); NC (3)

Private Sector:

- All major private sectors stores have reopened

Severe Weather Recovery - Region III



Region III

- RRCC at Level II
- RIII IMAT at WV EOC
- SLOs at WV & MD
- All emergency communications returned to normal operations

Maryland

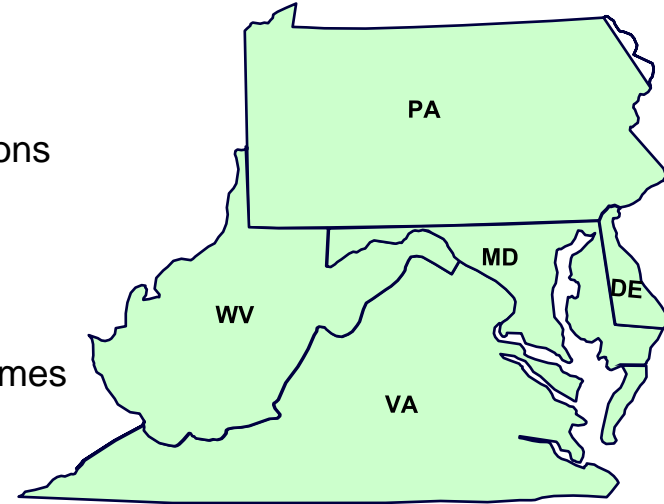
- Governor declared State of Emergency June 30
- State EOC at Level II (Enhanced Ops): will return to Full Activation at 8:00 a.m. EDT, today
- Commercial power restored to all hospitals and nursing homes

Virginia

- Governor declared State of Emergency June 30
- State EOC at Response Operations
- 7 Local/county emergency operations centers open

West Virginia

- FEMA-3345-EM-WV declared June 30
- Governor declared State of Emergency June 30
- State EOC at full activation
- FEMA Community Relations teams deployed to 18 counties



Severe Weather Recovery - Region V

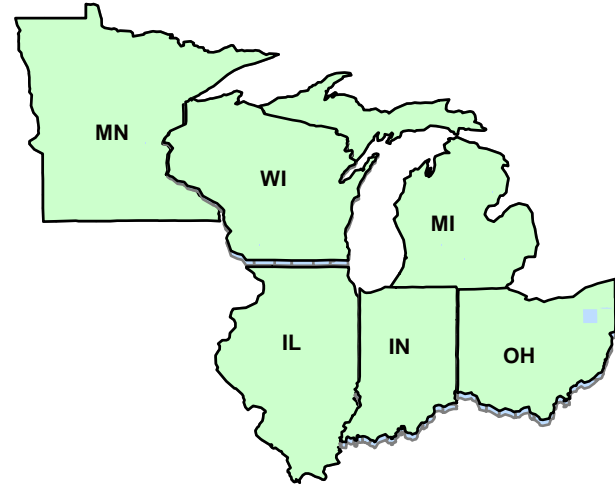


Region V

- RRCC returned to Watch/Steady State
- Region V IMAT & Forward Operating Branch (FOB) at OH SEOC
- 1 Region V Liaison Officer at OH SEOC
- 1 USACE Planning & Response Team in OH

Ohio

- FEMA-3346-EM-OH declared June 30
- Governor declared State of Emergency on June 30
- Ohio State EOC at partial activation
- Recovery operations will begin July 9



Ohio Valley & Mid-Atlantic Power Outages



FEMA

| Ohio Valley & Mid-Atlantic Customer Power Outages | | |
|---|-------|-----------------|
| As of 4:30 a.m. EDT Saturday, July 7, 2012 | | |
| Electric Utility | State | Latest Reported |
| Baltimore Gas & Electric (BGE) | MD | 12,411 |
| Pepco | MD | 1,894 |
| Potomac Edison (First Energy) | MD | 12 |
| Maryland Subtotal | | 14,317 |
| Atlantic City Electric | NJ | 2,142 |
| New Jersey Subtotal | | 2,142 |
| AEP Ohio | OH | 64,896 |
| South Central Power Company | OH | 299 |
| Ohio Rural Electric Cooperatives* | OH | 4,976 |
| Ohio Subtotal | | 70,171 |
| Appalachian Power (AEP) | VA | 34,788 |
| Dominion Virginia Power | VA | 1,260 |
| Virginia Subtotal | | 36,048 |
| Appalachian Power | WV | 77,183 |
| Allegheny Power (First Energy) | WV | 49,807 |
| AEP Ohio | WV | 288 |
| West Virginia Subtotal | | 127,278 |
| Total** | | 249,956 |
| *Not Including south Central Power Company ** Total outages represent only electric utilities listed in this table. | | |
| Energy Assurance daily, July 7, 2012 | | |

Severe Weather Recovery-Resource Status



FEMA

| FSA- Charleston, WV | | | | | | | |
|---------------------|------------------|------------------|------------------|-----------|------|-----------|--------------|
| | Water | Meals | Oxygen canisters | IAP Water | Gens | I/T Kits | DME/CMS Kits |
| Ordered | 4,270,110 Liters | 725,000 (29 TL) | 1,000 | | 110 | 20 (2 TL) | 2 (2 TLs) |
| Shipped | 2,606,400 Liters | 500,000 (20 TL) | 857 | | 97 | 20 (2 TL) | 2 (2 TL) |
| In Transit | None | 225,000 (13 TL) | | | | | 1 (1 TL) |
| Arrived | 2,606,400 liters | 450,000 (176 TL) | 857 | 50 | 97 | 10 (1 TL) | 1 (1 TL) |
| Issued | 1,728,000 Liters | 325,000 (TL) | 409 | 27 | 58 | 5 | |
| @ Site | 878,400 liters | 125,000 (TL) | 448 | 23 | 39 | 5 | 1 |

| FSA-Morgantown, WV | |
|--------------------|------------------------|
| | Water |
| Ordered | 925,600 liters (64 TL) |
| Shipped | 633,600 liters (44 TL) |
| In Transit | |
| Arrived | 633,600 liters (44 TL) |
| Issued | 590,400 liters (41 TL) |
| @ Site | 43,200 liters (3 TL) |

Severe Weather Recovery-Resource Status



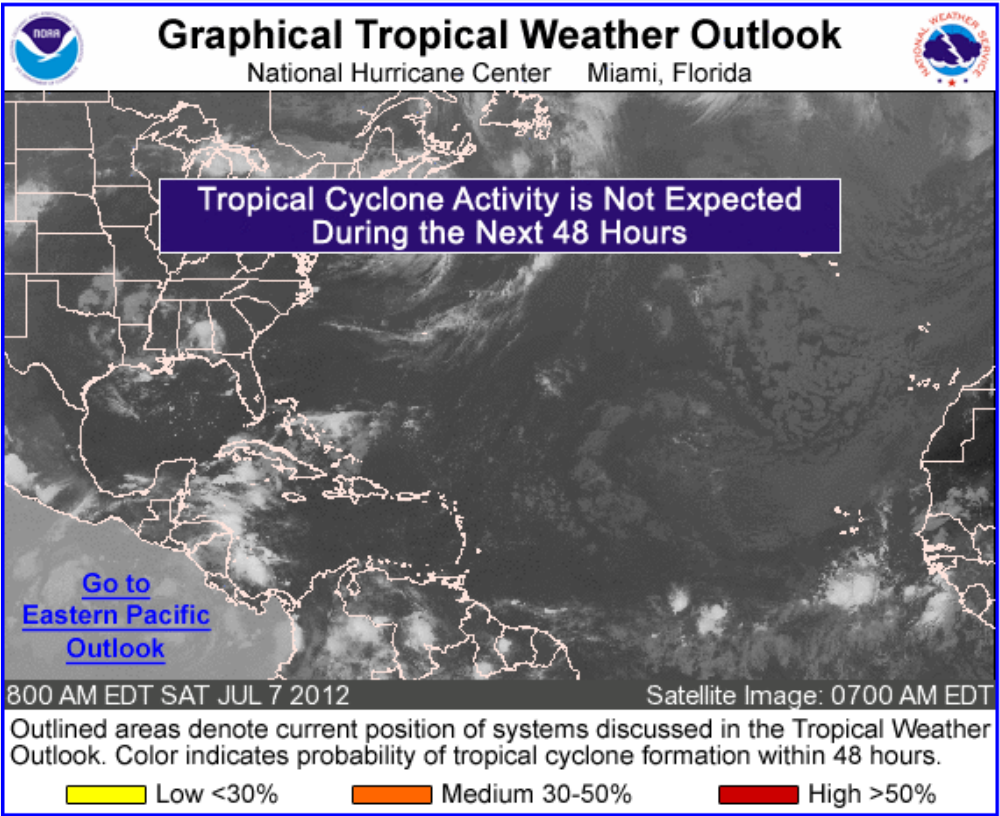
FEMA

| FSA- Columbus, OH | | | | | | | | | | |
|---|---------------------------|-------|------|----------|-------|----------|---------|----------|----------|----------|
| | Water | Meals | Cots | Blankets | Tarps | Sheeting | Gens | I/T Kits | DME Kits | CMS Kits |
| Ordered | 532,000 Liters/37 TL | 0 | 0 | 0 | 0 | 0 | 38 (ea) | 0 | 0 | 0 |
| Shipped | 532,000 Liters/37 TL | 0 | 0 | 0 | 0 | 0 | 38 | 0 | 0 | 0 |
| In Transit | 0 | 0 | 0 | 0 | 0 | 0 | | 0 | 0 | 0 |
| Arrived | 532,000 Liters/37 TL | 0 | 0 | 0 | 0 | 0 | 38 | 0 | 0 | 0 |
| Issued | 182,000 Liters/11 TL** | 0 | 0 | 0 | 0 | 0 | 0 | 0 | 0 | 0 |
| Address for ISB: Defense Supply Support Center (DLA) 3990 E. Broad St, Columbus, OH 43218 | | | | | | | | | | |

Atlantic – Tropical Outlook



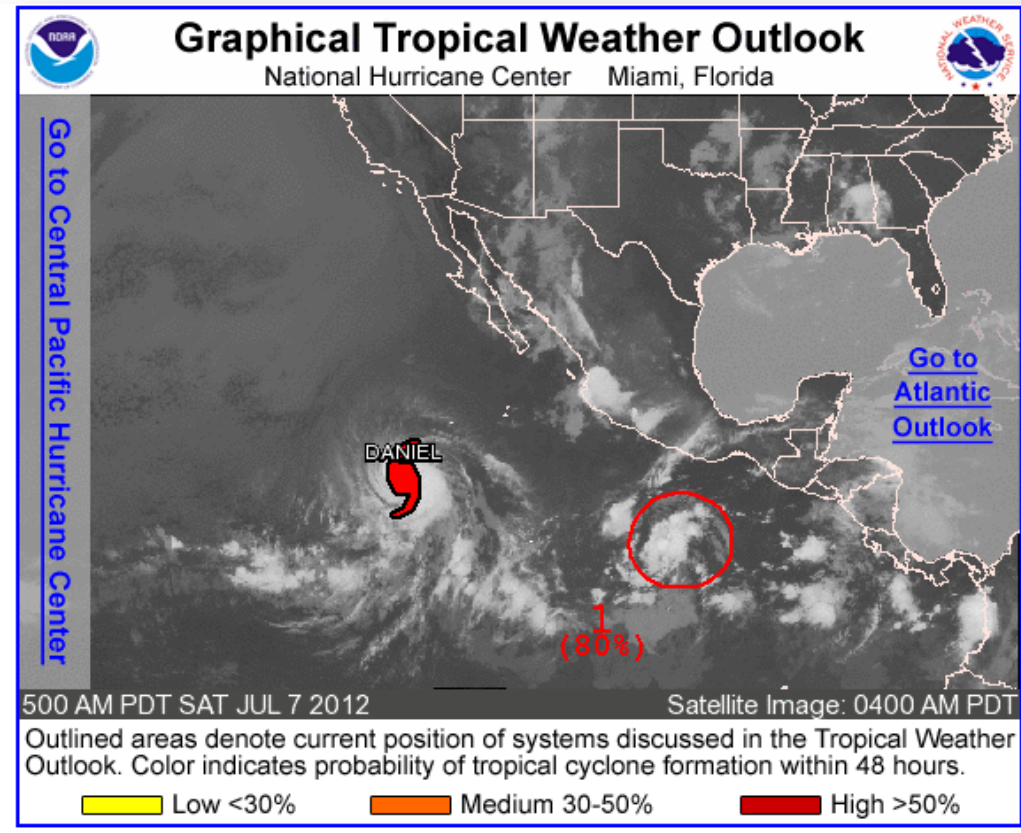
FEMA



Eastern Pacific – Tropical Outlook



FEMA

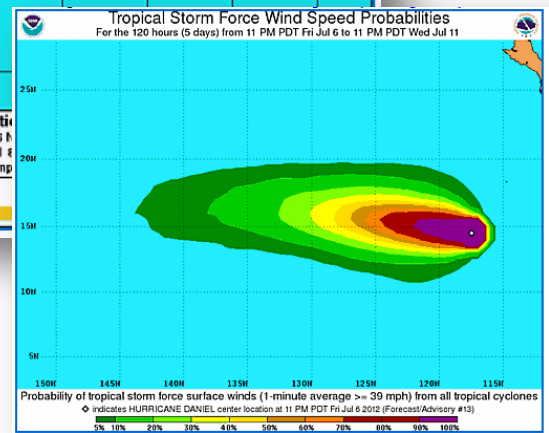
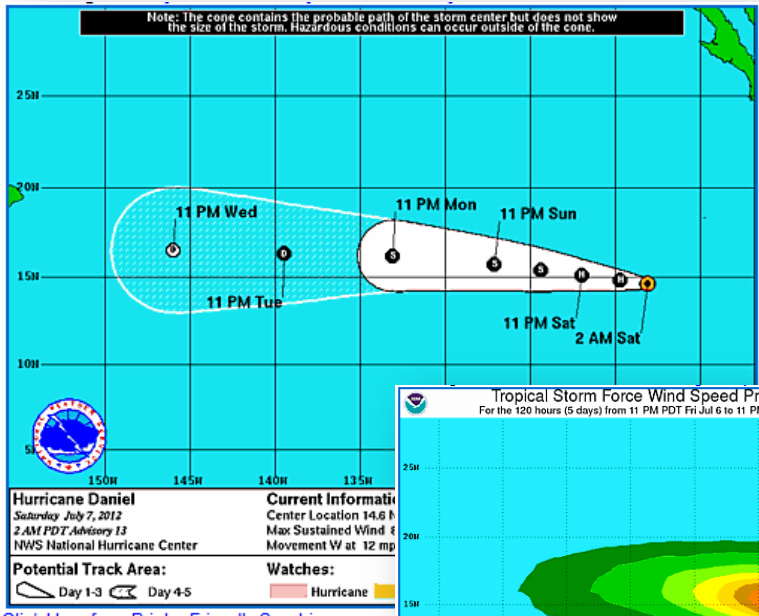




Eastern Pacific – Hurricane Daniel

As of 5:00 a.m. EDT

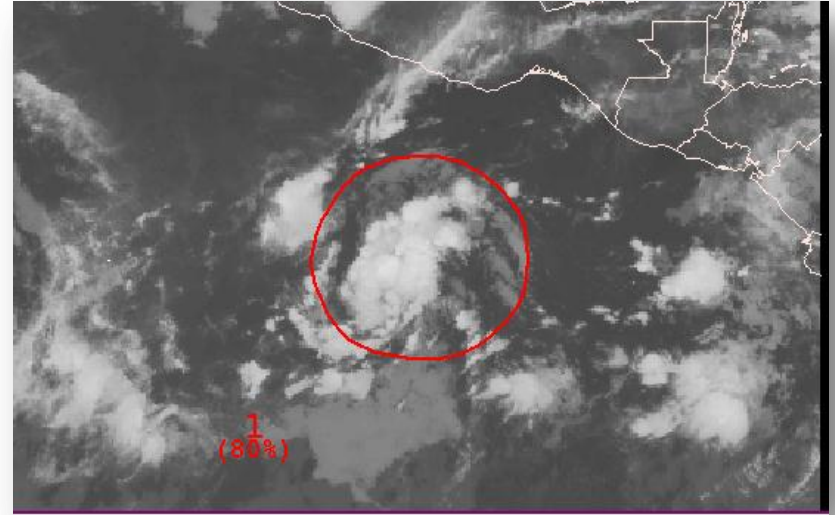
- 785 miles SW of southern tip of Baja California, MX
- Moving W at 12 mph
- This motion with slight increase in forward speed next 24-48 hrs
- Max sustained winds 80 mph with higher gusts
- Now Category One Hurricane
- Additional strengthening possible today
- Should weaken by Sun as it moves over colder water
- Hurricane Force Winds extend 25 miles; tropical storm force winds extend 105 miles



Eastern Pacific – Area 1

As of 8:00 a.m. EDT

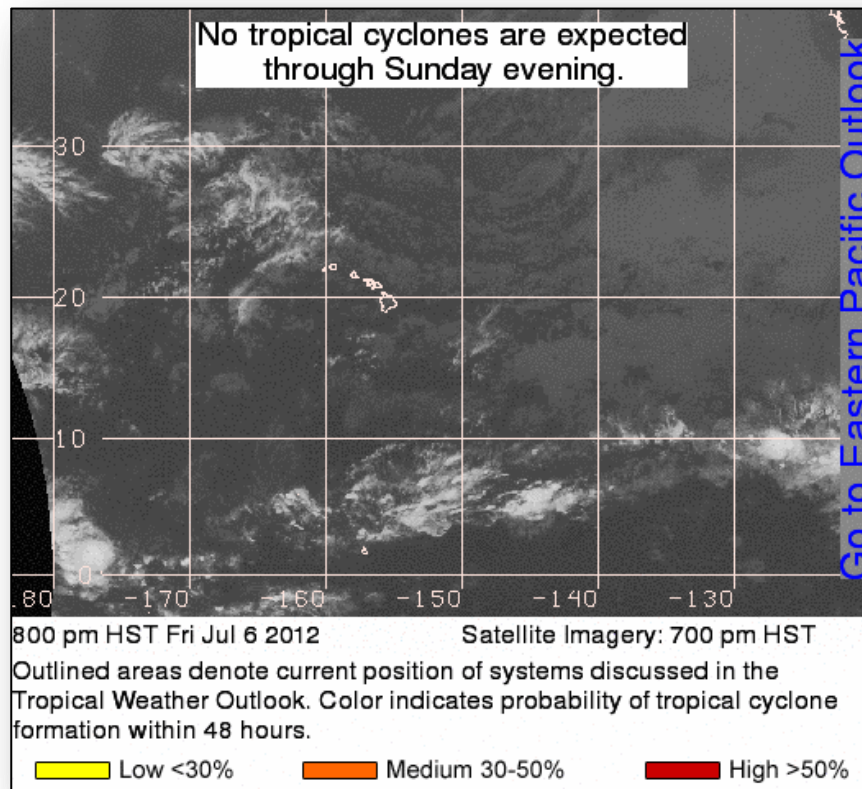
- Low pressure system 500 miles SSE of Acapulco, MX
- Environmental conditions conducive for tropical depression to form next 24-48 hrs
- Moving WNW at 15 mph
- HIGH chance (80%) of becoming tropical cyclone next 48 hours



Central Pacific – Tropical Outlook



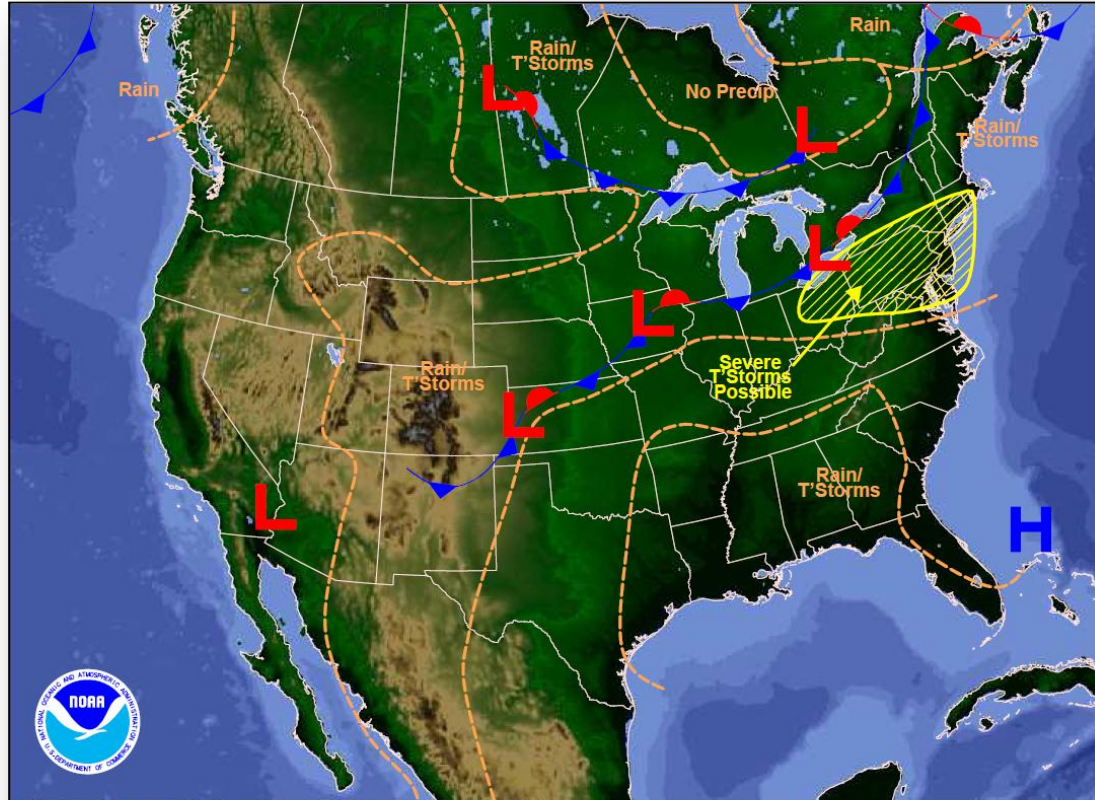
FEMA



National Weather Forecast



FEMA

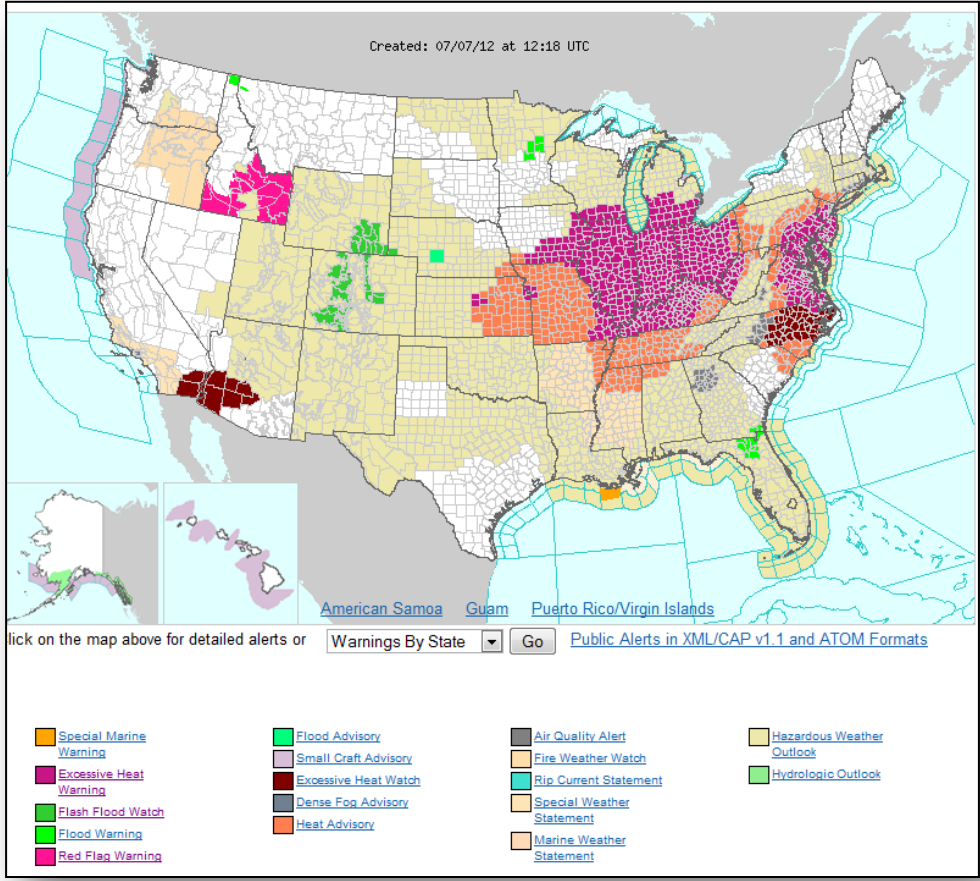


Weather Forecast for Sat, Jul 07, 2012, issued 4:45 AM EDT
DOC/NOAA/NWS/NCEP/Hydrometeorological Prediction Center
Prepared by Krekeiler based on HPC, SPC, and NHC forecasts

Active Watches/Warnings



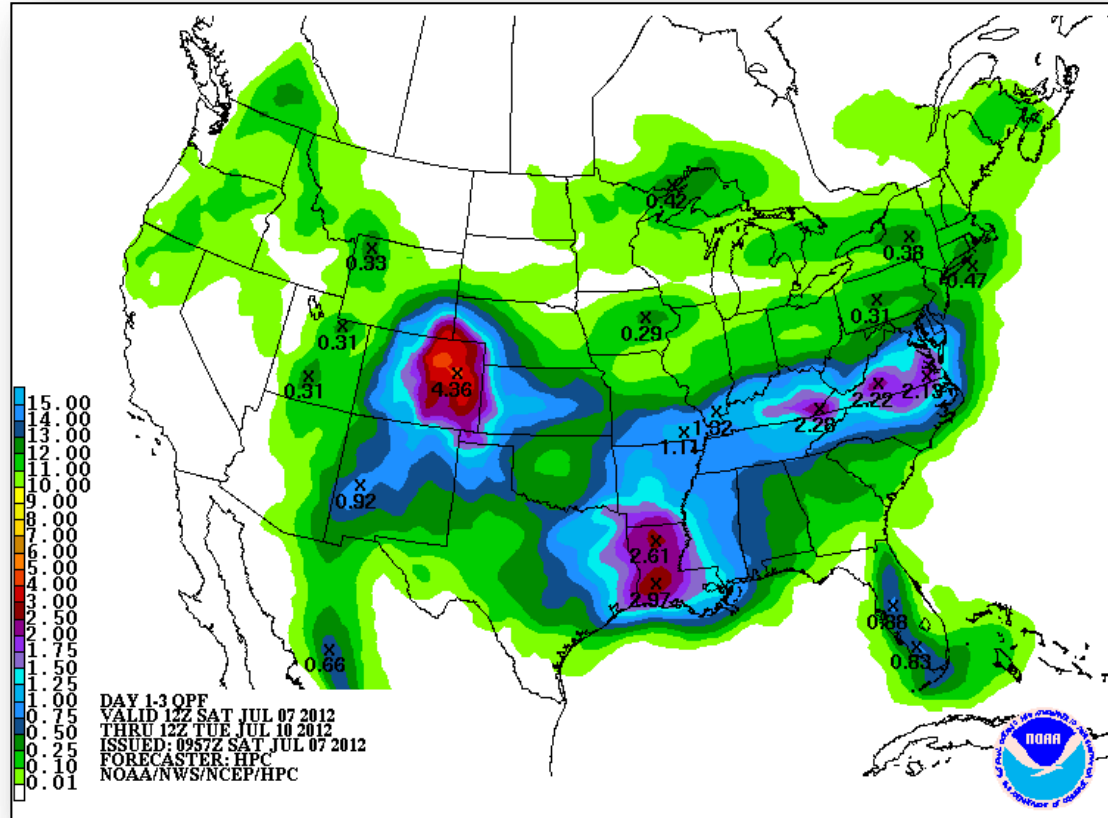
FEMA



Precipitation Forecast 1 – 3 Day



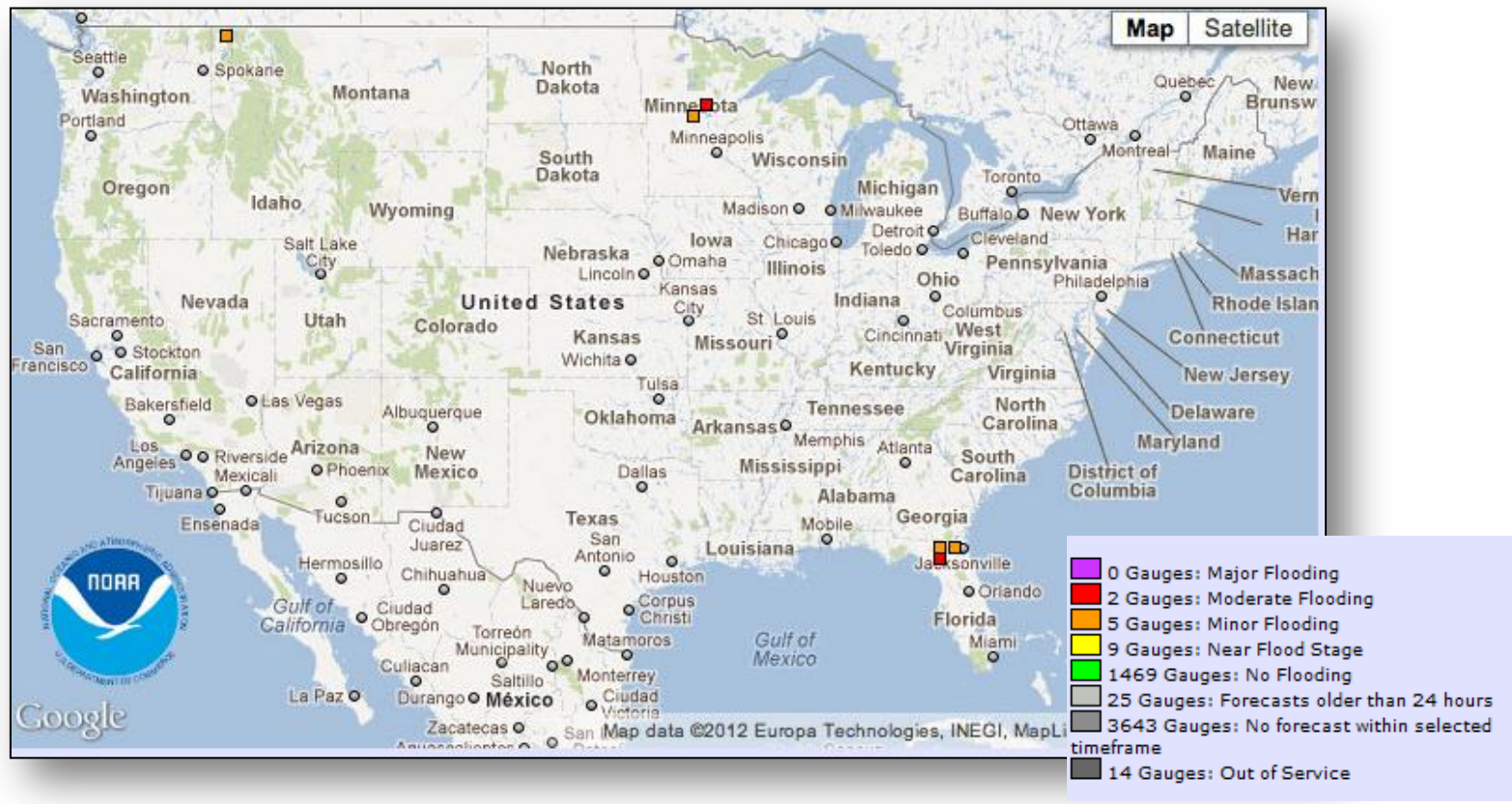
FEMA



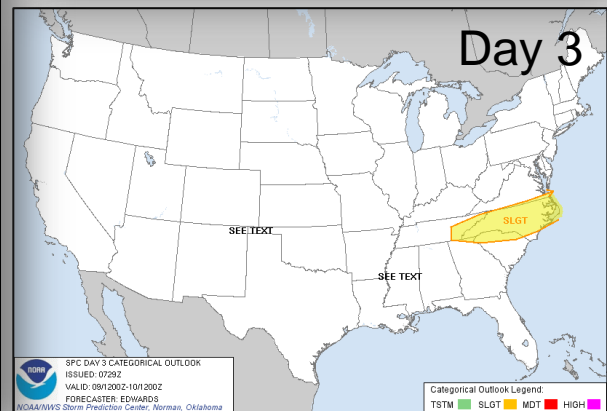
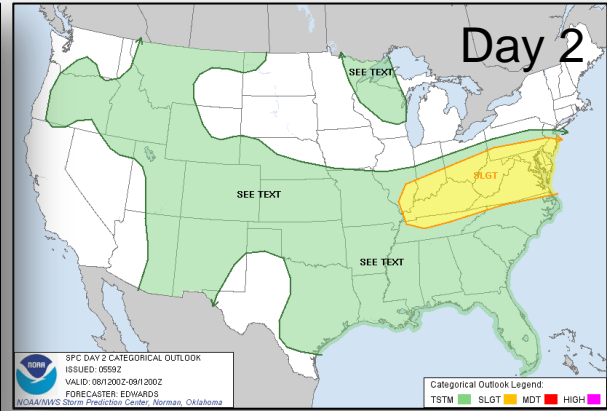
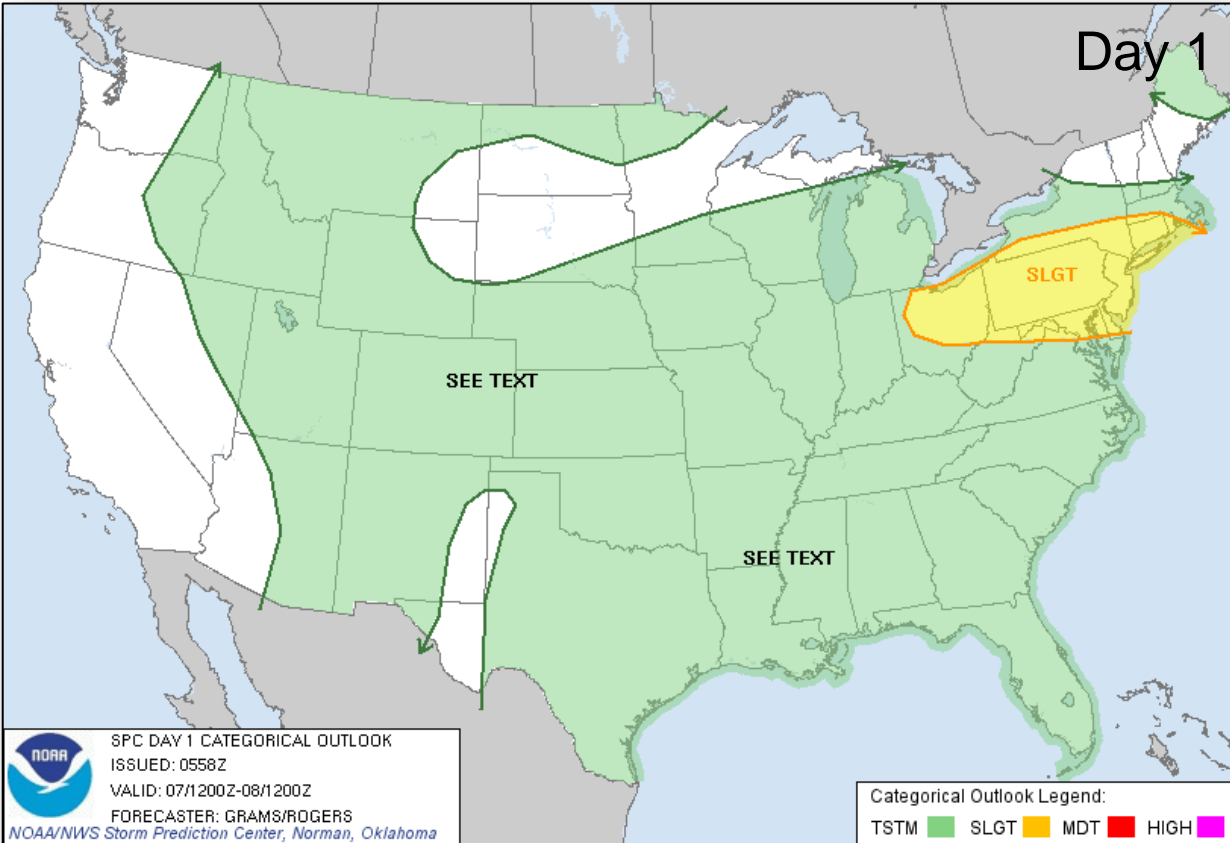
River Flood Outlook – 7 Day



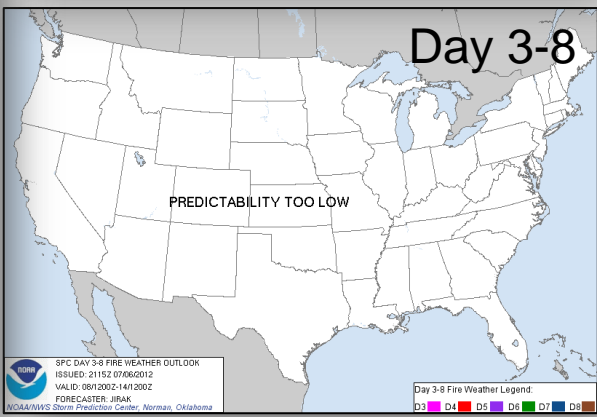
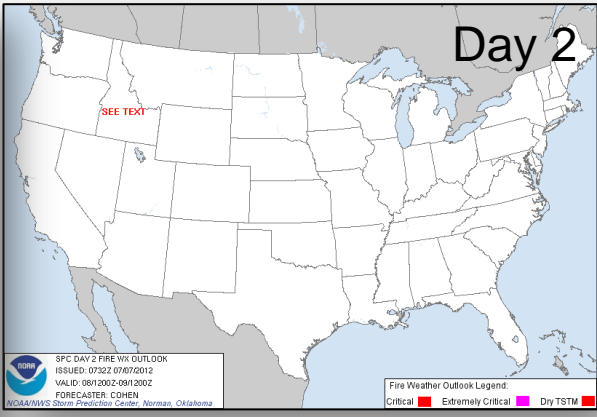
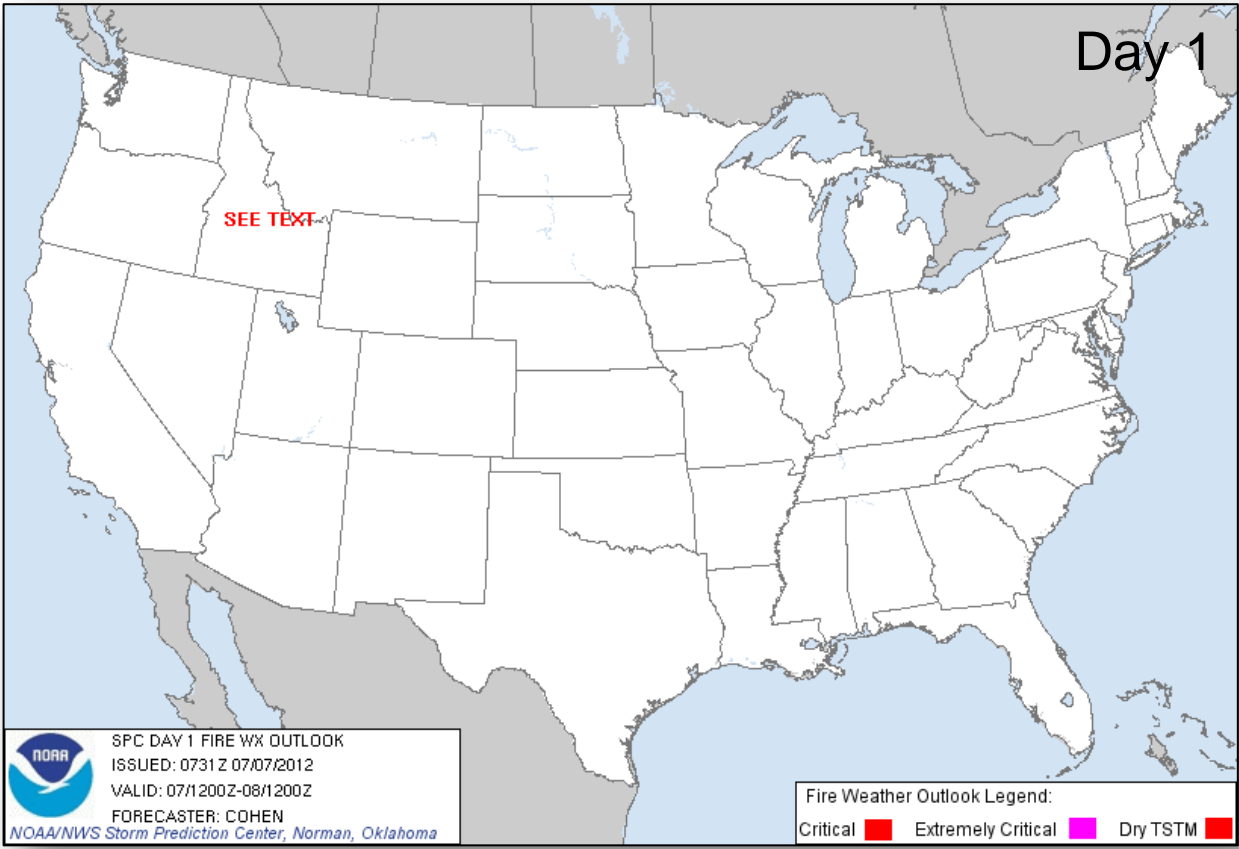
FEMA



Convective Outlook Days 1 - 3

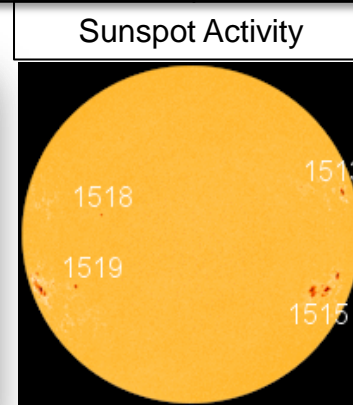
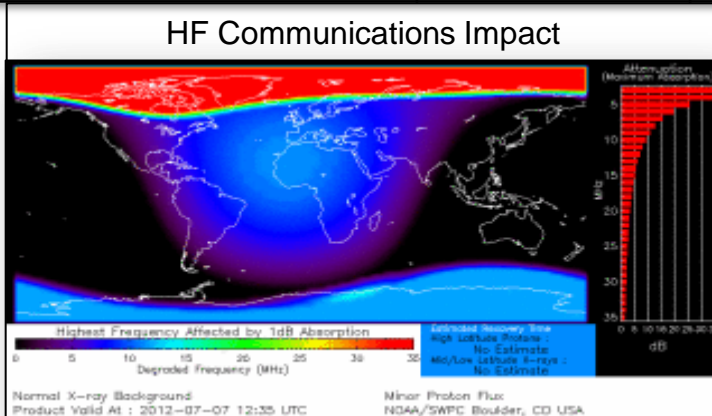


Critical Fire Weather Areas Days 1 - 8

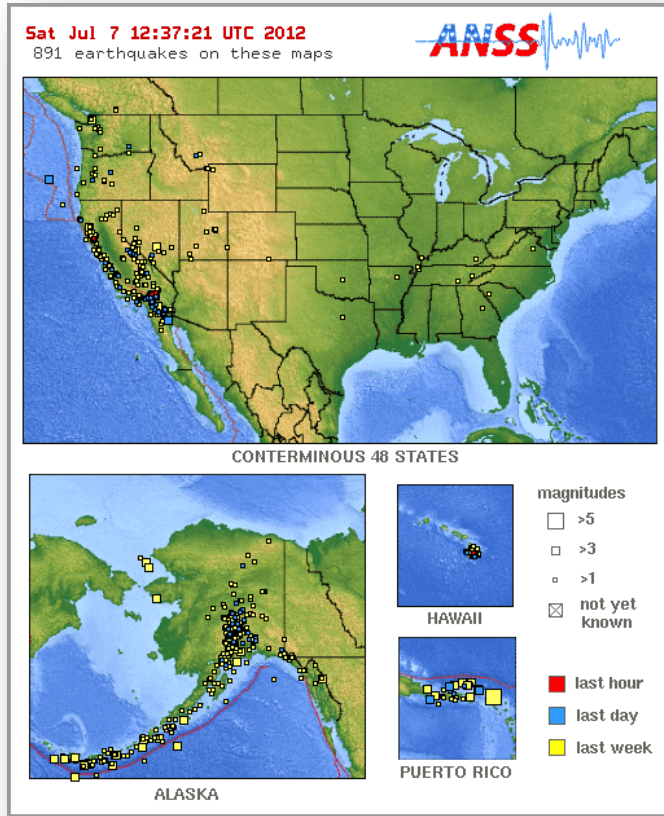


Space Weather

| NOAA Scales Activity Range 1 (minor) to 5 (extreme) | Past 24 Hours | Current | Next 24 Hours |
|--|---------------|---------|---------------|
| Geomagnetic Storms | G1 | None | None |
| Solar Radiation Storms | S1 | S1 | S1 |
| Radio Blackouts | R3 | None | R1 |
| Space Weather | Strong | Minor | Minor |



Significant Earthquake Activity



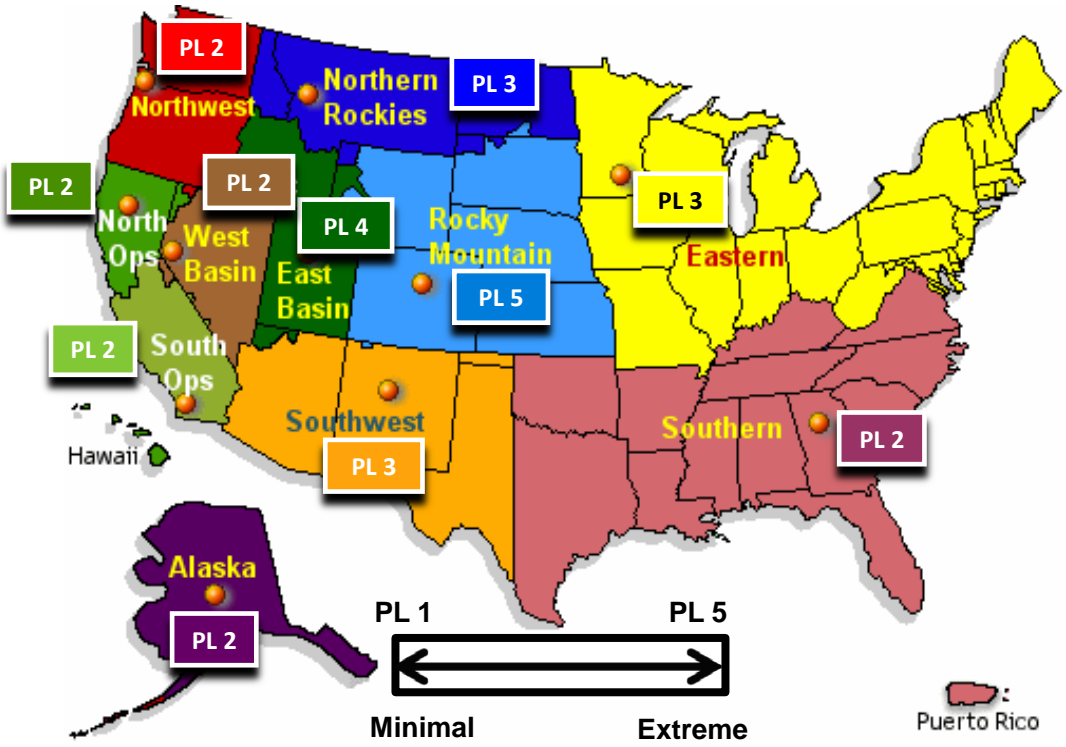
- No significant activity

U.S. Wildland Fire Preparedness Levels



National Preparedness Level: 4

Three or more Geographic Areas are experiencing incidents requiring Type 1 and 2 IMTS. Competition exists between Geographic Areas. Nationally, 60 percent of Type 1 and 2 IMTs and crews are committed.

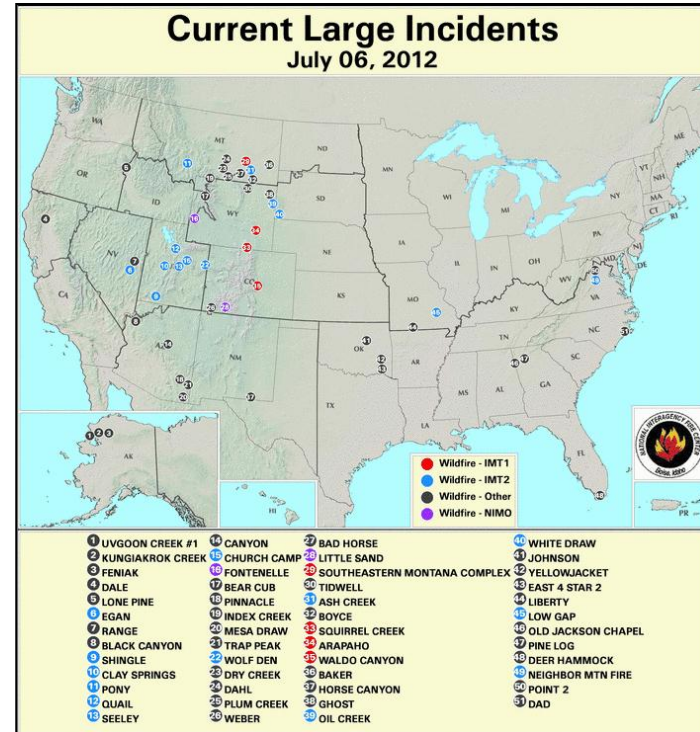


As of July 6, 2012

National Fire Activity

July 7, 2012:

- National Preparedness Level: 4
- Initial Attack Activity: Moderate (279)
- New Large Fires: 9
- Large Fires Contained: 13
- Uncontained Large Fires: 38
- NIMOs Committed: 2
- Type 1 IMT(s) Committed: 4
- Type 2 IMT(s) Committed: 12
- States Affected: ID, WY, UT, CO, SD, MT, NM, AZ, VA, FL, GA, TX, AR, MS, AL, NC, OK, NV, CA, MO & AK



Western Wildfire Summary



| Fire Name | FMAG # | Acres burned | % Contained | Evacs | Threatened Homes/Other | Destroyed | Fatalities / Injuries |
|-------------------|------------|-----------------|-------------|-------|------------------------|-----------|-----------------------|
| Montana (2) | | | | | | | |
| Ash Creek Complex | FM-2989-MT | 248,600 | 75% (+5) | YES | 60/35 | 38 | 0 / 0 |
| Pony | No Request | 5,157 (+357) | 75% (+15) | YES | 80/0 | 7 | 0 / 0 |
| Utah (2) | | | | | | | |
| Shingle | FM-2994-UT | 8,200 | 40% (+15) | YES | 551 | 1 | 0 / 0 |
| Seeley | No Request | 47,930(-869) | 38% (+17) | YES | 250/515 | 0 | 0 / 0 |
| Wyoming (4) | | | | | | | |
| Oil Creek | FM-2995-WY | 62,017(+1,293) | 60% (+10) | YES | 500/500 | 1 | 0 / 1 |
| Arapaho | FM-2992-WY | 97,443(+2,292) | 65%(+20) | YES | 0/570 | 40 | 0 / 1 |
| Fontenelle | No Request | 59,346 (+2,022) | 45% (+20) | NO | 0/100 | 0 | 0 / 0 |
| Squirrel Creek | FM-2993-WY | 10,921 (-221) | 75% (+20) | YES | 0/50 | 4 | 0 / 0 |

Western Fires – Region VIII



Region VIII

- RRCC at Level III
- National IMAT Blue at Regional RRCC
- RVIII IMAT at CO EOC
- RVIII LNO at MT EOC

FMAGs approved

- FEMA-2989-FM-MT (FMAG approved June 24)
- FEMA-2992-FM-WY (FMAG approved June 29)
- FEMA-2993-FM-WY (FMAG approved July 1)
- FEMA-2994-FM-UT (FMAG approved July 2)

Wyoming

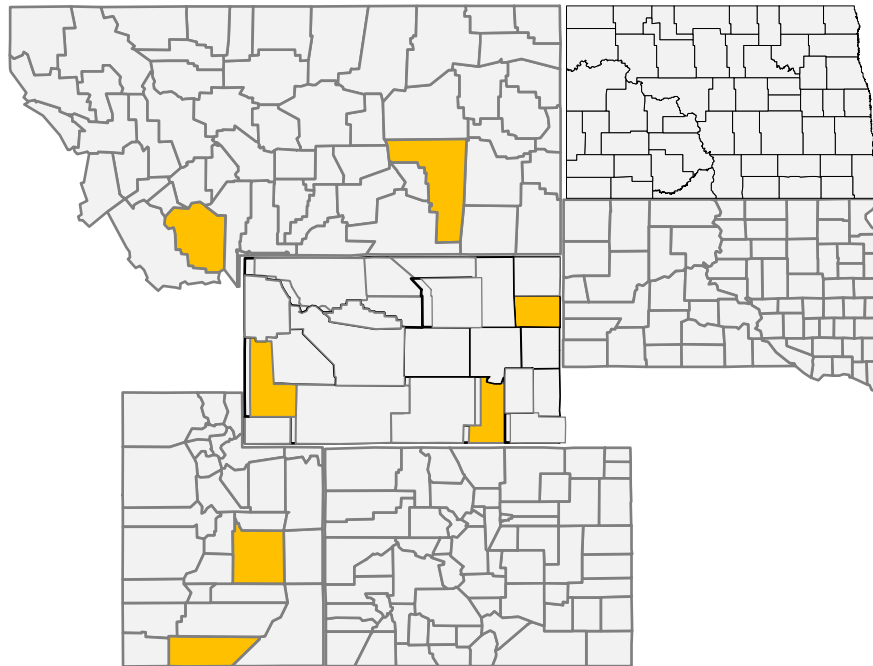
- State EOC at Level II (Partial Activation)

Utah

- State EOC at Level II (Partial Activation)

Montana

- State EOC at Level III (Partial Activation)



Disaster Requests & Declarations



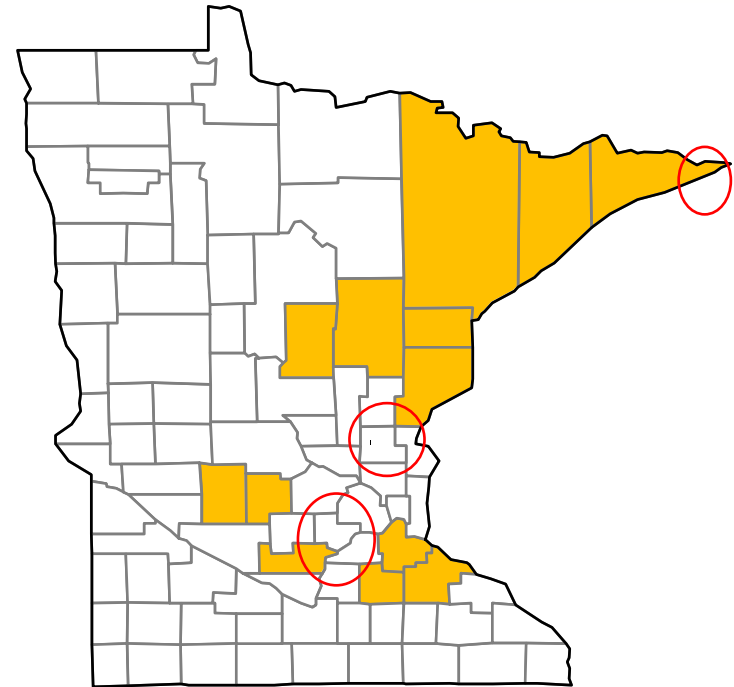
| Declaration Requests in Process | | Requests APPROVED (since last report) | Requests DENIED (since last report) |
|------------------------------------|----------------|--|--|
| 1 | Date Requested | 1 | 1 |
| MN – DR Severe Storms and Flooding | June 29, 2012 | Declared July 6, 2012 | |
| FL – DR Severe Storms and Flooding | June 30, 2012 | | Denied July 6, 2012 |
| DC – EM Severe Storms | July 1, 2012 | | |

Major Disaster Declaration- Minnesota



July 6, 2012

- Major Disaster Declaration for State of Minnesota
- For Severe Storms and Flooding June 14-21, 2012
- Public Assistance for 13 counties and 3 Tribes
- Hazard Mitigation statewide
- FCO is Mark A. Neveau



FMAG Requests and Declarations



| Action (since last report) | Total | FMAG No. and State |
|---------------------------------|-------|------------------------|
| Requests DENIED | 0 | |
| Requests APPROVED | 0 | |
| Requests Expected Next 24 Hours | 0 | None as of 1200 7/6/12 |

| As of July 6, 2012 | 2012 | 2011* |
|---|------|-------|
| FMAGs Approved | 22 | 77 |
| FMAGs Denied | 12 | 26 |
| * Cumulative FMAG figures as of this date in 2011 | | |

FCO Cadre Member Status



| Deployed | Detailed | Available | Not Available | Total |
|----------|----------|-----------|---------------|-------|
| 14 | 1 | 19 | 2 | 36 |

| Total Available | Type 1 | Type 2 | Type 3 | Type 4 |
|-----------------|--------|--------|--------|--------|
| 22* | 3* | 12 | 5 | 2 |

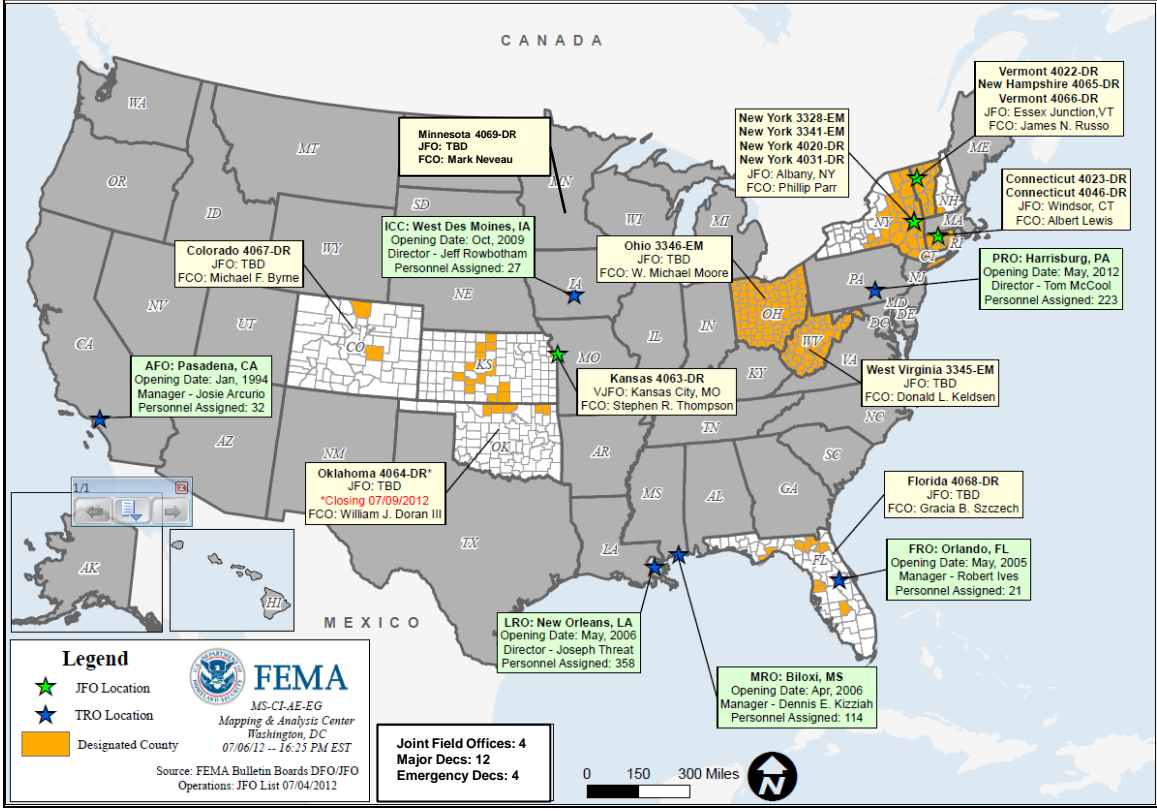
* All Type 1 FCOs are available unless deployed to a Level 1 event

As of: 07/06/12

Open Field Offices as of July 7, 2012



FEMA



Joint Preliminary Damage Assessments



| Region | State | Event | IA/ PA | Number of Counties/Tribes | | | Begin / End |
|--------|-------|---------------------|-----------|---------------------------|---------|----------|-------------------------|
| | | | | Requested | Ongoing | Complete | |
| II | NJ | Severe Weather | IA | 4 (+2) | 4 (+2) | 0 | Began: 7/5 End: TBD |
| | | | PA | 3 | 1 | 2 | Began: 7/5 End: TBD |
| IV | GA | Flooding – TS Debby | IA | 2 | 2 | 0 | Began 7/6 End: TBD |
| IV | FL | Flooding – TS Debby | IA | 22 (+2) | 4 | 18 | Began 6/29 End: TBD |
| | | | PA | 34 (-3) | 12 (+1) | 13 | Began 6/29 End: TBD |
| V | MN | Flooding | IA | 5 Counties/ 1 Tribe | 0 | 0 | Begin: 7/11 End: TBD |
| V | WI | Flooding | PA | 4 Counties/ 1 Tribe | 0 | 0 | Begin: 7/17 End: TBD |

MCOV Fleet / Deployment Status



FEMA

| MCOV FLEET STATUS | | | | | |
|---|----------------|---------------|--------------------|----------|----------|
| Location | Units Assigned | Available FMC | Deployed Committed | PMC | NMC |
| DC Atlanta | 21 | 16 | 5 | | |
| DC Cumberland | 10 | 7 | 3 | | |
| DC Ft Worth | 15 | 15 | | | |
| DC Moffett | 6 | 6 | | | |
| Holliston, MA | 1 | 1 | | | |
| Denver, CO | 2 | 2 | | | |
| Bothell, WA | 2 | 2 | | | |
| | | | | | |
| TOTAL | 57 | 49 | 8 | 0 | 0 |
| Included in above totals, units in route for turn-in. | | | | | |

| MCOV DISASTER SUPPORT DEPLOYMENTS | | | | | |
|-----------------------------------|----------|----------|-----------|--------------|-------------------|
| DR Number | OPCON | In Route | Unit Prep | Open Request | Notes: |
| R3-WV-3345 | 3 | | | | |
| R4-FL-4068 | 3 | | 2 | | RDD: 07/08 @ 1100 |
| | | | | | |
| | | | | | |
| | | | | | |
| | | | | | |
| | | | | | |
| | | | | | |
| | | | | | |
| TOTAL | 6 | 0 | 2 | 0 | |

| | |
|-----------------------------------|-----------|
| Fully Mission Capable | 57 |
| Partially Mission Capable* | 0 |
| Non-Mission Capable** | 0 |
| Total Non-Deployed | 49 |

Data as of: 07/05/12 @ 1600

IA Registration Statistics



Cumulative as of July 5, 2012 @ 1500

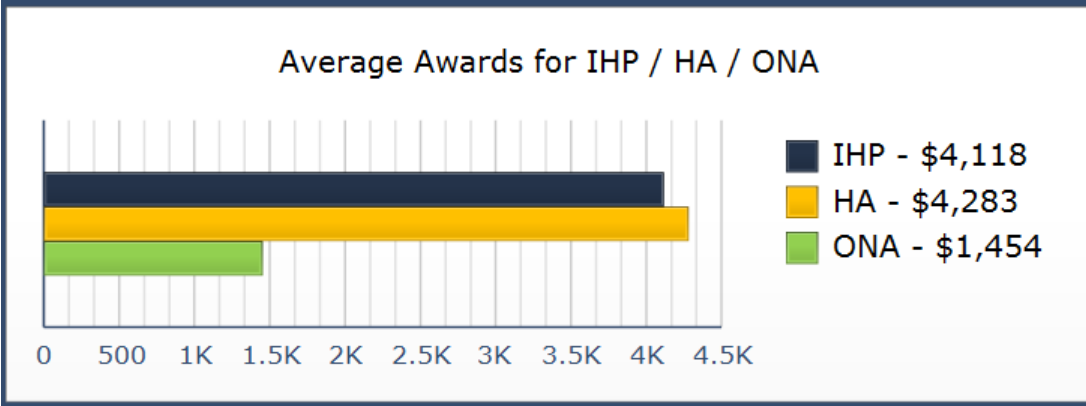
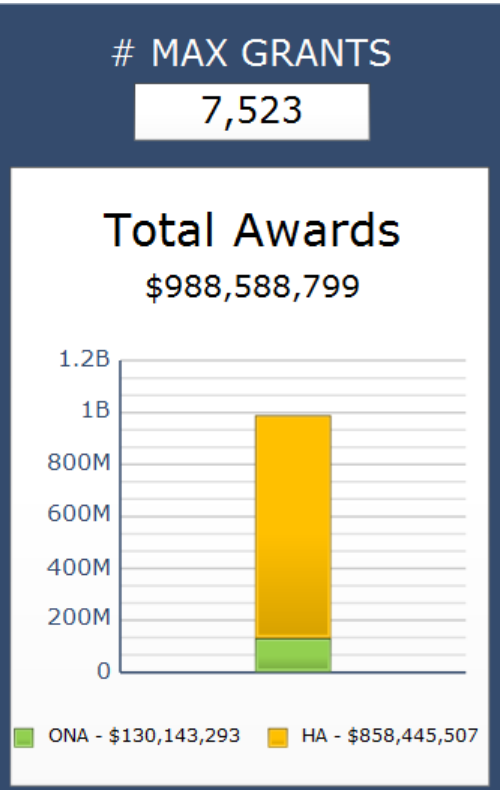
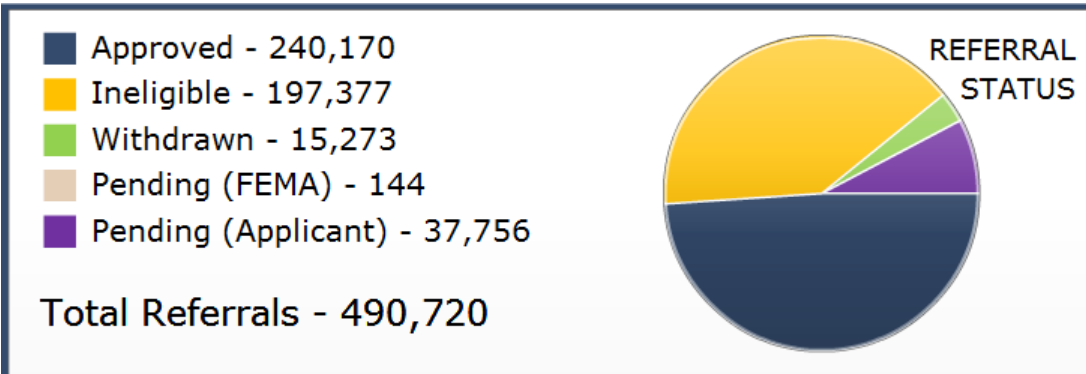
| DR # - State | Registrations | Approved Applicants | Total HA Approved | Total ONA Approved | Total IHP Approved |
|----------------|---------------|---------------------|-------------------|--------------------|--------------------|
| 4068 – FL | 1,325 | 84 | \$590,712 | \$32,617 | \$623,329 |
| Totals | 1,325 | 84 | \$590,712 | \$32,617 | \$623,329 |
| 24 hour change | +873 | +83 | +\$588,760 | +\$32,617 | +\$621,376 |

NPSC Call Data for July 4, 2012

| | |
|--|------------|
| Total NPSC Calls Answered (Helpline + Registration Intake) | 971 |
| Average time to answer call | 14 seconds |



IHP Referral Status & Awards



Data includes the 45 IHP Active DRs

Max Grants = Applicants awarded maximum IHP (\$30,200 as of FY2012)

Data as of: 07/05/12 @ 1500

Housing Inspection Statistics



| Data as of July 5, 2012 @ 1600 | | | | | |
|---------------------------------------|-------------------|-----------------------------|------------------------------|------------------------------|-------------------------------|
| DR # - State | Inspectors | Inspections Assigned | Inspections Completed | Inspection % Complete | Turnaround Time (Days) |
| 4068 – FL | 34 | 1,177 | 156 | 13.3% | 0.8 |
| TOTAL | 34 | 1,177 | 156 | 13.3% | 0.8 |
| 24 hour change | +6 | +743 | +152 | +12.3% | +0.6 |

* Only displaying inspectors for DRs that currently have open registration periods

IMAT Status



| National Teams | | | | | |
|----------------|--------|--------------------|--------|---------------|--------|
| Team | Status | Team | Status | Team | Status |
| BLUE (East) | CO | WHITE (Central) | | RED (West) | |
| Regional Teams | | | | | |
| Team | Status | Team | Status | Team | Status |
| Region I | VT | Region V | OH | Region IX-1 | |
| Region II | | Region VI-1 | | Region IX-2 | |
| Region III | WV | Region VI-2 | | Region X | |
| Region IV-1 | | Region VII | | | |
| Region IV-2 | FL | Region VIII | CO | | |

= Available/Mission Capable
 = Assigned/Deployed
 = Available/Partially Mission Capable
 = Out-of-Service

Urban Search & Rescue



| INCIDENT SUPPORT TEAMS (Red-White-Blue) – Monthly On Call Rotation | | | | | | | | | | | |
|--|-----------|--------|-----------|---------|-----------|--------|-----------|--------|-----------|--------|-------------------------|
| JAN | FEB | MAR | APR | MAY | JUN | JUL | AUG | SEP | OCT | NOV | DEC |
| WEST | | | | CENTRAL | | | | EAST | | | |
| Team | | Status | | Team | | Status | | Team | | Status | |
| CA-TF1 | Available | AZ-TF1 | Available | FL-TF1 | Available | CA-TF2 | Available | CO-TF1 | Available | FL-TF2 | Available |
| CA-TF3 | Available | IN-TF1 | Available | MA-TF1 | Available | CA-TF4 | Available | MO-TF1 | Available | MD-TF1 | Available |
| CA-TF5 | Available | NE-TF1 | Available | NY-TF1 | Available | CA-TF6 | Available | NM-TF1 | Available | PA-TF1 | Conditionally Available |
| CA-TF7 | Available | NV-TF1 | Available | VA-TF1 | Available | CA-TF8 | Available | TN-TF1 | Available | VA-TF2 | Available |
| WA-TF1 | Available | TX-TF1 | Available | OH-TF1 | Available | | | UT-TF1 | Available | | |

= Available/Mission Capable
 = Assigned/Deployed
 = Available/Partially Mission Capable
 = Out-of-Service

RRCC / Regional Watch Center Status



| Region | RRCC | Regional Watch Center |
|--------|---------------------------------------|-----------------------|
| I | Watch/Steady State | Maynard MOC (24/7) |
| II | Watch/Steady State | 24/7 |
| III | Level II (24/7) | 24/7 |
| IV | Watch/Steady State | 24/7 |
| V | Watch/Steady State | 24/7 |
| VI | Watch/Steady State | Denton MOC (24/7) |
| VII | Level III (7:00 a.m. – 7:00 p.m. CDT) | 24/7 |
| VIII | Level III (8:00 a.m. – 6:00 p.m. MDT) | Denver MOC (24/7) |
| IX | Watch/Steady State | 24/7 |
| X | Watch/Steady State | Bothell MOC (24/7) |

National Team Status



| Team/Status | Current Location | Remarks |
|-----------------------|---------------------------|---------------------|
| National Watch Center | Washington, DC | Enhanced Watch |
| NRCC | Washington, DC | Not Activated |
| HLT | Miami, FL | Activated |
| DEST | Washington, DC | Not Activated |
| Mission Capable | Partially Mission Capable | Not Mission Capable |



FEMA

FEMA's mission is to support our citizens and first responders to ensure that as a nation we work together to build, sustain, and improve our capability to prepare for, protect against, respond to, recover from, and mitigate all hazards.