



ROCKY MOUNTAIN AREA AND COORDINATION CENTER 2021 ANNUAL ACTIVITY REPORT



September 28th, 2021 on the Ptarmigan Fire near Silverthorne, Colorado. Photo by Jim Oberriter



Preface

Statistics used in the RMA report are gathered from the Fire and Aviation Management Integrated National Application Portal, <https://nap.nwcg.gov/NAP/>, which includes the Situation Report and Incident Status Summary (ICS-209) programs. Other sources also used in this document are previous Rocky Mountain Area Coordination Center (RMACC) annual reports, unit dispatch center annual reports, and agency specific local fire reports. The statistics given are intended to provide a Rocky Mountain Area wide perspective of annual fire activity but may not reflect official figures for a specific agency or represented dispatch office. Resource mobilization statistics used in this report were gathered from the Interagency Resource Ordering Capability System (IROC), which tracks tactical, logistical, service and support resources mobilized by the Rocky Mountain and National incident dispatch coordination system.

For agency-specific details or official numbers contact the individual agency or represented dispatch office.

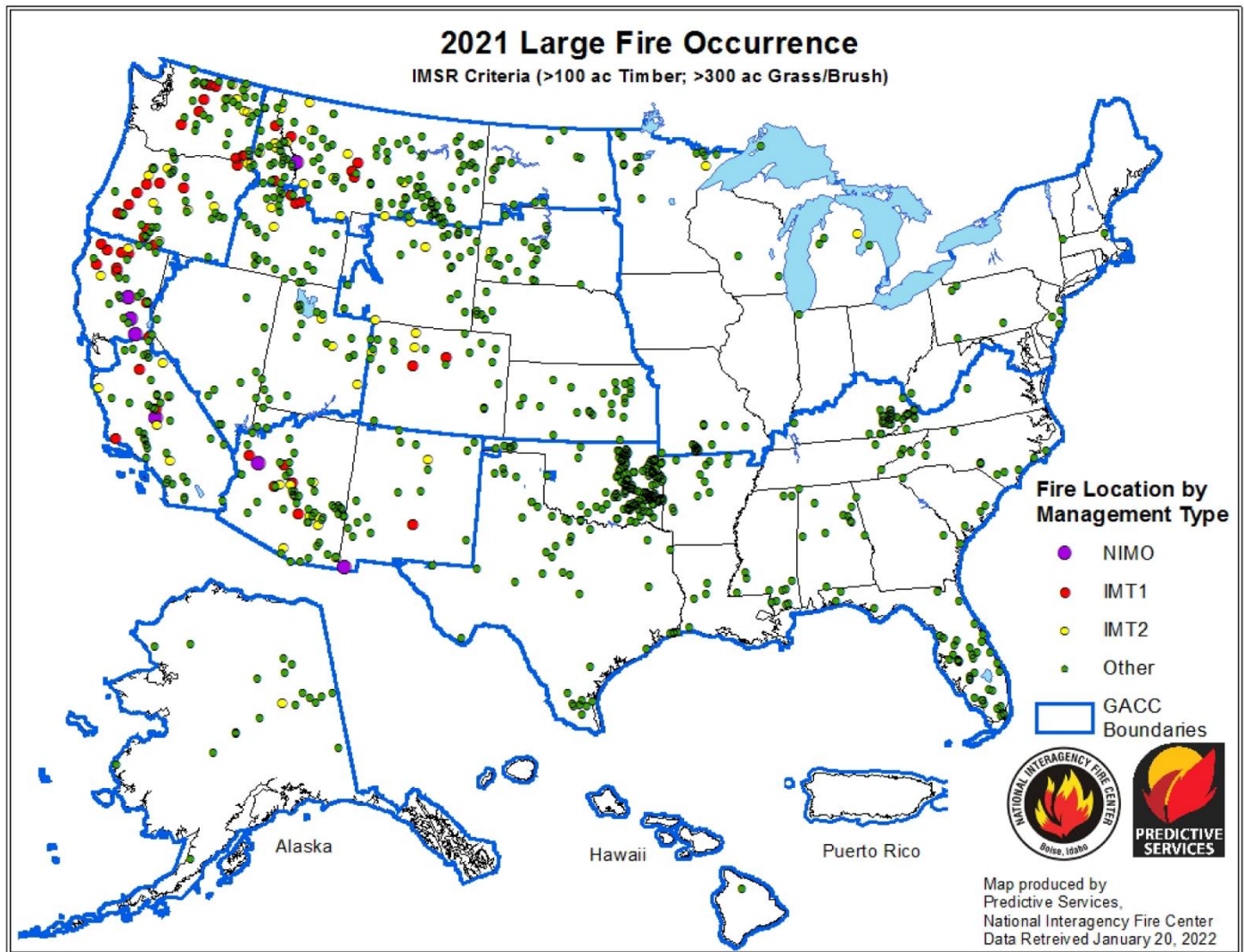


TABLE OF CONTENTS

	Page Number
Seasonal Narrative	3
Interagency Fire Statistics	4
<p>This section includes tables, graphs and charts of fires and acres burned by cause, by agency and by state during the 2021 season, as well as 5- and 10-year comparisons. The statistics in this report are taken from RMA Dispatch Center Annual Reports for Federal Agencies and from reports submitted to the USFS Region 2 Office, State and Private Forestry and Fire Staff by each of the 5 RMA states for State Agencies.</p>	
RMA Large Incident Summary	11
<p>This section includes tables and charts of all large incidents reported to the Rocky Mountain Coordination Center on an ICS-209.</p>	
Resources	17
<p>This section includes tables of resources processed by RMA dispatch centers during 2021, as well as a 5-year comparison.</p>	
Incident Management Teams	19
<p>This section includes a table of the 3 “home” RMA Incident Management Teams assignments and a table of all Incident Management Teams, Area Command Teams, and National Incident Management Organizations that visited the RMA on assignments during the 2021 season.</p>	
Aviation	21
<p>This section includes tables, charts and graphs of tactical aviation resource orders, RMA “home” contract Airtanker operations, and Airtanker and Reload base operations. These statistics were gathered by the Rocky Mountain Area Coordination Center and RMA Dispatch Centers.</p>	
Handcrews	24
<p>This section includes tables summarizing “home” RMA Type 1 handcrews’ assignments, “home” RMA Type 2 handcrews’ assignments, and the RMA assignments of “visiting” Type 1 and Type 2 and Type 2IA handcrews.</p>	
Appendix	
<p>This section includes tables of 10-year RMA fire statistics broken down by year and agency, 2021 RMA Large Incidents by State, and the 2021 RMA resource orders broken down by IROC category name.</p>	

SEASONAL NARRATIVE

On the heels of an historic, late fire season across southern Wyoming/northern Colorado in 2020, the late winter and spring months of 2021 became increasingly wet for areas along and east of the Divide, contrasting the precipitation deficits observed further west. Snowpack across the mountain areas west of the divide diminished earlier than normal with significant deficits in the lowest elevations. Exceptional drought remained west of the divide in Colorado while drought conditions generally improved east of the Continental Divide during the spring.

Above normal temperatures materialized in late spring and expanded through early summer over most the Rocky Mountain Area (RMA) before transitioning to an early onset monsoon pattern. Precipitation in June and July was most abundant across Colorado, Wyoming, and southern South Dakota. The active lightning pattern across the northern extent of the RMA was significant as it contributed to an abrupt spike in fire activity across the Bighorn Mountains and portions of Northeast Wyoming.

Nationally, fire activity increased significantly across the West during June. Most of the significant fire activity was in the Southwest, Colorado, Utah, and Montana through mid-June, with increasing fire activity across portions of California in mid to late June. The National Preparedness Level (PL) increased to 4 on June 22, the second earliest occurrence in PL history (i.e., since 1990, when PL record-keeping began). Also on June 22, the RMA increased its Preparedness Level to 3 as the Sylvan, Oil Springs, and West fires in Colorado became active and two Type 2 IMT's were assigned. By mid-July, the RMA's Preparedness Level has been lowered to 2.

Overall, the total of 15,113 fires across the RMA in 2021 was in keeping with historical patterns: 100 percent of the five-year average and 99 percent of the ten-year average. However, the 2021 total of 446,865 acres was only 54 percent of the RMA five-year average and 59 percent of its ten-year average.

Throughout 2021, the overall reduction in activity compared to 2020 allowed the RMA to supply much-needed resources to other regions, particularly large incidents in northern tier states. RMA Incident Management Teams (Type 1 and Type 2) spent 88 of 164 assignment days committed to out-of-area incidents in California, Idaho, Montana, Nevada, Oregon, and Washington. The seven Type 1 handcrews based in the RMA contributed 461 days on 61 national assignments, averaging 65.9 days per crew. Type 2 and Type 2IA crews from the RMA spent 221 days on 29 national assignments, averaging 7.6 days per incident.

In August, the influence of a La Niña climate signal created a north-to-south split in precipitation patterns and placed the RMA between high pressure ridging to our west and low pressure troughing to our east. The interface between the quasi-stationary high- and low-pressure systems resulted in a persistent northwesterly flow aloft and brought above normal precipitation to areas along and west of the Divide during the fall months.

However, the pattern supported a rain shadow effect east of the Rocky Mountains, limiting precipitation events over eastern Colorado and expanding severe drought conditions across the High Plains. Periods of stronger, warmer downslope winds created drier conditions and a dearth of snow across the lower elevations and plains, leaving fuels exposed well into December. Historic wind events in mid-late December led to significant fires in Kansas and along the Front Range of Colorado.

The Four County Fire in Russell County, KS that started on December 15 was the largest single wildfire in the RMA during 2021. The human-caused blaze burned a total of 121,622 acres and destroyed a total of 32 structures, including 10 single residences.

Rocky Mountain Area and Coordination Center 2021 Annual Report

INTERAGENCY FIRE STATISTICS: 2021 WILDLAND FIRE ACTIVITY BY CAUSE

The following table shows, by cause, the number of fires and acres burned for each of the agencies within the RMA. Federal and Non-federal are listed individually, and within each Federal agency the fire and acres are further broken down by the state in which the federal fire occurred. What this means is that a fire that occurred on BIA land in Colorado will **only** be listed in the BIA-CO row below; it will **not** be included in the States-CO row. State figures represent all Non-federal fires and acres in the respective states as reported to the USFS Regional Office's State and Private Forestry staff.

Agency	State	HUMAN		LIGHTNING		TOTAL	
		Fires	Acres	Fires	Acres	Fires	Acres
BIA	CO	13	17	98	1,078	111	1,095
	KS	17	1,261	0	0	17	1,261
	ND+	98	1,048	10	972	108	2,020
	NE	20	582	0	0	20	582
	SD+	557	8,404	44	666	601	9,070
	WY	56	93	2	23	58	116
TOTAL		761	11,405	154	2,739	915	14,144
BLM	CO	39	129	316	17,831	355	17,960
	SD	1	6	0	0	1	6
	WY	43	1,892	43	5,659	86	7,551
	TOTAL	83	2,027	359	23,490	442	25,517
FWS	CO	4	0	1	0	5	0
	KS	2	49	0	1,195	2	1,244
	ND+	0	0	0	0	0	0
	NE	2	22	1	0	3	22
	SD+	1	4	0	0	1	4
	WY	0	0	0	0	0	0
TOTAL	9	75	2	1,195	11	1,270	
NPS	CO	5	1	13	3	18	4
	KS	2	231	0	0	2	231
	MT+	1	0	2	0	3	0
	NE	0	0	0	0	0	0
	SD	3	137	4	811	7	948
	WY	0	0	0	0	0	0
TOTAL	11	369	19	814	30	1,183	
USFS	CO	125	419	130	3,921	255	4,340
	KS	0	0	0	0	0	0
	NE	6	2,580	18	476	24	3,056
	SD	33	182	63	78	96	260
	WY	27	8,774	40	18,483	67	27,257
TOTAL	191	11,955	251	22,958	442	34,913	
STATES	CO	5,607	16,054	328	16,603	5,935	32,657
	KS	4,312	17,779	165	168,157	4,477	185,936
	NE	806	31,304	131	9,197	937	40,501
	SD	949	79,596	34	780	983	80,376
	WY	735	19,585	206	10,783	941	30,368
TOTAL	12,409	164,318	864	205,520	13,273	369,838	
OTHER	CO	0	0	0	0	0	0
	KS	0	0	0	0	0	0
	NE	0	0	0	0	0	0
	SD	0	0	0	0	0	0
	WY	0	0	0	0	0	0
TOTAL	0	0	0	0	0	0	
RMA TOTAL		13,464	190,149	1,649	256,716	15,113	446,865

One BIA unit stretches from SD to ND and in this report, except for large fire information; fire figures are included in BIA SD numbers. There are also two FWS refuges that are located in ND with Bighorn Canyon NRA expanding from N. WY into MT (MT-BIP) are the responsibility of the RMA. Again, except for large fire information, in this report the numbers for these three units are included in FWS SD and NPS MT figures.

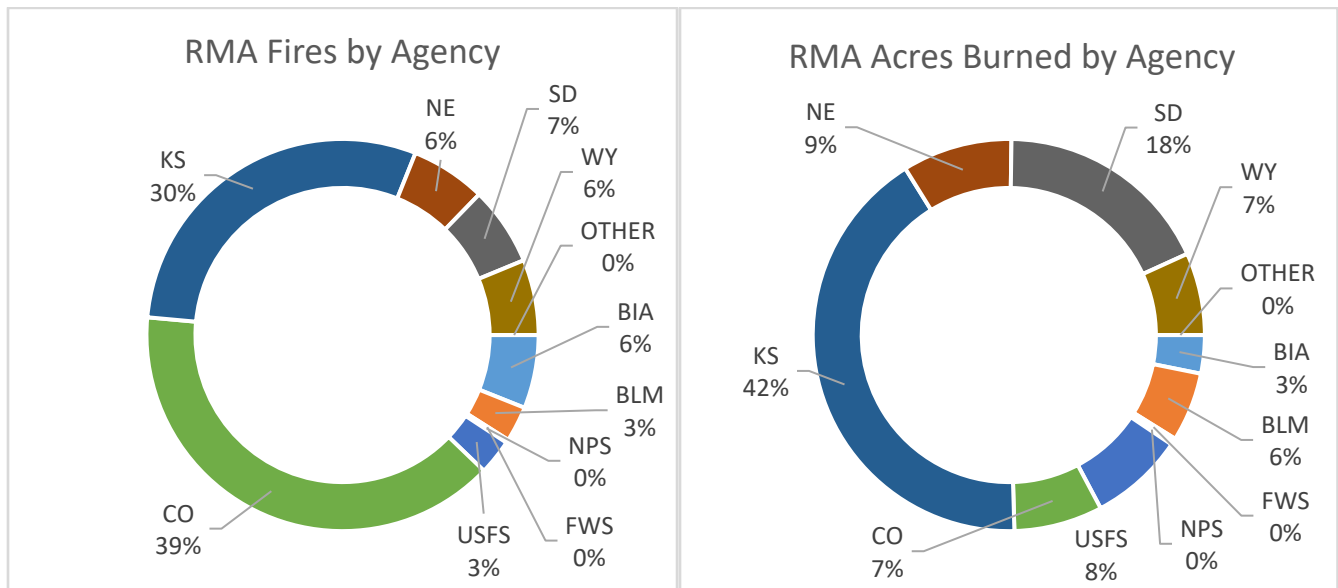
2021 WILDLAND FIRE ACTIVITY BY CAUSE AND BY INDIVIDUAL AGENCY WITHIN THE RMA

The following table shows, by cause, the number of fires and acres burned for each of the agencies within the RMA. Federal and Non-federal fires and acres are listed individually. What this means is that a fire that occurred on BIA land in Colorado will **only** be represented in the BIA row below; it will **not** be included in the Colorado row. The State figures represent all Non-federal fires and acres in the respective state as reported to the USFS Regional Office’s State and Private Forestry staff.

Agency Type	Agency	HUMAN		LIGHTNING		TOTAL	
		Fires	Acres	Fires	Acres	Fires	Acres
FEDERAL	BIA	761	11,405	154	2,739	915	14,144
	BLM	83	2,027	359	23,490	442	25,517
	FWS	9	75	2	1,195	11	1,270
	NPS	11	369	19	814	30	1,183
	USFS	191	11,955	251	22,958	442	34,913
STATE	CO	5,607	16,054	328	16,603	5,935	32,657
	KS	4,312	17,779	165	168,157	4,477	185,936
	NE	806	31,304	131	9,197	937	40,501
	SD	949	79,596	34	780	983	80,376
	WY	735	19,585	206	10,783	941	30,368
OTHER†		0	0	0	0	0	0
RMA TOTAL		13,464	190,149	1,649	256,716	15,113	446,865

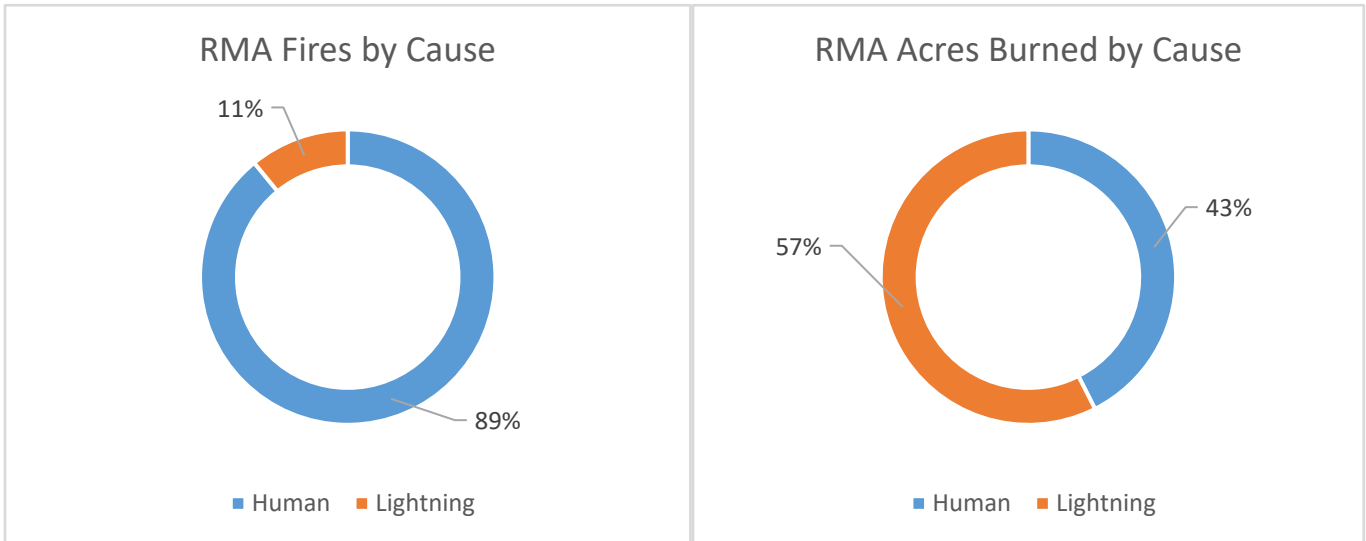
† Other includes all other federal agencies not listed above.

The two following pie charts illustrate the percent of fires and percent of acreage burned for each of the agencies within the RMA. Federal and Non-federal fires and acres are represented individually. What this means is that a fire that occurred on BIA land in Colorado will only be represented in the BIA pie slice below; it will not be included in the Colorado pie slice. The State percentages represent all Non-federal fires and acres in the respective state.

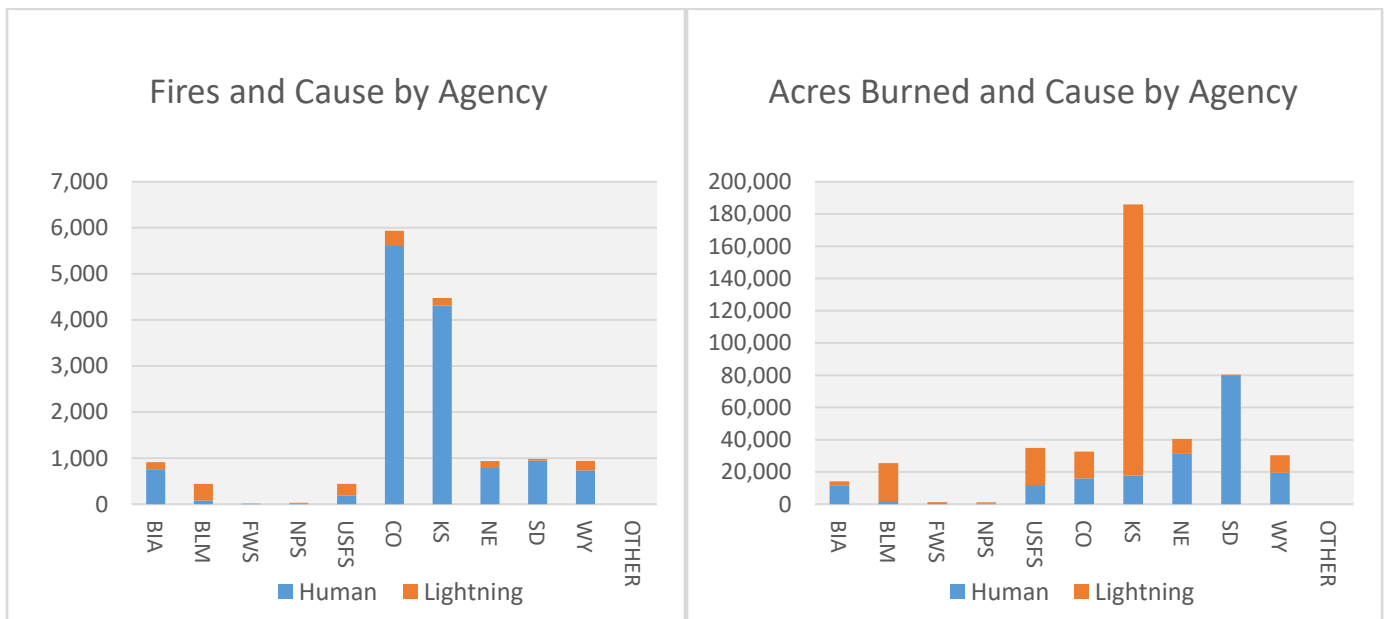


2021 WILDLAND FIRE ACTIVITY BY CAUSE AND BY CAUSE WITHIN EACH RMA AGENCY

The two following pie charts illustrate, by cause, the percentage of fires and the percentage of acres burned within the entire RMA. The pie charts include both Federal and Non-federal fires and acres in the cause percentages.



The two following bar graphs illustrate, by cause, the number of fires and acres burned for each of the agencies within the RMA. Federal and Non-federal fires and acres are represented individually. What this means is that a fire that occurred on BIA land in Colorado will **only** be represented in the BIA bar below; it will **not** be included in the Colorado bar. The State fires and acres represent all Non-federal fires and acres in the respective state as reported to the USFS Regional Office’s State and Private Forestry staff.

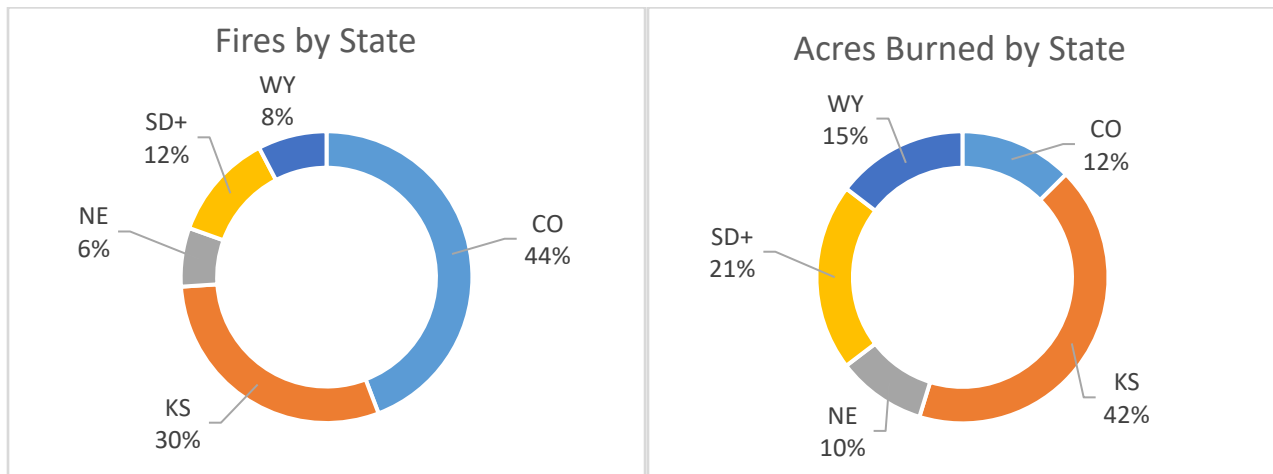


**2021 WILDLAND FIRE ACTIVITY BY CAUSE
COMBINED FEDERAL AND NON-FEDERAL AGENCIES WITHIN EACH STATE**

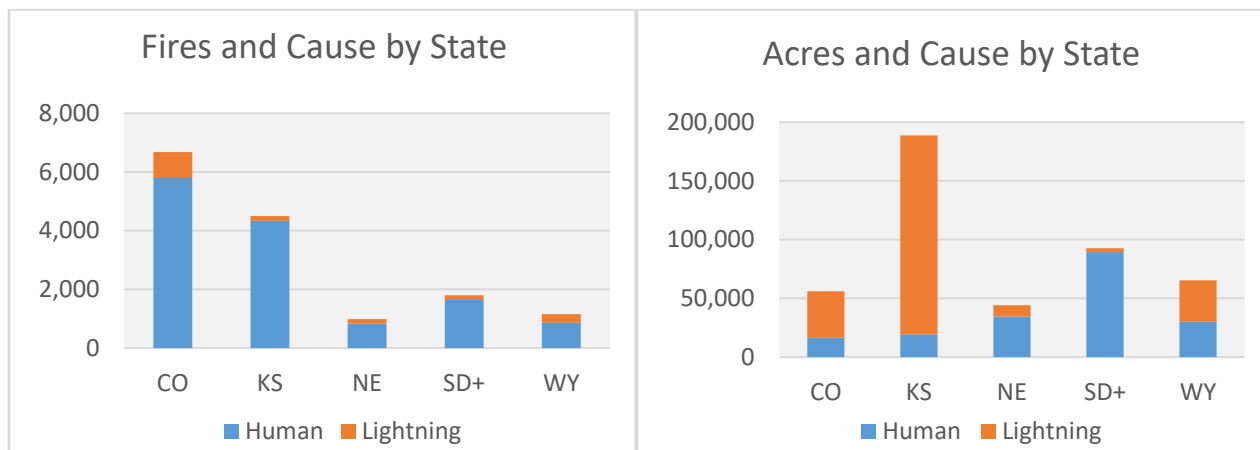
The following table shows, by cause, the number of fires and acres burned within each of the five states of the RMA. Both Federal and Non-federal fires and acres are included in state totals.

State	HUMAN		LIGHTNING		TOTAL	
	Fires	Acres	Fires	Acres	Fires	Acres
CO	5,793	16,620	886	39,436	6,679	56,056
KS	4,333	19,320	165	169,352	4,498	188,672
NE	834	34,488	150	9,673	984	44,161
SD+	1,642	89,377	155	3,307	1,797	92,684
WY	862	30,344	293	34,948	1,155	65,292
RMA TOTAL	13,464	190,149	1,649	256,716	15,113	446,865

The two following pie charts illustrate the percentage of fires and percentage of acreage burned within each of the five states that comprise the RMA. Both Federal and Non-federal fires and acres are included in state percentages.



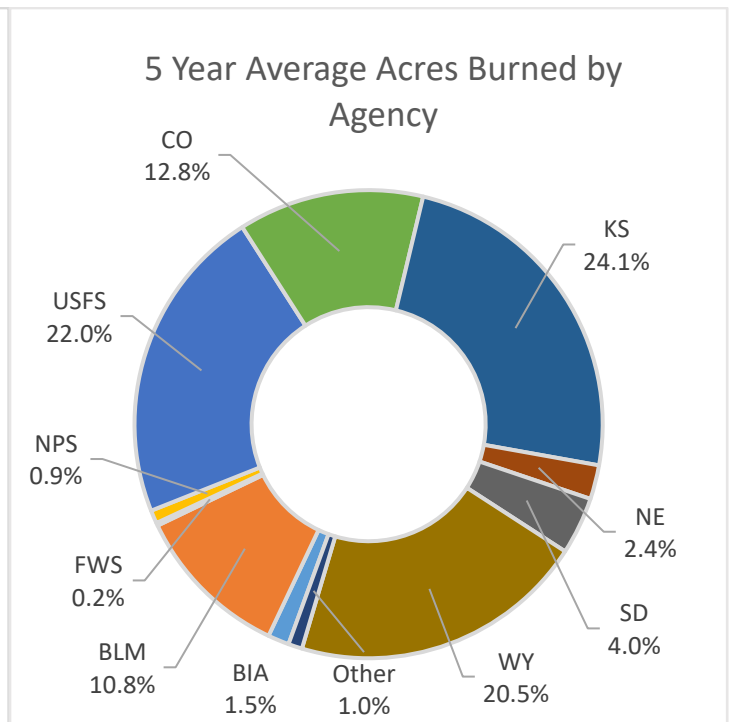
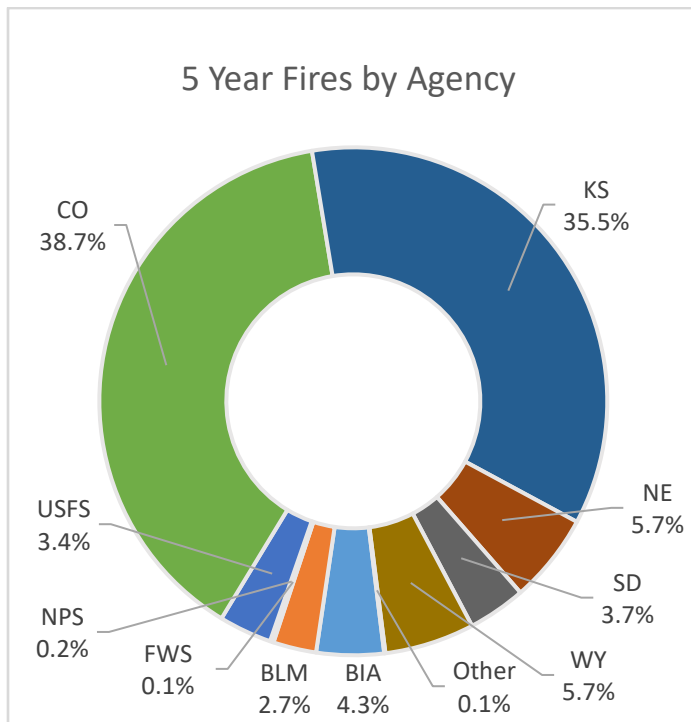
The two following bar graphs illustrate, by cause, the number of fires and acres burned within each of the five states that comprise the RMA. Both Federal and Non-federal fires and acres are included in state totals.



5 YEAR RMA AVERAGES BY AGENCY (2016 - 2020)

The following table shows the average number of fires and acres burned for each of the agencies within the RMA over the past 5 years, **not including the 2021 data**. The pie charts below the table show the 5-year average percentages of fires and acres burned by agency. Federal and Non-federal fires and acres are listed individually. What this means is that a fire that occurred on BIA land in Colorado will **only** be represented in the BIA row and pie slice below; it will **not** be included in the Colorado row or pie slice. The State figures represent all Non-federal fires and acres in the respective state as reported to the USFS Regional Office’s State and Private Forestry staff. See the Appendix for a breakdown of the last 10 years of RMA fire statistics by individual year and agency.

Agency	5 Yr. Avg Fires	2021 Fires % of Avg.	5 Yr. Avg Acres	2021 Acres % of Avg.
BIA	646	142%	12,266	115%
BLM	413	107%	90,156	28%
FWS	9	117%	1,624	78%
NPS	25	120%	7,565	16%
USFS	506	87%	182,598	19%
CO	5,822	102%	106,632	31%
KS	5,336	84%	200,201	93%
NE	858	109%	19,585	207%
SD	555	177%	33,041	243%
WY	861	109%	170,122	18%
Other	11	0%	7,967	0%
RMA 5 Yr. AVG		100%		54%

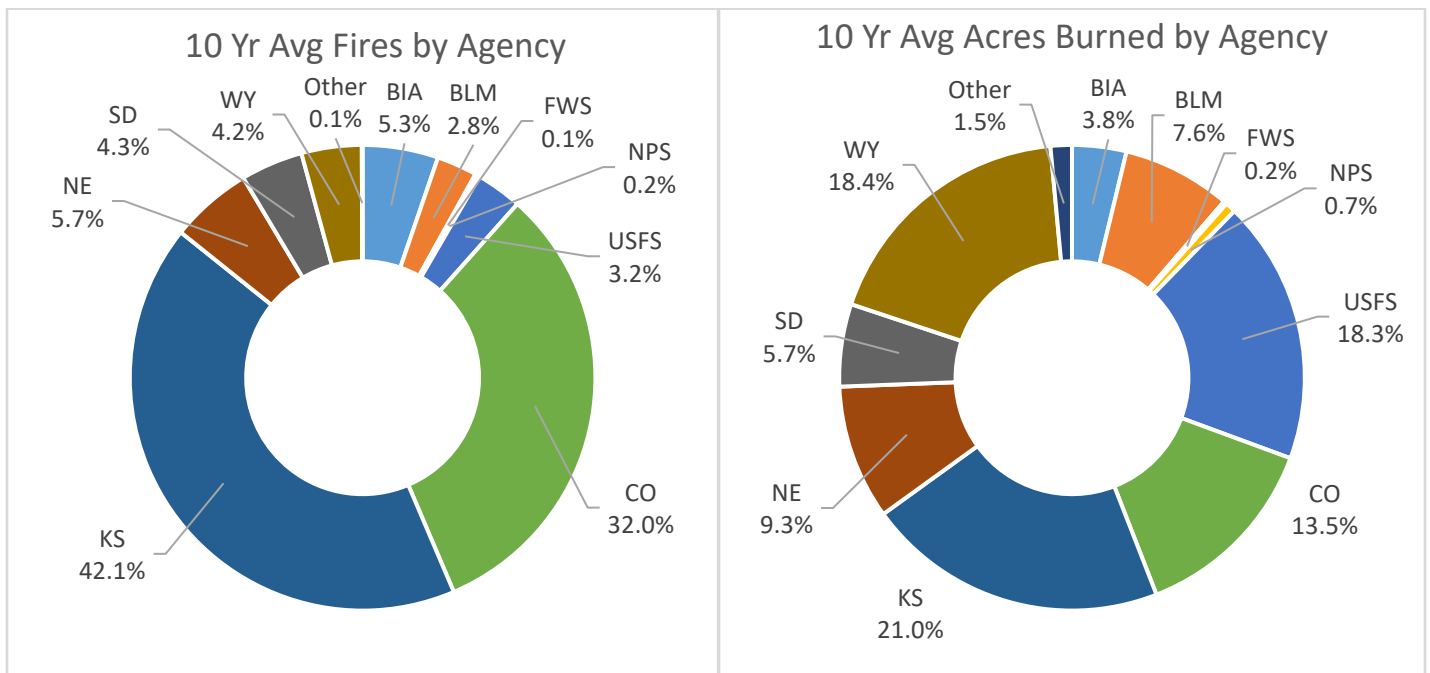


10 YEAR RMA AVERAGES BY AGENCY (2011 - 2020)

The following table shows the average number of fires and acres burned for each of the agencies within the RMA over the past 10 years, **not including the 2021 data**. The pie charts below the table show the 10-year average percentages of fires and acres burned by agency. Federal and Non-federal fires and acres are listed individually. What this means is that a fire that occurred on BIA land in Colorado will **only** be represented in the BIA row and pie slice below; it will **not** be included in the Colorado row or pie slice. The State figures represent all Non-federal fires and acres in the respective state as reported to the USFS Regional Office's State and Private Forestry staff. See the Appendix for a breakdown of the last 10 years of RMA fire statistics by individual year and agency.

Agency	10 Yr. Avg Fires	2021 Fires % of Avg.	10 Yr. Avg Acres	2021 Acres % of Avg
BIA	800	114%	28,654	49%
BLM	427	103%	57,435	44%
FWS	19	59%	1,737	73%
NPS	31	98%	5,578	21%
USFS	488	91%	139,258	25%
CO	4,876	122%	102,328	32%
KS	6,420	70%	159,206	117%
NE	867	108%	71,037	57%
SD	660	149%	43,525	185%
WY	637	148%	139,785	22%
Other†	8	0%	11,276	0%
RMA 10 Yr. AVG		99%		59%

†Other includes all other federal agencies not listed above.



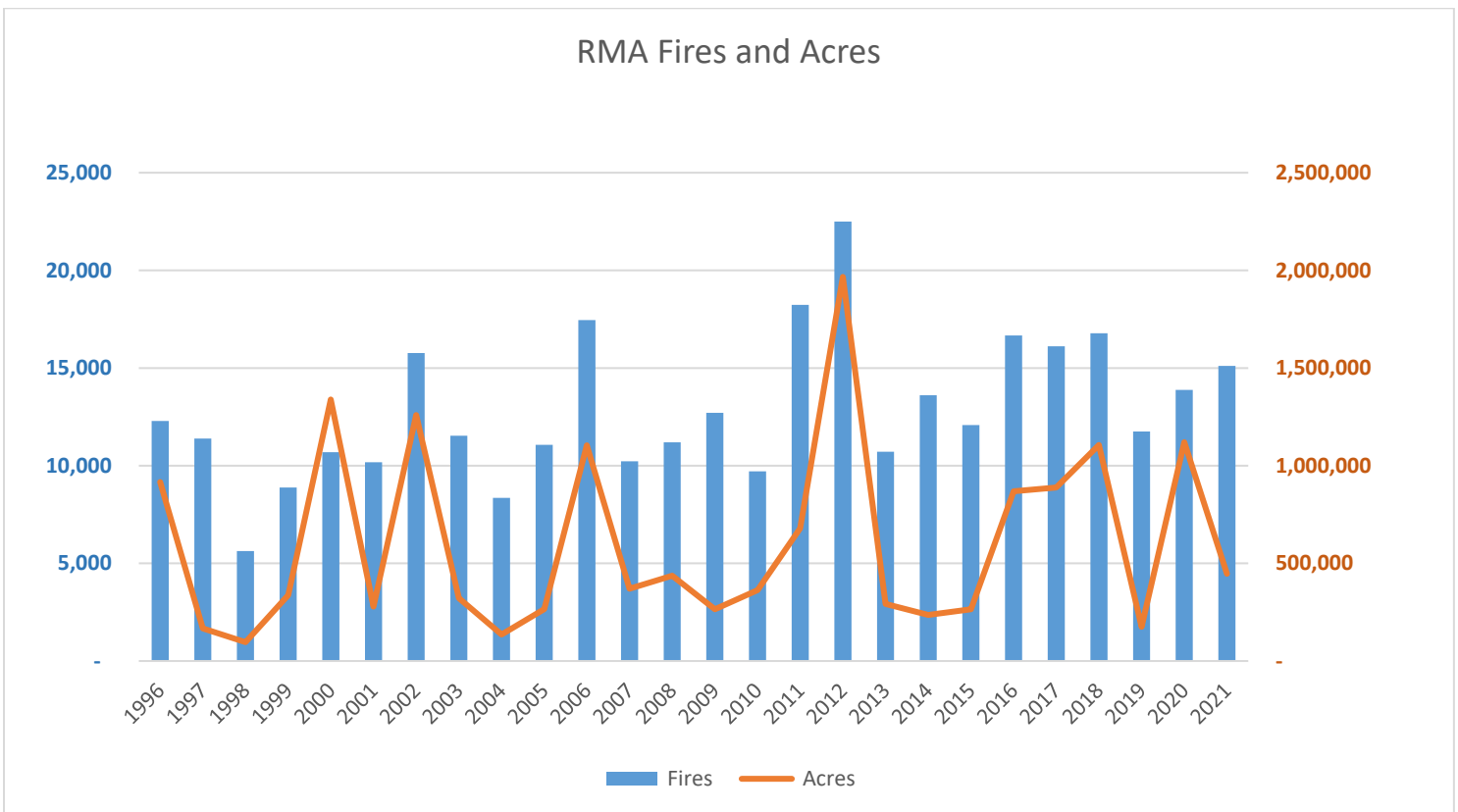
10 YEAR RMA AVERAGE BY STATE (2011 - 2020)

The following table shows the average number of fires and acres burned for each state within the RMA over the past 10 years, compared to each state’s total for 2021. These figures include both federal and non-federal fires and acres.

	CO		KS		NE		SD		WY	
	Fires	Acres	Fires	Acres	Fires	Acres	Fires	Acres	Fires	Acres
2011-2020 Avg	5,618	237,480	6,448	166,286	907	79,463	1,342	69,161	918	207,429
2021	6,679	56,056	4,498	188,672	984	44,161	1,797	92,684	1,155	65,292
2021 % of Avg	119%	24%	70%	113%	109%	56%	134%	134%	126%	31%

RMA FIRES AND ACRES SINCE 1996

The following timeline shows the total fires and acres across the RMA since 1996. These figures were gathered from past RMACC annual reports. In the following chart, the BLUE bars on the graph represent the total FIRES based on the scale on the LEFT. The ORANGE lines represent the total ACRES based on the scale on the RIGHT.



RMA LARGE INCIDENT SUMMARY BY MONTH FOR 2021

The following table shows by start date all large fires that were reported and submitted as final electronically in the ICS-209 system. A large fire is defined as 100 acres or more in timber fuel types, 300 acres or more in grass fuel types, or a fire that has a Type 1 or Type 2 IMT assigned. The "Unit" and "Agency" listed in the table are not necessarily the only unit or agency that was affected by the incident; what is listed is typically the jurisdictional agency for the incident. In the "Kind" column, WF=Full Suppression/Perimeter Control, MON=Monitor, CON=Contain and PZP=Point or Zone Protection/Limited Perimeter Control. In the "Cause" column, H = Human caused, L/N = Lightning or Natural caused, U = Undetermined. The acres shown are the acres reported on the last electronic ICS 209 submitted and are not necessarily the official acres for that incident. In the same vein, the number of structures shown as destroyed is the number reported on the last electronic ICS-209 and is not necessarily the official number of structures destroyed by that incident. The "Structures Destroyed" column includes residences, commercial buildings and outbuildings. A Type is listed in the "IMT Type" column only if a Type 1 IMT, Type 2 IMT, AC or NIMO was assigned.

Incident Name	State	Unit	Agency	Strategy	Start Date	Cause	Acres	Structures Destroyed	IMT Type	Incident Commander(s) IMT1 or IMT2	Days as IC on 209
Pivot CA	SD	SDS	State	FS	January 14	U	734	2			
Heath	KS	LEX	County	FS	January 15	H	800	0			
Ft. Lyons	CO	BNX	County	FS	January 15	U	1,433	0			
January Total							2,967	2			-
Bear Creek	CO	JEX	County	FS	February 7	H	537	-			
240 th	KS	MNX	County	FS	February 28	H	625	0			
February Total							1,162	-			-
Coal Seam West	ND	SRA	BIA	FS	March 2	L/N	928	0			
1400 and Julinn Road	KS	LNK	County	FS	March 4	H	300	-			
Oregon Trail	KS	PTX	County	FS	March 4	H	311	1			
4 Delta 21	KS	HOA	BIA	FS	March 4	H	1,200	0			
Crawford	KS	SNX	County	FS	March 5	H	1,500	4			
Agate Bed	NE	NBF	USFS	FS	March 6	H	2,546	0			
5 Spots	SD	RBA	BIA	FS	March 7	H	406	1			
Moyer Ranch	KS	GEX	County	FS	March 8	H	1,500	0			
Jamestown Marsh	KS	CDX	County	FS	March 10	H	800	1			
Clover	KS	MNX	County	FS	March 10	H	3,000	2			
Wilson	KS	DKX	County	FS	March 21	H	451	0			
P Road and 225th Street	KS	GWX	County	FS	March 21	H	950	0			
244	SD	MRP	NPS	FS	March 29	U	136	0			
Ice	KS	RNX	County	FS	March 29	H	350	0			
County Road 18	CO	BNX	County	FS	March 29	H	600	-			
Beer	KS	RNX	County	FS	March 29	H	700	0			
Indigo	KS	MNX	County	FS	March 29	H	1,200	0			
Schroeder	SD	SDS	State	FS	March 29	U	2,224	8	IMT2	Powell/Hohn	8
400 and Road L	KS	LYX	County	FS	March 29	H	3,500	-			
Dry Creek CA	SD	SDS	State	FS	March 29	U	9,911	5			
Divide	SD	SDS	State	FS	March 29	U	11,000	10			
March Total							43,513	32			8

Rocky Mountain Area and Coordination Center 2021 Annual Report

Incident Name	State	Unit	Agency	Strategy	Start Date	Cause	Acres	Structures Destroyed	IMT Type	Incident Commander(s) IMT1 or IMT2	Days as IC on 209
Blue River Hills	KS	RLX	County	FS	April 2	H	600	0			
345	KS	SNX	County	FS	April 2	H	3,580	0			
Easter	KS	RCX	County	FS	April 4	H	1,500	2			
Boiling Springs	KS	SFX	County	FS	April 6	L/N	4,572	0			
County Road 8	CO	RBX	County	FS	April 11	H	890	0			
Bogue	KS	GHX	County	FS	April 11	H	1,050	0			
Porcupine Cut-Across Jct.	ND	SRA	BIA	FS	April 18	H	319	0			
North Lake	KS	TRX	County	FS	April 26	H	1,800	0			
April Total							14,311	2			-
Hunter	CO	GRD	BLM	FS	June 5	U	731	0			
Sieber	CO	GRD	BLM	FS	June 5	U	1,094	0			
Sweetgrass	WY	CMX	County	FS	June 5	U	320	0			
Sely CA	WY	CRX	County	FS	June 5	L/N	425	0			
Beaver Tail	CO	GRD	BLM	FS	June 5	L/N	463	0			
Dragon	CO	WRD	BLM	FS	June 8	L/N	322	0			
West	WY	CMX	County	FS	June 8	U	746	0			
Robinson	WY	HPD	BLM	CON/FS	June 8	L/N	1,038	0			
Skull Creek	WY	WEX	County	FS	June 9	L/N	1,250	1			
Collom	CO	MFX	County	MON/FS	June 15	U	640	0			
Brokenback Creek	WY	CDS	State	FS	June 15	H	1,523	0			
Trail Canyon	CO	UMA	BIA	FS	June 18	L/N	881	0			
Oil Springs	CO	WRD	BLM	FS	June 18	L/N	12,613	1			
West	CO	MFX	County	FS	June 20	L/N	3,429	-	IMT2	Hagan	6
Sylvan	CO	WRF	USFS	CON/FS	June 20	L/N	3,792	0	IMT1	Dallas	10
Muddy Slide	WY	MRF	USFS	MON/CON	June 20	L/N	4,093	18	IMT2	Hohn/Haydon	11
Wild Cow	CO	GRD	BLM	FS	June 21	L/N	560	0			
Sage Creek	SD	BDP	NPS	MON	June 23	L/N	807	0			
Cellers	WY	MRF	USFS	FS	June 23	U	5,000	0			
June Total							39,727	20			27
Saint Francis	SD	SDS	State	FS	July 3	U	150	0			
Jenne Trail	WY	MRF	USFS	FS	July 3	L/N	556	0			
Wild Horse Creek	WY	MRF	USFS	FS	July 3	U	908	1			
Bridge Plank	SD	CRA	BIA	FS	July 5	L/N	311	0			
Morgan Creek	WY	MRF	USFS	CON/FS	July 9	L/N	7,586	0	IMT2	Hagan	13
Neiber	WY	WBD	BLM	FS	July 14	U	17,545	0			
Crater Ridge	WY	BHF	USFS	FS	July 17	U	7,682	1	IMT2	Haydon	14
Saw Mill	WY	CPS	State	FS	July 18	U	1,308	0			
Dry Fork	WY	MRF	USFS	FS	July 18	L/N	3,207	0			
Deep Creek CA	SD	SDS	State	FS	July 20	H	955	0			
Koenig CA	SD	SDS	State	FS	July 24	H	306	0			
Taco	SD	CRA	BIA	FS	July 24	L/N	682	0			
Fuzzy	SD	CRA	BIA	FS	July 25	H	1,060	5			

Rocky Mountain Area and Coordination Center 2021 Annual Report

Incident Name	State	Unit	Agency	Strategy	Start Date	Cause	Acres	Structures Destroyed	IMT Type	Incident Commander(s) IMT1 or IMT2	Days as IC on 209
Deer Creek 2	WY	BFD	BLM	FS	July 26	U	5,298	0			
Pump Jack	WY	CMX	County	FS	July 28	H	480	0			
Bison	WY	CMX	County	FS	July 28	H	672	0			
313	WY	GOX	County	FS	July 28	H	3,735	0			
Beaver Creek	WY	BHX	County	FS	July 31	U	432	0			
Warm Oil	WY	HOX	County	FS	July 31	L/N	394	0			
Calico	SD	PRA	BIA	FS	July 31	H	401	0			
July Total							53,668	7			27
Whipple Camp	SD	SDS	State	FS	August 2	H	2,565	-			
Hackberry CA	NE	NES	State	FS	August 5	L/N	6,177	0			
County Road 22	CO	WAX	County	FS	August 6	U	750	0			
Jenkins	WY	CMX	County	FS	August 10	U	400	0			
Tompson CA	SD	SDS	State	FS	August 10	H	603	0			
Cross	NE	NES	State	FS	August 11	H	2,460	0			
118 CA	NE	NES	State	FS	August 17	H	6,000	0			
Hawk Draw CA	SD	SDS	State	FS	August 18	H	350	0			
County Road 57	CO	YMX	County	FS	August 20	U	600	0			
Little Sleep	SD	PRA	BIA	FS	August 22	L/N	447	0			
Mount Jesus	KS	CAX	County	FS	August 23	H	480	0			
Bijou	CO	MGX	County	FS	August 27	L/N	3,083	0			
Black Mountain	WY	MRF	USFS	CON/FS	August 29	L/N	418	0			
August Total							24,333	-			-
Sand Creek	WY	SHF	USFS	FS	September 9	U	929	0			
Indian Head	WY	PLX	County	FS	September 11	L/N	330	0			
Remington	WY	BFD	BLM	FS	September 11	H	550	0			
Post CA	NE	NES	State	FS	September 13	L/N	5,446	0			
Vista Trend CA	NE	NES	State	FS	September 17	H	2,790	0			
Gallop	KS	CQX	County	FS	September 26	H	1,800	0			
September Total							11,845	-			-
Auburn	SD	SDS	State	FS	October 4	H	964	0			
Red Shirt	SD	PRA	BIA	FS	October 5	H	683	1			
36 Fire	CO	YMX	County	FS	October 26	U	356	0			
October Total							2,003	1			-
Buffalo Creek	NE	NES	State	FS	November 14	H	2,600	0			
Wex CR 77 & CR 128	CO	WEX	County	FS	November 15	H	586	0			
FT 16	SD	RBA	BIA	FS	November 16	H	676	0			
Highway 14	CO	LOX	County	FS	November 16	U	807	0			
November Total							4,669	-			-
Wichita County	KS	WHX	County	FS	December 15	H	782	5			
North Wichita	KS	WHX	County	FS	December 15	H	7,572	5			
Four County	KS	RSX	County	FS	December 15	H	121,622	32			
Marshall	CO	BLX	County	FS	December 30	U	6,219	0	IMT1	Dallas	7
December Total							136,195	42			7
Yearly Total							334,393	106			69

† Note: All Medicine Bow Routt NF fires are now WY-MRF in the SIT/209 System.

Rocky Mountain Area and Coordination Center 2021 Annual Report

2021 RMA LARGE FIRE SUMMARY BY AGENCY

The following table shows the number of large fires and acres burned by large fires in the RMA. The data in the table is based on the last ICS-209 report submitted electronically and are not necessarily the official acres of the incident. The “Agency” listed is the jurisdictional agency listed on the ICS-209 and is not necessarily the only agency that was affected by the incident. Large fires reported under a county’s jurisdiction are included in the corresponding state’s figures.

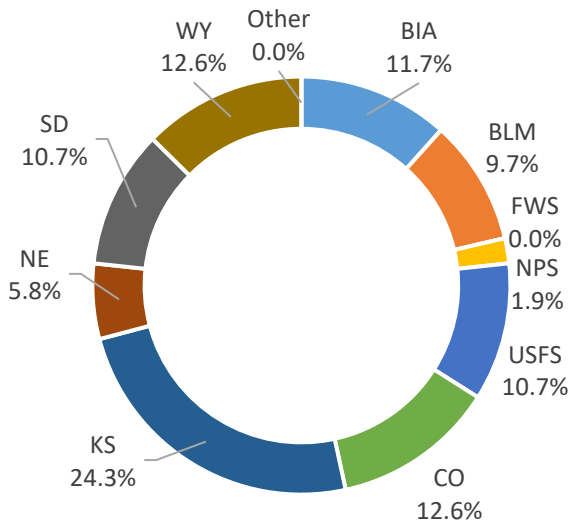
Agency	State	Reported Fires	Reported Fire Acres
BIA	CO	1	881
	KS	1	1,200
	NE	0	0
	SD	8	4,666
	WY	0	0
	ND	2	1,247
Total		12	7,994
BLM	CO	6	15,783
	WY	4	24,431
	Total	10	40,214
FWS	CO	0	0
	KS	0	0
	NE	0	0
	SD	0	0
	WY	0	0
	Total	0	0
NPS	CO	0	0
	KS	0	0
	NE	0	0
	SD	2	943
	WY	0	0
	Total	2	943
USFS	CO	1	3,792
	KS	0	0
	NE	1	2,546
	SD	0	0
	WY	9	30,379
	Total	11	36,717
STATES	CO	13	19,930
	KS	25	161,345
	NE	6	25,473
	SD	11	29,762
	WY	13	12,015
	Total	68	248,525
OTHER	Other	0	0
RMA TOTAL		103	334,393

2021 RMA LARGE FIRE SUMMARY BY AGENCY

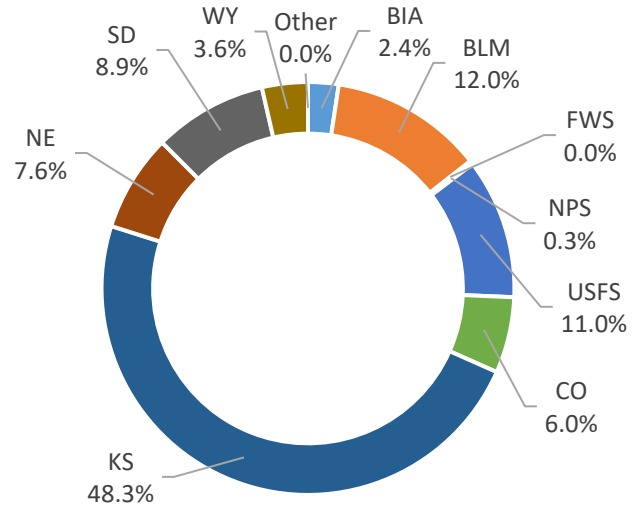
The following table and two pie charts illustrate the percent of large fires and percent of large fire acreage burned for each of the agencies within the RMA. Federal and Non-federal fires and acres are represented individually. What this means is that a fire that occurred on BIA land in Colorado will only be represented in the BIA pie slice below; it will not be included in the Colorado pie slice. The State percentages represent all Non-federal fires and acres in the respective state. Other includes other Federal Agencies not listed.

Agency Type	Agency	Large Fires	Large Fire Acres
FEDERAL	BIA	12	7,994
	BLM	10	40,214
	FWS	0	0
	NPS	2	943
	USFS	11	36,717
STATES	CO	13	19,930
	KS	25	161,345
	NE	6	25,473
	SD	11	29,762
	WY	13	12,015
OTHER	Other	0	0
RMA TOTAL		103	334,393

Large Fires by Agency



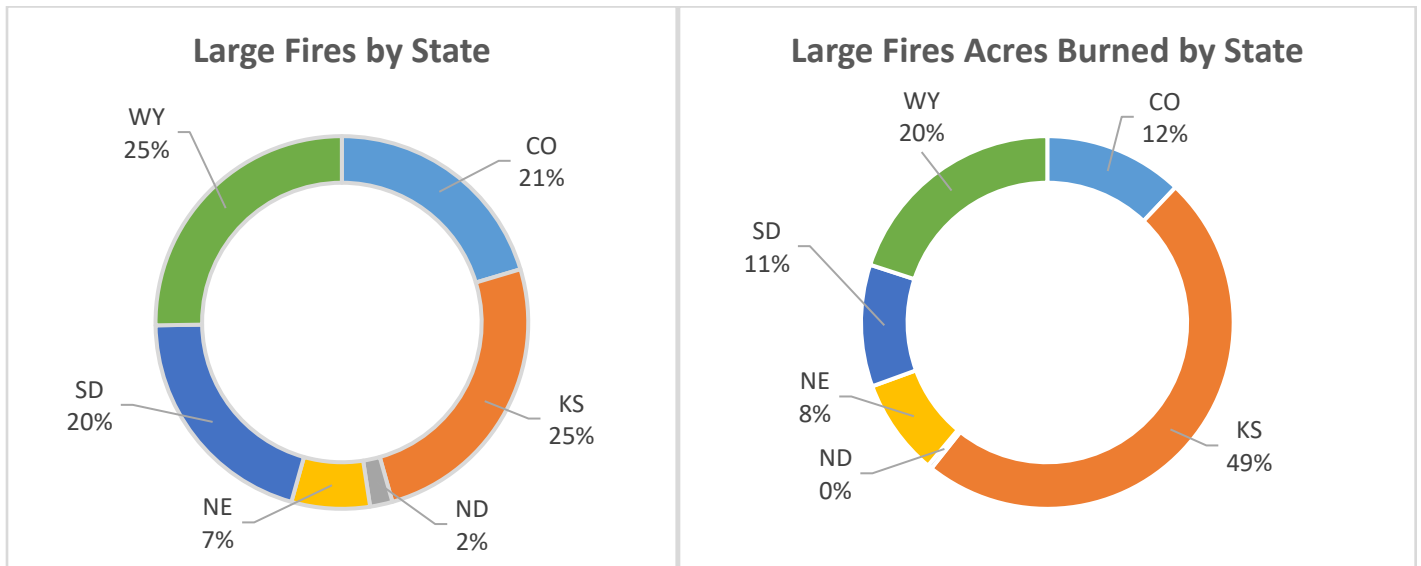
Large Fire Acres Burned by Agency



**RMA 2021 LARGE FIRE SUMMARY
COMBINING FEDERAL AND NON-FEDERAL AGENCIES WITHIN EACH STATE**

The following table and pie charts show the number of large fire and acres burned by large fires within each of the five states of the RMA. Both Federal and Non-federal fires and acres are included in these state totals. This information is from the last electronically submitted ICS-209 for an incident, which are not necessarily the official acres for the incident.

State	Large Fires	Large Fire Acres
CO	21	40,386
KS	26	162,545
ND	2	1,247
NE	7	28,019
SD	21	35,371
WY	26	66,825
RMA TOTAL	103	334,393



RMA 2021 RMA RESOURCE ORDER SUMMARY

The following table shows the percentage of orders filled relative to the total orders entered minus orders deleted for each resource category. These figures include incoming out of area resources, as well as outgoing RMA resources across all RMA dispatch centers. This information is derived from IROC Reports.

RMA 2021 Resource Orders Percent Filled

Req Catalog Name	Enter	Fill*	Fill Rate
Aircraft	2,091	1,764	84%
Crew	572	394	69%
Equipment	3,221	3,310	103%
Overhead	16,275	16,993	104%
Supply	10,107	5,570	55%
Summary	32,266	28,031	87%

The following table shows the number of resource orders, by resource category, processed by all Dispatch Centers within the RMA. These figures include incoming out of area resources, as well as outgoing RMA resources across all RMA dispatch centers. This information is derived from IROC Reports.

RMA 2021 Resource Orders Summary

Req Catalog Name	Enter	Place	Retrieve	UTF	Fill
Aircraft	2,091	2,138	152	246	1,764
Crew	572	691	66	263	394
Equipment	3,221	3,691	147	676	3,310
Overhead	16,275	14,895	405	2,423	16,993
Supply	10,107	250	16	67	5,570
Summary	32,266	21,665	786	3,675	28,031

Rocky Mountain Area and Coordination Center 2021 Annual Report

The following table shows the 2016 - 2020 5-year average of resource orders by category processed by dispatch centers within the RMA. These figures include incoming out of area resources, as well as outgoing RMA resources across all RMA dispatch centers

RMA 5 Year average of Resource Orders

Req Catalog Name	Enter	Place	Retrieve	UTF	Fill
Aircraft	2,917	2,982	250	311	2,221
Crew	825	935	101	172	563
Equipment	4,396	2,959	310	637	3,750
Overhead	19,349	10,326	706	4,397	18,115
Supply	18,318	5,389	250	60	11,096
Summary	45,805	22,590	1,618	5,578	35,744

The following table shows the comparison of 2021 to the 5-year average of resources ordered by category by dispatch centers within the RMA. These figures include incoming out of area resources, as well as outgoing RMA resources across all RMA dispatch centers

2021 Compared to 5-Year Average

Req Catalog Name	Enter	Place	Retrieve	UTF	Fill
Aircraft	72%	72%	61%	79%	79%
Crew	69%	74%	65%	153%	70%
Equipment	73%	125%	47%	106%	88%
Overhead	84%	144%	57%	55%	94%
Supply	55%	5%	6%	111%	50%
Summary	70%	96%	49%	66%	78%

**INCIDENT MANAGEMENT TEAMS
RMA INCIDENT MANAGEMENT TEAM SUMMARY FOR 2021**

The following table shows the Incident Management Teams (IMTs) hosted by the Rocky Mountain Area and the assignments RMA IMTs had outside the RMA geographic area. Other visiting IMTs/ACs/NIMOs may have also been assigned to the fires listed below, see the proceeding section entitled "RMA Large Incident Summary By Month for 2021" to obtain a complete listing of all large fires in the RMA and teams assigned to those fires.

Mob Date	First Day as a Large Fire	Incident Commander(s)	Team Type	Number of Days Listed as IC on the ICS-209	Incident Name	Incident Number
March 30	March 29	Powell/Hohn	IMT2	8	Schroeder	SD-SDS-210165
June 11	June 10	Haydon	IMT2	7	Robinson	WY-BFD-210153
June 22	June 20	Hagan	IMT2	6	West	CO-MFX-000192
June 23	June 21	Hohn/Haydon	IMT2	11	Muddy Slide	WY-MRF-000195
June 23	June 20	Dallas	IMT1	10	Sylvan	CO-WRF-210187
July 12	July 9	Hagan	IMT2	13	Morgan Creek	WY-MRF-000260
July 18	July 4	Dallas	IMT1	14	Tamarack	NV-HTF-030419
July 18	July 17	Haydon	IMT2	14	Crater Ridge	WY-BHF-000280
August 5	July 9	Hagan	IMT2	19	Green Ridge	OR-UMF-000659
August 9	July 23	Dallas	IMT1	11	Woods Creek	MT-HLF-000258
August 13	August 11	Haydon	IMT2	3	Bedrock	ID-PDS-000892
August 19	August 6	Waln/Hohn/Haydon	IMT2	5	Walker Creek	WA-NES-002245
September 1	August 9	Dallas	IMT1	14	Devils Knob Complex	OR-UPF-000450
September 12	September 10	Hagan	IMT2	0	KNP Complex	CA-KNP-000122
September 16	Preposition	Hagan	IMT2	0	OSC September Support	CA-OSC-000043
September 20	July 13	Hagan	IMT2	8	Dixie	CA-BTU-009205
September 28	August 1	Haydon	IMT2	14	Rough Patch Complex	OR-UPF-000373
December 31	December 31	Dallas	IMT1	7	Marshall	CO-BLX-000995
TOTAL				164		
	Number RMA IMT Type 1 Days			56		
	Number of RMA IMT Type 2 Days			108		
	Number of RMA AC Days			0		
	Number of RMA NIMO Days			0		

VISITING IMTs TO THE RMA IN 2021

The following table shows the Incident Management Teams (IMTs), Area Command Teams (AC) and National Incident Management Organization(s) (NIMO) ordered into the Rocky Mountain Area and the assignments those IMTs/s/ACs/NIMOs had in 2021. The "Start Date" is the date the fire started, not necessarily the date the IMT/Organization was assigned to the incident. Other "home" RMA IMTs/ACs/s may have also been assigned to fires listed below, see the proceeding section entitled "RMA Large Incident Summary By Month for 2021" for a complete listing of all large fires in the RMA and teams assigned to those fires.

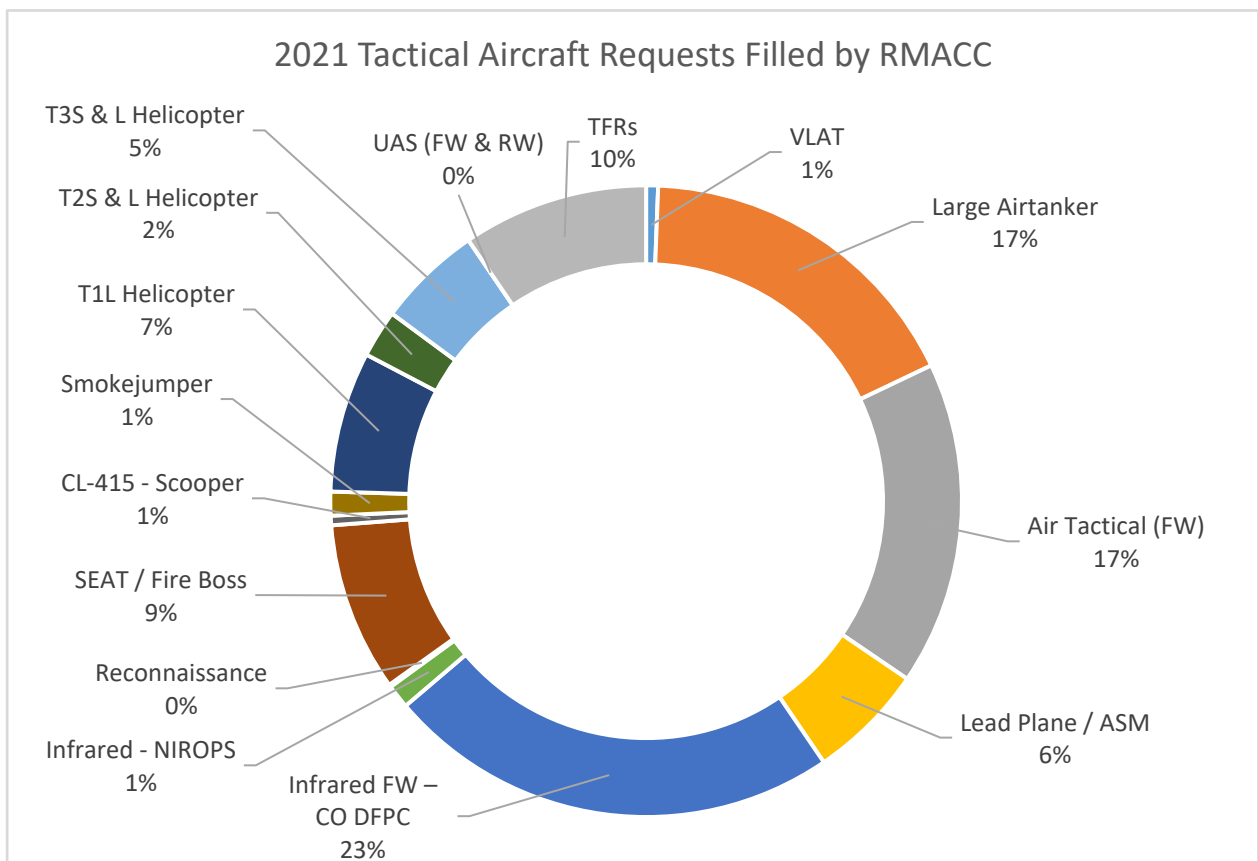
Start Date	1st Day as a Large Fire	Incident Commander(s)	IMT Type	Number of Days Listed As IC on the ICS 209*	Incident Name	Incident Number
June 22	August 10	Bollier	IMT2	11	Oil Springs	CO-WRD-000178
TOTAL				11		
Number of Type 1 Visiting IMT Days				0		
Number of Type 2 Visiting IMT Days				11		
Number of AC Visiting IMT Days				0		
Number of NIMO Visiting Days				0		

AVIATION TACTICAL AVIATION RESOURCE BREAKDOWN IN 2021 (Orders processed by RMC only)

This report reflects the orders processed only by RMACC. It does not include frequency orders or some aviation services such as Mobile Retardant Bases/Plants or Temporary Towers.

Resource Type	Ordered	Filled	Cancelled	UTF
VLAT	10	5	1	4
Large Airtanker	185	142	16	27
Air Tactical (FW)	215	136	22	57
Lead Plane / ASM	72	49	8	15
Infrared FW - CO DFPC	210	191	12	7
Infrared - NIROPS	35	10	1	24
Reconnaissance	8	1	0	7
SEAT / Fire Boss	85	71	8	6
CL-415 - Scooper	10	4	0	6
Smokejumper	17	10	4	3
T1L Helicopter	79	59	10	10
T2S & L Helicopter	37	20	3	14
T3S & L Helicopter	96	44	4	48
UAS (FW & RW)	3	0	2	1
TFRs	81	78	3	0
TOTAL	1,143	820	94	229

ASM = Aerial Supervision Module; †VLAT = Very Large Airtanker
 Large Airtanker = Includes Canadian Convair 580, Modular Airborne FireFighting System (MAFFS)
 Lead Plane = Includes Canadian Bird Dog



RMA CONTRACT AIRTANKER/SEAT OPERATIONS IN 2021

The following table shows the contract airtankers/SEATs based with the RMA during the fire season. The Gallons Delivered and Missions Flown columns reflect all gallons (retardant, water and enhancer) and missions for that contract airtanker/SEAT, whether the mission was within the RMA or not. In addition to the SEATs listed below, the National Multi-Agency Coordinating Group based 3 more SEATs (T-404, T-457 and T-492) in the RMA for at least part of the fire season.

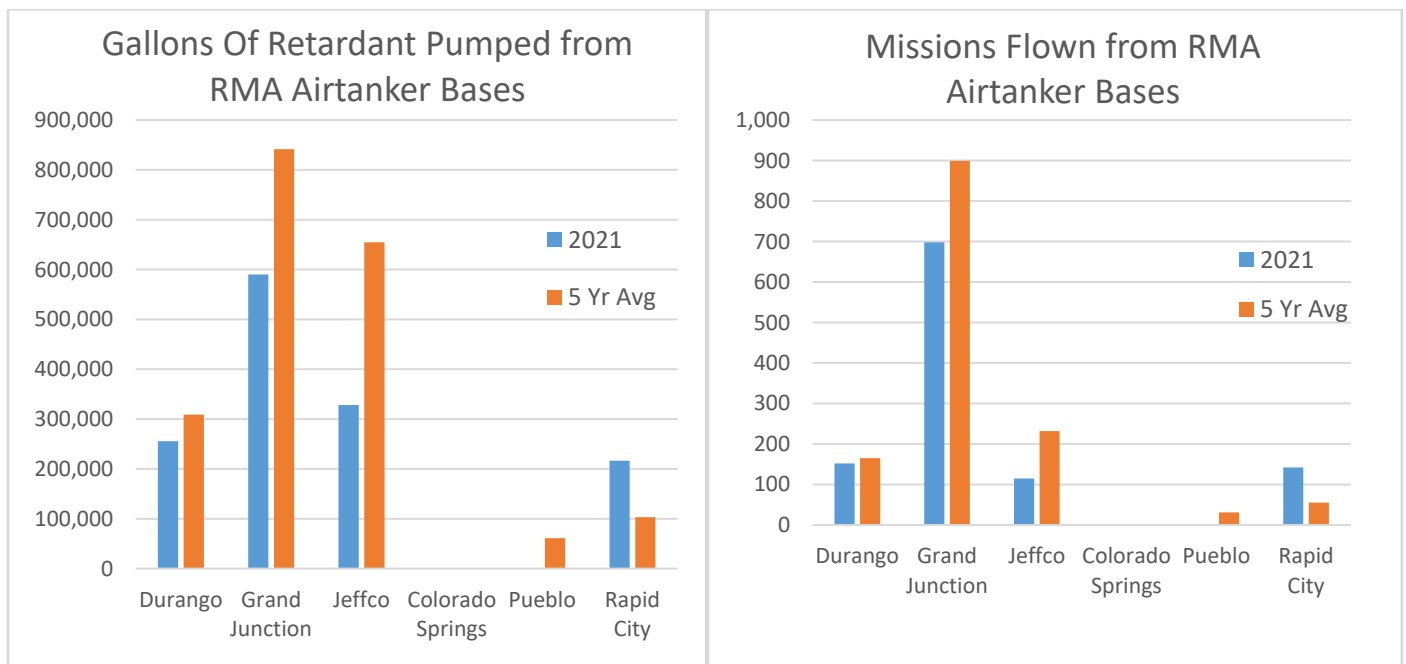
Tanker Number	Agency	Gallons Delivered	Missions Flown
T-832	BLM-WY	46,546	73
T-889	BLM-WY	48,344	74
T-838	BLM-WY	15,991	23
T-868	BLM-WY	15,981	23
T-817	BLM-WY	25,558	39
T-818	BLM-WY	25,935	39
T-833	BLM-WY	2,050	3
T-871	BLM-WY	2,170	3
T-803	BLM-WY	13,390	20
T-823	BLM-WY	12,630	19
T-853	BLM-WY	1,380	2
T-845	BLM-WY	2,660	4
T-865	BLM-WY	9,245	14
T-874	BLM-WY	9,143	14
T-883	BLM-WY	2,740	4
T-842	BLM-WY	1,300	2
T882	BLM-CO	58,050	85
T863	BLM-CO	56,878	83
T838	BLM-CO	38,029	54
T868	BLM-CO	36,065	51
T817	BLM-CO	5,943	9
T818	BLM-CO	6,085	9
T832	BLM-CO	1,331	2
T889	BLM-CO	620	1
T879	BLM-CO	5,123	7
T872	BLM-CO	5,139	7
T855	BLM-CO	2,750	4
T873	BLM-CO	2,785	4
T816	BLM-CO	2,785	4
T815	BLM-CO	2,821	4
T892	BLM-CO	748	1
T895	BLM-CO	768	1
TOTAL		430,295	682

RMA AIRTANKER BASE AND RELOAD BASE OPERATIONS IN 2021

The following table and pie charts show the Airtanker and Reload Bases within the RMA. The Gallons Pumped and Missions Flown columns reflect all gallons and Airtanker missions flown out of that Base, however those missions are not necessarily just RMA missions, as an RMA base could be used as a reload facility for other geographic areas.

Tanker Base	Gallons Pumped 2021	Missions Flown 2021	5-Yr Avg Gallons Pumped	5-Yr Avg Missions Flown
Durango	255,687	152	308,925	165
Grand Junction	590,002	698	841,358	899
Jeffco	328,271	115	654,661	232
Colorado Springs	0	0	*	*
Pueblo	0	0	60,915	31
Rapid City	216,382	142	103,101	55
RMA TOTAL	1,390,342	1,107	1,968,960	1,382

*2018 was the first year for Colorado Springs tanker base



**HANDCREWS
RMA TYPE 1 HANDCREW SUMMARY FOR 2021**

The following table shows the 7 Type 1 Handcrews hosted in the RMA and the total incidents, in area and out-of-area that each crew was assigned to during the 2021 fire season. These figures come directly from each crew and represent all incidents, not just incidents for which RMC processed an order. Days listed represent days working on an incident and do not include travel or R&R.

Crew Name	Area Incidents	Total Days on Area Incidents	National Incidents	Total Days on National Incidents
Alpine Hotshots	5	30	11	98
Craig Hotshots	8	28	7	52
Pike Hotshots	5	28	9	70
Roosevelt Hotshots	7	35	7	45
San Juan Hotshots	10	30	8	55
Tatanka Hotshots	10	55	5	57
Wyoming Hotshots	3	32	14	84
TOTAL	48	238	61	461
Avg Days Crews Worked on Incidents This Season		34.0		65.9
Avg Days Crews Worked on a Single Incident		5.0		7.6

RMA TYPE 2 and TYPE 2IA HANDCREW SUMMARY FOR 2021

The following table shows Type 2 and Type 2IA handcrew orders that were processed by the RMC for crews that are an RMA resource. An RMA resource is defined as any resource from a unit within the Rocky Mountain Geographic Area.

	Area Assignments	Days Out	National Assignments	Days Out
TOTAL	131	679	29	221
Avg Days Out		5.2		7.6

VISITING TYPE 1, TYPE 2 and TYPE 2IA HANDCREWS TO THE RMA IN 2021

The following table shows the total number of Type 1, Type 2 and Type 2IA crews that visited the RMA this year. The table does not reflect the number of individual incidents a crew might have been assigned to while in the RMA.

Crew Type	Number of Assignments	Days on Assignments	Avg Days on Assignment in the RMA
Type 1 Handcrew	12	140	11.7
Type 2 and 2IA Handcrew	72	475	6.6
TOTAL	84	615	7.3

APPENDIX

10 YEARS OF RMA INTERAGENCY FIRE STATISTICS

Appendix - 1

This section includes a table of RMA fires and acres over the last 10 years by individual year and agency.

RMA LARGE INCIDENT SUMMARY BY STATE

Appendix - 2

This section includes tables of all large incidents reported to the Rocky Mountain Coordination Center on an ICS-209 sorted by State.

RMA RESOURCE BREAKDOWN

Appendix - 3

This section includes a table of resources that were processed by Rocky Mountain Area dispatch centers. These figures include incoming and outgoing resources, and are listed by their ROSS catalog item.

10 YEARS OF RMA INTERAGENCY FIRE STATISTICS

The following table shows the number of fires and acres burned for each of the agencies within the RMA over the past 10 years, not including the 2021 data. Federal and Non-federal fires and acres are listed individually. What this means is that a fire that occurred on BIA land in Colorado will only be represented in the BIA row below; it will not be included in the Colorado row. The State figures represent all Non-federal fires and acres in the respective state as reported to the USFS Regional Office's State and Private Forestry staff.

Agency	2020		2019		2018		2017		2016	
	Fires	Acres	Fires	Acres	Fires	Acres	Fires	Acres	Fires	Acres
BIA	722	14,444	276	2,818	457	4,794	906	11,822	867	27,452
BLM	382	198,113	332	20,542	531	139,955	366	58,772	453	33,399
FWS	12	464	3	5,097	10	1,614	14	413	8	531
NPS	17	30,304	14	192	36	2,990	35	2,476	23	1,864
USFS	595	549,753	402	32,152	499	214,057	472	18,048	564	98,979
Federal Total	1,728	793,078	1,027	60,801	1,533	363,410	1,793	91,531	1,915	162,225
States										
CO	6,022	149,484	6,721	28,084	6,184	250,297	5,398	63,182	4,783	42,112
KS	3,486	43,575	2,629	21,952	6,802	188,986	5,856	433,432	7,907	313,060
NE	731	21,543	498	12,660	956	13,975	1,422	27,158	681	22,588
SD	724	27,685	213	899	335	4,195	811	60,213	691	72,212
WY	1,193	85,207	659	43,154	947	268,468	832	212,622	672	241,159
State Total	12,156	327,494	10,720	106,749	15,224	725,921	14,319	796,607	14,734	691,131
Other	0	0	8	7,074	26	16,848	5	131	17	15,780
RMA Total	13,884	1,120,572	11,755	174,624	16,783	1,106,179	16,117	888,269	16,666	869,136
Agency	2015		2014		2013		2012		2011	
	Fires	Acres	Fires	Acres	Fires	Acres	Fires	Acres	Fires	Acres
BIA	650	21,986	679	4,102	743	915	1,825	172,491	874	25,713
BLM	340	6,980	376	11,466	487	8,535	559	72,576	445	24,012
FWS	17	306	30	1,334	16	619	42	4,387	35	2,604
NPS	23	7,411	33	2,508	33	1,072	51	4,473	41	2,491
USFS	278	2,766	335	2,482	434	180,853	769	219,383	532	74,109
Federal Total	1,308	39,449	1,453	21,892	1,713	191,994	3,246	473,310	1,927	128,929
States										
CO	2,971	19,716	3,169	13,764	4,062	61,179	5,129	283,872	4,321	111,592
KS	6,031	88,207	7,171	162,955	3,754	17,061	10,627	113,474	9,939	209,353
NE	591	41,469	854	23,007	473	10,991	1,503	501,961	962	35,018
SD	676	44,424	567	10,841	425	3,410	1,438	154,875	722	56,498
WY	495	23,151	387	2,074	281	1,511	547	427,559	355	92,948
State Total	10,764	216,967	12,148	212,641	8,995	94,152	19,244	1,481,741	16,299	505,409
Other*	5	8,639	3	1,400	4	6,502	6	11,617	6	44,772
RMA TOTAL	12,077	265,055	13,604	235,933	10,712	292,648	22,496	1,966,668	18,232	679,110

RMA LARGE INCIDENT SUMMARY BY STATE FOR 2021

The following table show the same information found earlier in this report in the section entitled “RMA Large Incident Summary By Month For 2021,” however this table is organized first by the state in which the incident occurred, and then by the date the incident occurred. All of the narrative information about the preceding table should be applied to this table as well.

Incident Name	State	Unit	Agency	Strategy	Start Date	Cause	Acres	Structures Destroyed	IMT Type	Incident Commander(s) IMT1 or IMT2	Days as IC on 209
Ft. Lyons	CO	BNX	County	FS	January 15	U	1,433	0			
Bear Creek	CO	JEX	County	FS	February 7	H	537	0			
County Road 18	CO	BNX	County	FS	March 29	H	600	0			
County Road 8	CO	RBX	County	FS	April 11	H	890	0			
Hunter	CO	GRD	BLM	FS	June 5	U	731	0			
Sieber	CO	GRD	BLM	FS	June 5	U	1,094	0			
Beaver Tail	CO	GRD	BLM	FS	June 5	L/N	463	0			
Dragon	CO	WRD	BLM	FS	June 8	L/N	322	0			
Collom	CO	MFX	County	MON/FS	June 15	U	640	0			
Trail Canyon	CO	UMA	BIA	FS	June 18	L/N	881	0			
Oil Springs	CO	WRD	BLM	FS	June 18	L/N	12,613	1			
West	CO	MFX	County	FS	June 20	L/N	3,429	0	IMT2	Hagan	6
Sylvan	CO	WRF	USFS	CON/FS	June 20	L/N	3,792	0	IMT1	Dallas	10
Wild Cow	CO	GRD	BLM	FS	June 21	L/N	560	0			
County Road 22	CO	WAX	County	FS	August 6	U	750	0			
County Road 57	CO	YMX	County	FS	August 20	U	600	0			
Bijou	CO	MGX	County	FS	August 27	L/N	3,083	0			
36 Fire	CO	YMX	County	FS	October 26	U	356	0			
Wex CR 77 & CR 128	CO	WEX	County	FS	November 15	H	586	0			
Highway 14	CO	LOX	County	FS	November 16	U	807	0			
Marshall	CO	BLX	County	FS	December 30	U	6,219	0	IMT1	Dallas	7
Colorado Total							40,386	1			23
Heath	KS	LEX	County	FS	January 15	H	800	0			
240th	KS	MNX	County	FS	February 28	H	625	0			
1400 and Julinn Road	KS	LNK	County	FS	March 4	H	300	0			
Oregon Trail	KS	PTX	County	FS	March 4	H	311	1			
4 Delta 21	KS	HOA	BIA	FS	March 4	H	1,200	0			
Crawford	KS	SNX	County	FS	March 5	H	1,500	4			
Moyer Ranch	KS	GEX	County	FS	March 8	H	1,500	0			
Jamestown Marsh	KS	CDX	County	FS	March 10	H	800	1			
Clover	KS	MNX	County	FS	March 10	H	3,000	2			
Wilson	KS	DKX	County	FS	March 21	H	451	0			
P Rd and 225th St	KS	GWX	County	FS	March 21	H	950	0			
Ice	KS	RNX	County	FS	March 29	H	350	0			
Beer	KS	RNX	County	FS	March 29	H	700	0			
Indigo	KS	MNX	County	FS	March 29	H	1,200	0			
400 and Road L	KS	LYX	County	FS	March 29	H	3,500	0			
Blue River Hills	KS	RLX	County	FS	April 2	H	600	0			
345	KS	SNX	County	FS	April 2	H	3,580	0			

Appendix 2

Incident Name	State	Unit	Agency	Strategy	Start Date	Cause	Acres	Structures Destroyed	IMT Type	Incident Commander(s) IMT1 or IMT2	Days as IC on 209
Easter	KS	RCX	County	FS	April 4	H	1,500	2			
Boiling Springs	KS	SFX	County	FS	April 6	L/N	4,572	0			
Bogue	KS	GHX	County	FS	April 11	H	1,050	0			
North Lake	KS	TRX	County	FS	April 26	H	1,800	0			
Mount Jesus	KS	CAX	County	FS	August 23	H	480	0			
Gallop	KS	CQX	County	FS	September 26	H	1,800	0			
Wichita County	KS	WHX	County	FS	December 15	H	782	5			
North Wichita	KS	WHX	County	FS	December 15	H	7,572	5			
Four County	KS	RSX	County	FS	December 15	H	121,622	32			
Kansas Total							162,545	52			-
Coal Seam West	ND	SRA	BIA	FS	March 2	L/N	928	0			
Porcupine Cut-Across Jct.	ND	SRA	BIA	FS	April 18	H	319	0			
North Dakota Total							1,247	-			-
Agate Bed	NE	NBF	USFS	FS	March 6	H	2,546	0			
Hackberry CA	NE	NES	State	FS	August 5	L/N	6,177	0			
Cross	NE	NES	State	FS	August 11	H	2,460	0			
118 CA	NE	NES	State	FS	August 17	H	6,000	0			
Post CA	NE	NES	State	FS	September 13	L/N	5,446	0			
Vista Trend CA	NE	NES	State	FS	September 17	H	2,790	0			
Buffalo Creek	NE	NES	State	FS	November 14	H	2,600	0			
Nebraska Total							28,019	-			-
Pivot CA	SD	SDS	State	FS	January 14	U	734	2			
5 Spots	SD	RBA	BIA	FS	March 7	H	406	1			
244	SD	MRP	NPS	FS	March 29	U	136	0			
Schroeder	SD	SDS	State	FS	March 29	U	2,224	8	IMT2	Powell/Hohn	8
Dry Creek CA	SD	SDS	State	FS	March 29	U	9,911	5			
Divide	SD	SDS	State	FS	March 29	U	11,000	10			
Sage Creek	SD	BDP	NPS	MON	June 23	L/N	807	0			
Saint Francis	SD	SDS	State	FS	July 3	U	150	0			
Bridge Plank	SD	CRA	BIA	FS	July 5	L/N	311	0			
Deep Creek CA	SD	SDS	State	FS	July 20	H	955	0			
Koenig CA	SD	SDS	State	FS	July 24	H	306	0			
Taco	SD	CRA	BIA	FS	July 24	L/N	682	0			
Fuzzy	SD	CRA	BIA	FS	July 25	H	1,060	5			
Calico	SD	PRA	BIA	FS	July 31	H	401	0			
Whipple Camp	SD	SDS	State	FS	August 2	H	2,565	0			
Tompson CA	SD	SDS	State	FS	August 10	H	603	0			
Hawk Draw CA	SD	SDS	State	FS	August 18	H	350	0			
Little Sleep	SD	PRA	BIA	FS	August 22	L/N	447	0			
Auburn	SD	SDS	State	FS	October 4	H	964	0			
Red Shirt	SD	PRA	BIA	FS	October 5	H	683	1			
Ft 16	SD	RBA	BIA	FS	November 16	H	676	0			
South Dakota Total							35,371	32			8
Sweetgrass	WY	CMX	County	FS	June 5	U	320	0			
Sely CA	WY	CRX	County	FS	June 5	L/N	425	0			
West	WY	CMX	County	FS	June 8	U	746	0			
Robinson	WY	HPD	BLM	CON/FS	June 8	L/N	1,038	0			

Appendix 2

Incident Name	State	Unit	Agency	Strategy	Start Date	Cause	Acres	Structures Destroyed	IMT Type	Incident Commander(s) IMT1 or IMT2	Days as IC on 209
Skull Creek	WY	WEX	County	FS	June 9	L/N	1,250	1			
Brokenback Creek	WY	CDS	State	FS	June 15	H	1,523	0			
Muddy Slide	WY	MRF	USFS	MON/CON	June 20	L/N	4,093	18	IMT2	Hohn/Haydon	11
Cellers	WY	MRF	USFS	FS	June 23	U	5,000	0			
Jenne Trail	WY	MRF	USFS	FS	July 3	L/N	556	0			
Wild Horse Creek	WY	MRF	USFS	FS	July 3	U	908	1			
Morgan Creek	WY	MRF	USFS	CON/FS	July 9	L/N	7,586	0	IMT2	Hagan	13
Neiber	WY	WBD	BLM	FS	July 14	U	17,545	0			
Crater Ridge	WY	BHF	USFS	FS	July 17	U	7,682	1	IMT2	Haydon	14
Saw Mill	WY	CPS	State	FS	July 18	U	1,308	0			
Dry Fork	WY	MRF	USFS	FS	July 18	L/N	3,207	0			
Deer Creek 2	WY	BFD	BLM	FS	July 26	U	5,298	0			
Pump Jack	WY	CMX	County	FS	July 28	H	480	0			
Bison	WY	CMX	County	FS	July 28	H	672	0			
313	WY	GOX	County	FS	July 28	H	3,735	0			
Beaver Creek	WY	BHX	County	FS	July 31	U	432	0			
Warm Oil	WY	HOX	County	FS	July 31	L/N	394	0			
Jenkins	WY	CMX	County	FS	August 10	U	400	0			
Black Mountain	WY	MRF	USFS	CON/FS	August 29	L/N	418	-			
Sand Creek	WY	SHF	USFS	FS	September 9	U	929	0			
Indian Head	WY	PLX	County	FS	September 11	L/N	330	0			
Remington	WY	BFD	BLM	FS	September 11	H	550	0			
Wyoming Total							66,825	21			38
Yearly Total							334,393	106			69

RMA RESOURCE ORDER BREAKDOWN

Aircraft Resource Order Summary

Catalog Category	Catalog Item	Enter	Place	Retrieve	UTF	Fill
Airtanker	SMIA - Load, Smokejumper, Initial Attack	17	25	4	2	10
	AT34 - Airtanker, Type 3 or 4	322	280	13	2	334
	ATM3 - Airtanker, Type 3 (Multi-Engine)	10	13		12	2
	ATS3 - Airtanker, Type 3 (Single Engine)	69	37		6	67
	ATTA - Airtanker, Any Type	22	12	1		27
	Airtanker, Type 3 Single, Multi or Type 4	37	29	4		47
	LA12 - Airtanker, Type 1 or 2	120	247	25	45	94
	LAT1 - Airtanker, Type 1	55	78	4	11	38
	VLAT - Airtanker, VLAT	12	12		8	3
Fixed Wing	FASM - Fixed Wing, Aerial Supervision Module	9	18	2		17
	FWAA - Fixed Wing, Air Tactical	336	426	34	13	312
	FWIR - Fixed Wing, Infrared	12	13		1	11
	FWLP - Fixed Wing, Leadplane	60	57	5	29	29
	FWRE - Fixed Wing, Reconnaissance	6	10			7
	FWSM - Fixed Wing, Smokejumper	7	7			3
Frequency	FQAA - Air to Air AM	63	56	2	1	
	FQAG - Air to Ground FM	51	47	2		
	FQTA - Tactical	20	23	4		
Helicopter	HE1R - Helicopter, Type 1 Restricted	180	166	16	12	161
	HE1S - Helicopter, Type 1 Standard	4	2	2		
	HE2S - Helicopter, Type 2 Standard	141	78	5	14	135
	HE3R - Helicopter, Type 3 Restricted	2	2		2	
	HE3S - Helicopter, Type 3 Standard	191	155	6	34	187
Service - Aviation	SIRF - Service - Infrared Flight	245	252	17	51	196
	SMRB - Service - Mobile Retardant Base	1	0			
	STFR - Service - Temporary Flight Restriction	91	88	5	1	81
Unmanned Aircraft	UAF3 - Unmanned Aircraft, Fixed Wing, Type 3	2	0			2
	UAR3 - Unmanned Aircraft, Rotor Wing, Type 3	6	5	1	2	1
Aircraft Summary		2,091	2,138	152	246	1,764

Appendix 3

Crew Resource Order Summary

Catalog Category	Catalog Item	Enter	Place	Retrieve	UTF	Fill
Fire Crews	CR12 - Crew, Type 1 or 2 Any	11	15	1	4	7
	CR1I - Crew, Type 1 or 2 IA	70	120	12	40	59
	CR2A - Crew, Type 2 Any	40	37	5	18	23
	CR2I - Crew, Type 2 IA	194	171	26	61	136
	CRW1 - Crew, Type 1	115	156	10	86	81
	CRW2 - Crew, Type 2	86	50	7	24	46
	CRWA - Crew, Type Any	16	10	2	1	14
Non-Fire Crew	CRWC - Crew, Camp	40	132	3	29	28
Crew Summary		572	691	66	263	394

Appendix 3

Equipment Resource Order Summary

Catalog Category	Catalog Item	Enter	Place	Retrieve	UTF	Fill
Dozer	DZR1 - Dozer, Type 1	2	3	1	1	1
	DZR2 - Dozer, Type 2	20	66	3	13	28
	DZR3 - Dozer, Type 3	27	19		3	26
	DZR4 - Dozer, Type 4	2	0			2
	DZRA - Dozer, Type Any	13	2			13
Engine	EN12 - Engine, Type 1 or 2	3	11		4	1
	EN36 - Engine, Type 3, 4, 5, or 6	174	1097	29	143	408
	ENG1 - Engine, Type 1	12	0			12
	ENG2 - Engine, Type 2	7	0			7
	ENG3 - Engine, Type 3	87	189	4	32	113
	ENG4 - Engine, Type 4	122	156	11	51	86
	ENG5 - Engine, Type 5	13	2			12
	ENG6 - Engine, Type 6	1010	903	52	113	1052
	ENG7 - Engine, Type 7	36	8		1	36
	ENGA - Engine, Type Any	116	51		15	100
Engine, Strike Team	EST3 - Engine, Strike Team, Type 3		1			
Food Service, Mobile	MFSU - Food Service, Mobile	14	16		1	3
Gray Water Truck	GWT2 - Gray Water Truck, Type 2	10	31		14	12
	GWTA - Gray Water Truck, Type Any	2	2			2
Medical	AMB1 - Ambulance, Type 1	18	32	2	9	16
	AMB2 - Ambulance, Type 2	2	4	1	3	2
	AMB3 - Ambulance, Type 3	1	1		2	
	AMBA - Ambulance, Type Any	14	10		2	13
	MEDV - Medic Vehicle		1			
	MESU - Medical Support Unit	3	0			5
	RESV - Rescue Vehicle	1	0			1
Miscellaneous	ARF3 - Aircraft Rescue and Firefighting Vehicle, Type 3		3			
	CHP1 - Chipper, Type 1		11		4	
	CHP2 - Chipper, Type 2	7	52		11	13
	CHP3 - Chipper, Type 3		2			1
	CHPA - Chipper, Type Any	3	2		1	3
	CLSU - Clerical Support Unit	5	3	1	1	7
	DUMP - Truck, Dump	3	0			3
	EXC1 - Excavator, Type 1		1			
	EXC2 - Excavator, Type 2	18	55	1	13	18
	EXC3 - Excavator, Type 3	1	16	1	2	2
	EXC4 - Excavator, Type 4	2	9			1
	EXCA - Excavator, Type Any	1	0			1
	FEL1 - Feller Buncher, Type 1	10	44	1	8	4
	FEL2 - Feller Buncher, Type 2		17		1	
	FELA - Feller Buncher, Type Any	11	54	3	17	10
	FORK - Forklift	14	1		1	11
FORW - Forwarder	8	6	1	11	6	

Appendix 3

Catalog Category	Catalog Item	Enter	Place	Retrieve	UTF	Fill
Miscellaneous	FRNT - Front End Loader		1			
	FUT1 - Fuel Tender, Type 1	4	13	2	4	4
	FUT2 - Fuel Tender, Type 2	6	24	2	8	3
	FUT3 - Fuel Tender, Type 3	7	14		5	6
	FUTA - Fuel Tender, Type Any	4	1	1		4
	GENR - Generator	48	0			38
	GRD1 - Road Grader, Type 1	2	0			2
	GRD2 - Road Grader, Type 2	2	8		1	2
	GRDA - Road Grader, Type Any	8	3		2	5
	HND1 - Handwashing Station (Trailer Mounted), Type 1	24	0			
	HND2 - Handwashing Station (Trailer Mounted), Type 2	16	15	1	2	29
	HNDA - Handwashing Station (Trailer Mounted), Type Any	17	14	3		20
	LAU1 - Laundry, Mobile, Type 1		3			
	LAU2 - Laundry, Mobile, Type 2		2			
	LITR - Lighting System, Trailer Mounted	53	13		13	43
	LOGT - Truck, Logging		3			
	MBM1 - Masticator - Boom Mounted, Type 1		6		1	
	MBM2 - Masticator - Boom Mounted, Type 2	1	38		6	
	MBM3 - Masticator - Boom Mounted, Type 3		3			
	MBMA - Masticator - Boom Mounted, Type Any		12			
	PIRD - Palm IR		1	1		
	REF1 - Trailer, Refrigerated, Type 1	12	20		6	13
	REF2 - Trailer, Refrigerated, Type 2	1	1		1	
	REFA - Trailer, Refrigerated, Type Any	3	4		2	3
	SKD1 - Skidder, Type 1	7	28		9	9
	SKD2 - Skidder, Type 2	3	24		2	3
	SKDA - Skidder, Type Any	12	45		16	4
	SKG1 - Skidgine, Type 1	3	9		3	
	SKG2 - Skidgine, Type 2	2	18		5	
	SKG3 - Skidgine, Type 3		4			
	SKGA - Skidgine, Type Any		9	1		3
	SKGS - Skidgine, Softtrack	5	5		1	5
	SKID - Skid-steer	5	4			6
	SMM2 - Strip Mulchers/Masticators, Type 2		2			1
SMM3 - Strip Mulchers/Masticators, Type 3	1	1			1	
STMH - Service Truck w/ Mechanic, Heavy	2	19		6	8	
STML - Service Truck w/ Mechanic, Light	3	10	1	2	3	

Appendix 3

Catalog Category	Catalog Item	Enter	Place	Retrieve	UTF	Fill
Miscellaneous	TNT2 - Tent, Type 2	8	0			
	TNTA - Tent, Type Any	3	0			3
	Truck / Trailer, Refrigeration	1	1	1	1	2
	Truck, Service	1	0			1
	WEED - Weed Washing Unit	8	5	2		11
Potable Water Truck	POT1 - Potable Water Truck, Type 1	2	2			4
	POT2 - Potable Water Truck, Type 2	9	16	1	6	10
	POT3 - Potable Water Truck, Type 3	1	0			1
	POTA - Potable Water Truck, Type Any	1	0			1
Shower, Mobile	MSFU - Shower, Mobile	13	14			
Telecommunications (CDF Only)	COM3 - Communications Unit, Mobile, Type 3	2	1		2	1
Tender, Water (Support)	WTS1 - Tender, Water (Support), Type 1	8	38	3	10	16
	WTS2 - Tender, Water (Support), Type 2	51	106	4	30	51
	WTS3 - Tender, Water (Support), Type 3	29	6			26
	W TSA - Tender, Water (Support), Type Any	29	41	2	11	20
	WTS2 - Tender, Water (Support), Type 2	1	0			
Tender, Water (Tactical)	WTT1 - Tender, Water (Tactical), Type 1	24	36	5	11	27
	WTT2 - Tender, Water (Tactical), Type 2	21	73	1	9	20
	WTTA - Tender, Water (Tactical), Type Any	19	40	1	10	18
	HOSU - Helicopter Operations Support Unit	6	6			7
Trailer	OFFT - Trailer, Mobile Office	8	7		4	9
	TRLR - Trailer	57	2			54
	Trailer - Command	13	5			11
	Trailer - Communications	5	0			5
	Trailer - Communications, Type Any	3	1	1	2	5
	Trailer - GIS		1			
	Trailer - Logistics	3	4		3	3
	Trailer - Mobile Sleeper Unit	6	3			6
	Trailer - Planning	1	0			1
Transportation	AUTO - Transportation, Vehicle, Automobile	11	0			5
	BUCC - Transportation, Bus, Crew Carrier	35	0			33
	LOW1 - Transportation, Lowboy, Type 1	3	0			3
	SUVL - Transportation, Vehicle, Sport Utility, Large (SUV)	6	0			4
	TRAC - Transportation, Tractor	2	2			
	TRAT - Transportation, Tractor/Trailer	3	0			3
	Transportation, Lowboy	2	1			
	Transportation, Pickup	633	13		3	581

Appendix 3

Catalog Category	Catalog Item	Enter	Place	Retrieve	UTF	Fill
	Transportation, Stakeside	7	5		2	3
	VANB - Transportation, Van, Box	21	0			5
	VANP - Transportation, Van, Passenger	3	0			1
	VATV - Transportation, Vehicle, All Terrain (ATV)	27	0			27
	VUTV - Transportation, Vehicle, Utility Terrain (UTV)	92	4	3		86
Equipment Summary		3221	3691	147	676	3310

Overhead Resource Summary

Catalog Category	Catalog Item	Enter	Place	Retrieve	UTF	Fill
CALIFORNIA ONLY	MERT - MEDICAL EMERGENCY RESPONSE TEAM		1			
Overhead Groups	BUYT - Team, Buying	12	17	1	3	14
	FMOD - Module, Faller	4	69	1	6	5
	FPET - Team, Fire Prevention/Education	6	13		1	3
	FUMD - Module, Fuels	6	46		1	30
	IMT1 - Team, Type 1 Long		5			4
	IMT2 - Team, Type 2 Long	7	16	2		14
	IMT3 - Team, Type 3	13	16	3		11
	MDRT - Team, Medical Response		1			
	REMS - Module, Rapid Extraction Support (GACC ONLY)	15	20		10	7
	SFAL - Faller, Single		2			
	SMOD - Module, Suppression	186	250	20	62	169
	SMT1 - Team, Type 1 Short	2	2			3
	SMT2 - Team, Type 2 Short	1	1			1
	SQAD - Squad	6	2			5
	SWT3 - Swift Water Rescue Team, Type 3	1	0			
	WFM1 - Module, Wildland Fire, Type 1	24	105	7	12	31
	WFM2 - Module, Wildland Fire, Type 2	71	123	8	22	63
Overhead Positions	AADM - AGENCY ADMINISTRATOR	4	34			21
	ABRO - AIRCRAFT BASE RADIO OPERATOR	10	92	2	11	4
	ACDP - AIRCRAFT DISPATCHER	88	185	3	35	50
	ACMR - ASSISTANT CACHE MANAGER	1	2			
	ACPC - ASSISTANT AREA COMMAND, PLANNING CHIEF		1			
	AEMF - ADVANCED EMERGENCY MEDICAL TECHNICIAN, FIRELINE	8	11		14	1
	AEMT - ADVANCED EMERGENCY MEDICAL TECHNICIAN		7	1		2
	AITS - AIR TACTICAL SUPERVISOR	18	6	1		23

Appendix 3

Catalog Category	Catalog Item	Enter	Place	Retrieve	UTF	Fill
Overhead Positions	AOBD - AIR OPERATIONS BRANCH DIRECTOR	27	40		6	29
	AOBS - AERIAL OBSERVER		6	1		
	ARCH - ARCHEOLOGIST	3	38		1	5
	AREP - AGENCY REPRESENTATIVE	9	17	2		18
	ARPA - PARA ARCHAEOLOGIST		2			
	ASCO - AIRSPACE COORDINATOR	2	3			
	ASGS - AIR SUPPORT GROUP SUPERVISOR	20	65		3	22
	ATBM - AIRTANKER BASE MANAGER	47	66	4		57
	ATGS - ATGS - AIR TACTICAL GROUP SUPERVISOR	317	179	10	23	294
	ATIM - AIRCRAFT TIME KEEPER	17	18		1	18
	BABI - BAER - BIOLOGIST		2			1
	BABO - BAER - BOTANIST		2			1
	BACS - BAER - CULTURAL RESOURCE SPECIALIST		3			1
	BAEL - BAER - TEAM LEADER		8			3
	BAES - BURNED AREA RESPONSE SPECIALIST	10	26	2	1	17
	BAFO - BAER - FORESTER		4	1		2
	BAGE - BAER - GEOLOGIST		2			1
	BAHY - BAER - HYDROLOGIST		2			1
	BCMG - BASE CAMP MANAGER	82	307	10	65	105
	BUYL - BUYING TEAM LEADER	27	8			30
	BUYM - BUYING TEAM MEMBER	49	45	3		57
	CACB - CAMP CREW BOSS	38	1	1		37
	CAMP - CAMP HELP	236	7			240
	CASC - CACHE SUPPLY CLERK		6			
	CDER - COMPUTER DATA ENTRY RECORDER		1			
	CDSP - CACHE DEMOBILIZATON SPECIALIST		3			1
	CISL - CRITICAL INCIDENT STRESS MANAGEMENT TEAM LEADER		2			1
	CISM - CRITICAL INCIDENT STRESS MANAGEMENT TEAM MEMBER		2			3
	CLMS - CLAIMS SPECIALIST		1			
	COMC - COMMUNICATIONS COORDINATOR	1	13			5
	COML - COMMUNICATIONS UNIT LEADER	28	76	1	5	29
	COMP - COMPENSATION/CLAIMS UNIT LEADER	17	75	2	8	24
	COMT - INCIDENT COMMUNICATIONS TECHNICIAN	59	244	2	29	84
	COPA - CONTRACTING OFFICER'S PURCHASING AGENT		3			1
CORD - EXPANDED DISPATCH COORDINATOR	9	5			4	
COST - COST UNIT LEADER	24	45	2	2	28	
CREP - CREW REPRESENTATIVE		2				
CRWB - CREW BOSS	782	52	5	10	802	
CTSP - COMPUTER TECHNICAL SPECIALIST	5	0			5	

Appendix 3

Catalog Category	Catalog Item	Enter	Place	Retrieve	UTF	Fill
Overhead Positions	CULS - CULTURAL SPECIALIST	2	0			2
	DECK - DECK COORDINATOR		52			6
	DIVS - DIVISION/GROUP SUPERVISOR	230	484	6	69	284
	DMOB - DEMOBILIZATION UNIT LEADER	29	111	1	15	37
	DOCL - DOCUMENTATION UNIT LEADER	18	100		9	19
	DPRO - DISPLAY PROCESSOR		31	1		
	DRIV - DRIVER/OPERATOR	173	82	19	28	162
	DRVA - DRIVER CLASS A	1	2			1
	DRVB - DRIVER CLASS B		1			
	DZIA - DOZER OPERATOR, INITIAL ATTACK	6	8			4
	DZOP - DOZER OPERATOR	4	11			8
	EDRC - EXPANDED DISPATCH RECORDER	59	60	6	14	50
	EDSD - SUPPORT DISPATCHER	144	258	5	115	74
	EDSP - SUPERVISORY DISPATCHER	41	90		26	27
	EMPF - PARAMEDIC, FIRELINE	69	182	3	44	56
	EMTB - EMERGENCY MEDICAL TECHNICIAN - BASIC	32	102	19	17	40
	EMTF - EMERGENCY MEDICAL TECHNICIAN, FIRELINE	83	269	6	92	84
	EMTI - EMERGENCY MEDICAL TECHNICIAN - INTERMEDIATE	4	13	1		10
	EMTP - EMERGENCY MEDICAL TECHNICIAN - PARAMEDIC	9	39	4	25	7
	ENGB - ENGINE BOSS	1025	144	1	24	1115
	ENOP - ENGINE OPERATOR	47	2	1		49
	EPID - EPIDEMIOLOGIST		2			1
	EQPI - EQUIPMENT INSPECTOR	5	45	2	5	3
	EQPM - EQUIPMENT MANAGER	47	202	5	35	57
	EQTR - EQUIPMENT TIME RECORDER	56	197	1	28	83
	ESFA - FEMA ESF #4 ADMINISTRATIVE SUPPORT		2			2
	ESFL - FEMA ESF #4 PRIMARY LEADER		11	1		2
	FACL - FACILITIES UNIT LEADER	54	171	4	17	75
	FAL1 - FALLER, ADVANCED	6	24	2	4	11
	FAL2 - FALLER, INTERMEDIATE	312	15			320
	FAL3 - FALLER, BASIC	215	20	3	6	217
	FBAN - FIRE BEHAVIOR ANALYST	18	69		9	18
	FCMG - FIRE CACHE MANAGER		2			2
	FDUL - FOOD UNIT LEADER	22	130	4	16	17
	FELB - FELLING BOSS (SINGLE RESOURCE)	2	161		5	5
	FEMO - FIRE EFFECTS MONITOR	41	8	1	5	39
	FFT1 - FIREFIGHTER, TYPE 1	2043	173	17	26	2135
	FFT2 - FIREFIGHTER, TYPE 2	4072	142	9	11	4182
	FIRB - FIRING BOSS	42	24			49
	FLEB - FIRELINE EXPLOSIVE BLASTER		1			
	FLOP - FORK LIFT OPERATOR		9			

Appendix 3

Catalog Category	Catalog Item	Enter	Place	Retrieve	UTF	Fill
Overhead Positions	FMNT - FACILITIES MAINTENANCE SPECIALIST		3			
	FOBS - FIELD OBSERVER	21	212		31	34
	FQCO - FREQUENCY COORDINATOR		1			
	FSC1 - FINANCE/ADMINISTRATION SECTION CHIEF, TYPE 1	11	4		1	8
	FSC2 - FINANCE/ADMINISTRATION SECTION CHIEF, TYPE 2	28	23		2	34
	FSC3 - FINANCE/ADMINISTRATION SECTION CHIEF TYPE 3	46	56	2	8	48
	FWPT - FIXED WING PARKING TENDER	115	165	11	14	119
	GISS - GIS SPECIALIST	84	215	6	28	119
	GMEC - GENERAL MECHANIC	1	2			1
	GSUL - GROUND SUPPORT UNIT LEADER	30	88		10	28
	HEB2 - HELIBASE MANAGER, 1 TO 5 HELICOPTERS		1			
	HEBM - HELIBASE MANAGER	31	137	2	33	17
	HECM - HELICOPTER CREWMEMBER	931	329	14	40	952
	HEQB - HEAVY EQUIPMENT BOSS, SINGLE RESOURCE	99	515	7	97	87
	HEQO - HEAVY EQUIPMENT OPERATOR (ALL HAZARD)	1	0			
	HERS - HELICOPTER RAPPEL SPOTTER	2	0			2
	HIOP - HAND-HELD INFRARED OPERATOR		2			
	HLCO - HELICOPTER COORDINATOR	1	43			1
	HLIA - HOSPITAL LIAISON		2			
	HMGB - HELICOPTER MANAGER, SINGLE RESOURCE	646	361	15	46	677
	HRAP - HELICOPTER RAPPELER	50	7		1	39
	HRSP - HUMAN RESOURCE SPECIALIST	1	26			11
	HYDR - HYDROLOGIST		2			
	IADP - INITIAL ATTACK DISPATCHER	114	233	8	75	84
	IARR - INTERAGENCY RESOURCE REPRESENTATIVE	33	3		1	5
	ICA2 - ALL-HAZARDS INCIDENT COMMANDER TYPE 2		0			1
	ICA3 - ALL-HAZARDS INCIDENT COMMANDER TYPE 3		2			
	ICPI - INCIDENT CONTRACT PROJECT INSPECTOR		14			
	ICT1 - INCIDENT COMMANDER, TYPE 1	10	1			12
	ICT2 - INCIDENT COMMANDER, TYPE 2	26	6		2	31
	ICT3 - INCIDENT COMMANDER, TYPE 3	106	112	4	36	100
	ICT4 - INCIDENT COMMANDER, TYPE 4	98	24		2	100
	ICT5 - INCIDENT COMMANDER, TYPE 5	155	8			156
IMET - INCIDENT METEOROLOGIST	20	52	3	1	27	
IMSA - INCIDENT MEDICAL SPECIALIST ASSISTANT		3				
IMSM - INCIDENT MEDICAL SPECIALIST MANAGER		5				

Appendix 3

Catalog Category	Catalog Item	Enter	Place	Retrieve	UTF	Fill
Overhead Positions	IMST - INCIDENT MEDICAL SPECIALIST TECHNICIAN		5	1		
	INBA - INCIDENT BUSINESS ADVISOR	21	30		3	21
	INCM - INCIDENT COMMUNICATIONS MANAGER	21	153	2	28	23
	INJR - COMPENSATION FOR INJURY SPECIALIST		2			
	INTS - INTELLIGENCE SUPPORT	5	9			3
	INVF - WILDLAND FIRE INVESTIGATOR	84	38	1	6	83
	IRIN - INFRARED INTERPRETER	6	15	1	8	4
	ITSS - INCIDENT TECHNOLOGY SUPPORT SPECIALIST	29	69		9	35
	LEO1 - LAW ENFORCEMENT OFFICER LEVEL 1 (ALL HAZARD)	3	4		7	
	LOFR - LIAISON OFFICER	39	28	1	4	34
	LPIL - LEADPLANE PILOT	29	2	1		35
	LSC1 - LOGISTICS SECTION CHIEF, TYPE 1	16	8			15
	LSC2 - LOGISTICS SECTION CHIEF, TYPE 2	48	52		3	70
	LSC3 - LOGISTICS SECTION CHIEF TYPE 3	49	63	1	13	49
	LTAN - LONG TERM FIRE ANALYST	5	22		6	2
	MABM - MAFFS AIRTANKER BASE MANAGER	2	2			3
	MABS - MAFFS TANKER BASE SPECIALIST	1	4			3
	MAFF - MAFFS LIAISON OFFICER	2	0			
	MALO - MODULAR AIRBORNE FIRE FIGHTING SYSTEM ASSISTANT LIAISON OFFICER	1	0			
	MCCO - MAC GROUP COORDINATOR	1	1			2
	MEDL - MEDICAL UNIT LEADER	73	167	4	30	76
	MXMS - MIXMASTER	35	21		8	37
	OPBD - OPERATIONS BRANCH DIRECTOR	14	55	1	2	16
	OPS3 - OPERATIONS SECTION CHIEF, TYPE 3 (WILDLAND FIRE)	13	21	3	7	12
	ORDM - ORDERING MANAGER	47	140	1	31	36
	OSC1 - OPERATIONS SECTION CHIEF, TYPE 1	17	3		2	13
	OSC2 - OPERATIONS SECTION CHIEF, TYPE 2	54	88	1	1	73
	OSC3 - OPERATIONS SECTION CHIEF, TYPE 3 (ALL HAZARD)	4	6		2	3
	PARK - PARKING TENDER		2			
	PETL - PREVENTION EDUCATION TEAM LEADER	7	8	1	3	4
	PETM - PREVENTION EDUCATION TEAM MEMBER	19	16	1	1	18
	PILO - FIXED OR ROTOR WING PILOT	15	2	1		7
	PIO1 - PUBLIC INFORMATION OFFICER, TYPE 1	33	83		4	55
PIO2 - PUBLIC INFORMATION OFFICER, TYPE 2	91	262	4	30	126	
PIO3 - PUBLIC INFORMATION OFFICER, TYPE 3 (ALL HAZARD)	3	6		3	1	
PIOF - PUBLIC INFORMATION OFFICER	66	246	3	51	95	

Appendix 3

Catalog Category	Catalog Item	Enter	Place	Retrieve	UTF	Fill
Overhead Positions	PLDO - PLASTIC SPHERE DISPENSER OPERATOR	1	12		1	4
	PREV - PREVENTION TECHNICIAN	37	128	1	48	2
	PROC - PROCUREMENT UNIT LEADER	7	38		6	5
	PSC1 - PLANNING SECTION CHIEF, TYPE 1	16	12		1	16
	PSC2 - PLANNING SECTION CHIEF, TYPE 2	27	28			30
	PSC3 - PLANNING SECTION CHIEF, TYPE 3	49	77	4	13	46
	PTRC - PERSONNEL TIME RECORDER	52	149	4	20	74
	RADO - RADIO OPERATOR	78	460	4	113	115
	RAMP - RAMP MANAGER	44	89	5	14	34
	RCDM - RECEIVING/DISTRIBUTION MANAGER	50	174	4	29	42
	READ - RESOURCE ADVISOR	28	43		9	33
	REAF - RESOURCE ADVISOR, WILDFIRE	14	91	1	14	39
	REMS - Module, Rapid Extraction Support (GACC ONLY)	1	0			1
	RESL - RESOURCE UNIT LEADER	51	116		10	55
	RTCM - RETARDANT CREWMEMBER	27	15		2	29
	RXB1 - PRESCRIBED FIRE BURN BOSS, TYPE 1		2			1
	RXB2 - PRESCRIBED FIRE BURN BOSS, TYPE 2	36	46	2		52
	RXB3 - PRESCRIBED FIRE BURN BOSS, TYPE 3	2	1			2
	RXCM - PRESCRIBED FIRE CREW MEMBER	1	1			1
	SCKN - STATUS CHECK-IN RECORDER	26	109	1	7	46
	SEC1 - SECURITY SPECIALIST - LEVEL 1	57	313	5	51	56
	SEC2 - SECURITY SPECIALIST - LEVEL 2	48	258	5	75	20
	SECG - SECURITY GUARD (NOT LAW ENFORCEMENT)		22			
	SECM - SECURITY MANAGER	20	95	1	9	12
	SEMG - SINGLE ENGINE AIR TANKER MANAGER	73	97	2	9	68
	SHLR - SHORT HAULER		0			1
	SITL - SITUATION UNIT LEADER	28	115	2	12	35
	SMKJ - SMOKEJUMPER	16	142	8	24	7
	SOF1 - SAFETY OFFICER, TYPE 1	7	24			9
	SOF2 - SAFETY OFFICER, TYPE 2	49	206		14	61
	SOF3 - SAFETY OFFICER, TYPE 3 (ALL HAZARD)	1	9		2	
	SOFR - SAFETY OFFICER, LINE	78	275	4	79	53
	SOPL - STRATEGIC OPERATIONAL PLANNER	6	38		5	8
	SPUL - SUPPLY UNIT LEADER	35	95		18	33
STAM - STAGING AREA MANAGER	5	48		4	4	
STCR - STRIKE TEAM LEADER, CREW	4	10			4	
STEN - STRIKE TEAM LEADER, ENGINE	7	94	2	16	9	
STEQ - STRIKE TEAM LEADER, HEAVY EQUIPMENT		7				

Appendix 3

Catalog Category	Catalog Item	Enter	Place	Retrieve	UTF	Fill
Overhead Positions	STPS - STRUCTURAL PROTECTION SPECIALIST	8	37			8
	TFLD - TASK FORCE LEADER	259	683	13	115	297
	THSP - TECHNICAL SPECIALIST	232	384	13	21	267
	TIME - TIME UNIT LEADER	31	56		8	27
	TNSP - TRAINING SPECIALIST	5	48	1	4	6
	TOLC - TAKEOFF AND LANDING COORDINATOR		1			
	TRQA - TEMPORARY ROOFING QUALITY ASSURANCE INSPECTOR (ALL HAZARD)	16	0			16
	UASD - UNMANNED AIRCRAFT SYSTEM, DATA SPECIALIST		7		1	1
	UASL - UNMANNED AIRCRAFT SYSTEM, MODULE LEADER	1	1			3
	UASM - UNMANNED AIRCRAFT SYSTEM, MANAGER		5			1
	UASP - UNMANNED AERIAL SYSTEMS PILOT	21	53	5	3	38
	UTVO - UTILITY TERRAIN VEHICLE OPERATOR	2	1			2
	WHHR - WAREHOUSE MATERIALS HANDLER	1	16	1		15
	WHLR - WAREHOUSE MATERIALS HANDLER LEADER		17			16
	WTOP - WATER TENDER OPERATOR	2	0			2
Overhead Summary		16,275	14,895	405	2,423	16,993