



# Pike and San Isabel National Forests - San Isabel South

## Air Frequency Zone Map



Colorado Zone 1  
AIR-AIR 1: 118.7250  
AIR-AIR 2: 128.4000  
AIR-AIR 3: 132.1500  
AIR-GROUND 56: 168.6625  
AIR-GROUND 58: 169.0875

Colorado Zone 2  
AIR-AIR 1: 126.7750  
AIR-AIR 2: 128.1750  
AIR-AIR 3: 134.4000  
AIR-GROUND 07: 166.8500  
AIR-GROUND 13: 167.4250

Colorado Zone 3  
AIR-AIR 1: 126.4750  
AIR-AIR 2: 127.2250  
AIR-AIR 3: 132.3750  
AIR-GROUND 49: 168.0375  
AIR-GROUND 09: 166.9125

Colorado Zone 4  
AIR-AIR 1: 126.2750  
AIR-AIR 2: 128.0000  
AIR-AIR 3: 133.3250  
AIR-GROUND 15: 167.5250  
AIR-GROUND 07: 166.8500  
AIR-GROUND 13: 167.4250

Colorado Zone 5  
AIR-AIR 1: 127.3250  
AIR-AIR 2: 134.7750  
AIR-AIR 3: 134.2750  
AIR-GROUND 09: 166.9125  
AIR-GROUND 07: 166.8500

Colorado Zone 6  
AIR-AIR 1: 126.0250  
AIR-AIR 2: 124.3750  
AIR-AIR 3: 133.7500  
AIR-GROUND 35: 167.2250  
AIR-GROUND 58: 169.0875

(R) Repeater

(B) Base

Air Frequency Zones

Major Highways

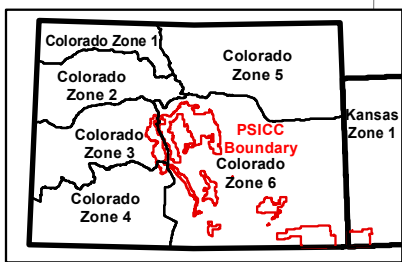
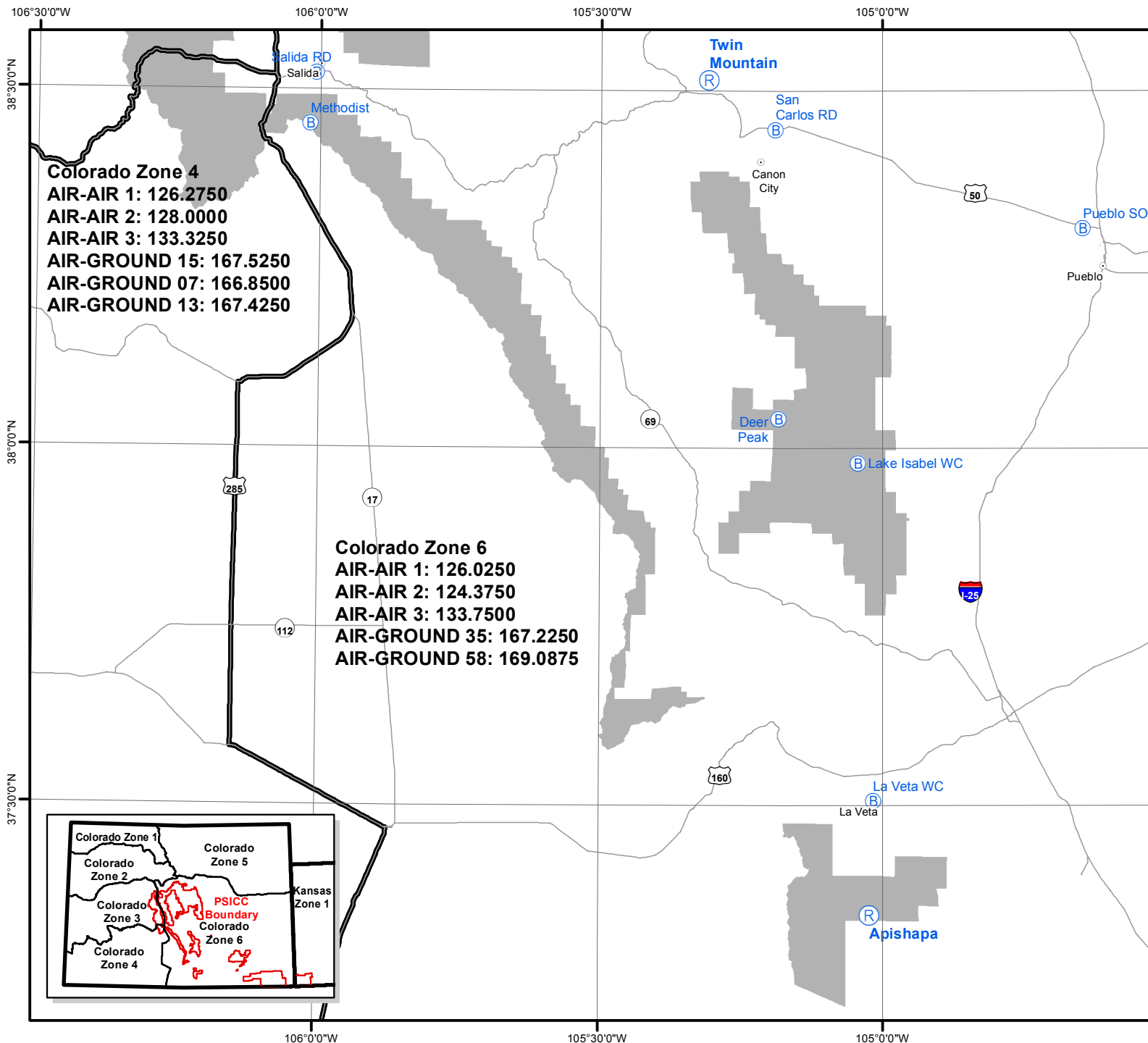
PSI Admin Boundary

0 2.5 5 10  
Nautical Miles  
1:850,000

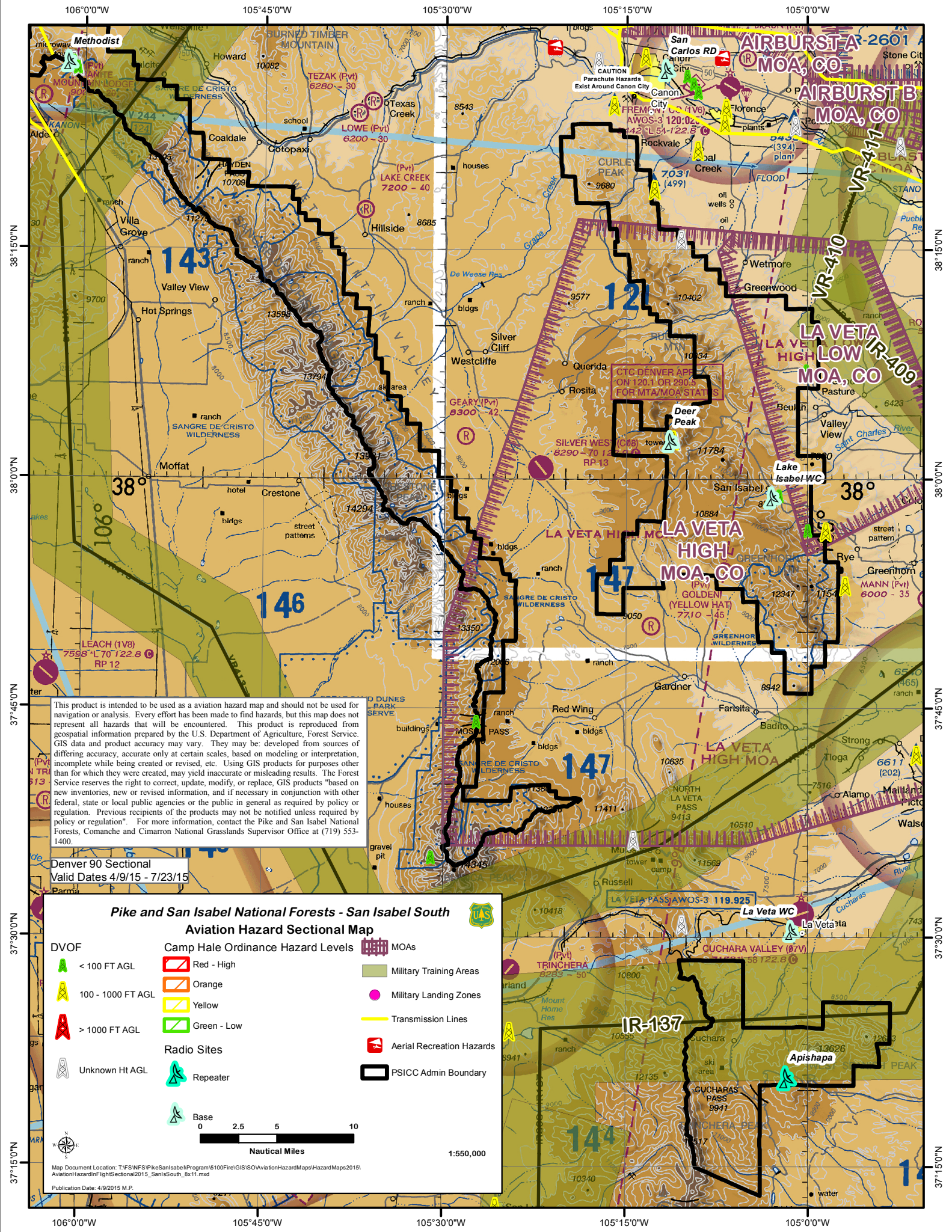
This product is intended to be used as a aviation hazard map and should not be used for navigation or analysis. Every effort has been made to find hazards, but this map does not represent all hazards that will be encountered. This product is reproduced from geospatial information prepared by the U.S. Department of Agriculture, Forest Service. GIS data and product accuracy may vary. They may be developed from sources of differing accuracy, accurate only at certain scales, based on modeling or interpretation, incomplete while being created or revised, etc. Using GIS products for purposes other than for which they were created, may yield inaccurate or misleading results. The Forest Service reserves the right to correct, update, modify or replace GIS products based on new verifications, new or revised information, and if necessary in conjunction with other federal, state or local public agencies or the public as required by policy or regulation. Previous recipients of the products may not be notified unless required by policy or regulation. For more information, contact the Pike and San Isabel National Forests, Comanche and Cimarron National Grasslands Supervisor Office at (719) 533-1800.

Map Document Location: T:\FS\NFS\Pike\SanIsabel\Program\5100Fire\GIS\SOI\AviationHazardMaps\HazardMaps2015\AviationHazardInFlightAirFreq2015\_SanIsSouth\_8x11.mxd

Publication Date: 4/8/2015 M.P.





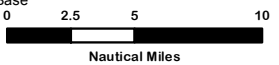


This product is intended to be used as an aviation hazard map and should not be used for navigation or analysis. Every effort has been made to find hazards, but this map does not represent all hazards that will be encountered. This product is reproduced from geospatial information prepared by the U.S. Department of Agriculture, Forest Service. GIS data and product accuracy may vary. They may be developed from sources of differing accuracy, accurate only at certain scales, based on modeling or interpretation, incomplete while being created or revised, etc. Using GIS products for purposes other than for which they were created, may yield inaccurate or misleading results. The Forest Service reserves the right to correct, update, modify, or replace, GIS products "based on new inventories, new or revised information, and if necessary in conjunction with other federal, state or local public agencies or the public in general as required by policy or regulation. Previous recipients of the products may not be notified unless required by policy or regulation". For more information, contact the Pike and San Isabel National Forests, Comanche and Cimarron National Grasslands Supervisor Office at (719) 553-1400.

Denver 90 Sectional  
Valid Dates 4/9/15 - 7/23/15

### Pike and San Isabel National Forests - San Isabel South Aviation Hazard Sectional Map

- |                   |  |                           |
|-------------------|--|---------------------------|
| <b>DVOF</b>       | <b>Camp Hale Ordinance Hazard Levels</b> | <b>MOAs</b>               |
| < 100 FT AGL      | Red - High                               | Military Training Areas   |
| 100 - 1000 FT AGL | Orange                                   | Military Landing Zones    |
| > 1000 FT AGL     | Yellow                                   | Transmission Lines        |
| > 1000 FT AGL     | Green - Low                              | Aerial Recreation Hazards |
| Unknown Ht AGL    | <b>Radio Sites</b>                       | PSICC Admin Boundary      |
|                   | Repeater                                 |                           |
|                   | Base                                     |                           |



1:550,000

Map Document Location: T:\FS\NFS\PIkeSanIsabel\Program\5100Fire\GIS\ISO\AviationHazard\Maps\HazardMaps\2015\AviationHazardInFlightSectional2015\_SanIsabelSouth\_Box11.mxd  
Publication Date: 4/9/2015 M.P.