



Pike and San Isabel National Forests - Pike

Air Frequency Zone Map



Colorado Zone 1
AIR-AIR 1: 118.7250
AIR-AIR 2: 128.4000
AIR-AIR 3: 132.1500
AIR-GROUND 56: 168.6625
AIR-GROUND 58: 169.0875

Colorado Zone 2
AIR-AIR 1: 126.7750
AIR-AIR 2: 128.1750
AIR-AIR 3: 134.4000
AIR-GROUND 07: 166.8500
AIR-GROUND 13: 167.4250

Colorado Zone 3
AIR-AIR 1: 126.4750
AIR-AIR 2: 127.2250
AIR-AIR 3: 132.3750
AIR-GROUND 49: 168.0375
AIR-GROUND 09: 166.9125

Colorado Zone 4
AIR-AIR 1: 126.2750
AIR-AIR 2: 128.0000
AIR-AIR 3: 133.3250
AIR-GROUND 15: 167.5250
AIR-GROUND 07: 166.8500
AIR-GROUND 13: 167.4250

Colorado Zone 5
AIR-AIR 1: 127.3250
AIR-AIR 2: 134.7750
AIR-AIR 3: 134.2750
AIR-GROUND 09: 166.9125
AIR-GROUND 07: 166.8500

Colorado Zone 6
AIR-AIR 1: 126.0250
AIR-AIR 2: 124.3750
AIR-AIR 3: 133.7500
AIR-GROUND 35: 167.2250
AIR-GROUND 58: 169.0875

(R) Repeater

(B) Base

Major Highways

Air Frequency Zones

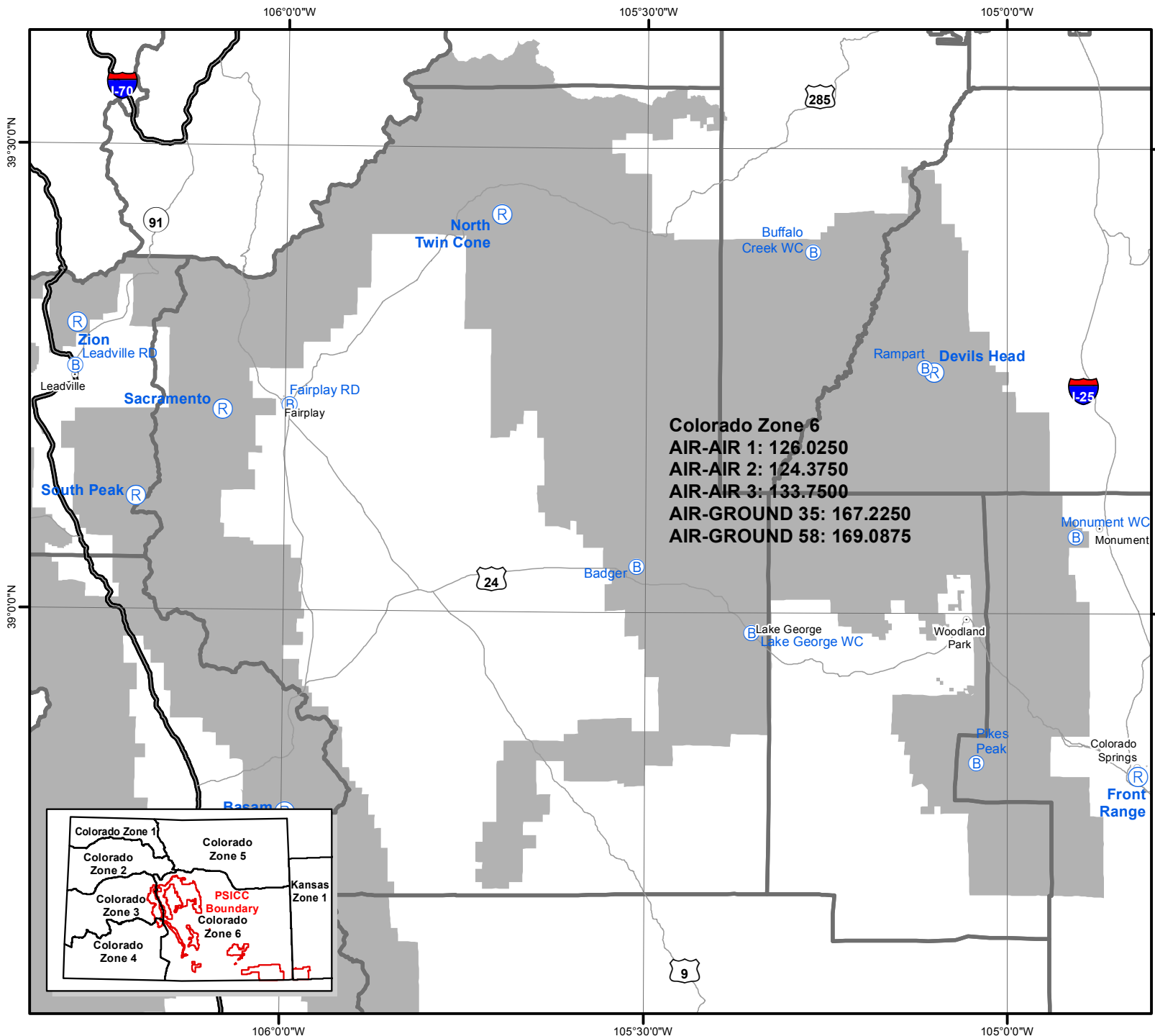
PSI Admin Boundary

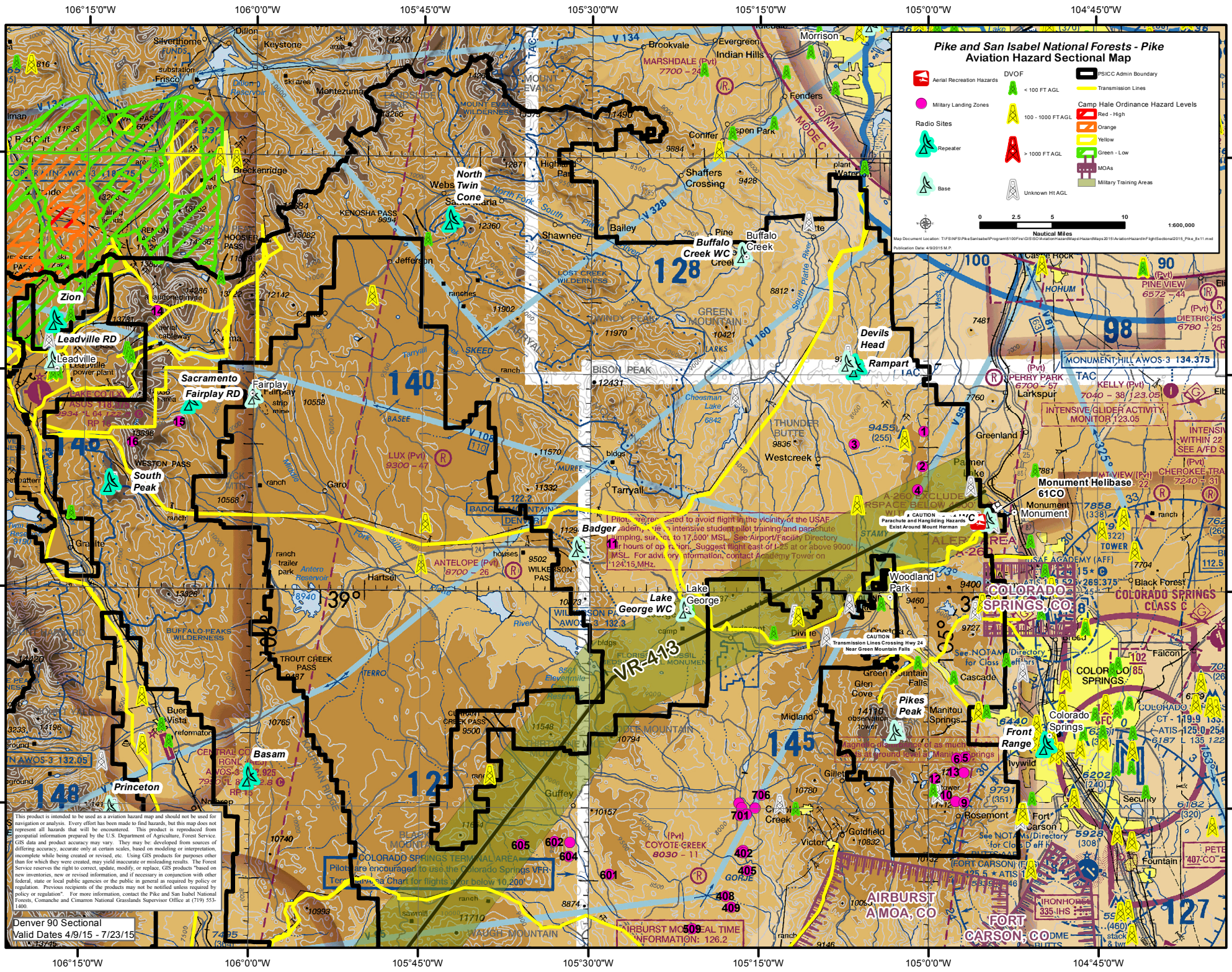
0 2.5 5 10
Nautical Miles
1:650,000

This product is intended to be used as a mission based map and should not be used for navigation or analysis. Every effort has been made to find hazards, but this map does not represent all hazards that will be encountered. This product is reproduced from geospatial information prepared by the U.S. Department of Agriculture, Forest Service. GIS data and product accuracy may vary. They may be developed from sources of differing accuracy, accurate only at certain scales, based on modeling or interpretation, incomplete while being created or revised, etc. Using GIS products for purposes other than for which they were created, may yield inaccurate or misleading results. The Forest Service reserves the right to correct, update, modify or replace GIS products based on new interests, new or revised information, and if necessary in conjunction with other federal, state or local public agencies or the public as required by policy or regulation. Previous recipients of the products may not be notified unless required by policy or regulation. For more information, contact the Pike and San Isabel National Forests, Conchote and Cimarron National Grasslands Supervisor Office at (719) 533-1800.

Map Document Location: T:\FS\NFS\Pike\SanIsabel\Program\5100Fire\GIS\SOI\AviationHazardMaps\HazardMaps2015\AviationHazardInFlightAirFreq2015_Pike_8x11.mxd

Publication Date: 4/8/2015 M.P.





Pike and San Isabel National Forests - Pike Aviation Hazard Sectional Map

	DVOF	

Map Document Location: T:\P\N\F\PIke\SanIsabel\Fig\AviationHazard\Fig\PikeSectional2015_Pike_Sect1.mxd
Publication Date: 4/30/2015 M.P.

0 2.5 5 10 1600,000
Nautical Miles

This product is intended to be used as an aviation hazard map and should not be used for navigation or analysis. Every effort has been made to find hazards, but this map does not represent all hazards that will be encountered. This product is reproduced from geospatial information prepared by the U.S. Department of Agriculture, Forest Service. GIS data and product accuracy may vary. They may be developed from sources of differing accuracy, accurate only at certain scales, based on modeling or interpretation, incomplete while being created or revised, etc. Using GIS products for purposes other than for which they were created may yield inaccurate or misleading results. The Forest Service reserves the right to correct, update, modify, or replace, GIS products based on new inventories, new or revised information, and if necessary in conjunction with other federal, state or local public agencies or the public in general as required by policy or regulation. Previous recipients of the products may not be notified unless required by policy or regulation. For more information, contact the Pike and San Isabel National Forests, Commerce and Cimarron National Grasslands Supervisor Office at (719) 553-1400.

Denver 90 Sectional
Valid Dates 4/9/15 - 7/23/15

Pilots are requested to avoid flight in the vicinity of the USAF Academy, the intensive student pilot training and parachute jumping, sun set to 17,500' MSL. See Airport/Facility Directory for hours of operation. Suggest flight east of 125 at or above 9000' MSL. For additional information, contact Academy Tower on 124.15 MHz.

Pilots are encouraged to use the Colorado Springs VFR Terminal Area Chart for flights above 10,200'.

AIRBURST AMOA, CO

FORT CARSON, CO