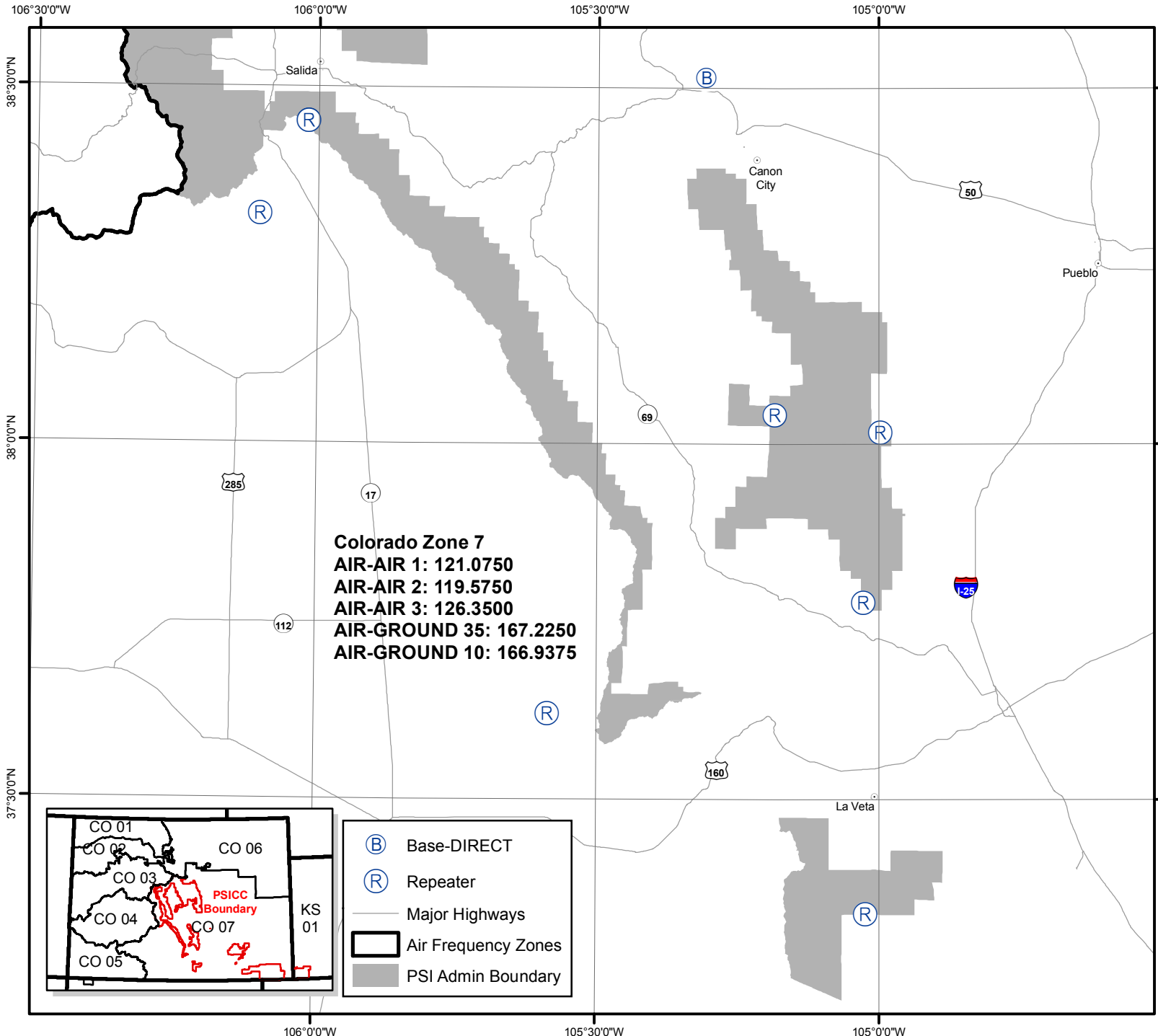




Pike and San Isabel National Forests - San Isabel South

2018 Air Frequency Zone Map



Colorado Zone 1
 AIR-AIR 1: 118.7250
 AIR-AIR 2: 128.3000
 AIR-AIR 3: 132.1500
 AIR-GROUND 56: 168.6625
 AIR-GROUND 58: 169.0875

Colorado Zone 2
 AIR-AIR 1: 126.7750
 AIR-AIR 2: 128.1750
 AIR-AIR 3: 134.4000
 AIR-GROUND 07: 166.8500
 AIR-GROUND 13: 167.4250

Colorado Zone 3
 AIR-AIR 1: 118.6750
 AIR-AIR 2: 127.2250
 AIR-AIR 3: 132.3750
 AIR-GROUND 49: 168.0375
 AIR-GROUND 09: 166.9125

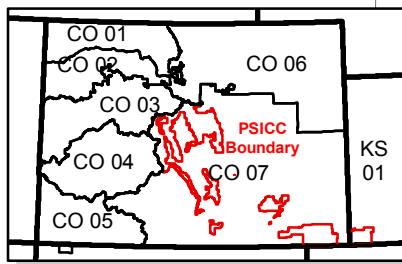
Colorado Zone 4
 AIR-AIR 1: 126.2750
 AIR-AIR 2: 128.0000
 AIR-AIR 3: 133.3250
 AIR-GROUND 15: 167.5250
 AIR-GROUND 07: 166.8500
 AIR-GROUND 13: 167.4250

Colorado Zone 5
 AIR-AIR 1: 127.3250
 AIR-AIR 2: 134.7750
 AIR-AIR 3: 134.2750
 AIR-GROUND 09: 166.9125
 AIR-GROUND 07: 166.8500

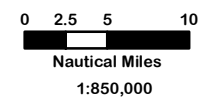
Colorado Zone 6
 AIR-AIR 1: 126.0250
 AIR-AIR 2: 124.3750
 AIR-AIR 3: 133.7500
 AIR-GROUND 09: 166.9125
 AIR-GROUND 58: 169.0875

Colorado Zone 7
 AIR-AIR 1: 121.0750
 AIR-AIR 2: 119.5750
 AIR-AIR 3: 126.3500
 AIR-GROUND 35: 167.2250
 AIR-GROUND 10: 166.9375

Colorado Zone 7
 AIR-AIR 1: 121.0750
 AIR-AIR 2: 119.5750
 AIR-AIR 3: 126.3500
 AIR-GROUND 35: 167.2250
 AIR-GROUND 10: 166.9375



	Base-DIRECT
	Repeater
	Major Highways
	Air Frequency Zones
	PSI Admin Boundary



This product is intended to be used as a situation based map and should not be used for navigation or analysis. Every effort has been made to find hazards, but this map does not represent all hazards that will be encountered. This product is reproduced from geospatial information prepared by the U.S. Department of Agriculture, Forest Service. GIS data and product accuracy may vary. They may be developed from sources of differing accuracy, accurate only at certain scales, based on modeling or interpretation, incomplete while being created or revised, one. Using GIS products for purposes other than for which they were created, may yield inaccurate or misleading results. The Forest Service reserves the right to correct, update, modify, or replace GIS products based on new resources, new or revised information, and if necessary in conjunction with other Federal, state or local public agencies or the public as required by policy or regulation. Previous recipients of the products may not be notified unless required by policy or regulation. For more information, contact the Pike and San Isabel National Forests, Comanche and Cimarron National Grasslands Supervisor Office at (719) 551-1400.