



# MONTROSE INTERAGENCY DISPATCH AREA BRIEFING PACKET 2021



BLM – Uncompahgre & Gunnison Field Offices  
USFS – Grand Mesa, Uncompahgre & Gunnison  
National Forests  
NPS – Black Canyon of the Gunnison National Park  
& Curecanti National Recreation Area  
Colorado Division of Fire Prevention and Control

**This packet is intended to familiarize you with the local organizations and their operating procedures**

## **Table of Contents**

Pg. 3-Introduction

Pg. 5-BLM Operating Procedures

Pg. 7-NPS Operating Procedures

Pg. 9-Oil and Gas Safety Protocols

Pg. 11-Weather, Fuels, Fire Behavior/Tactics overview

Pg. 14-Montrose Dispatch Daily Operations and Procedures

Pg. 15-Incident Procedures/Response

Pg. 17-Resource ordering/Mobilization

Pg. 20-DO/Dispatch Responsibilities

Pg. 22-Overdue/Missing Resource Procedures

### **Appendices/Reference Material**

Pg. 23-BLM Surface Maps/QR Codes

Pg. 24-FS Surface Maps/QR Codes

Pg. 25-FS Cont. and Various Map QR Codes

Pg. 26-Pocket Cards

Pg. 28-Radio Frequencies

Pg. 29-Repeater location Map

Pg. 30-Unit Med. Plan

Pg. 32-BLM Phone Lists/Contact info.

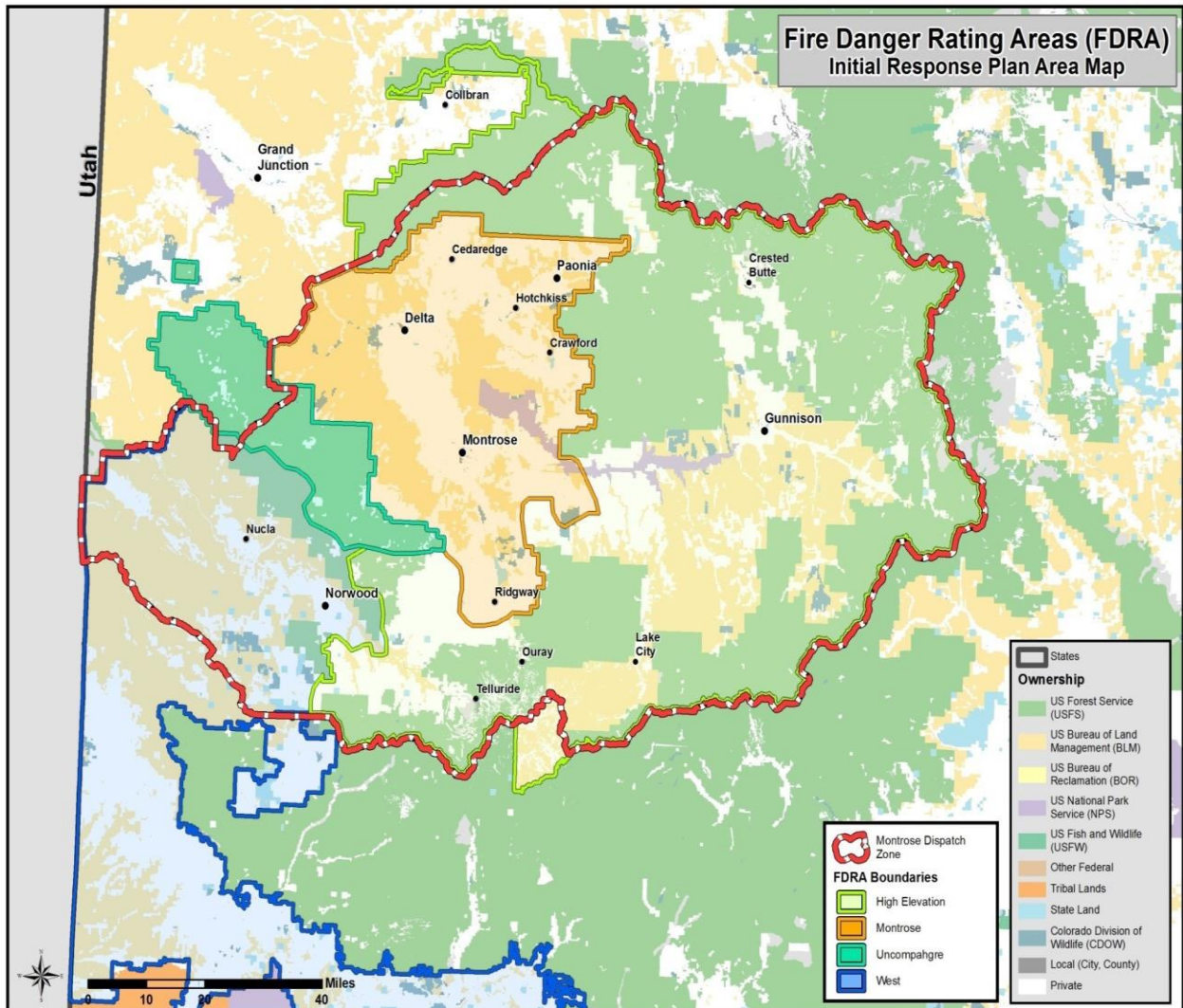
Pg. 34-FS Phone Lists/Contact info.

Pg. 37-DFPC Phone Lists/Contact info.

Pg. 38-NPS/Ridgway SP Phone Lists/Contact info.

# Introduction

The enclosed materials should provide you with an introductory reference for most of the information you will initially need during your transition into assignments/incidents occurring. This introductory briefing guide is designed to provide basic information to get resources oriented when initially assigned. This briefing guide is a supplement and NOT a substitute for the specific briefing guidance you will receive when you are assigned to one of the interagency fire management zones located in our dispatch area. In addition you will receive an overall briefing from the unit you are specifically assigned to. You may then receive further, more site-specific briefings from these individual units and or incidents. Most of the local units you assist carry out daily briefings on weather, fuel/fire behavior conditions, safety items, assignments, etc. Please make sure that you get any questions answered or clarified that may not be covered in these briefings.



**Montrose Interagency Dispatch Center (MTC) provides support for the following units:**

**Southwest District BLM**

Uncompahgre Field Office, Gunnison Field Office

Tres Rios Field Office (Durango Interagency Dispatch supports this field office also)

**GMUG National Forest**

Gunnison, Ouray, Norwood, and Paonia Ranger Districts

Grand Valley Ranger District (Grand Junction Interagency Dispatch supports this ranger district also)

**National Park Service**

Black Canyon National Park and Curecanti National Recreation Area

**Cooperators**

Colorado Division of Fire Prevention and Control (DFPC)

County Volunteer Fire Departments (VFD) and Fire Protection Districts (FPD)

**Delta (DTX) County Dispatch 970-874-2015**

FPD: Cedaredge, Crawford, Delta, Hotchkiss, Paonia

**Gunnison (GUX) County Dispatch 970-641-8000**

VFD: Almont, Pitkin            FPD: Arrowhead, Crested Butte, Gunnison, Ragged Mountain

**Hinsdale (HIX) County Dispatch 970-944-2291**

FPD: Lake City

**Montrose (MRX)/ Westco Dispatch 970-249-9110**

FPD: Montrose, Olathe, Norwood, Naturita, Paradox

Miscellaneous: Horsefly Fire Association and Montrose Airport Fire Department

**Ouray (OUX)/ Westco Dispatch 970-249-9110**

VFD: Ouray            FPD: Loghill, Ridgeway

**Saguache (SHX) County Dispatch 719-655-2544**

FPD: Gunnison

**San Miguel (SLX) County Dispatch 970-728-1911**

FPD: Egnar, Norwood

## **BLM Operating Procedures**

### **BLM Operating Procedures**

The SWD BLM Fire Management Officer will perform the duties of an ODO or will provide a delegated ODO for the units during the determined period of predicted incident activities. ODO responsibilities may be performed by qualified individuals with a signed Delegation of Authority from the local Agency Administrator. SWD BLM qualifications for the ODO are identified below. Where suppression duties have been delegated to another agency, that agency's qualifications standards apply. The nationally required duties for all BLM ODOs are:

- Monitor unit incident activities for compliance with BLM safety policies.
- Coordinate and set priorities for unit suppression actions and resource allocation and coordinate those priorities within the Montrose Multi-Agency Coordination Group as needed.
- Keep unit Agency Administrators, suppression resources, and information officers informed of the current and expected situation.
- Plan for and implement actions required for future needs.
- Document all decisions and actions.

### **Operational Duty Officer Process for SWD BLM**

#### **Purpose and Delegated Duties of the DO**

The Duty Officer is BLM- SWD's fire management link between the Agency Administrator and the Incident. The Agency Administrator is the Line authority and the final decision maker for every incident and communicates strategic concerns, objectives, direction and resource issues to the IC and DO. The BLM has one Duty Officer for both the Uncompahgre Field Office and Gunnison Field Office. The NPS has delegated the Duty Officer responsibilities to BLM for Black Canyon National Park and Curecanti National Recreational Area.

#### **Process with IC**

With closest forces, initial attack resources respond on behalf of the BLM as allowed by our AOP. The Initial Attack IC communicates with Montrose Dispatch and the BLM Duty Officer. That BLM Duty Officer communicates with the Agency Administrator to keep them informed and determine management direction for the incident.

All Incidents will be managed by the designated Duty Officer until a qualified Initial Attack Incident Commander arrives on-scene or anytime the incident becomes unstaffed. All incidents considered for a strategy other than a pre-planned response will require approval from the respective Agency Administrator.

Incidents are initially assessed on-site by the IC and the fire sizeup is communicated to Dispatch and relayed to the agency DO. The initial attack IC may be required to take immediate action in critical situations within their capacity and is delegated to make those on-site immediate decisions. The DO is delegated the authority to consider all response options and given current and future critical needs, be authorized to take appropriate actions. Once a fire is determined to have the potential as an extended fire, the Agency will determine that direction. Any resource assigned to a fire will be working for the Incident Commander and the Incident Commander will be working for the agency of jurisdiction.

The Duty Officer from the receiving agency of jurisdiction is also communicating with the sending agency Duty Officer when their resources are committed, dispatched or en route.

### **Extended Attack/Transitions**

MTC area has a mutual aid agreement with all cooperators designed to provide quick support as incidents transition to extended attack. 24 hours is the general time that this agreement lasts frame but may vary for your incident. As an IC please understand you may or may not keep the resources that have initial attacked the fire and communicate your needs for specific equipment or overhead to remain on the fire with the duty officer. The availability conversations between agencies Duty Officers needs to happen early so that if those resources are unavailable, other resources can be ordered.

### **Communications**

Please refrain from using cell phones to communicate important incident information including IC changes, resource requests, and or any other tactical information. This would exclude information exchange that would tie up radios for an extended period of time such as spot weather observations, supply lists, etc.

### **After Hours**

Smoke reports received after resources have gone off the clock will be reported to the Duty Officer and Duty officer will contact resources to respond.

### **Qualifications**

Minimum qualifications for ODO in the SWD-CO BLM are:

- Strike Team or Task Force
- ICT4

DOs will provide operational oversight of these requirements as well as any unit specific duties assigned by the local fire managers through this annual operating plan. DOs will not fill any ICS incident command functions connected to any incident. In the event that the DO is required to accept an incident assignment, the SWD FMO will ensure that another qualified and authorized DO is in place prior to the departure of the outgoing DO.

## **NPS Operating Procedures**

### **Black Canyon of the Gunnison National Park and Curecanti National Recreation Area**

There are two National Park Service units in the Montrose Dispatch area: Black Canyon of the Gunnison National Park and Curecanti National Recreation Area. Although they are two separate units, there is one superintendent and management staff responsible for all operations in both parks.

Curecanti NRA is comprised of lands surrounding the Crystal, Morrow Point and Blue Mesa reservoirs along the Gunnison River. Curecanti shares a common boundary with Black Canyon of the Gunnison NP located at the East Portal along the Gunnison River. Both parks were set aside to protect valuable natural resources and provide for visitor experience. There is an administrative site on the south rim of the Black Canyon that provides office/space that also houses park staff and a visitor center. Park headquarters for the two units is at Elk Creek, located approximately 15 miles west of Gunnison on Blue Mesa reservoir.

The NPS FMO and a FOS are stationed at Dinosaur National Monument located in northwestern Colorado. The BLM provides a Duty Officer for both park units. The BLM DO coordinates with the NPS FMO for fire response. NPS severity resources will be under the supervision of the BLM Duty Officer.

Black Canyon of the Gunnison National Park contains a designated wilderness area. Fire actions commensurate to protection of wilderness values are required. The rest of the park is managed similar to the wilderness. The Gunnison sage grouse is a species of concern in both parks. Fire operations constraints are: no retardant, mechanized equipment or driving off-road without Superintendent's approval. MIST (Minimal Impact Suppression) tactics also should be used. The two park units allow for a variety of management responses. Check with the Duty Officer for the appropriate response to any fire start. Order a READ for any fire that goes above the T5 or where you may have concerns with natural or cultural resources.

Fuel classes are similar to the surrounding areas of the Gunnison Basin and upper elevations surrounding Montrose: sage/grass mixes, Gambel oak/mixed mountain shrub-lands, pinyon Juniper woodlands and scattered conifers.

Each fire will be documented in WFDSS (automatically via IRWIN), but unless the fire is a multi-day incident or Type 3, the IC may not get the WFDSS document. The DO will relay the fire management strategy. Each T3 fire will have a separate delegation of authority as well. A Risk and Complexity Analysis will be done for every fire. The IA card and any documentation will need to be turned into Montrose Interagency Dispatch.

Park Law Enforcement (LE) staff has responsibility for any Search and Rescue (SAR) incident. They are a good resource for working with the public as well. There is LE staff at each of the administrative sites as well as on the North Rim. Some park staff is red carded, but not all. The LE staff will be in charge of all evacuations. You will have to call the LE staff on NPS frequencies to ensure you can establish contact.

Name	RX	TX	Tone	Location
Local	166.300	166.300		(simplex)
Sapinero	166.300	166.900	91.5	Blue Mesa
Sheeps Knob	166.300	166.900	110.9	Lower Lakes
Black Canyon	166.350	163.950	97.4	Black Canyon



## Oil & Gas Field Safety

The Montrose Dispatch area has many localities where oil and gas production activities exist. The way we engage fires in oil & gas fields pose different safety concerns and hazards that will dictate different tactics and mitigation measures. Oil and gas facilities have hazards that pose threats to wildland firefighters.

- The safety of crews is the first priority. Only engage the fire when it has been determined it is safe to do so. If conditions warrant, disengage from the fire.
- When arriving on scene, notify Montrose Dispatch Center of the owner of the facility and its location. If you are not the first on scene: Locate the requesting Incident Commander (IC). Check in and obtain briefing.
- Identify the oil and gas facilities involved with the incident and determine what safety concerns are associated with them. These hazards may be different than common wildland fire hazards.
- Identify whether the oil and gas operators in that area have been contacted. Utilize dispatch to make contacts if necessary. Hazards may involve HAZMAT.
- Ensure traffic control is addressed. Use Agency and local law enforcement when necessary.
- Develop evacuation procedures for industry personnel who may potentially be threatened.
- Develop a sound tactical plan of action. Don't get drawn into unorganized suppression efforts.
- The large, open spaces created by well pads and rights-of-way make convenient and tempting areas for firefighting operations, staging areas, and safety zones yet the presence of hazardous materials, high pressure pipelines and industrial equipment can create a dangerous environment for untrained personnel.
- When well sites are well maintained and fully functional, they are relatively safe places and can withstand the high temperatures associated with wildland fires. Not all well sites are well maintained however, and noxious and flammable gases can be present around the well site. If these gases are ignited, a potential flare-up or explosion could occur.
- Open pits/dumps should be avoided as they could contain discharging gas. When driving on a well pad, avoid backing up around production equipment. Park in such a way that allows you full vision of surrounding hazards and avoids the need for backing.
- Toxic and harmful gases, such as Hydrogen Sulfide (H<sub>2</sub>S), may be present in harmful concentrations around well sites and well equipment. These gases may or may not smell and are heavier than air and sink to low areas. Avoid low areas during calm, windless periods.
- If dozer operations are likely, ask Montrose Dispatch Center to notify the appropriate utility representative. Do not assume that pipelines are buried deeply or are directly under their markers. Dozer operators and bosses need to be extremely cautious.
- Engines should avoid rights-of-way due to exposed pipelines and dog-legs (pipe rising above ground from pipelines).
- Federal firefighters will not engage in suppressing oil and gas facilities that have caught fire. They are untrained to do so. This will be handled by an appropriately qualified resource (e.g. structural firefighters).

- Help the local cooperators recognize hazards such as: Untrained and unequipped oil and gas personnel suppressing fire; heavy equipment working around pipelines, personnel, and emergency vehicles.
- Be honest, if you see serious safety concerns, insist on mitigation actions, or reposition your crew to a safe location.

### Hydrogen Sulfide-H<sub>2</sub>S

Ensure that at least one member of each squad or engine crew is knowledgeable in the use and data interpretation of the Hydrogen Sulfide gas monitor. Training on the device will include at a minimum:

Equipment charging and maintenance of sensors

- Startup, zeroing, calibration and bump testing procedures as recommended by the manufacturer.
- How the monitor elicits a warning alarm (visual, auditory, vibration)
- Understand Peak Reading, Short Term Exposure Limits (STEL), and Time Weighted Averages.
- Understand how to set the monitors alarm threshold.
- The monitor's alarm shall be set at the current American Conference on Governmental Industrial Hygienists (ACGIH) Threshold Limit Value (10 PPM 2008) and STEL (15PPM 2008)

**If hydrogen sulfide gas (H<sub>2</sub>S) is encountered, immediately disengage and leave area.**

Firefighters need to immediately report H<sub>2</sub>S or potential exposure and seek immediate medical care.

#### **Hazardous Water Sources**

Many are used during fire suppression activities. They may appear harmless but could contain hazardous material and pose a threat to your health and firefighting equipment. Some of these threats include:

- Hydraulic Fluid
- Fracturing Fluid
- Cyanide
- Sewage
- Corrosives

**Indicators that a water source maybe hazardous include:**

- Proximity to active or inactive mining operations
- Gas/oil wells
- Water treatment facilities
- Other industrial operations

In many cases, these hazardous water sources may not be fenced and no warning signs may be present.

Suppression personnel should evaluate water sources to ensure they do not contain hazardous materials. **If you are unsure of the contents of a water source, you should not utilize the water source until its contents can be verified.**

Resource Advisors, or on-scene personnel can assist with verification of safe water sources. Be sure to ask your FMO about known hazardous water sources in your operational briefing.  
-Reference your IRPG or the ISFFAO (Red Book) for further direction.

## **WEATHER. FUELS. FIRE BEHAVIOR & TACTICS** **IN THE MONTROSE INTERAGENCY DISPATCH AREA (MIDA)**

### **OVERVIEW**

Fuels and topography vary greatly over the 5.5 million acres of fire protection. The west zone (Norwood) of the unit is characterized as an arid plateau with gently rolling terrain with lots of deep canyon areas. In the central Zone (Ouray) the area is Mesas and Plateaus of varying fuels from oak brush to spruce fir. As you move to the east zone (Gunnison), the landform rises dramatically through several climate zones up to and including alpine and tundra. Major fuel types include sage, pinyon-jumper, Gamble Oak, Ponderosa pine, Lodge Pole, spruce and Alpine Fir.

### **WEATHER**

Annual precipitation varies from 8 inches at the lower elevations to more than 30 inches at the higher elevations. From 25 to 40% of the annual precipitation falls as snow during the colder months, depending on elevation. Most of the precipitation outside of the mid to late summer season occurs from frontal type storm systems, which are typically regional in size. Precipitation from frontal events occurs over a relatively long duration but at low intensity rates. In contrast, summer precipitation is commonly associated with the southwest monsoon air flow pattern, which can produce localized, short duration, and intense precipitation events.

The majority of the moisture for the unit comes in the winter and during the monsoon season. Winters, in the MIDA, range from limited moisture at the lower elevations to moderate moisture at the upper elevations. The fire season generally starts mid-May and peaks in late June or early July. Fire season generally moderates with the onset of the monsoon rains, which normally start in early to mid-July.

In general, the weather events for the MIDA originate from the south-southwest and move to the northeast-east. The prevailing winds are also south-southwest, which results in fires burning up slope, up valley in the western portion of the MIDA. The eastern portion of the MIDA (eastside of the Black Canyon) will have the same weather and wind patterns as the west side but topographic orientation will cause the fires to burn down slope, down valley.

## **FUELS**

### **Pinyon-Juniper**

Describes lands located between 4,700-5000 feet where Pinyon and Juniper are the predominate fuel types associated with the fire management workload. Small groups of Ponderosa Pine may exist in more ideal sites, and pockets of Douglas-Fir.

This fuel type can occur on the North-facing slopes of deeper desert canyons. The lower range borders the desert plant community, and a transition to Gamble Oak occurs as elevation increases. This Fuel Type covers approximately 1,612,652 acres, representing 29% of the vegetation within the MIDA unit.

- Fire Behavior: Lightning fires are numerous due to the arid conditions which typically occur in this Fuel type. Most fires are small single tree events, and may involve clusters of adjacent trees. Strong winds combined with low humidity and high temperatures can cause crown fire runs, with extreme fire behavior and medium-range spotting. Resistance to control is high under these conditions, but fires are

typically short duration and often only make a single run. Larger fires can reach several thousand acres in size, but the fuel type historically comprises a mosaic of medium-sized fires ranging from 25-500 acres.

### **Oak-brush**

Describes lands located between 7,500-9,000 feet where Gamble Oak is the predominant fuel type associated with the fire management workload. This Fuel Type covers approximately 358,726 acres, representing 6% of the vegetation within the MIDA.

- Fire Behavior: Lightning starts are less numerous in this Fuel type, as fuel conditions can be more variable in Gamble Oak. Seasonal frost-kill can occur over large areas, which dramatically increases the fire danger. A typical low-moderate intensity fire may be 5-10 acres. Control can be more difficult, as burns tend to be messy and require intensive mop-up. In drought conditions, extreme fire behavior and rapid rates of spread can be expected. Larger fires can reach several hundred acres, and historic burns of this size are evident across the fuel type.

### **Ponderosa Pine**

Describes lands located between 5000-9,000 feet where Ponderosa Pine is the predominant fuel type associated with the fire management workload. Gamble Oak is present in the under story, along with pockets of Aspen. A transition to note, continuous stands of Aspen occurs as the elevation rises. This fuel type covers approximately 1,006,106 acres, representing 18% of the vegetation within the MIDA.

- Fire Behavior: Lightning fire starts are frequent in this fuel type, and typically involve taller Ponderosa Pine trees and snags most fires are less than 2 acres, and usually exhibit low-moderate rates of spread in ground cover and needle-cast surrounding the strike tree. Crown fires can occur, but less frequently than Pinyon-Juniper. Extreme fire behavior can create long-range spotting, significant fire runs, and difficult control problems. Large fires can be several thousand acres in size, and the largest fire events recorded on the MIDA occur in this fuel type.

### **Spruce-Fir**

Describes lands located between 9,000-12,000 feet where Spruce and Fir are the predominate fuel types associated with the fire management workload. Aspen is intermixed in some areas, and the fuel types also include large stands of Lodge pole Pine, with some Bristlecone Pine occurring at higher elevation. This fuel type covers approximately 2,660,766 acres, representing 47% of the vegetation within the MIDA unit.

- Fire Behavior: Lightning fire starts are less frequent in this fuel type due to higher elevation weather conditions. Most fires are usually less than ½ acre, but control can be laborious, involving mop-up conditions in deep duff and numerous squirrel caches. In dry weather, torching is common and can create serious short-medium range spotting problems. Ideal conditions can produce extreme fire behavior and long range spotting. Though not common, larger fires may average 50-100 acres, and tend to be longer duration events in this fuel type. Historic fire scars are evident, with some reaching 1,000 acres or more in size.

EXPECT ACTIVE FIRE BEHAVIOR WHEN THESE CRITICAL THRESHHOLDS ARE REACHED

**LIVE FUEL MOISTURES**

Pinyon:	75-92%
Juniper:	70-55%
Sage:	120%
Oak:	145%
Ponderosa Pine:	100%
Lodge Pole:	100%
Spruce:	100%

**DEAD FUEL**

LOW ELEVATIONS		HIGH ELEVATIONS
1000 HOUR	9%	13%
100 HOUR	6%	8%
10 HOUR	5%	7%
1 HOUR	4%	5%

**ACTIVE FIRE**

Pinyon Juniper 17% RH and + 12 MPH winds

Conifer 20% RH and +20 MPH winds

Sage Very Dependent on Fuel moisture 60-100% = 30% RH

100-120% =25% RH

120-140% =<18% RH

140%+ = <14% RH

## Montrose Interagency Dispatch

2465 S. Townsend Ave

Montrose, CO 81401

24 Hour Phone: 970-249-1010

Email: [comtc@firenet.gov](mailto:comtc@firenet.gov)

Webpage: [gacc.nifc.gov/rmcc/dispatch\\_centers/r2mtc/](http://gacc.nifc.gov/rmcc/dispatch_centers/r2mtc/)

### DISPATCH OPERATIONS

Montrose Interagency Dispatch Center is staffed 7 days a week during fire season (generally May through September). Normal operating hours during 7-day coverage are 0800-1730. Off season operating hours are Monday through 0800-1630. Extended operating hours will be implemented during periods of high activity. Duty officers should advise dispatch of extended hours that resources may be working so dispatch can support those resources.

All resource requests (Overhead, Crews, Equipment, Supplies, and Aircraft) are placed directly with MTC unless orders are associated with a large incident and/or an Expanded Dispatch has been established.

### WILDWEB

Wildweb is a website that reflects information processed by the local dispatch center. Montrose creates incidents for the following types of action: False Alarms, Wildland Fires, Resource Orders, Prescribed Fire, and Projects.

Wildweb displays this important data:

Incident Number- CO-XXX-000001 (different than the IQCS number)

**Cost Code** – for example P2XXXX (0204)

**Contain, Control, and Out** times for wildfires

**IQCS** number

Resource status for equipment and overhead can be found in wildweb as well.

Website: <http://www.wildcad.net/WCCO-MTC.htm>

Below is a summary of local operating procedures. Please familiarize yourself with the ordering procedures in the MTC mobilization Guide as well, which can be found on the Montrose Interagency Dispatch website- it has its own link on the left hand side.

## PROJECT WORK

One-time missions do not require a written document (ie cutting the tree that fell across the picnic table, the road, etc) just call in with a lat/long once on scene. Please use a Project Med Plan if you are leading a project or are asked to work a project for another area of the field office or ranger district that is anticipated to be multiple days (2 or more). This form is used to help direct medical assistance to the project location should a firefighter be injured while working on a project. Please confirm your lat/long and driving directions are complete and comprehensive so that resources can arrive to assist with the medical situation in a timely manner. The form can be found under the Dispatch link on the Montrose Interagency Dispatch website and is titled Project Med Plan. The Medical Plan (page 1) is for your use in the case of an emergency and would not be filled out until needed. The Medical Emergency Evacuation Plan (page 2) is the part that you need to fill out. Once the form is complete please email it to [comtc@firenet.gov](mailto:comtc@firenet.gov) and follow up with a phone call or a face to face visit to confirm it was received. This form needs to be filled out and submitted 24 hrs. prior to project implementation.

## Communications

If you are in your engine or chase be sure to identify over the radio as the engine number, chase truck, or module designator. If you are not in an engine, chase, module and you are not in an overhead position with a call sign please identify yourself using your last name. If needed you may identify as "last name" from Engine XXXX.

Initial Attack resources should maintain communications with the dispatch center at all times. Check in with dispatch via the radio when leaving the station, changing locations, arrival to destination, departure from current location, and upon arrival back in station. Give ETA/ETE's, and be prepared to provide a legal or lat/long if requested by dispatch. Also make sure to contact each dispatch center when crossing over into a different dispatch area i.e. from Montrose Dispatch to Grand Junction Dispatch or Durango Dispatch and vice Versa.

## Incident Procedures

### FIRE RESPONSE

During regularly staffed dispatch hours resources will be dispatched using the "closest forces policy" which states that the nearest (in terms of response time) resources will be dispatched regardless of agency affiliation. For afterhours smoke reports, dispatch will contact the jurisdictional DO listed on the daily staffing page, and the DO will decide the appropriate response for dispatch to implement.

If units in the field observe or receive a smoke report, relay this to Montrose dispatch and await further direction. A response decision will be based on closest forces, Run Cards, etc.

All incidents are assigned an Incident Action (IA) Number. This IA number will be provided to the resources responding and will be used in communications referencing the fire until a name can be established. Be sure to include this number on all pertinent documentation related to the incident.

No action is to be taken on the fire unless you have positive communications with dispatch. If there is a need for a human repeater, assign a resource already on the fire or order one. Before any suppression action is taken, dispatch will plot the fire and it will be reviewed by the Agency Duty Officer. If there is potential for the fire to be managed with strategies other than aggressive suppression it will be relayed to resources as soon as possible.

Once on scene, ensure that the Incident Commander is designated and clear to all resources. Inform dispatch of the IC and IC trainee if applicable. When changes in command are made, they will be announced over the radio and confirmation from Dispatch and on scene resources is required. As IC, you will name the fire using a geographic reference in the fire vicinity. This name will be relayed to dispatch to determine if it has not previously been used. At that point in time all communications will be done by identifying yourself as "Fire Name" IC, e.g., Pinyon Ridge IC. Provide a size-up of the fire to dispatch utilizing the Initial Response Size-up Card (available from the Agency FMO or dispatch). Use the size-up card to document any hazards and how they were mitigated. When reporting a fire or upon arrival at the scene of a fire, it is imperative to provide dispatch with an accurate legal or latitude/ longitude preferably in degrees decimal minutes (DD MM.mmm by DDD MM.mmm) at the point of origin to determine jurisdiction. Datum is WGS 84. If it is suspected to be Human caused, protect the point of origin. Human caused fires on BLM land require an investigation. Dispatch will try to find a fire investigator to respond and notify the DO. **Completed size-up cards are to be returned to Dispatch or the Agency DO within 2 days of the fire being called out.**

#### **FALSE ALARMS**

If an incident that was suspected to be on or threatening BLM land is called a False Alarm or UTL, a unique fire charge code will be issued, and a fire report will be completed by the BLM DO.

If an incident that was suspected to be on or threatening Forest Service land is called a False Alarm or UTL, P2EQUO will be the charge code assigned, and no fire report is required.

#### **CAMPFIRES**

BLM/USFS-Regardless if the camp area is a dispersed or established site the fire must be outside of the ring before a full size up, incident organizer, and fire report will be required.

NPS- In designated campgrounds if the fire is outside of the ring please provide a full sizeup, incident organizer, and a fire report will be completed. In dispersed camping sites regardless if the fire in in the ring or not please provide a sizeup, incident organizer and a fire report will be completed.

#### **OVERNIGHT**

During periods of high fire activity the dispatch center may be staffed 24 hours. Field resources should notify dispatch by 1630, or while performing the on scene size up if extended or overnight staffing is going to be needed. If resources are camping for the night and do not require dispatch to be staffed overnight, they can call the regular dispatch number (970-249-1010) to contact the dispatcher on-call for assistance, or 911 for emergency assistance.

As resources return to station via paved roads, if they are comfortable, they may notify dispatch that they are "on good roads and will contact the DO upon return to station" allowing dispatch to go out of service for the evening.



## **Weather**

Weather will be read each day at 1000 and 1600. When Dispatch has finished reading the weather, active/staffed incidents should acknowledge that they have copied. Red Flag Warnings will be broadcasted over the radio and texted out as soon as they are received. Active/staffed incidents will be expected to acknowledge they copied the Red Flag.

## **Ordering Aircraft**

All tactical aircraft orders (air tankers, helicopters, smokejumpers, etc.) will be requested through Montrose Dispatch. Requests will be filled on a first come first served basis unless multiple incidents require the establishment of priorities. Please state the number of structures threatened, their location in relation to the spread of the fire, and if possible if they are primary residences or other justification for ordering the aircraft. In such cases, the Dispatch Center Manager (or Acting) will consult with the appropriate agency representative or LMAC if multiple agencies are involved. This will determine resource allocation and assist decision makers in setting priorities. Priorities will be established according to policies and procedures set forth in the National and regional Mob Guides until an LMAC meeting or conference call can occur.

Aircraft assigned to your incident will flight follow with dispatch until positive communication is made with the incident. At that time the aircraft will flight follow locally with the incident. It is the IC's responsibility to notify dispatch when aircraft arrive on scene and are in contact with ground resources. It is also the IC's responsibility to notify dispatch when aircraft are departing the incident. This is extremely important when helicopters are leaving your incident and going to a dip site without a dip site manager. This will enable a smooth transition for handing off the flight following responsibilities.

If several aircraft are assigned to your incident and it is expected to be a multi-day event, a TFR (Temporary Flight Restriction) should be ordered. If an order for a TFR is not received, dispatch will take the initiative and request a TFR if deemed necessary. The IC will be notified if this occurs.

Immediately notify dispatch of any intrusions to airspace over your incident regardless of a TFR in place or not. If possible provide the aircraft type, color, and tail number, and direction of travel.

## **Ordering Equipment and Crews**

Remember to relay the type, quantity, reporting location, and needed date/time.

Order resources by type. For example, order a Type 4 engine, do not order E-414. Be specific in what you want (numbers, types, sizes, etc.) Be specific and realistic on the date and time resources/supplies are needed. Consolidate your orders the best you can to eliminate numerous trips to your fire. Give good directions to the reporting site. For requests that are unusual or unique provide justification.

For meals, plan on being self-sufficient for 24hrs. When ordering meals, order at least a meal ahead (i.e.: in the morning order for diner, although an entire day ahead is helpful if possible) REMEMBER to plan for incoming/demobing resources.

## Ordering Supplies

Supply orders can be placed by the IC or Operations or another designated ordering manager (ICs please identify this individual and notify dispatch as soon as possible) with dispatch via phone or radio and will be transcribed onto a Non-NFES Supply request form for processing during an extended attack fire if needed. If resources on the fireline do not have a non-NFES supply request form a general message can be completed, signed by the IC, and delivered to dispatch via supply/meal drivers or other personnel who travel between the incident and dispatch.

Be sure to identify all five of the following items: 1) Incident name 2) person/equipment requesting items 3) needed date/time 4) detailed description of items including quantity 5) delivery location. A copy of a "Lost and Damaged" report must be filled out and given to dispatch for all non-disposable/non-consumable items.

Incident replacement (orders to be filled by the Rocky Mountain Area Cache) should be requested via an OF-315 whenever possible. If not, the general message must contain:

- Needed date/time
- Shipping contact name
- Phone number
- Shipping address
- City ,State, Zip code
- Quantity of each item
- Detailed description of the item

1- All S numbers must be approved by the IC or FMO/Duty Officer while the fire is staffed. This is the preferred method as it is the cleanest.

2- Once an incident is no longer staffed and/or called out, all S number requests will be approved by the jurisdictional FMO or DO should be requested within 5 days.

- If upon return to station/during refurb supply needs are identified download a non-NFES supply request found on the dispatch website under the supply link.
- Complete the form and email it to the DO for the jurisdiction of the fire. (GMF= the FS East or West Zone DO. UPD= BLM zone DO. Not the Forest or Unit DO.) Be sure the email states the business where items will likely be purchased and whose purchase card will be used.
- If the DO approves they will forward the email with the attachment stating it is authorized to comtc@firenet.gov.

- If the business or purchaser changes, please notify dispatch so the resource order can be edited to reflect those changes. An S# resource order will not be provided to purchaser until fill information is provided to dispatch. All S numbers must be used within one month of being issued, if the fill information is not received within this time the S# will be cancelled.

### **Demobilization**

Work closely with dispatch if a national resource (all aircraft, IHCs, and some fire modules) is assigned to your fire and will be demobed w/in the next 1-2 shifts. MTC must notify the geographic area coordination center (RMCC) 24 hours prior to that resource being released. Notify dispatch of all other demob plans ASAP to help facilitate resource reassignments, logistical assistance, and proper close out with vendors, contracted resources, etc.

Notify dispatch when resources are leaving the incident and provide an ETA to their destination. This information is imperative when dealing with contract resources for payment purposes and needs to be broadcast over the radio if possible so the information can be documented in the incident log.

The IC is responsible for closing out with resources (signing shift tickets, timesheets, and completing inspections). If you need help doing this place an order for an EQTR (Equipment Time Recorder) or PTRC (Personnel Time Recorder).

Initial Response Size-up Cards are to be completed by the IC. Blank cards can be obtained from the MTC website or in person at dispatch. Completed cards are to be returned to Dispatch or the Agency DO within 2 days of the fire being called out.

### **OFF UNIT ASSIGNMENTS**

Call dispatch if you are going to get a name request- preferably have an incident name or at least a dispatch center or unit identifier that we can expect to see the order come from. You will not be set to available national as you would then need to accept any order that comes to MTC for the qualifications you hold and that may not be the order you were planning to fill. You will be set as available local and MTC staff will call as soon as we receive your resource order. Please have the dates/times and method of travel ready to relay. Please see MTC NERV SOPs for information about the National Emergency Rental Vehicle program. If you do not require off-road capability you can still have dispatch reserve your rental vehicle or you may make the reservation yourself- assuming your resource order is for emergency fire travel. If it is for a special project or a prescribed fire you may have to follow different guidelines. Your local dispatcher can help you determine the proper procedure once your resource order has arrived.

After an off unit assignment, call dispatch as soon as you arrive back to your duty station or your home. If it is after business hours please let the answering service know that you need to leave a message that should be emailed in the morning stating that you are back from assignment (spell your name as they are not familiar with all of the personnel on our unit and they help a variety of local businesses). This allows the dispatch center to maintain written and electronic records, and avoid calling you on your R&R days.

Please see the duty officer section for information about ordering resources into the MTC dispatch area.

## **DUTY OFFICER**

### **DAILY STAFFING**

Until the Roll Call program is available MTC asks Duty Officers to please update the Daily Resource Status Summary on the Intelligence tab on MTC's website by 1000 everyday April 1st-October 31st.

1. Once you click Update Reports a login screen will pop up with a box for you to type in the password. !Montrose1!
2. Once you are logged in select update record for your zone.
3. Ensure your planning level and Duty officer are correct. (A phone number following DO name is helpful and is required to be listed in Remarks in the row for that person.)
4. Ensure the leader name is correct for each resource in the zone.
5. Ensure the status is correct for each resource

A= Available. Resource is not staffed for the day and equipment is at the duty location available if personnel were to be called into station. For individuals this status will be understood as the person may not be in the office and can be contacted to check for availability to respond to a wildfire.

AZ=Available on Zone. Resource is staffed with personnel at the duty location for the day.

AO=Available Off Zone. Resource is available for local IA but is stasured in IROC as available national.

C= Committed. Resource is currently on a fire assignment or other duties that would not allow for an . Please note in the remarks block the incident name.

U=Unavailable. For a module (engine or suppression) this status will be understood as the personnel are off and not available to be called into station or the equipment is in the shop. For individuals this status will be understood as the person is on a day off and not available to be called into station.

6. Ensure the Location column reflects the duty location (or town that visiting resources are lodging in) or the fire name that the resource is assigned to.
7. Use the remarks block for labelling ICT3, 4, and 5 personnel as well as Regular Days Off (RDO) and contact phone numbers.

## ORDERING RESOURCES INTO THE UNIT

From the Montrose Interagency Dispatch Center website navigate to the appropriate link (Crews/Engines, Aircraft, or Overhead/Teams). Fill out the appropriate request form. Each type of resource has specific information required so that dispatch can successfully order the resource items duty officers need. Incident name and number are important so that dispatch orders the item on the correct charge code. Transportation needed means that the resource the DO is ordering will need to be set up by Montrose Dispatch with a vehicle if the yes box is check marked. For crew swaps for an engine that is already here in MTC area from out of area can be requested via the Overhead Incident Request form. Be sure to list all the personnel names and qualifications in the remarks section. Correctly spelled names make for a more expedient resource order process. For name requests, a strong justification and hard dollar account is needed. Also ensure requested resource is available as the type/qualification requested.

\*\*\*DO/off unit resources must notify Dispatch upon release from a prepo/support/severity/incident, and provide return travel information, prior to departing the unit.\*\*\*

## INFORM FIRE REPORTING

Once dispatch has entered all required data into Wildcad and the IC has called the fire contained, controlled, and out the duty officer will receive an email from comtc@firenet.gov with the incident log. The last page of the incident log should have any of the fire report information that you as a DO would need to confirm or verify against the INform program.

Wildcad does not populate INFORM with these four items:

Fire cause general

Fuel group

Fuel Model

Initial response time- Initial response time is defined by INFORM User guide as “The date/time of the initial response to the incident. More specifically when the Incident Commander (IC) arrives and performs the initial size up.” To get the initial response time to input into INFORM look in the Wildcad PDF for a timestamp entry that says “sizeup”.

## OVERDUE AND MISSING RESOURCE RESPONSE PROCEDURES

If an employee or module fails to return to their duty station by their established time or misses a scheduled check-in and there has been no recorded communication, Montrose Dispatch will use their best judgment in initiating the following procedures:

1. Try to contact the overdue resource by radio or phone for 15 minutes.
2. Inform the employee/modules supervisor who will complete the following tasks:
  - a. Continue attempts to locate individual/s via phone, radio, etc.
  - b. Attempt to contact their crew leader or other crew members/co-workers who may know their location.
  - c. Check for both agency and personal vehicles in the parking lot.
  - d. Call or stop by their local living quarters or lodging.
  - f. Travel to their last known location or request assistance from a closer resource.
  - g. Determine further need for dispatch involvement.
3. In the event that missing personnel cannot be located after these attempts, the following notification process will go into effect.
  - a. Notify the appropriate Duty Officer, line officer/Agency Administrator, and federal Law Enforcement Officer.
  - b. Line officer will approve notification of the Sheriff's office to activate search and rescue efforts. Relay to Montrose Interagency Dispatch the individuals age, height, weight, and other physical descriptors as well as vehicle information including color, make, model, year, and plate number so that MTC can facilitate the initiation of the search and rescue with the county.

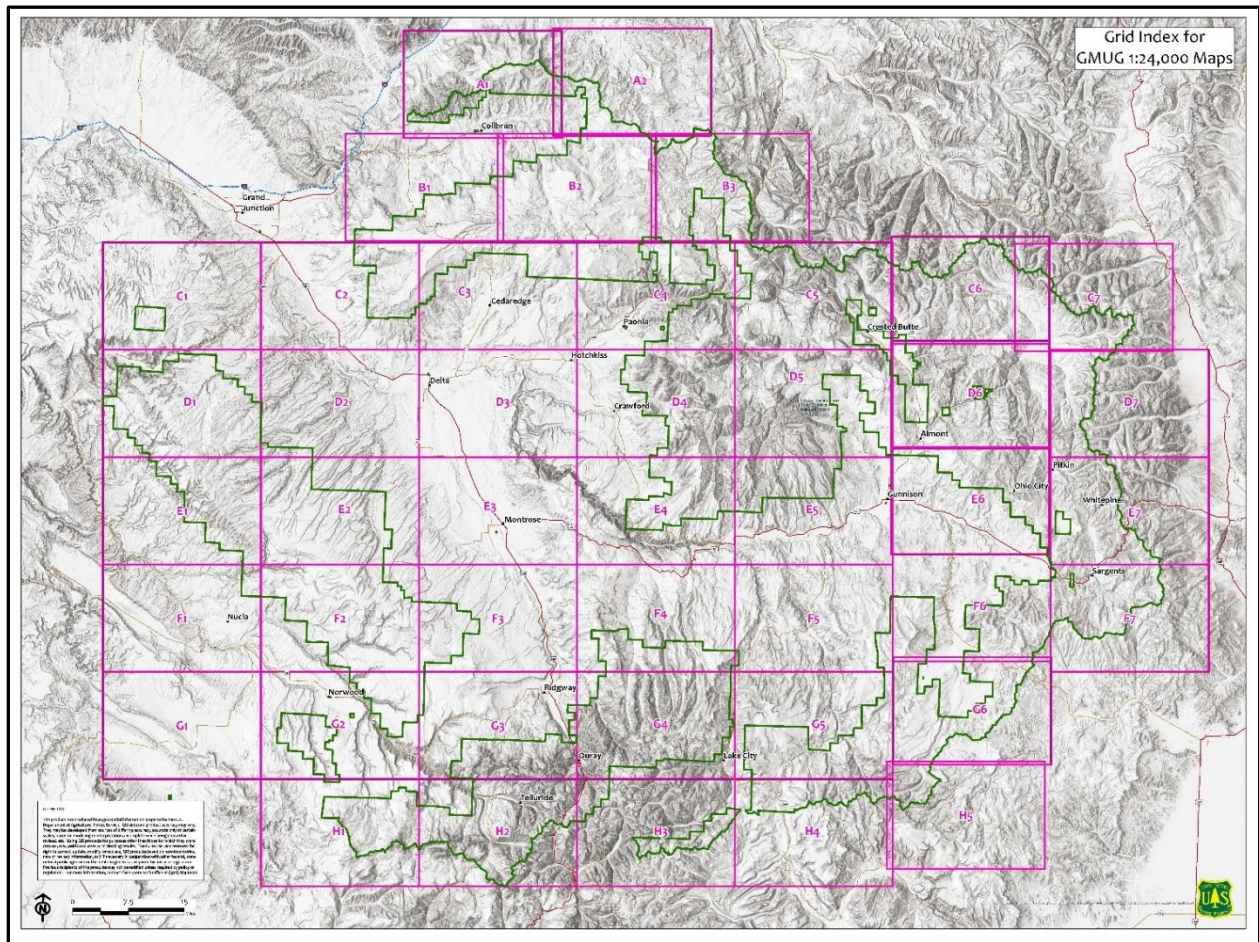
**\*\*\* Duty officers should advise dispatch of extended hours that resources may be working so dispatch can support those resources, and acquire proper staffing in a timely manner\*\*\***

Appendices/Reference Material

**Montrose Interagency Dispatch Maps- created by BLM-  
made for use on BLM lands**



# Montrose Interagency Dispatch Maps- created by USFS- use within and on USFS lands



- 44 detailed maps that can be downloaded within Montrose Interagency Dispatch and within Grand Mesa, Uncompahgre, and Gunnison National Forests boundary extent
- Scan this QR code for download access to all 45 MTC/GMUG Fireman's maps. Updated 4/2021





# Montrose Dispatch Area Geo-Referenced Maps (continued)

Name	Last modified	Size	Description
Parent Directory	-	-	-
<a href="#">0202_Bighorn National Forest.pdf</a>	2021-03-28 16:36	6.7M	
<a href="#">0202_Bighorn National Forest_NewBaseMap.pdf</a>	2021-03-28 16:37	5.0M	
<a href="#">0203_Black Hills National Forest.pdf</a>	2021-03-28 16:37	8.1M	
<a href="#">0203_Black Hills National Forest_NewBaseMap.pdf</a>	2021-03-28 16:38	6.7M	
<a href="#">0204_Grand Mesa_Uncompahgre and Gunnison National Forests - East.pdf</a>	2021-03-28 16:39	26M	
<a href="#">0204_Grand Mesa_Uncompahgre and Gunnison National Forests - East_NewBaseMap.pdf</a>	2021-03-28 16:40	26M	
<a href="#">0204_Grand Mesa_Uncompahgre and Gunnison National Forests - West.pdf</a>	2021-03-28 16:41	22M	
<a href="#">0204_Grand Mesa_Uncompahgre and Gunnison National Forests - West_NewBaseMap.pdf</a>	2021-03-28 16:42	21M	
<a href="#">0206_Medicine Bow-Routt National Forest - North.pdf</a>	2021-03-28 16:43	8.1M	
<a href="#">0206_Medicine Bow-Routt National Forest - North_NewBaseMap.pdf</a>	2021-03-28 16:43	6.5M	
<a href="#">0206_Medicine Bow-Routt National Forest - South.pdf</a>	2021-03-28 16:44	16M	
<a href="#">0206_Medicine Bow-Routt National Forest - South_NewBaseMap.pdf</a>	2021-03-28 16:45	15M	
<a href="#">0207_Nebraska National Forest - Northeast.pdf</a>	2021-03-28 16:45	4.2M	
<a href="#">0207_Nebraska National Forest - Northeast_NewBaseMap.pdf</a>	2021-03-28 16:45	2.5M	
<a href="#">0207_Nebraska National Forest - Southeast.pdf</a>	2021-03-28 16:46	4.3M	
<a href="#">0207_Nebraska National Forest - Southeast_NewBaseMap.pdf</a>	2021-03-28 16:46	2.1M	
<a href="#">0207_Nebraska National Forest - West.pdf</a>	2021-03-28 16:46	6.5M	
<a href="#">0207_Nebraska National Forest - West_NewBaseMap.pdf</a>	2021-03-28 16:47	4.7M	
<a href="#">0209_Rio Grande National Forest.pdf</a>	2021-03-28 16:48	18M	

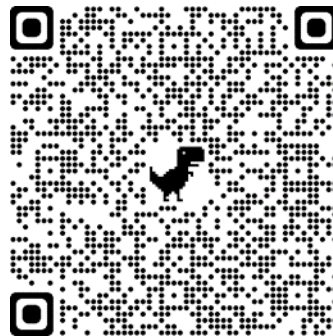
## Retardant Avoidance Maps for GMUG- two maps available for download



Radio Repeater Map

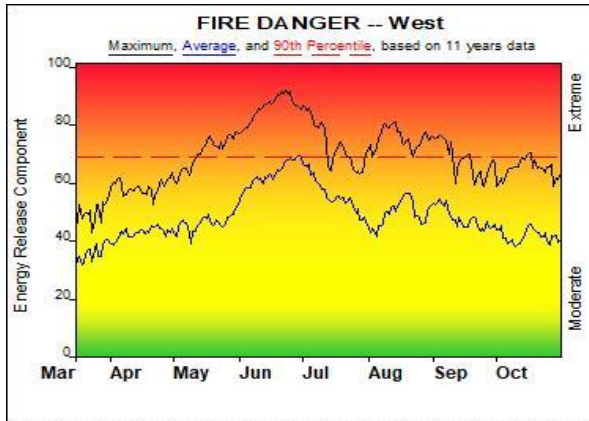


Aerial Hazard Map



Air Freq Map





#### Fire Danger Area:

- ◆ West
- ◆ FWZ 290
- ◆ 55710/53807
- \* Meets NWCG Wx Station Standards

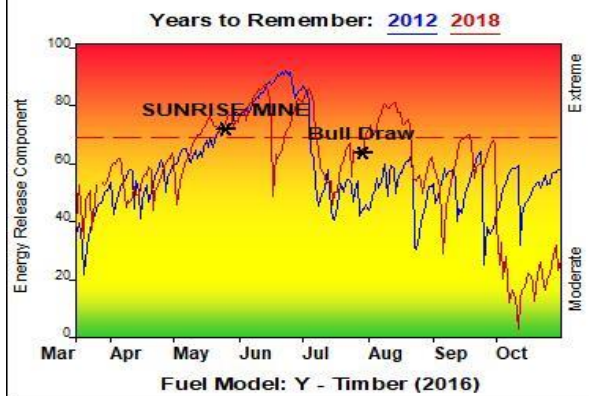


#### Fire Danger Interpretation:

- EXTREME** -- Use extreme caution
- High** -- Watch for change
- Moderate** -- Lower Potential, but always be aware

Maximum -- Highest Energy Release Component by day for 2009 - 2019  
 Average -- shows peak fire season over 11 years (2539 observations)  
 90th Percentile -- 10% of the 2539 days from 2009 - 2019 had an Energy Release Component above 68

**Local Thresholds - Watch out:** Combinations of any of these factors can greatly increase fire behavior:  
 20' Wind Speed over 15 mph, RH less than 15%,  
 Temperature over 90



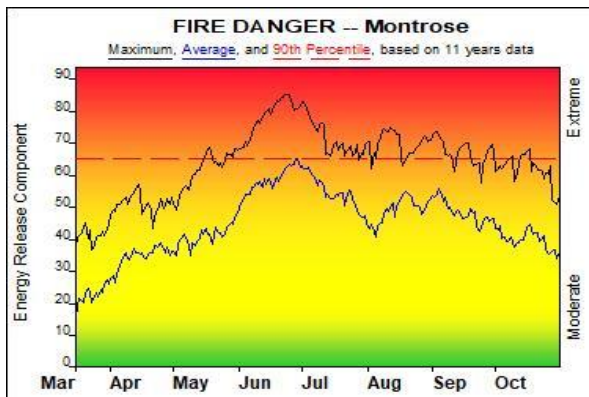
#### Remember what Fire Danger tells you:

- ✓ Energy Release Component gives seasonal trends calculated from 2 pm temperature, humidity, daily temperature & rh ranges, and precip duration.
- ✓ Wind is NOT part of ERC calculation.
- ✓ Watch local conditions and variations across the landscape -- Fuel, Weather, Topography.
- ✓ Listen to weather forecasts -- especially WIND.

#### Past Experience:

West Fire Danger Rating Area large fires generally occur when ERC is 87 or greater in combination with other local threshold values. Valley bottoms in this FDRA rise up to steep mesas and ridges, with fuels ranging from riparian, grasslands, shrublands, and Pinyon/Juniper woodland. Both tamarisk and cheat grass are abundant and can burn with high intensity and high rates of spread. In wet years, cheat grass dominates many of the low elevation areas. Gambel oak can burn intensely when live foliar moisture is less than 95%.

Responsible Agency: USFS/BLM  
 FF+5.0 build 20191211 05/04/2021-15:04 (C:\Users\jam esram ire... \MTC\_FDOP\_3\_13\_1515)  
 Design by NWCG Fire Danger Working Team



#### Fire Danger Area:

- ◆ Montrose
- ◆ FWZ 292
- ◆ 53805/52704
- \* Meets NWCG Wx Station Standards

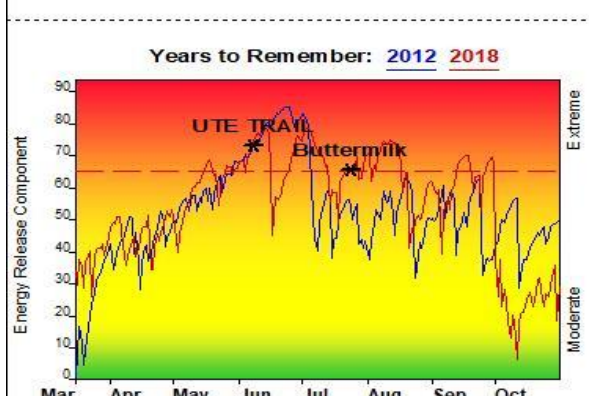


#### Fire Danger Interpretation:

- EXTREME** -- Use extreme caution
- High** -- Watch for change
- Moderate** -- Lower Potential, but always be aware

Maximum -- Highest Energy Release Component by day for 2009 - 2019  
 Average -- shows peak fire season over 11 years (2540 observations)  
 90th Percentile -- 10% of the 2540 days from 2009 - 2019 had an Energy Release Component above 65

**Local Thresholds - Watch out:** Combinations of any of these factors can greatly increase fire behavior:  
 20' Wind Speed over 15 mph, RH less than 15%,  
 Temperature over 90



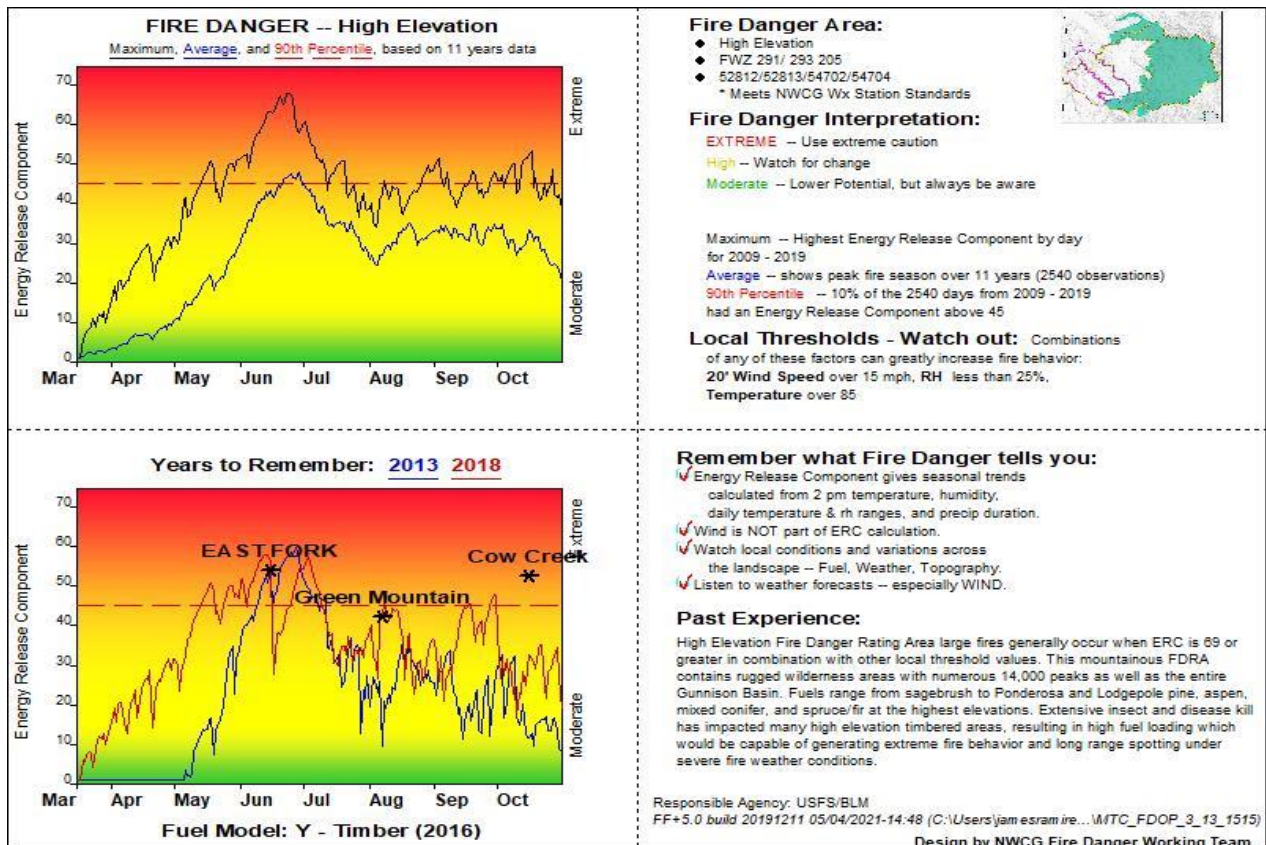
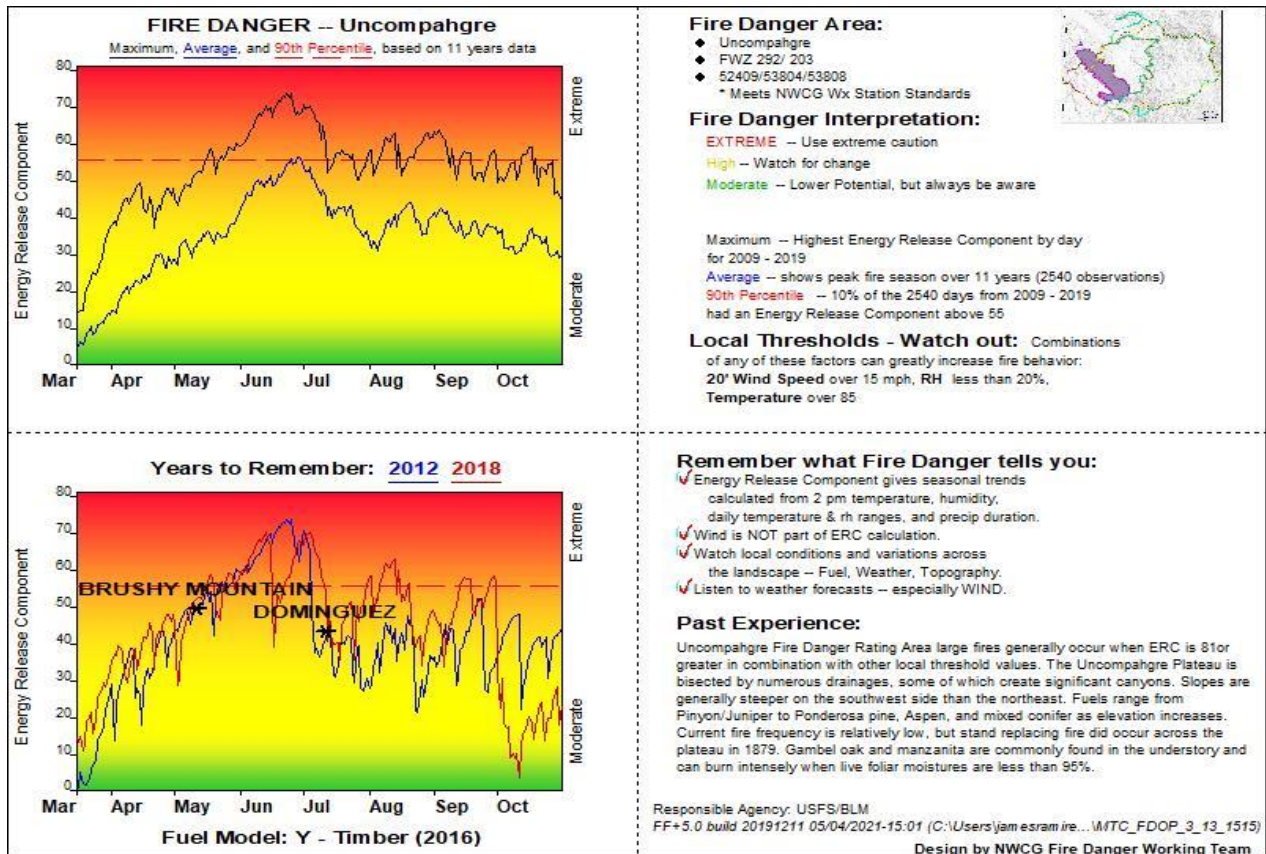
#### Remember what Fire Danger tells you:

- ✓ Energy Release Component gives seasonal trends calculated from 2 pm temperature, humidity, daily temperature & rh ranges, and precip duration.
- ✓ Wind is NOT part of ERC calculation.
- ✓ Watch local conditions and variations across the landscape -- Fuel, Weather, Topography.
- ✓ Listen to weather forecasts -- especially WIND.

#### Past Experience:

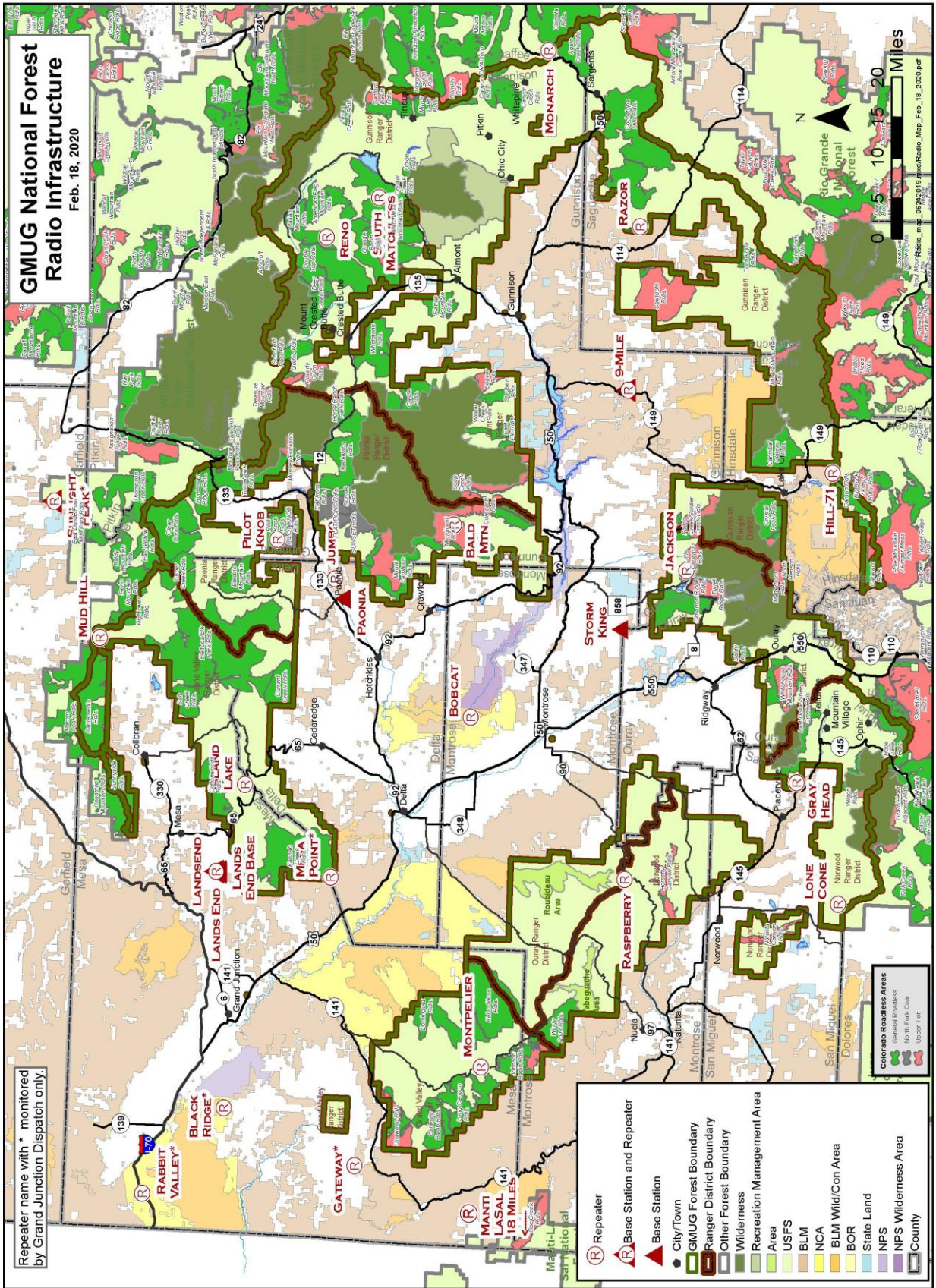
Montrose Fire Danger Rating Area large fires generally occur when ERC is 88 or greater in combination with other local threshold values. Terrain primarily consists of river valleys and surrounding gentle slopes and some deep canyons. Fuels ranging from grassland to Gambel oak and PJ can cause rapid fire spread if windspeeds are in excess of 10 mph. Gambel oak live foliar moistures of less than 95% can lead to extreme fire behavior. Drought and frost-kill can also lead to extreme fire behavior throughout the FDRA.

Responsible Agency: USFS/BLM  
 FF+5.0 build 20191211 05/04/2021-14:40 (C:\Users\jam esram ire... \MTC\_FDOP\_3\_13\_1515)  
 Design by NWCG Fire Danger Working Team



## ***Radio Frequencies for Montrose Interagency Dispatch Unit***

<b>Repeater Name</b>	<b>Radio Display Name</b>	<b>RX</b>	<b>Tone GRD</b>	<b>TX</b>	<b>Tone GRD</b>
BALD MT	BALD	170.4625		164.8250	136.5
BOBCAT	BOBCAT	170.0250		165.4500	146.2
GRAYHEAD	GRAYHEAD	170.0250		165.4500	123.0
GUNNISON PORTABLE	GUN PORT	170.4625		164.8250	127.3
HILL 71	HILL 71	172.3250		173.3250	146.2
ISLAND LAKE	ISLAND LAKE	170.4625		164.8250	107.2
JACKSON	JACKSON	172.3250		166.4250	141.3
JUMBO	JUMBO	170.0250		165.4500	71.9
LANDSEND BASE		170.4625		164.8250	100.0
LANDSEND REPEAT		170.4625		164.8250	103.5
LONE CONE	LONECONE	170.0250		165.4500	179.9
MATCHLESS		172.3250		166.4250	103.5
MANTI LA SAL	MANTI	170.0250		165.4500	167.9
MONARCH	MONARCH	172.3250		166.4250	156.7
MONTPELIER	MONTPELR	170.4625		164.8250	114.8
MONTROSE PORT	MONTPORT	170.0250		165.4500	127.3
MUD HILL	MUD HILL	170.4625		164.8250	110.9
9 MILE	9 MILE	172.3250		166.4250	167.9
PAONIA BASE	PAONIA	170.4625		164.8250	162.2
PILOT KNOB	PILOTKNB	170.4625		164.8250	131.8
RENO	RENO	172.3250		166.4250	151.4
RASPBERRY	RASPBRY	170.0250		165.4500	107.2
RAZOR DOME	RAZOR	172.3250		166.4250	192.8
STORMKING	STRMKNG	170.0250		170.0250	173.8
<b>Tac Name</b>	<b>Radio Display Name</b>	<b>RX</b>	<b>Tone GRD</b>	<b>TX</b>	<b>Tone GRD</b>
BLM WORK	LD WORK	168.3500		168.3500	
FS WORK	FD WORK	164.9875		164.9875	
VFIRE21	VFIRE21	154.2800		154.2800	156.7
FIRETAC 7	FIRETAC 7	169.2875		169.2875	
<b>A/G Name</b>	<b>Radio Display Name</b>	<b>RX</b>	<b>Tone GRD</b>	<b>TX</b>	<b>Tone GRD</b>
CO04 A/G1	A/G15	167.5250		167.5250	
CO04 A/G1	A/G 13	167.4250		167.4250	
CO04 A/G1	A/G07	166.8500		166.8500	
<b>ALL AIR AMBULANCE</b>	<b>VMED28</b>	<b>155.3400</b>		<b>155.3400</b>	<b>156.7</b>
NATIONAL FLIGHT FOLLOW		168.6500	110.9	168.6500	110.9



<b>MEDICAL PLAN</b>	1. Incident Name	2. Date Prepared	3. Time Prepared	4. Operational Period	
	<b>MONTROSE INTERAGENCY DISPATCH AREA</b>	<b>03/2021</b>		<b>2021 Fire Season</b>	
<b>5. Incident Medical Aid Stations</b>					
Medical Aid Stations	City	Address / Location	PHONE	Paramedics	
				Yes	No
River Valley Health Center	OLATHE	308 Main Street	970-323-6141		X
Gunnison Valley Family Health	GUNNISON	707 North Iowa	970-642-8413		X
Telluride Medical Center	TELLURIDE	500 West Pacific Avenue	970-728-3848	X	
Uncompahgre Medical Clinic	NORWOOD	1350 S Aspen St	970-327-4233		X
Hotchkiss West Elk Clinic	HOTCHKISS	230 E. Hotchkiss Ave	970-872-1400		X
Nucla/Naturita Basin Clinic	NATURITA	421 W. Adams St.	970-865-2665		X
Crested Butte Ski Area Clinic	CRESTED BUTTE	32 Crested Mountain Way	970-349-2525		X
Lake City Area Medical Center	LAKE CITY	700 N. Henson Street	970-944-2331	X	
<b>6. Transportation</b>					
<b>A. Ground Ambulance Services</b>					
Name	Address	Phone	Paramedics		
			Yes	No	
<b>Dispatched by Montrose County (WestCo)</b>	1140 N Grand Ave Montrose Co	970-249-9110		X	
Montrose Fire Protection District	441 S Uncompahgre Ave Montrose 81401	970-249-9181	X		
Olathe Fire Protection District	406 S 5 <sup>th</sup> Street Olathe CO 81425	970-323-6234	X		
Ouray County EMS (Ridgeway)	251 N. Railroad Ridgeway CO 81432	970-325-7275	X		
Nucla /Naturita Ambulance	555 Main Street Nucla CO 81424	970-428-7569		X	
Telluride Fire Protection District	131 West Columbia Ave. Telluride, CO 81435	970-728-3801	X		
Paradox Fire Protection District (Nucla/Naturita Ambulance Combined)	2389 600 Rd. Paradox, CO. 81429	970-428-7569		X	
<b>Dispatched by Delta County Dispatch</b>	555 Palmer St Delta Co	970-874-2015		X	
Delta County Ambulance District	60 Heinz St. Delta CO 81416	970-874-7001	X		
North fork Ambulance Assoc.	(HQ) 110 E Hotchkiss Ave. Hotchkiss CO 193 W Hotchkiss Ave. Hotchkiss CO 81419	970-872-4203 970-872-9111	X		
North fork Ambulance Assoc.	405 2 <sup>nd</sup> Street Paonia CO 81428	970-872-9111	X		
North fork Ambulance Assoc.	415 HWY 92 Crawford CO 81415	970-872-9111	X		
<b>Dispatched by San Miguel Dispatch</b>	684 County Rd 63L	970-728-1911		X	
Norwood Fire Protection District	1605 Summit Street Norwood, CO 81423	970-327-4800 970-779-0934	X		
Egnar Fire Protection District	5634 CR H1 Egnar, CO. 81325	970-394-4129 1 <sup>st</sup> responders only		X	
<b>Dispatched by Gunnison County Dispatch</b>	910 W Bidwell Gunnison Co	970-641-8200		X	
Crested Butte Fire Protection District	306 Maroon Ave Crested Butte CO 81224	970-349-5333	X		
Gunnison Valley Hospital-EMS	711 N Taylor St Gunnison CO 81230	970-641-7276	X		
Hinsdale County EMS	700 N Henson Street Lake City CO 81235	970-944-2806	X		
<b>B. Helicopter Air Ambulances</b>					
Name	Location / Latitude & Longitude	Phone	Paramedics		
			Yes	No	
"Care Flight" @ Montrose Memorial	MONTROSE 38° 28.82' x 107° 52.10'	1-800-332-4923	X		
"Care Flight" @ Garfield County Regional Airport	RIFLE 39° 31.37' x 107° 43.27'	1-800-332-4923	X		
"Flight for Life" @ Mercy Medical	DURANGO 37° 14.17' x 107° 49.66'	1-800-332-3123	X		
"Flight for Life" @ Summit County Medical Center	FRISCO 39° 34.16' x 106° 04.72'	1-800-332-3123	X		
"Classic Aeromedical" @ Valley View Hospital	GLENWOOD SPRINGS 39° 31.95' x 107° 19.29'	1-800-444-9223	X		
<b>C. Fixed Wing Air Ambulance</b>					
Name	Location / Latitude & Longitude	Phone	Paramedics		
			Yes	No	

"Care Flight" @ Walker Field	GRAND JUNCTION	39° 07.34' x 108° 31.60'	1-800-332-4923	X
"Classic Aeromedical" @ Craig Airport	CRAIG	40° 29.71' x 107° 31.30'	1-800-444-9223	x

#### 7. Hospitals

Name	Address	Travel Time		Phone	Helipad		Burn Center	
		Air	Grnd		Yes	No	Yes	No
Montrose Memorial	800 South 3 <sup>rd</sup> MONTROSE			970-249-2211	X			X
Delta County Memorial	1501 E. 3 <sup>rd</sup> St. DELTA			970-874-7681	X			X
St. Mary's	2635 N 7 <sup>th</sup> Street & Patterson GRAND JUNCTION			970-298-2273	X			X
Gunnison Valley	711 N. Taylor St. GUNNISON			970-641-1456	X			X

#### 8. Burn Centers

Name	Address	Travel Time		Phone	Helipad		Burn Center	
		Air	Grnd		Yes	No	Yes	No
The Children's Hospital Burn Center	13123 E 16 <sup>th</sup> Ave AURORA, CO			720-777-6604	X			X
University of Colorado Health Science Center	12605 E 16 <sup>th</sup> Ave AURORA, CO			720-848-7583 720-848-1849	X			X
North Colorado Medical Center	1801 16 <sup>th</sup> Street GREELEY, CO			866-806-6262	X			X
University Hospital Burn Center	50 North Medical Dr. SALT LAKE CITY, UT			Air Med 801-581-2700	X			X
Arizona Burn Center at Maricopa Medical Center	2601 E. Roosevelt PHOENIX, AZ 85008			602-344-5726	X			X
Burn Center-Albuquerque University of New Mexico	2211 Lomas Blvd NE ALBUQUERQUE, NM <i>*unable to accept &gt;20% burn area patients*</i>			505-272-2721	X			X

<b>OWCP Contact for FS Employees</b>	ASC/OWCP M-F 07-1700	<b>877-372-7248 opt-2</b>
<b>OWCP Contact for BLM Employees</b>	OWCP Contact	<b>303-239-3938</b>
<b>OWCP Contact for NPS Employees</b>	OWCP Contact; Ryan Thrush Or <u>Chris Mengel</u>	<b>970-596-5143</b> <b>970-765-1672</b>
<b>OWCP Contact for DFPC Employees</b>	Broadspire Workers Comp. Human Resources-Monica	<b>303-239-4544</b>

(Continued)

#### 9. Medical Emergency Procedures

All major medical incidents will be reported through Montrose Interagency Dispatch Center repeater channels. Declare "MEDICAL EMERGENCY, PLEASE CLEAR THE AIR". Provide dispatch with type of injury, # of personnel injured, and basic vital signs. **Utilize the Medical Incident Report for size up** (DO NOT USE THE PERSON'S NAME). Utilize crew EMT's and first aid to stabilize and comfort the patient(s). Dispatch, will then contact the Unit FMO and he will notify the agency Representative.

**IMPORTANT NOTE:** All ground ambulance services and helicopter air ambulances are dispatched through County Communication Centers. Contact the appropriate County Dispatch to request emergency medical services.

◆ **V MED28** (RX 155.3400 TX 155.3400 tone 156.7) has been established as the standard Air to Ground Frequency for Air Ambulance/Air MedEvac on wildland fire incidents in the state of Colorado

Agency aircraft such as helitack crews or smokejumper aircraft may have EMT's onboard, and can be utilized for a rapid initial response if available. Mobilize these resources through normal dispatch channels.

Helispots should be a minimum of 100' x 100', and dispatch should be advised of obvious aerial hazards (e.g. power lines). Agency helicopters CAN land at most hospitals with helipads. Please advise dispatch if the patient will be transported by agency helicopter, so arrival can be coordinated with the hospital.

**Wildland Firefighter Burn Injury Protocols (Red Book Ch.7 Pg.179):** After on-site medical response, initial medical stabilization, and evaluation at a primary care facility are completed, District/Field Managers will ensure that any employee whose injuries meet any of the burn injury criteria is immediately referred to the nearest regional burn center. The decision to refer the employee to a burn center may be made by the attending physician or may be requested by the Agency Administrator. Please look in the *Interagency Standards for Fire and Fire Aviation Operations* manual to see a list of burn injury criteria. It is imperative that action is expeditious, as burn injuries are often difficult to evaluate and may take 72 hours to manifest themselves. When there is any doubt as to the severity of the injury, the required action is to immediately refer and transport the employee to a regional burn center.

For "NON-EMERGENCIES" and minor injuries, contact Montrose Dispatch for logistical support. Transportation will be coordinated by dispatch to the appropriate clinic or medical facility.

9. Prepared by: Taylor Ellis IA Dispatcher March 4, 2021	10. Reviewed by:
---	------------------

## BLM Fire Contacts

**\*\*\*NOT for Public Distribution\*\*\***

MANAGEMENT	DUTY STATION	OFFICE COMM	PHONE NUMBERS	EMAIL
LEWIS, BRANDON (Chief 31) SW Colorado FAMU Unit FMO	Montrose	970-240-5351	970-596-5359	<a href="mailto:bclewis@blm.gov">bclewis@blm.gov</a>
CHAPPELL, RANDY (DC 31) Associate Unit FMO	Montrose	970-240-5373	970-596-6343 C	<a href="mailto:rchappell@blm.gov">rchappell@blm.gov</a>
MEGEL, MIKE (BC 31) BLM Fire Operations Specialist	Montrose	970-240-5358	970-424-2749 WC 719-349-1931 C	<a href="mailto:mmegel@blm.gov">mmegel@blm.gov</a>
VEO, LORI BLM Fire Business	Montrose	970-240-5356	970-596-1510 C	<a href="mailto:lveo@blm.gov">lveo@blm.gov</a>
HARMS, DEANNA (Prevention 31) BLM Fire Mitigation/Education	Montrose	970-240-5317	970-596-0430 C	<a href="mailto:dharms@blm.gov">dharms@blm.gov</a>
<b>SW BLM UNIT DO</b>			970-240-5349 C	
<b>ENGINE 3421</b>				
ELLIS, BRENNON Engine Captain	Montrose	970-240-1072	970-209-2991 WC 970-209-4873 C	<a href="mailto:bellis@blm.gov">bellis@blm.gov</a>
GROSS, FRED Asst. Engine Captain	Montrose	970-240-1073	970-209-8665 WC 505-690-9651 C	<a href="mailto:fgross@blm.gov">fgross@blm.gov</a>
CHYNOWETH, JAYDEN Crewmember	Montrose	970-240-5370	970-209-3411	<a href="mailto:jchynoweth@blm.gov">jchynoweth@blm.gov</a>
AUSTIN, MAX Crewmember	Montrose	970-240-5370	714-794-4445	<a href="mailto:maustin@blm.gov">maustin@blm.gov</a>
MORRIS, EJ Crewmember	Montrose	970-240-5370	970-417-8430	<a href="mailto:ejmorris@blm.gov">ejmorris@blm.gov</a>
<b>ENGINE 3629</b>				
WROBLEWSKI, JOHN Engine Captain	Montrose	970-240-5331	970-644-1102 WC 586-202-5990	<a href="mailto:jwroblewski@blm.gov">jwroblewski@blm.gov</a>
VANNURDEN, JOE Asst. Engine Captain	Montrose	970-240-5319	970-275-0466 WC 970-901-0712	<a href="mailto:jvannurden@blm.gov">jvannurden@blm.gov</a>
URQUHART, DARYNN Crewmember	Montrose		970-250-6933	
KELLEY, KATE Crewmember	Montrose		415-306-4018	
GERJOL, MATT	Montrose		847-655-6160	



<b>ENGINE 3418</b>				
<b>BLAIR, PATRICK Engine Captain</b>	Norwood	970-327-4407	970-778-6369 WC 719-207-6727 C	<a href="mailto:pblair@blm.gov">pblair@blm.gov</a>
<b>TAYLOR, ZACH Asst. Engine Captain</b>	Norwood	970-324-4407	970-209-6239 WC 860-377-4437 C	<a href="mailto:ztaylor@blm.gov">ztaylor@blm.gov</a>
<b>FAST, JERROD Crewmember</b>	Norwood	970-327-4407	970-708-8150	<a href="mailto:jfast@blm.gov">jfast@blm.gov</a>
<b>HLAVIN, IAN Crewmember</b>	Norwood	970-327-4407	440-821-9599	
<b>HOOD, LANCE Crewmember</b>	Norwood	970-327-4407	970-985-8701	
<b>FUELS</b>				
<b>SAVAGE, JAMES (DIV 31) SWD Fuels Specialist</b>	Montrose	970-240-5317	970-216-6534	<a href="mailto:jsavage@blm.gov">jsavage@blm.gov</a>
<b>BARRETT, IAN (BC 34) Tres Rios Fuels Specialist</b>	Dolores	970-882-1138	970-676-1010	<a href="mailto:ipbarrett@blm.gov">ipbarrett@blm.gov</a>
<b>CORBIN, TYLER Fuels Tech</b>	Dolores	970-882-1139	970-799-2957	<a href="mailto:tcorbin@blm.gov">tcorbin@blm.gov</a>
<b>STARK, RUSTY (BC 32) Uncompahgre Fuels Specialist</b>	Montrose	970-240-5393	970-309-4089 C	<a href="mailto:rmstark@blm.gov">rmstark@blm.gov</a>
<b>STEVENS, BRIAN (BC-33) Gunnison Fuels Specialist</b>	Gunnison	970-642-4950	970-596-3635 C	<a href="mailto:bwstevens@blm.gov">bwstevens@blm.gov</a>

## BLM Duty Stations

**Montrose Duty Station**  
2465 S. Townsend Ave.  
Montrose, CO. 81401  
**Phone:** 970-249-1010  
**Fax:** 970-240-5369

**Norwood Duty Station**  
P.O. Box A  
16 Hazel  
Norwood, CO. 81423  
**Phone:** 970-327-4407

**Gunnison Duty Station**  
210 W. Spencer, Suite A  
Gunnison, CO. 81230  
**Phone:** 970-642-4940  
**Fax:** 970-642-4990

**24 Hour Phone:** 970-249-1010  
**Email:** [montrosedispatch@gmail.com](mailto:montrosedispatch@gmail.com)

## USFS Fire Contacts

**\*\*\*Not for Public Distribution\*\*\***

MANAGEMENT	DUTY STATION	OFFICE COMM	PHONE NUMBERS	EMAIL
<b>DELTA SO</b>				
TAYLOR, CORDELL (Chief 1) Forest FMO	Delta	970-874-6619	970-615-0922 WC 435-650-0159 C	<a href="mailto:cordell.taylor@usda.gov">cordell.taylor@usda.gov</a>
STAFFORD, SEAN (Chief 2) Deputy Forest FMO	Delta	970-874-6622	541-228-5878	<a href="mailto:Sean.stafford@usda.gov">Sean.stafford@usda.gov</a>
ROBERTSON, STEWART Forest Fuels Specialist	Delta	970-874-6643		
<b>PIO &amp; SAFTEY</b>				
PHILLIPS, KIMBERLEE FS Public Information Officer	Delta	970-874-6717	970-589-0842 WC 928-245-6141 PC	<a href="mailto:kim.phillips@usda.gov">kim.phillips@usda.gov</a>
SPRADLING, RUTH FS Safety Officer	Delta	970-874-6670	970-417-0515 C	<a href="mailto:ruth.spradling@usda.gov">ruth.spradling@usda.gov</a>
<b>WEST ZONE RD</b>				
ROBINSON, COREY (Division 5) West Zone FS FMO	Norwood	970-327-5409(M)	970-901-6691 WC 928-380-6171 C	<a href="mailto:corey.robinson@usda.gov">corey.robinson@usda.gov</a>
REECE, JUSTIN (BC51) Norwood FS AFMO	Norwood	970-555-4353	970-261-9757 PC 970-708-8953 WC	<a href="mailto:justin.reece@usda.gov">justin.reece@usda.gov</a>
BRANTINGHAM, ERIC (BC52) FS Fuels Specialist	Norwood	970-327-4261 x4355	970-729-0562 WC	<a href="mailto:eric.brantingham@usda.gov">eric.brantingham@usda.gov</a>
<b>ENGINE E- 651</b>				
SCHULTZ, MICHAEL (Cpt51) Engine Captain	Norwood	970-327-4261 X4351	970-708-8984 WC	<a href="mailto:michael.schultz@usda.gov">michael.schultz@usda.gov</a>
SMITH, IAN P Asst. Engine Captain	Norwood	970-327-4261	970-275-7731	<a href="mailto:ian.smith@usda.gov">ian.smith@usda.gov</a>
DUDLEY, JESSE WFAP/Senior	Norwood	970-327-4261	970-209-7638	<a href="mailto:jesse.c.dudley@gmail.com">jesse.c.dudley@gmail.com</a>
HENSLEY, CHRIS Senior FFTR	Norwood	970-327-4261	402-980-8591	
SWEET, MICHAEL Crewmember	Norwood	970-327-4261	518-488-9408	<a href="mailto:sweetmichael16@gmail.com">sweetmichael16@gmail.com</a>
<b>ENGINE E-661</b>				
RUSSELL, CODY Engine Captain	Montrose	970-240-5365	970-596-4672 WC 970-417-7993 PC	<a href="mailto:cody.russell@usda.gov">cody.russell@usda.gov</a>
PABLOFF, DEREK Asst. Engine Captain	Montrose	970-240-5364	970-852-1304 WC 970-852-1304 PC	<a href="mailto:derek.pabloff@usda.gov">derek.pabloff@usda.gov</a>
MASDEN, MONTANA ASFEQ	Montrose		970-901-0220	<a href="mailto:montana.masden@usda.gov">montana.masden@usda.gov</a>
PINO, ARIEL WFAP/Senior	Montrose		970-901-7735	<a href="mailto:ariel.pino@usda.gov">ariel.pino@usda.gov</a>
FIX, SHAWN Crewmember	Montrose		814-330-1122	<a href="mailto:fixxy330@gmail.com">fixxy330@gmail.com</a>
<b>ENGINE E-663</b>				
OAK, JOSH	Montrose	970-240-5355	970-901-5224	<a href="mailto:joshua.oak@usda.gov">joshua.oak@usda.gov</a>

<b>Fuels Lead</b>				
Nicolas Hotsenpiller <b>Crewmember</b>	Montrose			<b>970-712-3451</b>
Andrew Workman <b>Crewmember</b>	Montrose			<b>713-826-0367</b>

NAME/TITLE	DUTY STATION	OFFICE COMM	PHONE NUMBERS	EMAIL
<b>EAST ZONE RD</b>				
MEDINA, PAT (Division 7) <b>East Zone FS FMO</b>	Gunnison	970-642-4407	970-596-1086 C 970-641-4586 H	<a href="mailto:pat.medina@usda.gov">pat.medina@usda.gov</a>
RAMIREZ, JIM (BC 71) <b>East Zone FS AFMO</b>	Gunnison	970-642-4431	970-615-0245 WC 307-690-6619 C	<a href="mailto:james.ramirez2@usda.gov">james.ramirez2@usda.gov</a>
CARR, DAVE (BC 72) <b>Fuels Specialist</b>	Gunnison	970-642-4441	970-964-7936 WC 719-221-5410 H	<a href="mailto:david.carr@usda.gov">david.carr@usda.gov</a>
<b>ENIGINE E-671</b>				
ROMERO, RYAN <b>Engine Captain</b>	Gunnison	970-642-4411	970-596-9280	<a href="mailto:ryan.romero@usda.gov">ryan.romero@usda.gov</a>
KEENAN, TREVOR <b>Asst. Engine Captain</b>	Gunnison	970-641-4456	970-471-2626	<a href="mailto:trevor.keenan@usda.gov">trevor.keenan@usda.gov</a>
PALADINO, DANIEL <b>AFEO</b>	Gunnison	970-641-0471	530-414-1460	<a href="mailto:daniel.paladino@usda.gov">daniel.paladino@usda.gov</a>
KOINVA, WENDY <b>WFAP/Senior</b>	Gunnison	970-642-4457	480-416-9633	<a href="mailto:wendy.koinva@usda.gov">wendy.koinva@usda.gov</a>
COURTNEY, SHANNON <b>Crewmember</b>	Gunnison	970-641-0471	832-427-9786	<a href="mailto:shannoncourtney16@gmail.com">shannoncourtney16@gmail.com</a>
<b>SENTINEL</b>				
ENGEL, THEO <b>Module Leader</b>	Gunnison	970-642-4403	970-596-4336 C 970-596-8601	<a href="mailto:theo.engel@usda.gov">theo.engel@usda.gov</a>
SMITH, SCOTT <b>Assistant</b>	Gunnison	970-641-0471	719-352-2399	<a href="mailto:benjiman.smith@usda.gov">benjiman.smith@usda.gov</a>
DZIEKAN, PAUL <b>Crewmember</b>	Gunnison	970-642-4419	585-301-3734	<a href="mailto:paul.dziekan@usda.gov">paul.dziekan@usda.gov</a>
STOORZA, ERIC <b>Crewmember</b>	Gunnison	970-641-0471	970-209-3837	<a href="mailto:flunnel@hotmail.com">flunnel@hotmail.com</a>
MARTINEZ, WILLIAM <b>Crewmember</b>	Gunnison	970-641-0471	719-641-2275	<a href="mailto:martinez.willy111@gmail.com">martinez.willy111@gmail.com</a>
LOWRING, GEORGE <b>Crewmember</b>	Gunnison	970-641-0471	317-987-8667	<a href="mailto:george.lowring@gmail.com">george.lowring@gmail.com</a>
<b>NORTH ZONE</b>				
SANDERS, BEN (Division 2) <b>North Zone FMO</b>	Grand Junction	970-263-5824	541-589-9777	<a href="mailto:ben.sanders@usda.gov">ben.sanders@usda.gov</a>
Thomas Grubbs (BC 21) <b>North Zone AFMO</b>	Grand Junction	970-263-5820	970-589-1294	<a href="mailto:thomas.grubbs@usda.gov">thomas.grubbs@usda.gov</a>
QUIGLEY, PHILIP	Grand	970-200-0723	970-200-5624	<a href="mailto:philip.quigley@usda.gov">philip.quigley@usda.gov</a>

<b>Skyway Mod Lead</b>	Junction			
SPURR, TIM <b>Skyway Asst. Mod Lead</b>	Grand Junction	970-263-5810	970-263-0458	<a href="mailto:timothy.spurr@usda.gov">timothy.spurr@usda.gov</a>
<b>FUELS</b>				
Wheeler, Dustin ( <b>Fuels 2</b> ) <b>Grand Valley FS Fuels Tech</b>	Grand Junction		970-640-7691	<a href="mailto:dustin.wheeler@usda.gov">dustin.wheeler@usda.gov</a>
<b>NAME/TITLE</b>	<b>DUTY STATION</b>	<b>OFFICE COMM</b>	<b>PHONE NUMBERS</b>	<b>EMAIL</b>
<b>JOB Corp</b>				
OWENS, PAT ( <b>Battalion 11</b> ) <b>Job Corp FS AFMO</b>	Collbran	970-644-1039	970-644-1039 C 303-870-7807 H	<a href="mailto:patrick.owens@usda.gov">patrick.owens@usda.gov</a>
FOLEY, TODD <b>Senior Firefighter</b>	Collbran	970-487-2043	970-852-1305 C 970-250-4226 H	<a href="mailto:todd.foley@usda.gov">todd.foley@usda.gov</a>
BOSMAN, BROOKE <b>Senior Firefighter</b>	Collbran	970-487-2043	970-260-3384 C 720-771-7765 H	<a href="mailto:brooke.bosman@usda.gov">brooke.bosman@usda.gov</a>
CALLEN, SCOTT <b>Senior Firefighter</b>	Collbran	970-487-2043	916-832-8244	<a href="mailto:scott.callen@usda.gov">scott.callen@usda.gov</a>

## GMUG NF Duty Stations

**Montrose Station**  
2465 S. Townsend Ave.  
Montrose, CO. 81401  
**Phone:** 970-249-1010  
**Fax:** 970-240-5369

**Norwood Station**  
P.O Box 388  
1150 Forest St  
Norwood, CO. 81423  
**Phone:** 970-327-4261  
**Fax:** 970-327-4854

**Gunnison Station**  
216 N. Colorado Ave.  
Gunnison, CO 81230  
**Phone:** 970-641-0471  
**Fax:** 970-642-4425

**Grand Junction/Paonia NZ –  
Grand Valley RD**  
2777 Crossroads Blvd #1  
GJ, CO 81506  
**Phone:** 970-242-8211  
**Fax:** 970-263-5819

**Paonia RD**  
P.O. Box 1030  
403 N Rio Grande Ave.  
Paonia, CO 81428  
**Phone:** 970-527-4131  
**Fax:** 970-527-4151

**Collbran:** PO Box 330/209 High St.  
**Job Corps Center:** 57608 Hwy 330  
Collbran, CO 81624  
**Phone:** 970-487-3534  
**Fax:** 970-487-3094

**24 Hour Phone:** 970-249-1010  
**Email:** COMTC@firenet.gov

**DFPC Fire Contacts\*\*\*Not for Public Distribution\*\*\***

MANAGEMENT DFPC	DUTY STATION	OFFICE COMM	PHONE NUMBERS	EMAIL
<b>DUARTE, PAUL</b> <b>Southeast District Chief</b>	Alamosa		719-850-2387	<a href="mailto:paul.duarte@state.co.us">paul.duarte@state.co.us</a>
<b>Lanoue, Charles</b> <b>Southwest District Chief</b>	Montrose		970-379-8139	<a href="mailto:charles.lanoue@state.co.us">charles.lanoue@state.co.us</a>
<b>HUTT, TANNER</b> <b>Gunnison River Basin BC</b>	Montrose		970-787-0880	<a href="mailto:tanner.hutt@state.co.us">tanner.hutt@state.co.us</a>
<b>ODOM, LUKE</b> <b>Uncompahgre River BC</b>	Montrose		970-773-4259	<a href="mailto:luke.odom@state.co.us">luke.odom@state.co.us</a>
<b>MCCULLEY, RYAN</b> <b>Colorado River Region BC</b>	Grand Junction		970-765-6279	<a href="mailto:ryan.mcculley@state.co.us">ryan.mcculley@state.co.us</a>
<b>DAVIS, LOGAN</b> <b>San Juan River BC</b>	Durango		970-844-0630	logan.davis@state.co.us
<b>PARSON, SAM</b> <b>Northwest District Chief</b>	Steamboat		720-556-4247	<a href="mailto:sam.parson@state.co.us">sam.parson@state.co.us</a>
<b>HELICOPTER TYPE 2</b>				
<b>MOORE, TRAVIS</b> <b>Helicopter Manager</b>	Montrose	970-765-8408	970-623-5779	<a href="mailto:ts.moore@state.co.us">ts.moore@state.co.us</a>
<b>CROSSWHITE, CLAYTON</b> <b>Asst. Helicopter Manager</b>	Montrose	970-765-8408	970-658-6247	clay.crosswhite@state.co.us
<b>WEIDEMUELLER, CASS</b> <b>Helicopter Crew Member</b>	Montrose	970-765-8408	970-222-2784	cass.weidemuller@state.co.us
<b>BICKFORD, JEREK</b> <b>Helicopter Crew Member</b>	Montrose	970-765-8408	970-623-5474	<a href="mailto:jerek.bickford@state.co.us">jerek.bickford@state.co.us</a>
<b>Coder, Hannah</b> <b>Helicopter Crew Member</b>	Montrose		970-212-6468	<a href="mailto:cass.weidemuller@state.co.us">cass.weidemuller@state.co.us</a>
<b>THORN, TYLER</b> <b>Helicopter Crew Member</b>	Montrose		303-406-3386	<a href="mailto:tyler.thorn@state.co.us">tyler.thorn@state.co.us</a>
<b>O'MAHONEY, MICHAEL</b> <b>Helicopter Crew Member</b>	Montrose		240-205-0124	michael.omahoney@state.co.us
<b>GEER, REBECCA</b> <b>Helicopter Crew Member</b>	Montrose		909-638-9279	rebecca.geer@state.co.us
<b>BELLAH, LESHEM</b> <b>Helicopter Crew Member</b>	Montrose		719-890-0371	leshem.bellah@state.co.us
<b>GOFF, BENJAMIN</b> <b>Helicopter Crew Member</b>	Montrose		970-389-5724	benjamin.goff@state.co.us
<b>MOLNAR, ROMAN</b> <b>Helicopter Crew Member</b>	Montrose			
<b>ENGINE E-4421</b>				
<b>DUENSING, JOE</b> <b>Engine Captain E-4421</b>	Montrose		970-318-6032	<a href="mailto:joe.duensing@state.co.us">joe.duensing@state.co.us</a>
<b>Vacant</b> <b>Asst. Engine Capt. E-4421</b>	Montrose		970-556-9881	
<b>ARCHIBEQUE, CODY</b> <b>Crew Member E-4421(Lead)</b>	Montrose		970-209-1048	<a href="mailto:cody.archibeque@state.co.us">cody.archibeque@state.co.us</a>
<b>MILSTEIN, KADEN</b> <b>Crew Member E-4421</b>	Montrose		970-712-9075	<a href="mailto:kaden.milstein@state.co.us">kaden.milstein@state.co.us</a>

**National Park Service  
Curecanti National Recreation Area  
Black Canyon National Park**

102 Elk Creek  
Gunnison, CO. 81230  
**Phone:** 970-641-2337

**Fax:** 970-641-3127 (Park Headquarters)  
**Fax:** 970-240-0504 (South Rim)

**24 Hour Phone:** 970-641-8201 (Gunnison County Dispatch)  
**24 Hour Phone:** 970-252-4020 (Montrose County Dispatch)

**\*\*\*Not for Public Distribution\*\*\***

NAME/TITLE	DUTY STATION	OFFICE COMM	PHONE NUMBERS	EMAIL
VACANT NPS FMO @ Dinosaur	G.J./ Dinosaur			
GUARINO, MICHAEL NPS Fire Operations Specialist	Grand Junction	970-374-3052	970-629-1908	<a href="mailto:michael_guarino@nps.gov">michael_guarino@nps.gov</a>
BOCKUS, DANGOULE Ecologist	Montrose	970-249-1914 X 432	970-417-7756 C 970-249-3942 H	<a href="mailto:dangoule_bockus@nps.gov">dangoule_bockus@nps.gov</a>
THRUSH, RYAN Black Canyon District Ranger	Montrose	970-249-1914 X 421	970-596-5143 C 970-874-5124 H	<a href="mailto:ryan_thrush@nps.gov">ryan_thrush@nps.gov</a>
KAY, STEVE Black Canyon Area Ranger	Montrose	970-249-1914 X 427	207-837-1391	<a href="mailto:steve_kay@nps.gov">steve_kay@nps.gov</a>
FRITZ, MICHAEL	Montrose		484-387-8455WC	
GRECO, DEANNA Park Superintendent	Gunnison	970-641-2337 X 220	970-452-1375 C	<a href="mailto:deanna_greco@nps.gov">deanna_greco@nps.gov</a>
HARTWIG, KIM Division Chief of Resources	Gunnison	970-641-2337 X 225	970-712-1730 C	<a href="mailto:kim_hartwig@nps.gov">kim_hartwig@nps.gov</a>
MENGEL, CHRISTOPHER Chief Ranger	Gunnison	970-641-2337 X 221	702-419-3369 P 970-765-1672 WC	<a href="mailto:chris_mengel@nps.gov">chris_mengel@nps.gov</a>
POST, MELISSA Blue Mesa District Ranger	Gunnison	970-641-2337 X 246	816-820-6847 H	<a href="mailto:melissa_post@nps.gov">melissa_post@nps.gov</a>

**Ridgway State Park**

28555 Hwy 550  
Ridgway, CO 81432  
**Phone:** 970-626-5822  
**Fax:** 970-626-5825

**24Hour Phone:** 970-249-4392

**Website:** [ridgway.park@state.co.us](mailto:ridgway.park@state.co.us)

NAME/TITLE	CITY STATE	AREA CODE	OFFICE COMM	CELL/PGR	HOME
COPELAND, KIRSTIN Park Manager	Ridgway CO	970	626-5822 X 12	209-9307 (C)	252-9245
FREEBORN, JOHN Senior Ranger	Ridgway CO	970	626-5822 X 17	904-0311 (C)	

