



## UPPER COLORADO RIVER FIRE AND AVIATION MANAGEMENT UNIT

BLM - NORTHWEST DISTRICT

BLM - SOUTHWEST DISTRICT

USFS - WHITE RIVER NATIONAL FOREST

INTERAGENCY



### UPPER COLORADO RIVER SPECIAL INTEREST GROUPS\*

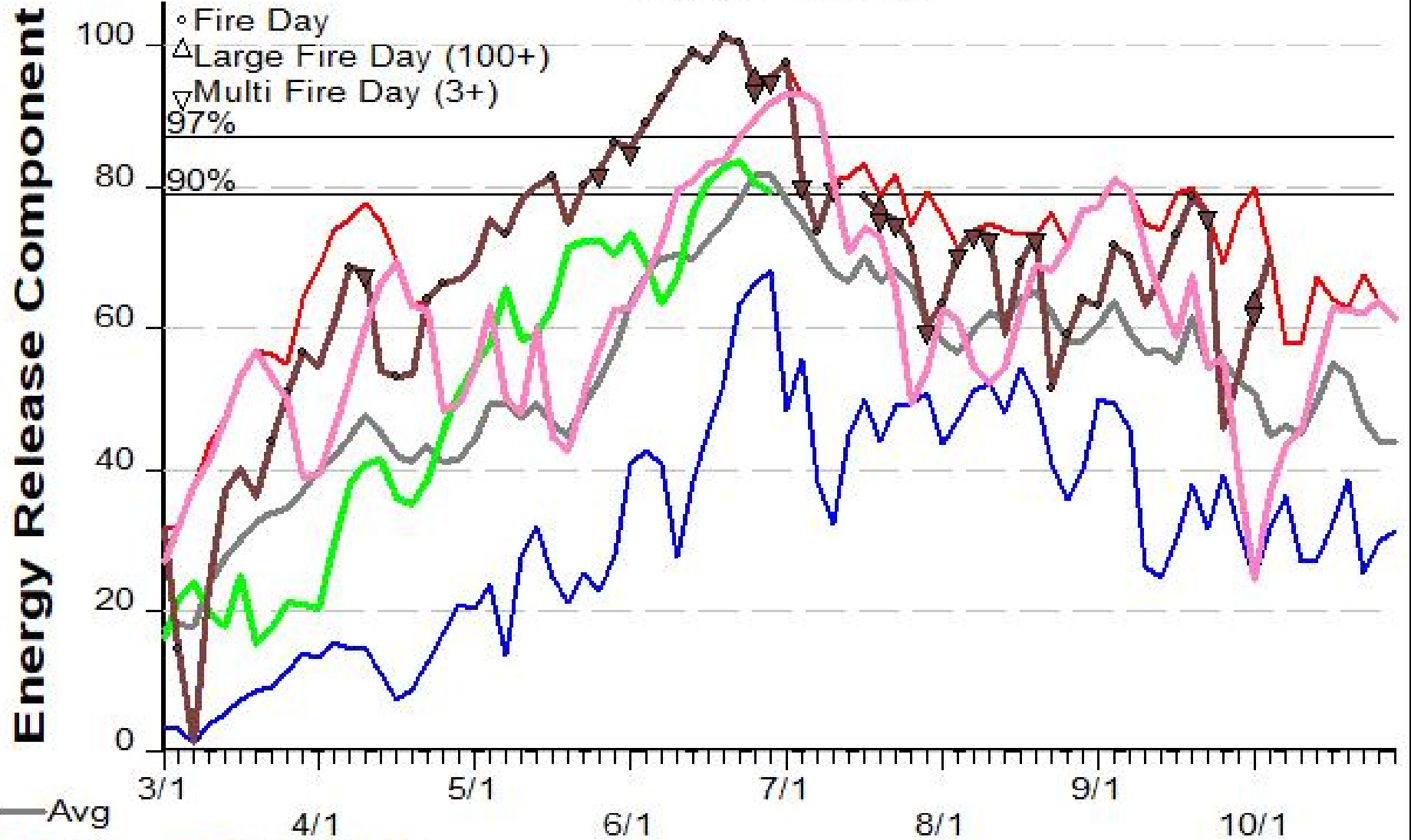
All Special Interest Groups are run using NFDRS Fuel Model G. SIGs are more representative of elevation differences than truly of the fuel model named. SIGs progress upward in elevation from sage/grass at approximately 4500 feet MSL to Mountain Shrub to Timber to Summit Grass at 9500 feet MSL.

\*To graph the current day's ERC for UCR Fuels Special Interest Groups:

- (1) Print the graph(s) of interest,
- (2) go to web page: [http://gacc.nifc.gov/rmcc/dispatch\\_centers/r2gjc/](http://gacc.nifc.gov/rmcc/dispatch_centers/r2gjc/)
- (3) select the Intelligence link on the left side,
- (4) select the "Fire and Resource Status Report",
- (5) from the section "ERC and Adjective Ratings", choose the ERC for the fuel type(s) of interest,
- (6) plot it on the appropriate graph.

UCR SIGS					
Grass Sage Pinion Juniper		Mountain Brush/Aspen		Timber	
Station ID	Station Name	Station ID	Station Name	Station ID	Station Name
051504	Rifle	051504	Rifle	051508	Storm King
051607	Gypsum	051506	Crown	051510	Deep Creek
051608	Hangman	051508	Storm King	051606	Dowd Junction
052407	Pine Ridge	051606	Dowd Junction	051703	Soda Creek
052408	Walker Field	051608	Hangman		
052409	Dominguez	052407	Pine Ridge		
052410	Little Delores	052410	Little Delores		

# SIG - GSPJ 2010 - 2019



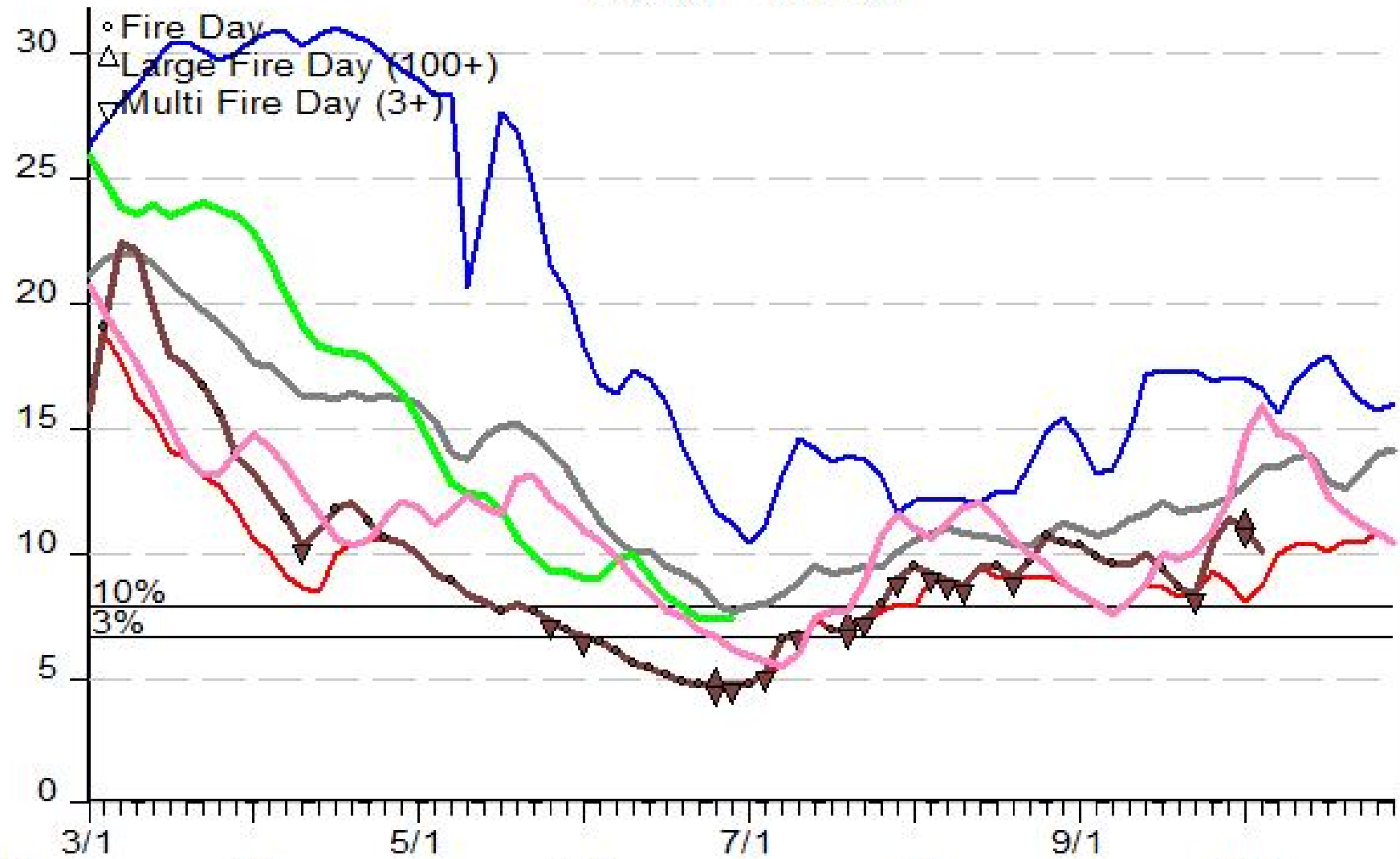
## 3 Day Periods

- Avg
- Max
- Min
- 2020 (0/0/0)
- 2012 (49/3/16)
- 2017 (0/0/0)

Model: 7G  
1969 Wx Observations

# SIG - GSPJ 2010 - 2019

1000-Hour Fuel Moisture



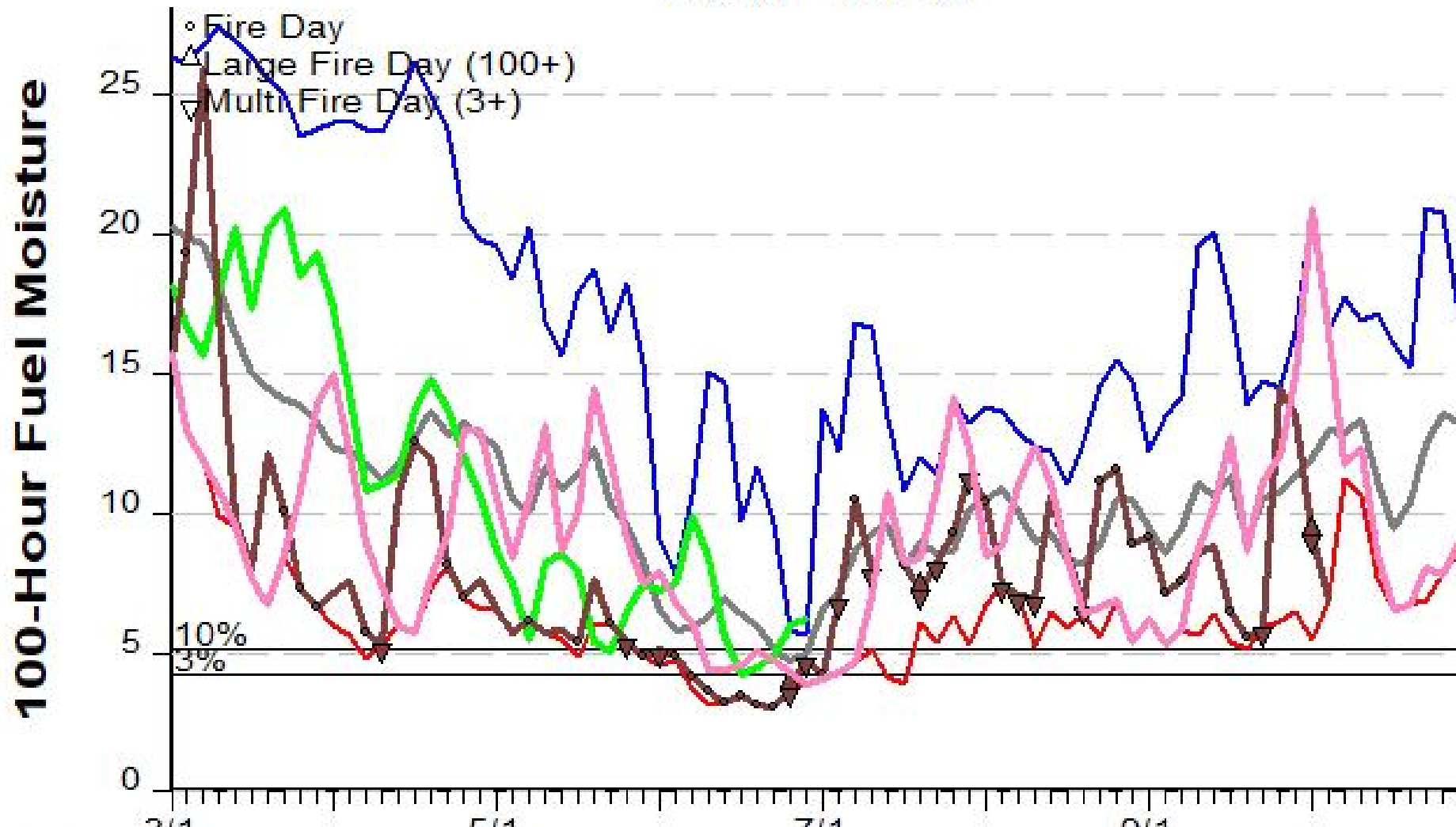
- Avg
- Max
- Min
- 2020 (0/0/0)
- 2012 (49/3/16)
- 2017 (0/0/0)

**3 Day Periods**

Model: 7G  
1969 Wx Observations

FF+5.0 build 20191211 06/29/2020-17:07

# SIG - GSPJ 2010 - 2019



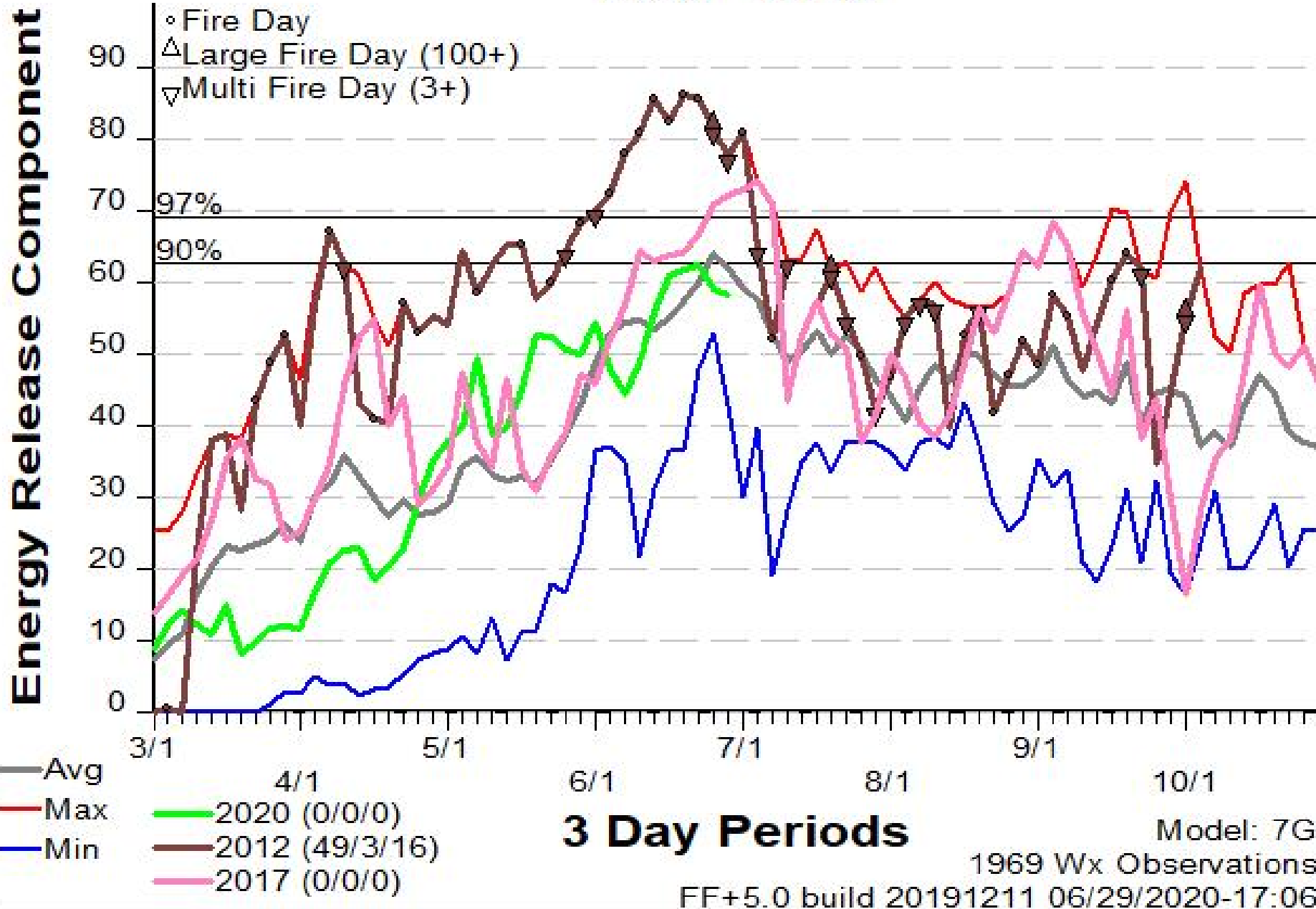
- Avg
- Max
- Min
- 2020 (0/0/0)
- 2012 (49/3/16)
- 2017 (0/0/0)

## 3 Day Periods

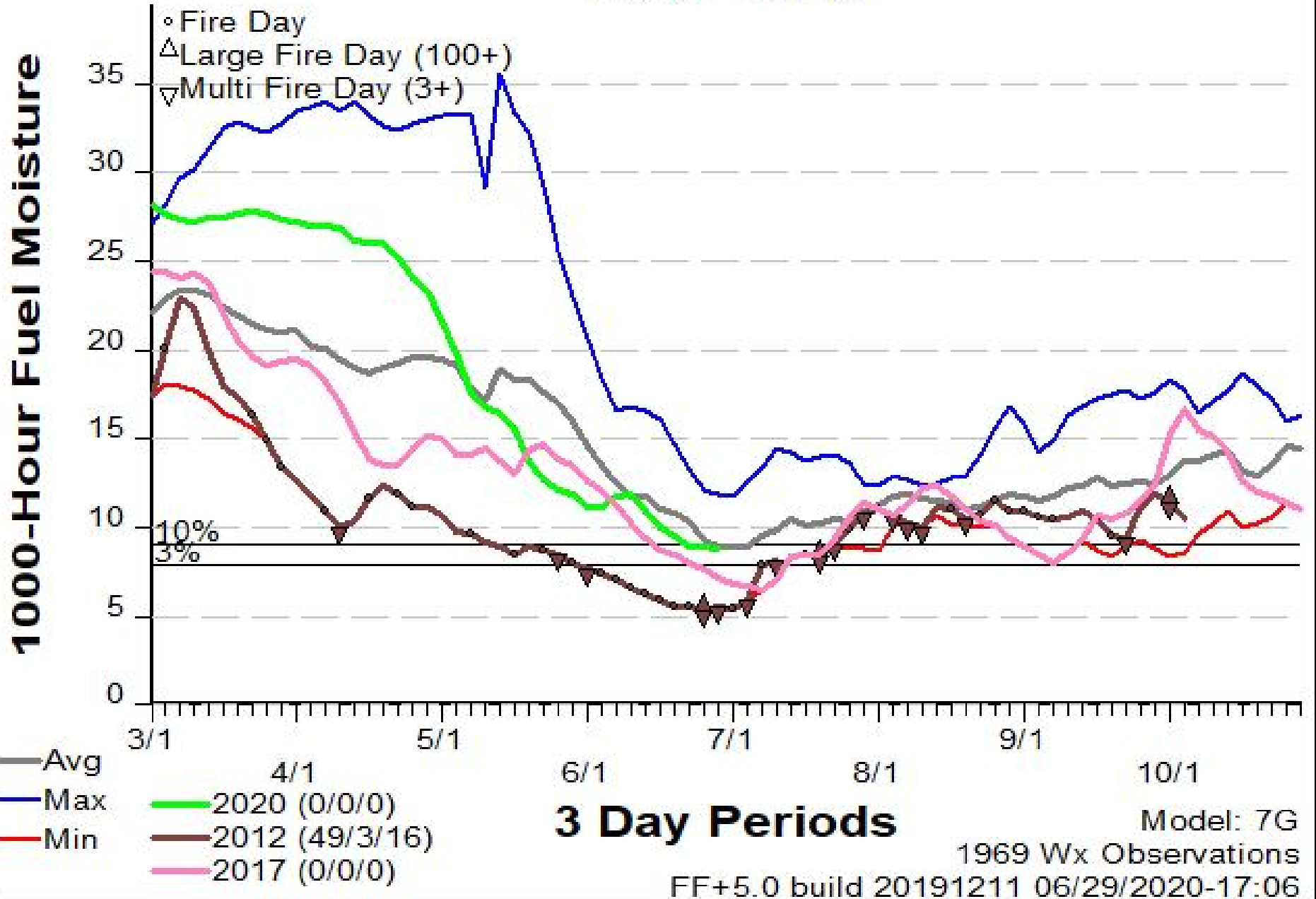
Model: 7G  
1969 Wx Observations

FF+5.0 build 20191211 06/29/2020-17:07

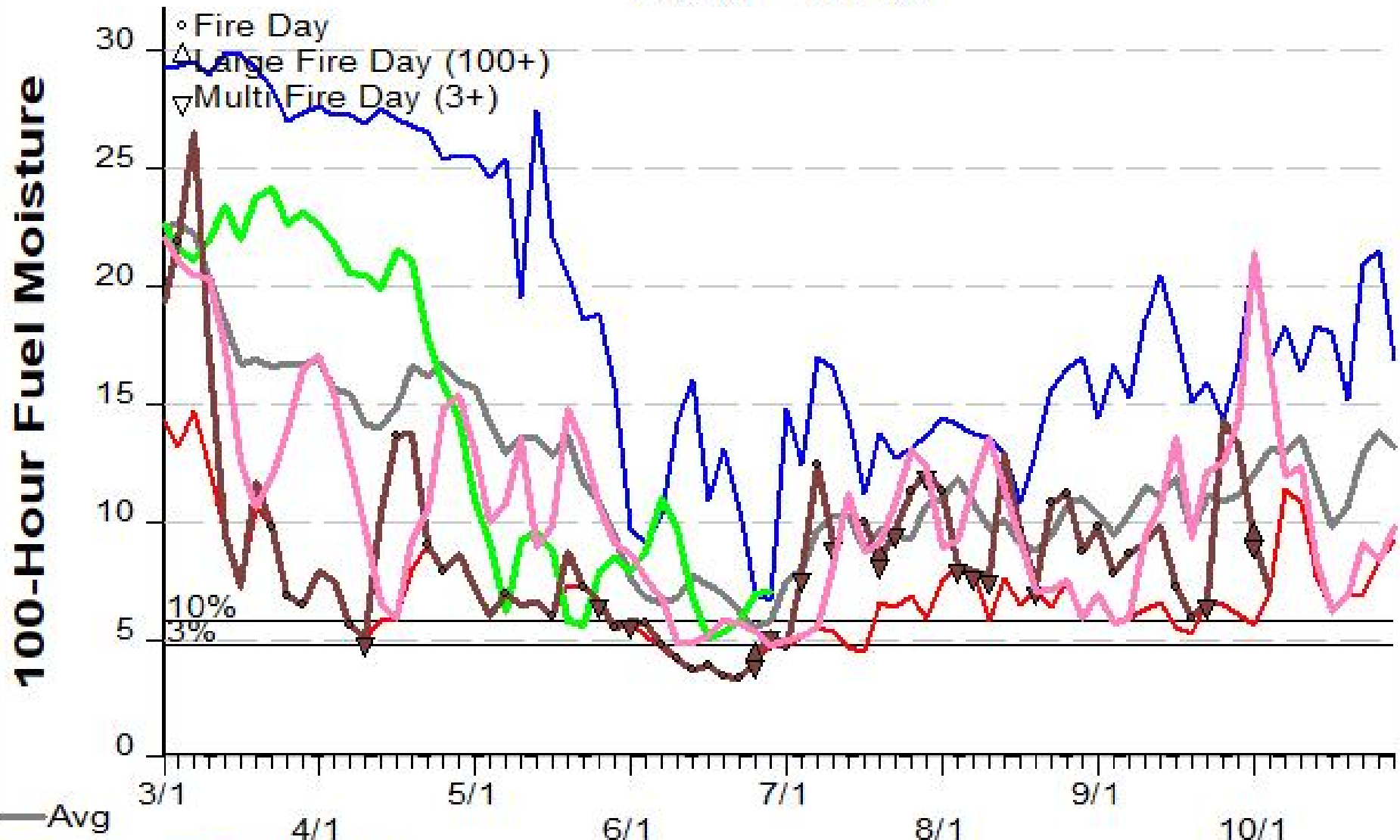
# SIG - Mt Brush Aspen 2010 - 2019



# SIG - Mt Brush Aspen 2010 - 2019



# SIG - Mt Brush Aspen 2010 - 2019



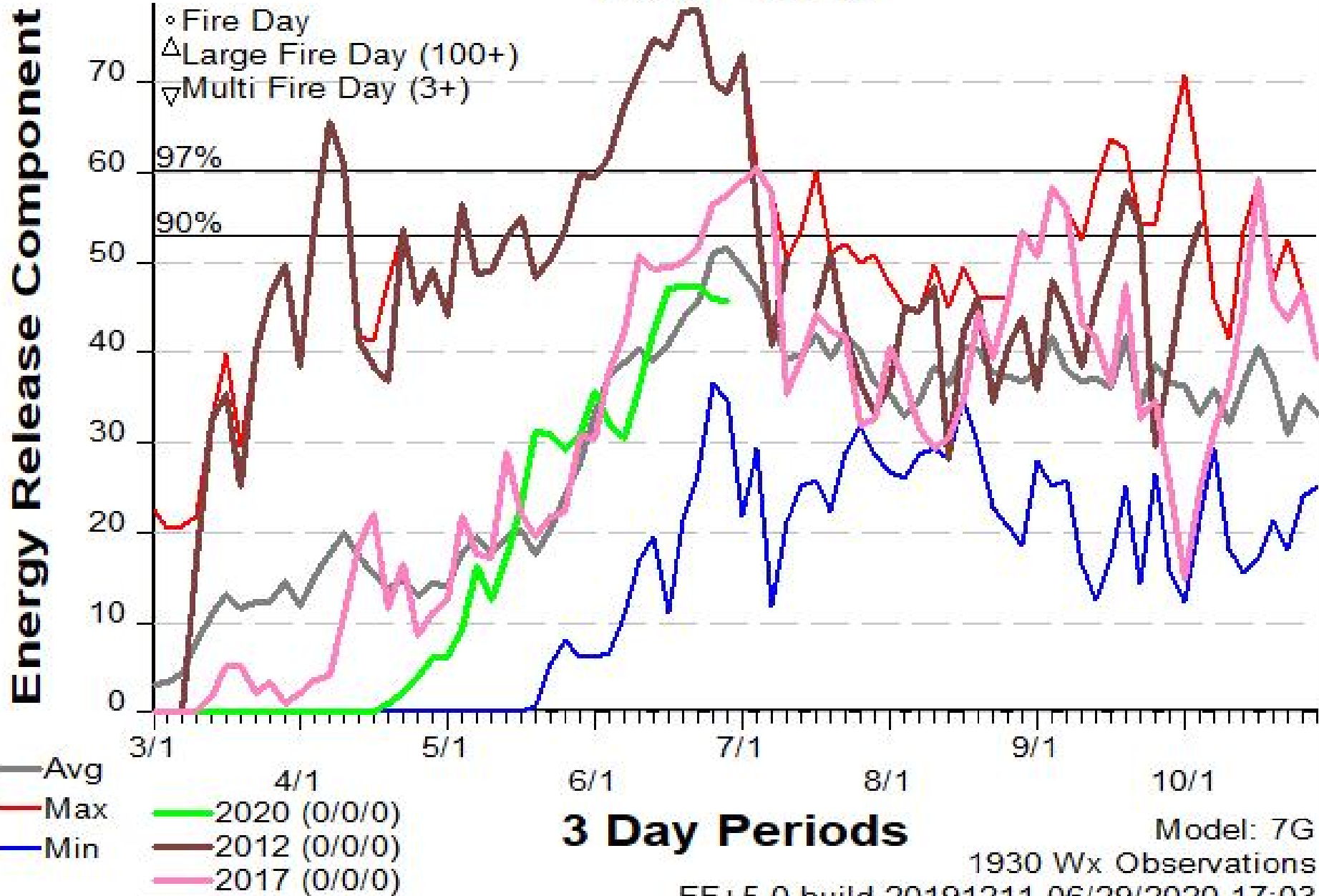
**3 Day Periods**

- Avg
- Max
- Min

- 2020 (0/0/0)
- 2012 (49/3/16)
- 2017 (0/0/0)

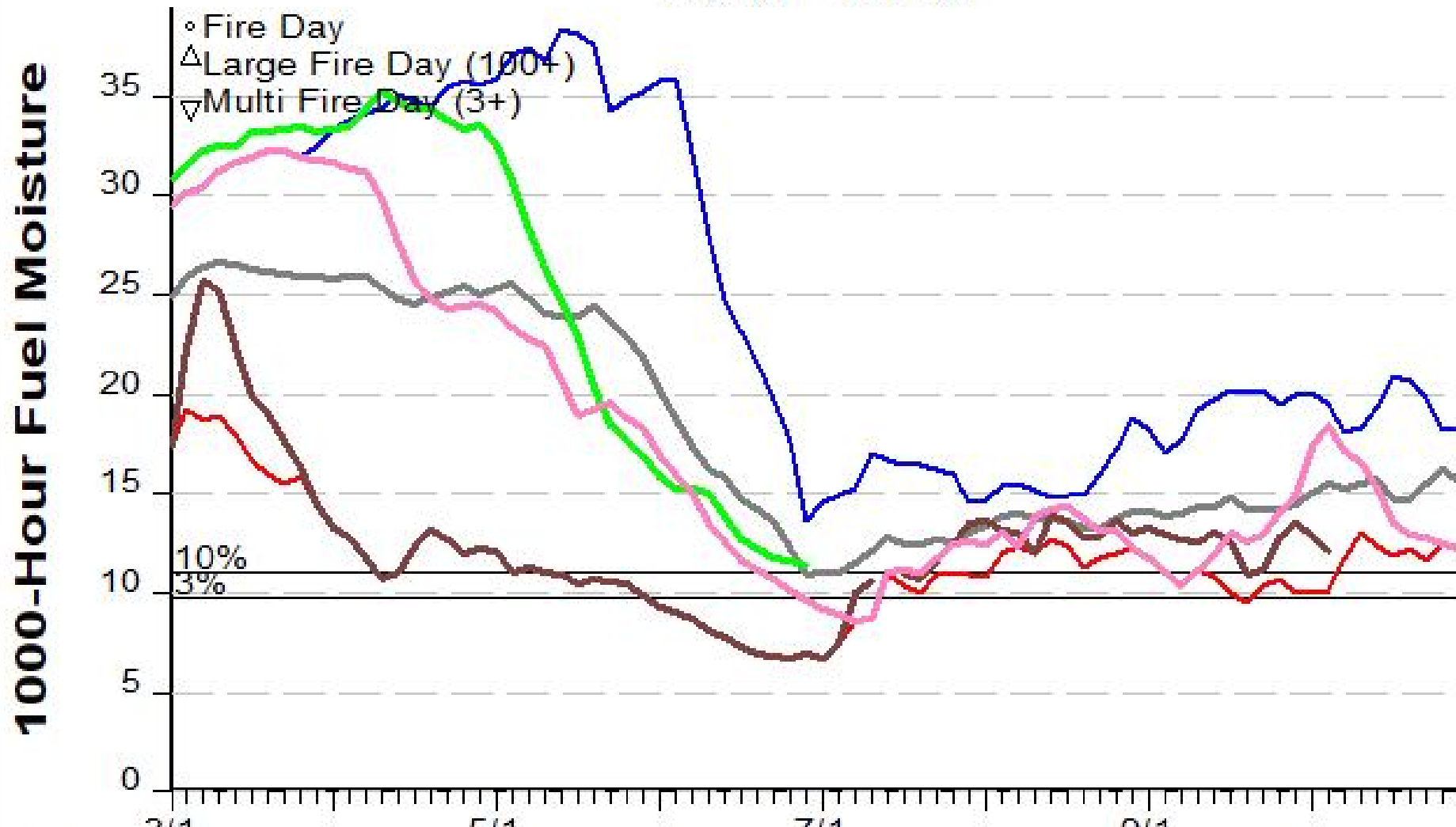
Model: 7G  
1969 Wx Observations

# SIG - Timber 2010 - 2019





# SIG - Timber 2010 - 2019



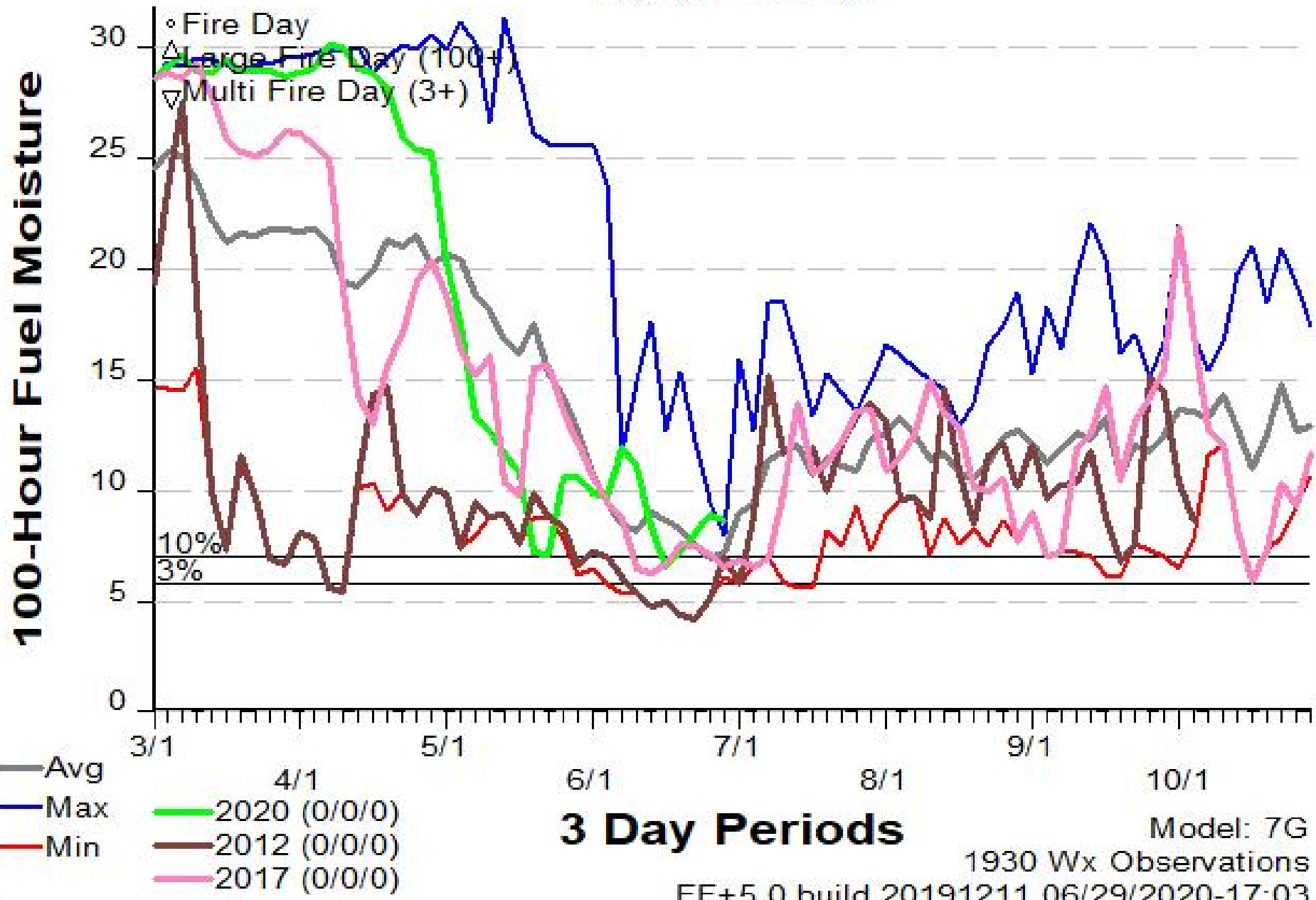
**3 Day Periods**

- Avg
- Max
- Min
- 2020 (0/0/0)
- 2012 (0/0/0)
- 2017 (0/0/0)

Model: 7G  
1930 Wx Observations

FF+5.0 build 20191211 06/29/2020-17:03

# SIG - Timber 2010 - 2019



**3 Day Periods**

Model: 7G  
1930 Wx Observations

FF+5.0 build 20191211 06/29/2020-17:03