

Cody Interagency Dispatch Center 2009 Year-End Report



Cooperating Agencies

Bureau of Land Management
United States Forest Service
National Park Service
Bureau of Indian Affairs
Wyoming State Forestry Division
Big Horn, Freemont, Hot Springs, Park, and Washakie
Counties

http://gacc.nifc.gov/rmcc/dispatch_centers/r2cdc/

CODY INTERAGENCY DISPATCH CENTER 2009 YEAR END REPORT

The 2009 fire season was an average year; spring and early summer were wet, returning to the normal weather patterns that are typical. The first wildfires of the season were several arson caused fires on Shoshone NF, Wyoming State Forestry and BLM in the Sinks Canyon area in February with the final fire of the year occurring in November. Total number of fires, all agencies this season was 130 for 1442 acres. 2 of those were incidents formerly known as WFU's for 328 acres.

The dispatch center supported several extended attack fires, including 1 type 3 incident. In addition, the center mobilized equipment, crews, aircraft, and overhead within the Rocky Mountain Area as well as to Australia, Southwest, Northern Rockies, Great Basin, Pacific Northwest, Alaska, Southern Area and California for incident assignments.

Cody Dispatch was the host dispatch center for the Jackson IHC for 3 months, providing logistical support and dispatch services.

Staffing levels at the dispatch center remained a challenge. The Assistant Dispatch Center Manager was filled in May and the IA Dispatcher/Zone Training position was filled in August. Detailers filled in for the BIA IA dispatch position throughout the fire season. A seasonal dispatcher started in June and worked through October. Fire personnel from the Shoshone North Zone rotated through on a weekly basis in the early part of the year to provide coverage for Rx fire and day to day operations until some dispatch positions could be filled.

442 Incident Actions were processed this past year which included wildfire suppression, prescribed fire support, wildfire use support, all risk incidents, flight following for the regional bug flight, public assists, and flight requests in support of the wildhorse, wilderness, radio maintenance, and sage grouse programs.

The dispatch center faced several challenges due to organizational changes and personnel shortages, but the year was safe and successful.

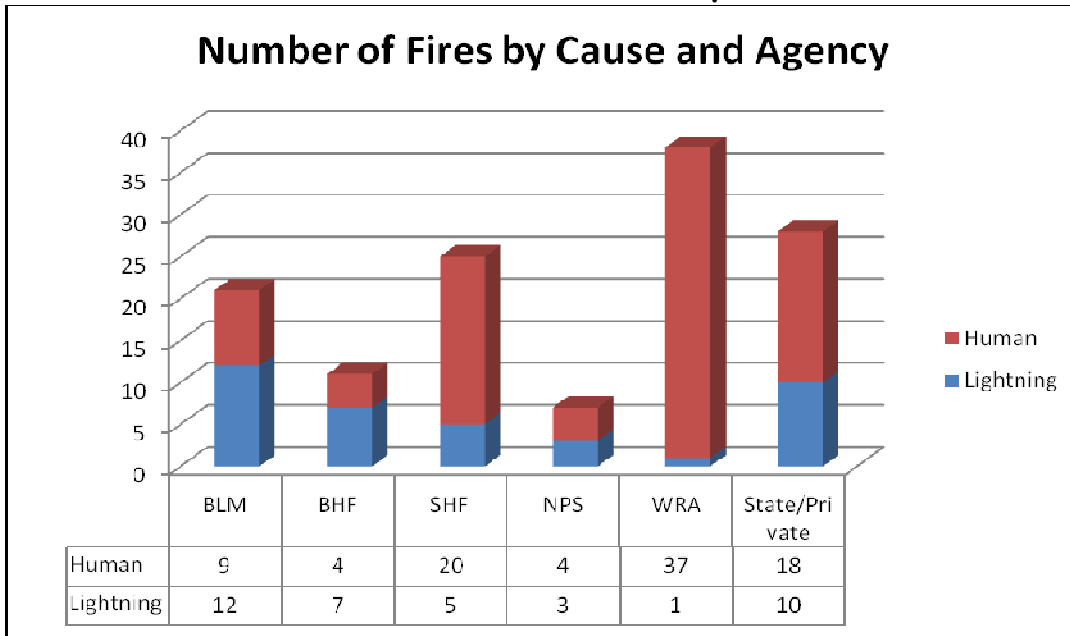
2009 CRC Fire Statistics

	Lightning Acres	Human Acres	# of Lightning Caused	# of Human Caused
BLM*	90.4	66.88	12	9
BHF	0.85	0.4	7	4
SHF	328	3	5	20
NPS	17	0.3	3	4
WRA	333	65	1	37
State/Private	274	263	10	18
Totals	1043.25	398.58	38	92

Totals from columns may not match totals from rows due to rounding.

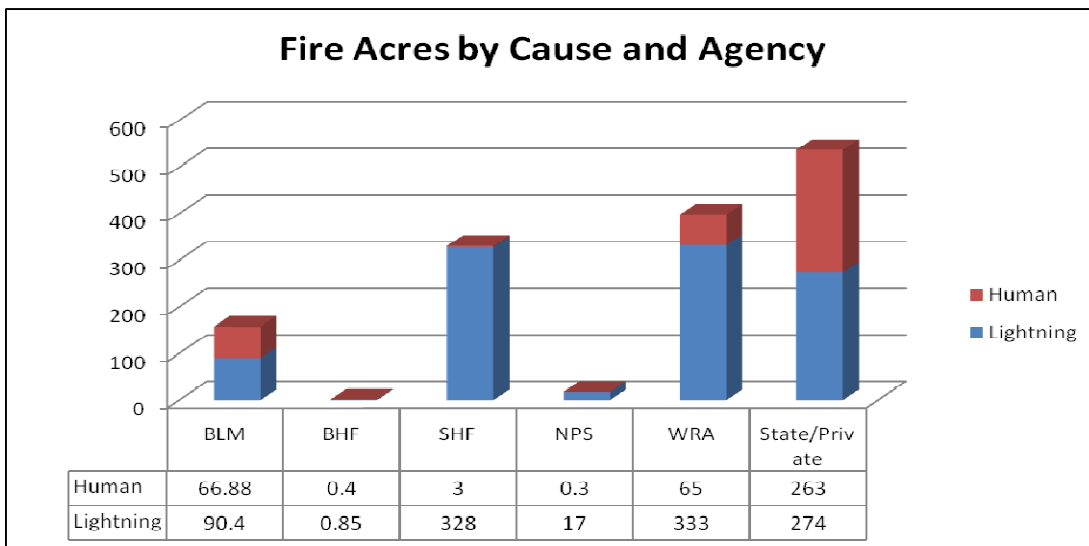
* BLM reported a total of 48 fires on or threatening BLM land

Fire Statistics by Unit



Totals from columns may not match totals from rows due to rounding.

* BLM reported a total of 48 fires on or threatening BLM land





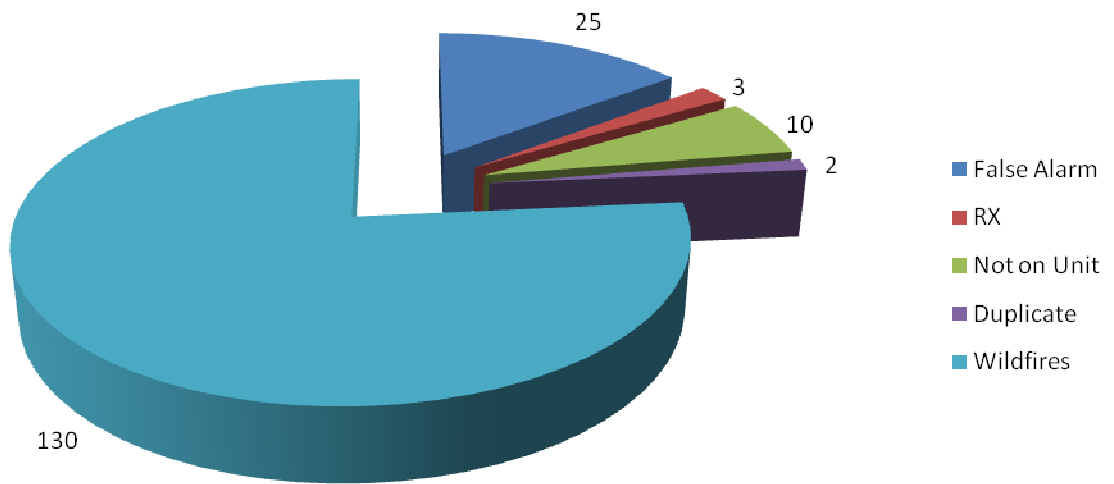
Castle fire

2009 Large Fire Summary

Incident Name	Start Date	Cause	Final Acreage	Agency	State & Unit	Team Name	Team Type
Bench	7/26/09	L	352	CDS	WY-CDS	Decker	Type 3
Duncan	9/06/09	L	333	WRA	WY-WRA	Richards	Type 4
Castle	9/22/09	L	326	SHF	WY-SHF	Robinson	Type 4

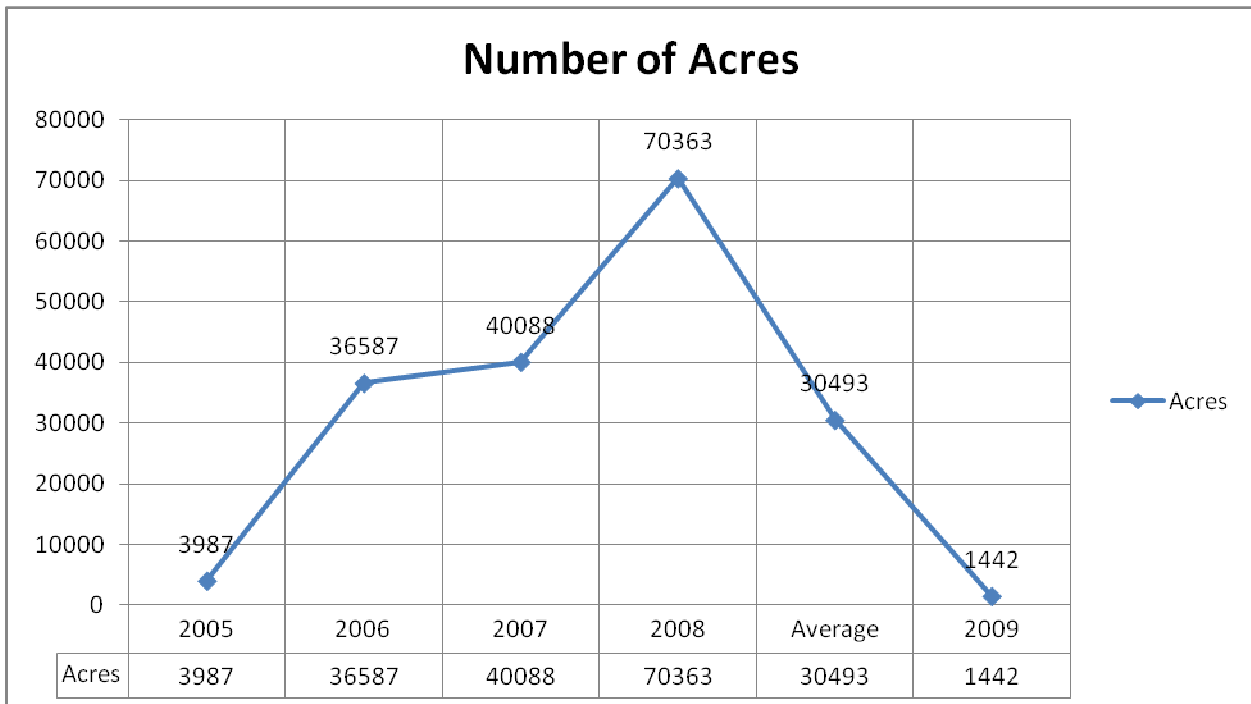
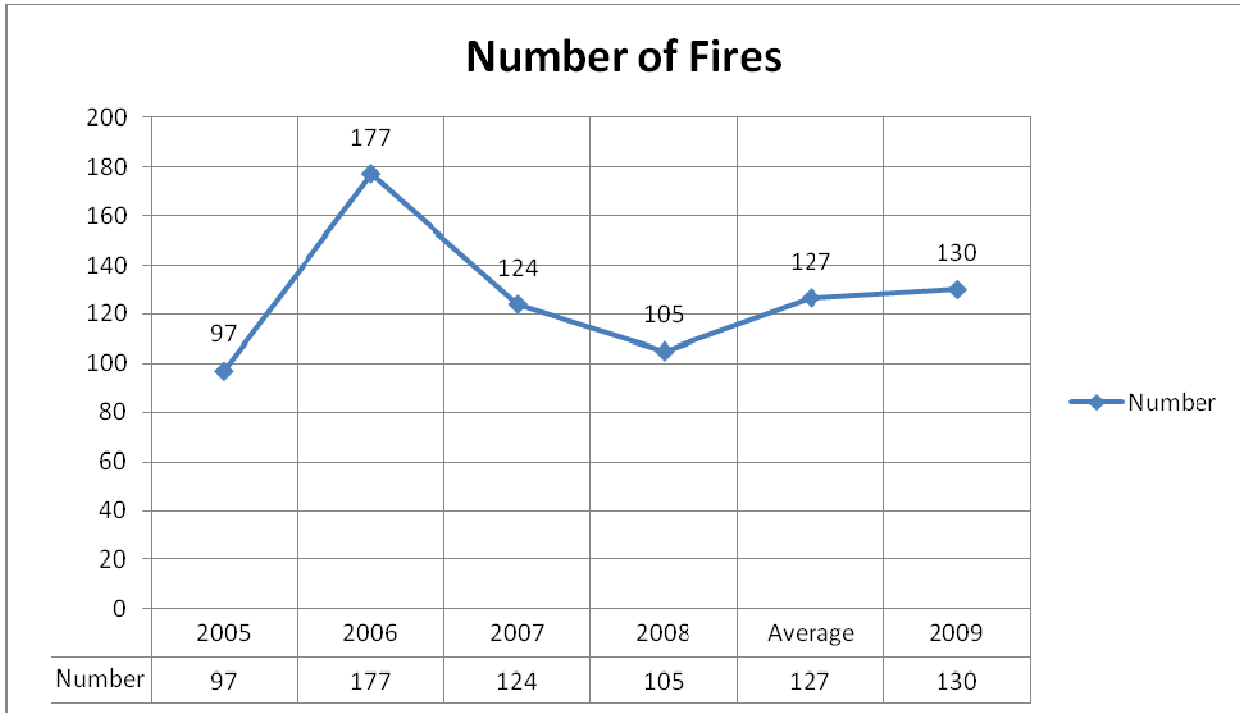
2009 Incident Action Summary

Cody Dispatch Smoke Reports



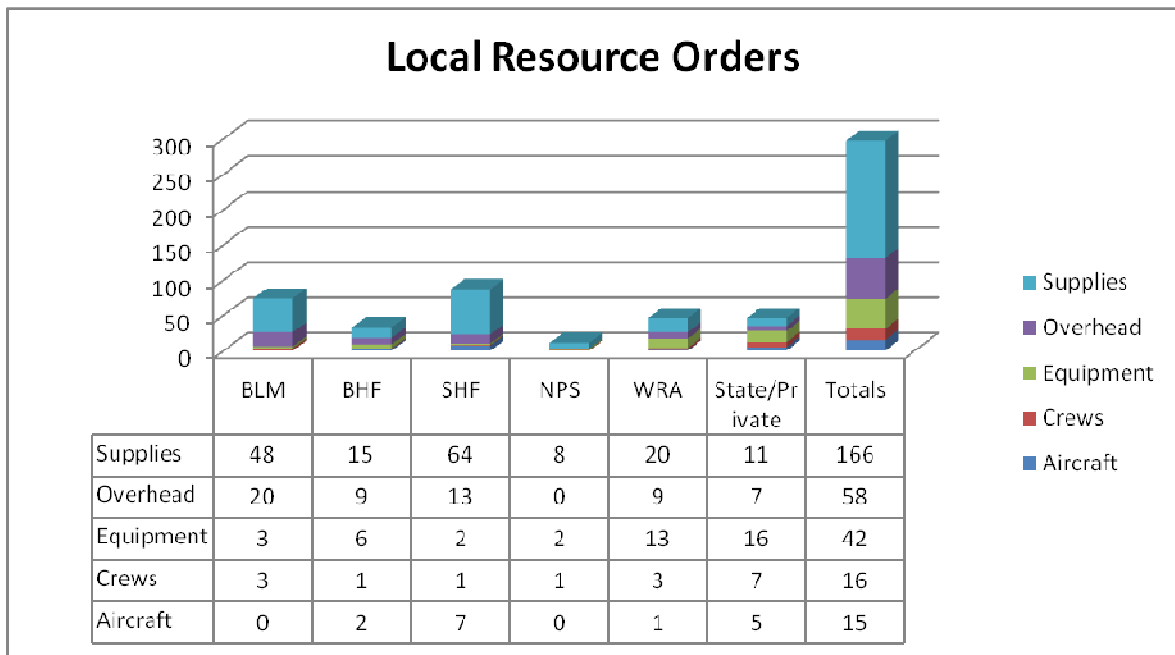
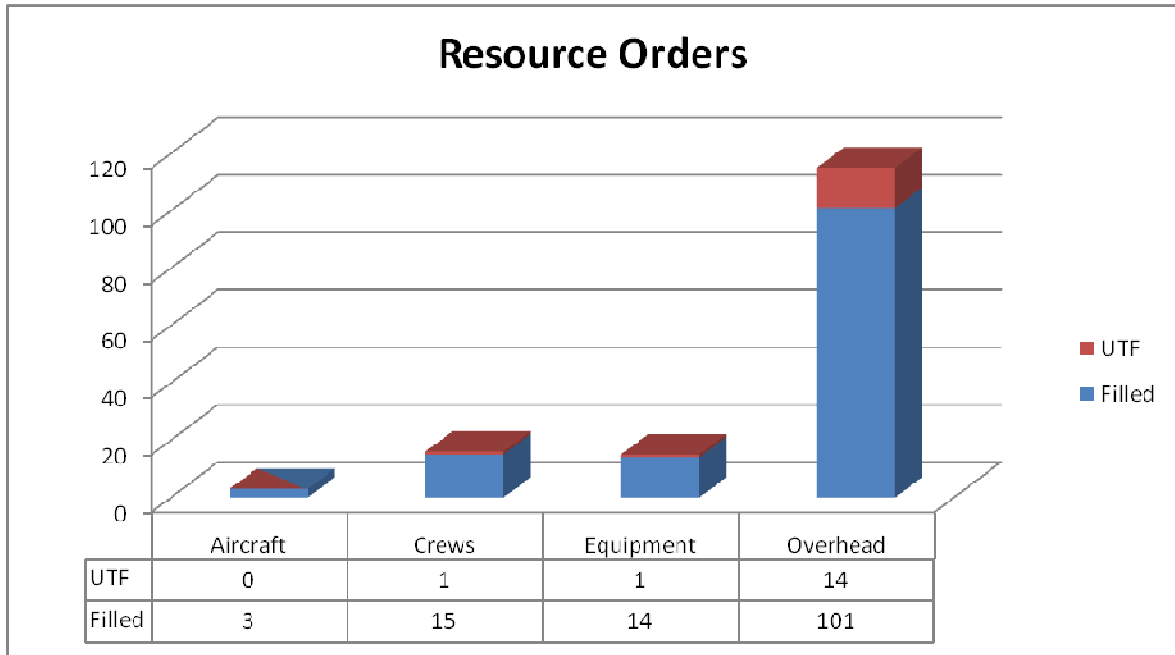
Castle fire

5 - Year Averages: Fires and Acres

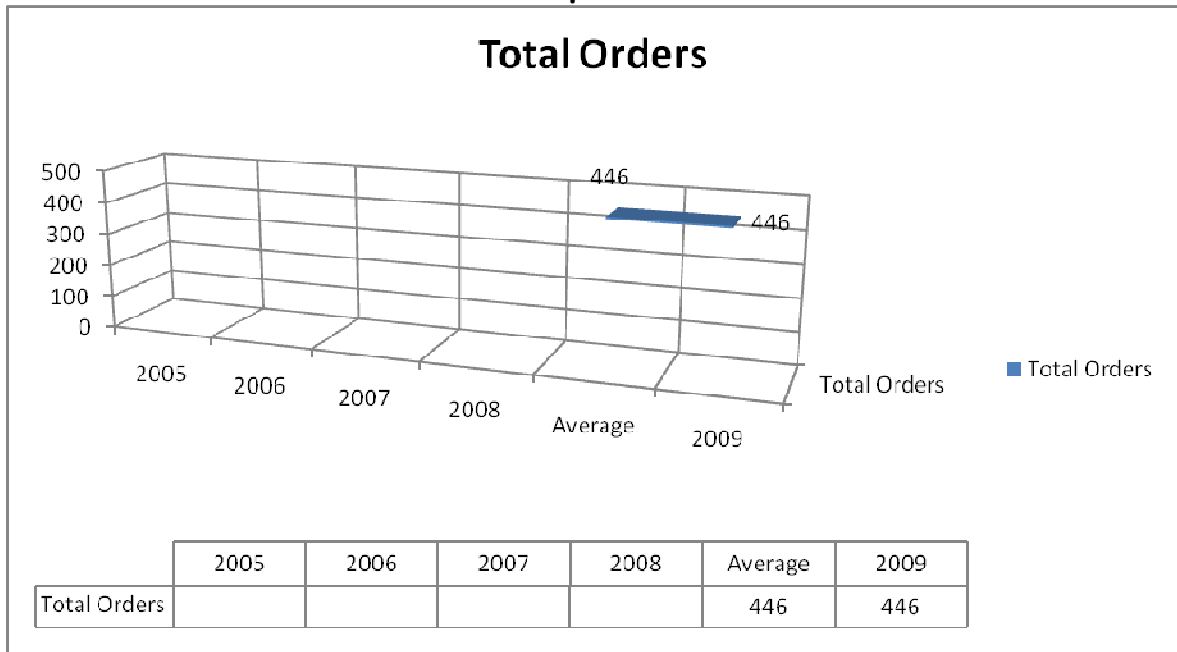


CDC Resource Order Statistics

2009 Resource Orders



Resource Order Requests Processed

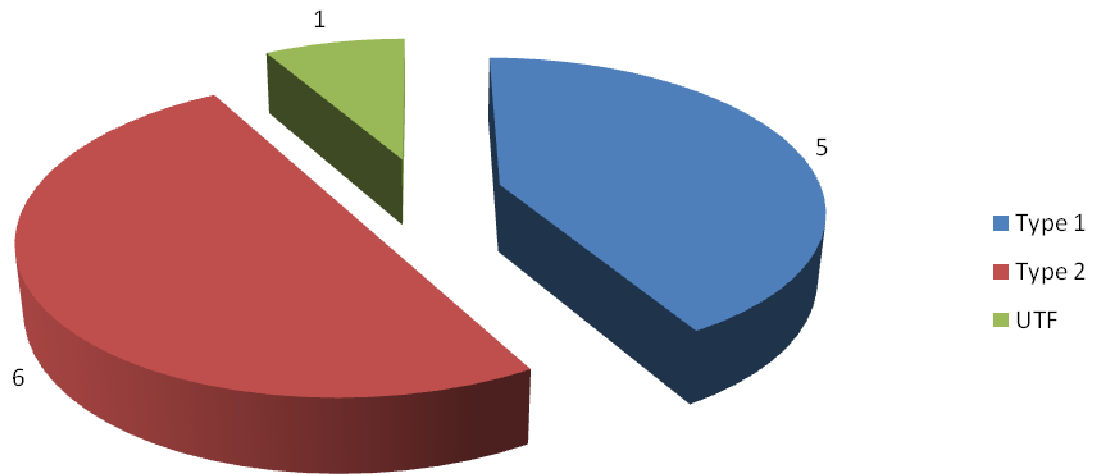


2009 Resource Order Statistics Workload By Unit (including UTF's and CX)

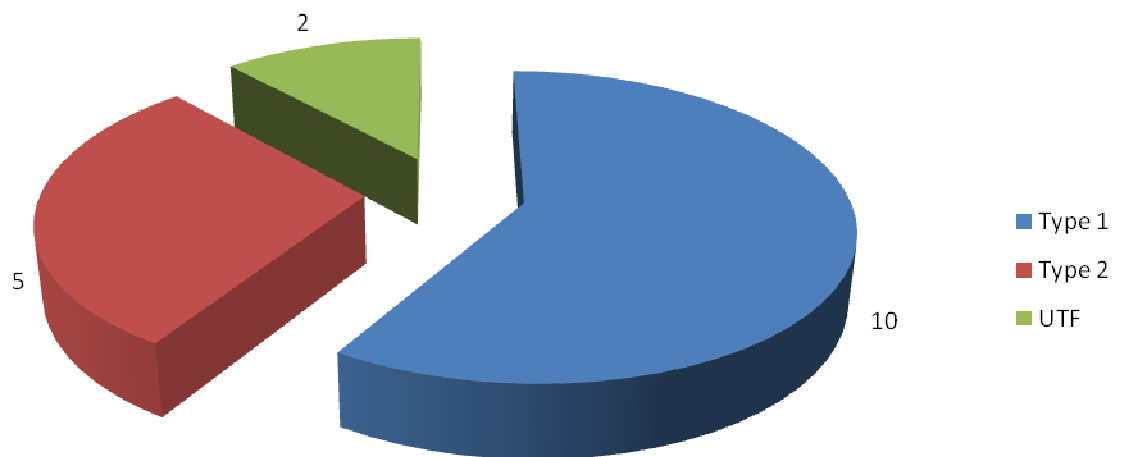
	Aircraft	Crews	Equipment	Overhead	Supplies
BLM	0	3	3	20	48
BHF	2	1	6	9	15
SHF	7	1	2	13	64
NPS	0	1	2	0	8
WRA	1	3	13	9	20
State/Private	5	7	16	7	11
Totals	15	16	42	58	166

Crew Summary

Crew Orders Placed by WY-CDC



Crew Orders Filled by WY-CDC



2009 Crew Usage

Crews assigned to CDC incidents	
Type 1	Type 2
5	6

Crews dispatched by CDC		
	In RMCC	Out of RMCC
T1	4	5
T2	2	3

2009 Aircraft Summary

4 T3 helicopters were used in the dispatch area for 5 fires.

ERROR: syntaxerror
OFFENDING COMMAND: token

STACK:

-filestream-
454536