

Thursday, July 25, 2024

OSC Large Fire Probability:







22%

There is an **elevated** risk for a large fire start. The *average* daily large fire start probability in July is 22%.

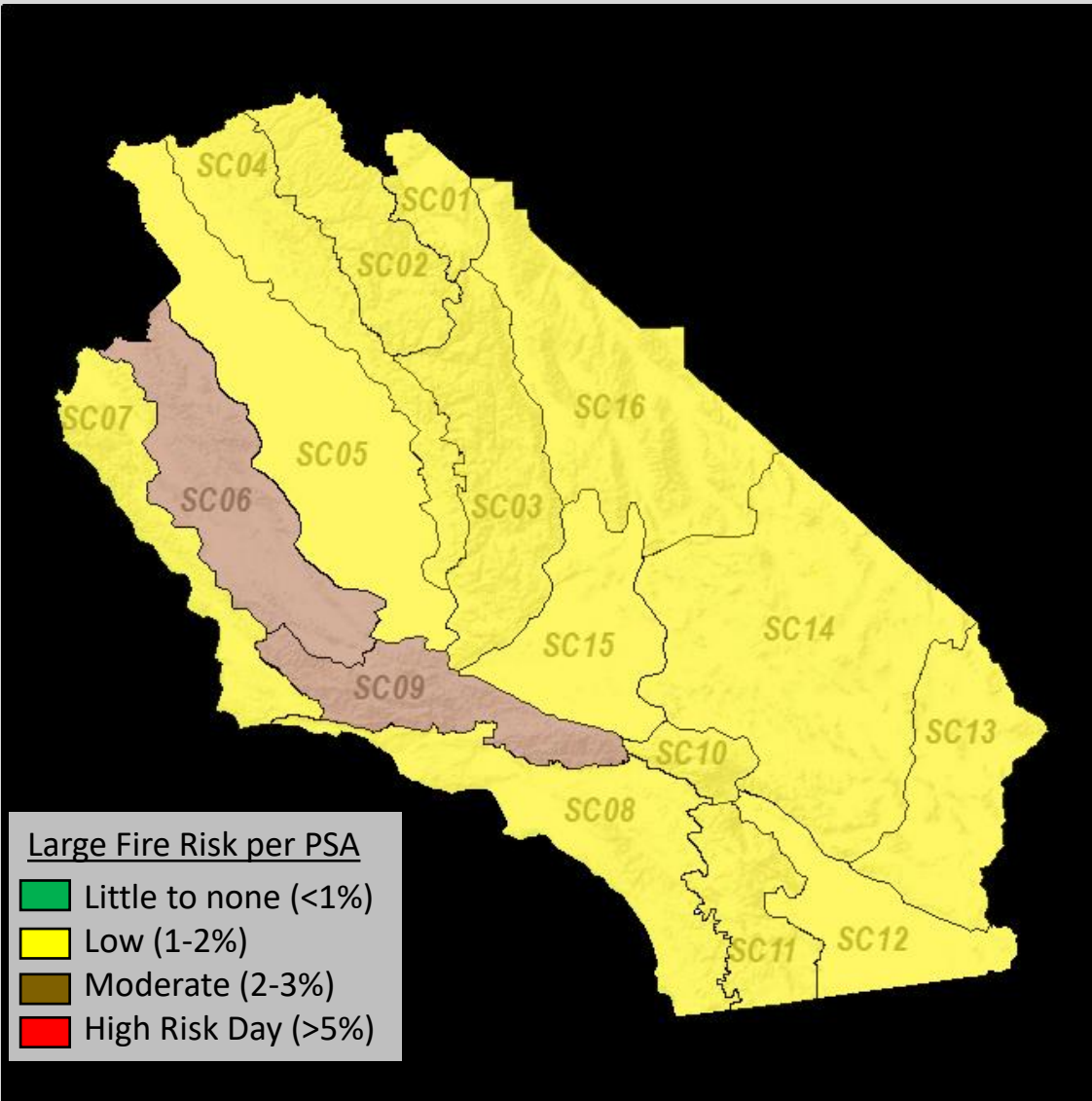
Large Fire Definitions

PSA	Large Fire Acres
E Sierra SC01	100
C Sierra SC02	50
S Sierra SC03	250
Sierra Foothills SC04	300
C Valley SC05	500
C Coast Interior SC06	500
C Coast SC07	250
S Coast SC08	250
W Mountains SC09	150
E Mountains SC10	50
S Mountains SC11	300
Lower Deserts SC12	50
E Deserts SC13	50
C Mojave SC14	300
Upper Deserts SC15	250
N Deserts SC16	250

OSC Large Fire Probability Scale

	Little/none (0-4%)
	Low (5-10%)
	Moderate (11-20%)
	Elevated (21-30%)
	High (31-40%)
	Extreme (>40%)

<https://gacc.nifc.gov/oscc/predictive/weather/>



Friday, July 26, 2024

OSC Large Fire Probability:

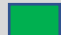
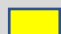


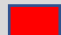
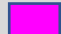
22%

There is an **elevated** risk for a large fire start. The *average* daily large fire start probability in July is 22%.

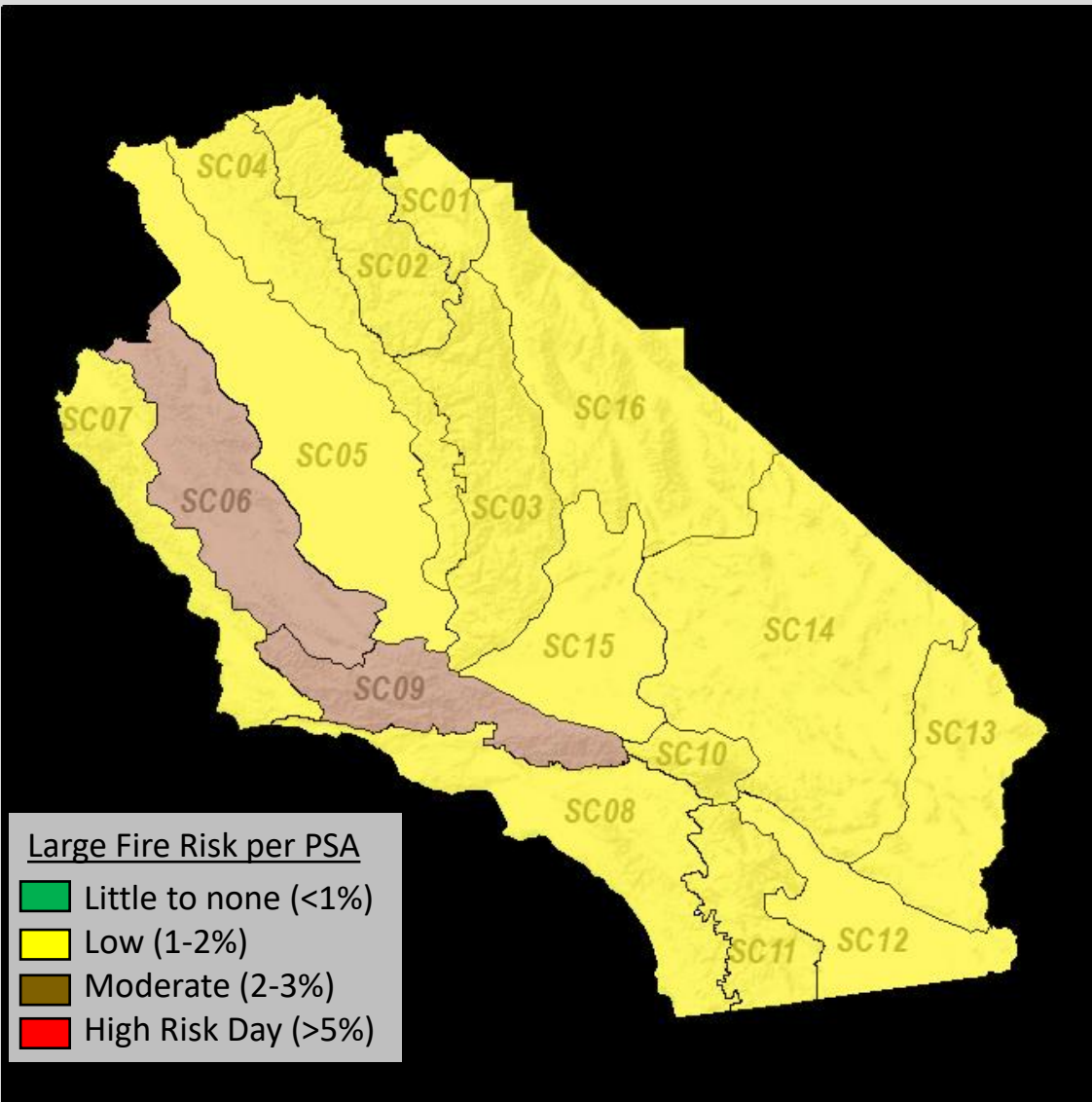
Large Fire Definitions

PSA	Large Fire Acres
E Sierra SC01	100
C Sierra SC02	50
S Sierra SC03	250
Sierra Foothills SC04	300
C Valley SC05	500
C Coast Interior SC06	500
C Coast SC07	250
S Coast SC08	250
W Mountains SC09	150
E Mountains SC10	50
S Mountains SC11	300
Lower Deserts SC12	50
E Deserts SC13	50
C Mojave SC14	300
Upper Deserts SC15	250
N Deserts SC16	250

OSC Large Fire Probability Scale

	Little/none (0-4%)
	Low (5-10%)
	Moderate (11-20%)
	Elevated (21-30%)
	High (31-40%)
	Extreme (>40%)

<https://gacc.nifc.gov/oscc/predictive/weather/>



Saturday, July 27, 2024

OSC Large Fire Probability:





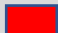
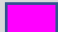
22%

There is an **elevated** risk for a large fire start. The *average* daily large fire start probability in July is 22%.

Large Fire Definitions

PSA	Large Fire Acres
E Sierra SC01	100
C Sierra SC02	50
S Sierra SC03	250
Sierra Foothills SC04	300
C Valley SC05	500
C Coast Interior SC06	500
C Coast SC07	250
S Coast SC08	250
W Mountains SC09	150
E Mountains SC10	50
S Mountains SC11	300
Lower Deserts SC12	50
E Deserts SC13	50
C Mojave SC14	300
Upper Deserts SC15	250
N Deserts SC16	250

OSC Large Fire Probability Scale

	Little/none (0-4%)
	Low (5-10%)
	Moderate (11-20%)
	Elevated (21-30%)
	High (31-40%)
	Extreme (>40%)

<https://gacc.nifc.gov/oscc/predictive/weather/>

