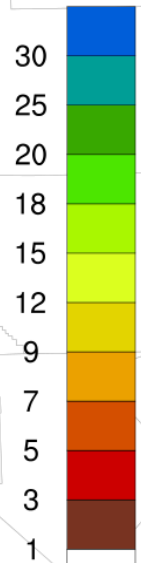
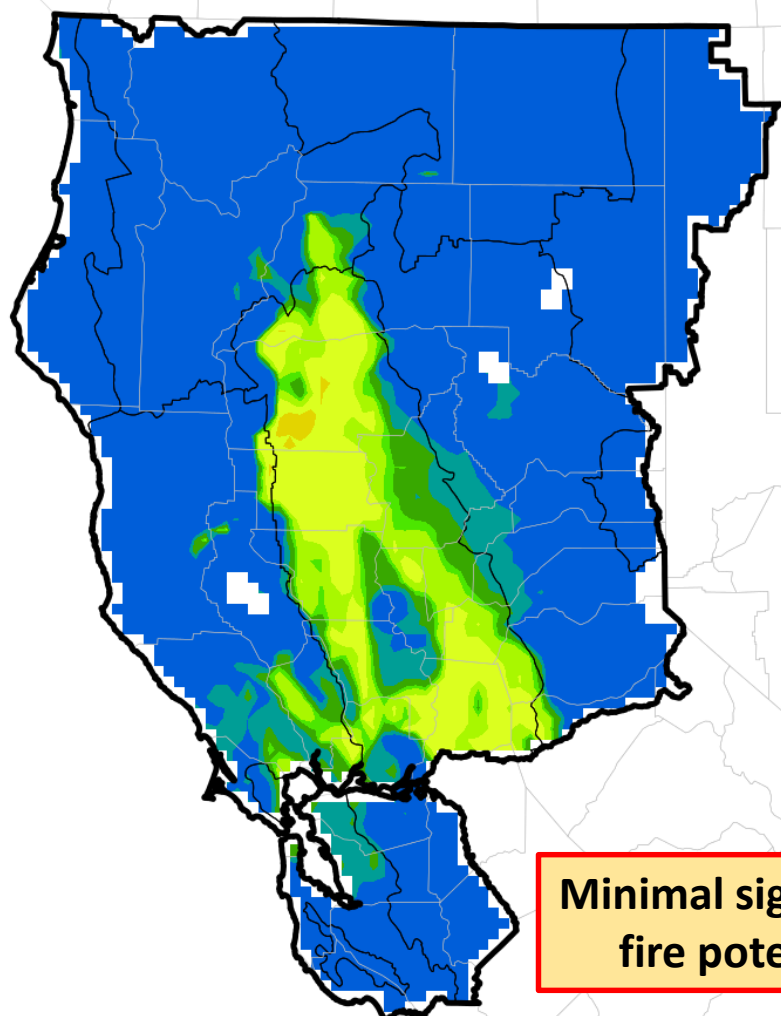




Northern California Fire Potential – Day 1

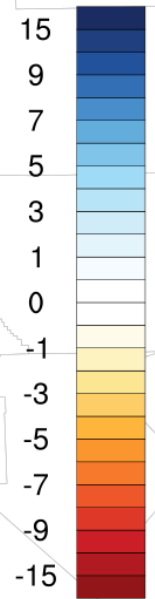
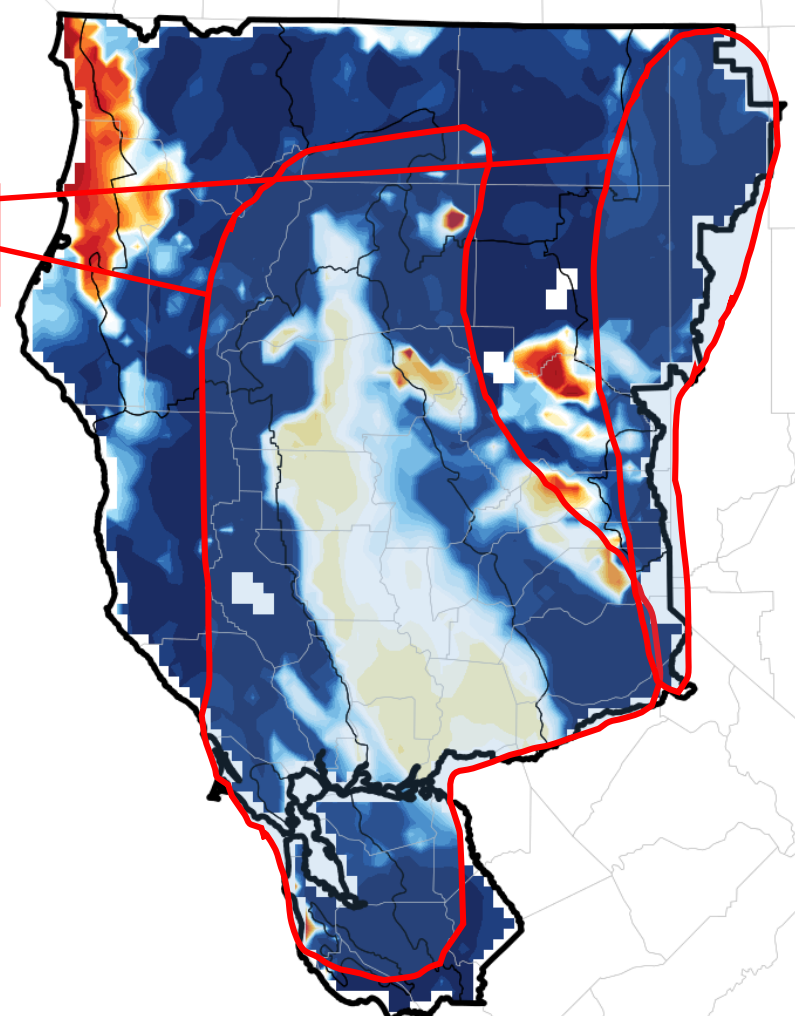
Issued: Thursday February 21, 2019
Valid for: Thursday February 21, 2019



Minimal significant fire potential

1300 LST FM10 Hour (%)

N-NE-E gusts 30-40 mph



FM10 Hour change (%) from yesterday

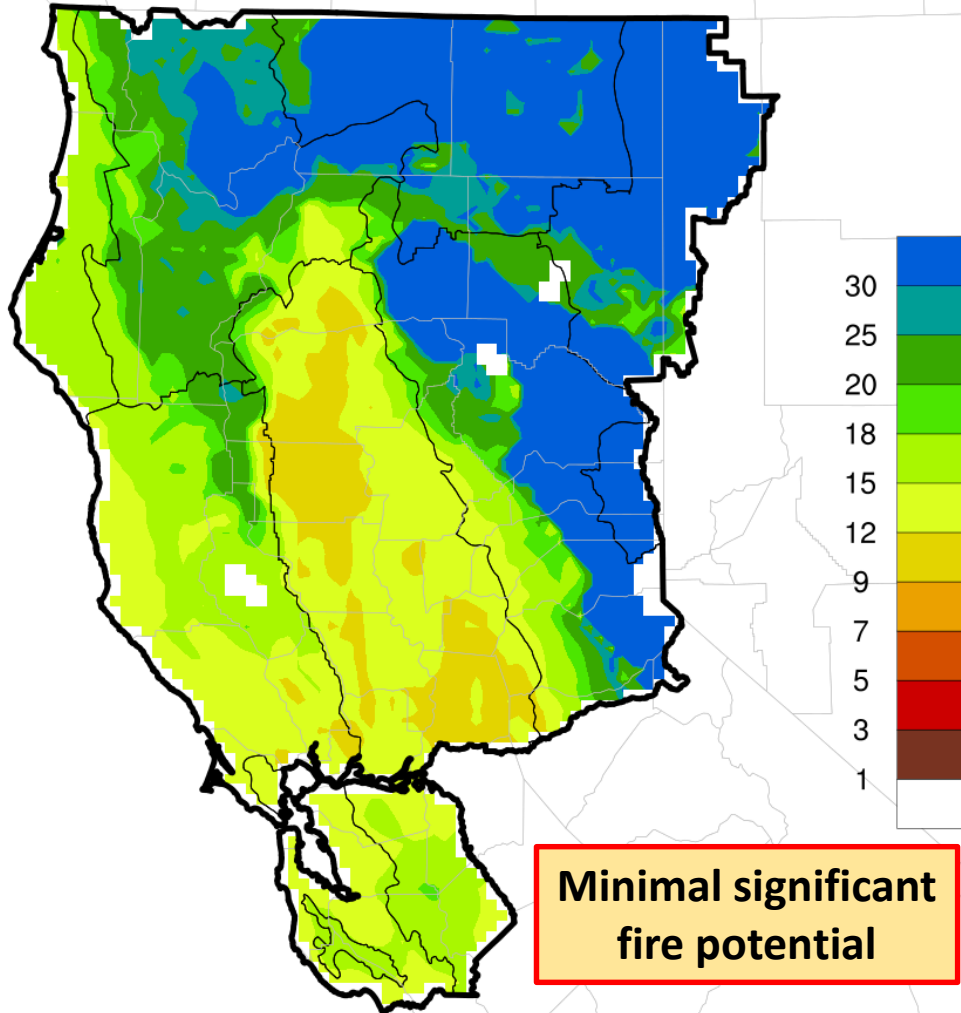
This product is experimental and may undergo future format changes.



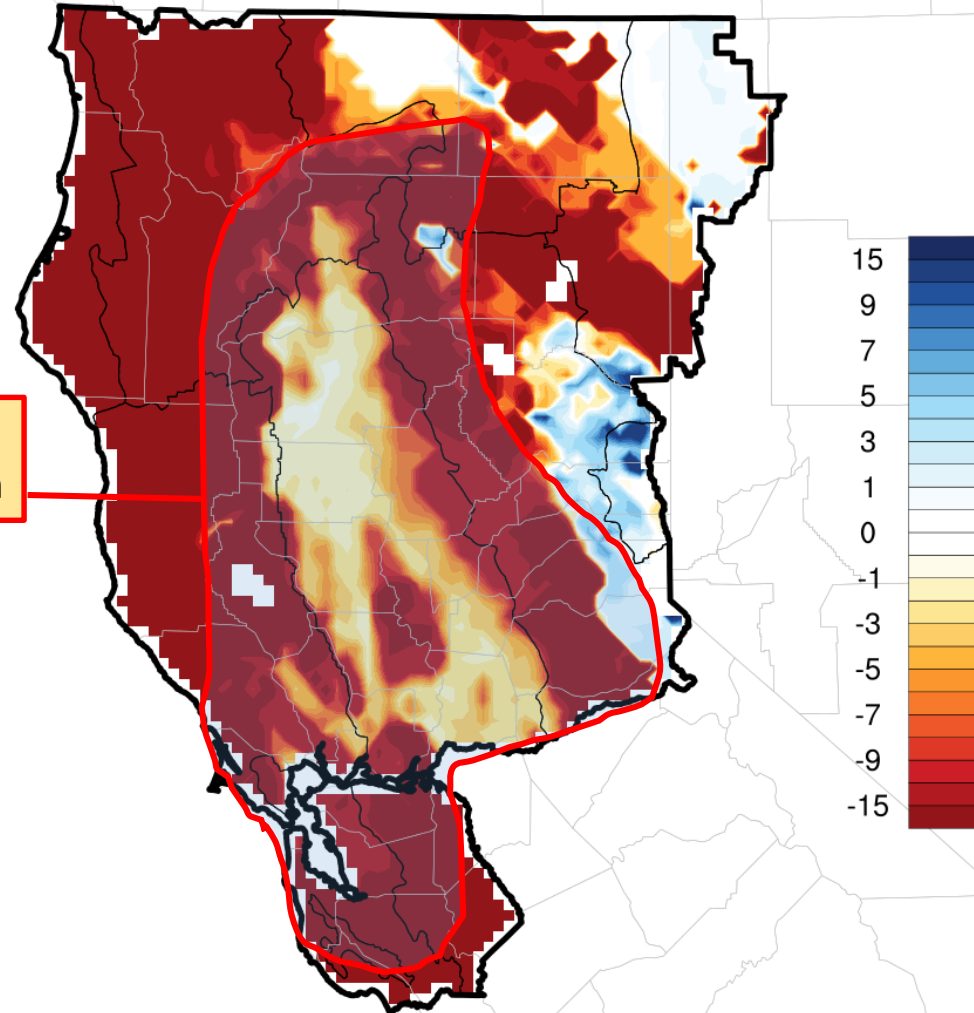
Northern California Fire Potential – Day 2

Issued: Thursday February 21, 2019

Valid for: Friday February 22, 2019



1300 LST FM10 Hour (%)



FM10 Hour change (%) from previous day