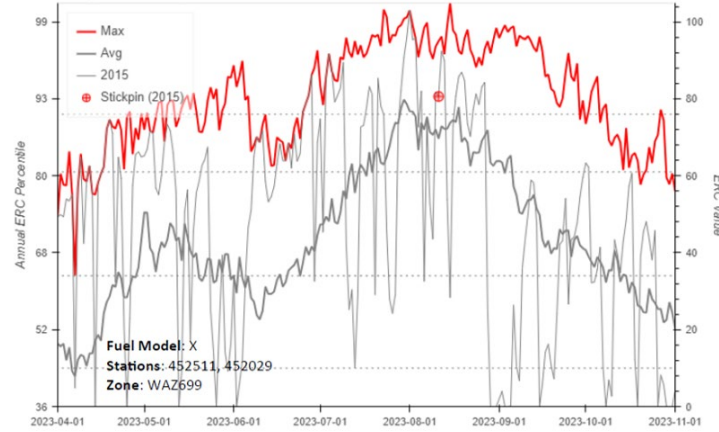


**Fire Danger Interpretation:**  
 Energy Release Component (ERC) Breakpoint – thresholds dividing ERC into 5 levels of Preparedness based on fire business.  
 Max – Highest ERC by day, 2000-2019  
 Avg – Average ERC by day, 2000-2019  
 2015 – A Year to Remember  
**Remember What Fire Danger Tells You:**  
 Energy Release Component gives seasonal trends calculated from 2 pm temperature, humidity, daily temperature and RH ranges, and precip duration.  
 Wind is not part of ERC calculation  
 Watch local conditions and variations across the landscape – Fuel, Weather, Topography  
 Listen to weather forecasts, especially WIND  
**Local Thresholds – Watch Out**  
 Combinations of any of these factors can greatly increase fire behavior:  
 20 ft. Windspeed over 6 mph  
 RH less than 16%  
 Temperature over 89  
**Past Experience**  
 Many fires in NE Washington exhibit significant fire growth following poor humidity recovery (<40%) and dry cold front passage.

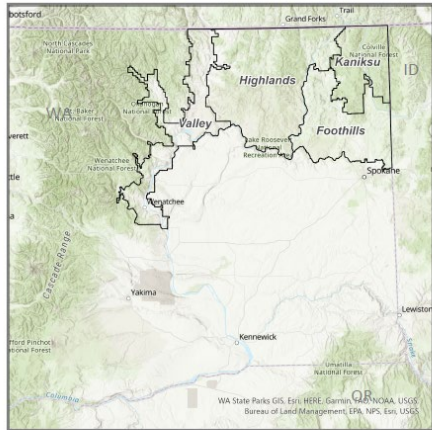
**NE WA  
 Interagency  
 Communications  
 Center**  
 Scan For Current  
 NFDRS Values →



**Energy Release Component** Highlands Fire Danger Rating Area (Fuel Model X, 2000-2019)



**Highlands:** The east and west slopes of the Kettle Mountain Range covering Ferry County, northern Stevens, and eastern Okanogan County.

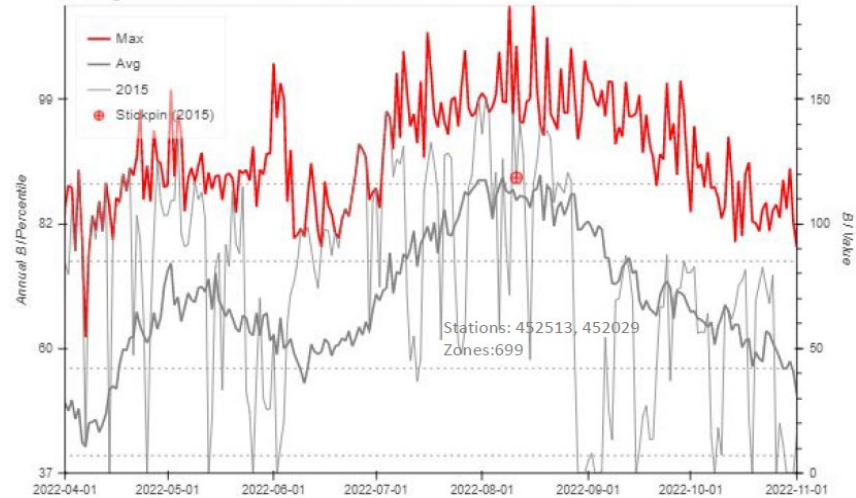


**Fire Danger Interpretation:**  
 Burning Index (BI) Breakpoint – thresholds dividing BI into 5 levels of staffing based on fire business.  
 Max – Highest BI by day, 2006-2020  
 Avg – Average BI by day, 2006-2020  
 2015 – A Year to Remember  
**Remember What Fire Danger Tells You:**  
 Burning Index gives day to day fluctuations calculated from 2 pm temperature, humidity, wind, daily temperature and RH ranges, and precip duration.  
 Wind is part of BI calculation  
 Watch local conditions and variations across the landscape – Fuel, Weather, Topography  
 Listen to weather forecasts, especially WIND  
**Local Thresholds – Watch Out**  
 Combinations of any of these factors can greatly increase fire behavior:  
 20 ft. Windspeed over 6 mph  
 RH less than 16%  
 Temperature over 89  
**Past Experience**  
 Many fires in NE Washington exhibit significant fire growth following poor humidity recovery (<40%) and dry cold front passage.

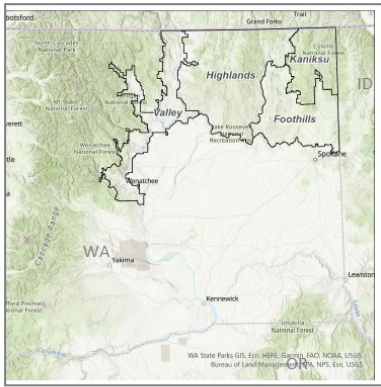
**Northeast Washington Interagency  
 Communications Center**

Current seasonal and daily National Fire Danger Rating data can be found by navigating to <http://pnwildfireplanning.pythonanywhere.com/nfdrs/r6map/>

**Burning Index** Highlands Fire Danger Rating Area (Fuel Model X, 2000-2019)



**Highlands:** The east and west slopes of the Kettle Mountain Range covering Ferry County, northern Stevens, and eastern Okanogan County.



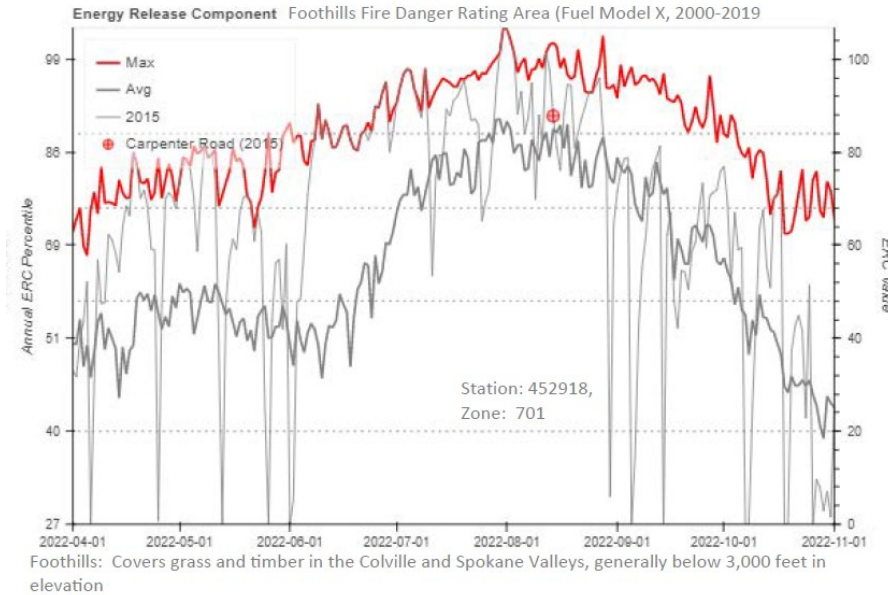
**Fire Danger Interpretation:**  
 Energy Release Component (ERC) Breakpoint – thresholds dividing ERC into 5 levels of Preparedness based on fire business.  
 Max – Highest ERC by day, 2000-2019  
 Avg – Average ERC by day, 2000-2019  
 2015 – A Year to Remember

**Remember What Fire Danger Tells You:**  
 Energy Release Component gives seasonal trends calculated from 2 pm temperature, humidity, daily temperature and RH ranges, and precip duration.  
 Wind is not part of ERC calculation  
 Watch local conditions and variations across the landscape – Fuel, Weather, Topography  
 Listen to weather forecasts, especially WIND

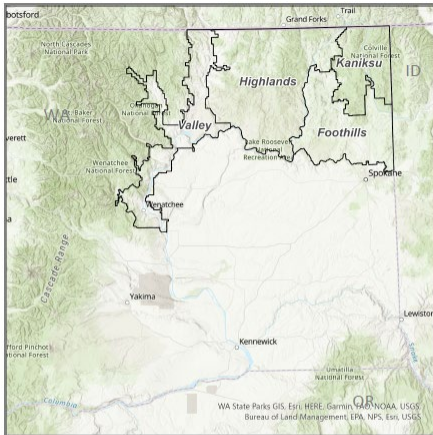
**Local Thresholds – Watch Out**  
 Combinations of any of these factors can greatly increase fire behavior:  
 20 ft. Windspeed over 6 mph  
 RH less than 16%  
 Temperature over 89

**Past Experience**  
 Many fires in NE Washington exhibit significant fire growth following poor humidity recovery (<40%) and dry cold front passage.

**NE WA Interagency Communications Center**  
 Scan For Current NFDRS Values →



Foothills: Covers grass and timber in the Colville and Spokane Valleys, generally below 3,000 feet in elevation



**Fire Danger Interpretation:**  
 Burning Index (BI) Breakpoint – thresholds dividing BI into 5 levels of staffing based on fire business.  
 Max – Highest BI by day, 2006-2020  
 Avg – Average BI by day, 2006-2020  
 2015 – A Year to Remember

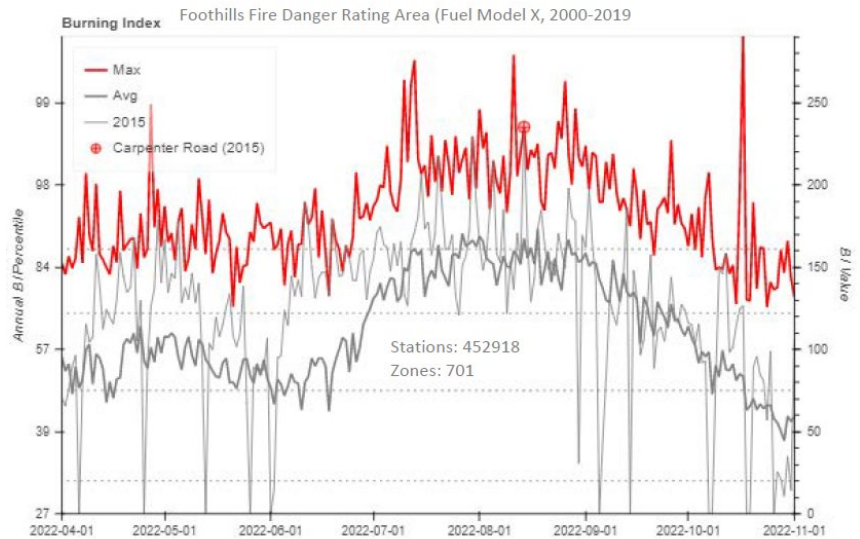
**Remember What Fire Danger Tells You:**  
 Burning Index gives day to day fluctuations calculated from 2 pm temperature, humidity, wind, daily temperature and RH ranges, and precip duration.  
 Wind is part of BI calculation  
 Watch local conditions and variations across the landscape – Fuel, Weather, Topography  
 Listen to weather forecasts, especially WIND

**Local Thresholds – Watch Out**  
 Combinations of any of these factors can greatly increase fire behavior:  
 20 ft. Windspeed over 6 mph  
 RH less than 16%  
 Temperature over 89

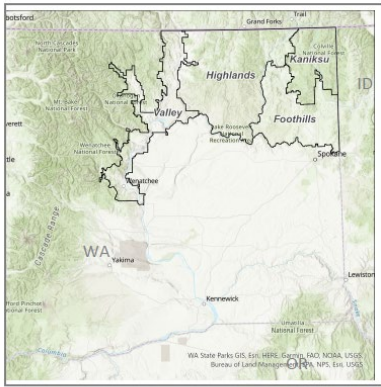
**Past Experience**  
 Many fires in NE Washington exhibit significant fire growth following poor humidity recovery (<40%) and dry cold front passage.

**Northeast Washington Interagency Communications Center**

Current seasonal and daily National Fire Danger Rating data can be found by navigating to <http://pnwildfireplanning.pythonanywhere.com/nfdrs/r6map/>



Foothills: Covers grass and timber in the Colville and Spokane Valleys, generally below 3,000 feet in elevation.



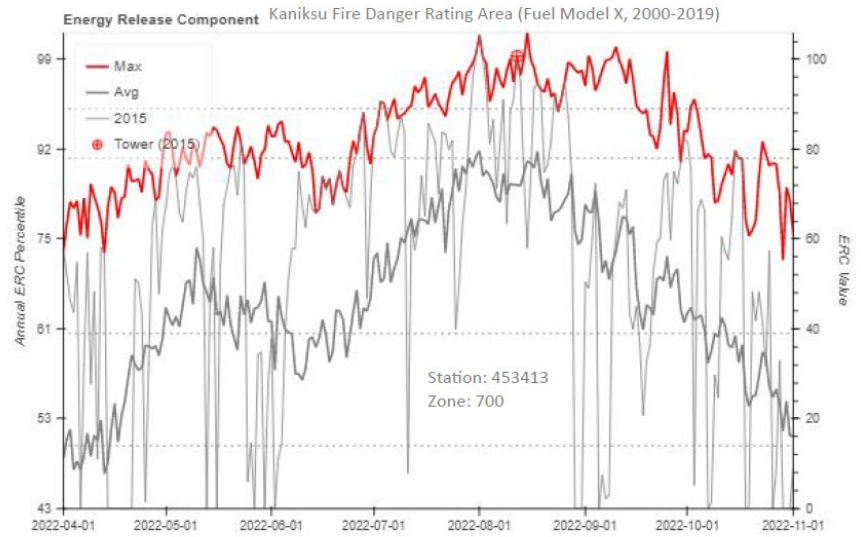
**Fire Danger Interpretation:**  
 Energy Release Component (ERC) Breakpoint – thresholds dividing ERC into 5 levels of Preparedness based on fire business.  
 Max – Highest ERC by day, 2000-2019  
 Avg – Average ERC by day, 2000-2019  
 2015 – A Year to Remember

**Remember What Fire Danger Tells You:**  
 Energy Release Component gives seasonal trends calculated from 2 pm temperature, humidity, daily temperature and RH ranges, and precip duration.  
 Wind is not part of ERC calculation  
 Watch local conditions and variations across the landscape – Fuel, Weather, Topography  
 Listen to weather forecasts, especially WIND

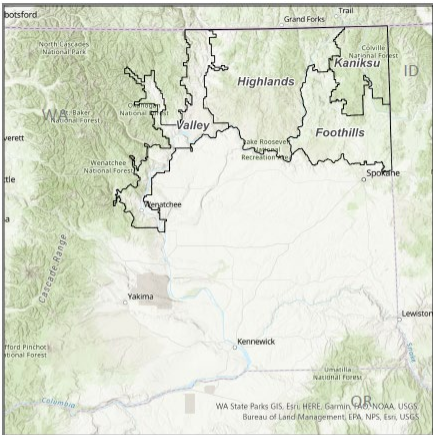
**Local Thresholds – Watch Out**  
 Combinations of any of these factors can greatly increase fire behavior:  
 20 ft. Windspeed over 6 mph  
 RH less than 16%  
 Temperature over 89

**Past Experience**  
 Many fires in NE Washington exhibit significant fire growth following poor humidity recovery (<40%) and dry cold front passage.

**NE WA  
 Interagency  
 Communications  
 Center**  
 Scan For Current  
 NFDRS Values →



Kaniksu: Timbered stands in Stevens and Pend Orielle counties, generally above 3,000 feet in elevation.



**Fire Danger Interpretation:**  
 Burning Index (BI) Breakpoint – thresholds dividing BI into 5 levels of staffing based on fire business.  
 Max – Highest BI by day, 2006-2020  
 Avg – Average BI by day, 2006-2020  
 2015 – A Year to Remember

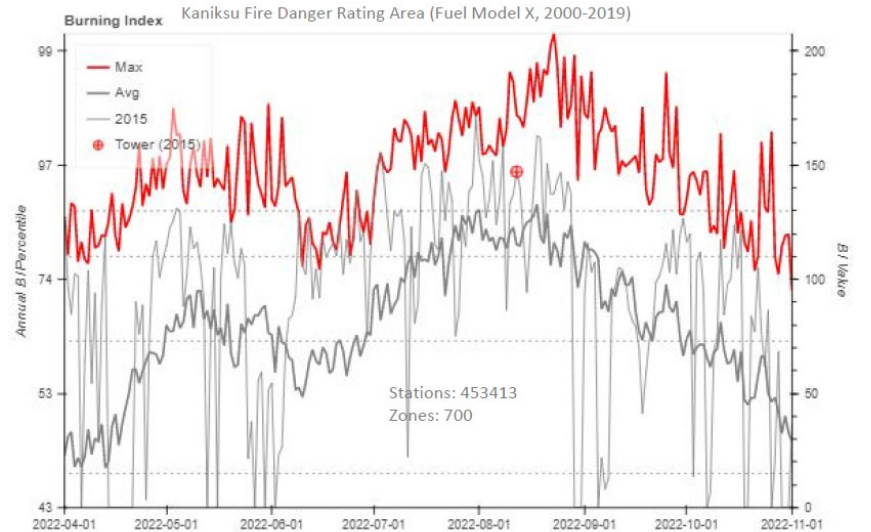
**Remember What Fire Danger Tells You:**  
 Burning Index gives day to day fluctuations calculated from 2 pm temperature, humidity, wind, daily temperature and RH ranges, and precip duration.  
 Wind is part of BI calculation  
 Watch local conditions and variations across the landscape – Fuel, Weather, Topography  
 Listen to weather forecasts, especially WIND

**Local Thresholds – Watch Out**  
 Combinations of any of these factors can greatly increase fire behavior:  
 20 ft. Windspeed over 6 mph  
 RH less than 16%  
 Temperature over 89

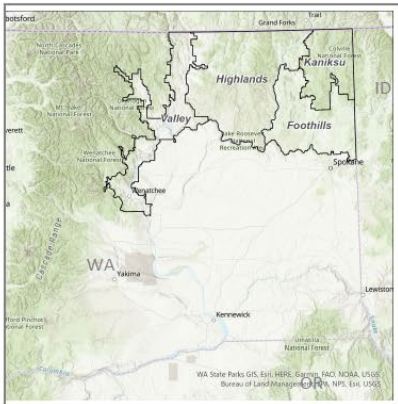
**Past Experience**  
 Many fires in NE Washington exhibit significant fire growth following poor humidity recovery (<40%) and dry cold front passage.

**Northeast Washington Interagency  
 Communications Center**

Current seasonal and daily National Fire Danger Rating data can be found by navigating to <http://pnwildfireplanning.pythonanywhere.com/nfdrs/r6map/>



Kaniksu: Timbered stands in Stevens and Pend Orielle counties, generally above 3,000 feet in elevation.

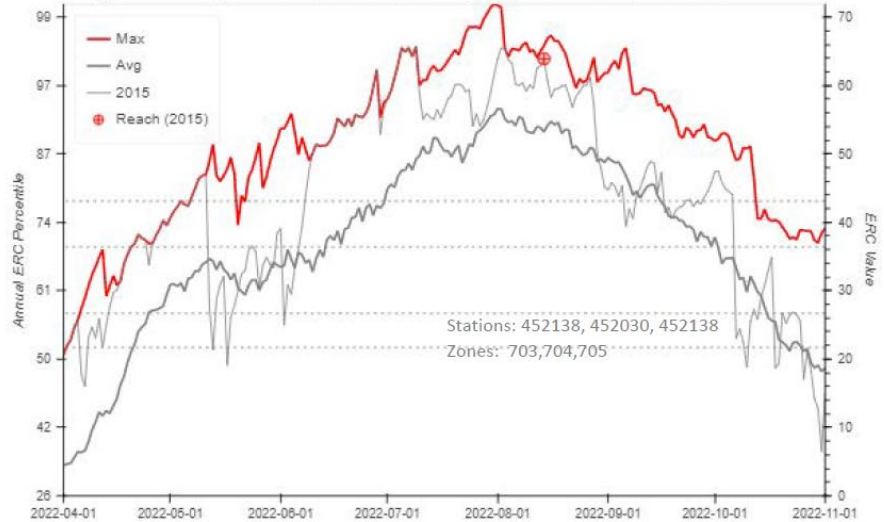


**NE WA  
Interagency  
Communications  
Center**  
Scan For Current  
NFDRS Values →

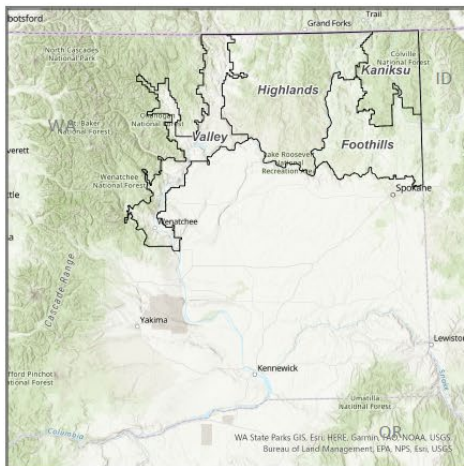


**Fire Danger Interpretation:**  
Energy Release Component (ERC) Breakpoint – thresholds dividing ERC into 5 levels of Preparedness based on fire business.  
Max – Highest ERC by day, 2000-2019  
Avg – Average ERC by day, 2000-2019  
2015 – A Year to Remember  
**Remember What Fire Danger Tells You:**  
Energy Release Component gives seasonal trends calculated from 2 pm temperature, humidity, daily temperature and RH ranges, and precip duration.  
Wind is not part of ERC calculation  
Watch local conditions and variations across the landscape – Fuel, Weather, Topography  
Listen to weather forecasts, especially WIND  
**Local Thresholds – Watch Out**  
Combinations of any of these factors can greatly increase fire behavior:  
20 ft. Windspeed over 6 mph  
RH less than 16%  
Temperature over 89  
**Past Experience**  
Many fires in NE Washington exhibit significant fire growth following poor humidity recovery (<40%) and dry cold front passage.

**Energy Release Component Valley Fire Danger Rating Area (Fuel Model X, 2000-2019)**



Valley: Columbia and Okanogan valley brush and grass in Chelan and Okanogan Counties.

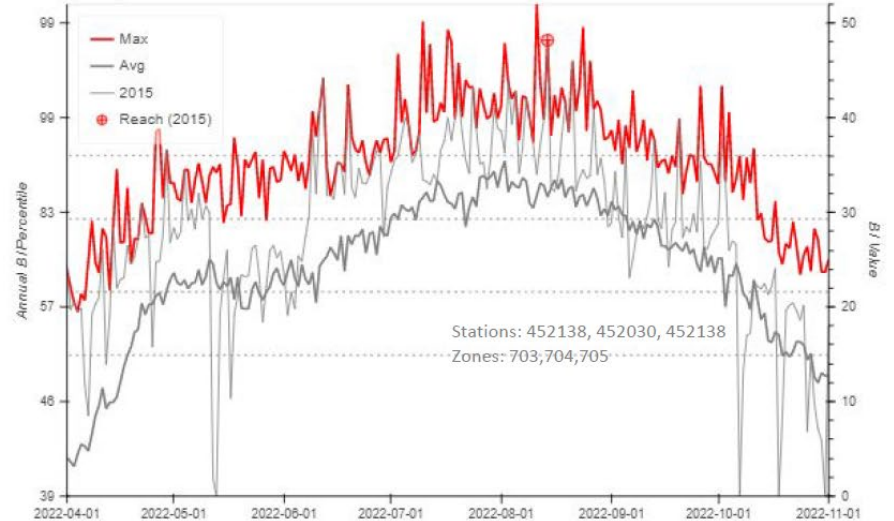


**Northeast Washington Interagency  
Communications  
Center**

Current seasonal and daily National Fire Danger Rating data can be found by navigating to <http://pnwildfireplanning.pythonanywhere.com/nfdrs/r6map/>

**Fire Danger Interpretation:**  
Burning Index (BI) Breakpoint – thresholds dividing BI into 5 levels of staffing based on fire business.  
Max – Highest BI by day, 2006-2020  
Avg – Average BI by day, 2006-2020  
2015 – A Year to Remember  
**Remember What Fire Danger Tells You:**  
Burning Index gives day to day fluctuations calculated from 2 pm temperature, humidity, wind, daily temperature and RH ranges, and precip duration.  
Wind is part of BI calculation  
Watch local conditions and variations across the landscape – Fuel, Weather, Topography  
Listen to weather forecasts, especially WIND  
**Local Thresholds – Watch Out**  
Combinations of any of these factors can greatly increase fire behavior:  
20 ft. Windspeed over 6 mph  
RH less than 16%  
Temperature over 89  
**Past Experience**  
Many fires in NE Washington exhibit significant fire growth following poor humidity recovery (<40%) and dry cold front passage.

**Burning Index Valley Fire Danger Rating Area (Fuel Model X, 2000-2019)**



Valley: Columbia and Okanogan valley brush and grass in Chelan and Okanogan Counties.