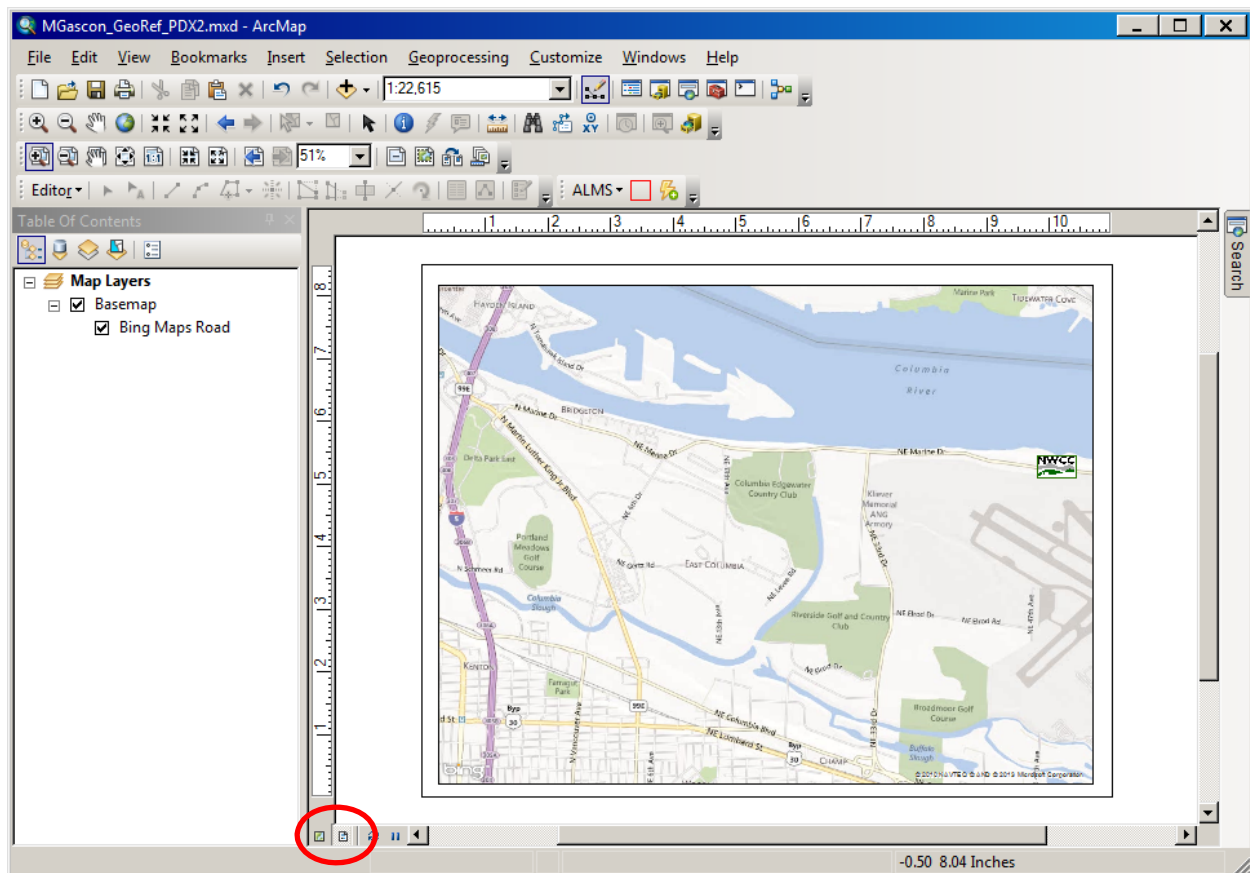


Creating a Georeferenced PDF in ArcMap

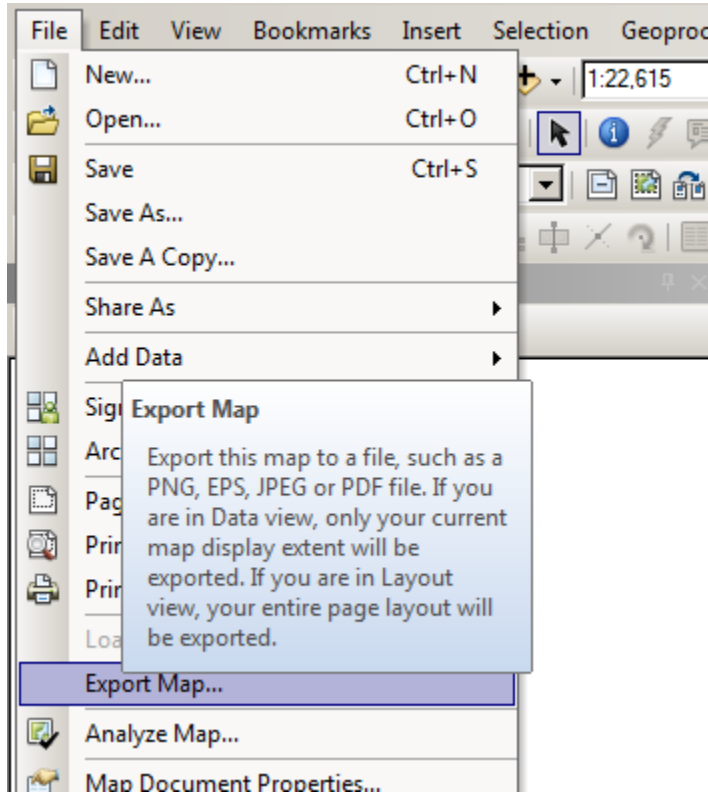
PDF map georeference

Adobe Acrobat and Adobe Reader versions 9 and later allow viewing of map coordinates and georeference information encoded inside the PDF file. Exporting a map with the **Export Map Georeference Information** option enabled will record each data frame's georeference information inside the PDF. When the georeferenced PDF is opened in a compatible viewer, such as Adobe Reader 9, the user can access geospatial functions such as coordinate readout and finding x,y.

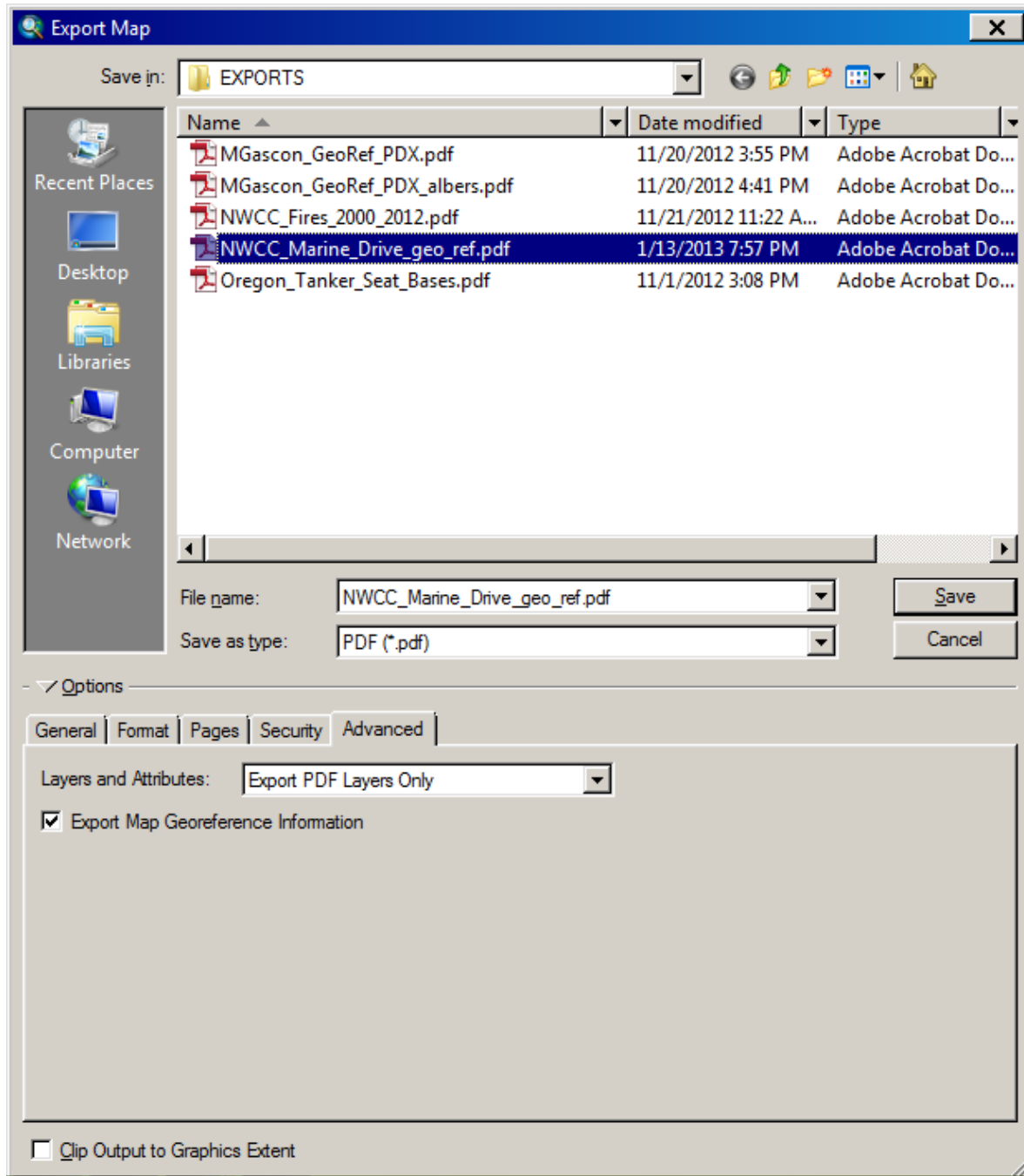


For the most PDF functionality and features, export your map while in the Layout view as circled above.

Creating a georeferenced pdf is very simple. Once the map is finished, just select “File – Export Map...” as shown below.



Go to the “Advanced” tab and check on “Export Map Georeference Information”. That’s it! There is more information below about viewing and using the exported map in the “Note” section below.



Note:

The geospatial functionality available to Adobe Acrobat and Adobe Reader users depends on which Acrobat 9 product they are using. When a PDF exported from ArcMap is used directly in the free Adobe Reader 9 product, tools for “Coordinate readout” and “Find x,y” will be available. If that same PDF is opened in any of the pay-for Acrobat products, an extended geospatial toolset is provided, including coordinate readout, find x,y, geodesic measurement, and georeferenced markup. This same extended toolset can be accessed in the free Adobe Reader if the PDF has first been resaved in Adobe Acrobat 9 Pro or Pro Extended using the Extend Features in Adobe Reader command in those programs. Enabling PDF for extended Adobe Reader features is only available in software from Adobe Systems, such as Adobe Acrobat Pro, and cannot be performed in ArcMap.

The georeference information saved inside the PDF file contains the following for each data frame on the page layout: corner coordinates of the data frame's boundary, both in latitude and longitude and in PDF page units (points), and a string describing the data frame's coordinate system as defined in the data frame properties coordinate system options. This information is saved into the internal stream of the PDF file for use by Adobe Reader or Adobe Acrobat, and the raw data is not user viewable. When a map is exported from data view instead of layout view, the PDF will contain a single map image along with its corresponding georeference information.

PDF files containing georeference information are still compatible with earlier (pre-Acrobat 9) versions of Adobe Acrobat and Adobe Reader. Files will open without problems, but the coordinate-related functions will not be available. Exporting to PDF with the Georeference option enabled does not negatively impact performance. Export takes the same amount of time with the option on or off. With these facts in mind, you may wish to keep the option enabled for all map exports. However, if you desire to not have the georeference information included in the PDF file, uncheck the Export Map Georeference Information check box to suppress export of georeference information.