

# 2013 IDAHO FIRE RESTRICTIONS PLAN



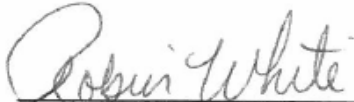
# IDAHO FIRE RESTRICTIONS PLAN

## SIGNATURE PAGE



STEVE ELLIS  
Idaho State Director, Bureau of Land Management

Date: 6/29/13



ROBIN WHITE  
Superintendent, Bureau of Indian Affairs  
Coeur D'Alene Agency

Date: JUN 17 2013

ACTING

DEAN FOX  
Superintendent, Bureau of Indian Affairs  
Fort Hall Agency

Date: \_\_\_\_\_



DAVID A. GROESCHL  
State Forester, Idaho Department of Lands

Date: 7/3/13



NORA RASURE  
Regional Forester, Intermountain Region - USFS

Date: 6/12/2013



GREG LAFRANCE  
Superintendent, Bureau of Indian Affairs  
Northern Idaho Agency

Date: 6/12/13

FAYE KRUEGER  
Regional Forester, Northern Rockies Region - USFS

Date: \_\_\_\_\_

# 2013 IDAHO FIRE RESTRICTIONS PLAN

## TABLE OF CONTENTS

<b>INTRODUCTION, PURPOSE, AND AUTHORITY</b>	<b>1</b>
<b>AREA DETERMINATION</b>	<b>1</b>
<b>PROCESS FOR FIRE RESTRICTIONS</b>	<b>2</b>
<b>INITIATION</b>	<b>2</b>
<b>IMPLEMENTATION</b>	<b>2</b>
<b>RESCISSION</b>	<b>3</b>
<b>PROCESS FOR CLOSURES</b>	<b>3</b>
<b>APPENDIX 1: AUTHORITIES</b>	<b>4</b>
<b>APPENDIX 2: ROLES AND RESPONSIBILITIES</b>	<b>5</b>
<b>APPENDIX 3: AREA BOUNDARIES IN NARRATIVE FORMAT</b>	<b>7</b>
<b>APPENDIX 4: GUIDELINES FOR IMPLEMENTING RESTRICTIONS</b>	<b>8</b>
<b>APPENDIX 5: STAGE I AND STAGE II RESTRICTIONS</b>	<b>9</b>
<b>APPENDIX 6: DEFINITIONS</b>	<b>12</b>
<b>APPENDIX 7: AREA FIRE RESTRICTIONS COORDINATORS</b>	<b>13</b>
<b>APPENDIX 8: MAP OF IDAHO FIRE RESTRICTIONS AREAS</b>	<b>14</b>
<b>APPENDIX 9: FIRE RESTRICTIONS AREA PLANS</b>	<b>15</b>
<b>BIG DESERT</b>	<b>15</b>
<b>CARIBOU HIGHLANDS</b>	<b>18</b>
<b>CENTENNIAL</b>	<b>21</b>
<b>CENTRAL IDAHO</b>	<b>24</b>
<b>CLEARWATER</b>	<b>27</b>
<b>OWYHEE MOUNTAINS</b>	<b>31</b>
<b>PANHANDLE</b>	<b>34</b>
<b>SOUTH CENTRAL</b>	<b>38</b>
<b>TREASURE VALLEY</b>	<b>42</b>
<b>WEST CENTRAL MOUNTAINS</b>	<b>46</b>
<b>WILDERNESS</b>	<b>50</b>
<b>APPENDIX 10: STAGE II EXEMPTIONS FOR PUBLIC UTILITIES AND RAILROADS</b>	<b>53</b>

## **Introduction**

The Idaho Fire Restrictions Plan is an interagency document that outlines interagency coordination efforts regarding fire restrictions and closures. An interagency approach for initiating restrictions or closures helps provide consistency among the land management partners, while defining the restriction boundaries so they are easily distinguishable to the public. Each restrictions area is encouraged to recruit any affected agency or landowner into restriction conversations whenever possible.

## **Purpose**

### **A. Restrictions**

The purpose of fire restrictions is to reduce the risk of human-caused fires during unusually high fire danger and/or burning conditions. Fire restrictions impose many limitations on the general public and private landowners and should be implemented only as a portion of an ambitious and successful prevention program. Alternative and preliminary measures include, but are not limited to, increasing the number of prevention signs, public contacts, and media campaigns. Fire restrictions should be considered only when very high or extreme fire danger is predicted to persist. Fire restrictions should be considered one of the last prevention tools to be used and should not be considered to be the prevention program.

### **B. Emergency Closures**

Emergency closures have an extreme impact on the public and fire agencies, and are discouraged except under the most severe conditions. Closures are not justified by fire danger alone, but should be driven by potential risk to life safety due to extreme fire behavior, high potential for human-caused fires, severe shortages of resources, and numerous large fires.

## **Authority**

Fire restrictions and closures can be implemented on state, federal, Tribal Trust, and private lands under applicable federal and state laws; See Authorities, Appendix 1. These laws grant the respective agencies the general authority to protect lands entrusted in their care by restricting use, or closing areas to entry for protection of life and safety of public. Agencies will consider suspending current burn permits, as well as not issuing new burn permits while restrictions are in place. Agency Administrators are responsible for coordinating with other agencies/tribes, issuing appropriate documentation and the enforcement of restrictions and closures for those lands on which they have authority; See Roles and Responsibilities, Appendix 2.

Although agencies are encouraged to coordinate and cooperate as much as possible, if Fire Managers/Agency Administrators/Tribal Chairpersons within an area determine it is necessary to go into restrictions, they may do so either as an entire area, or restrict only those areas meeting critical thresholds as defined in Guidelines for Implementing Fire Restrictions, Appendix 4. Agencies are responsible for incorporating the geographic guidelines into their appropriate policy and procedures manuals. Restrictions and closure procedures shall be uniform across restriction areas and the State.

## **Area Determination**

Idaho has been divided into eleven fire restriction areas, each of which represents a geographic location with similar timing for weather changes and fire behavior potentials. See Area Boundaries, Appendix 3. Boundaries for each area generally follow county boundaries, with a few

exceptions placed along rivers, highways, or jurisdictional boundaries that made more sense and are easily describable. When Fire Managers and Agency Administrators representing the jurisdictions within an area agree that the conditions warrant a restriction, the entire area will be placed in a restricted status. When Land Managers and Agency Administrators agree that the restrictions for that area can be removed, the entire area will rescind restrictions as a whole.

An Area Fire Restrictions Coordinator will be designated for each fire restriction area to facilitate discussion between the agencies. As a rule, all agencies should implement and rescind restrictions together, but agencies have latitude to initiate restrictions independently to address special situations or conditions on a case-by-case basis that do not affect the entire area. **This latitude should be used sparingly and only after consultation with the Area Fire Restrictions Coordinator.**

## **Process for Fire Restrictions**

Every spring, Agency Administrators, Fire Managers, law enforcement personnel, and public information personnel will review and validate the restriction and closure plan and applicable agency/tribal documents. All press releases, description of stages, and other necessary agency documents should be available in template format before the start of the fire season.

### **A. Initiation**

When the fire danger conditions within an area approach critical levels, Fire Managers within the restriction area should begin planning for the initiation of fire restrictions. Fire danger critical levels should be determined by all wildland agencies/tribes in the area before the onset of fire season. These guidelines will become part of the area's restriction plan, which will be incorporated into the Area Annual Operating Plan. The planning process for restrictions should include a public awareness campaign that will keep the media informed of the possibility of restrictions. The Area Fire Restrictions Coordinator, who is chosen by the Agency Administrator within the area, should coordinate all restriction actions (Appendix 2).

The Area Fire Restrictions Coordinator will initiate discussion with the area Fire Managers regarding the need to implement restrictions within the area; and once a decision is made to implement restrictions, the Area Fire Restrictions Coordinator will inform the Idaho Fire Restrictions Plan Coordinator. The Idaho Fire Restrictions Plan Coordinator will communicate the intention of an area to initiate restrictions and coordinate other area's restriction intentions. This decision process should be started early enough so all agencies/tribes in the area have time to plan, properly distribute the restriction documents, and notify the public.

When Fire Managers in the area make a decision that restrictions are needed, they will inform their respective Agency Administrator that the thresholds for implementing fire restrictions have been reached. All agencies and tribes will coordinate the restriction stages, implementation and rescissions, and timing of media releases.

### **B. Implementation**

The Area Fire Restrictions Coordinator will coordinate approval of all agency documents. Each Agency Administrator will be responsible for assuring that documents are completed and signed. The documents will be based on the elements listed in Stage I & Stage II Restrictions, Appendix 5.

The Area Fire Restrictions Coordinator will also coordinate public notification. Each area's restriction plan will include a media communications process. When implemented, the restriction media release must be clear, concise and understandable to the general public. Each agency/tribe

will post signs and notifications, according to their procedures and regulations, to inform the public of the restrictions. The area Agency Administrator should allow at least 96 hours for agencies to prepare for restrictions before the restriction goes into effect.

Once a restriction is in effect, participating agencies/tribes will not issue exemptions, exceptions, or waivers to the agreed-upon restrictions except through written individual permits. If permits are issued, affected agencies within the fire restriction area will be notified to avoid confusion among law enforcement and fire personnel. All such exemptions, exceptions or waivers shall be forwarded to the Area Fire Restrictions Coordinator and the Idaho Fire Restrictions Plan Coordinator.

Each agency will be responsible for informing their employees of the restrictions being enacted. Those responsible for public contact (receptionists, etc.) will be provided with a copy of the restrictions and appropriate map.

### C. Rescission

Areas should plan restrictions for the long-term danger and not react solely to short fluctuations in risk, weather, and fire danger/behavior. When Agency Administrators agree that the restriction should be removed, the Area Fire Restrictions Coordinator will coordinate public information as conditions warrant. Once the Agency Administrators within an area have agreed to rescind any or all restrictions they may be rescinded at any time, and within 48 hours all procedural requirements will be completed.

### **Process for Closures**

When fire danger/fire behavior threatens firefighter and public safety, the geographic Agency Administrators can implement large-scale closures. These large-scale closures may involve multiple areas and/or multiple jurisdictions. Implementation, rescission, and public notification of closures will occur at the geographic level. The Great Basin Coordination Group and/or the Northern Rockies Coordination Group will coordinate closures. Critical levels for implementation of large-scale closures shall be agreed upon by the geographic Agency Administrators before the start of fire season.

Small-scale closures will be used for isolated areas where public and firefighter safety is a concern. Area Agency Administrators will coordinate these closures when more than one jurisdiction is involved. When a single jurisdiction is involved, the Agency Administrator will inform the Area Fire Restrictions Coordinator, who will then inform the other agencies within the area.

## **APPENDIX 1 AUTHORITIES**

Fire restrictions and closures can be invoked on state, federal, and private lands under federal and state laws. The following are a reference of those authorities:

### **US Forest Service Authorities**

For Closures

36 CFR 261.52(e) – Going into or being upon an area

For Restrictions

36, CFR 261.50 – Fire

General that applies to both restrictions and closures

16 USC 551 and 18 USC 3559 and 3571 – Violation/Penalties

36 CFR 261.51 – Posting Requirements

### **Bureau of Land Management (BLM)**

Federal Land Policy and Management Act of 1976 (43 U.S.C. 1701, et seq.),  
Sections 302(b) and 301(a) 43, CFR, Part 9210 (Fire Management) 43, CFR, Part 9212 (Wildfire Prevention).

### **Tribes/Bureau of Indian Affairs (BIA)**

Forest restrictions and closures are issued by the Bureau of Indian Affairs and Agency Superintendent under authority established in 25 CFR 163.3, 25 CFR 163.28.

### **State of Idaho, Idaho Department of Lands (IDL)**

Using Idaho Code 38-115 as the authority, the State Board of Land Commissioners developed supplemental rules and regulations that the Director of the Department of Lands, or his designated representative as per IC 38-102, is responsible to apply. Rule IDAPA 20.04.01.060 covers campfire and other burning permits; IDAPA 20.04.01.070 provides for area closures; IDAPA 20.04.01.090 allows for invoking smoking limitations; and IDAPA 20.04.01.120 permits limiting activities to the least dangerous portion of the day. Any restrictions implemented by Director of the Department of Lands, or his designated representative, will apply to “forest land” and “range land” as defined in Idaho Code 38-101.

## **APPENDIX 2 ROLES AND RESPONSIBILITIES**

### **Idaho Restrictions Group**

The Idaho Restrictions Group is made up of representatives of the Idaho Department of Lands, the Bureau of Land Management and the US Forest Service. This group oversees restrictions planning and implementation throughout the state of Idaho and appoints annually from its membership the Idaho Fire Restrictions Plan Coordinator. Generally, the coordinator role will rotate through the group on a bi-annual basis, with the USFS representative performing the role in 2008/09, BLM in 2010/11, and IDL in 2012/13. The Idaho Restrictions Group is responsible for the following:

- Ensure that orders are accurate and approved through their legal counsel and law enforcement professionals.
- Jointly, develop an Idaho fire restrictions planning document.
- Ensure that the Idaho Fire Restrictions Plan Coordinator has the tools needed to perform successfully.
- Ensure that their agency follows all measures stated in an order.
- Monitor the success of any enacted restriction.
- Follow and endorse the Idaho Fire Restrictions Plan.
- Coordinate statewide plan development and all future updates with both the Great Basin and Northern Rockies Coordinating Groups.

### **Idaho Fire Restrictions Plan Coordinator**

The Idaho Fire Restrictions Plan Coordinator, who serves a two-year term, is responsible to provide the Area Fire Restrictions Coordinators advice and counsel on the following:

- Need for restrictions across areas.
- Impact of restrictions across areas.
- Coordination of restrictions between areas.
- Coordination and implementation of closures.
- Coordination of public notification and media releases at the statewide/geographic level.
- Encourage areas to review/adjust criteria in Area Restrictions Plan.

### **Agency Administrator**

#### **Usually Line Officers or Fire Management Officers in the local fire protection jurisdiction.**

The area Agency Administrators (Line Officers/FMOs) are responsible for the following:

- Nominate an Area Fire Restrictions Coordinator.
- Jointly, develop an Area Restrictions Plan.
- Participate in restrictions decisions and orders for the area.
- Ensure that their agency follows all measures stated in an order.
- Ensure that the Idaho Fire Restrictions Plan Coordinator has the tools needed to perform successfully.
- Monitor the success of the enacted restriction and provide timely feedback to the area decision team.
- Follow and endorse the Idaho Fire Restrictions Plan.



## **Area Fire Restrictions Coordinator**

The Area Fire Restrictions Coordinator is responsible for the following:

- Ensure all Agency Administrators in the zone have a copy of the Area Restrictions Plan and review it annually.
- Oversee the restriction implementation and rescission process. Ensure that restrictions decisions are collaborative and align with pre-established criteria.
- Coordinate local public notification.
- Gather all information from each cooperator needed to make informed decisions. Monitor fire restriction criteria for each agency within the restriction area.
- Communicate with neighboring areas on their activity and keep the Idaho Fire Restrictions Plan Coordinator informed of decisions, implementation activities and problems.
- Identify a person for media contacts within the area.
- Monitor and gather information for timely rescinding orders.

## **APPENDIX 3**

### **AREA BOUNDARIES IN NARRATIVE FORMAT**

#### **Big Desert Fire Restrictions Area**

All of Butte, Bingham, Jefferson and Madison Counties, and portions of Power and Oneida Counties. Excludes those lands in Power and Oneida Counties that are administered by the Sawtooth National Forest.

#### **Caribou Highlands Fire Restrictions Area**

All of Bannock, Bear Lake, Caribou, and Franklin Counties.

#### **Centennial Fire Restrictions Area**

All of Bonneville, Clark, Fremont, and Teton Counties.

#### **Central Idaho Fire Restrictions Area**

Those portions of Custer County that are north and east of the Sawtooth National Recreation Area and are not federal lands designated as wilderness. That portion of Lemhi County that is not federal land designated as wilderness.

#### **Clearwater Fire Restrictions Area**

All of Nez Perce, Clearwater, and Lewis Counties. Those portions of Idaho County that are north of the Salmon River (east of Riggins), west of Highway 95 (south of Riggins) and are not federal lands designated as wilderness. That portion of Adams County that lies within the Hells Canyon National Recreation Area.

#### **Owyhee Mountains Fire Restrictions Area**

All of Owyhee County.

#### **Panhandle Fire Restrictions Area**

All of the six Idaho Panhandle counties (Boundary, Bonner, Kootenai, Shoshone, Benewah, and Latah).

#### **South Central Fire Restrictions Area**

All of Cassia, Gooding, Jerome, Lincoln, Minidoka and Twin Falls Counties. Those portions of Blaine and Camas Counties that lie south of State Highway 20. That portion of Power and Oneida Counties that lies within the Sawtooth National Forest.

#### **Treasure Valley Fire Restrictions Area**

All of Ada, Canyon, Gem, Payette and Washington Counties. That portion of Elmore County that lies south of Interstate 84.

#### **West Central Mountains Fire Restrictions Area**

All of Boise County. All of Adams County except that portion that is contained within the Hells Canyon National Recreation Area. Those portions of Idaho County that are south of the Salmon River (east of Riggins), east of Highway 95 (south of Riggins) and are not federal lands designated as wilderness. That portion of Blaine and Camas Counties that lie north of State Highway 20. That portion of Elmore County that lies north of Interstate 84. That portion of southwestern Custer County bound to the north and east by the Sawtooth National Recreation Area. All of Valley County except those federal lands designated as wilderness.

#### **Wilderness Areas Fire Restrictions Area**

All federal lands in Custer, Lemhi, Valley and Idaho Counties that are designated as wilderness, specifically the Frank Church River of No Return, the Gospel Hump and the Selway-Bitterroot Wilderness Areas. Non-federal land inclusions within the wilderness belong to the restriction area that corresponds to the county in which the inclusion lies. See Wilderness Fire Restrictions Area map in Appendix 9 for reference.

## **APPENDIX 4**

### **GUIDELINES FOR IMPLEMENTING RESTRICTIONS**

When weather factors, fire behavior, or fire suppression impacts become a concern, the following criteria can be used to determine if a fire restriction is justified. Before the fire season, each area should review these evaluation guidelines and determine threshold levels that substantiate the need for each restriction. These thresholds for restrictions should well exceed the normal fire season conditions.

Examples include:

- 1,000-hour fuel moisture content.
- Three-day mean energy release component.
- Live fuel moisture content.
- Fire danger rating adjective class is at very high or extreme.
- Fires are impacting available suppression resources making adequate initial attack difficult.
- Area is receiving a high occurrence of human-caused fires.
- Adverse fire weather conditions and risks are predicted to continue.
- Life safety is jeopardized.

## **APPENDIX 5**

### **STAGE I AND STAGE II RESTRICTIONS**

There will be two fire restriction stages: Stage I and Stage II. Each agency/tribe with a fire restriction area must write its own agency/tribal document that authorizes the restrictions within its jurisdiction. Each agency/tribe is responsible for using its own format and having their Legal Counsel review the document to assure it is correct and enforceable. To reduce confusion and standardize the restrictions, the following criteria will be used in all restriction documents:

#### **STAGE I**

**The following acts are prohibited until further notice:**

1. Building, maintaining, attending, or using a fire, campfire or stove fire except within a designated recreation site, or on their own land, and only within an owner-provided fire structure (see definition).
2. Smoking, except within an enclosed vehicle, building, or designated recreation site, or while stopped in an area at least three feet in diameter that is barren or cleared of all flammable materials.

#### **Exemptions**

1. Persons with a written permit that specifically authorizes the otherwise prohibited act.
2. Persons using a fire solely fueled by liquid petroleum or LPG fuels. Such devices, including propane campfires, may be used only in an area cleared of flammable material.
3. Persons using stove fires with a chimney of at least five (5) feet in length and employing a spark arrester with a maximum mesh screen opening of ¼ inch on federal lands designated as the Frank Church River of No Return, Gospel Hump or Selway-Bitterroot Wilderness Areas.
4. Persons using metal fire pans\* (see definition) within ¼ mile of:
  - a. The Salmon River from the Corn Creek launch site to its mouth at the Snake River.
  - b. The Middle Fork of the Salmon River.
  - c. The Selway River from the Paradise boat launch to Race Creek.
  - d. The Snake River from Hells Canyon Dam to the City of Lewiston.

**\*Pack-out of ashes is required.**

5. Private landowners using charcoal (disposed of properly) or propane barbecues on their own lands.
6. Persons conducting activities in those designated areas where the activity is specifically authorized by written posted notice.
7. Any federal, state, or local officer or member of an organized rescue or firefighting force, in the performance of an official duty.
8. All land within a city boundary.

**An exemption does not absolve an individual or organization from liability or responsibility for any fire started by the exempted activity.**

## **STAGE II**

**The following acts are prohibited until further notice:**

1. Building, maintaining, attending, or using a fire, campfire, or stove fire.
2. Smoking, except within an enclosed vehicle or building, a designated recreation site or while stopped in an area at least three feet in diameter that is barren or cleared of all flammable materials.
3. Operating motorized vehicles off designated roads and trails in accordance with existing travel management plans.
4. The following acts are prohibited from 1:00 p.m. to 1:00 a.m. A patrol is required for one hour following cessation of all work as described in **a**, **b** and **c** below.
  - a. Operating a chainsaw or other equipment powered by an internal combustion engine for felling, bucking, skidding, processing, road building and woodcutting during industrial operations or fire wood gathering.
  - b. Blasting, welding, or other activities that generate flame or flammable material.
  - c. Using an explosive.

## **Exemptions**

1. Persons with a written permit that specifically authorizes the otherwise prohibited act.
2. Persons using a fire or stove fire fueled solely by liquid petroleum or LPG fuels. Such devices, including propane campfires, may be used only in an area cleared of flammable material.
3. Persons using stove fires with a chimney of at least five (5) feet in length and employing a spark arrester with a maximum mesh screen opening of ¼ inch on federal lands designated as the Frank Church River of No Return, Gospel Hump or Selway-Bitterroot Wilderness Areas.
4. Persons using metal fire pans\* (see definition) within ¼ mile of:
  - a. The Salmon River from the Corn Creek launch site to its mouth at the Snake River.
  - b. The Middle Fork of the Salmon River.
  - c. The Selway River from the Paradise boat launch to Race creek.
  - d. The Snake River from Hells Canyon Dam to the City of Lewiston.

**\*Pack-out of ashes is required.**

5. Persons using a generator with an approved spark arrester on areas that are cleared of all flammable materials within three feet of the generator.
6. Log loading and hauling only – from landings and existing roads and only on non-federal lands.
7. Private landowners using charcoal (disposed of properly) or propane barbecues on their own lands.

8. Crop lands.
9. Emergency repair of public utilities and railroads as per attached conditions in Stage II Exemptions for Public Utilities and Railroads, Appendix 10.
10. Any federal, state, or local officer, or member of an organized rescue or firefighting force, in the performance of an official duty.
11. Persons conducting activities in those designated areas where the activity is specifically authorized by written posted notice.
12. All land within a city boundary.

**An exemption does not absolve an individual or organization from liability or responsibility for any fire started by the exempted activity.**

## **APPENDIX 6 DEFINITIONS**

The following definitions should be used as part of, or referenced to, in the Special Orders or Laws that initiate and authorize a Stage I or Stage II Restriction:

**AGENCY ADMINISTRATOR**: That person vested with the overall responsibility and authority for an agency at an administrative unit. These individuals may include BIA Superintendents, Forest Supervisors, State Lands Area Managers, BLM District Managers, Park Managers and other state agency officials. Agency Administrators at the Geographical Area Level would include the Regional Forester, BLM State Director, and the Director of the Idaho Department of Lands.

**CAMPFIRE**: A fire, not within any building, mobile home, or living accommodation mounted on a vehicle, which is used for cooking, branding, personal warmth, lighting, ceremonial, or aesthetic purposes. Campfires are open fires (usually built on the ground) using native fuels or charcoal, and include burn barrels, enclosed fireplace stands, and charcoal grills.

**APPROVED SPARK ARRESTER**: A spark arresting device for internal combustion engines that is properly installed, maintained, and in effective working order meeting either: (1) U.S. Department of Agriculture, Forest Service Standard 5100-1a, or (2) Appropriate Society of Automotive Engineers (SAE) recommended practice J335(b) and J350(a).

**CHAINSAW**: A saw powered by an internal combustion engine, with cutting teeth linked in an endless chain.

**CLOSURE**: The closing of an area to entry or use.

**DESIGNATED ROADS AND TRAILS**: Those roads and trails that are identified on maps regularly provided to the public by land management agencies.

**DESIGNATED RECREATION SITE**: A recreation area that has been improved and designated by sign as a privately-owned commercial campground, tribal, or agency-owned campground, picnic area, or trail head.

**METAL FIRE PAN**: A metal fire pan with sides at least three inches high with a metal grate on top.

**MOTORIZED EQUIPMENT**: Any equipment or vehicle powered by an internal combustion engine.

**OWNER-PROVIDED FIRE STRUCTURE**: A permanent metal or concrete improvement specifically designed for the purpose of containing a campfire, or cooking fire provided by the agency, or landowner with a clearance of ten feet on all sides that is free of any flammable vegetation. This does not include a metal fire pan as defined above.

**PATROL**: One or more people who will travel through a work site checking for, suppressing, and reporting fires discovered adjacent to and within the work site.

**PERMIT**: A written document issued by an authorized agency representative to specifically authorize an otherwise prohibited act.

**RESTRICTION**: A limitation on an activity or use.

**STOVE FIRE**: A fire built inside a fully enclosed metal stove, grill, or sheep herder type stove.

## **APPENDIX 7 AREA FIRE RESTRICTIONS COORDINATORS**

<b>Big Desert</b>	Jared Fisher, Eastern Idaho Interagency Fire Center, 208-524-7669
<b>Caribou Highlands</b>	Jared Fisher, Eastern Idaho Interagency Fire Center, 208-524-7669
<b>Centennial</b>	Jared Fisher, Eastern Idaho Interagency Fire Center, 208-524-7669
<b>Central Idaho</b>	Paul Sever, Central Idaho Coordination Center, 208-756-5448
<b>Clearwater</b>	Ken Ockfen, Idaho Department of Lands, 208-666-8650
<b>Owyhee Mountains</b>	Jill Leguineche, Boise Interagency Logistics Center, 208-384-3380
<b>Panhandle</b>	Ken Ockfen, Idaho Department of Lands, 208-666-8650
<b>South Central</b>	Curtis Jensen, South Idaho Interagency Logistics Ctr. 208-732-7202
<b>Treasure Valley</b>	Jill Leguineche, Boise Interagency Logistics Center, 208-384-3380
<b>West Central Mountains</b>	Jill Leguineche, Boise Interagency Logistics Center, 208-384-3380
<b>Wilderness Areas</b>	Paul Sever, Central Idaho Coordination Center, 208-756-5448

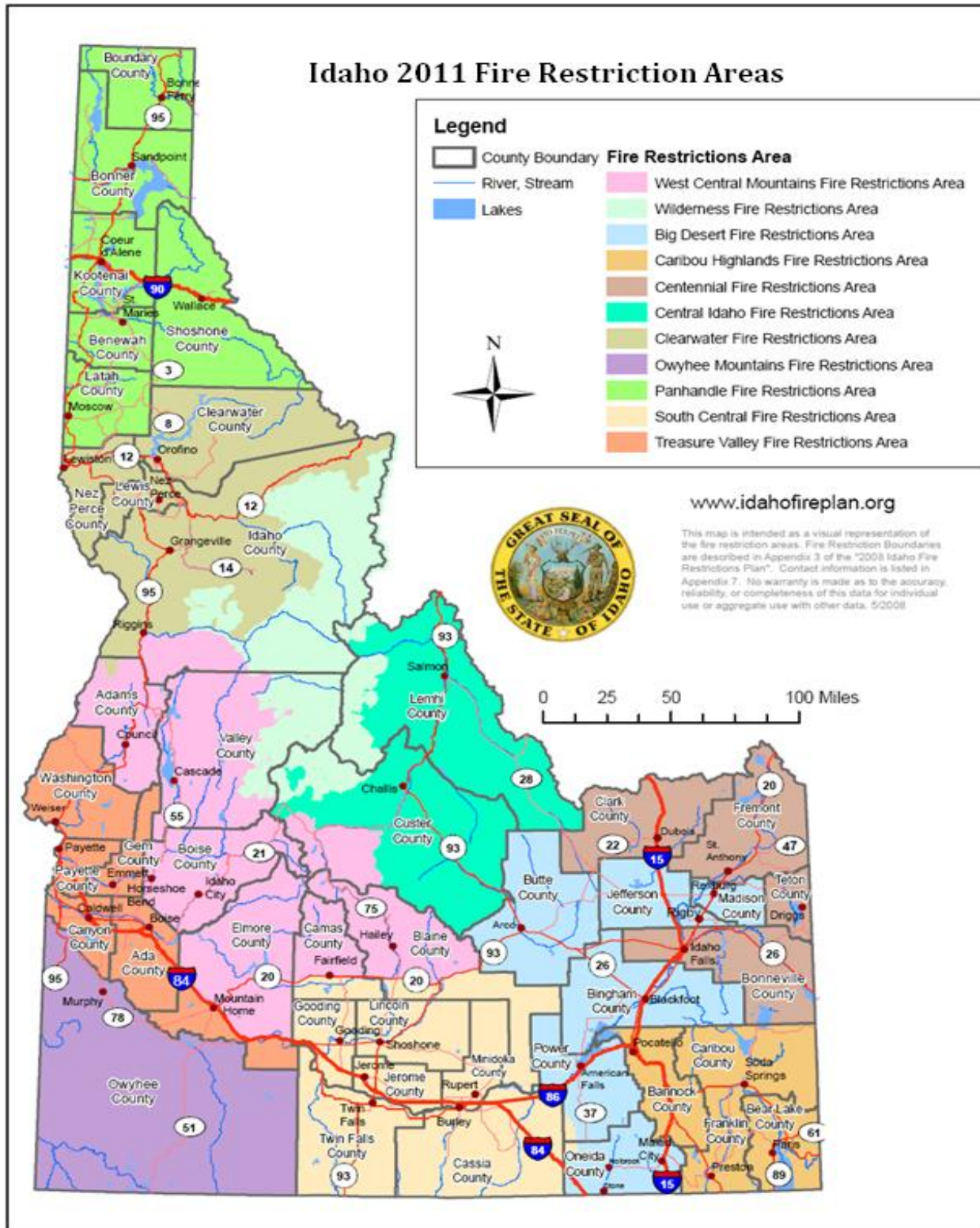
**Idaho Fire Restrictions Plan Coordinator** - Ken Ockfen, Idaho Department of Lands, (208) 666-8650

The Idaho Fire Restrictions Plan Coordinator position will rotate between the USFS, IDL, and BLM and will serve a 2-year term. The rotation schedule (which is subject to change) is as follows:

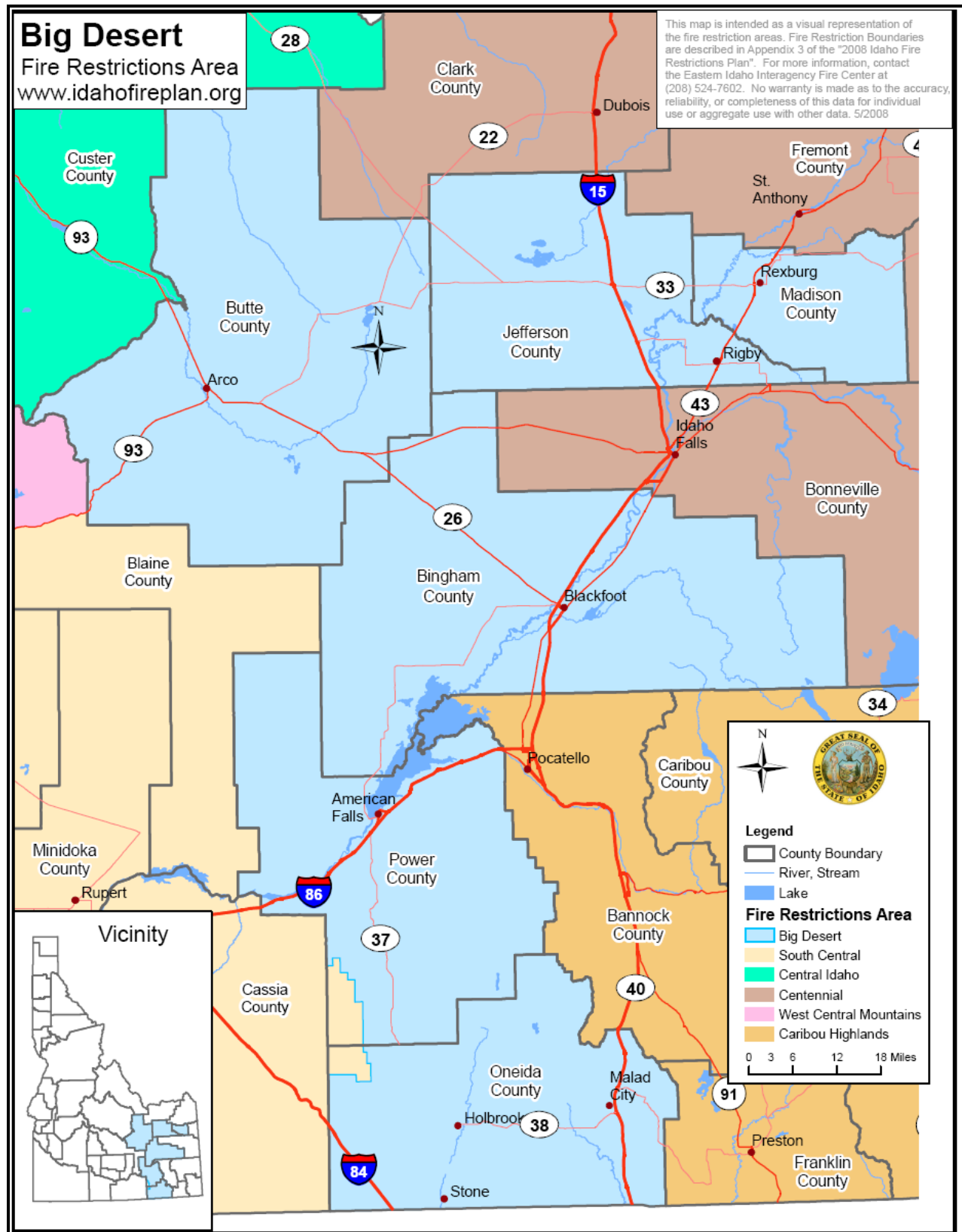
USFS – 2014-2015  
BLM – 2016-2017  
IDL – 2018-2019



## APPENDIX 8: MAP OF IDAHO FIRE RESTRICTIONS AREAS



## APPENDIX 9: FIRE RESTRICTIONS AREA PLANS (in alphabetical order): BIG DESERT



## **BIG DESERT FIRE RESTRICTIONS AREA**

### **Area Fire Restrictions Coordinator**

The Idaho Falls District Fire Prevention and Mitigation Specialist will serve as the Area Fire Restrictions Coordinator representing the public land agencies with jurisdiction in this area. The position will be rotated between the USFS and the BLM every two years.

### **Fire Restrictions Evaluation Guidelines**

The following guidelines will be used to assist in determining when to consider initiating or rescinding restrictions. The weather-related factors will be taken from RAWs and/or manual weather stations that best represent the conditions in the Big Desert Fire Restrictions Area:

- ☐ 1,000 hr. Time Lag Fuel Moisture Content is 12 percent or less.
- ☐ Three-day mean Energy Release Component (ERC) is at the 90th percentile or above.
- ☐ Live Fuel Moisture Content is 75 percent or less.
- ☐ Fire Danger Rating Adjective Class is at very high or extreme.
- ☐ Area is receiving high occurrence of human-caused fire starts or the risk is predicted to increase.
- ☐ Adverse fire weather conditions and risks are predicted to continue.

#### **Stage I**

If at least three of the above conditions are met, consider a Stage I restriction.

#### **Stage II**

Consider initiating a Stage II restriction after a Stage I restriction has been in effect and four or more of the above conditions are met.

### **Area Land Management Decision Group**

The following Public Land Management Administrators will be advised of present and predicted fire conditions and risks from information listed in the Evaluation Guidelines above by the Fire Restrictions Plan Coordinator. Jointly, they will discuss the need for initiating or removing restrictions, timing, and make decisions if these actions are warranted. To avoid confusion to the public, a majority of the agencies must agree that the actions are necessary before they will be initiated for the area. After coming to agreement, each agency will be responsible for completing the written documentation and initiating the notification procedures required by law to legalize the restrictions within their jurisdiction.

- \* Caribou/Targhee National Forest
- \* Idaho Department of Lands

- \* Idaho Falls District - BLM
- \* Fort Hall Agency, Bureau of Indian Affairs

### **Key Contact List**

The following administrative agencies will be notified of the impending restrictions and provide maps of the restriction areas, reasoning for going into restrictions, present fire conditions, etc., prior to releasing the information to the public. Enough information will be provided to them to allow them the ability to accurately answer questions from their local constituents.

## **Fire Departments**

- |                         |                      |                     |
|-------------------------|----------------------|---------------------|
| * Central Fire District | * West Jefferson FD  | * Hamer FD          |
| * Roberts FD            | * Ft. Hall FD        | * Blackfoot FD      |
| * Shelley-Firth FD      | * Rexburg-Madison FD | * INL FD            |
| * Arco FD               | * Lost River FD      | * American Falls FD |
| * Rockland FD           | * Oneida County FD   | * Chubbuck FD       |

## **Law Enforcement Agencies**

- |                       |                      |
|-----------------------|----------------------|
| * Madison County SD   | * Idaho State Police |
| * Jefferson County SD | * Butte County S.D   |
| * Bingham County SD   | * Power County S.D   |
| * Oneida County SD    |                      |

## **State Agencies**

- |  |                                      |
|--|--------------------------------------|
| * Idaho Department of Parks & Recreation | * Idaho Department of Transportation |
| * Bureau of Homeland Security            | * Idaho Department of Fish & Game    |

## **Other Federal Agencies**

- |                              |                                  |
|------------------------------|----------------------------------|
| * Sawtooth National Forest   | * Salmon-Challis National Forest |
| * US Fish & Wildlife Service | *Twin Falls District BLM         |
| * Bureau of Reclamation      |                                  |

## **Media Plan**

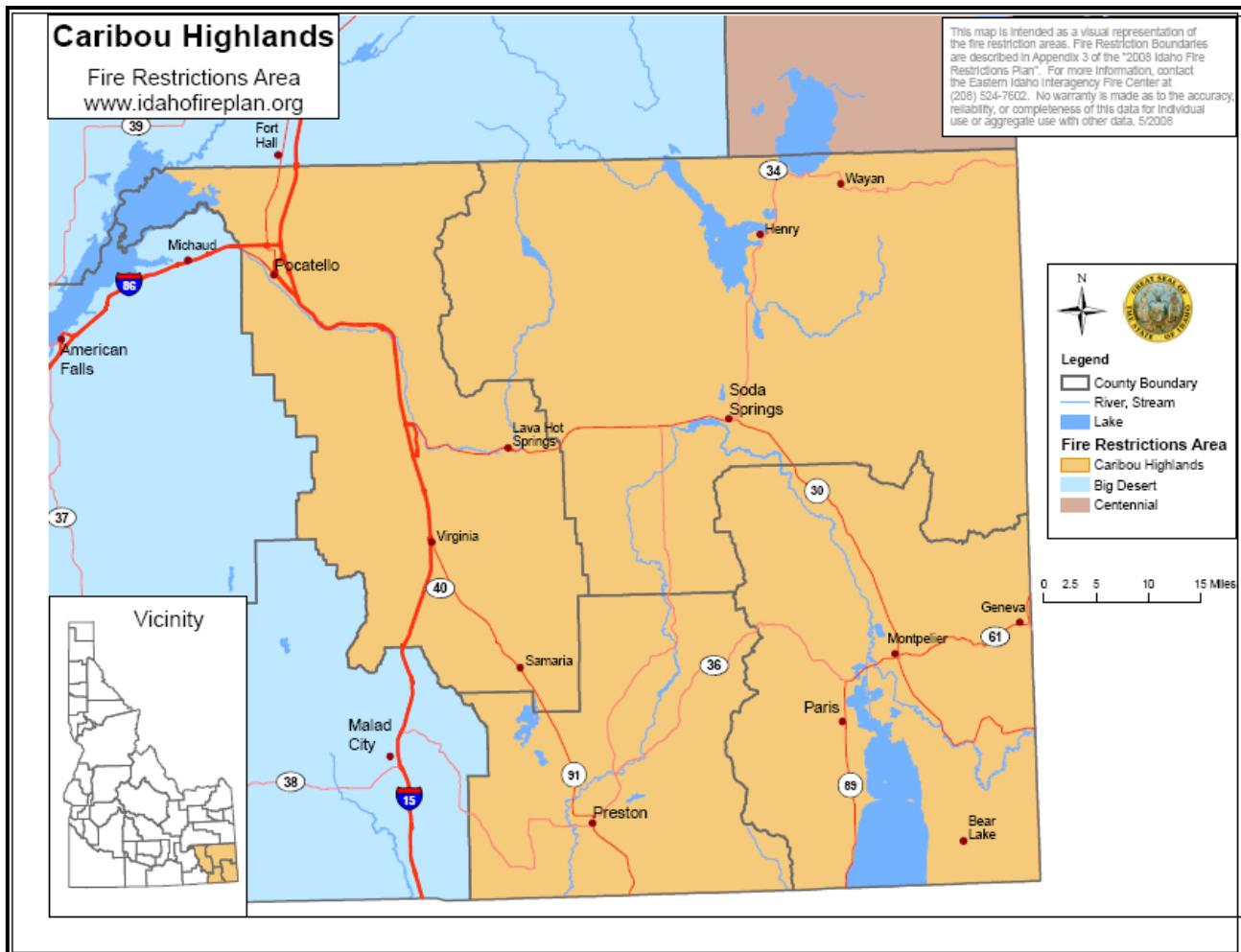
The Media Plan for the area will be the responsibility of the Idaho Falls District BLM Public Information Officer. Their alternate will be the Caribou-Targhee National Forest Public Information Officer. Objectives of the Media Plan will be to keep the public and agency employees informed of present and predicted fire conditions and restrictions, in order to reduce the number of human-caused fire starts and the potential threats to lives and property.

## **Responsibilities of the Lead Public Affairs Officer**

Work with the Area Fire Restrictions Coordinator on timing of initiating or rescinding restrictions and prevention personnel on problem identification to assure an organized approach.

- Assure that all of the personnel of the Land Management Agencies are informed of the restrictions, boundaries, reasoning, etc.
- Keep well informed on present and predicted fire conditions and what their impacts may be.
- Design a systematic procedure for releasing information to all of the media (radio, print, television, etc.)
- Take all steps possible to assure that the public is informed of the restrictions, boundaries, etc.
- Inform all agencies listed in the Key Contact List of the restrictions prior to making the information public so they have answers to upcoming questions. Provide them with maps of the restriction area(s), current and predicted fire conditions, and the exact requirements of the restrictions.
- Weave the fire restrictions into the overall prevention program to optimize effectiveness.
- Work to develop new and innovative methods of making the public aware of fire problems as well as steps to reduce fire impacts.

## APPENDIX 9: FIRE RESTRICTIONS AREA PLANS: CARIBOU HIGHLANDS



## **CARIBOU HIGHLANDS FIRE RESTRICTIONS AREA**

### **Area Fire Restrictions Coordinator**

The Idaho Falls District Fire Prevention and Mitigation Specialist will serve as the Area Fire Restrictions Coordinator representing the public land agencies with jurisdiction in this area. The position will be rotated between the USFS and the BLM every two years.

### **Fire Restrictions Evaluation Guidelines**

The following guidelines will be used to assist in determining when to consider initiating or rescinding restrictions. The weather-related factors will be taken from RAWs and/or manual weather stations that best represent the conditions in the Caribou Highlands Fire Restrictions Area:

- ☐ 1,000 hr. Time Lag Fuel Moisture Content is 12 percent or less.
- ☐ Three-day mean Energy Release Component (ERC) is at the 90th percentile or above.
- ☐ Live Fuel Moisture Content is 75 percent or less.
- ☐ Fire Danger Rating Adjective class is at very high or extreme.
- ☐ Area is receiving high occurrence of human-caused fire starts or the risk is predicted to increase.
- ☐ Adverse fire weather conditions and risks are predicted to continue.

#### **Stage I**

If at least three of the above conditions are met consider a Stage I restriction.

#### **Stage II**

Consider initiating a Stage II restriction after a Stage I restriction has been in effect and four or more of the above conditions are met.

### **Area Land Management Decision Group**

The following Public Land Management Administrators will be advised of present and predicted fire conditions and risks from information listed in the Evaluation Guidelines above by the Fire Restrictions Plan Coordinator. Jointly, they will discuss the need for initiating or removing restrictions, timing, and make decisions if these actions are warranted. To avoid confusion to the public, a majority of the agencies must agree that the actions are necessary before they will be initiated for the area. After coming to agreement, each agency will be responsible for completing the written documentation and initiating the notification procedures required by law to legalize the restrictions within their jurisdiction.

\* Caribou-Targhee National Forest  
\* Idaho Department of Lands

\*Idaho Falls District - BLM  
\*Fort Hall Agency– BIA

### **Key Contact List**

The following administrative agencies will be notified of impending restrictions and provided maps of restriction areas, reasoning for going into restrictions, present and predicted fire conditions, etc. prior to the information being released publicly. Enough information will be provided to them to allow them the ability to accurately answer questions from their local constituents.

## **Fire Departments**

- |                       |                       |                     |
|-----------------------|-----------------------|---------------------|
| * Pocatello FD        | * Pocatello Valley FD | * Caribou County FD |
| * Inkom FD            | * Arimo FD            | * Bancroft FD       |
| * McCammon FD         | * Downey FD           | * Grace FD          |
| * Lava Hot Springs FD | * Chubbuck FD         | * Soda Springs FD   |
| * Ft. Hall FD         | * Bear Lake County FD | * Montpelier FD     |
| * Franklin County FD  |                       |                     |

## **Law Enforcement Agencies**

- |                       |                     |                      |
|-----------------------|---------------------|----------------------|
| * Idaho State Police  | * Bannock County SD | * Franklin County SD |
| * Bear Lake County SD | * Caribou County SD |                      |

## **State Agencies**

- |  |                                      |
|--|--------------------------------------|
| * Idaho Department of Parks & Recreation | * Idaho Department of Transportation |
| * Bureau of Homeland Security            | * Idaho Department of Fish & Game    |

## **Other Federal Agencies**

- \* U.S. Fish & Wildlife Service
- \* Bureau of Reclamation

## **Media Plan**

The Media Plan for the area will be the responsibility of the Idaho Falls District, BLM Public Information Officer. Their alternate will be the Caribou-Targhee National Forest Public Information Officer. Objectives of the Media Plan will be to keep the public and agency employees informed of present and predicted fire conditions and restrictions, in order to reduce number of human-caused fire starts and the potential threats to lives and property.

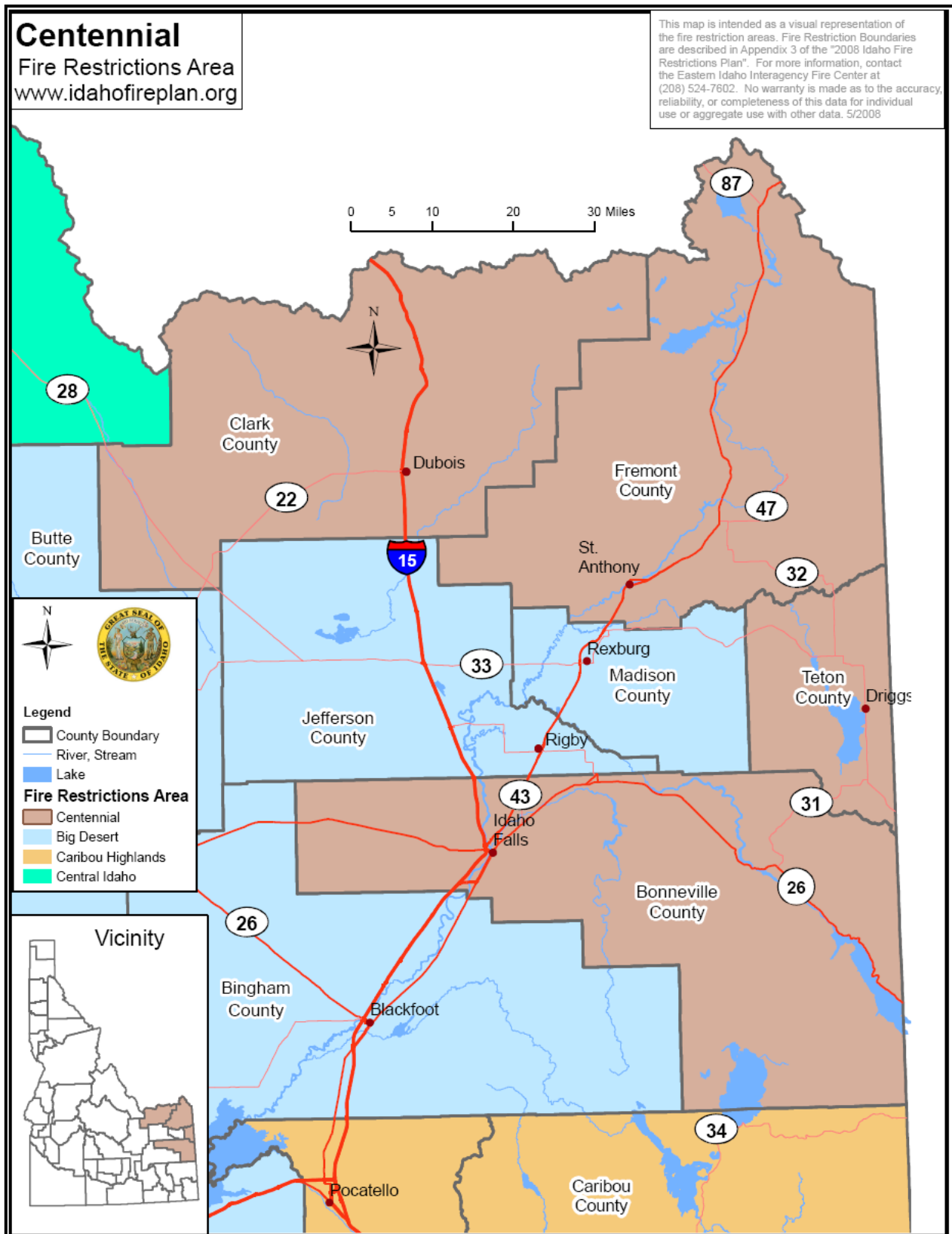
## **Responsibilities of the Lead Public Affairs Officer**

Work with the Area Fire Restrictions Coordinator on timing of initiating or rescinding restrictions and prevention personnel on problem identification to assure an organized approach.

- Assure that all of the personnel of the Land Management Agencies are informed of the restrictions, boundaries, reasoning, etc.
- Keep well informed on present and predicted fire conditions and what their impacts may be.
- Design a systematic procedure for releasing information to all of the media (radio, print, television, etc.)
- Take all steps possible to assure that the public is informed of the restrictions, boundaries, etc.
- Inform all agencies listed in the Key Contact List of the restrictions prior to making the information public so they have answers to upcoming questions. Provide them with maps of the restriction area(s), current and predicted fire conditions, and the exact requirements of the restrictions.
- Weave the fire restrictions into the overall prevention program to optimize effectiveness.
- Work to develop new and innovative methods of making the public aware of fire problems as well as steps to reduce fire impacts.



## APPENDIX 9: FIRE RESTRICTIONS AREA PLANS AND MAPS: CENTENNIAL





## **CENTENNIAL FIRE RESTRICTIONS AREA**

### **Area Fire Restrictions Coordinator**

The Idaho Falls District Fire Prevention and Mitigation Specialist will serve as the Area Fire Restrictions Coordinator representing the public land agencies with jurisdiction in the area. The position will be rotated between the USFS and the BLM every two years.

### **Fire Restrictions Evaluation Guidelines**

The following guidelines will be used to assist in determining when to consider initiating restrictions or removing them. The weather related factors will be taken from RAWS and Manual weather stations that best represent conditions in the Centennial Restrictions Area.

- ☐ 1,000 hr. Time Lag Fuel Moisture Content is 12 percent or less.
- ☐ Three-day mean Energy Release Component (ERC) is at the 90th percentile or above.
- ☐ Live fuel Moisture Content is 75 percent or less.
- ☐ Fire Danger Rating Adjective Class is at very high or extreme.
- ☐ Fires are impacting available suppression forces making adequate initial attack difficult.
- ☐ Area is receiving high occurrence of human-caused fire starts or the risk is predicted to increase.
- ☐ Adverse fire weather conditions and risks are predicted to continue.

#### **Stage I**

If at least three of the above conditions are met consider a Stage I restriction.

#### **Stage II**

Consider initiating a Stage II restriction after a Stage I restriction has been in effect and four or more of the above conditions are met.

### **Area Land Management Decision Group**

The following Public Land Management Agency Administrators will be advised of present and predicted fire conditions and risks from information listed in the Evaluation Guidelines above by the Area Fire Restrictions Coordinator. Jointly, they will discuss the need for initiating or removing restrictions, timing, and make decisions if these actions are warranted. A majority of the agencies must agree that the actions are necessary before they are initiated for the area to avoid confusing the public. After coming to agreement, each agency will complete the written documentation and initiate the notification procedures required by law to legalize the actions within their jurisdiction.

\* Caribou-Targhee National Forest

\* Idaho Falls District - BLM

\* Idaho Department of Lands

### **Key Contact List**

The following administrative agencies will be notified of impending restrictions, dates, maps of restriction areas, etc., prior to releasing the information to the public. Enough information will be provided to them allow the ability to accurately answer questions from their local constituents.

## **Fire Departments**

- |                   |                    |                    |
|-------------------|--------------------|--------------------|
| * Idaho Falls FD  | * Swan Valley FD   | * Alpine FD        |
| * Dubois City FD  | * Ammon FD         | * Ucon FD          |
| * Island Park FD  | * North Fremont FD | * South Fremont FD |
| * Teton County FD |                    |                    |

## **Law Enforcement Agencies**

- |                        |                     |
|------------------------|---------------------|
| * Bonneville County SD | * Teton County SD   |
| * Clark County SD      | * Fremont County SD |

## **State Agencies**

- |  |                                      |
|--|--------------------------------------|
| * Idaho Department of Parks & Recreation | * Idaho Department of Transportation |
| * Bureau of Homeland Security            | * Idaho Department of Fish & Game    |

## **Other Federal Agencies**

- |                                       |                             |
|---------------------------------------|-----------------------------|
| * Bureau of Reclamation               | * Bridger-Teton NF          |
| * All Districts in Caribou-Targhee NF | * Beaverhead NF             |
| * US Fish & Wildlife Service          | * Rock Springs District BLM |
| * Yellowstone NP                      | * Grand Teton NP            |
| * Gallatin NF                         |                             |

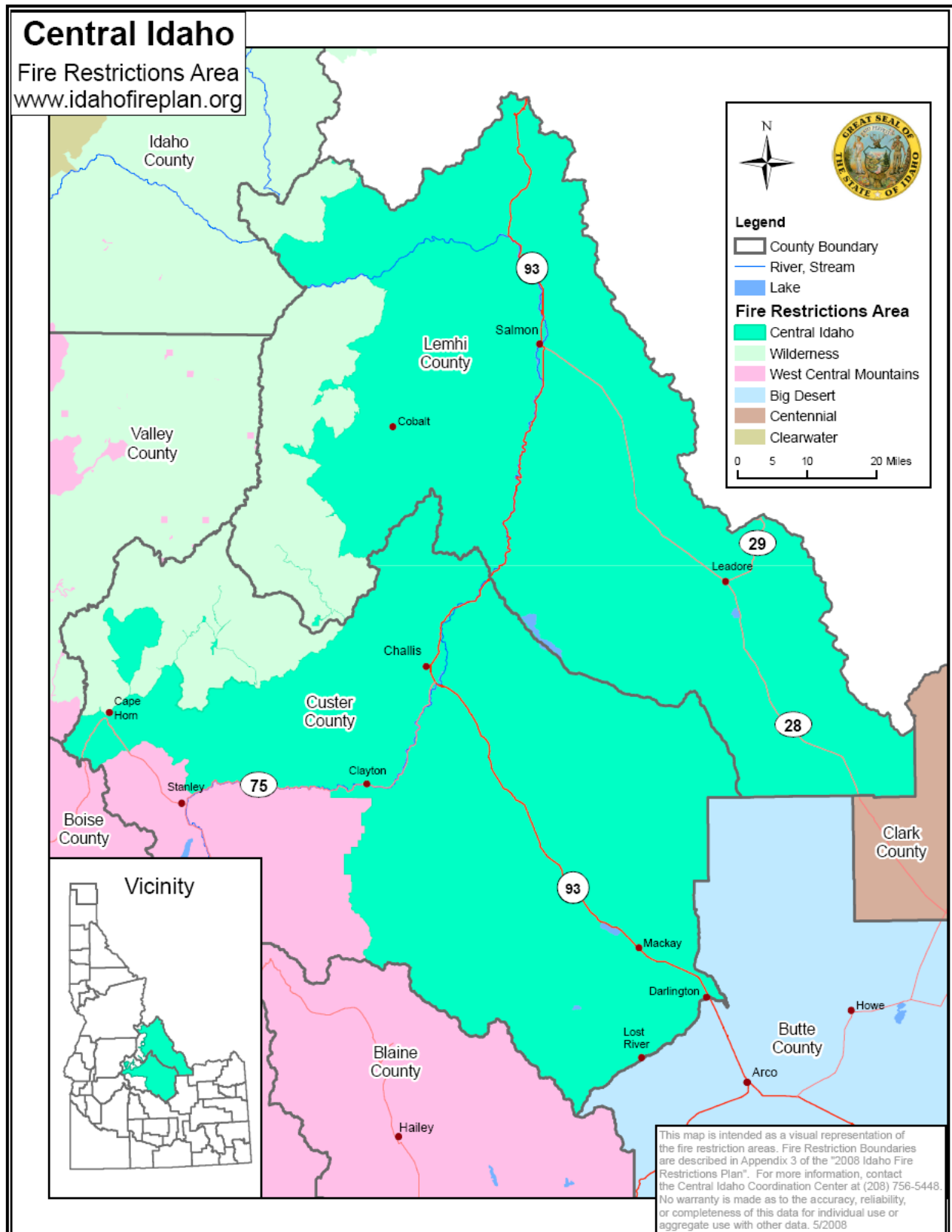
## **Media Plan**

The Media Plan for the Centennial Area will be the responsibility of the Caribou-Targhee National Forest Public Information Officer. Their alternate will be the Idaho Falls District - BLM. Public Information Officer. Objectives of the Media Plan will be to keep the public and agency employees informed of present and predicted fire conditions and restrictions, in order to reduce the number of human caused fire starts and potential threats to lives and property.

## **Responsibilities of the Lead Public Affairs Officer**

- Work with Area Fire Restrictions Coordinator on timing of initiating or rescinding restrictions and prevention personnel on problem identification to assure an organized approach.
- Assure that all of the internal personnel of the Land Management Agencies are informed of the restrictions, boundaries, reasons, etc.
- Keep well-informed on present and predicted fire conditions and potential impacts.
- Design a systematic procedure for releasing information to all of the media (radio, print, television, etc.)
- Take all steps possible to assure that the public is informed of the restrictions, boundaries, etc.
- Inform all agencies listed in the Key Contact List of the restrictions prior to making the information public so they have answers to upcoming questions. Provide them with maps of the restriction areas, current fire behavior conditions and projections, and exact requirements of the restrictions.

## APPENDIX 9: FIRE RESTRICTIONS AREA PLANS AND MAPS: CENTRAL IDAHO



## **CENTRAL IDAHO FIRE RESTRICTIONS AREA**

### **Area Fire Restrictions Coordinator**

The Central Idaho Interagency Fire Center Manager will serve as the Area Fire Restrictions Coordinator representing the Public Land Agencies with jurisdiction in the Central Idaho Restrictions Area.

### **Fire Restrictions Evaluation Guidelines**

The following guidelines will be used to determine initiating or rescinding restrictions. When environmental factors or the impact of the commitment of resources to fire suppression (locally, geographically, or nationally) approach the guideline levels for Stage I or Stage II a fire restriction should be considered for the whole area. Negotiation among the agencies within the area will be based on data taken from RAWs and manual weather stations throughout the restriction area that best represent conditions in the Central Idaho Restriction Area.

- ☐ 1,000 hr. Time lag Fuel Moisture Content is 12 percent or less.
- ☐ Three-day mean Energy Release Component (ERC) is at the 90th percentile or above.
- ☐ Live fuel Moisture Content is 75 percent or less.
- ☐ Fire Danger Rating Adjective Class is at very high or extreme.
- ☐ Commitment of resources to local, GACC or National assignment limits adequate initial attack capability.
- ☐ Area is receiving human-caused fire starts or the risk is predicted to increase.
- ☐ Adverse fire weather conditions and risks are predicted to continue.

#### **Stage I**

If at least three of the above conditions are met, consider a Stage I restriction.

#### **Stage II**

Consider initiating a Stage II restriction after a Stage I restriction has been in effect and four or more of the above conditions are met.

### **Area Land Management Decision Group**

The following Public Land Management Agency Administrators will be advised of present and predicted fire conditions and risks from information listed in the Evaluation Guidelines above, for Central Idaho Area by the Area Fire Restrictions Coordinator. Jointly, they will discuss the need for initiating or removing restrictions, timing, and make decisions if these actions are warranted. A majority of the agencies must agree that the actions are necessary before they are initiated for the area to avoid confusing the public. After coming to agreement, each agency will complete the written documentation and initiate the notification procedures required by law to legalize the actions within their jurisdiction.

\* Idaho Falls District BLM, Salmon and Challis Field Offices

\* Salmon-Challis NF

\* Custer County

\* Idaho Department of Lands

\* Lemhi County

### **Key Contact List**

The following administrative agencies will be notified of impending restrictions, dates, maps of restriction areas, etc. prior to releasing the information to the public. Enough information will be provided to them to allow them the ability to accurately answer questions from their local constituents.

## **Fire Departments**

- \* South Custer FD
- \* Mackay FD
- \* North Custer County FD
- \* Salmon FD
- \* Leadore FD
- \* Gibbonsville FD
- \* Elk Bend FD
- \* Lemhi County Rural FD

## **Law Enforcement Agencies**

- \* Custer County SD
- \* Lemhi County SD

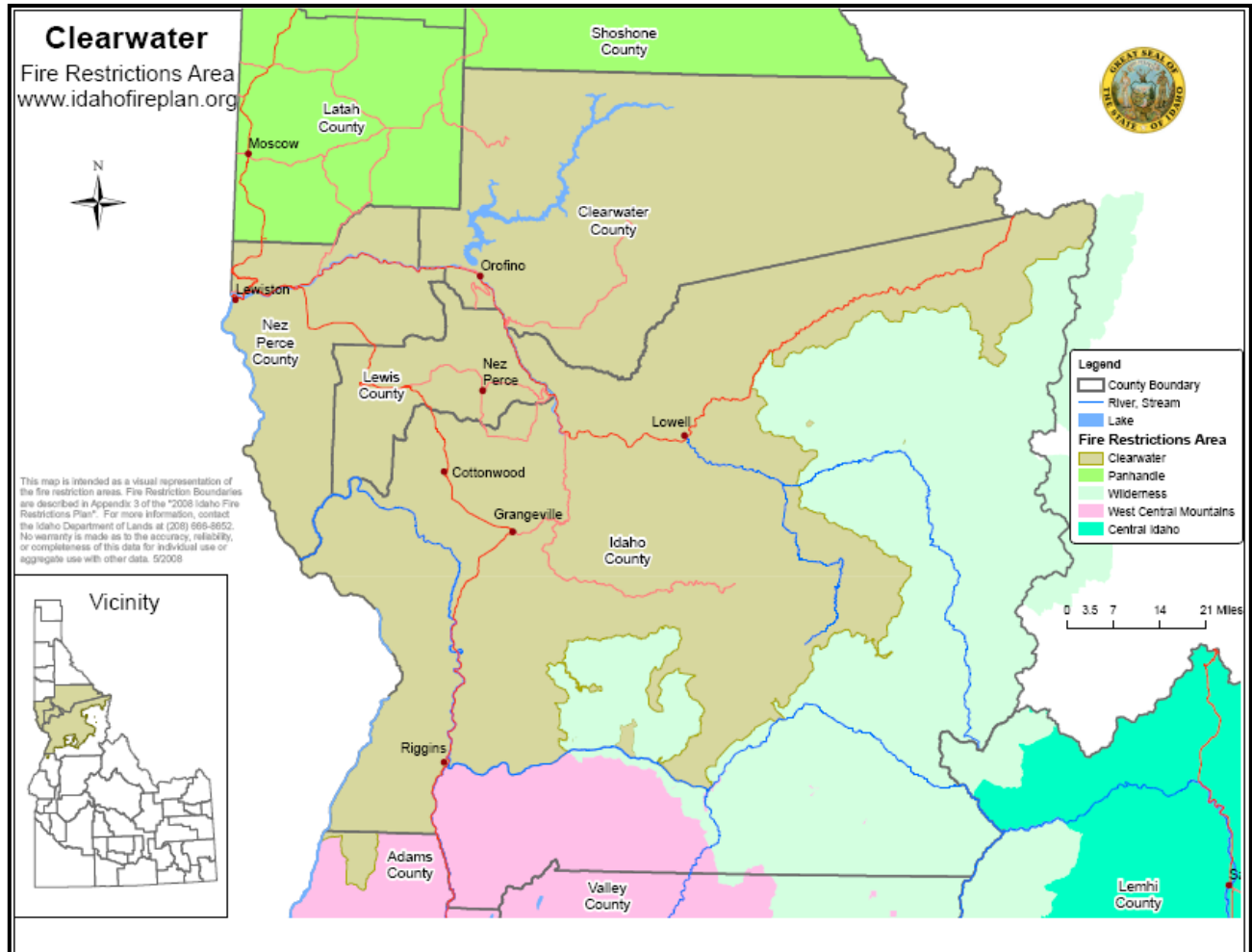
## **Media Plan**

The Media Plan for the Central Idaho Area will be the responsibility of the Salmon-Challis National Forest Public Information Officer. Objectives of the plan will be to keep the public and agency employees informed of present and predicted fire conditions and restrictions, in order to reduce the number of human-caused fire starts and potential threats to lives and property.

## **Responsibilities of the Lead Public Affairs Officer**

- Work with Area Fire Restrictions Coordinator on timing of initiating or rescinding restrictions and prevention personnel on problem identification to assure an organized approach.
- Assure that all of the internal personnel of the Land Management Agencies are informed of the restrictions, boundaries, etc.
- Keep well informed on present and predicted fire conditions and what their impacts may be.
- Design a systematic procedure for releasing information to all of the media (radio, television, print, etc.)
- Take all steps possible to assure that the public is informed of the restrictions, boundaries, etc.
- Inform all agencies listed in the Key Contact List of the restrictions prior to making the information public so they have answers to upcoming questions. Provide them with maps of the restriction areas, current fire behavior conditions and projections, and exact requirements of the restrictions.
- Weave the fire restrictions into the overall prevention program to optimize effectiveness. Try to design new and innovative methods of making the public aware of the fire problems and steps to reduce the fire impacts.

## APPENDIX 9: FIRE RESTRICTIONS AREA PLANS AND MAPS: CLEARWATER



## **CLEARWATER FIRE RESTRICTIONS AREA**

### **Area Fire Restrictions Coordinator**

The North Idaho Restrictions Coordinator will serve as the Area Fire Restrictions Coordinator representing the Public Land Agencies with jurisdiction in this area.

### **Fire Restrictions Evaluation Guidelines**

The following guidelines will be used to assist in determining when to consider initiating or rescinding restrictions. The weather related factors will be taken from RAWs and/or manual weather stations that best represent the conditions in the Clearwater Restriction Area:

- ☐ 1,000 hr. Time Lag Fuel Moisture Content is 12 percent or less.
- ☐ Three-day mean Energy Release Component (ERC) is at the 90th percentile or above.
- ☐ Live Fuel Moisture Content is 75 percent or less.
- ☐ Fire Danger Rating Adjective Class is at very high or extreme.
- ☐ Area is receiving high occurrence of human-caused fire starts or the risk is predicted to increase.
- ☐ Adverse fire weather conditions and risks are predicted to continue.

#### **Stage I**

If at least three of the above conditions are met, consider a Stage I restriction.

#### **Stage II**

Consider initiating a Stage II restriction after a Stage I restriction has been in effect and four or more of the above conditions are met.

### **Area Land Management Decision Group**

The following Public Land Management Administrators will be advised of present and predicted fire conditions and risks from information listed in the Evaluation Guidelines above by the Area Fire Restrictions Coordinator. Jointly, they will discuss the need for initiating or removing restrictions, timing, and make decisions if these actions are warranted. To avoid confusion to the public, a majority of the agencies must agree that the actions are necessary before they will be initiated for the area. After coming to agreement, each agency will be responsible for completing the written documentation and initiating the notification procedures required by law to legalize the restrictions within their jurisdiction.

- |   |                             |
|---|-----------------------------|
| * Clearwater NF                                     | * Cottonwood District - BLM |
| * Nez Perce NF                                      | * Craig Mountain Area - IDL |
| * Wallowa-Whitman NF                                | * Maggie Creek Area - IDL   |
| * Clearwater Area – IDL                             | * Nez Perce Tribe           |
| * Clearwater-Potlatch Timber Protective Association |                             |

### **Key Contact List**

The following administrative agencies will be notified of the impending restrictions and provide maps of the restriction areas, reasoning for going into restrictions, present fire conditions, etc., prior to releasing the information to the public. Enough information will be provided to them to allow them the ability to accurately answer questions from their local constituents. Fire Department contacts will be initiated by the Fire Manager on IDL's Maggie Creek Area.

## **Fire Departments**

- |                        |                                      |                            |
|------------------------|--------------------------------------|----------------------------|
| * Big Canyon Rural FD  | * Harpster VFD                       | * Ridge Runners FD         |
| * BPC VRFD             | * Kamiah City/Rural FPD              | * Riggins City/Rural FD    |
| * Carrot Ridge VFD     | * Keuterville Cowboy Wildland FF     | * Salmon River RFD         |
| * Cottonwood RFD       | * Kooskia FD                         | * Stites FD                |
| * Culdesac FD          | * Lenore RFD                         | * Sunnyside RFD            |
| * Elk City VFD         | * Nez Perce County FD                | * Twin Ridge RFD           |
| * Evergreen RFD        | * Nez Perce Rural FPD                | * Upper Fords Creek RFD    |
| * Glenwood-Caribel VFD | * North Idaho Correction Institution | * Weippe RFD               |
| * Grangeville RFD      | * Orofino Fire Dept                  | * White Bird City/Rural FD |
| * Grangemont RFD       | * Pierce VFD                         | * Winchester Rural VFD     |

## **Law Enforcement Agencies**

- |                       |   |
|-----------------------|---|
| * Lewis County SO     | * Idaho County SO                         |
| * Nez Perce County SO | * Clearwater County SO                    |
| * Latah County SO     | * Clearwater/Nez Perce LEO Patrol Captain |

## **State Agencies**

- |  |                                      |
|--|--------------------------------------|
| * Idaho Department of Parks & Recreation | * Idaho Department of Transportation |
| * Bureau of Homeland Security            | * Idaho Department of Lands          |
| * Idaho Department of Fish & Game        |                                      |

## **Other Federal Agencies**

- |                              |                      |
|------------------------------|----------------------|
| * US Fish & Wildlife Service | * Bitterroot NF      |
| * Bureau of Reclamation      | * Nez Perce NF       |
| * US Army Corps of Engineers | * Wallowa-Whitman NF |

## **Media Plan**

The North Idaho Restrictions Coordinator will take the lead for coordinating information release with the Public Affairs Officers from the Clearwater and Nez Perce National Forests, the Idaho Department of Lands, and the BLM Cottonwood District. The North Idaho Restrictions Coordinator will work closely with the Public Affairs Officers of the other agencies or units within the Decision Group to provide a unified and consistent message. The unit Public Affairs Officers will make the media contacts to the outlets within their spheres of influence. Objectives of the Media Plan are to keep the public and agency employees informed of present and predicted fire conditions and restrictions in order to reduce the number of human-caused starts.

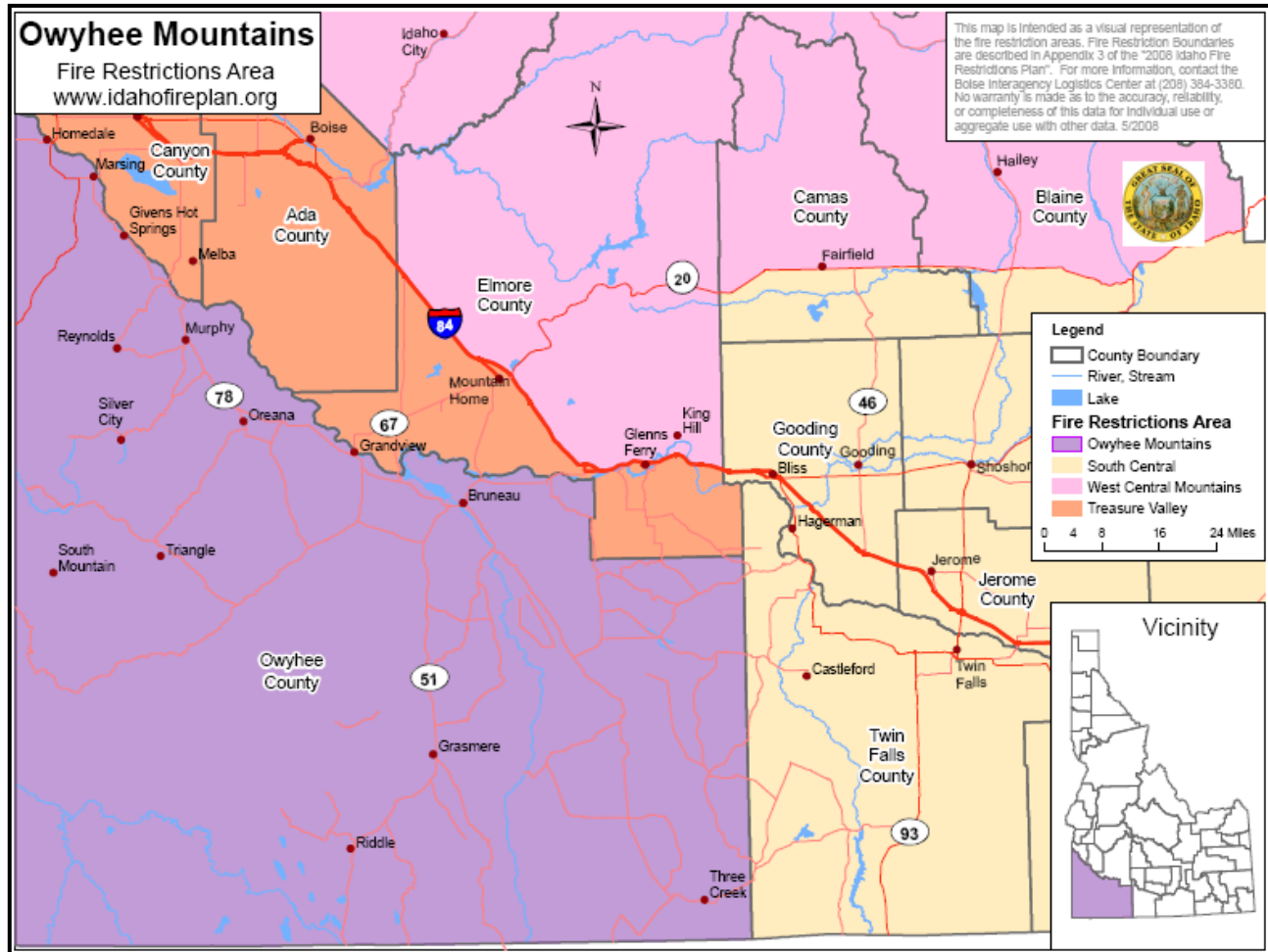
## **Responsibilities of the Lead Public Affairs Officer**

- Work with the Area Fire Restrictions Coordinator on timing of initiating or rescinding restrictions and prevention personnel on problem identification to assure an organized approach.
- Assure that all of the internal personnel of the Land Management Agencies are informed of the restrictions, boundaries, reasoning, etc.
- Design a systematic procedure for releasing information to all of the media (radio, print, television, etc.).
- Take all steps possible to assure that the public is informed of the restrictions, boundaries, etc.



- Inform all agencies listed in the Key Contact list of the restrictions prior to making the information public so they have answers to upcoming questions. Provide them with maps of the restriction area(s), current and predicted fire conditions, and the exact requirements of the restrictions.
- Weave the fire restrictions into the overall prevention program to optimize effectiveness.
- Work with the Public Affairs Officers of the agencies and units within the Decision Group to develop new and innovative methods of making the public aware of fire problems as well as steps to reduce fire impacts.

## APPENDIX 9: FIRE RESTRICTIONS AREA PLANS AND MAPS: OWYHEE MOUNTAINS



## **OWYHEE MOUNTAINS FIRE RESTRICTIONS AREA**

### **Area Fire Restrictions Coordinator**

The Boise Dispatch Center Manager will serve as the Area Fire Restrictions Coordinator representing the Public Land Agencies with jurisdiction in this area. The two Assistant Center Managers will serve as alternate Area Fire Restrictions Coordinators.

### **Fire Restrictions Evaluation Guidelines**

The following guidelines will be used to assist in determining when to consider initiating or rescinding restrictions. The weather related factors will be taken from RAWs and/or manual weather stations that best represent the conditions in the Owyhee Mountains Area:

- ☐ 1,000 hr. Time Lag Fuel Moisture Content is 12 percent or less.
- ☐ Three-day mean Energy Release Component (ERC) is at the 90th percentile or above.
- ☐ Live Fuel Moisture Content is 75 percent or less.
- ☐ Fire Danger Rating Adjective Class is at very high or extreme.
- ☐ Area is receiving high occurrence of human-caused fire starts or the risk is predicted to increase.
- ☐ Adverse fire weather conditions and risks are predicted to continue.

#### **Stage I**

If at least three of the above conditions are met, consider a Stage I restriction.

#### **Stage II**

Consider initiating a Stage II restriction after a Stage I restriction has been in effect and four or more of the above conditions are met.

### **Area Land Management Decision Group**

The following Public Land Management Administrators will be advised of present and predicted fire conditions and risks from information listed in the Evaluation Guidelines above by the Area Fire Restrictions Coordinator. Jointly, they will discuss the need for initiating or removing restrictions, timing, and make decisions if these actions are warranted. To avoid confusion to the public, a majority of the agencies must agree that the actions are necessary before they will be initiated for the area. After coming to agreement, each agency will be responsible for completing the written documentation and initiating the notification procedures required by law to legalize the restrictions within their jurisdiction.

\* Boise District – BLM

\* Idaho Department of Lands

\* Twin Falls District – BLM

### **Key Contact List**

The following administrative agencies will be notified of the impending restrictions and provided maps of the restriction areas, reasoning for going into restrictions, present fire conditions, etc., prior to releasing the information to the public. Enough information will be provided to them to allow them the ability to accurately answer questions from their local constituents.

## **Fire Departments**

- \* Bruneau FD
- \* Buhl FD
- \* Castleford FD
- \* Glenss Ferry/King Hill FD
- \* Hagerman FD
- \* Homedale FD
- \* Marsing FD
- \* Silver City Fire and Rescue, Inc.

## **Law Enforcement Agencies**

- \* Canyon County SD
- \* Elmore County SD
- \* Idaho State Police
- \* Owyhee County SD
- \* Twin Falls County SD

## **State Agencies/Local Agencies**

- \* Bureau of Homeland Security
- \* Idaho Department of Fish & Game
- \* Owyhee County Road & Bridge
- \* Idaho Department of Parks & Recreation-Three Island Park
- \* Idaho Department of Transportation
- \* Owyhee County Commissioners

## **Other Federal Agencies**

- \* US Bureau of Reclamation Swan Falls Dam
- \* Deer Flat National Wildlife Refuge
- \* Duck Valley Indian Reservation - BIA
- \* Mountain Home AFB Fire Department

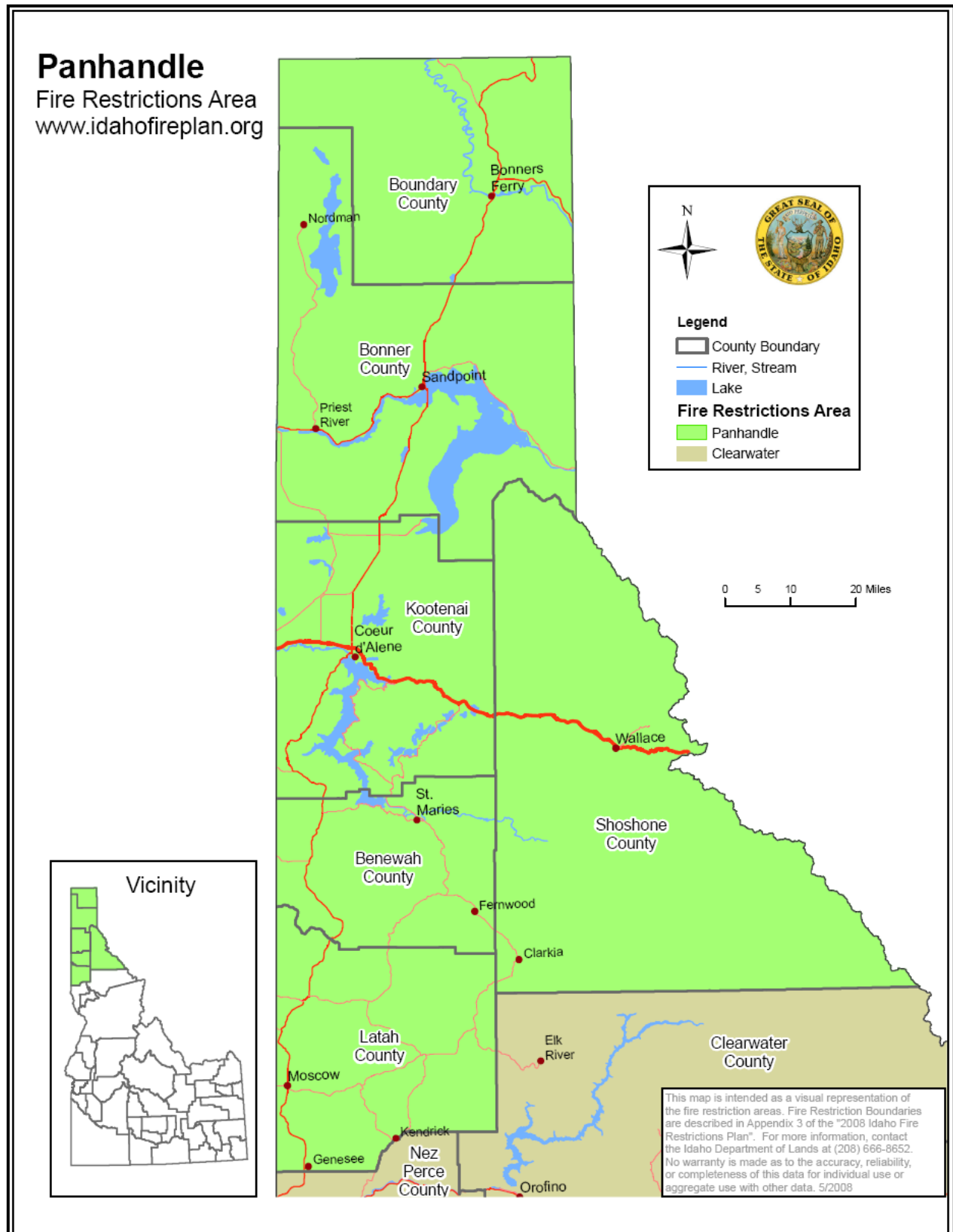
## **Media Plan**

The Boise District BLM Fire Mitigation and Education Specialist will take the lead for coordinating information release with the Public Affairs Officers from the Idaho Department of Lands, the Twin Falls District BLM, and the Boise National Forest. The alternate Lead Public Affairs Officer will be the Idaho Department of Lands Fire Warden. The Lead Public Affairs Officer will work closely with the Area Fire Restrictions Coordinator and Public Affairs Officers of the other agencies or units within the Decision Group to provide a unified and consistent message. The unit Public Affairs Officers will make the media contacts to the outlets within their spheres of influence. Objectives of the Media Plan are to keep the public and Agency employees informed of present and predicted fire conditions and restrictions in order to reduce the number of human-caused starts.

## **Responsibilities of the Lead Public Affairs Officer**

- Work with the Area Fire Restrictions Coordinator on timing of initiating or rescinding restrictions and Prevention Personnel on problem identification to assure an organized approach.
- Assure that all of the internal personnel of the Land Management Agencies are informed of the restrictions, boundaries, reasoning, etc.
- Design a systematic procedure for releasing information to all of the media (radio, print, television, etc.).
- Take all steps possible to assure that the public is informed of the restrictions, boundaries, etc.
- Inform all agencies listed in the Key Contact list of the restrictions prior to making the information public so they have answers to upcoming questions. Provide them with maps of the restriction area(s), current and predicted fire conditions, and the exact requirements of the restrictions.
- Integrate the fire restrictions into the overall prevention program to optimize effectiveness.
- Work with the Public Affairs Officers of the agencies and units within the Decision Group to develop new and innovative methods of making the public aware of fire problems as well as steps to reduce fire impacts.

## APPENDIX 9: FIRE RESTRICTIONS AREA PLANS AND MAPS: PANHANDLE



## **PANHANDLE FIRE RESTRICTIONS AREA**

### **Area Fire Restrictions Coordinator**

The North Idaho Restrictions Coordinator will serve as the Area Fire Restrictions Coordinator representing the Public Land Agencies with jurisdiction in this area.

### **Fire Restriction Evaluation Guidelines**

The following guidelines will be used to assist in determining when to consider initiating or rescinding restrictions. The weather related factors will be taken from RAWS and/or manual weather stations that best represent the conditions in the Panhandle Restriction Area:

- [ ]** Energy Release Component and 10-day Energy Release Component forecast = Dryness Index.
- [ ]** Risk to firefighters and public safety.
- [ ]** Ongoing fire activity (number and size of fires) and suppression resource availability, including Incident Management Teams (IMTs).
- [ ]** Social, political, and economic impacts.
- [ ]** Increase or decrease in recreation use.

#### **Stage I**

If at least three of the above conditions are met consider a Stage I restriction.

#### **Stage II**

Consider initiating a Stage II restriction after a Stage I restriction has been in effect and four or more of the above conditions are met.

### **Area Land Management Decision Group**

The following Public Land Management Administrators will be advised of present and predicted fire conditions and risks from information listed in the Evaluation Guidelines above by the Area Fire Restrictions Coordinator. Jointly, they will discuss the need for initiating or removing restrictions, timing, and make decisions if these actions are warranted. To avoid confusion to the public, a majority of the agencies must agree that the actions are necessary before they will be initiated for the area. After coming to agreement, each agency will be responsible for completing the written documentation and initiating the notification procedures required by law to legalize the restrictions within their jurisdiction.

- \* Idaho Panhandle National Forests
- \* Coeur d'Alene Tribe
- \* Priest Lake Area - IDL
- \* Mica Area - IDL
- \* West St. Joe Area - IDL

- \* Coeur d'Alene District - BLM
- \* Kootenai Valley Area - IDL
- \* Pend Oreille Lake Area - IDL
- \* Cataldo Area - IDL
- \* Ponderosa Area - IDL

### **Key Contact List**

The following administrative agencies will be notified of the impending restrictions and provide maps of the restriction areas, reasoning for going into restrictions, present fire conditions, etc., prior to releasing the information to the public. Enough information will be provided to them to allow them the ability to accurately answer questions from their local constituents. Fire Department contacts will be initiated by the Fire Managers on IDL Areas.

## **Fire Departments**

- |                                  |                                 |                        |
|----------------------------------|---------------------------------|------------------------|
| * Bonners Ferry FD               | * Clark Fork Valley FD          | * Coeur d'Alene FD     |
| * Coolin-Cavanaugh Day FD        | * Curly Creek VFD               | * Deary Rural FD       |
| * East Side FD                   | * Emida FPD                     | * Fernwood Rural FPD   |
| * Genesee FD                     | * Hall Mountain VFA             | * Hauser Lake FD       |
| * Hope-East Hope FD              | * Kootenai County Fire & Rescue | * Mica-Kidd Island FPD |
| * Moscow Rural FD                | * Moyie Springs FD (City of)    | * Mullan Volunteer FD  |
| * Naples Volunteer FA            | * North Bench FD                | * N of the Narrows VFD |
| * Northern Lakes FD              | * Northside FPD                 | * Paradise Valley FD   |
| * Plummer-Gateway FPD            | * Potlatch Corp. SMC            | * Potlatch Rural FD    |
| * Prichard/Murray VFD            | * Priest River VFD              | * Sagle FD             |
| * Sam Owen FD                    | * Sandpoint FD                  | * Schweitzer FPD       |
| * Shoshone County FD #1, #2 & #3 | * South Boundary FPD            | * Spirit Lake FPD      |
| * St. Maries FPD                 | * Tensed Rural FD               | * Timberlake FPD       |
| * Troy Rural FD                  | * W. Pend Oreille FD            | * W. Priest Lake FD    |
| * Westside FD                    | * Worley FPD                    |                        |

## **Law Enforcement Agencies**

- |                      |                        |
|----------------------|------------------------|
| * Boundary County SO | * Bonner County SO     |
| * Benewah County SO  | * Kootenai County SO   |
| * Latah County SO    | * Clearwater County SO |
| * Shoshone County SO |                        |

## **State Agencies**

- |   |                                      |
|---|--------------------------------------|
| * Idaho Department of Parks & Recreation. | * Idaho Department of Transportation |
| * Bureau of Homeland Security             | * Idaho Department of Fish & Game    |
| * Idaho Department of Lands               |                                      |

## **Other Federal Agencies**

- |                              |                             |
|------------------------------|-----------------------------|
| * US Fish & Wildlife Service | * Idaho Panhandle NF (IPNF) |
| * US Bureau of Reclamation   | * Coeur d'Alene Tribe       |
| * US Army Corps of Engineers | * All Districts in the IPNF |

## **Media Plan**

The North Idaho Restrictions Coordinator will take the lead for coordinating information release with the Public Affairs Officers from the Idaho Panhandle National Forests, the Idaho Department of Lands, and the BLM Coeur d'Alene District. The North Idaho Restrictions Coordinator will work closely with the Public Affairs Officers of the other agencies or units within the Decision Group to provide a unified and consistent message. The unit Public Affairs Officers will make the media contacts to the outlets within their spheres of influence. Objectives of the Media Plan are to keep the public and Agency employees informed of present and predicted fire conditions and restrictions in order to reduce the number of human-caused starts.

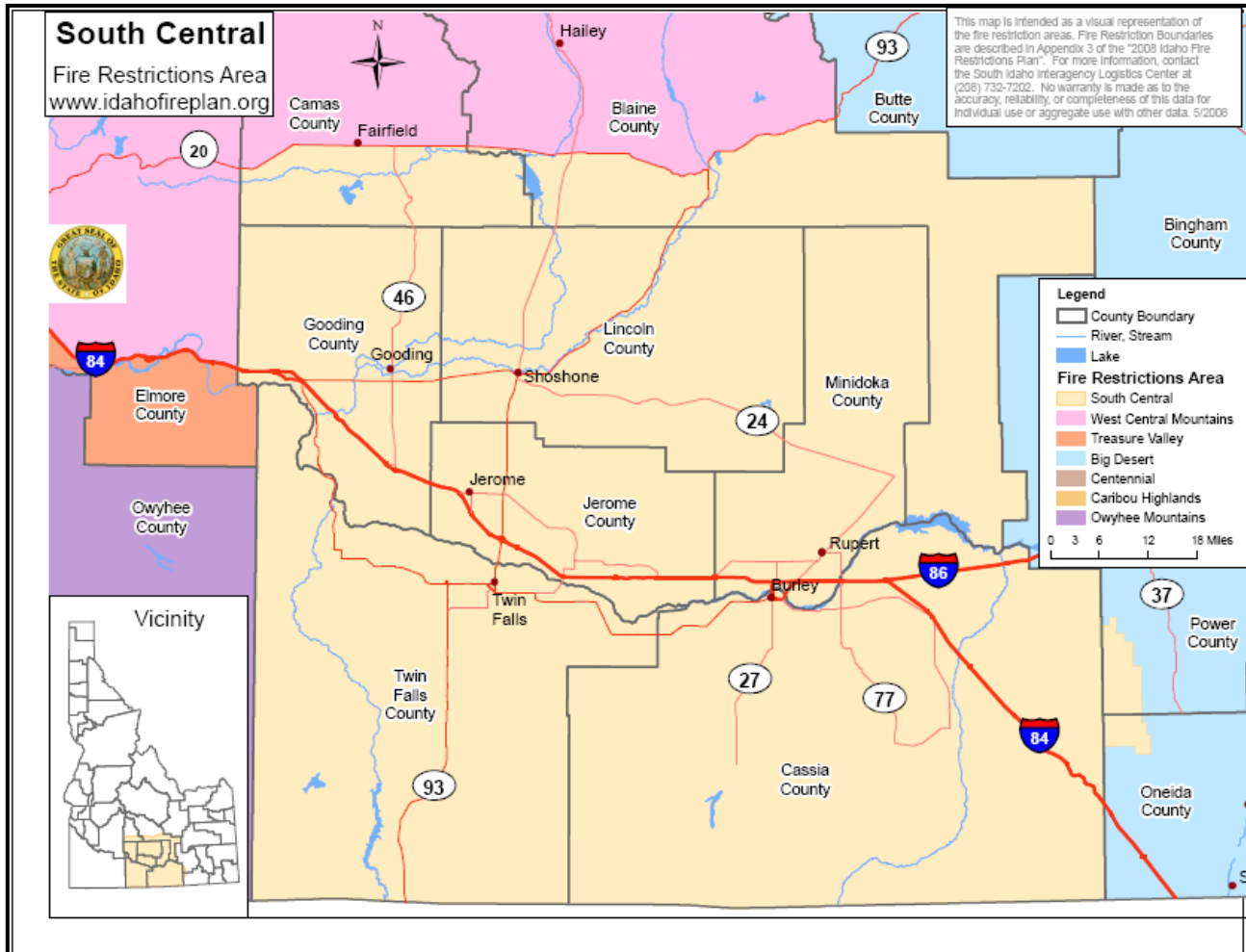
## **Responsibilities of the Lead Public Affairs Officer**

- Work with the Area Fire Restrictions Coordinator on timing of initiating or rescinding restrictions and prevention personnel on problem identification to assure an organized approach.

- Assure that all of the internal personnel of the Land Management Agencies are informed of the restrictions, boundaries, reasoning, etc.
- Design a systematic procedure for releasing information to all of the media (radio, print, television, etc.).
- Take all steps possible to assure that the public is informed of the restrictions, boundaries, etc.
- Inform all agencies listed in the Key Contact List of the restrictions prior to making the information public so they have answers to upcoming questions. Provide them with maps of the restriction area(s), current and predicted fire conditions, and the exact requirements of the restrictions.
- Weave the fire restrictions into the overall prevention program to optimize effectiveness.
- Work with the Public Affairs Officers of the agencies and units within the Decision Group to develop new and innovative methods of making the public aware of fire problems as well as steps to reduce fire impacts.



## APPENDIX 9: FIRE RESTRICTIONS AREA PLANS AND MAPS: SOUTH CENTRAL



## **SOUTH CENTRAL FIRE RESTRICTIONS AREA**

### **Area Fire Restrictions Coordinator**

The South Central Idaho Interagency Dispatch Center Manager will serve as the Area Fire Restrictions Coordinator representing public land agencies having jurisdiction within the South Central Zone. One of the two Assistant Center Managers will serve as the alternate Area Fire Restrictions Coordinator when necessary.

### **Fire Restrictions Evaluation Guidelines**

The following guidelines will be used to initiate or rescind restrictions. When environmental factors or the impact of commitment of resources to fire suppression (locally, geographically, or nationally) approach the guideline levels for Stage I or II fire restrictions should be considered for the entire area. Negotiation among the area agencies will be based on data taken from RAWs and manual weather stations throughout the restricted area that best represent conditions within the South Central Restriction Area:

- [ ] Burning Index is 85 or more for at least 48 hours.
- [ ] Live Fuel Moisture Content is 75 percent or less.
- [ ] Fire Danger Rating Adjective Class is very high or extreme.
- [ ] Commitment of resources to local, GACC, or national assignments limit adequate initial attack capability.
- [ ] Area is receiving high occurrence of human-caused fires or the risk is predicted to increase.
- [ ] Adverse fire weather conditions and risks are predicted to continue.

### **Stage 1**

If at least three of the above conditions are met, consider Stage 1 restrictions.

### **Stage 2**

Consider Stage 2 restrictions if Stage 1 restrictions have previously been in effect and four or more of the above conditions are met.

### **Land Management Decision Group**

Fire managers and the Area Fire Restrictions Coordinator (the Decision Group) will jointly discuss the need for initiating or removing restrictions and the timing of such restrictions. When a majority of the Decision Group agrees restrictions are necessary, all agencies within the South Central Restriction Area agree to initiate coordinated restrictions to avoid confusing the public. Further, the respective fire manager will notify their Agency Administrators of the decision to implement or rescind fire restrictions and each agency will complete the written documentation and initiate the notification procedures required by law to legalize the actions within their jurisdiction. The Area Fire Restrictions Coordinator will also work closely with the Lead Public Affairs Officers during discussions related to implementing or rescinding fire restrictions for the area.

### **Decision Group**

- |                           |                             |
|---------------------------|-----------------------------|
| * Twin Falls BLM District | * Fish & Wildlife Service   |
| * Sawtooth NF             | * Idaho Department of Lands |
| * National Parks Service  | * Bureau of Reclamation     |

## **Key Contact List**

The following administrative agencies will be notified of impending restrictions, dates, maps of restricted areas, etc., prior to releasing this information to the general public. Sufficient information will be provided to assist these agencies to accurately answer questions from their local constituents. It is the responsibility of the fire managers within the Decision Group to contact the members of the key contact group within their respective jurisdictions.

### **Fire Departments**

- |                            |                      |                           |
|----------------------------|----------------------|---------------------------|
| * American Falls FD        | * Jerome City FD     | * Rupert City Fire/Rescue |
| * ACE Fire Protection Unit | * Jerome Rural FD    | * Salmon Tract RFD        |
| * Albion RFD               | * Ketchum City FD    | * Shoshone Fire Dept.     |
| * Bellevue City FD         | * Ketchum RFD        | * Sun Valley FD           |
| * Bliss Rural FD           | * King Hill FD       | * Twin Falls FD           |
| * Boxelder Co. (UT) FD     | * Minidoka County FD | * Wendell FD              |
| * Buhl FD                  | * North Cassia Rural | * Wood River Rural FD     |
| * Camas County FD          | * Oakley FD          | * Wood River Fire/Rescue  |
| * Carey-Picabo FD          | * North Cassia Rural | * Wood River Rural FD     |
| * Dietrich FD              | * Oakley FD          | * Wendell FD              |
| * First Segregation FD     | * Raft River RFD     | * West Magic FD           |
| * Gooding FD .             | * Richfield FD       | * Wood River Fire/Rescue  |
| * Hailey City Fire Dept.   | * Rock Creek RFD     | * Wood River Fire/Rescue  |

### **Law Enforcement Agencies**

- |                            |                             |                              |
|----------------------------|-----------------------------|------------------------------|
| * Blaine Co. Sheriff Dept. | * Gooding. Sheriff Dept.    | * Minidoka Co. Sheriff Dept. |
| * Camas Co. Sheriff Dept.  | * Idaho State Police        | * Twin Falls. Sheriff Dept.  |
| * Cassia Co. Sheriff Dept. | * Jerome Co. Sheriff Dept.  | * Sircom                     |
| * Elmore Co. Sheriff Dept. | * Lincoln Co. Sheriff Dept. | * Owyhee Co. Sheriff Dept.   |

### **State Agencies**

- |  |                                      |
|--|--------------------------------------|
| * Idaho Department of Parks & Recreation | * Idaho Department of Transportation |
| * Idaho Department of Fish & Game        | * Bureau of Homeland Security        |
| * City of Rocks National Reserve         |                                      |

### **Other Federal Agencies**

- |                                   |                            |
|-----------------------------------|----------------------------|
| * Boise District BLM              | * Idaho Falls District BLM |
| * Elko District BLM               | * Salt Lake District BLM   |
| * Caribou-Targhee National Forest |                            |

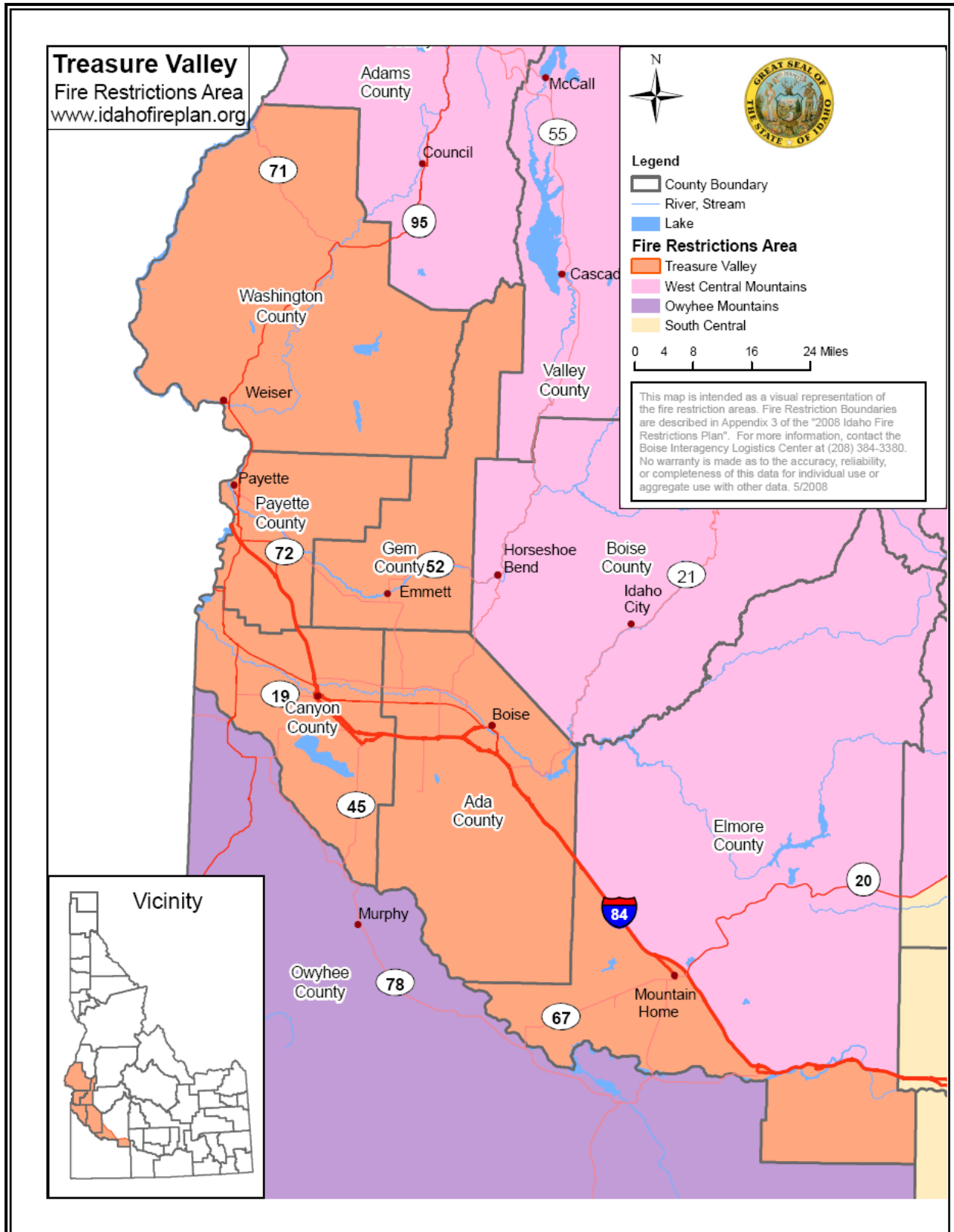
## **Media Plan**

The Twin Falls BLM Fire & Aviation and the Sawtooth Forest Public Affairs Officers will take the lead and coordinate information release with Public Affairs Officers from The Idaho Department of Lands, from adjoining BLM offices, and from the National Park Service. The Lead Public Affairs Officers will work closely with the Area Fire Restrictions Coordinator and the previously mentioned Public Affairs Officers to provide a unified and consistent message. Each agency Public Affairs Officer will make the appropriate media contacts within their respective area. Objectives of the Media Plan are to keep the public and agency employees informed of present and predicted fire conditions and restrictions and to reduce the number of human-caused fires.

## **Responsibilities of Lead Public Affairs Officers**

- Work with Area Fire Restrictions Coordinator on timing of initiating or rescinding restrictions to assure an organized approach.
- Coordinate with the Public Affairs Officers of Decision Group agencies.
- Assure all internal personnel of land management agencies are informed of the restrictions, boundaries, reasons, etc.
- Design a systematic procedure for releasing information to all media.
- Ensure agencies within the Key Contact Group are provided with maps of the restricted area(s) and exact restriction requirements.
- Work with Public Affairs Officers of the Decision Group agencies to design and implement new and innovative methods for public awareness of fire conditions and reduction of human caused fires.

## APPENDIX 9: FIRE RESTRICTIONS AREA PLANS AND MAPS: TREASURE VALLEY



## **TREASURE VALLEY FIRE RESTRICTIONS AREA**

### **Area Fire Restrictions Coordinator**

The Boise Dispatch Center Manager will serve as the Area Fire Restrictions Coordinator representing the Public Land Agencies with jurisdiction in this area. The two Assistant Center Managers will serve as alternate Area Fire Restrictions Coordinators.

### **Fire Restrictions Evaluation Guidelines**

The following guidelines will be used to assist in determining when to consider initiating or rescinding restrictions. The weather related factors will be taken from RAWs and/or manual weather stations that best represent the conditions in the Treasure Valley Restriction Area:

- ☐ 1,000 hr. Time Lag Fuel Moisture Content is 12 percent less.
- ☐ Three-day mean Energy Release Component (ERC) is at the 90th percentile or above.
- ☐ Live Fuel Moisture Content is 75 percent or less.
- ☐ Fire Danger Rating Adjective Class is at very high or extreme.
- ☐ Area is receiving high occurrence of human-caused fire starts or the risk is predicted to increase.
- ☐ Adverse fire weather conditions and risks are predicted to continue.

#### **Stage I**

If at least three of the above conditions are met consider a Stage I restriction.

#### **Stage II**

Consider initiating a Stage II restriction after a Stage I restriction has been in effect and four or more of the above conditions are met.

### **Area Land Management Decision Group**

The following Public Land Management Administrators will be advised of present and predicted fire conditions and risks from information listed in the Evaluation Guidelines above by the Area Fire Restrictions Coordinator. Jointly, they will discuss the need for initiating or removing restrictions, timing, and make decisions if these actions are warranted. To avoid confusion to the public, a majority of the agencies must agree that the actions are necessary before they will be initiated for the area. After coming to agreement, each agency will be responsible for completing the written documentation and initiating the notification procedures required by law to legalize the restrictions within their jurisdiction.

- \* Boise District - BLM
- \* Boise NF

- \* Idaho Department of Lands
- \* Twin Falls District – BLM

### **Key Contact List**

The following administrative agencies will be notified of the impending restrictions and provided maps of the restriction areas, reasoning for going into restrictions, present fire conditions, etc. prior to releasing the information to the public. Enough information will be provided to them to allow them the ability to accurately answer questions from their local constituents.

#### **Fire Departments**

- |                               |                               |                 |
|-------------------------------|-------------------------------|-----------------|
| * Eagle FD.                   | * Fruitland FD                | * Boise City FD |
| * Grandview FD                | * Gem County Fire District #1 | * Homedale FD   |
| * Gem County Fire District #2 | * King Hill/Glens Ferry FD    | * Marsing FD    |

- \* New Plymouth FD
- \* Parma FD
- \* Star FD
- \* Upper Deer Flat FD
- \* Melba FD

- \* Mountain Home AFB FD
- \* Oasis FD
- \* Caldwell FD
- \* Weiser City FD
- \* North Ada County Fire and Rescue

- \* Notus FD
- \* Payette FD
- \* Emmett FD
- \* Indian Valley FD

### **Law Enforcement Agencies**

- \* Ada County SD
- \* Canyon County SD
- \* Elmore County SD

- \* Gem County SD
- \* Idaho State Police
- \* Payette County SD

### **State Agencies/Local Agencies**

- \* Ada County Highway District
- \* Bureau of Homeland Security
- \* Canyon County Hwy Dist #3
- \* Elmore County Hwy Dist
- \* Gem County Hwy Dist
- \* Golden Gate Hwy Dist #3
- \* Idaho Department of Fish and Game

- \* Idaho Department of Parks & Recreation
- \* Idaho Department of Transportation
- \* Nampa Hwy Dist #1
- \* Notus-Parma Hwy Dist #2
- \* Payette County Road & Bridge
- \* US Bureau of Reclamation Swan Falls Dam
- \* Washington County Road & Bridge

### **Other Federal Agencies**

- \* All Districts BOF, PAF, STF and SCF
- \* Bureau of Reclamation
- \* Army Corps of Engineers

- \* Deer Flat National Wildlife Refuge
- \* US Fish and Wildlife Service

### **Military**

- \* Gowen Field - Idaho National Guard

- \* Mountain Home AFB

## **MEDIA PLAN**

The Boise District BLM Fire Mitigation and Education Specialist will take the lead for coordinating information release with the Public Affairs Officers from the Idaho Department of Lands, the Twin Falls District BLM, and the Boise National Forest. The alternate Lead Public Affairs Officer will be the Idaho Department of Lands Fire Warden. The Lead Public Affairs Officer will work closely with the Area Fire Restrictions Coordinator and Public Affairs Officers of the other agencies or units within the Decision Group to provide a unified and consistent message. The unit Public Affairs Officers will make the media contacts to the outlets within their spheres of influence. Objectives of the Media Plan are to keep the public and Agency employees informed of present and predicted fire conditions and restrictions in order to reduce the number of human-caused starts.

### **Responsibilities of the Lead Public Affairs Officer**

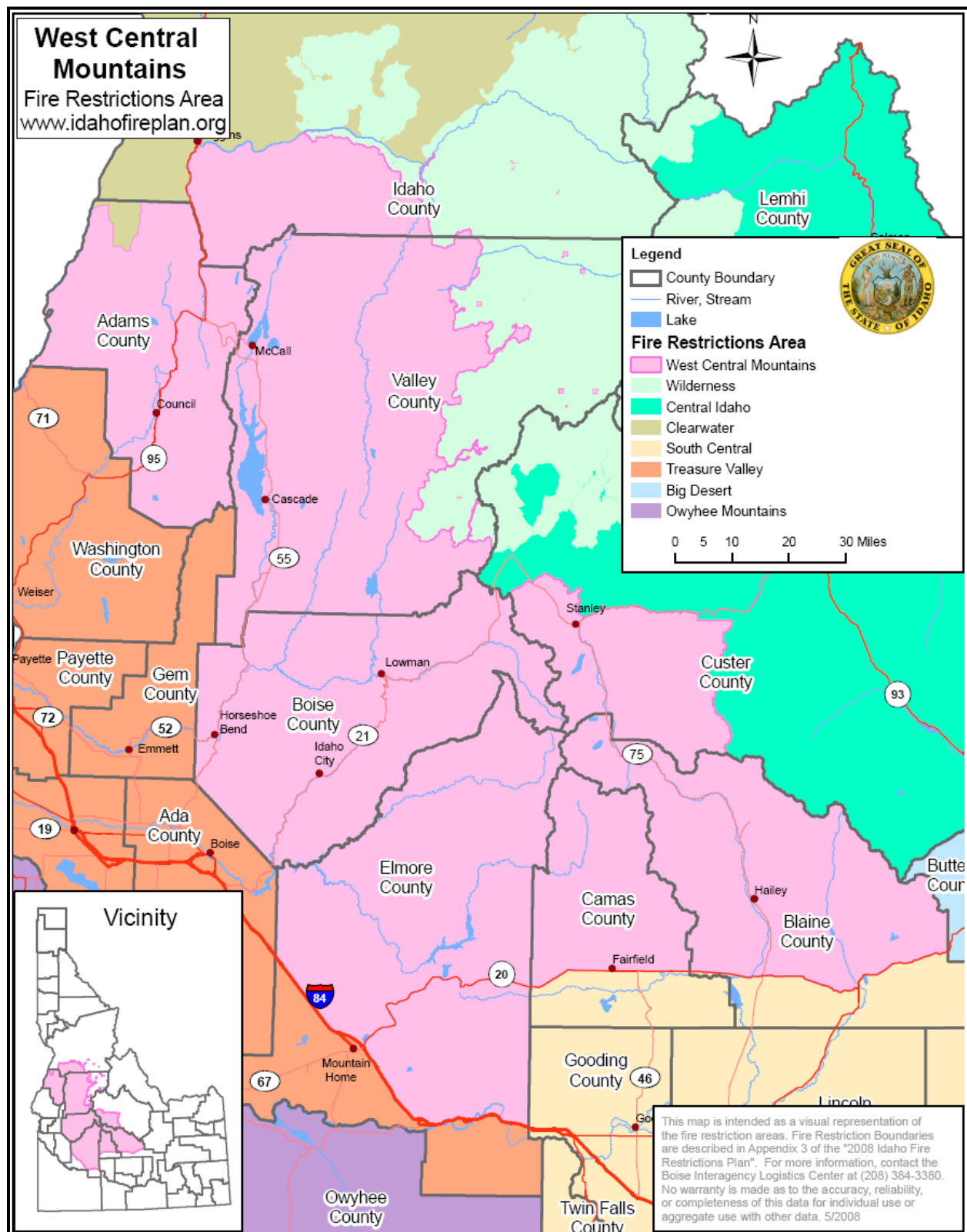
Work with the Area Restriction Coordinator on timing of initiating or rescinding restrictions and prevention personnel on problem identification to assure an organized approach.

- Assure that all of the internal personnel of the Land Management Agencies are informed of the restrictions, boundaries, reasoning, etc.
- Design a systematic procedure for releasing information to all of the media (radio, print, television, etc.).
- Take all steps possible to assure that the public is informed of the restrictions, boundaries, etc.

- Inform all agencies listed in the Key Contact List of the restrictions prior to making the information public so they have answers to upcoming questions. Provide them with maps of the restriction area(s), current and predicted fire conditions, and the exact requirements of the restrictions.
- Integrate the fire restrictions into the overall prevention program to optimize effectiveness.
- Work with the Public Affairs Officers of the agencies and units within the Decision Group to develop new and innovative methods of making the public aware of fire problems as well as steps to reduce fire impacts.



## APPENDIX 9: FIRE RESTRICTIONS AREA PLANS AND MAPS: WEST CENTRAL MOUNTAINS



## **WEST CENTRAL MOUNTAINS FIRE RESTRICTIONS AREA**

### **Area Fire Restrictions Coordinator**

The Boise Dispatch Center Manager will serve as the Area Fire Restrictions Coordinator representing the Public Land Agencies with jurisdiction in this area. The two Assistant Center Managers will serve as alternate Area Fire Restrictions Coordinators.

### **Fire Restriction Evaluation Guidelines**

The following guidelines will be used to assist in determining when to consider initiating or rescinding restrictions. The weather-related factors will be taken from RAWs and/or manual weather stations that best represent the conditions in the West Central Mountains Restriction Area:

- ☐ 1,000 hr. Time Lag Fuel Moisture Content is 12 percent or less.
- ☐ Three-day mean Energy Release Component (ERC) is at the 90th percentile or above.
- ☐ Live Fuel Moisture Content is 75% or less.
- ☐ Fire Danger Rating Adjective Class is at very high or extreme.
- ☐ Area is receiving high occurrence of human-caused fire starts or the risk is predicted to increase.
- ☐ Adverse fire weather conditions and risks are predicted to continue.

#### **Stage I**

If at least three of the above conditions are met consider a Stage I restriction.

#### **Stage II**

Consider initiating a Stage II restriction after a Stage I restriction has been in effect and four or more of the above conditions are met.

### **Area Land Management Decision Group**

The following Public Land Management Administrators will be advised of present and predicted fire conditions and risks from information listed in the Evaluation Guidelines above by the Area Fire Restrictions Coordinator. Jointly, they will discuss the need for initiating or removing restrictions, timing, and make decisions if these actions are warranted. To avoid confusion to the public, a majority of the agencies must agree that the actions are necessary before they will be initiated for the area. After coming to agreement, each agency will be responsible for completing the written documentation and initiating the notification procedures required by law to legalize the restrictions within their jurisdiction.

- |                                |  |
|--------------------------------|--|
| * Boise District - BLM         | * Payette NF                                   |
| * Boise NF                     | * Sawtooth NF                                  |
| * Coeur d'Alene District - BLM | * Southern Idaho Timber Protective Association |
| * Idaho Department of Lands    | * Twin Falls District – BLM                    |

### **Key Contact List**

The following administrative agencies will be notified of the impending restrictions and provided maps of the restriction areas, reasoning for going into restrictions, present fire conditions, etc., prior to releasing the information to the public. Enough information will be provided to them to allow them the ability to accurately answer questions from their local constituents.

### **Fire Departments**

- |                          |                           |                         |
|--------------------------|---------------------------|-------------------------|
| * Atlanta FD             | * Garden Valley Rural FD  | * North Fork FD         |
| * Bellview FD            | * Grandjean VFD           | * Placerville VFD       |
| * Carey Rural FD         | * Hailey FD               | * Robie Creek VFD       |
| * Cascade City FD        | * Horseshoe Bend City FD  | * Salmon River Rural FD |
| * Cascade Rural FD       | * Horseshoe Bend Rural FD | * Centerville FD        |
| * Idaho City VFD         | * South Custer County FD  | * Clayton FD            |
| * Ketchum FD             | * Sun Valley FD           | * Clear Creek VFD       |
| * Leadore VFD            | * Valley of the Pines VFD | * Council VFD           |
| * Lemhi County RFD       | * Wilderness Ranch VFD    | * Donnelly FD           |
| * Lowman VFD             | * Wood River Rural FPD    | * Donnelly Rural FPD    |
| * McCall Rural FPD       | * Yellowpine FD           | * Elk Bend FPD          |
| * New Meadows RFD.       | * Sawtooth Valley RFD     | * Fairfield FD          |
| * North Custer County FD |                           |                         |

### **Law Enforcement Agencies**

- |                    |                      |
|--------------------|----------------------|
| * Adams County SD  | * Elmore County SD   |
| * Blaine County SD | * Idaho County SD    |
| * Boise County SD  | * Idaho State Police |
| * Camas County SD  | * Valley County SD   |

### **State Agencies**

- |                                     |  |
|-------------------------------------|--|
| * Bureau of Homeland Security       | * Idaho Department of Parks & Recreation |
| * Idaho Department of Fish and Game | * Idaho Department of Transportation     |

### **Other Federal Agencies**

- |                                       |                                |
|---------------------------------------|--------------------------------|
| * All Districts BOF, PAF, STF and SCF | * US Fish and Wildlife Service |
| * Bitterroot NF                       | * Army Corps of Engineers      |
| * Bureau of Reclamation               | * Wallowa-Whitman NF           |
| * Nez Perce NF                        |                                |

### **Media Plan**

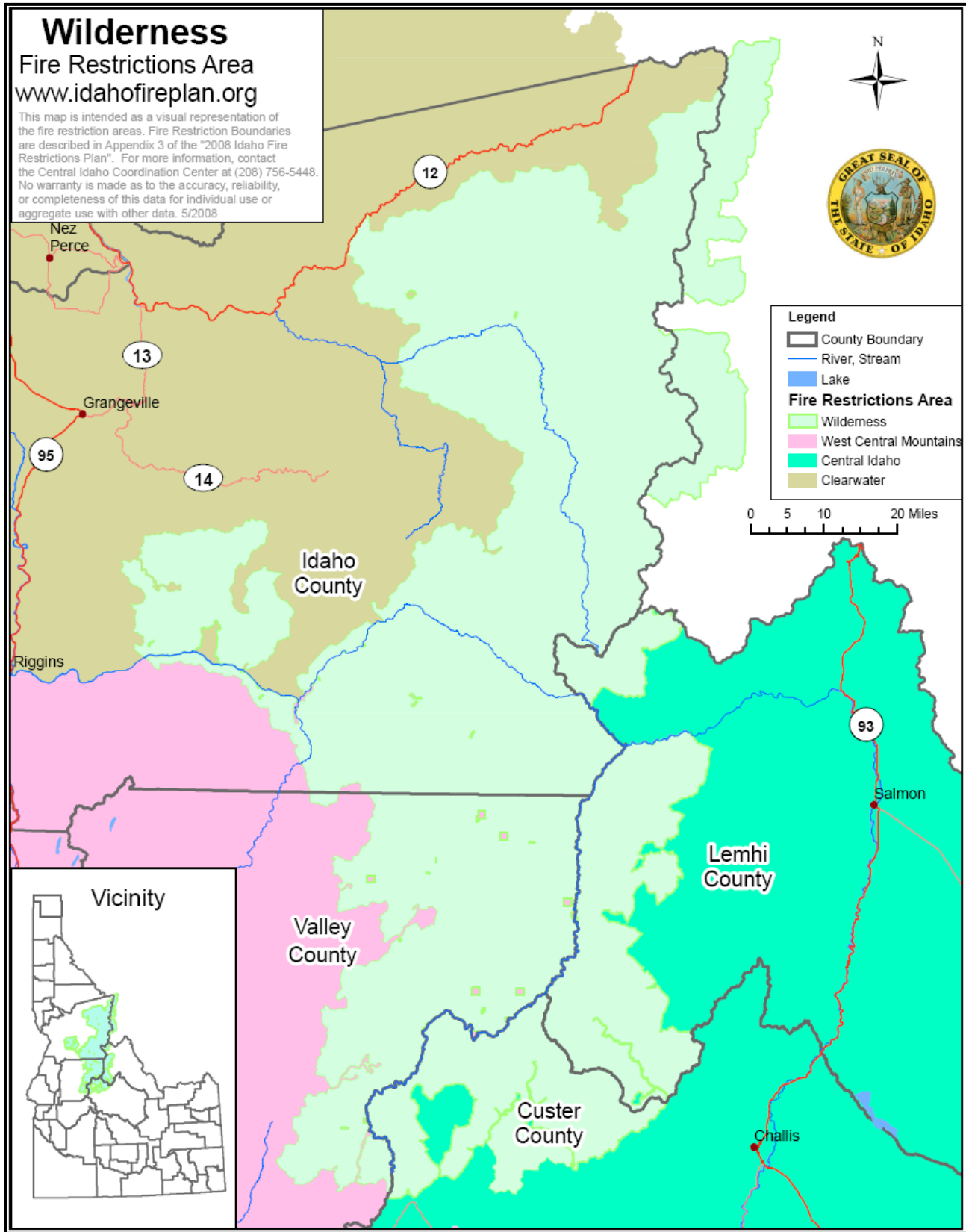
The Boise National Forest Public Affairs Officer will take the lead for coordinating information release with the Public Affairs Officers from the Idaho Department of Lands, the three BLM Districts, and the four National Forests. The alternate Lead Public Affairs Officer will be the Boise District BLM Fire Mitigation and Education Specialist. The Lead Public Affairs Officer will work closely with the Area Fire Restrictions Coordinator and Public Affairs Officers of the other agencies or units within the Decision Group to provide a unified and consistent message. The unit Public Affairs Officers will make the media contacts to the outlets within their spheres of influence. Objectives of the Media Plan are to keep the public and agency employees informed of present and predicted fire conditions and restrictions in order to reduce the number of human-caused starts.

### **Responsibilities of the Lead Public Affairs Officer**

- Work with the Area Fire Restrictions Coordinator on timing of initiating or rescinding restrictions and prevention personnel on problem identification to assure an organized approach.
- Assure that all of the internal personnel of the Land Management Agencies are informed of the restrictions, boundaries, reasoning, etc.
- Design a systematic procedure for releasing information to all of the media (radio, print, television, etc.).
- Take all steps possible to assure that the public is informed of the restrictions, boundaries, etc.

- Inform all agencies listed in the Key Contact List of the restrictions prior to making the information public so they have answers to upcoming questions. Provide them with maps of the restriction area(s), current and predicted fire conditions, and the exact requirements of the restrictions.
- Integrate the fire restrictions into the overall prevention program to optimize effectiveness.
- Work with the Public Affairs Officers of the agencies and units within the Decision Group to develop new and innovative methods of making the public aware of fire problems as well as steps to reduce fire impacts.

## APPENDIX 9: FIRE RESTRICTIONS AREA PLANS AND MAPS: WILDERNESS



## **WILDERNESS FIRE RESTRICTIONS AREA**

### **Area Fire Restrictions Coordinator**

The Central Idaho Coordination Center Manager, will serve as the Area Fire Restrictions Coordinator representing the Public Land Agencies with jurisdiction within Wilderness Restriction Area.

### **Fire Restrictions Evaluation Guidelines**

The following guidelines will be used to determine initiating or rescinding restrictions. When environmental factors or the impact of the commitment of resources to fire suppression (locally, geographically, or nationally) approach the guideline levels for Stage I or Stage II a fire restriction should be considered for the whole area. Negotiation among the agencies within the area will be based on data taken from RAWs throughout the restriction area that best represent conditions in the Wilderness Restriction Area.

- ☐ 1,000 hr. Time Lag Fuel Moisture Content is 12 percent or less.
- ☐ Three-day mean Energy Release Component (ERC) is at the 90th percentile or above.
- ☐ Live Fuel Moisture Content is 75 percent or less.
- ☐ Fire Danger Rating Adjective Class is at very high or extreme.
- ☐ Commitment of resources to local, GACC or National assignment limits adequate initial attack capability.
- ☐ Area is receiving human-caused fire starts or the risk is predicted to increase.
- ☐ Adverse fire weather conditions and risks are predicted to continue.

#### **Stage I**

If at least three of the above conditions are met, consider a Stage I restriction.

#### **Stage II**

Consider initiating a Stage II restriction after a Stage I restriction has been in effect and four or more of the above conditions are met. Generally the Wilderness Fire Restriction Area will not enter Stage II.

### **Wilderness Area Land Management Decision Group**

The following Public Land Management Agency Administrators will be advised by their fire managers of present and predicted fire conditions and risks from information listed in the Evaluation Guidelines above during discussion with the Area Fire Restrictions Coordinator. Agency administrators, fire managers and the Area Fire Restrictions Coordinator will jointly discuss the need for initiating or removing restrictions and the timing of restrictions. The decision group has the flexibility to initiate restrictions as needed based on individual wilderness fire severity conditions. When a majority of the decision group agencies agree that restrictions are necessary, all agencies within the Wilderness Restriction Area agree to initiate coordinated restrictions for the area to avoid confusing the public. The Area Fire Restrictions Coordinator will notify the Idaho Fire Restrictions Plan Coordinator of the intention to implement or rescind fire restrictions. After a decision is made to implement or rescind fire restrictions each Agency will complete the written documentation and initiate the notification procedures required by law to legalize the actions within their jurisdictions.

Specifically, the Area Fire Restrictions Coordinator will work through the Fire Managers of the agencies and units within the Decision Group. The respective fire managers have the responsibility to brief and work with their Line Officers regarding the conditions and the potential need for restrictions, using the evaluation guidelines as the framework for discussion. The Area

Fire Restrictions Coordinator will also work closely with the Lead Public Affairs Officer during discussions related to implementing or rescinding fire restrictions for the area.

- \* Salmon-Challis NF
- \* Clearwater NF
- \* Bitterroot NF

- \* Payette NF
- \* Nez Perce NF

### **Key Contact List**

#### **Law Enforcement Agencies**

- \* Bitterroot NF
- \* Nez Perce NF
- \* Salmon-Challis NF

- \* Boise NF
- \* Payette NF

#### **Sheriffs Departments**

- \* Custer County
- \* Lemhi County
- \* Valley County

- \* Idaho County
- \* Ravalli County

#### **State Agencies**

- \* Idaho Department of Lands
- \* Idaho Department of Fish & Game

#### **County Commissioners**

- \* Custer County
- \* Lemhi County
- \* Valley County

- \* Idaho County
- \* Ravalli County
- \* Clearwater County

#### **Others**

- \* Idaho Outfitters & Guide Association

### **Media Plan**

The Salmon-Challis National Forest Public Affairs Officer will take the lead for coordinating information release with The Public Affairs Officers from the other four National Forests. The lead Public Affairs Officer will work closely with the Area Fire Restrictions Coordinator and Public Affairs Officers of the other agencies or units within the Decision Group to provide a unified and consistent message. The unit Public Affairs Officers will make the media contacts to the outlets within their spheres of influence. Objectives of the Media Plan are to keep the public and agency employees informed of present and predicted fire conditions and restrictions in order to reduce the number of human-caused fire starts.

### **Responsibilities of Lead Public Affairs Officer**

- Work with Area Fire Restrictions Coordinator on timing of initiating or rescinding restrictions to assure an organized approach.
- Coordinate with the Public Affairs Officers of all the agencies and units within the decision group.
- Assure that all of the internal personnel of the Land Management Agencies are informed about the restrictions, boundaries, reasons, etc.
- Design a systematic procedure for releasing information to all of the media.
- Ensure that agencies within the Key Contact List are provided with maps of the restriction area and exact requirements of the restrictions.
- Work with the Public Affairs Officers of the agencies and units within the Decision Group to design new and innovative methods of making the public aware of fire conditions and steps to reduce human-caused fires.

## **APPENDIX 10: STAGE II EXEMPTIONS FOR PUBLIC UTILITIES AND RAILROADS**

### **STAGE II FIRE RESTRICTIONS AUTHORIZED EXEMPTION PUBLIC UTILITIES FOR EMERGENCY WORK ONLY**

#### **Development and Objective**

The Stage II Fire Restrictions Authorized Exemption is the result of lessons learned in 2000 as well as collaboration with federal and state agencies, industrial specialists and power suppliers. The objective for allowing activities to occur from 1300 (1:00 p.m.) to 0100 (1:00 a.m.) is emergency in nature only. If mitigation of emergencies is not dealt with in a timely fashion, there is a good probability that the lack of mitigation could lead to a fire start or result in an immediate threat to life and property, or the disruption of a service.

#### **Intent and Administration**

The intent of the exemption is to identify emergency conditions and on-site measures required to mitigate those conditions that would otherwise be prohibited under Stage II restriction. As written, the authorized exemption would allow emergency repairs and be noted on each agency's restrictions document. The exemption would remain in effect until the Stage II restriction was rescinded. The terms and conditions would become part of the agency restriction document and would not require the issuance of permits.

#### **Process**

The terms and conditions should not have to be modified. The intent is to ensure that there is consistency across the geographic area and that all operators are treated equally. The Area Fire Restrictions Coordinator will facilitate the distribution of the terms and conditions and work with the lead Agency Administrator to ensure agencies throughout the restriction area are consistent in their implementation of the exemptions.

The highlighted areas in the document are those that will be specific to each agency. The information in blue italics is an example of the type of information that the agency would fill in. The agency issuing the restriction document will establish a protocol for communications and coordination. It is highly encouraged that agencies throughout the restriction area work towards establishing a centralized protocol to lessen the impact on the public utility companies.

The example for vehicles in this exemption was developed according to Idaho's Rules Pertaining to Forest Fire Protection and with cooperation from Idaho utility companies. When used in other states you must utilize the proper requirements for that state and make sure you reference the proper state law or rule.



STAGE II FIRE RESTRICTION AUTHORIZED EXEMPTION  
PUBLIC UTILITIES  
**FOR EMERGENCY WORK ONLY**  
TERMS AND CONDITIONS

**Exercise of the privileges granted by this exemption constitutes agreement with and acceptance of all terms and conditions herein. This exemption does not absolve a company of any liability or responsibility for any fires ignited by the company's operations.**

### **Area Covered by Exemption**

#### **Example**

This exemption only applies to **[type of lands]** *National Forest System Lands* on the **[unit]** *Payette National Forest*. This exemption is only valid under **[agency document]** *Payette Forest Order F14-067-S-03* signed on **[date]** *July 6, 2006* and will remain in effect until rescinded.

### **Scope of Exempted Activities**

For the purpose of this exemption, public utilities are defined as a government-regulated company that provides an essential public service such as water, gas, electricity, or telecommunications. This exemption covers emergency repairs between 1300 (1:00 p.m.) and before 0100 (1:00 a.m.). Emergency repairs are defined as an unplanned outage, an unplanned break in operations of a system, an uncontrolled release of natural gas, fire, explosion, or other situations that endangers life, property, or the integrity of the system and associated components.

With the exception of emergency situations, all construction, maintenance and repair of public utilities, including any associated welding/grinding, the use of power tools, the use of acetylene or open flame torches, or the removal of "burners" (tree or limbs in or near the power lines), will follow the timelines established in the Stage II restrictions as per **[agency document]** *Payette Forest Order F14-067-S-03*.

### **Conditions and Measures**

Public utilities are hereby authorized the otherwise prohibited activities within their right-of-way per the following conditions and measures.

#### **A. Emergency Conditions**

An emergency is a condition that poses an immediate threat to life and property, or the disruption of a service. The following are typical emergencies associated with public utilities:

- Emergency removal of trees or limbs in or near electric power lines that create an immediate hazard to cause a direct impingement on the line or have the potential to start a fire.
- Emergency repair of electric transmission or distribution systems due to a power outage such as a broken wire, blown fuse, etcetera.
- Emergency repair of natural gas transmission or distribution system due to an outage on the system such as an uncontrolled release of natural gas, fire, explosion, etcetera.
- Emergency repair of an unplanned break in operations of a system.
- Emergency repair of telecommunications sites.
- Associated welding/grinding, use of power tools, use of acetylene or other torch with open flame required due to the emergency.

## B. On-site Measures Required

- Any work requiring the emergency use of welding/grinding, acetylene or other torch with open flame, or power tools off a designated road, would require equipment capable of spraying water under pressure with a minimum of 40 psi at the first outlet, with at least a 200 gallon capacity tank, and with a minimum of 200 feet of hose. All reasonable care should be taken to stay on designated roads. Equipment must be within 100 feet of any operations using welding/grinding, acetylene or other torch with open flame, or power tools.
- The use of a spark shield to surround the entire area is required when welding or grinding.
- One person with communications will be dedicated as a “fire watch” during the above operations, and for one hour after all activity has ceased for the day.
- When power outages occur, the affected line segment will be inspected before being re-energized. Motorized travel off established roads and trails is allowed during the inspection (to detect potential problems that could lead to a fire) of an electric or natural gas segment.

## C. Vehicle Requirements

All vehicles will have properly installed, maintained, and effectively working spark arresters and/or an approved muffler and exhaust system (IDAPA 20.04.01.080). In addition to the above requirement, each vehicle will:

- Have one firefighting tool per occupant with a least one tool a # 0 or equivalent shovel or a Pulaski.
- Not be parked or driving over flammable vegetation.
- Have water available at all times.

## Notification and Communications

**[Unit protocols for notification and communication when public utilities are conducting emergency work]**

*Contact (Your Local Dispatch Center) at (208-###-####) by 0900 (9:00 a.m.) to provide daily locations of all activities associated with repair of transmission or distribution system or any associated welding/grinding, or the elimination of “burners”. Notifications of emergency response activities will take place no later than the next normal business day.*

## Entry into a Fire Area

Entry into an active fire area will require the approval of the Incident Commander or the responsible Agency Administrator. Conditions imposed at that time will require a minimum clothing requirement consisting of 8-inch leather boots, gloves, hardhat, and approved fire retardant (i.e., Nomex) clothing, unless exempted by the Incident Commander.

---

Agency Administrator/Name and Title (If Signature Block is Required)

Date

## **APPENDIX 10: STAGE II EXEMPTIONS FOR PUBLIC UTILITIES AND RAILROADS**

### **STAGE II FIRE RESTRICTIONS AUTHORIZED EXEMPTION RAILROADS FOR EMERGENCY WORK ONLY**

#### **Development and Objective**

The Stage II Fire Restriction Authorized Exemption was developed is the result of lessons learned in 2000 as well as collaboration with federal and state agencies, industrial specialists and railroad companies. The objective for allowing activities to occur from 1300 (1:00 p.m.) to 0100 (1:00 a.m.) is emergency in nature only. If mitigation of emergencies is not dealt with in a timely fashion, there is a good probability that the lack of mitigation could lead to a fire start or result in an immediate threat to life and property, or the disruption of a service.

#### **Intent and Administration**

The intent of the exemption is to identify emergency conditions and on-site measures required to mitigate those conditions that would otherwise be prohibited under Stage II restriction. As written, the authorized exemption would allow emergency repairs and be noted on each agency's restrictions document. The exemption would remain in effect until the Stage II restriction was rescinded. The terms and conditions would become part of the agency restriction document and would not require the issuance of permits.

#### **Process**

The terms and conditions should not have to be modified. The intent is to ensure that there is consistency across the geographic area and that all operators are treated equally. The Area Fire Restrictions Coordinator will facilitate the distribution of the terms and conditions and work with the Agency Administrator to ensure agencies throughout the restriction area are consistent in their implementation of the exemptions.

The highlighted areas in the document are those that will be specific to each agency. The information in blue italics is an example of the type of information that the agency would fill in. The agency issuing the restriction document will establish a protocol for communications and coordination. It is highly encouraged that agencies throughout the restriction area work towards establishing a centralized protocol to lessen the impact on the public utility companies.

The example for vehicles in this exemption was developed according to Idaho Forest Fire Protection Rules and with cooperation from Idaho utility companies. When used in other state you must utilize the proper requirements for that state and make sure you reference the proper state law or rule.

<p style="text-align: center;">STAGE II FIRE RESTRICTION AUTHORIZED EXEMPTION RAILROAD COMPANIES <b>FOR EMERGENCY WORK ONLY</b> TERMS AND CONDITIONS</p>
--

**Exercise of the privileges granted by this exemption constitutes agreement with and acceptance of all terms and conditions herein. This exemption does not absolve a railroad company of any liability or responsibility for any fires ignited by the company's operations.**

### **Area Covered by Exemption**

#### **Example**

This exemption only applies to **[type of lands]** *National Forest system lands* on the **[unit]** *Payette National Forest*. This exemption is only valid under **[agency document]** *Payette Forest Order F14-067-S-03* signed on **[date]** *July 6, 2004* and will remain in effect until rescinded.

### **Scope of Exempted Activities**

This exemption covers emergency repairs between 1300 (1:00 p.m.) and before 0100 (1:00 a.m.). Emergency repairs may need to be conducted due to a derailment, damaged line, signal remediation, telecommunications problem, or other situations that endangers life, property, or the integrity of the system and associated components.

With the exception of emergency situations, all construction, maintenance, and repair of rail lines including any associated welding/grinding (including thermite), the use of power tools, the use of acetylene or open flame torches will follow the timelines established in the Stage II restrictions as per **[agency document]** *Payette Forest Order F14-067-S-03*.

### **Conditions and Measures**

Railroad companies are hereby authorized the otherwise prohibited activities within their right-of-way per the following conditions and measures.

#### **A. Emergency Conditions**

An emergency is a condition that poses an immediate threat to life and property, or the disruption of a service. The following are typical emergencies associated with railroads:

- Emergency repair of a rail that has broken or been damaged.
- Emergency remediation of a track buckle caused by extreme heat.
- Emergency cleanup of a derailment.
- Emergency remediation of a railroad signal.
- Rail relay when larger sections of a rail become worn or needs to be replaced.
- Emergency repair of telecommunications sites.
- Associated welding/grinding, use of power tools, acetylene, or other torch with open flame due to the emergency situation.

#### **B. On-site Measures Required**

- Any work requiring the emergency use of welding/grinding, acetylene or other torch with open flame, or power tools off a designated road, would require a pumper capable of spraying water under pressure with a minimum of 40 psi at the first outlet, with at least an 80-gallon capacity tank, and with a minimum of 200 feet of hose. All reasonable care should be taken

to stay on designated roads. Pumper equipment must be within 100 feet of any operations using welding/grinding, acetylene or other torch with open flame, or power tools.

- The use of a spark shield to surround the entire area is required when welding or grinding.
- Any work relating to rail relay activity off a designated road, would require a pumper capable of spraying water under pressure with a minimum of 50 psi at the first outlet, with at least a 600-gallon on site capacity, and with a minimum of 400 feet of hose on site.
- One person with communications will be dedicated as a “fire watch” during the above operations, and for two hours after all activity has ceased for the day.
- Motorized travel off established roads and trails is allowed during the inspection (to detect potential problems that could lead to a fire) of a rail line segment or repair of a telecommunications site.

### **C. Vehicle Requirements**

All vehicles will have properly installed, maintained, and effectively working spark arresters and/or an approved muffler and exhaust system (IDAPA 20.04.01.080). In addition to the above requirement, each vehicle will:

- Have one firefighting tool per occupant with a least one tool a # 0 or equivalent shovel or a Pulaski.
- Not be parked or driving over flammable vegetation.
- Have water available at all times.

### **Notification and Communications**

**Unit protocols for notification and communication when public utilities are conducting emergency work.**

*Contact (Your Local Dispatch Center) at (208-###-####) by 0900 (9:00 a.m.) to provide daily locations of all activities associated with emergency repair as a result of a derailment, damaged line, signal remediation or telecommunications problem. Notifications of emergency response activities will take place no later than the next normal business day.*

### **Entry into a Fire Area**

Entry into an active fire area will require the approval of the Incident Commander or the responsible Agency Administrator. Conditions imposed at that time will require a minimum clothing requirement consisting of 8-inch leather boots, gloves, hardhat, and approved fire retardant i.e., Nomex) clothing, unless exempted by the Incident Commander.

---

Agency Administrator Name and Title (If Signature Block is Required)

Date