

BILLINGS BLM FIRE DETAILER PACKET



2020

TABLE OF CONTENTS	
Zone Description	3
Interagency Partnership Description	4
S.O.P.'s for Fire Suppression	4-5
Zone contact phone list	5-7
Duty Officer Roles & Responsibilities	8
Zone BI and ERC Pocket Cards	9-10
Food, Hotels, & Services Phone List	11
Helpful links and Websites	12
Repeater Site Map	13
Fire Radio Frequency List	14-15
Billings Response area and Flight Restrictions QR	16
Page for Notes	17-18

BILLINGS BLM ZONE DESCRIPTION

PROTECTION

Direct suppression response areas include approximately 430,000 acres of BLM land located in the surrounding 7 county areas and the Pryor Mountains of the Custer National Forest located south of Billings. Most of these acres are inter-

N:\BIFOFire\FORMS\Detailer Packet\2020 DETAILERS PACKET

mixed with private land. Due to this, many private fires will threaten BLM land and BLM will assist the counties and the Montana DNRC. A complexity analysis is required to be completed prior to engagement on fires in the Billings Fire Zone. The on-line fire report must be completed within five days of the fire being called out.

Each county in the zone has a number of city and rural volunteer fire departments as well as county personnel and equipment. Due to the mixed ownership of lands, BLM works closely with the BIA Crow Agency, National Park Service (Bighorn Canyon), Gallatin National Forest (Big Timber Ranger District), Custer National Forest (Beartooth Ranger District) and the Lewis & Clark National Forest (Judith and Musselshell Ranger Districts), Montana Department of Natural Resources & County VFD's.

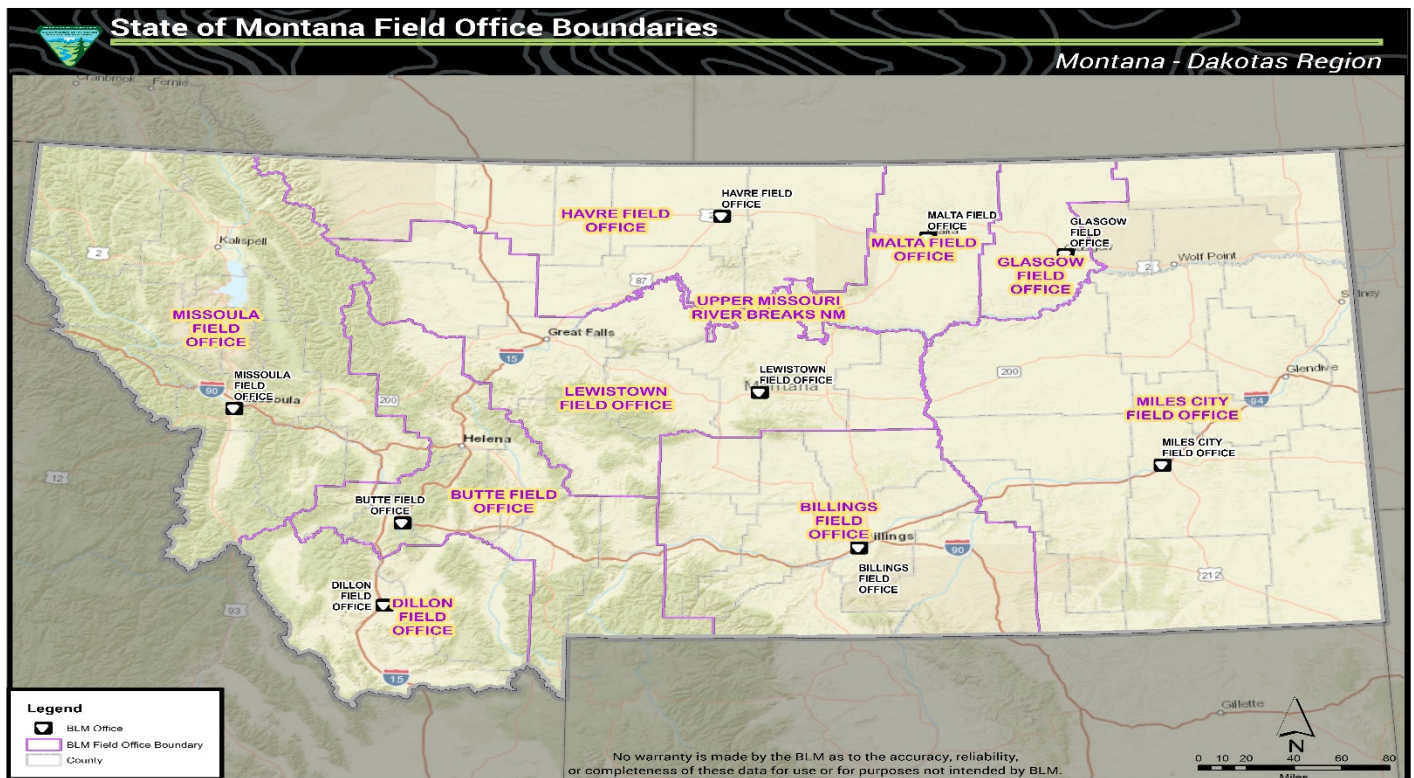
STRATEGY AND TACTICS

There are a variety of fuel types, moisture conditions and varying terrain which includes river bottoms, rolling low lands and mountainous terrain with elevations up to 9200 feet. Fuel types include models 1, 2, 6, 8, 9 & 10. Mobile attack and progressive hose lays are a common method of firefighting tactics throughout the zone.

PROBLEMS AND HAZARDS

Distances to fires can be long and response times slow due to the size of the zone, allowing some fires to grow in size. Expect county and volunteer forces to be on scene or en-route along with BLM in most areas except for the Pryor Mountains. With the number of volunteer forces, communications may become a problem; however communications can usually be established using provided mutual aid frequencies.

Wildland Urban Interface (WUI) occurs throughout the zone. WUI sub-divisions exist as far out as 60 miles from the Billings fire station. General hazards or concerns of the zone include heavy traffic in urban areas, snags, flashy & light fuels, multiple jurisdiction fire incidents, mine shafts, and other common hazards associated with wildland firefighting. We are no longer in a drought situation, which has created a very heavy light fuel loading. You can expect extremely fast and intense fire growth in this fuel type.



INTERAGENCY INITIAL ATTACK

As stated in the zone description, dispatch and its initial attack resources work closely as interagency partners in a cooperative suppression role, with the USFS, the State of Montana DNRC, and local governments.

N:\BIFOFire\Forms\Detailer Packet\2020 DETAILERS PACKET

- The BLM has a 24 hour reciprocal use agreement amongst the counties within the zone that provides for a “no cost” suppression agreement excluding the use of aircraft. Standard operating procedures for responding to a mutual aid dispatch are as follows:
 1. A request for mutual aid can be submitted via an Incident Commander, individual County Dispatch, DES Coordinator, VFD or RFD through Billings Dispatch.
 2. Responding resources work directly for the requesting County IC. If BLM land is threatened or involved, a unified command with the County IC must be established. BLM accepts the local standards for equipment and personnel on these fires and we do not “turn away” resources on scene. These resources are under the command of the local departments.
 3. BLM resources provide suppression support until either the fire is controlled and they are released, the 24 hour agreement is up, or there is another fire priority and BLM resources are reassigned by dispatch.
- During periods of high fire occurrence, the DNRC and BLM **may** collaborate to form an initial attack response group consisting of various task force and strike teams. These groups will be controlled in an ICS organization utilizing command, planning, and logistics with a developed Incident Action Plan (IAP). All resources will be under the direction of a unified command between the BLM and DNRC Duty Officers, and will be dispatched by Billings Dispatch Center. Participating IA resources need to be aware of the following:
 1. Resources dispatched must adhere to the suppression regulations dictated by incident ownership (BLM fires may involve Wilderness Study Areas/WSA's, or Areas of Critical Environmental Concern/ ACEC's which may limit tactical response with heavy equipment).
 2. Requests by counties for suppression assists are under DNRC agreements which follow similar formats as the BLM reciprocal agreements described above.
 3. Private land response requires consultation with landowners to determine values at risk, as well as unified command with the local VFD/ RFD.

S.O.P.'S FOR FIRE SUPPRESSION

- The fire orders are our rules for engagement.
- The Watchout Situations are one tool to maintain situational awareness.
- All LCES factors will be mitigated.
- All firefighters will wear appropriate PPE on the Fireline.
- All firefighters will receive a briefing prior to assignment.
- Trigger points will be defined, established and used.
- All firefighters are responsible for mindfulness, situational awareness, and providing for the safety of the team and themselves.
- All firefighters will speak out when possessing questions or concerns regarding the situation.
- A PLOWS session will follow each assignment facilitated by the crew leader
- Each module should be self-sufficient for a minimum of 24 hours.
- All traffic laws will be adhered to. The use of lights and sirens is not authorized during response to fires.
- Communications will go through Billings Dispatch.
- All resource/supply orders will go through Billings Dispatch.
- Do what is reasonably necessary to gain access to a fire (access through private land, cut fences), document what you do.
- DO not hesitate to make the call to transition a fire if it is beyond your capabilities as an IC. Realize help may not be available immediately. Do what you know to be right in the meantime: take actions that are safe, those that have the highest probability for success given your situation.

MINIMUM SUPPRESSION STANDARDS

- A Fireline at least one foot in width, down to mineral soil, will be constructed around the fire perimeter. Additions to line construction will depend on cover, slope, and fire behavior and what is required to do.
- All trees will be limbed as high as possible, with safety being adhered to, and small trees should be removed within and along the Fireline.

- Leave no unburned material inside the final Fireline.
- Mopping up the entire Fireline area is required unless not practical, due to size.
- All snags and lightning struck trees will be felled, all other timber will be carefully checked and felled if necessary.
- Logs within the Fireline will be bucked up, rolled out of their beds and dug up completely.
- Cold trail the fire entirely.
- Spot fires will be flagged.
- The fire may be abandoned 6 daylight hours after the last smoke and successful cold trailing. Do not call out unless positive.
- Garbage will be carried or packed out.
- If relieved, record time of transition, and the name of the incoming IC for your fire report.
- A flagged line from the fire to the nearest road or trail will be left for checking purposes if appropriate.

All Phone numbers are area code 406 unless noted

BILLINGS BLM FIRE STAFF		WORK	AFTER HRS.	CELL
Howells, Craig	District FMO	896-2971	591-3093	591-3093
Cullum, Chad	FMO/UAM	896-2862		698-5332
Elder, Larry	Prev/Ed/Mitigation	896-2836		839-7902
Brad Bergman	Fuels Specialist	896-2940		715-617-2738

BILLINGS DISPATCH		WORK	AFTER HRS.	CELL
Pollock, Angeline	Center Manager	896-2901		670-2961
Vacant	Asst. Center Manager	896-2902		
Rasmussen, Laura	Aircraft Dispatcher	896-2906		690-8621
Plain Bull, Darin	IA Dispatcher Crow BIA	896-2905		208-4647
Suko, Stephanie	IA Dispatcher USFS	896-2907		855-3187
Ceivert LaForge	IA Dispatcher RMA BIA	896-2907		406-413-5589
Vacant	IA Dispatcher BLM	869-2904		
Vogt, Ann	Fire Business/Logistics	896-2860	248-8719	690-7141
Vacant	Logistics BLM	896-2855		

BILLINGS FIRE STATION		WORK	AFTER HRS.	CELL
Wald, Isaac	Engine Captain 1601	896-2946		698-1769

Griffin, Bobby	Asst. Engine Captain 1601	896-2944		218-290-8221
Evans, Leroy	Engine Captain 1602	896-2966		307-389-5114
Zimmer, Kevin	Asst. Engine Captain 1602	896-2884		740-2341
Phillips, Cody	Crew Supt	896-2930		570-4992
Woodham, Aaron	Asst. Crew Sup.	896-2929		531-6207
Tangen, Patrick	Squad 1A	896-2916		303-519-5717
Lorix, Wes	Squad 1B	896-2913		224-7395
Rock, Ben	Lead Crew	896-2916		599-4685
Stark, Dylan	Senior Crew	896-2913		303-519-5717
Sylva, Camren	Senior Crew	896-2913		808-756-6880

BILLINGS TANKER BASE		WORK	AFTER HRS.	CELL
Hassler, Jim	ATB Manager	896-2910	861-4780	794-7377
Vacant	Air Services Officer			
Torske, Steve	Air Base Technician	896-2926		599-8219
Crofutt, Tyler	Fill in ATBM/RAMP			406-671-9748
Sturgill, Rodney	Retardant Contract Mgr.			406-696-4229

DNRC- SOTHERN LAND OFFICE		WORK	AFTER HRS.	CELL
VACANT	Area Manager	247-4401		
Yeager, Derek	Southern Area FMO	247-4406		698-3473
Glenn, Matt	Southern Area AFMO	247-4405		210-8137
Brown, Jeff	Rural Fire Coord.	247-4413		591-7797
Schafer, Eli	Fire Mechanic	247-4407	698-3473	
Cole, Michelle	Office Manager	247-4409		

BIGHORN COUNTY		WORK	AFTER HRS.	CELL
Hardin Dispatch			665-9780	
Redden, Matt	Fire Warden	665-9860	665-3465	679-0516
Fire Phone	On call Fire Warden	665-9780		679-0538

CARBON COUNTY		WORK	AFTER HRS.	CELL
Red Lodge Dispatch			446-1234	
Kohley, Tom	Fire Warden	446-1038		425-2071
Hoferer, Melvin	Asst. Fire Warden			670-8920

MUSSELSHELL COUNTY		WORK	AFTER HRS.	CELL
Roundup Dispatch			323-1402	
Vacant	Fire Warden	323-2777		320-0179

Mihalovic, Rob	Fire Chief	255-0124	323-3298	672-9938
----------------	------------	----------	----------	----------

STILLWATER COUNTY		WORK	AFTER HRS.	CELL
Columbus Dispatch			322-5326	
Arkel, Carol	Fire Warden	322-8029		321-1997
Cowger, Rich	Asst. Fire Warden	322-5302		321-1180

SWEET GRASS COUNTY		WORK	AFTER HRS.	CELL
Big Timber Dispatch			932-5143	
Novotny, Chris	Fire Warden	932-5483		930-0379
Fire Phone	On call Fire Warden			930-2034

TREASURE COUNTY		WORK	AFTER HRS.	CELL
Forsyth Dispatch			346-2715	
Maehr, Marlow	Fire Warden	342-5547	342-5577	679-2223
Gamble, Travis	Hysham Fire Chief	342-5577		690-9946
Robinson, Wayne	Sheriff			855-2995

All phone numbers use 406 area code unless otherwise noted.

YELLOWSTONE COUNTY		WORK	AFTER HRS.	CELL
Billings Dispatch-911			657-8200	
KC Williams	Fire Warden	256-2776		256-6947

Beartooth Ranger District		WORK	AFTER HRS.	CELL
Coffin, Ken	District Ranger		446-4529	
Flick, Jeff	FMO	446-4538		855-3788
Vacant	AFMO	446-4523		
Grimes, Drew	Fuels Specialist	446-4528	446-2475	425-0667
Tuss, Chad	Engine Foreman	446-4524	860-7939	855-3186
Fossness, Luke	Engine Foreman	446-4522		425-0181
Stabio, Jeff	Asst. Eng Foreman	446-4581		425-4887
Robinson, Julian	Asst. Eng Foreman	446-4581		697-5551
Haworth, Katrina	LEO	446-4585	425-3718	

BIA CROW AGENCY		WORK	AFTER HRS.	CELL
Vacant	FMO	638-2247		
Spang, Tracey	AFMO		720-0746	679-0034
House, Twilla	Fire Business	638-2247		623-0039

N:\BIFOFire\Forms\Detailer Packet\2020 DETAILERS PACKET

Pretty On Top, Randy	Fuels Specialist	638-2247		665-7177
Old Bear, Lee	Fire Prevention	638-2247		
Archie Flatlip	Pryor Station	256-1592		860-6713
Bearcrane, Jayson	Forestry Tech	246-1592		290-1475
Big Hair, Karl	Forestry Tech	638-2247		561-3356

All phone numbers use 406 area code unless otherwise noted.

DUTY OFFICER

Roles & Responsibilities

- 1) Qualified as ICT3 or Single Resource Boss (TFLD, STEN)
- 2) Manage fire organization in a safe, efficient manner
- 3) Have Delegated Authority from Zone FMO
- 4) Notify dispatch of resource status daily
- 5) Coordinate Initial Attack activities with dispatch and local cooperators
- 6) Monitor work / rest guidelines of all resources
- 7) Keep FMO and Line Officer aware of all activity within the zone
- 8) Make sure all supporting fire incident documentation is completed and processed (fire reports, crew time, etc.)
- 9) Maintains 24 hour communication w/ dispatch, while D.O.
- 10) Ensure all personnel are accounted for at the end of each day.

STANDARD FIRE CREW DAILY SCHEDULE

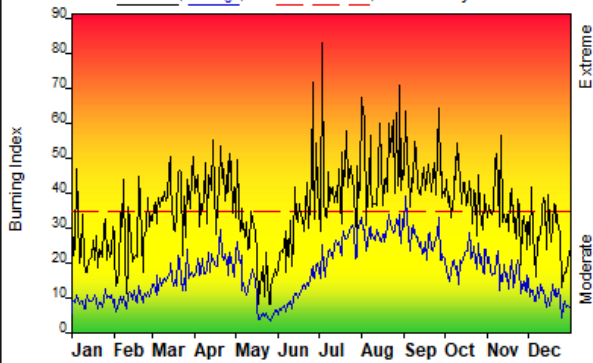
- 1) • 0900-0915 Engine Checks
- 2) • 0900-1015 Physical Training or at project site
- 3) • 1015-1030 Daily Resource Briefing
- 4) • 1030 All Fire Personnel ready for the day & or assignments
- 5) • 1030-1700 Patrol, Project Work, Standby & 1/2 hour Lunch
- 6) • 1700-1730 Clean up for the day, Ready for following day, Debrief, Close Shop

FIRE CREW DAILY DUTIES

- 1) Complete morning vehicle checks and update vehicle logs & reports
- 2) Actively participate in morning briefing & Six Minutes for Safety
- 3) Participate and develop personal P.T. program and maintain through summer
- 4) Make sure all firefighting gear is accounted for and equipment is ready
- 5) Station is clean at all times and help out where help is needed
- 6) Maintain communications with dispatch throughout the day of status & location
- 7) Engines are furbished and maintained at all times throughout the day & summer

FIRE DANGER -- (Fire Danger Area)

Maximum, Average, and 90th Percentile, based on 11 years data



Fire Danger Area:

- ◆ Billings Low Elevation
- ◆ 125 126 127 128 129 131
- ◆ Steamboat/LBH/Steamboat
- * Does NOT Meet NWCG Wx Station Standards

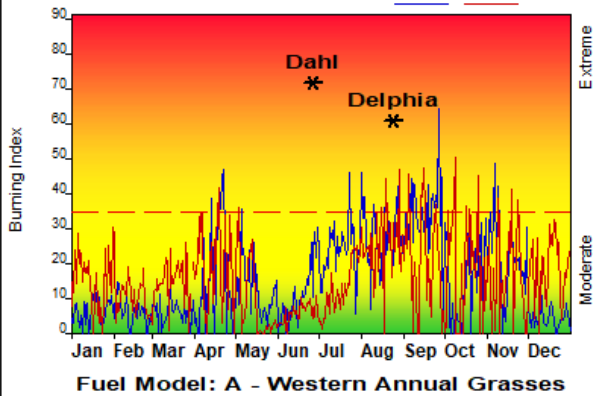
Fire Danger Interpretation:

- EXTREME -- Use extreme caution
- High -- Watch for change
- Moderate -- Lower Potential, but always be aware

Maximum -- Highest Burning Index by day for 2009 - 2019
Average -- shows peak fire season over 11 years (4014 observations)
90th Percentile -- 10% of the 4014 days from 2009 - 2019 had an Burning Index above 35

Local Thresholds - Watch out: Combinations of any of these factors can greatly increase fire behavior:
20' Wind Speed over 20 mph, RH less than 15%,
Temperature over 90

Years to Remember: 2009 2019



Remember what Fire Danger tells you:

- ✓ Burning Index gives day-to-day fluctuations calculated from 2 pm temperature, humidity, wind, daily temperature & rh ranges, and precip duration.
- ✓ Wind is part of BI calculation.
- ✓ Watch local conditions and variations across the landscape -- Fuel, Weather, Topography.
- ✓ Listen to weather forecasts -- especially WIND.

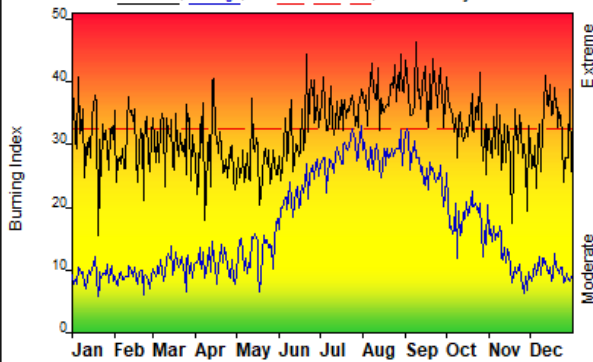
Past Experience:

Responsible Agency: Unknown
FF+5.0 build 20191211 06/01/2020-11:05 (E:\NFDRS\udated\SIGLOWandHIGHFINAL)

Design by NWCG Fire Danger Working Team

FIRE DANGER -- (Fire Danger Area)

Maximum, Average, and 90th Percentile, based on 10 years data



Fire Danger Area:

- ◆ Billings High Elevation
- ◆ 126,129
- ◆ Wildhorse/Pryor/TC/BH
- * Does NOT Meet NWCG Wx Station Standards

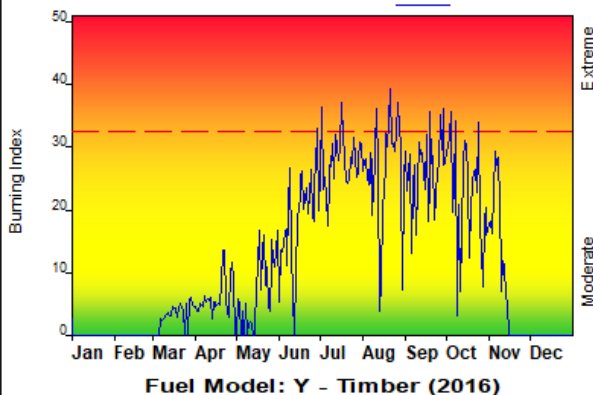
Fire Danger Interpretation:

- EXTREME -- Use extreme caution
- High -- Watch for change
- Moderate -- Lower Potential, but always be aware

Maximum -- Highest Burning Index by day for 2010 - 2019
Average -- shows peak fire season over 10 years (3849 observations)
90th Percentile -- 10% of the 3849 days from 2010 - 2019 had an Burning Index above 32

Local Thresholds - Watch out: Combinations of any of these factors can greatly increase fire behavior:
20' Wind Speed over 20 mph, RH less than 20%,
Temperature over 80

Years to Remember: 2010



Remember what Fire Danger tells you:

- ✓ Burning Index gives day-to-day fluctuations calculated from 2 pm temperature, humidity, wind, daily temperature & rh ranges, and precip duration.
- ✓ Wind is part of BI calculation.
- ✓ Watch local conditions and variations across the landscape -- Fuel, Weather, Topography.
- ✓ Listen to weather forecasts -- especially WIND.

Past Experience:

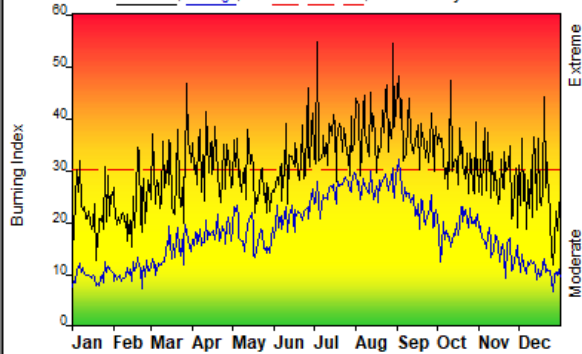
(Past and Local Experience)

Responsible Agency: Unknown
FF+5.0 build 20191211 03/30/2020-12:56 (E:\NFDRS\udated\SIGLOWandHIGHFINAL)

Design by NWCG Fire Danger Working Team

FIRE DANGER -- (Fire Danger Area)

Maximum, Average, and 90th Percentile, based on 10 years data



Fire Danger Area:

- ◆ Billings Low Elevation
- ◆ 125 126 127 128 129 131
- ◆ Steamboat/LBH/Steamboat
- * Does NOT Meet NWCG Wx Station Standards

Fire Danger Interpretation:

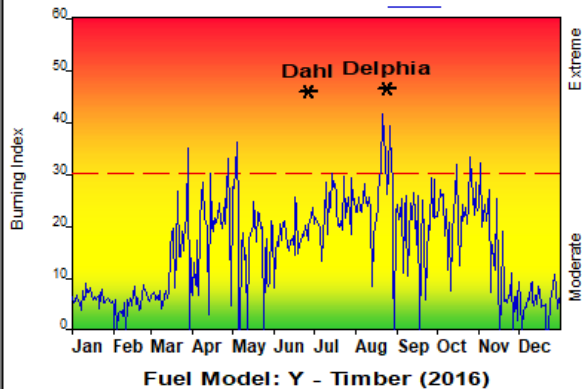
- EXTREME -- Use extreme caution
- High -- Watch for change
- Moderate -- Lower Potential, but always be aware

Maximum -- Highest Burning Index by day
for 2010 - 2019

Average -- shows peak fire season over 10 years (3649 observations)
90th Percentile -- 10% of the 3649 days from 2010 - 2019
had an Burning Index above 30

Local Thresholds - Watch out: Combinations
of any of these factors can greatly increase fire behavior:
20' Wind Speed over 0 mph, RH less than 1%,
Temperature over 1

Years to Remember: 2010



Remember what Fire Danger tells you:

- ✓ Burning Index gives day-to-day fluctuations
calculated from 2 pm temperature, humidity, wind,
daily temperature & rh ranges, and precip duration.
- ✓ Wind is part of BI calculation.
- ✓ Watch local conditions and variations across
the landscape -- Fuel, Weather, Topography.
- ✓ Listen to weather forecasts -- especially WIND.

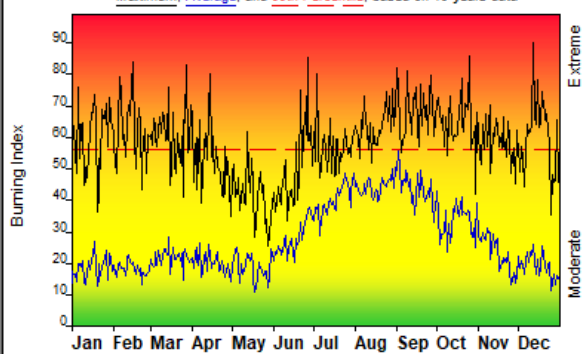
Past Experience:

Responsible Agency: Unknown
FF+5.0 build 20191211 03/30/2020-12:50 (E:\NFDRS\udated\SIGLOWandHIGHFINAL)

Design by NWCG Fire Danger Working Team

FIRE DANGER -- (Fire Danger Area)

Maximum, Average, and 90th Percentile, based on 10 years data



Fire Danger Area:

- ◆ Billings High Elevation
- ◆ 126,129
- ◆ Wildhorse/Pryor/TC/BH
- * Does NOT Meet NWCG Wx Station Standards

Fire Danger Interpretation:

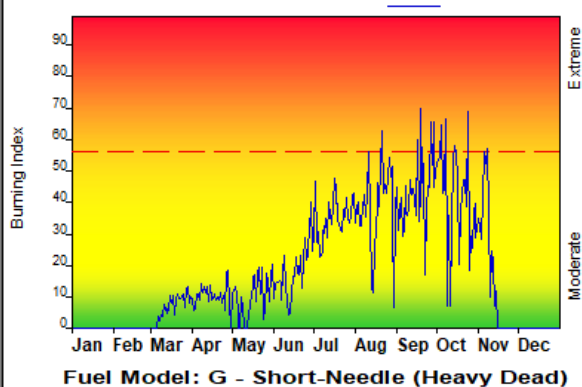
- EXTREME -- Use extreme caution
- High -- Watch for change
- Moderate -- Lower Potential, but always be aware

Maximum -- Highest Burning Index by day
for 2010 - 2019

Average -- shows peak fire season over 10 years (3649 observations)
90th Percentile -- 10% of the 3649 days from 2010 - 2019
had an Burning Index above 50

Local Thresholds - Watch out: Combinations
of any of these factors can greatly increase fire behavior:
20' Wind Speed over 20 mph, RH less than 20%,
Temperature over 80

Years to Remember: 2010



Remember what Fire Danger tells you:

- ✓ Burning Index gives day-to-day fluctuations
calculated from 2 pm temperature, humidity, wind,
daily temperature & rh ranges, and precip duration.
- ✓ Wind is part of BI calculation.
- ✓ Watch local conditions and variations across
the landscape -- Fuel, Weather, Topography.
- ✓ Listen to weather forecasts -- especially WIND.

Past Experience:

(Past and Local Experience)

Responsible Agency: Unknown
FF+5.0 build 20191211 03/30/2020-12:54 (E:\NFDRS\udated\SIGLOWandHIGHFINAL)

Design by NWCG Fire Danger Working Team

Restaurants, Hotels and Vehicle Repair

All phone numbers use 406 area code unless otherwise noted.

FOOD		
Applebee's	204 Main Street	896-8450
Blue's Barbeque	523 Hilltop Road	245-2583
Bull Mountain Grill	2376 Main Street	254-2855
Denny's	501 N. 27 th Street	256-7335
Fuddruckers	875 Main Street	259-2489
Guadalajara	1403 Main Street	245-2151
Jimmy John's	611 Hilltop Road	281-8283
Mackenzie River	405 Main Street	254-0066
Panda Express	1633 Main Street	248-6699
Perkin's	825 N. 27 th Street	248-8320
Subway	SE corner of Main & Airport	254-1300
HOTELS		
Baymont Inn	2030 Overland Ave.	545-4065
Boot Hill Inn	242 E. Airport Road	245-2000
Country Inn & Suites	231 Main Street	245-9995
Days Inn	843 Parkway Lane	545-5805
DoubleTree	27 N. 27 th Street	252-7400
Heights Inn	1206 Main Street	252-8451
Home2 Suites	2611 7 th Ave N	252-2255
Red Lion	5500 Midland Road	248-7701
Twin Cubs	1818 Main Street	252-9851
Automotive		
Archie Cochrane Ford	2133 King Ave. West	800-593-7459
Denny Menholt Chevy	3000 King Ave. West	896-3100
G&J Diesel	1739 Main Street	248-6366
I-State Truck Center (Freightliner)	4600 South Frontage Road	252-5121
Lithia Dodge	2229 King Ave. West	844-898-5387
Motor Power (International)	4941 Midland Road	252-5651
Rimrock Auto (GMC-Chevy)	840 S Shiloh Road	877-263-0862

Helpful links and web sites

Billings Weather Service: <http://www.wrh.noaa.gov/byz/>

Lightning site: <http://thunderstorm.vaisala.com/explorer.html>

Lightning Safety: <http://www.lightningsafety.noaa.gov/> http://www.lightningsafety.com/nlsi_pls/lst.html

NRCC Predictive Services: <http://gacc.nifc.gov/nrcc/predictive/weather/weather.htm>

Montana Drought Monitor: http://droughtmonitor.unl.edu/DM_state.htm?MT,W

NWCG Risk Management: <http://www.nwcg.gov/branches/pre/rmc/index.htm>

BLM Fire Operations: http://web.blm.gov/internal/fire/fire_ops/index.html

USFS Fire Operations: <http://www.fs.fed.us/fire/>

BIA Fire Operations: <http://www.bia.gov/nifc/index.htm>

US Park Service Fire Operations: <http://www.nps.gov/fire/wildland-fire/>

Montana DNRC Fire Operations: <http://www.dnrc.mt.gov/forestry/fire/>

Billings Interagency Dispatch: <http://www.blm.gov/pgdata/content/mt/en/prog/fireaviation/bdc.html>

Northern Rockies GACC: <http://gacc.nifc.gov/nrcc/>

NICC: <http://www.nifc.gov/nicc/>

NRCG: <http://www.fs.fed.us/r1/fire/nrcg/index.html>

DNRC Map Tool: <http://dnrc.mt.gov/gis/fire/>

BIA Incident Business: <http://www.bia.gov/nifc/Administration/IBC/index.htm>

BLM Incident Business Management:

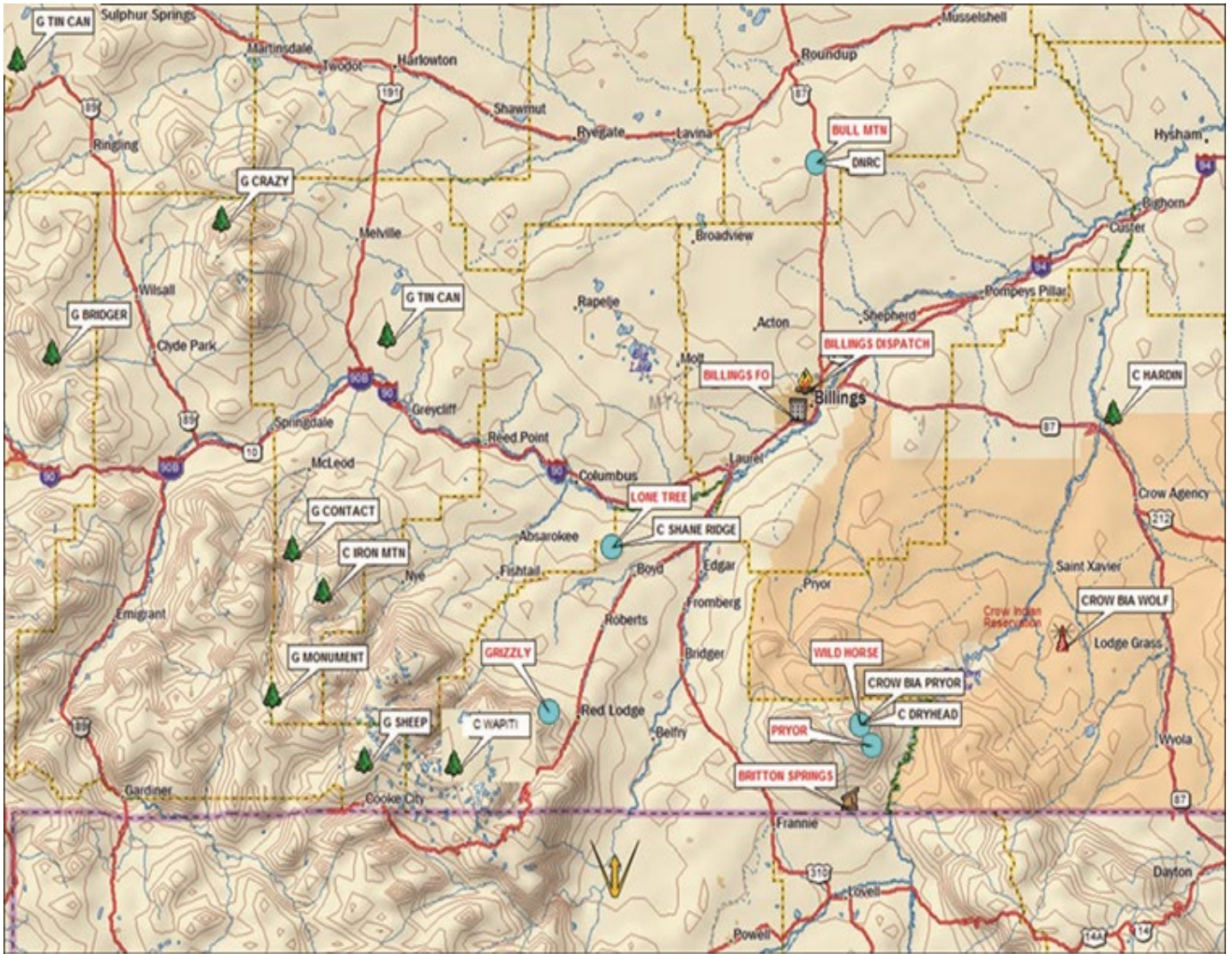
http://web.blm.gov/internal/fire/budget/Reference_docs/Incident%20Business/IB-new/Personnel.html

MT DNRC Fire Business: <http://dnrc.mt.gov/forestry/Fire/Business/default.asp>

USFS Incident Business: <http://www.fs.fed.us/fire/ibp/index.html>

BLM Help Desk: <http://www.blm.gov/nirmc/telecom/remote.php>

Group 4 – BIA CROW FIRE



Billings Dispatch: 406-896-2900						MT Comm Plan FINAL 2020		
GROUP 3 – DNRC SOUTHERN LAND OFFICE (WEST)								
CH #	CHANNEL NAME	SCAN	RX	RX CG/NAC	TX	TX CG/NAC	MODE	REMARKS
1	DNR TAC 1	*	151.4600		151.4600		RX:M/TX:A	DNRC TAC 1 - Fire Tac/Work Channel
2	DNRC SHANE		151.2650		159.4050	127.3	RX:M/TX:A	DNRC Repeater Shane Ridge
3	DNRC GRYCLF		151.2650		159.4050	123.0	RX:M/TX:A	DNRC Repeater - Greycliff
4	BLM GRIZZLY		171.1625	\$F7E	166.0875	136.5	RX:M/TX:M	BLM Repeater - Grizzly
5	SOA 2		167.1750	\$F7E	167.1750	\$293	RX:M/TX:M	BLM Scene of Action 2 – Fire Tac/Work Channel
6	RUBY RPT		153.8300		159.3450		RX:M/TX:A	DNRC Fire Repeater
7	RED		154.0700		154.0700	156.7	RX:M/TX:A	State Mutual Aid – Fire Common
8	MAROON		154.2800		154.2800	156.7	RX:M/TX:A	State Mutual Aid – Command
9	CORAL		154.2650		154.2650	156.7	RX:M/TX:A	State Mutual Aid – Tac
10	SCARLET		154.2950		154.2950	156.7	RX:M/TX:A	State Mutual Aid – Tac
11	COPPER		154.2725		154.2725	156.7	RX:M/TX:A	State Mutual Aid – Tac
12	BURGUNDY		154.2875		154.2875	156.7	RX:M/TX:A	State command & Control
13	GOLD		153.9050		153.9050	156.7	RX:M/TX:A	General Mutual Aid and Coordination
14	A/G 48		167.8875		167.8875		RX:M/TX:A	BLM Air to Ground Primary
15	ORANGE		151.4000		151.4000		RX:M/TX:A	DNRC Secondary Air to Ground
16	YELLOW		151.2200		151.2200		RX:M/TX:A	DNRC Primary Air to Ground
**All Code Guards are preprogrammed, not user selectable.								

Billings Dispatch: 406-896-2900						MT Comm Plan FINAL 2020		
GROUP 4 – BIA CROW FIRE								
CH #	CHANNEL NAME	SCAN	RX	RX CG/NAC	TX	TX CG/NAC	MODE	REMARKS
1	S. DIRECT	*	151.2650		151.2650	141.3	RX:M/TX:M	Direct to Billings Dispatch
2	BIA WOLF		172.4750		166.2750	107.2	RX:M/TX:A	BIA Wolf Repeater
3	BIA PRYOR		172.4750		166.2750	114.8	RX:M/TX:A	BIA Pryor Repeater
4	DNR POMP		151.2650		159.4050	141.3	RX:M/TX:A	DNRC Pompey Repeater
5	DNR TAC 1		167.1750		151.4600		RX:M/TX:M	BLM Scene of Action 2 - Fire Tac/Work Channel
6	SOA 2		167.1250		167.1750		RX:M/TX:A	BIA TAC - FIRE NET 2 /Work Channel
7	BIA TAC 2		153.8300		167.1250	127.3	RX:M/TX:A	DNRC Portable Fire Repeater
8	RUBY RPT		155.3400		159.3450		RX:M/TX:A	Life Flight - Air to Ground (VME D28)
9	TAN		154.0700		155.3400	156.7	RX:M/TX:A	State Mutual Aid - Fire Common
10	RED		154.2800		154.0700	156.7	RX:M/TX:A	State Mutual Aid - Command
11	MAROON		154.2650		154.2800	156.7	RX:M/TX:A	State Mutual Aid - Tac
12	CORAL		154.2950		154.2650	156.7	RX:M/TX:A	State Mutual Aid - Tac
13	SCARLET		154.2875		154.2950	156.7	RX:M/TX:A	State command & Control
14	A/G 48		167.8875		167.8875		RX:M/TX:A	Billings Fire MT07 Air-to-Ground Primary
15	BURGUNDY		154.2875		154.2875	156.7	RX:M/TX:A	Montana Fire Mutual Aid Tactical 3 (VFIRE 24)
16	ORANGE		151.4000		151.4000		RX:M/TX:A	DNRC Secondary Air to Ground
**All Code Guards are preprogrammed, not user selectable.								

Billings Response area, and Flight restrictions Map.



[illegible]

[illegible]

7/18/20