

Coeur d'Alene Interagency Dispatch Center

11569 N. Airport Drive
Hayden, ID 83835
208-772-3283



2017 End of Year Report



Produced annually by the Coeur d'Alene Interagency Dispatch Center,

Published January 2018

Additional copies of this publication may be ordered from:
Coeur d'Alene Interagency Dispatch, 11569 N. Airport Drive, Hayden, ID 83835

In addition, this publication can be downloaded from the internet website at:

http://gacc.nifc.gov/nrcc/dc/idcdc/admin/CDC_EOY.pdf

Cover photo: North Fork Hughes Fire, August 27, 2017

Coeur d'Alene Interagency Dispatch Center (ID-CDC)

The 2017 season was the 19th season of operation for the Coeur d'Alene Interagency Dispatch Center (CDC). The following provides a brief overview of the season's statistics and activity.

CDC STAFFING

The CDC organization saw several changes during 2017. The Center Manager position was filled in early January by *Destry Scheel*, who had been detailed into the position in 2016. *Melanie Roose* continued as the IPNF Assistant Center Manager overseeing Operations and *Gary Weber* as the IDL Assistant Center Manager with Logistics/Intel oversight. *Sarah Wolf* switched agencies when she was hired by the IPNF for the Lead Aircraft Dispatcher position; at the same time, Kevin Kratsch was hired by the IPNF for the vice-Wendy Dougherty Lead Initial Attack Dispatcher position for the Central Zone. The other Lead Initial Attack Dispatcher positions were unchanged, South Zone *Beth Crowell* (IDL), and North Zone *Randy Thomas* (IPNF). Returning IA Dispatchers were rotated to different zones; *Shyenne Badertscher* (IDL) to South Zone and *Aurora Hambright* (IPNF) to Central Zone, *Elizabeth Linehan* (IPNF) was assigned to the front desk receptionist position. *Haley Goodnight* was hired by the IDL for the other IA Dispatcher position. Evening Dispatcher *John Ryan* (IDL) returned again.

FIRE SEASON REFLECTIONS

After a long cold and wet winter and spring, the 2017 fire season, predicted to be "average or below" got off to a late start with only a handful of fires before mid-June. Once the weather changed in mid-June, it did so rapidly, with all areas moving into High fire danger by the first week of July and escalating into Extreme by the end of the month and remaining there until the first significant precipitation in the middle of September. Fires began picking up the last week of June, starting on the 24th with two fires each day on six of the next seven days. July was the busiest month, with 89 fires. There were 44 days with multiple new fires, the most on any one day being 13 on July 15th. The season closed out with 5 fires during a wind event on October 17th. Overall, the number of fires was below average, but the acres burned was above average. An IMT3 was brought in for one fire; one of the local Type 3 IMTs was mobilized twice and reassigned to a second fire in each case. ICT3s and Fire Use Modules were brought in for one long-term wilderness fire. Six out-of-area dispatchers, three militia, and five local ADs provided support for the IA organization. CDC Expanded operated for over eight weeks, staffed by three local ADs, three local militia, and three out-of-area detailers.

Local Incident Management Teams were busy; Type 3: *IC-Rod Weeks*: two mobilizations (both out of the CDC Zone) for 50 days, *IC-Jason Svancara*: four mobilizations (two out of CDC Zone, to the same fire before and after a Type 2 IMT) for 43 days. Type 2: *IC-Shawn Pearson*: four mobilizations (all out of CDC Zone) for 63 days, *IC-Mike Almas*: five mobilizations (all out of CDC Zone) for 67 days. One Type 3 IMT was brought into the area.

CDC mobilized six Type 2-IA crews, one locally and the other five to four different geographic areas. Twenty-eight agency engines mobilized to seven different geographic areas; 26 of the 28 were agency-specific or name requests. Ten engines were brought in under the R1-R3 Agreement and three under BLM Preposition. In addition, 21 engines and 11 crews were brought in on incident requests.

FIRES

The fire statistics for this report are as of 12-31-17

Table 1. IPNF Fires

Forest Service Idaho Panhandle NFs (IPF)	Number of Fires	Total Acres
Coeur d'Alene River (D1)	16	19.1
St. Joe (D4)	11	2409.9
Sandpoint (D6)	11	30.9
Bonniers Ferry (D7)	12	6.4
Priest Lake (D8)	21	4984.9
Total 2017	71	7451.2
10 Year Average	90.2	6720.6
Totals for Year 2016	36	2330.8
Totals for Year 2015	177	51738.8
Totals for Year 2014	100	262.4
Totals for Year 2013	100	1,737.4
Totals for Year 2012	57	29.5
Totals for Year 2011	77	1,283.8
Totals for Year 2010	59	494.9
Totals for Year 2009	123	1,745.2
Totals for Year 2008	102	132.3

Table 2. CDT Fires

Coeur d'Alene Tribe (CDT)	Number of Fires	Total Acres
Total 2017	3	1.8
10 Year Average	7.2	11.9
Totals for Year 2016	5	15.5
Totals for Year 2015	16	17.1
Totals for Year 2014	9	19.3
Totals for Year 2013	7	10.5
Totals for Year 2012	8	37.4
Totals for Year 2011	12	6.7
Totals for Year 2010	0	0
Totals for Year 2009	6	3.9
Totals for Year 2008	6	7.1

(Note: With the exception of Table 5, all fire numbers and acres are based on protection unit)

Table 3. IDL Fires

Idaho Department of Lands (IDL)	Number of Fires	Total Acres
Cataldo (CAS)	18	13.5
Kootenai Valley (KVS)	6	0.9
Mica (MIS)	15	29.1
Ponderosa (PDS)	6	1017.7
Priest Lake (PLS)	16	6.9
Pend Oreille (POS)	22	29.3
West St. Joe (SJS)	24	96.9
Total 2017	107	1194.3
10 Year Average	120.8	768.8
Totals for Year 2016	83	618.5
Totals for Year 2015	147	3087.2
Totals for Year 2014	152	661.8
Totals for Year 2013	110	352.3
Totals for Year 2012	81	220.4
Totals for Year 2011	126	172.4
Totals for Year 2010	74	637.7
Totals for Year 2009	193	227.4
Totals for Year 2008	135	515.8

Table 4. Dispatch Zone Fires

Dispatch Zones	Number of Fires	Total Acres	Other Incident Reports Received*
North Zone (NZ)	88	5059.3	118
Central Zone (CZ)	49	61.7	65
South Zone (SZ)	44	3526.3	54
Total 2017	181	8647.3	237
10 Year Average	218.2	7501.2	308.2
Total for year 2016	124	2964.8	202
Total for year 2015	340	54,843.1	527
Total for year 2014	261	943.5	301
Total for year 2013	217	2,100.2	255
Total for year 2012	146	287.3	286
Total for year 2011	215	1,462.9	267
Total for year 2010	133	1,132.56	303
Total for year 2009	322	1,976.46	392
Total for year 2008	243	654.21	312

* No Action, False Run, Mutual Aid, Abandoned Campfires, Non-fire Incidents

Table 5. Ownership Reporting by Protection Unit

Ownership▶	BLM		CDT		IPNF		NCF/COF*		Private		State	
	#	Acres	#	Acres	#	Acres	#	Acres	#	Acres	#	Acres
CDT Human	n/a	n/a	1	1.5	n/a	n/a	n/a	n/a	1	0.2	0	0.0
CDT Lightning	n/a	n/a	0	0.0	n/a	n/a	n/a	n/a	1	0.1	0	0.0
IPNF Human	0	0.0	n/a	n/a	30	1478.4	n/a	n/a	3	108.1	1	824.0
IPNF Lightning	0	0.0	n/a	n/a	34	4174.3	1	846.0	5	20.4	0	0.0
IDL Human**	1	0.1	1	16.0	6	6.4	1	80.0	53	1048.3	15	12.4
IDL Lightning**	2	0.2	2	2.8	7	4.8	n/a	n/a	13	7.1	10	18.9
Total 2017	3	0.3	4	20.3	77	5663.9	2	926.0	76	1184.2	26	855.3

* Includes IDL Ponderosa fire on Clearwater NF and IPNF fire that burned onto Colville NF

** Includes CPTPA fires on IPNF

n/a = no ownership within that agency's protection

Table 6. Prescribed Fires

Agency	BLM		CDT		IDL		FS		TOTAL	
	#	Acres	#	Acres	#	Acres	#	Acres	#	Acres
Prescribed Fire Totals	6	337	6	1005	50	2691	50	1365	112	5398

After Hours Phone Call Statistics

After business hours, the evening dispatcher received a total of 277 calls. General business calls accounted for the most of calls (222), followed by fire-related (41), and out-of-area issues (14). No records were kept for the 2012 season when there was no dedicated evening dispatcher and relief or additional evening dispatchers generally do not tally calls.

Table 7. Evening Calls

Evening Dispatcher	Number of After Hours Business Calls	Remarks
Total for year 2017	277	* June 25 – September 28
Total for year 2016	164	* June 26 – September 29
Total for year 2015	224	* June 22 – October 1
Total for year 2014	165	* June 29 – September 25
Total for year 2013	268	* June 30 – September 26
Total for year 2012	N/A	No dedicated evening dispatcher
Total for year 2011	385	* June 1 – September 29
Total for year 2010	285	* July 4 – September 29
Total for year 2009	461	* June 21 – September 30
Total for year 2008	544	June 29 – September 30
Total for year 2007	696	July 1 – October 1
Total for year 2006	592	May 27 – September 28
Total for year 2005	471	June 26 – September 29
Total for year 2004	367	June 21 – September 30

* Note: on Night Dispatcher's days off, tallies were not kept by relief dispatchers

NORTH ZONE STATISTICS

Table 8. North Zone Total Fires

Total Fires for Season	88
Acres	5059.3
Number of Lightning Days	Unavailable

Table 9. North Zone Fires and Causes

Cause	D6		D7		D8		PLS		POS		KVS		TOTAL	
	#	Acres	#	Acres	#	Acres	#	Acres	#	Acres	#	Acres	#	Acres
Lightning	7	29.8	6	3.9	14	4982.8	7	1.7	5	0.5	1	0.1	40	5018.8
Equipment Use					1	0.1			3	3.3			4	3.4
Smoking							1	4.0					1	4
Campfire					3	0.8	5	0.5	1	0.1			9	1.4
Debris Burning					1	1.0	1	0.1	6	19.6			8	20.7
Railroad													0	0
Arson									1	0.1	1	0.1	2	0.2
Children													0	0
Miscellaneous							1	0.5	3	1.4			4	1.9
Human/Unknown	4	1.1	6	2.5	2	0.2	1	0.1	3	4.3	4	0.7	20	8.9
TOTAL	11	30.9	12	6.4	21	4984.9	16	6.9	22	29.3	6	0.9	88	5059.3

Table 10. North Zone Detection

Method	D6	D7	D8	PLS	POS	KVS	TOTAL
Lookout			6	5			11
Agency Employee	2	2	3	1	3		11
Permittee/Cooperator			1			1	2
Aerial Observer	1	1					2
Other Aircraft	1		4				5
Other (Public)	7	9	7	10	19	5	57
TOTAL	11	12	21	16	22	6	88

Table 11. North Zone Other Incident Reports

Type	D6	D7	D8	PLS	POS	KVS	TOTAL
No Action			2	1	7	1	11
False Alarm	4	5	13	20	24	15	81
Mutual Aid			1	2	5	3	11
Campfire	1		1	3	5	1	10
Misc Law, Medical, etc	1	2	2				5
TOTAL	6	7	19	25	41	20	118

Table 12. Resources Assigned to North Zone Incidents – AIRCRAFT

Aircraft	D6	D7	D8	PLS	POS	KVS	TOTAL
Airtanker, Type 1-2-VLAT	2						2
Airtanker, Type 3-4 (SEAT)	9		4		2		15
Helicopter, Type 1	1		1				2
Helicopter, Type 2	6	2	7		1		16
Helicopter, Type 3	11	5	13		1		30
Air Attack/ASM/Lead Plane	5	2	1				8
Smokejumper A/C	4		3				7
TOTAL	38	9	29	0	4	0	80

Table 13. Resources Assigned to North Zone Incidents – CREWS

Crews	D6	D7	D8	PLS	POS	KVS	TOTAL
Crew, Type 1			1				1
Crew, Type 2-IA	2	1	2				5
Crew, Type 2	1						1
TOTAL	3	1	3	0	0	0	7

Table 14. Resources Assigned to North Zone Incidents – EQUIPMENT

Equipment	D6	D7	D8	PLS	POS	KVS	TOTAL
Engine, Type 1-2							
Engine, Type 3							
Engine, Type 4			7		1		8
Engine, Type 5	1		1	15	32	8	57
Engine, Type 6	9	3	5	7	4		28
Engine, Type 7				2			2
Water Tender	3				6		9
Dozer					1		1
Excavator						1	1
Palm IR							
Skidder/Skidgine							
Transport (Lowboy, etc)							
Transportation							
UTV/ATV			1				1
Other							
TOTAL	13	3	14	24	44	9	107

Table 15. Resources Assigned to North Zone Incidents – OVERHEAD

Overhead	D6	D7	D8	PLS	POS	KVS	TOTAL
TOTAL	84	107	181	11	36	13	432

CENTRAL ZONE STATISTICS

Table 16. Central Zone Total Fires

Total Fires for Season	49
Acres	61.7
Number of Lightning Days	Unavailable

Table 17. Central Zone Fires and Causes

Cause	D1		CAS		MIS		TOTAL	
	#	Acres	#	Acres	#	Acres	#	Acres
Lightning	5	2.8	7	4.0	3	3.0	15	9.8
Equipment Use	1	0.2	1	2.9	1	0.1	3	3.2
Smoking							0	
Campfire	8	1.0	2	0.2	3	0.3	13	1.5
Debris Burning			1	0.1	3	4.8	4	4.9
Railroad							0	
Arson			3	0.4	2	2.1	5	2.5
Children							0	
Miscellaneous	1	15.0			3	18.8	4	33.8
Human/Unknown	1	0.1	4	5.9			5	6.0
TOTAL	16	19.1	18	13.5	15	29.1	49	61.7

Table 18. Central Zone Detection

Method	D1	CAS	MIS	TOTAL
Lookout				N/A
Agency Employee	3	2		5
Permittee/Cooperator		1	1	2
Aerial Observer	2	1		3
Other Aircraft	1			1
Other (Public)	10	14	14	38
TOTAL	16	18	15	49

Table 19. Central Zone Other Incident Reports

Type	D1	CAS	MIS	TOTAL
No Action		1		1
False Alarm	6	15	16	37
Mutual Aid	1	13	1	15
Campfire	5	1	1	7
Misc Law, Medical, etc	5			5
TOTAL	17	30	18	65

Table 20. Resources Assigned to CENTRAL Zone Incidents – AIRCRAFT

Aircraft	D1	CAS	MIS	TOTAL
Airtanker, Type 1-2-VLAT				
Airtanker, Type 3-4 (SEAT)	4	6		10
Helicopter, Type 1				
Helicopter, Type 2	3	5	1	9
Helicopter, Type 3	6	2	1	9
Air Attack/ASM/Lead Plane	2	3		5
Smokejumper A/C	2			2
TOTAL	17	16	2	35

Table 21. Resources Assigned to Central Zone Incidents – CREWS

Crews	D1	CAS	MIS	TOTAL
Crew, Type 1				
Crew, Type 2-IA	1	1		2
Crew, Type 2				
TOTAL	1	1	0	2

Table 22. Resources Assigned to Central Zone Incidents – EQUIPMENT

Equipment	D1	CAS	MIS	TOTAL
Engine, Type 1-2	2	5		7
Engine, Type 3	2	1		3
Engine, Type 4	13	1	5	19
Engine, Type 5	3	13	13	29
Engine, Type 6	8	8	10	26
Engine, Type 7		2		2
Water Tender	1	8	1	10
Dozer		2	1	3
Excavator		2		2
Palm IR				
Skidder/Skidgine				
Transport (Lowboy, etc)		1		1
Transportation		1		1
UTV/ATV	1	3		4
Other				
TOTAL	30	47	30	107

Table 23. Resources Assigned to Central Zone Incidents – OVERHEAD

Overhead	D1	CAS	MIS	TOTAL
TOTAL	64	88	39	191

SOUTH ZONE STATISTICS

Table 24. South Zone Total Fires

Total Fires for Season	44
Acres	3526.3
Number of Lightning Days	Unavailable

Table 25. South Zone Fires and Causes

Cause	D4		SJS		PDS		CDT		TOTAL	
	#	Acres	#	Acres	#	Acres	#	Acres	#	Acres
Lightning	7	21.4	9	22.4	1	0.1	1	0.1	18	44.0
Equipment Use			11	68.2	1	0.5			12	68.7
Smoking			1	0.1					1	0.1
Campfire	1	2386.0			1	0.1			2	2386.1
Debris Burning	1	0.1	2	6.1	1	4.0			4	10.2
Arson	1	0.1					1	0.2	2	0.3
Children										
Railroad					1	3.0	1	1.5	2	4.5
Miscellaneous			1	0.1	1	1010.0			2	1010.1
Human/Unknown	1	2.3							1	2.3
TOTAL	11	2409.9	24	96.9	6	1017.7	3	1.8	44	3526.3

Table 26. South Zone Detection

Method	D4	SJS	PDS	CDT	TOTAL
Lookout	2				2
Agency Employee	2	6	1		9
Permittee/Cooperator		3			3
Aerial Observer	1		1		2
Other Aircraft	2				2
Other (Public)	4	15	4	3	26
TOTAL	11	24	6	3	44

Table 27. South Zone Other Incident Reports

Type	D4	SJS	PDS	CDT	TOTAL
No Action		1	1		2
False Alarm	4	14	12	6	36
Mutual Aid		2	4	1	7
Campfire	1	3			4
Misc Law, Medical, etc	4	1			5
TOTAL	9	21	17	7	54

Table 28. Resources Assigned to South Zone Incidents – AIRCRAFT

Aircraft	D4	SJS	PDS	CDT	TOTAL
Airtanker, Type 1-2-VLAT	9	1	15		25
Airtanker, Type 3-4 (SEAT)	30	12	10		52
Helicopter, Type 1	7				7
Helicopter, Type 2	18	6	2		26
Helicopter, Type 3	6	3	3		12
Air Attack/ASM/Lead Plane	18	8	8		34
Smokejumper A/C	2				2
TOTAL	90	30	38	0	158

Table 29. Resources Assigned to South Zone Incidents – CREWS

Crews	D4	SJS	PDS	CDT	TOTAL
Crew, Type 1	3		1		4
Crew, Type 2-IA	7	7	2		16
Crew, Type 2			2		2
TOTAL	10	7	5	0	22

Table 30. Resources Assigned to South Zone Incidents – EQUIPMENT

Equipment	D4	SJS	PDS	CDT	TOTAL
Engine, Type 1-2		1			1
Engine, Type 3			2		2
Engine, Type 4	3	10	2	2	17
Engine, Type 5		27	14		41
Engine, Type 6	26	23	19	2	70
Engine, Type 7		1		2	3
Water Tender	10	16	11		37
Dozer	6	13	11		30
Excavator	3	10	6		19
Palm IR					
Skidder/Skidgine	1		1		2
Transport (Lowboy, etc)		5	4		9
Transportation	5	4			9
UTV/ATV	6	2	1		9
Other	3	2	7		12
TOTAL	63	114	78	6	261

Table 31. Resources Assigned to South Zone Incidents – OVERHEAD

Overhead	D4	SJS	PDS	CDT	TOTAL
TOTAL	150	145	88	0	383

INCIDENT MANAGEMENT AND TEAMS

Table 32. Large Incidents

Incident Name	District	Dates			Cause	Final Size	Est. Cost
		Start	Contain	Out			
North Fork Hughes	IPNF-Priest Lake	06/30/17	10/12/17	11/13/17	Lightning	4975	\$700,000
Buck	IPNF-St. Joe	08/07/17	09/28/17	11/09/17	Human	2386	\$3,500,000
Strychnine	IDL-Ponderosa	09/02/17	09/14/17	10/19/17	Human	1010	\$3,000,000

Table 33. Wildland Fires Managed for Multiple Objectives

Incident Name	District	Dates		Cause	Final Size
		Start	Out		

While some fires had limited action taken due to safety and priorities, none were specifically managed for multiple objectives.

Table 34. CDC Zone Type 3 Team Assignments

Incident Name	Incident Commander	Date	Days Assigned	Jurisdiction
ID-CMS-000340 Powerline	Jason Svancara	07/16/17	7	State of Idaho
ID-CMS-000340 Powerline	Jason Svancara	07/24/17	7	State of Idaho
ID-IPF-000415 Roundhouse	Jason Svancara	08/07/17	15	Forest Service
ID-IPF-000439 Buck		08/13/17		Forest Service
MT-HLF-000146 Park Creek	Rod Weeks	08/16/17	37	Forest Service
ID-SJS-000573 C.O.D.	Jason Svancara	08/31/17	14	State of Idaho
ID-PDS-000599 Strychnine		09/03/17		
OR-CGF-000493 Eagle Creek	Rod Weeks	10/02/17	13	Forest Service

Table 35. North Idaho Type 2 Incident Management Team Assignments

Incident Name	Incident Commander	Date	Days Assigned	Jurisdiction
MT-NCA-017026 Witten	Mike Almas Jim Grant (DPIC)	07/08/17	11	BIA
MT-MCD-0000163 Tongue River Complex		07/10/17		BLM
ND-NDF-170703 Magpie	Shawn Pearson Mark Grant (DPIC)	07/10/17	8	Forest Service
MT-LNF-001336 Sunrise	Shawn Pearson Mark Grant (DPIC)	07/21/17	17	Forest Service
ID-CMS-000333 Corral Creek	Mike Almas Jim Grant (DPIC)	07/16/17	11	State of Idaho
MT-BDF-002217 Meyers	Mike Almas Roger Staats (DPIC)	07/30/17	16	Forest Service
MT-LNF-001463 Sapphire Complex	Shawn Pearson Mark Grant (DPIC)	8/10/17	17	Forest Service
MT-LNF-001463 Sapphire Complex	Mike Almas Roger Staats (DPIC)	8/23/17	17	Forest Service
MT-KNF-000174 Caribou	Shawn Pearson Mark Grant (DPIC)	8/30/17	21	Forest Service
MT-LNF-001288 Lolo Peak	Mike Almas Roger Staats (DPIC)	9/17/17	12	Forest Service

CREWS

Six Agency Type 2 crews were mobilized by CDC during the 2017 season.

Table 36. CDC Agency Crew Assignments

Date	Resource Order # & Name of Incident	Resource Assigned	CRWB CRWB (T)	#'s by Unit	Unit Zone	DMOB
06/17/17	AZ-TNF-000004 2017 TNF Regional Severity, C-23	IPF #1 T2-IA	Aaron Babin Megan Primmer (T)	D1-19 D4-1	IPF	07/07/17
06/19/17	NM-R03-000005 2017 R3 Regional Support, C-101					
06/22/17	Reassigned to AZ-CNF-000291 2017 AZ-CNF PREPO ABCD MISC, C-5					
06/24/17	Reassigned to AZ-CNF-000581 SADDLE, C-2	IDS #1 T2-IA	Casey Schelin Paul Reynolds (T)	MIS-7 CAS-7 PLS-2 CDS-2 D8-2	CZ	07/08/17
06/27/17	Reassigned to AZ-CNF-000589 MINK, C-5					
07/02/17	Reassigned to AZ-CNF-000618 BURRO, C-15					
06/23/17	UT-SWS-000218 Brianhead, C-36	IDS #2 T2-IA	Ed Kassa Gabe Kearm (T)	PLS-4 POS-9 KVS-6 CDS-1	NZ	07/09/17
06/30/17	SD-SDS-170362 Brady, C-2	IPF #2 T2-IA	Casey Lovell Paul Ratcliff (T)	D4-8 SJS-6 PDS-4 CDT-4	SZ	07/13/17
07/02/17	Reassigned to CO-RTX-000161 Mill Creek, C-6					
08/09/17	ID-IPF-000439 Buck, C-4	IPF #3 T2-IA	Casey Lovell	D1-12 D4-6 PH-1	IPF	08/18/17
10/11/17	CA-NEU-026295 NEU WIND COMPLEX, C-45	IDS #3 T2-IA	Cody Griffin Megan Primmer (T)	CAS-1, PLS-3, POS-1 D4-11, D6-3, D7-1, D8-1	CDC	10/19/17

Shaded indicates agency-specific requests.

Previous year crew mobilizations:

2016 - 12 crews, in- and out-of-area
 2015 - 3 crews, out-of-area
 2014 - 8 crews, in- and out-of-area
 2013 - 10 crews, in- and out-of-area
 2012 - 12 crews, out-of-area
 2011 - 12 crews, out-of-area

2010 - 6 crews, in- and out-of-area (2 agency specific)
 2009 - 10 crews/2 mods, in- and out-of-area
 2008 - 9 crews, in- and out-of-area
 2007 - 4 crews, in- and out-of-area
 2006 - 10 crews, in- and out-of-area
 2005 - 18 crews, in- and out-of-area

The Idaho Panhandle Hotshots were mobilized six times during the 2017 season.

Table 37. Idaho Panhandle IHC Assignments

Date	Resource Order # & Name of Incident	Days Assigned	DMOB
05/10/17	MN-SUF-000004 2017 SUF WZ Rx Preparedness, C-2	18	05/27/17
06/21/17	UT-SWS-000218 Brianhead, C-13	17	07/07/17
07/10/17	MT-MCD-000163 TONGUE RIVER COMPLEX, C-4		
07/12/17	Reassigned to MT-NWS-006008 Rogers Mountain, C-17	16	07/25/17
07/17/17	Reassigned to MT-LNF-001239 Sliderock, C-6		
07/29/17	MT-LNF-001336 Sunrise, C-25	14	08/11/17
08/14/17	MT-LNF-001464 Rice Ridge, C-23	16	08/29/17
09/02/17	MT-KNF-000174 Caribou, C-6	15	09/16/17

CDC again hosted two National Type 2-IA Firefighter Crew contracts with Miller Timber Services, Inc. During the 2017 season, Miller crews were mobilized twelve times; they were used extensively on-zone from mid-July until mid-September.

Table 38. Contract Crew Assignments

Date	Resource Order # & Name of Incident	Resource Assigned	Days Assigned	DMOB
06/27/17	NM-R03-000005 2017 R3 REGIONAL SUPPORT, C-130	Miller Timber Services, Inc. NCC-11A	16	07/12/17
06/28/17	AZ-PNF-000904 Goodwin, C-36			
07/05/17	AZ-ASF-000531 SH Creek, C-5			
07/09/17	AZ-ASF-000003 2017 AZ-ASF MISC ABCD, C-2			
06/27/17	UT-SWS-000218 Brianhead, C-63	Miller Timber Services, Inc. NCC-11B	17	07/13/17
07/04/17	Reassigned to UT-NUC-000003 2017 UT-NUC GACC Support/Preposition, C-7			
07/04/17	Reassigned to NV-ELD-040067 Hatchery, C-2			
07/06/17	Reassigned to NV-ELD-040078 Hobson, C-1			
07/09/17	Reassigned to NV-WID-020135 Dry Lake, C-1			
07/09/17	Reassigned to NV-WID-020138 Barrett Springs, C-3			
07/10/17	Reassigned to NV-SFC-030163 2017 NV-SFC GACC Support / Preposition, C-6			
07/10/17	Reassigned to NV-HTF-030363 Farad, C-1			
07/15/17	ID-NCF-000302 Mink Peak, C-1	Miller Timber Services, Inc. NCC-11A	16	07/30/17
07/15/17	Reassigned to ID-NCF-000310 Brushy, C-4			
07/19/17	Reassigned to ID-IPF-000295 Trestle Peak, C-1			
07/19/17	Reassigned to ID-IPF-000001 2017 IPNF Preposition, C-1			
07/19/17	Reassigned to ID-IPF-000295 Trestle Peak, C-2			
07/16/17	ID-SJS-000254 Mica Berry, C-1	Miller Timber Services, Inc. NCC-11B	16	07/31/17
07/18/17	Reassigned to ID-IPF-000290 Beaver Creek, C-1			
07/20/17	Reassigned to ID-IPF-000295 Trestle Peak, C-3			
07/25/17	Reassigned to ID-IPF-000001 2017 IPNF Preposition, C-3			
08/04/17	ID-IPF-000001 2017 IPNF Preposition, C-5	Miller Timber Services, Inc. NCC-11A	22	08/25/17
08/05/17	Reassigned to ID-IPF-000415 Roundhouse, C-2			
08/12/17	Reassigned to ID-SJS-000452 Dusty Sunset, C-2			
08/13/17	Reassigned to ID-IPF-000001 2017 IPNF Preposition, C-9			
08/17/17	Reassigned to ID-CAS-000500 Daisy, C-1			
08/22/17	Reassigned to ID-SJS-000518 Crosby, C-1			
08/04/17	ID-IPF-000001 2017 IPNF Preposition, C-6	Miller Timber Services, Inc. NCC-11B	16	08/19/17
08/04/17	Reassigned to ID-IPF-000415 Roundhouse, C-1			
08/13/17	Reassigned to ID-IPF-000439 Buck, C-10			

Date	Resource Order # & Name of Incident	Resource Assigned	Days Assigned	DMOB
08/23/17 08/28/17 08/31/17 09/04/17	ID-SJS-000518 Crosby, C-2 Reassigned to ID-IPF-000545 Gibson Point, C-1 Reassigned to ID-SJS-000573 C.O.D, C-3 Reassigned to ID-PDS-000599 Strychnine, C-1	Miller Timber Services, Inc. NCC-11B	22	09/13/17
08/29/17 08/29/17 09/03/17 08/29/17	ID-IPF-000001 2017 IPNF Preposition, C-10 Reassigned to ID-IPF-000552 Boundary, C-1 Reassigned to ID-PDS-000599 Strychnine, C-4 ID-IPF-000001 2017 IPNF Preposition, C-10	Miller Timber Services, Inc. NCC-11A	16	09/13/17
09/17/17	MT-KNF-000174 Caribou, C-44	Miller Timber Services, Inc. NCC-11B	16	10/02/17
10/11/17	CA-NEU-026295 NEU Wind Complex, C-43	Miller Timber Services, Inc. NCC-11A	8	10/18/17
10/11/17	CA-NEU-026295 NEU Wind Complex, C-44	Miller Timber Services, Inc. NCC-11B	9	10/19/17
12/21/17 12/25/17	CA-VNC-103156 Thomas, C-25072 Reassigned to CA-BDF-015816 2018 BDF/OSC SUPPORT, C-8	Miller Timber Services, Inc. NCC-11A	9	12/29/17

EQUIPMENT

Table 39. Out-of-Area Agency Engine Assignments

Agency engines were mobilized 28 times; all but 2 were agency specific or name requests. There were also 11 engine crew replacements processed.

Shaded indicates agency-specific requests.

Date	Resource Order # & Name of Incident	Resource Assigned	ENGB, Crewmember(s)	Unit/Zone	Days Assigned	DMOB
03/27/17	AZ-CNF-000007 2017 R1/R3 AGMT AZ-CNF PREPO, E-2	E-611 T-6 R1/R3	ENGB-Mann, Feltmann, Miller, McClintick	D1	106	06/10/17
03/30/17	AZ-CNF-000006 2017 AZ-CNF FIRE SUPPORT, E-2		ENGB-Weeks, Ratcliffe, Miller, McClintick (4/11)			
04/13/17	AZ-FHQ-000188 RANGE, E-4		ENGB-Pearson, Feltmann, Primmer, Miller (4/25)			
04/21/17	AZ-CNF-000002 2017 AZ-CNF SEVERITY, E-3		ENGB-Babin, Moore(T), Herndon, Noah (5/16)			
04/26/17	AZ-CNF-000001 2017 AZ-CNF ABCD MISC, E-16		ENGB-Feltmann, Jerome, Duran, Hill (6/6)			
05/09/17	AZ-CNF-000291 2017 AZ-CNF PREPO ABCD MISC, E-4		ENGB-Pearson, Heyn, Norman-NCF (6/27)			
05/11/17	AZ-CNF-000007 2017 R1/R3 AGMT AZ-CNF PREPO, E-6					
05/12/17	AZ-CNF-000291 2017 AZ-CNF PREPO ABCD MISC, E-14					
05/28/17	AZ-CNF-000386 PARKER, E-1					
06/01/17	AZ-A3S-004214 KELLOGG, E-5					
06/02/17	AZ-CNF-000007 2017 R1/R3 AGMT AZ-CNF PREPO, E-9					
06/12/17	AZ-A3S-004663 SAN ANTONIO, E-5					
06/14/17	AZ-CNF-000517 FLYING R, E-8					
06/20/17	AZ-A3S-004964 ENCINO, E-7					
04/11/17	MN-SUF-000003 2017 SUF Fire Support, E-1	E-641 T-6 USFS only	ENGB-Tellessen, Ratcliff, Ford	D4	19	04/29/17
04/25/17 in place	MS-MNF-050009 FY2017 NMSF Support, E-1	E-672 T-6 in place	ENGB-Hirst, Langford, Reinbold ENGB-Kucera, Koopman, Bruno (5/13)	NZ	41	06/04/17
05/09/17	MI-HIF-170018 2017 MI - HIF / Prepared - Prepo, E-5	E-4603 T-6 USFS only	ENGB-Ratcliffe, Nichols, Melvin, Stewart, Figueroa	D1	20	05/28/17
05/10/17	MN-SUF-000004 2017 SUF WZ Rx Preparedness, E-3	E-661 T-6 USFS only	ENGB-King, Huls, CClemenson, TClemenson	NZ	14	05/23/17
06/08/17	AZ-CNF-000007 2017 R1/R3 AGMT AZ-CNF PREPO, E-11	E-671 T-6 R1/R3	ENGB-CClemenson, Garcia, Cummings, Kohl, Ruskey, Huls	NZ	40	07/17/17
06/10/17	AZ-CNF-000291 2017 AZ-CNF PREPO ABCD MISC, E-23		ENGB-Gidley, CWinebark, Koester, Jacobson, Watterson (7/1)			
06/14/17	AZ-CNF-000517 FLYING R, E-11					
06/09/17	AZ-CNF-000007 2017 R1/R3 AGMT AZ-CNF PREPO, E-12	E-81 T-6 R1/R3	ENGB-Hirst, Wright, Hill, Bruno, Lemieux, Harper-Johnston	NZ	33	07/11/17
06/11/17	AZ-CNF-000464 LIZARD, E-128		ENGB-Meek, Washburn, Friebus, Scher, Devitt (6/25)			
06/21/17	AZ-CNF-000291 2017 AZ-CNF PREPO ABCD MISC, E-45					
06/08/17	AZ-CNF-000007 2017 R1/R3 AGMT AZ-CNF PREPO, E-14	E-411 T-4 R1/R3	ENGB-Mann, Miller(T), Stewart, Rodriguez, Vershum, Shaw	D1	25	07/02/17
06/10/17	AZ-CNF-000291 2017 AZ-CNF PREPO ABCD MISC, E-24					
06/11/17	AZ-CNF-000464 LIZARD, E-130					
06/24/17	AZ-CNF-000581 SADDLE, E-2					

Date	Resource Order # & Name of Incident	Resource Assigned	ENGB, Crewmember(s)	Unit/ Zone	Days Assigned	DMOB
06/09/17 06/13/17 06/21/17	AZ-KNF-000388 2017 R1/R3 AGREEMT KNF PREPO, E-1 AZ-TNF-000780 Highline, E-165 AZ-COF-000342 COF 2017 MISC Human, E-7	E-661 T-6 R1/R3	ENGB-King, Vickers, Henrickson, Bashir, McKay, TClemenson, Wagner	NZ	33	07/11/17
06/09/17 06/13/17 06/22/17	AZ-KNF-000388 2017 R1/R3 AGREEMT KNF PREPO, E-3 AZ-TNF-000780 Highline, E-166 AZ-COF-000342 COF 2017 MISC Human, E-6	E-4601 T-6 R1/R3	ENGB-Airhart, Ratcliff, Chambers, Rivera ENGB-Scheffellaier, Kelsey, Hathhorn, McNair, Estrada (6/23)	D4	32	07/10/17
06/09/17 06/13/17 06/22/17 06/23/17 06/26/17	AZ-KNF-000388 2017 R1/R3 AGREEMT KNF PREPO, E-4 AZ-TNF-000780 Highline, E-168 AZ-COF-000342 COF 2017 MISC Human, E-8 AZ-COF-000353 COF 2017 Severity, E-3 AZ-COF-000002 COF 2017 MISC ABC Lightning, E-1	E-621 T-6 R1/R3 E-641 T-6 Replace	ENGB-North, Sayles, Roesner, Williams ENGB-Patton, Suchoski, Scheel, King, Lambert	D4 D4	18 18	06/26/17 07/10/17
06/21/17	ID-SCC-000069 2017 SCC GACC Support / Prepo, E-7	E-3251 T-5 IDL	ENGB-Asbury, Thaut, Truscott	SJS	7	06/27/17
06/21/17 06/28/17	NM-SNF-000171 2017 SNF Incident Support, E-3 NM-SNF-000001 2017 Misc ABC, E-8	E-672 T-6 NR	ENGB-Mulvaney, Koopman(T), KWinebark, Nix, Normandeau, Stagner, Milkereit, McBroome	NZ	26	07/16/17
06/26/17	AZ-PHD-000660 FY17 PHD National Severity, E-13	E-4603 T-6 BLM	ENGB-Jameson, Bruce, Millar, Thompson ENGB-Ratcliffe (6/30)	COD D4 SO D1	23	07/18/17
06/28/17 07/10/17 07/10/17	ID-SIS-170009 2017 SITPA Support, E-1 ID-NCF-000155 2017 GAC Preparedness/Prepo, E-4 ID-NCF-000202 2017 NCF Fire Support/Preposition, E-5	E-4151 T-5 NR	ENGB-Brown, Spence(T), Schaper, Elliott	PDS	14	07/11/17
07/08/17 07/08/17	ID-CMS-000164 2017 IDL-CMS Preparedness/Prepo, E-1 ID-CMS-000240 Whitebird, E-12	E-4152 T-5 NR	ENGB-McManus, Lewallen, Briggs	PDS	2	07/09/17
07/13/17 07/14/17 07/17/17	ID-NCF-000202 2017 NCF Fire Support/Preposition, E-7 ID-NCF-000273 Horse, E-1 ID-MCS-000366 Wagon, E-1	E-4152 T-5 NR	ENGB-Brown, Easley, Lewallen	PDS	14	07/26/17
07/14/17	ND-FBA-000050 2017 FBA GPR Severity, E-3	E-621 T-6 Fed only	ENGB-North, Primmer(T), Sayles, Lietz, Kelsey	D4	18	07/31/17
07/14/17	WA-SPD-001404 SPD 2017 Short Term Severity	E-611 T-6 NR	ENGB-TMiller, Moore(T), Ballard, Waters, Rodriguez	D1	15	07/28/17
07/20/17	MT-LNF-000249 FY17 LOLO NF ABCD, E-11	E-4603 T-6 NR	ENGB-Bowcut, Fahlenkamp, Vershum	D1	8	07/27/17
07/22/17	MT-MCD-000252 LODGEPOLE COMPLEX, E-77	E-2262 T-6	ENGB-Hixson, Dipofi, Maret, Mason	MIS	7	07/28/17
07/29/17	ID-NCF-000202 2017 NCF Fire Support/Preposition, E-12	E-4152 T-5 NR	ENGB-Brown, Briggs, Foss	PDS	14	08/11/17
07/29/17 08/05/17 08/08/17 08/11/17 08/11/17	ID-CMS-000340 Powerline, E-26 ID-CMS-000546 Culdesac, E-3 ID-CMS-000164 2017 IDL-CMS Preparedness/Prepo, E-2 ID-CMS-000517 Old White Bird Road, E-4 ID-CMS-000546 Cherry Lane, E-5	E-2352 T-6 NR	ENGB-Wilkerson, Allen, Kennaly	POS	15	08/12/17

Date	Resource Order # & Name of Incident	Resource Assigned	ENGB, Crewmember(s)	Unit/ Zone	Days Assigned	DMOB
08/01/17	MT-LNF-001463 Sapphire Complex, E-66	E-2262 T-6	ENGB-Lander, Livingston(T), Ballard ENGB-Hixson, DHicks(T), Thompson (8/14)	MIS	29	08/29/17
08/11/17	OR-WSA-000046 Severity 3 Aug17, E-11	E-5561 T-6 NR	ENGB-Tomaskin, SiJohn, Arroyo	CDT	15	08/25/17
08/29/17 08/30/17 08/30/17 08/31/17 09/06/17 09/06/17 09/08/17	ID-CMS-000164 2017 IDL-CMS Preparedness/Prepo, E-3 ID-MCS-000739 Yellow Bull, E-6 ID-CMS-000769 Maier, E-1 ID-CTS-000820 Moon Dance, E-1 ID-PDS-000599 Strychnine, E-82 ID-SJS-000619 Peterson, E-8 ID-PDS-000599 Strychnine, E-86	E-2151 T-5 NR	ENGB-Reynolds, Luhnnow, Belmont	KVS	14	09/11/17
08/30/17 08/30/17 08/31/17	ID-CMS-000164 2017 IDL-CMS Preparedness/Prepo, E-8 ID-CMS-000786 Zaca, E-6 ID-CTS-000820 Moon Dance, E-1	E-2262 T-6 NR	Largen, Petersen, Mason, Eaton	MIS	8	09/06/17
09/06/17	MT-KNF-000222 West Fork, E-6	E-83 T-4 NR	ENGB-TClemenson, Huls, Bruno, Smith, KWinebark	NZ	17	09/22/17

Previous year crew mobilizations:

- 2016, 29 engines dispatched out-of-area with 22 agency specific requests and 5 crew replacements
- 2015, 17 engines dispatched out-of-area with 4 agency specific requests
- 2014, 32 engines dispatched out-of-area with 18 agency specific requests and 4 crew replacements
- 2013, 31 engines dispatched out-of-area with 14 agency specific requests and 1 crew replacement
- 2012, 51 engines dispatched out-of-area with 2 agency specific requests and 5 crew replacements
- 2011, 29 engines dispatched out-of-area with 14 agency specific requests and 14 crew replacements
- 2010, 8 engines dispatched out-of-area, all were agency specific requests
- 2009, 10 engines dispatched out-of-area
- 2008, 12 engines dispatched out-of-area
- 2007, 25 engines dispatched out-of-area
- 2006, 46 engines dispatched out-of-area
- 2005, 40 out-of-area assignments, includes reassignments and Private engines
- 2004, 7 engines dispatched out-of-area

Table 40. Local Government Resource Out-of-Area Assignments

Date	Resource Order # & Name of Incident	Resource Assigned	Days Assigned	DMOB
07/20/17	MT-HLF-000146 Park Creek, E-69	ENGINE - T6 - Sagle FD - 1251 (Sagle FD - 1251)	21	08/09/17
08/22/17	ID-NCF-000521 Hanover, E-192	AMBULANCE - T1 - Boundary Ambulance Service	8	08/29/17

Several local government resources were used on local incidents.

Table 41. Contracted Resources

A significantly larger number of vendors signed up their equipment in the CDC zone under the federal VIPR process in 2017 than in previous years. These resources were then dispatched using Dispatch Priority Lists.

Contracted Equipment awarded in CDC Zone	# of Resources	Dispatches (in- and out-of-area)
Bus, Crew Carrier	1	
Dozer, Type 1	1	
Dozer, Type 2	7	3
Dozer, Type 3	3	1
Engine, Type 4	1	2
Engine, Type 5	1	2
Engine, Type 6	5	15
Excavator, Type 1	3	2
Excavator, Type 2	2	2
Excavator, Type 3	2	1
Excavator, Type 4	1	
Faller, Single	10	
Faller, Module	5	6
Gray Water Truck	3	
Handwashing Station (Trailer mounted)	5	
Heavy Equipment Task Force	1	1
Lowboy, Type 1	2	1
Potable Water Truck	1	1
Service – Mobile Mechanic, Type 1	2	
Service – Mobile Mechanic, Type 2	2	1
Skidder, Type 2	1	
Skidgine, Softtrack	1	1
Skidgine, Type 1	1	2
Water Tender (Support), Type 2	9	14
Weed Washing Unit, Type 1	1	

Table 42. DPL Contracted Resource Out-of-Area Assignments

Date	Resource Order # & Name of Incident	Resource Assigned	Days Assigned	DMOB
07/10/17 07/11/17	MT-NWS-003004 LAZIER CREEK 3, E-9 Reassigned to MT-NWS-006008 ROGERS MOUNTAIN, E-131	ENGINE - T4 - Inland Forest Management, Inc. - 252085 - 006	14	07/23/17
07/11/17	MT-NWS-006008 ROGERS MOUNTAIN , E-32	ENGINE - T6 - AL S TOWING - A59350 - 8	11	07/21/17
07/11/17 07/17/17	MT-NWS-006008 ROGERS MOUNTAIN , E-33 Reassigned to ID-CMS-000333 CORRAL CREEK, E-74	ENGINE - T6 - Inland Forest Management, Inc. - A44201 - 213	13	07/23/17
07/11/17	MT-NWS-006008 ROGERS MOUNTAIN , E-34	ENGINE - T6 - Inland Forest Management, Inc. - A51153 - 007	13	07/23/17
07/11/17 07/17/17	MT-NWS-006008 ROGERS MOUNTAIN , E-41 Reassigned to ID-CMS-000333 CORRAL CREEK, E-75	ENGINE - T6 - JENQUINE, JOSHUA - A70721 - E-8	13	07/23/17
07/11/17 07/17/17	MT-NWS-006008 ROGERS MOUNTAIN , E-42 Reassigned to ID-CMS-000333 CORRAL CREEK, E-76	ENGINE - T5 - Inland Forest Management, Inc. - C54728 - 215	18	07/28/17
07/23/17	MT-BDF-002217 MEYERS , E-7	POTABLE WATER TRUCK - T2 - CDC001 - Clearwater Tech - 2FUJDSEB3VA841134	62	09/22/17
07/24/17	MT-LNF-001336 SUNRISE, E-115	WATER TENDER - SUPPORT - T2 - NORTH WEST TRUCKING, LLC - 708093 - NWT 01	54	09/15/17
07/24/17 08/29/17 09/01/17	MT-LNF-001288 LOLO PEAK, E-25 Reassigned to MT-BRF-017218 NELSON CREEK, E-13 Reassigned to MT-LNF-001288 LOLO PEAK , E-414	HE TASK FORCE - CDC001 - Timbered Rangeland Management	46	09/07/17
07/25/17	MT-LNF-001336 SUNRISE, E-122	ENGINE - T6 - JENQUINE, JOSHUA - A70721 - E-8	15	08/08/17
07/25/17	MT-LNF-001336 SUNRISE, E-123	ENGINE - T6 - AL S TOWING - A59350 - 8	16	08/09/17
07/25/17 08/24/17 08/30/17 08/31/17	MT-BDF-002217 MEYERS , E-96 Reassigned to MT-CES-002344 MAUER MOUNTAIN, E-14 Reassigned to MT-BDF-000200 2017 B-D NF ABCD MISC, E-15 Reassigned to MT-BDF-002217 MEYERS, E-333	ENGINE - T6 - Inland Forest Management, Inc. - A44201 - 213 (ID-CDC)	8	09/03/16
07/30/17	MT-LNF-001336 SUNRISE, E-165	ENGINE - T6 - SGS NORTH WEST, LLC - A16185 - 37	27	08/25/17
07/30/17	MT-LNF-001336 SUNRISE, E-166	ENGINE - T6 - Inland Forest Management, Inc. - A44201 - 213	53	09/20/17
07/30/17	MT-LNF-001336 SUNRISE, E-167	ENGINE - T6 - Inland Forest Management, Inc. - A51153 - 007	56	09/23/17
07/31/17	MT-LNF-001463 SAPPHIRE COMPLEX, E-45	ENGINE - T5 - Inland Forest Management, Inc. - C54728 - 215	50	09/18/17
08/01/17	MT-LNF-001288 LOLO PEAK, E-141	WATER TENDER - SUPPORT - T2 - RICHARDSON TREE CARE, INC - 418408 - 01	51	09/20/17
08/01/17	MT-LNF-001288 LOLO PEAK, E-142	WATER TENDER - SUPPORT - T2 - CLEARWATER TECH LLC - 495572 - 1	52	09/21/17
08/01/17 08/09/17	MT-FHA-000105 LIBERTY, E-257 Reassigned to MT-LNF-001464 RICE RIDGE, E-207	WATER TENDER - SUPPORT - T2 - MARTIN, CRAIG - 492771 - 41	47	09/16/17
08/03/17	MT-LNF-001464 RICE RIDGE, E-91	WATER TENDER - SUPPORT - T2 - OXFORD, INC. - 60740K - 17	61	10/02/17

Date	Resource Order # & Name of Incident	Resource Assigned	Days Assigned	DMOB
08/07/17	MT-LNF-001463 SAPPHIRE COMPLEX, E-132	WATER TENDER - SUPPORT - T2 - PRIMMER, JAMES D - 563820 - 3	35	09/10/17
08/10/17	MT-LNF-001464 RICE RIDGE, E-205	Service - Mobile Mechanic - T2 - Light - WORKFORCE SERVICES, INC. - 102403 - 700-003	52	09/30/17
08/13/17	MT-FHA-000105 LIBERTY, E-354	ENGINE - T6 - AL S TOWING - A59350 - 8	10	08/22/17
08/14/17	MT-LNF-001336 SUNRISE, E-298	ENGINE - T6 - JENQUINE, JOSHUA - A70721 - E-8	12	08/25/17
08/14/17	MT-LNF-001464 RICE RIDGE, E-250	WATER TENDER - SUPPORT - T2 - OXFORD, INC. - 514701 - 8	52	10/04/17
08/14/17	MT-NWS-006020 TAMARACK, E-22	WATER TENDER - SUPPORT - T2 - OXFORD, INC. - 645081 - 20	13	08/26/17
08/19/17	MT-FHA-000105 LIBERTY, E-387	SKIDGINE - SOFTTRACK - SOFT TRACK ATTACK, INC. - A-4129 - 005	4	08/22/17
08/21/17	MT-LNF-001288 LOLO PEAK, E-517	MODULE - FALLER - WESTWOOD LLC - EST M1 - WEST M1	5	08/25/17
08/21/17	MT-FHA-000105 LIBERTY, E-391	WATER TENDER - SUPPORT - T2 - PRIMMER, JAMES D - F94050 - 1	26	09/15/17
08/22/17	MT-LNF-001288 LOLO PEAK, E-339	SKIDGINE - T1 - SOFT TRACK ATTACK, INC. - 974714 - 560	5	08/26/17
08/22/17	ID-NCF-000521 HANOVER, E-193	LOWBOY - T1 - Fousts Inc - 448014 - LH1783	6	08/27/17
08/27/17	MT-KNF-000174 CARIBOU, E-14	WATER TENDER - SUPPORT - T2 - OXFORD, INC. - 645081 - 20	22	09/17/17
08/27/17	MT-KNF-000174 CARIBOU, E-16	ENGINE - T6 - SGS NORTH WEST, LLC - A16185 - 37	15	09/10/17
08/27/17	MT-HLF-000179 ALICE CREEK, E-1011	ENGINE - T6 - JENQUINE, JOSHUA - A70721 - E-8	21	09/16/17
08/28/17	MT-LNF-001464 RICE RIDGE, E-371	ENGINE - T6 - AL S TOWING - A59350 - 8	16	09/12/17
08/31/17	MT-LNF-001464 RICE RIDGE, E-397	SKIDGINE - T1 - SOFT TRACK ATTACK, INC. - 974714 - 560	19	09/18/17
09/01/17	MT-KNF-000174 CARIBOU, E-95	MODULE - FALLER - SWEDBERG CONTRACTING CORP. - ULE-03 - ID-CDC-M03	13	09/13/17
09/01/17	MT-KNF-000174 CARIBOU, E-97	MODULE - FALLER - SWEDBERG CONTRACTING CORP. - ULE-02 - ID-CDC-M02	14	09/14/17
09/02/17	MT-LNF-001463 SAPPHIRE COMPLEX, E-258	EXCAVATOR - T1 - Fousts Inc - 90043 - A2015	17	09/18/17
09/12/17	MT-KNF-000174 CARIBOU, E-219	ENGINE - T6 - SGS NORTH WEST, LLC - A16185 - 37	13	09/24/17
09/13/17	MT-KNF-000225 MOOSE PEAK, E-23	MODULE - FALLER - SWEDBERG CONTRACTING CORP. - ULE-03 - ID-CDC-M03	10	09/22/17
09/19/17	MT-LNF-001811 HIGHWAY 200 COMPLEX, E-269	EXCAVATOR - T3 - AKRE LOGGING, LLC - N31227 - 94	48	10/05/17

In addition, four dozers, three excavators, five faller modules, and four water tenders were used on local incidents.

OVERHEAD

Table 43. Overhead Positions filled for Out-of-Area Assignments

Position	North Zone						Central Zone						South Zone				AD IPF	UTF
	KVS	POS	PLS	D6	D7	D8	IPF	CAS	CDS	COD	MIS	D1	SJS	PDS	D4	CDT		
AADM											1							
ABRO			2					1										
ACDP				1			2											
ARPA														2				
ASGS			4				3										4	
ATBM							9										2	
ATGS							22								35		74	
BAES							1											
BCMG		3		2			1	1						3	3			
BHAV				1						1								
BUYL							1											
BUYM							39		1									
CISM									2									
COML		6					3											
COMT							6										2	
COST							2			1		3						
CRWB				6	5				1			1						
DIVS	1			2	1	1	4			1	1	13	1		5		1	
DMOB																	5	
DOCL				1														
DRIV														2				
EDSD																	4	
EDSP																	4	
EMPF																	3	
ENGB						1			1			2						
EQPM			3							1				1			1	
EQTR	1	2													1		3	
FACL							4											
FAL2			1	1														
FBAN							1		1								1	
FDUL																	4	
FELB									1									
FFT1	4		1	1	1	2			4			7						
FFT2		1							5		4	5	2	1			1	
FOBS																	3	
FSC1							4										1	
FSC2												1					6	
FSC3									1									
FWPT							1											
GISS												2						
GSUL			3															
HEB1																	1	
HEB2							1										2	
HECM	2			3			23		3		2						10	
HEQB		5		5	1	1			1		1	2		1			4	
HLCO																	1	
HMGB				1			12		3				3				9	
HRSP																	3	
IADP				2			1		1								5	
ICPI												1					3	

Position	North Zone						Central Zone						South Zone				AD IPF	UTF	
	KVS	POS	PLS	D6	D7	D8	IPF	CAS	CDS	COD	MIS	D1	SJS	PDS	D4	CDT			
ICT2							6		4			4							1
ICT3								1		4		6		2					
ICT4				4	4	4									2				1
ICT5		8		4		2			2										
IMST																			1
INBA							1		1										
INCM							1												
INVF		1							15										1
IRIN									1										
ITSS							4				1								
LOFR											2								
LSC2		3				4													
LSC3									2										
LTAN																			1
MEDL																		5	
MXMS							1												
OPS3													1						
ORDM									2					1	3				
OSC2							1					7			4				1
PETL											1								1
PETM												1							1
PIO2				2		3	2		1									5	1
PIOF		1							3			1							2
PLDO							1												
PSC2									4		1								
PSC3													1						
PTRC	2	4	1					1	1						1			2	3
RADO		1	4	15					1										1
RAMP							1											1	
RCDM		1				1			2	3									
READ							2					3			1				2
REAF							3					3							
RESL					6	4	6		1		1							3	1
RXB1															1				
RXB2				1											2				
RXCM				1	4							1							1
SCKN		1		4	4	7			2					1					2
SEC2															3				
SITL		6			2								2						1
SOF1					4				2									4	1
SOF2													3					17	4
SOFR											3	1			1				2
SPUL														1	2				1
STEN																			1
TFLD	1	5		4			1		4		1	2		1					7
THSP		2		1	1		1	1				5	1	1					1
TIME		2							1		1								
TNSP							5												
WHHR									1										1
WHLR									2										
TOTAL	11	52	19	62	33	30	176	6	76	13	18	71	14	14	66	0	156	93	

A total of 817 out-of-area overhead assignments, with 93 unable-to-fill requests, were processed. The above numbers reflect both qualified and trainees orders, as well as initial mobilizations and reassignments in ROSS.

AIRCRAFT

IDAHO DEPARTMENT OF LANDS

The Idaho Department of Lands again had helicopters and single-engine airtankers on exclusive use contracts. IDL also had “price agreements” with other vendors for additional aircraft, similar to the USFS CWN program, and the ability to bring in additional aircraft under the Northwest Compact.

IDL HELICOPTER OPERATIONS

2017 was the first year of a new five-year IDL exclusive-use contract with Kachina Aviation for two Bell 212HP helicopters, N212KA and N214KA. Both helicopters and the helitack crews were officially based in Coeur d’Alene; from July 4 until September 17, the helicopters and crews alternated with one being re-positioned to Grangeville/Craigmont most of the time. There were two out-of-area assignments for the helicopter based in Coeur d’Alene; the COE-based helicopter had 29 dispatches to 20 local incidents.

Table 44. IDL Type 2 Exclusive-Use Helicopter Out-of-Area Assignments

Aircraft	Date	Resource Order # & Name of Incident	Days Assigned	DMOB
4KA	07/08/17	MT-FNF-000206 MOOSE CREEK, A-4	2	07/09/17
2KA	08/16/17	ID-SWS-000713 2017 IDL SWS PREPOSITION, A-1	7	08/22/17

No additional helicopters were hired using price agreements or brought in on other compact or state agreements.

IDL CDC ZONE SINGLE ENGINE AIRTANKER OPERATIONS

2017 was the first year of new IDL exclusive-use contracts for a scooping SEAT (FireBoss) with AeroSpray, Inc. (FB-201) and for four SEATs; the SEAT with Coeur d’Alene as the designated base was from Aero Tech, Inc. (T-837). The Fire Boss was brought on in early July and re-positioned to McCall until July 20 when it returned to Coeur d’Alene for the remainder of the season. T-837 was brought on July 12; with the exception of a few days in early August when it was repositioned to Grangeville, it stayed for the duration of the season.

Table 45. IDL SEAT/FireBoss Dispatches

Aircraft	Local		Out of Area	
	# Dispatches	#Incidents	# Dispatches	#Incidents
FB-201	4	3	17	8
T-837	15	12	16	11

IDAHO PANHANDLE NFs/COEUR D'ALENE DISTRICT BLM

The local and area fire danger justified the repositioning of additional firefighting aircraft at Coeur d'Alene for much of the season by federal agencies at the geographic level. Aircraft assigned here included a FireBoss, SEATs, Large Airtankers, Air Attack platforms, and a Type 2 Helicopter. In addition, the IPNF brought on additional helicopters; a CWN Type 3 Helicopter was put on before and after the forest's Exclusive Use helicopter time period and another Type 3 was brought in under the R1/R3 Agreement.

IPNF HELICOPTER OPERATIONS

2017 was the last year of the IPNF exclusive-use helicopter partnership with R-3 Kaibab NF; in 2018 the partnership will change to the Apache-Sitgreaves NF. The A-S Exclusive Use helicopter (N181MA) was brought up under the R1/R3 Agreement from July 18 - September 17. Prior to the contract period for the IPNF EXU helicopter (N20HX), the IPNF brought on a CWN helicopter (N102RF) from local vendor Eagle Helicopters. These three helicopters were dispatched a total of 50 times to 31 local fires. In addition, another of Eagle's CWNs (N3598D) was brought on by the GACC and staffed by Panhandle Helitack on out-of-area assignments from July 4 – September 15; 2RF was also assigned out of the area much of the summer. Long-time local vendor Panhandle Helicopter chose not to participate in 2017.

Table 46. IPNF Type 3 Exclusive-Use Helicopter Out-of-Area Assignments

Date	Resource Order # & Name of Incident	Days Assigned	DMOB
	None in 2017		

Table 47. IPNF Type 3 CWN Helicopter Out-of-Area Assignments

Aircraft	Date	Resource Order # & Name of Incident	Days Assigned	DMOB
98D	07/04/17	MT-LED-000115 July, A-14	74	09/15/17
	07/15/17	Reassigned to MT-LNF-001239 Sliderock CPX, A-32		
	07/16/17	Reassigned to MT-NWS-006008 Rogers Mountain, A-44		
	07/19/17	Reassigned to MT-HLF-000146 Park Creek, A-13		
	07/27/17	Reassigned to MT-HLF-000166 Arrastra Creek, A-7		
2RF	08/01/17	MT-LNF-001464 Rice Ridge, A-10	50	09/19/17
	08/05/17	Reassigned to ID-NCF-000521 Hanover, A-52		
	08/09/17	Reassigned to MT-LNF-001336 Sunrise, A-91		
	09/14/17	Reassigned to ID-IPF-000439 Buck, A-109		

The GACC repositioned a Type 2 Limited helicopter (N96EC) on the IPNF from July 15-30 and another Type (N977CH) was brought in for a few days in September. 6EC was dispatched 10 times to 9 different local fires while based here; it later returned to the Buck fire and was then dispatched to two other fires. 7CH was not used on any fires while here

NON-FIRE PROJECT HELICOPTER SUPPORT

There were several non-fire projects completed in 2017, the largest of which involved a multi-day replacement of all the radio repeaters on the forest. Other projects included sling work for trail bridges at Bonners Ferry and a shelter construction project on the Colville NF.

IPNF AIRTANKER OPERATIONS

A FireBoss (FB-204) was based at Coeur d'Alene Tanker Base (COE) from July 9 to September 18 with the exception of a week in early August when it was reassigned to Montana. Two BLM SEATs (T-886 and T-897) were assigned to local incidents and then were prepositioned at COE from September 4-18. Other SEATs were hosted here on a short-term basis. At least 8 Large Airtankers were hosted by COE at one time or another, with several others reloading here during the season.

Table 48. Federal SEAT/FireBoss/Large Airtanker Dispatches

Aircraft	Local		Out of Area	
	# Dispatches	#Incidents	# Dispatches	#Incidents
FB-204	14	11	19	12
T-886/T-897	7	3	-	-
Misc SEATs	4	1	4	1
Misc LATs	9	3	25	15

AERIAL SUPERVISION

Four different Air Attack platforms were based at Coeur d'Alene during the periods from July 12-23 and August 8-September 17; as many as three were here some days, while only one on other days. Others (including ASM modules) were at times hosted on a transient basis.

Table 49. COE Air Attack Dispatches

Aircraft	Local		Out of Area	
	# Dispatches	#Fires	# Dispatches	#Fires
7GB	7	4	9	7
8WY	5	4	6	4
4CT	7	6	7	6
01Q	-	-	5	3

In addition, three CWN platforms from local vendor Interstate Aviation were dispatched out-of-area six times.

Table 50. IPNF CWN Air Attack Platform Out-of-Area Assignments

Aircraft	Date	Resource Order # & Name of Incident	Days Assigned	DMOB
362	07/05/17 07/15/17	MT-LED-000115 July, A-21 Reassigned to MT-BDF-002213 Whetstone Ridge, A-3	15	07/19/17
7LK	07/14/17 07/18/17	MT-KNF-000001 2017 KNF ABC Misc, A-2 Reassigned to MT-KNF-000070 2017 KNF Aircraft Preposition, A-1	8	07/21/17
03X	07/16/17	MT-KNF-000001 2017 KNF ABC Misc, A-3	2	07/17/17
7LK	08/11/17 08/12/17 08/12/17	OR-RSF-000371 Blanket Creek, A-86 Reassigned to WA-OWF-000267 DIAMOND CREEK, A-41 Reassigned to WA-OWF-000361 JOLLY MOUNTAIN, A-8	18	08/28/17
362	08/30/17	WA-OWF-000361 JOLLY MOUNTAIN, A-44	12	9/10/17
7LK	9/10/17 09/11/17	WA-OWF-000361 JOLLY MOUNTAIN, A-75 Reassigned to WA-OWF-000031 2017 OWF AVIATION PREPO, A-4	4	09/13/17

FLIGHT FOLLOWING

AERIAL DETECTION/ AIR PATROL

The aerial fire detection program was staffed primarily by AD employees with one militia aerial observer and one tanker base employee. Several combination patrols were attempted, primarily early in the season. 2-zone combos usually provided adequate coverage; 3-zone patrols were attempted twice, but did not provide the desired coverage due to the large area. Several patrols were aborted or cancelled due to visibility issues from smoky conditions.

Technological improvements continued to be a great addition. I-PADs with moving map apps made locating fires quicker, easier, and more accurate; the ability to send photos also proved very useful.

Table 51. Aerial Detection

Dispatch Zone	Number of Patrols	Initial Attack Fires Detected
North	9	2
Central	20	3
South	36	2

Does not include secondary assists or monitoring of ongoing fires.

NON-FIRE FLIGHT FOLLOWING

CDC provides flight following for a variety of agency non-fire missions, including fish and wildlife surveys, insect and disease surveys, telecommunication repairs/upgrades and training/proficiency.

Since 2010, flight following duties have been assigned to the CDC Aircraft Dispatcher and although frequently delegated to zone dispatchers, are not tracked by zone.

Table 52. Non-Fire Flight Following

Year	North Zone	Central Zone	South Zone	TOTAL Hours
2017	-	-	-	62
2016	-	-	-	148
2015	-	-	-	80
2014	-	-	-	138
2013	-	-	-	139
2012	-	-	-	115
2011	-	-	-	217
2010	-	-	-	255
2009	38	16	65	119
2008	51	4	96	151
2007	40	39	39	118
2006	7	4	19	30
2005	19	35	16	70
2004	56	42	40	138

ADJECTIVE FIRE DANGER RATINGS

The five levels of fire danger are expressed in adjective terms for use in public information releases and fire prevention signing.

Table 54. Adjective Rating Progression

FIRE DANGER RATING AREA	FIRE DANGER RATING				
	<i>Low</i>	<i>Moderate</i>	<i>High</i>	<i>Very High</i>	<i>Extreme</i>
North Mountains Priest Lake RD Bonners Ferry RD Sandpoint RD (North) Priest Lake FPD	<i>begin</i>	06/23/17			
			07/07/17		
				07/19/17	
					07/31/17
			09/18/17		
		09/21/17			
	10/13/17				
North Valleys Kootenai Valley FPD Pend Oreille FPD	<i>begin</i>	06/23/17			
			07/03/17		
				07/19/17	
					07/31/17
			09/18/17		
		09/21/17			
	10/13/17				
South Mountains Sandpoint RD (South) Coeur d'Alene River RD St. Joe RD Cataldo FPD (East)	<i>begin</i>	06/23/17			
			07/07/17		
				07/20/17	
					07/31/17
			09/18/17		
		09/21/17			
South Valleys Mica FPD Cataldo FPD (West) West St. Joe FPD Ponderosa FPD Coeur d'Alene Tribe	<i>begin</i>	06/28/17			
			07/07/17		
				07/21/17	
					07/31/17
			09/18/17		
		09/21/17			
	10/13/17				
CDC Upward Reporting for Situation Report	<i>begin</i>	06/23/17			
			07/07/17		
				07/20/17	
					07/31/17
			09/18/17		
		09/21/17			
	10/13/17				

PREPAREDNESS LEVELS

Preparedness levels are established by the coordinators at the appropriate level and are dictated by burning conditions, fire activity, and resource availability. Since 2013, CDC has only tracked the local (CDC Zone) Preparedness Level.

Table 55. CDC PL Progression

Date	CDC PL
<i>Begin</i>	1
07/07/17	2
07/11/17	3
09/03/17	4
09/18/17	2
10/02/17	1

RESPONSE LEVELS

2017 was the first year of Run Card Dispatching for Coeur d'Alene Dispatch. Daily Response Levels (Light, Medium, or Heavy) were based on the forecasted Burning Indices from the designated representative RAWS stations for each Fire Danger Rating Area.

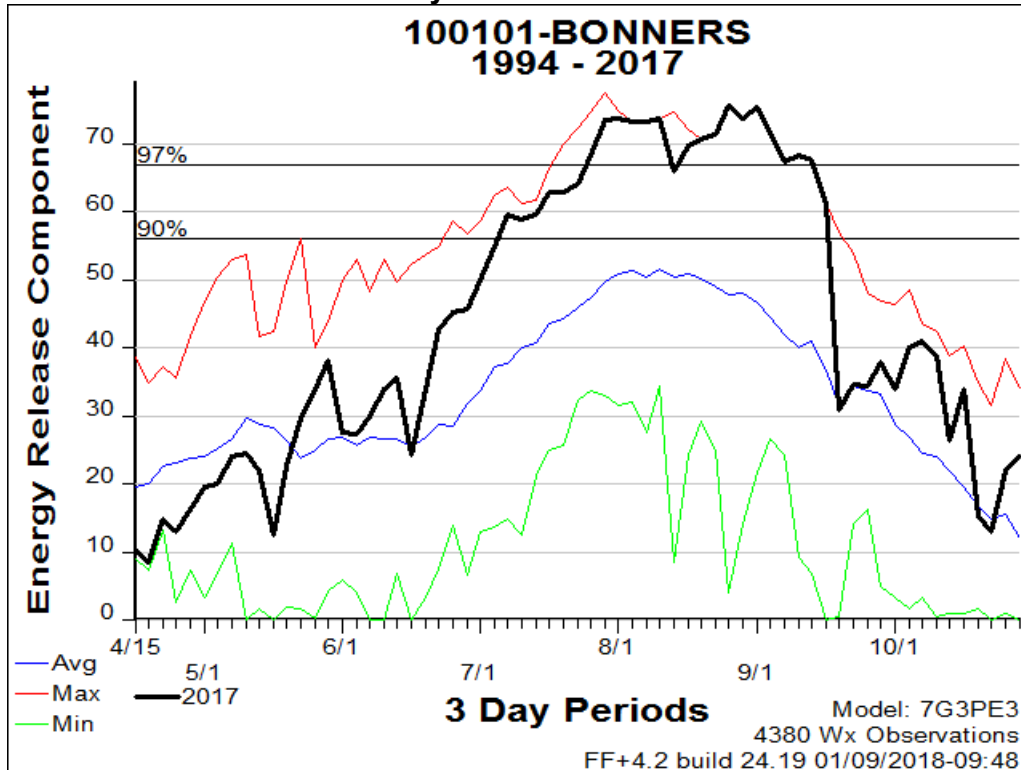
Table 56. CDC FDRA Response Levels (# of Days)

FDRA	Level	July	August	September	Total
North Mountains Priest Lake	Light	0	0	10	10
	Medium	24	20	15	59
	Heavy	7	11	5	23
North Valleys Bonners Ferry	Light	0	0	9	9
	Medium	7	4	9	20
	Heavy	24	27	12	63
South Mountains Nuckols	Light	0	0	11	11
	Medium	22	13	11	46
	Heavy	9	18	8	35
South Valleys Shock	Light	5	0	10	15
	Medium	19	18	12	49
	Heavy	7	13	8	28

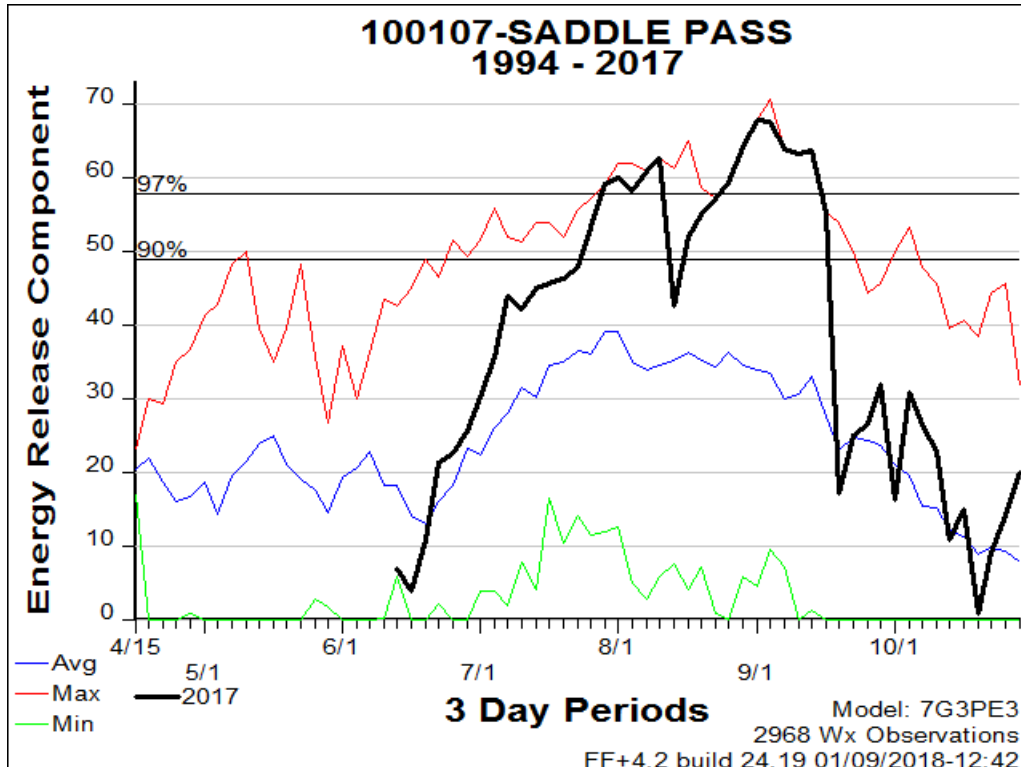
ENERGY RELEASE COMPONENT (ERC) GRAPHS

These ERC charts were generated utilizing FireFamily Plus. The Idaho Panhandle NFs manages eight active RAWs and utilizes two managed by the Nez Perce-Clearwater NF:

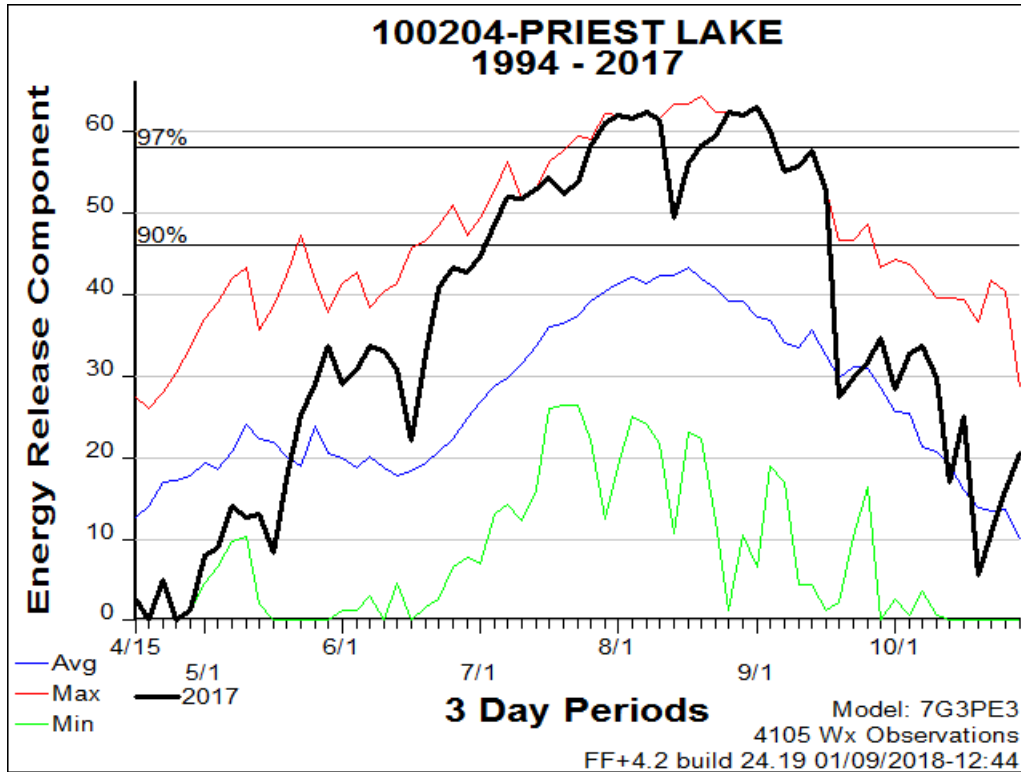
Station 100101 – Bonners Ferry



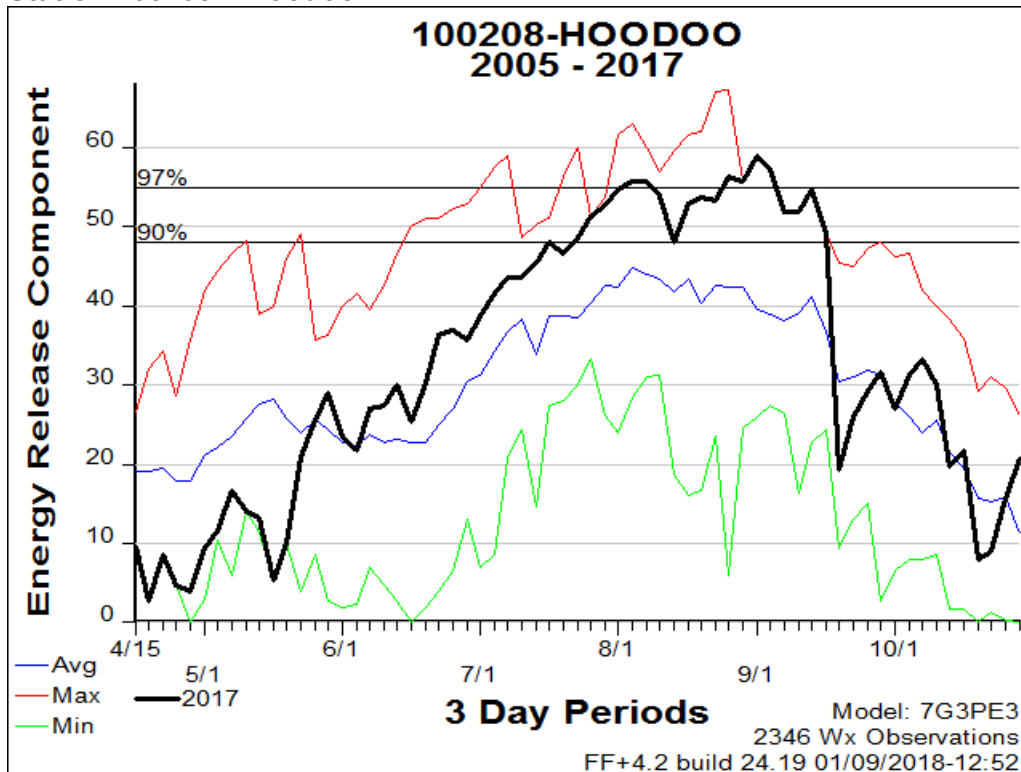
Station 100107 – Saddle Pass



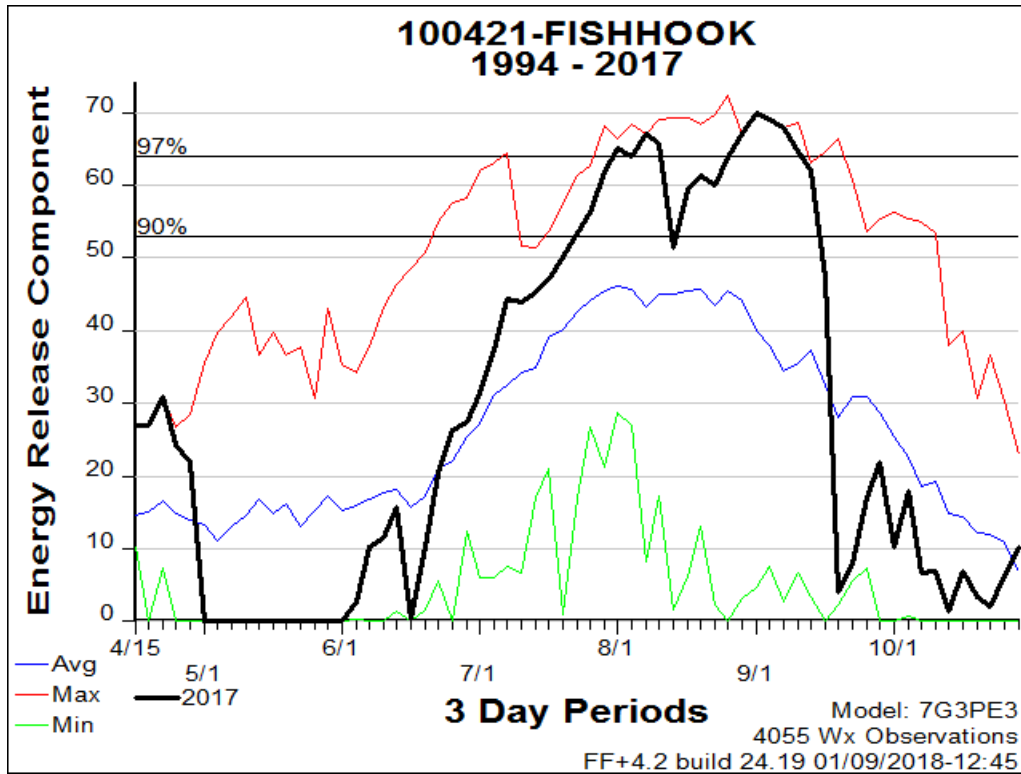
Station 100204 – Priest Lake



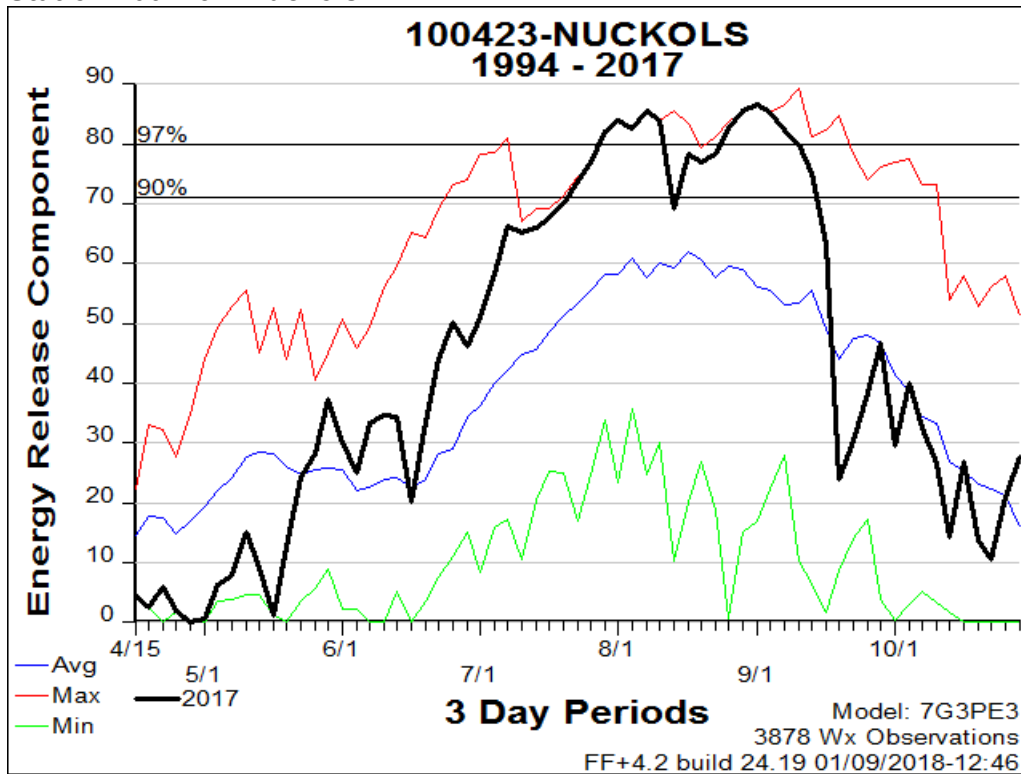
Station 100208 – Hoodoo



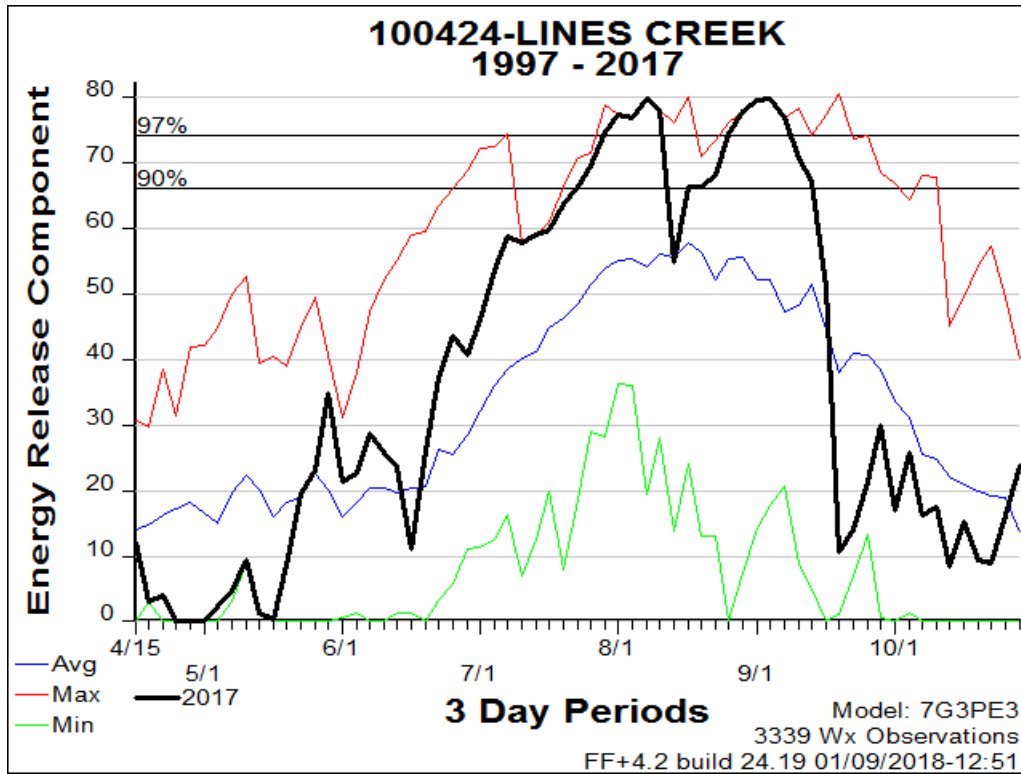
Station 100421 – Fishhook



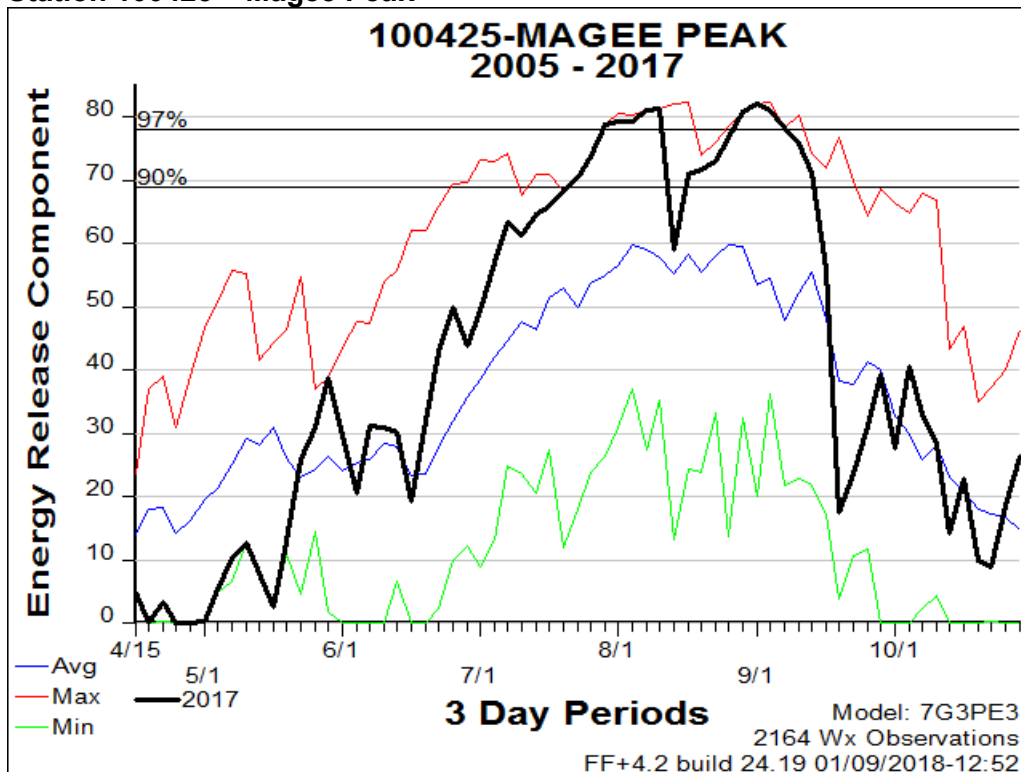
Station 100423 – Nuckols



Station 100424 – Lines Creek

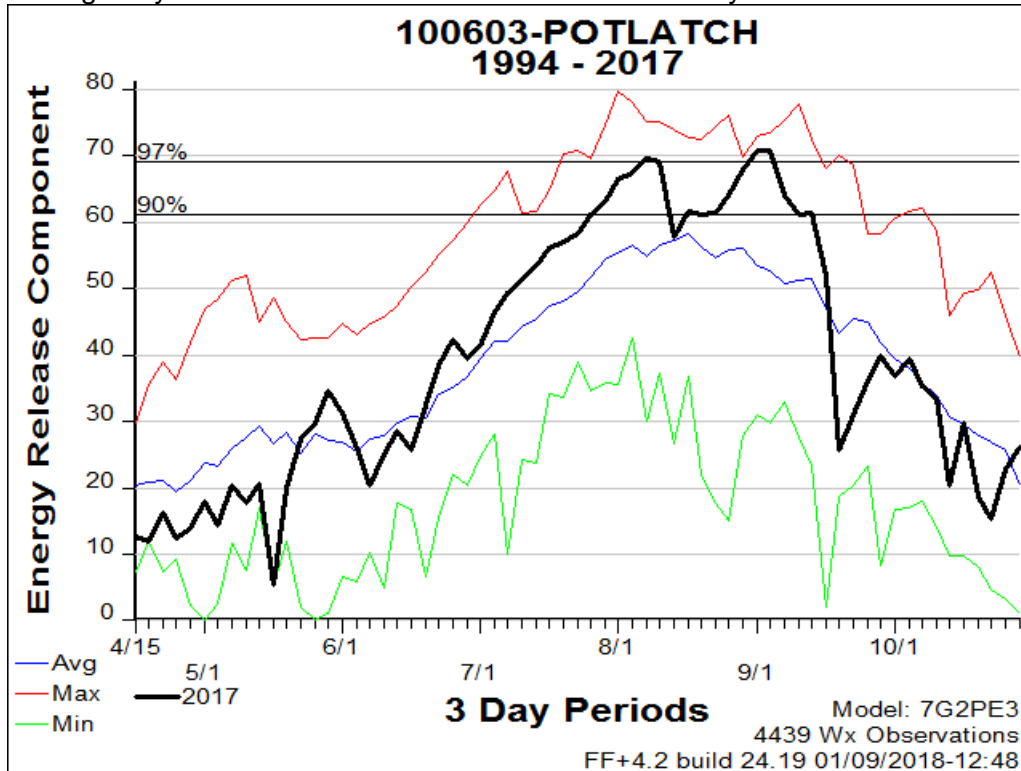


Station 100425 – Magee Peak



Station 100603 – Potlatch

Managed by the Clearwater NF but within and utilized by the CDC zone.



Station 100606 – Shock

Managed by the Clearwater NF but within and utilized by the CDC zone.

