

Great Basin Seasonal Outlook July – October 2025

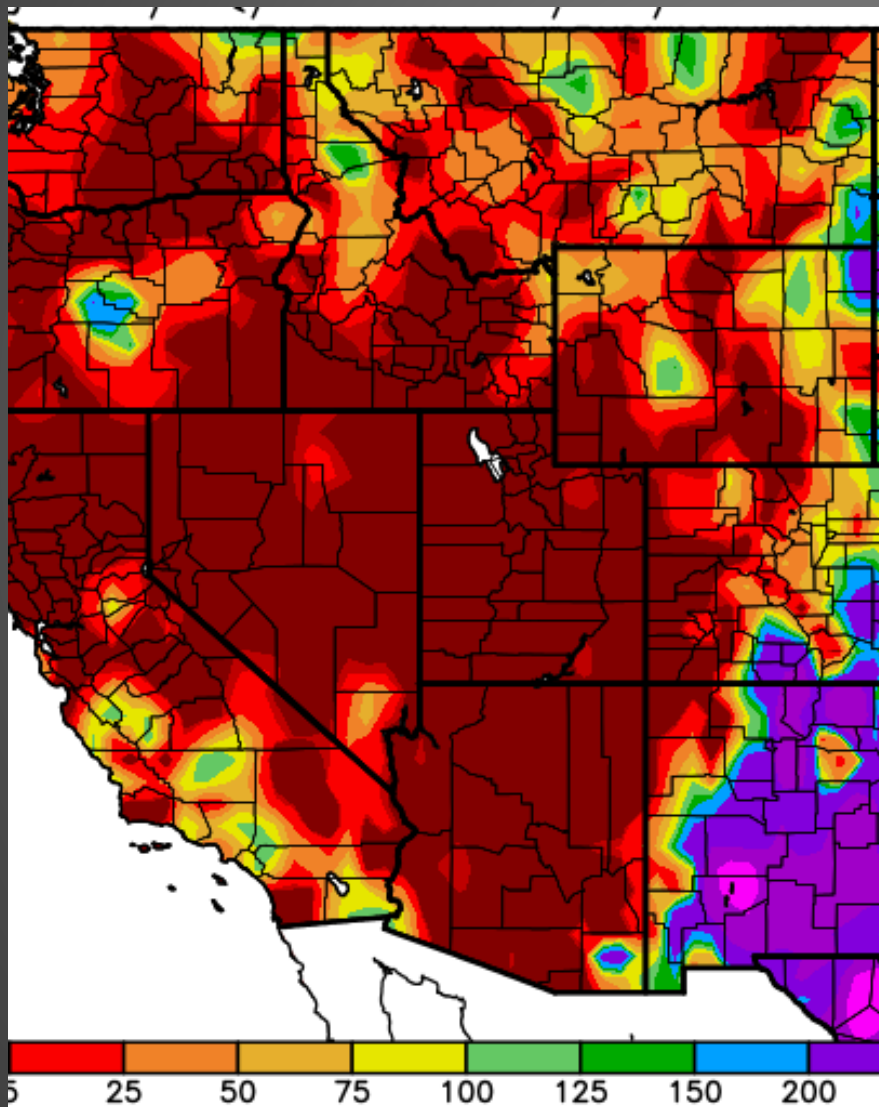


Basil Newmerzhycky Shelby Law
Gina Palma

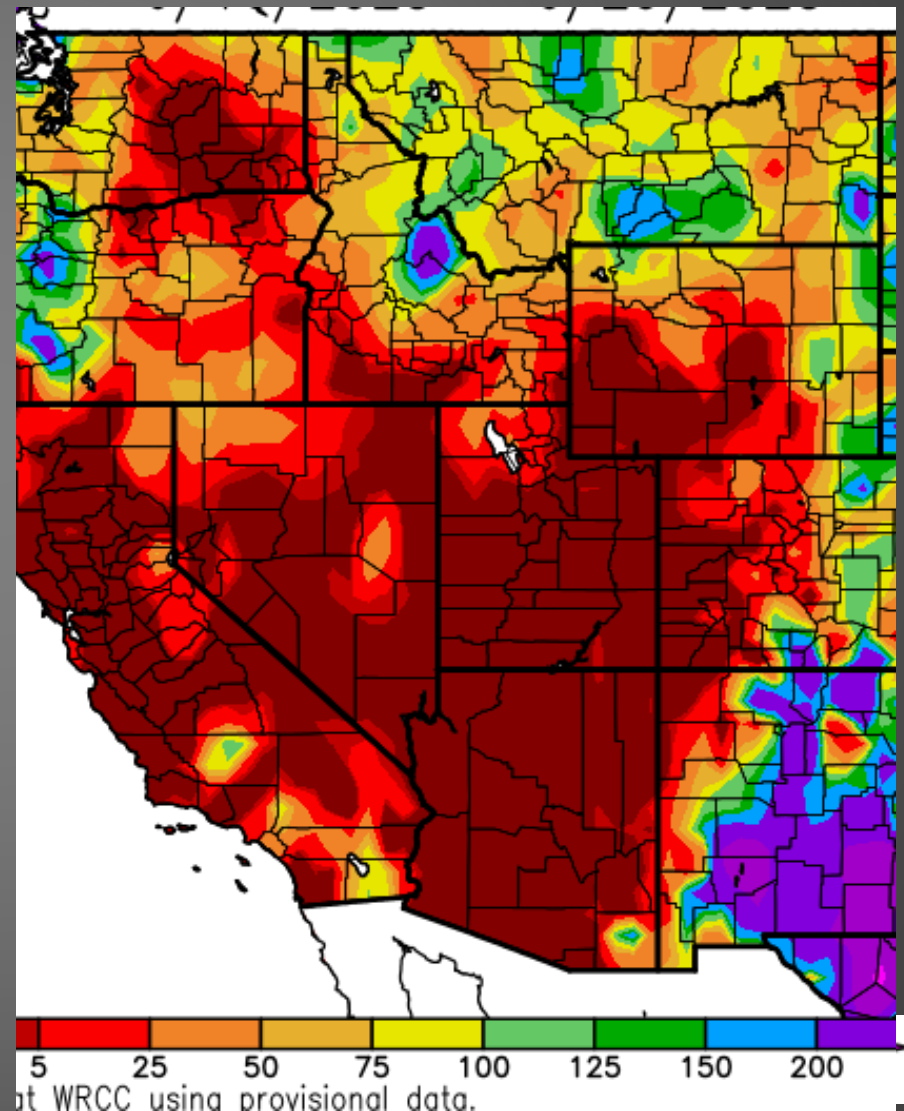


Precipitation Percent of Normal

Precipitation Amount - Last 7 Days

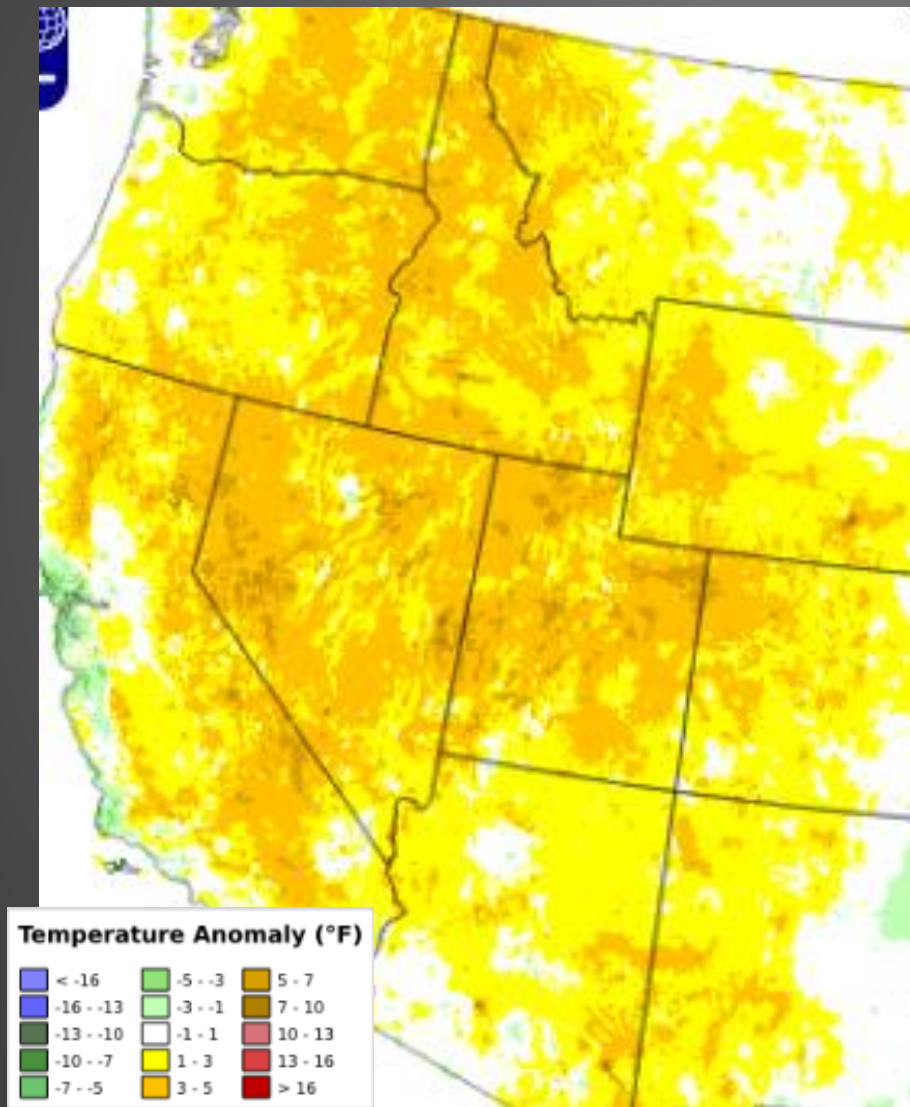


Percent of Normal – Last 14 Days

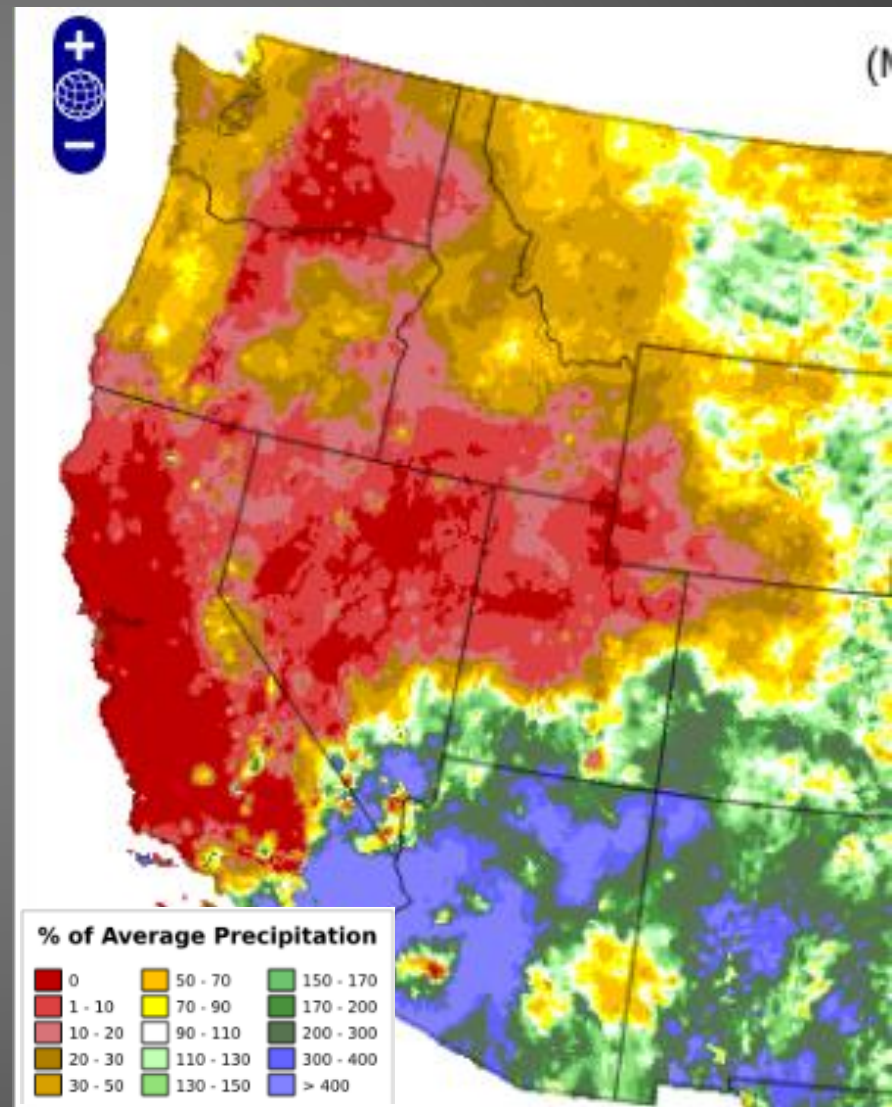


30-Day Temperature / Precipitation Anomaly

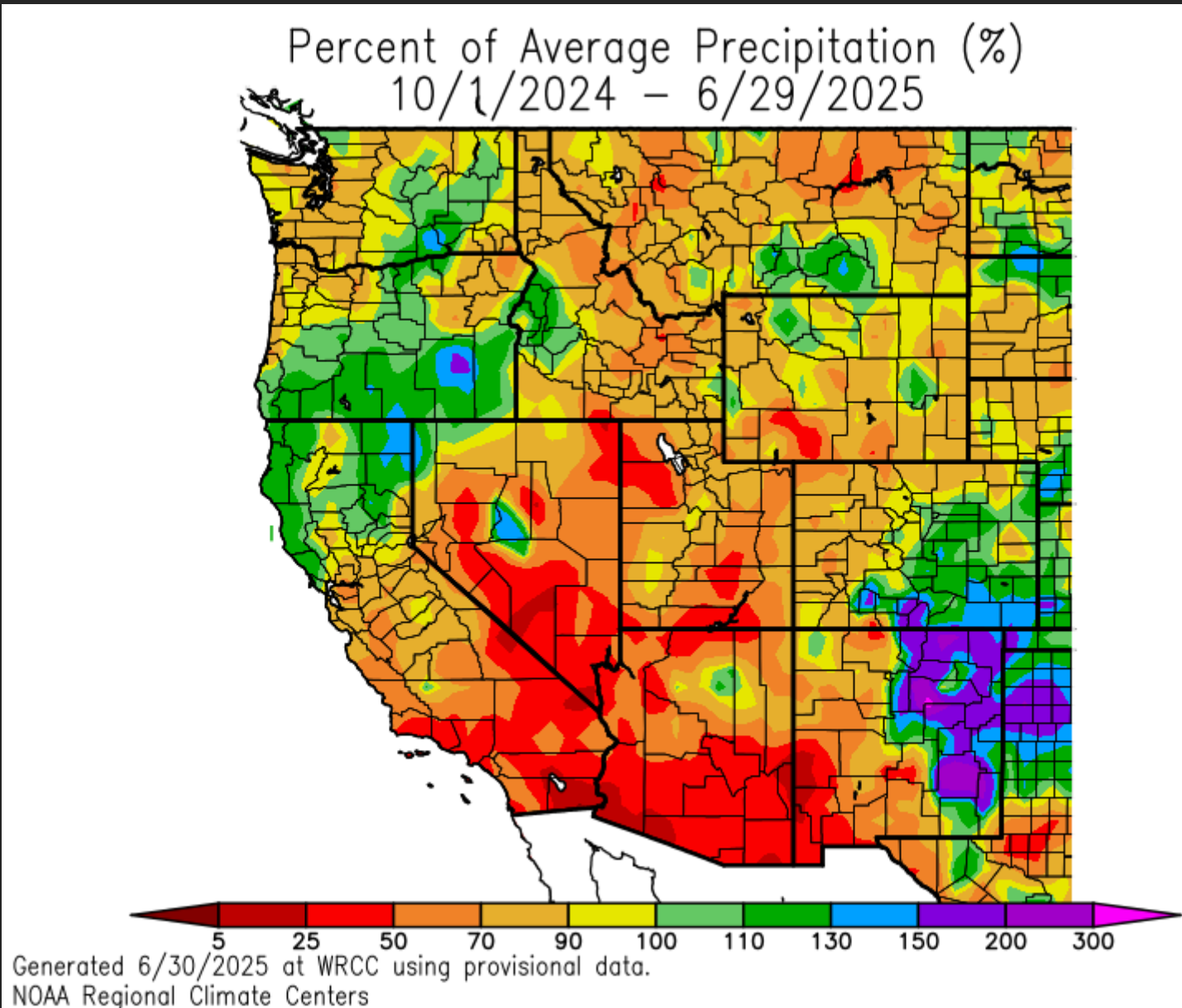
Mean Temperature Anomaly



Precipitation Percent of Average



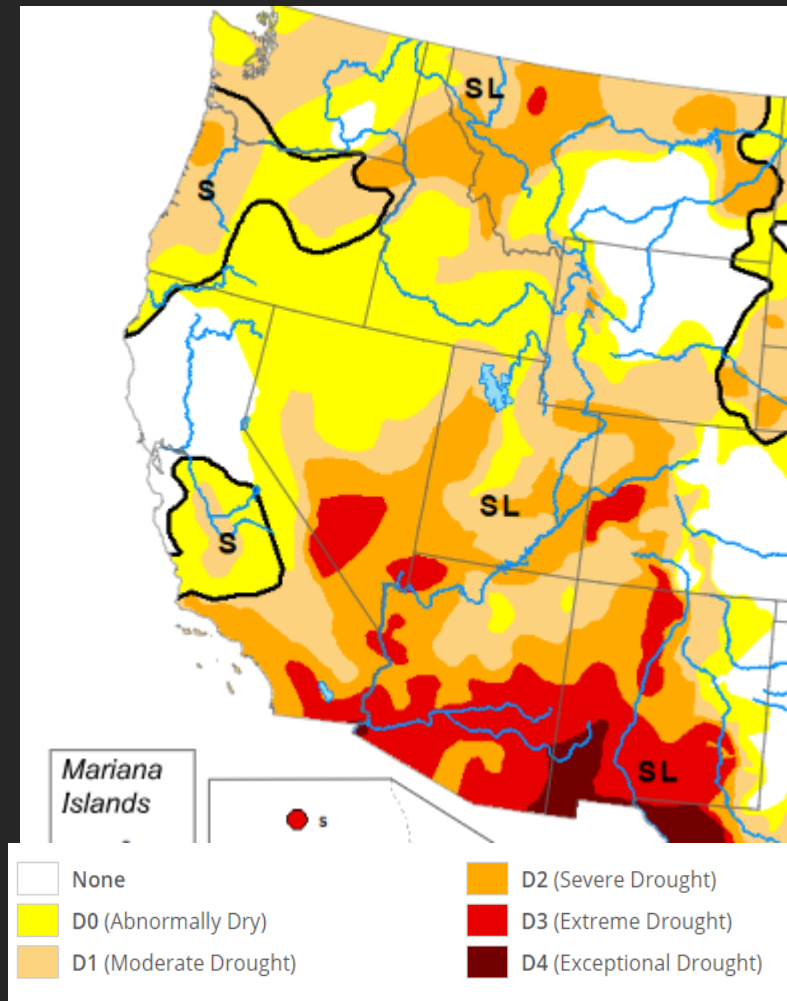
Precipitation: Since Oct 1, 2024



Drought Monitor and Outlook

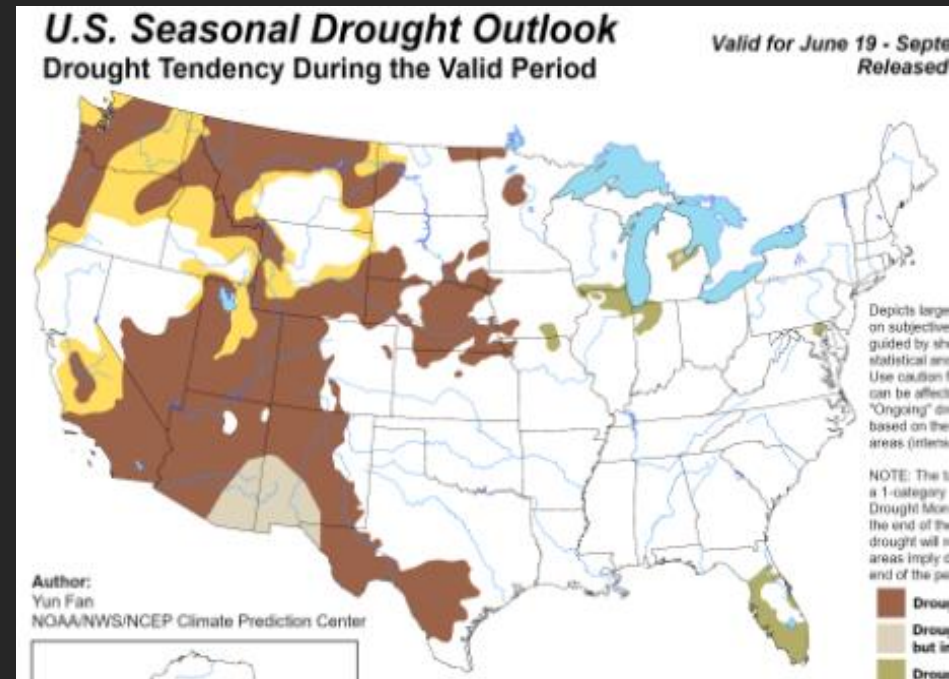
Drought Monitor

June 24th, 2025



Drought Outlook

June 19th – September 30th, 2025

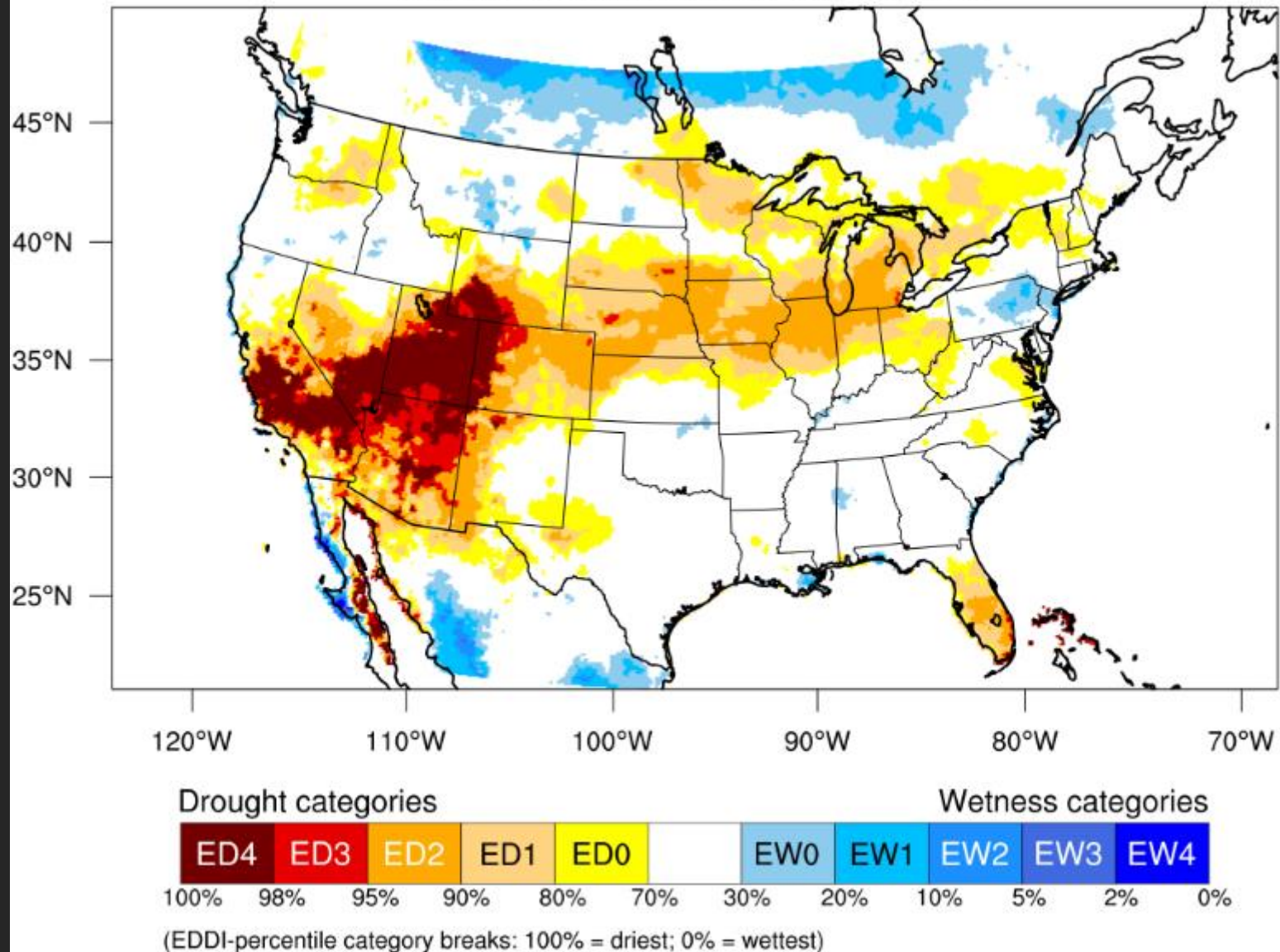


KEY:

- Drought persists or intensifies
- Drought remains but improves
- Drought removal likely
- Drought development likely

EDDI “Flash Drought”: Past 2 Weeks

2-week EDDI categories for June 24, 2025



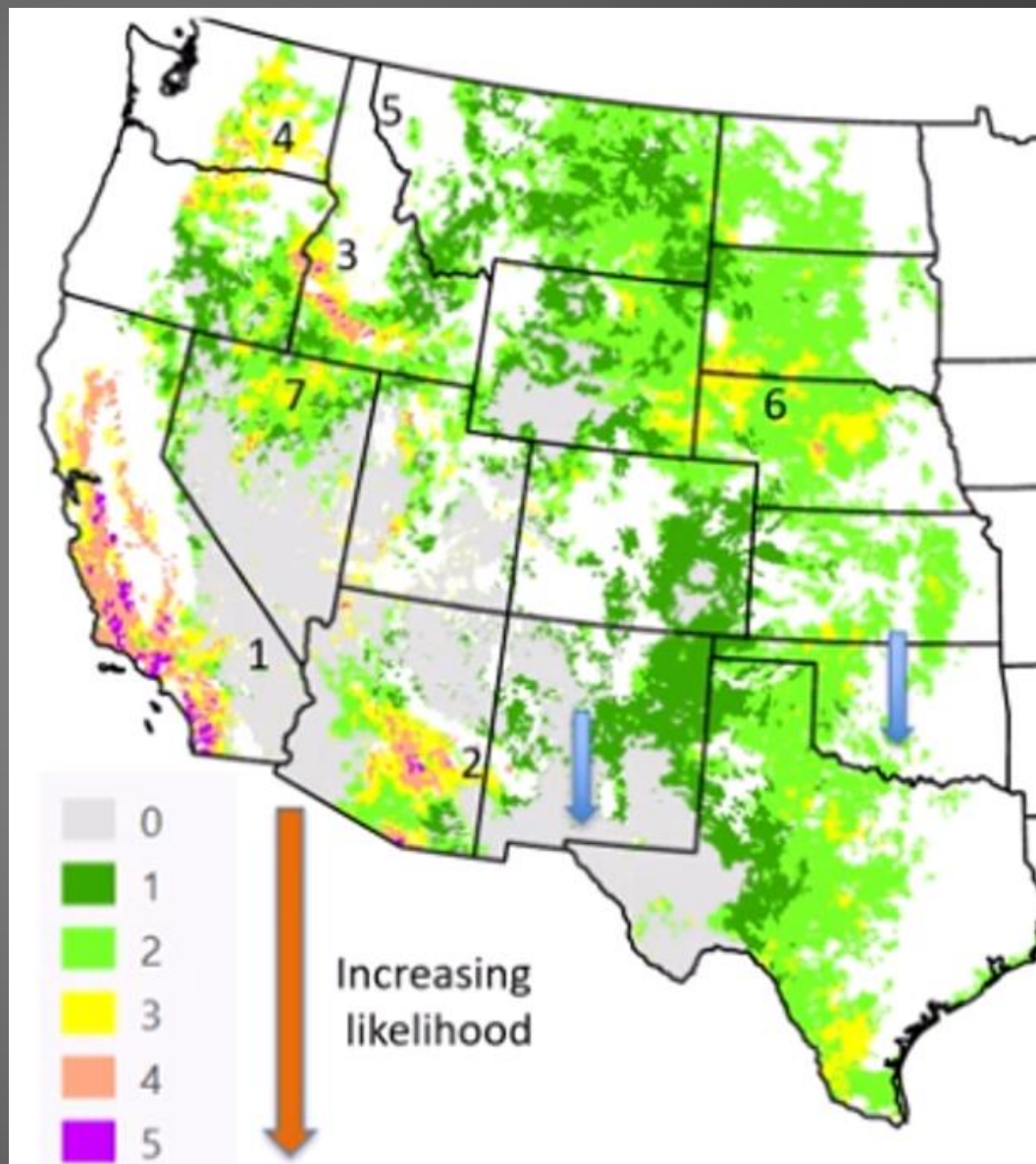
Fuels



Matt Reeves 7 Layer Cake

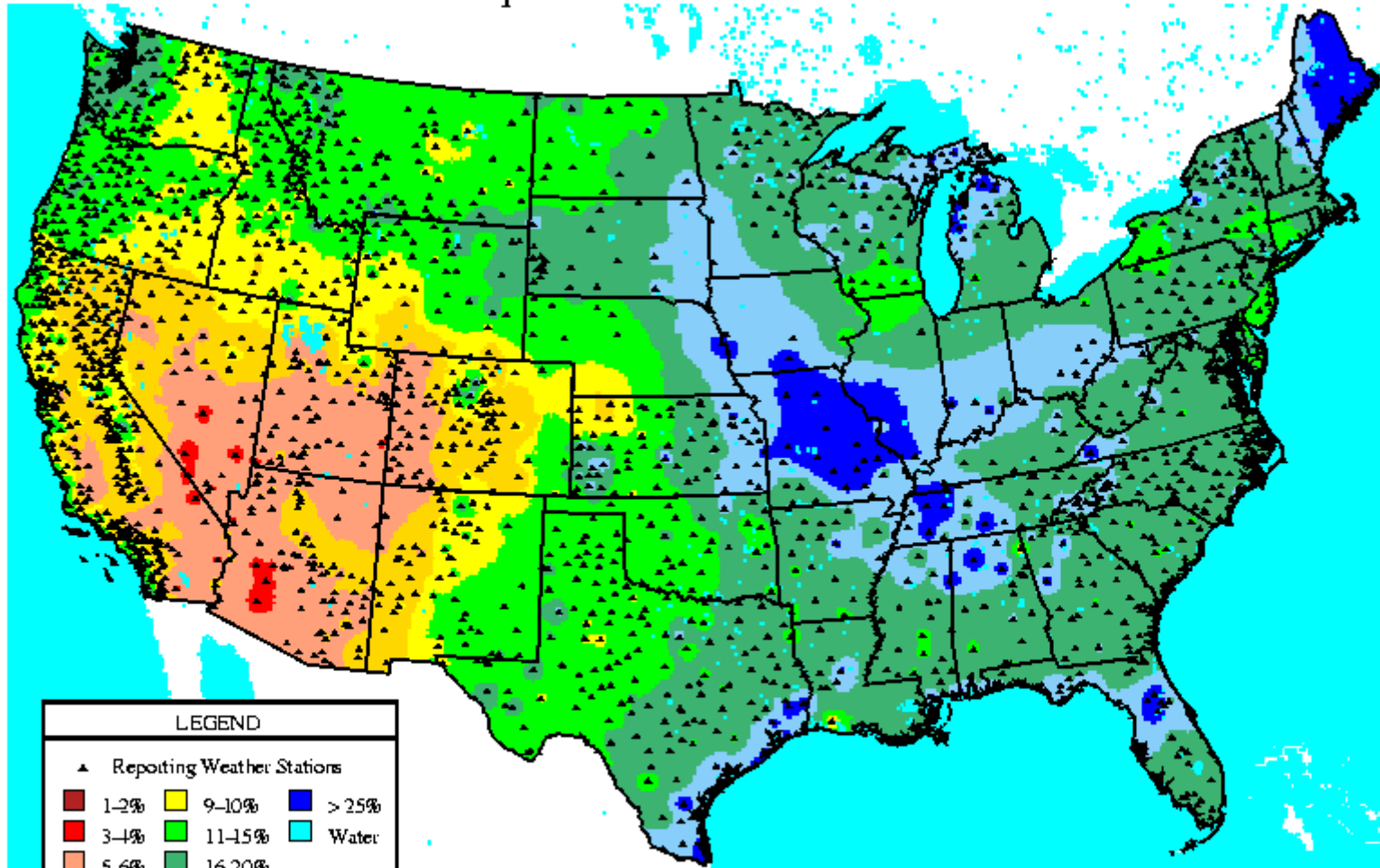
Filtered to Remove Low Fine Fuel Load Areas

- “7 Layer Cake”
- Filtered out areas of less than 600 lbs/acre of fine fuel loading (grey areas)
- Brighter yellow/orange/purple – increasing likelihood for larger wildfires in grasses
- White areas are mountain areas or larger fuel types



10 Hour Fuel Moisture

Obs. or Computed 10-Hour FM: 29-Jun-25



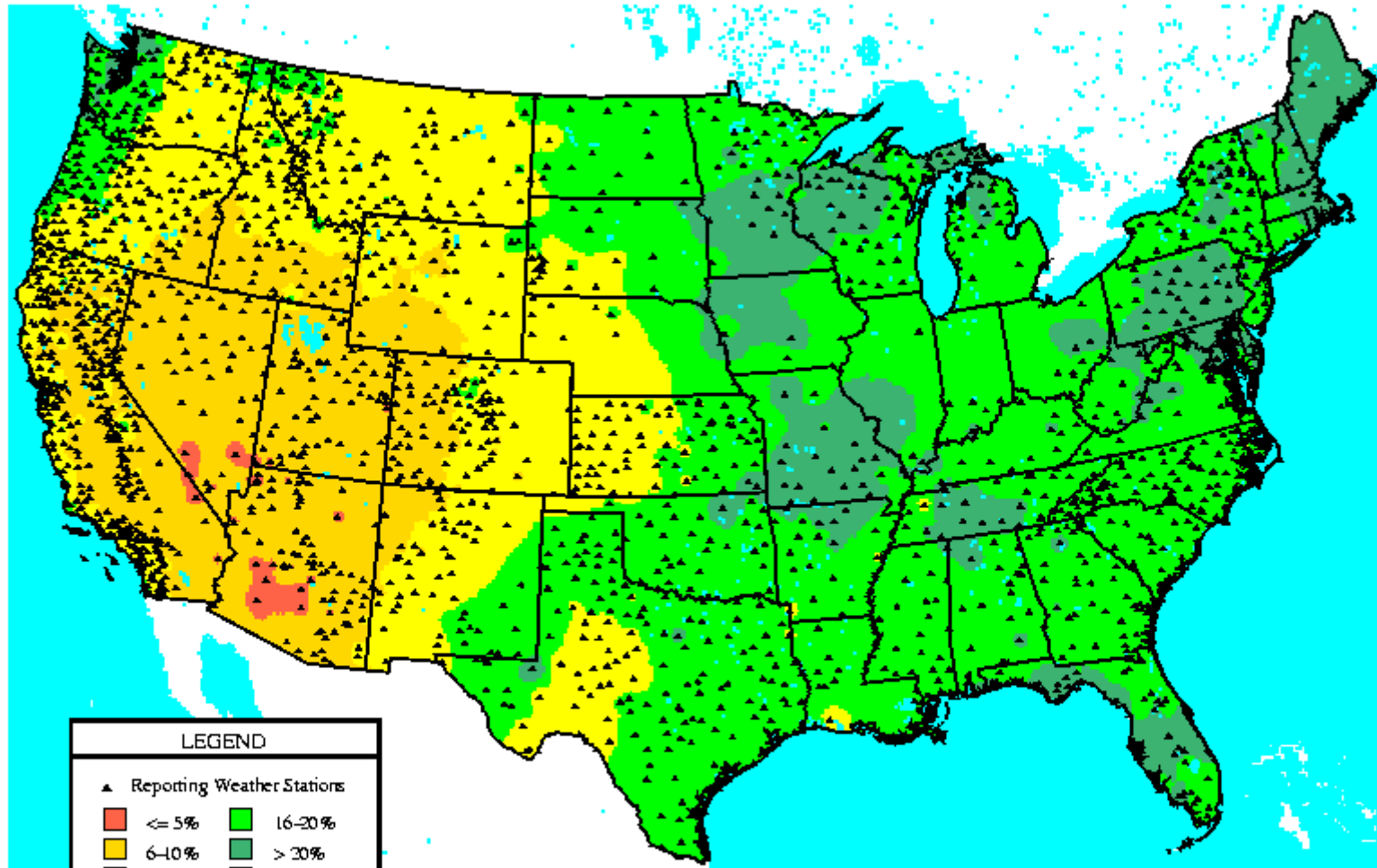
(Inv. Dist.² Interp.)

WFAS-MAPS Graphics FIRE BEHAVIOR RESEARCH MISSOULA, MT



100 Hour Fuel Moisture

Obs. 100-Hour FM: 29-Jun-25



LEGEND

▲ Reporting Weather Stations

- | | | | |
|--------|------------|------------|----------|
| Red | $\leq 5\%$ | Green | 16-20% |
| Yellow | 6-10% | Dark Green | $> 20\%$ |
| Orange | 11-15% | Blue | Water |

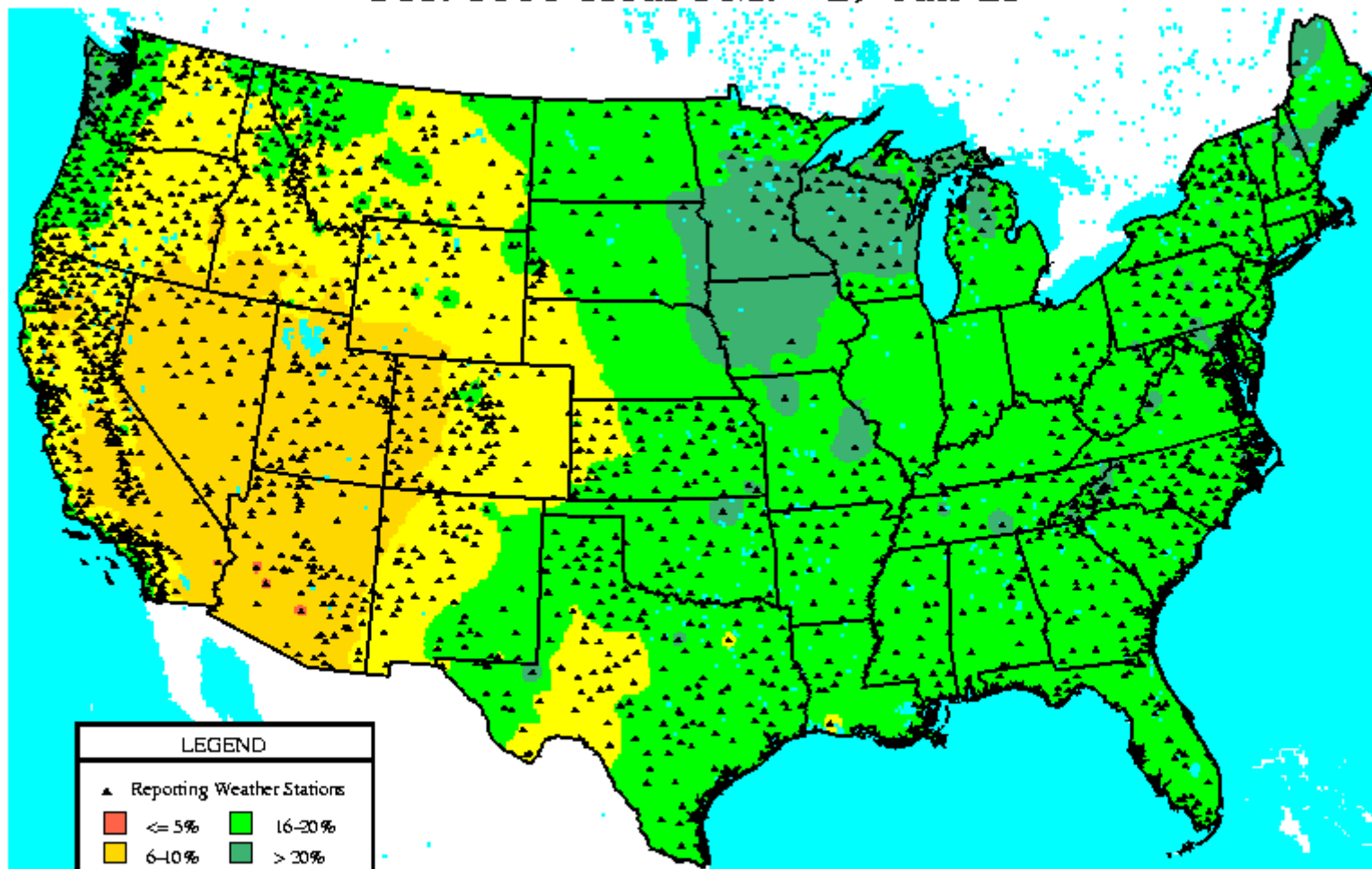
(Inv. Dist.² Interp.)

WFAS-MAPS Graphics FIRE BEHAVIOR RESEARCH MISSOULA, MT



1000 Hour Fuel Moisture

Obs. 1000-Hour FM: 29-Jun-25



LEGEND

▲ Reporting Weather Stations

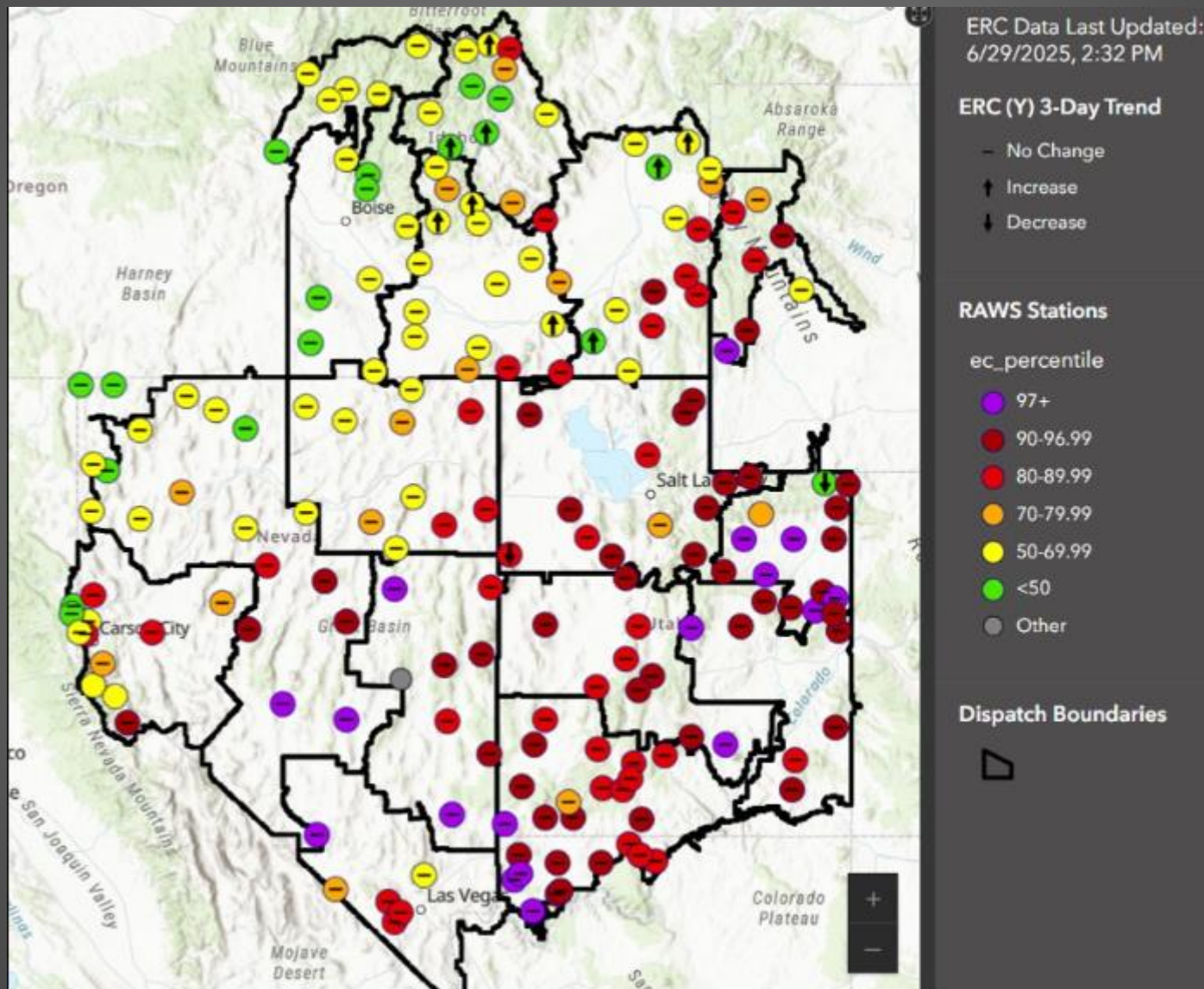
- | | |
|----------|----------|
| ■ ≤ 5% | ■ 16-20% |
| ■ 6-10% | ■ > 30% |
| ■ 11-15% | ■ Water |

(Inv. Dist.² Interp.)

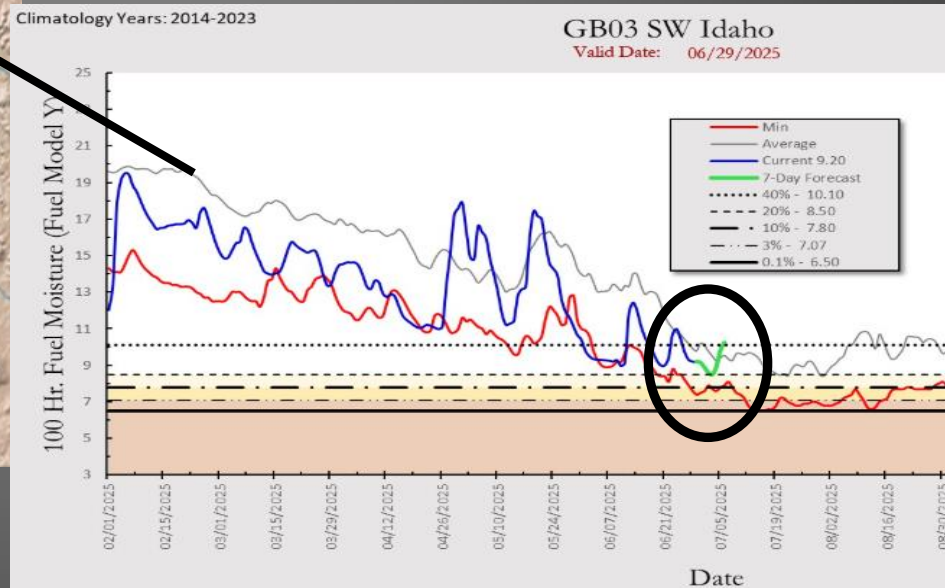
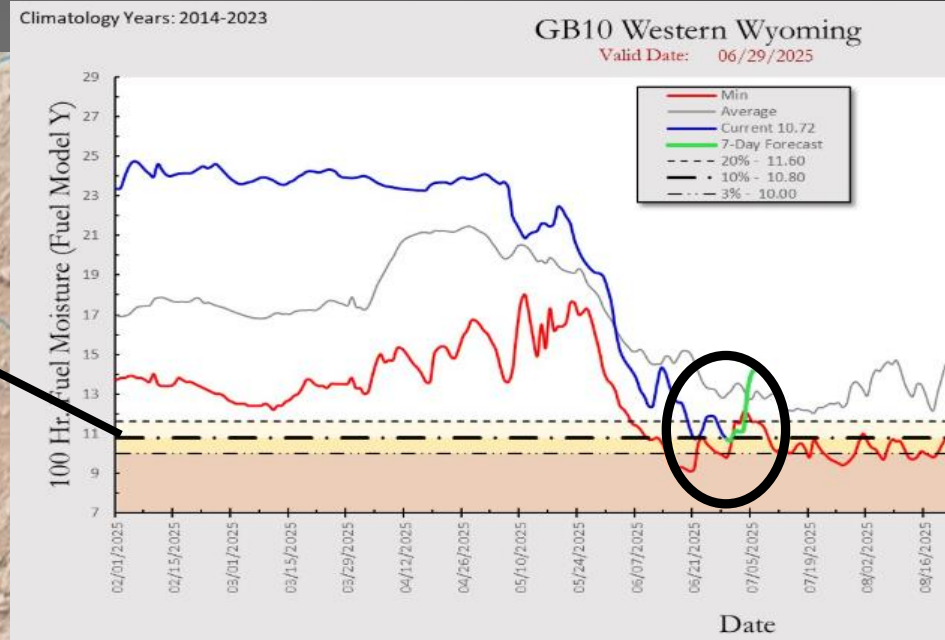
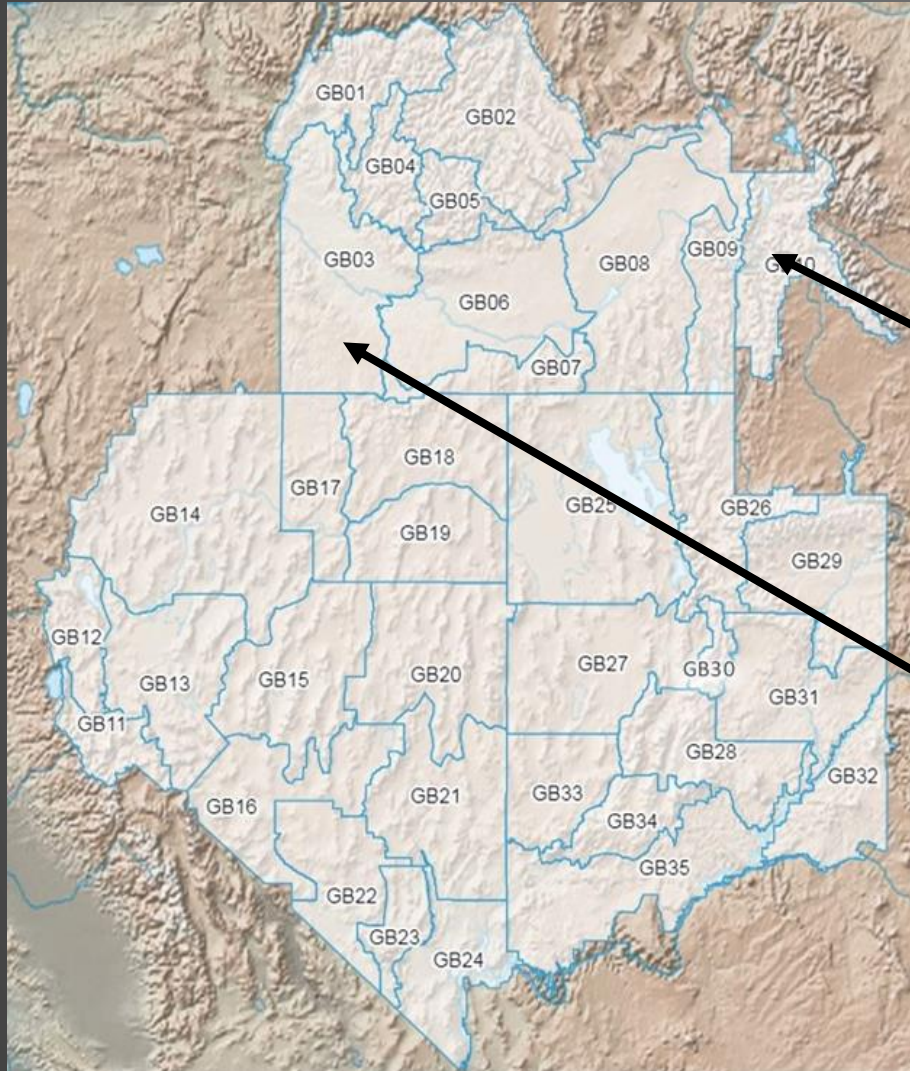
WFAS-MAPS Graphics FIRE BEHAVIOR RESEARCH MISSOULA, MT



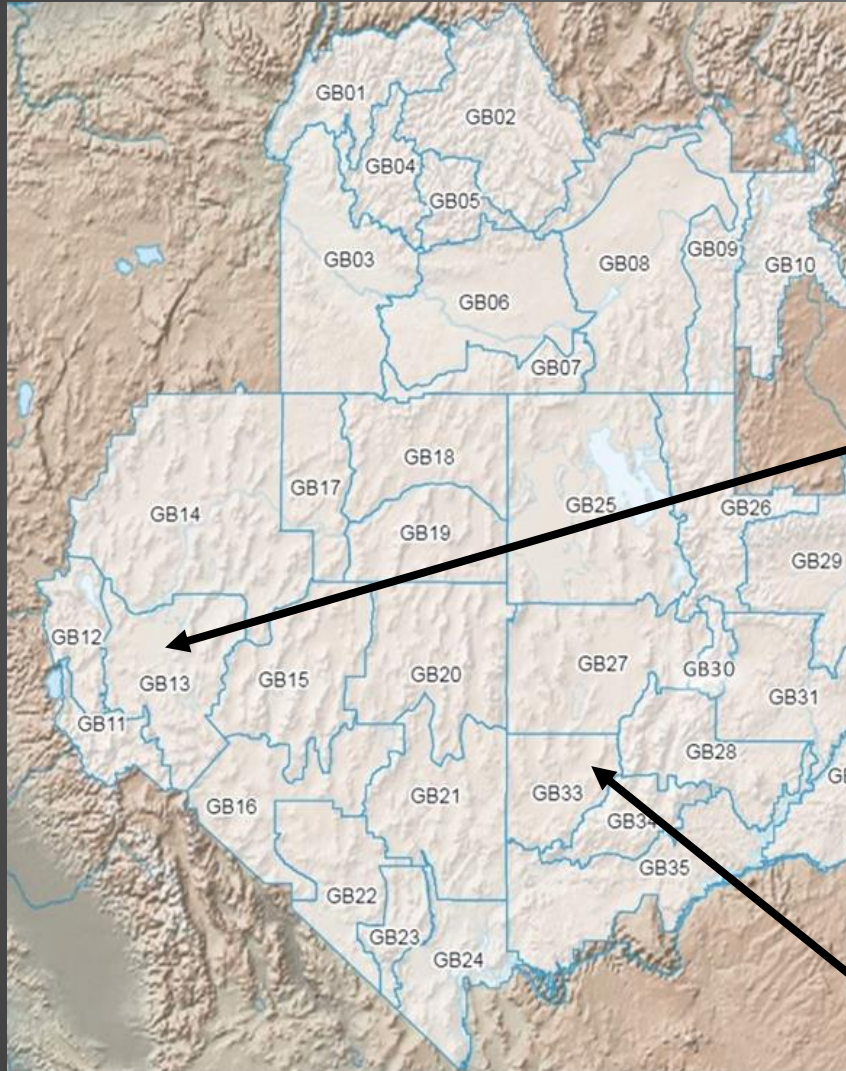
Great Basin ERC Percentile Point Map



Current Fuel Conditions: 100-Hr Fuel Moisture



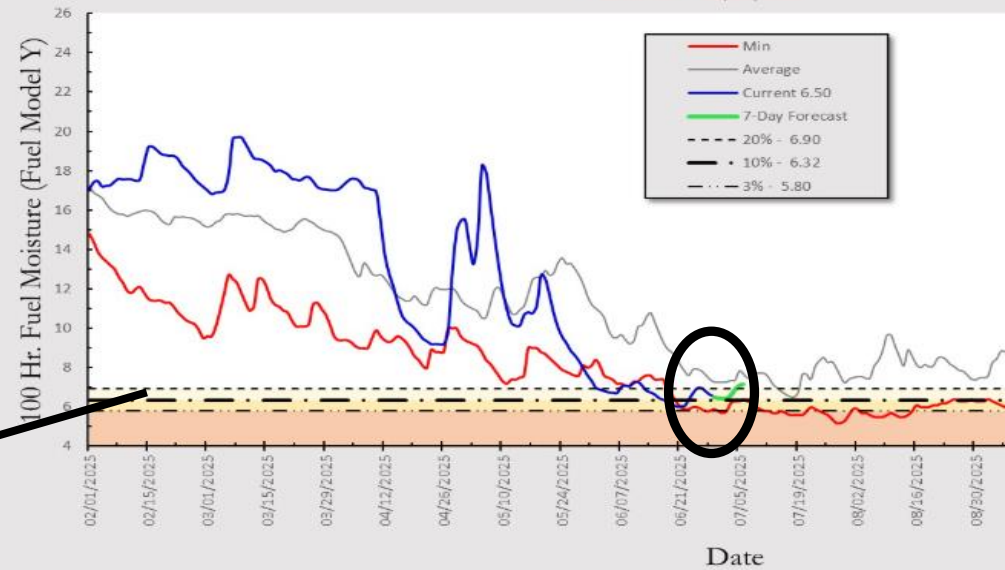
Current Fuel Conditions: 100-Hr Fuel Moisture



Climatology Years: 2014-2023

GB13 Lahontan Basin

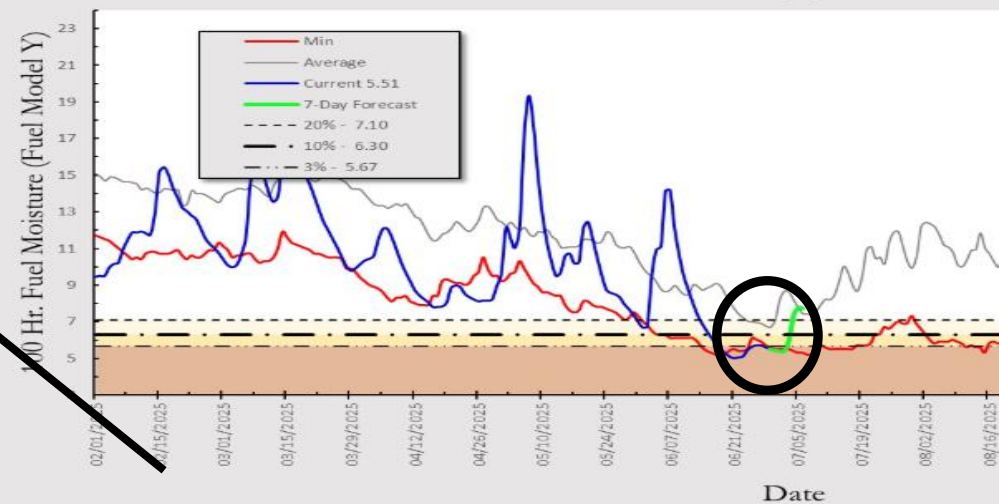
Valid Date: 06/29/2025



Climatology Years: 2014-2023

GB33 SW Utah Desert

Valid Date: 06/29/2025

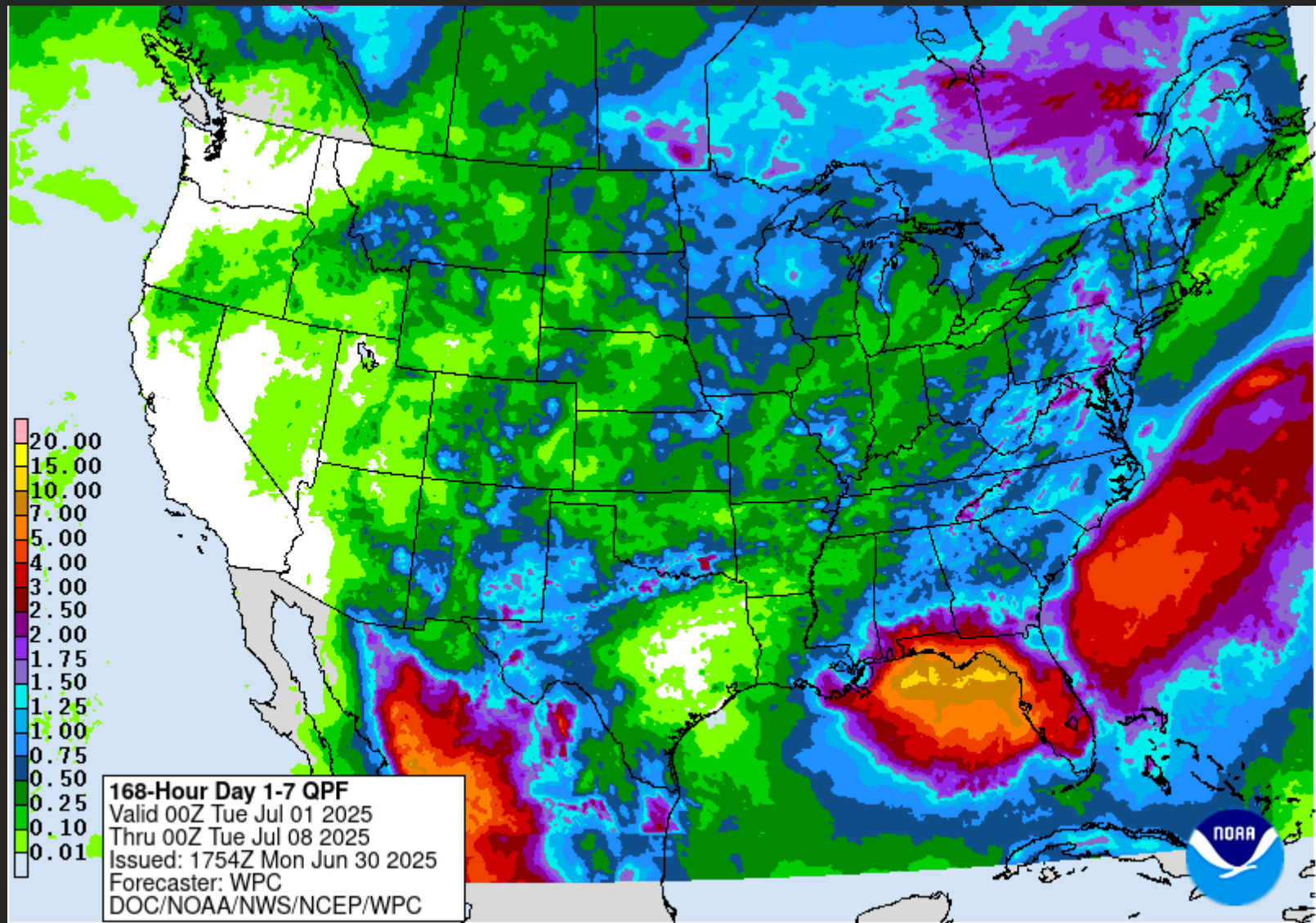


**Drought, Weather
Fuels, Snowpack:**

**What Happens
From Here?**



Precipitation Potential through First Week in July

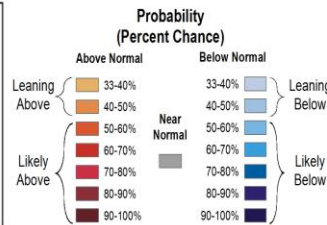
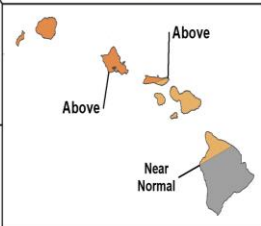
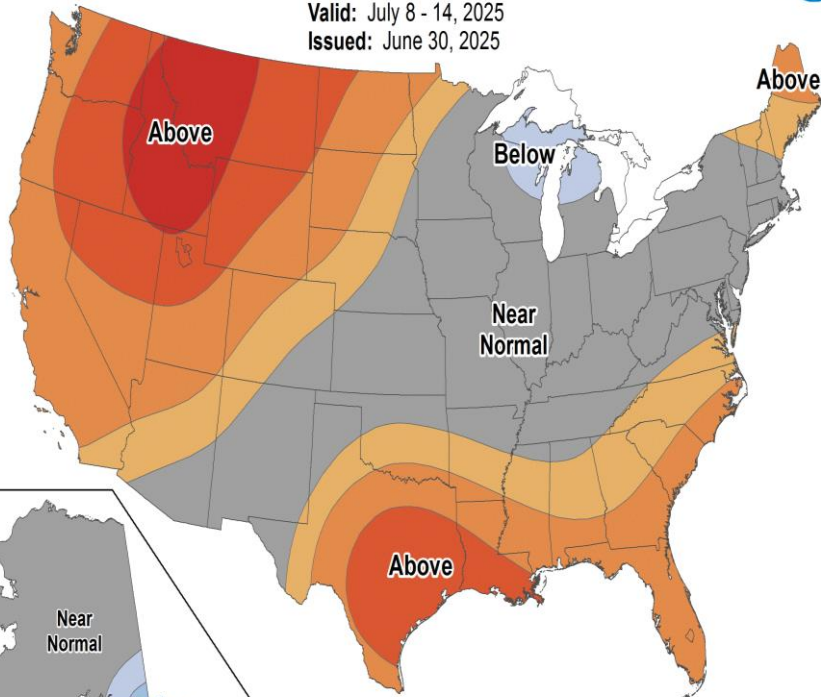


NOAA CPC 8-14 Day Outlook

Temperature

8-14 Day Temperature Outlook

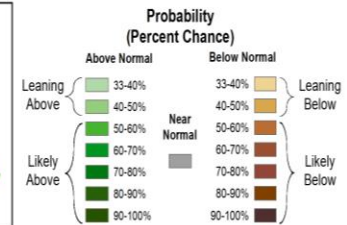
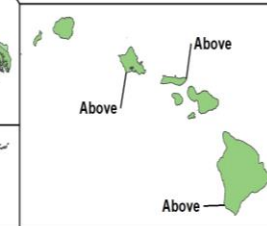
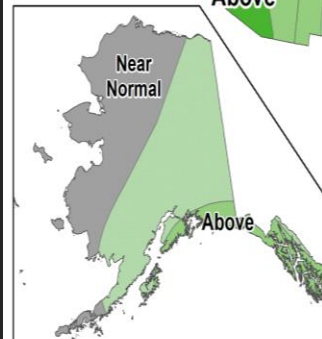
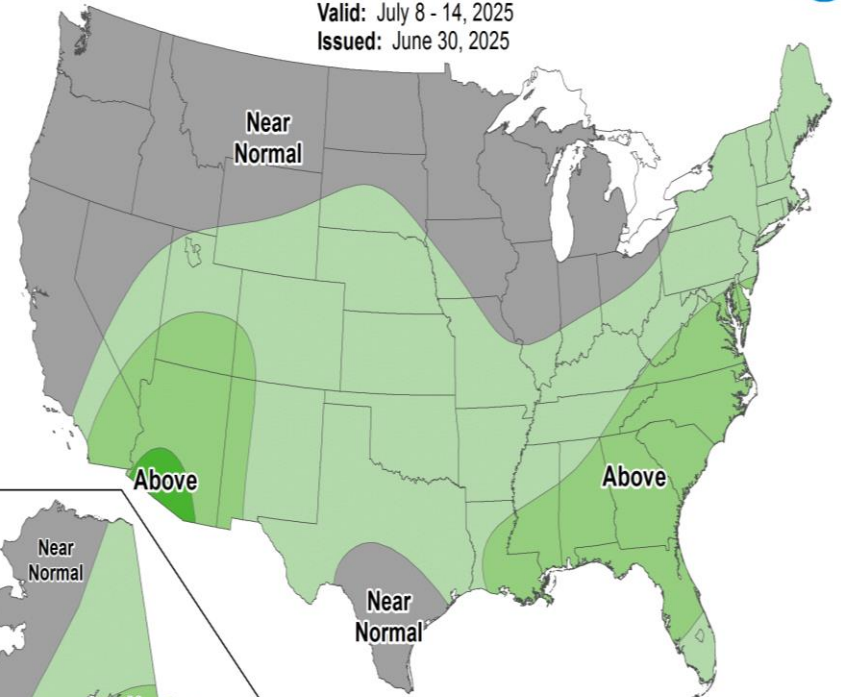
Valid: July 8 - 14, 2025
Issued: June 30, 2025



Precipitation

8-14 Day Precipitation Outlook

Valid: July 8 - 14, 2025
Issued: June 30, 2025



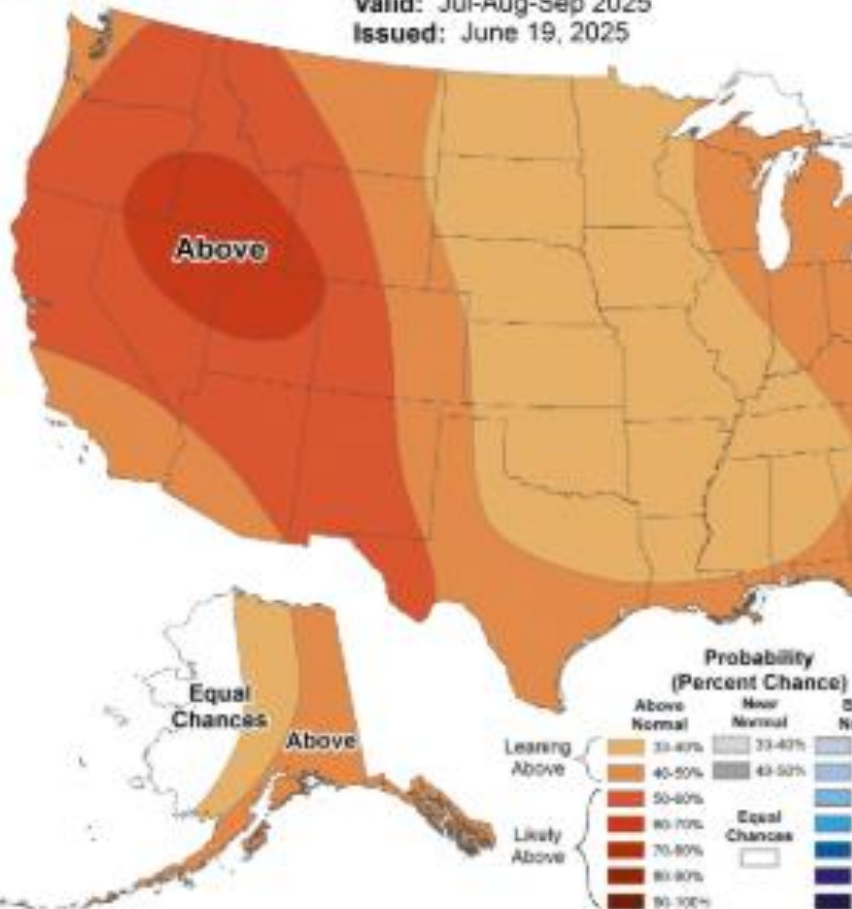
NOAA CPC July-September 3 Month Outlook

Temperature



Seasonal Temperature Outlook

Valid: Jul-Aug-Sep 2025
Issued: June 19, 2025

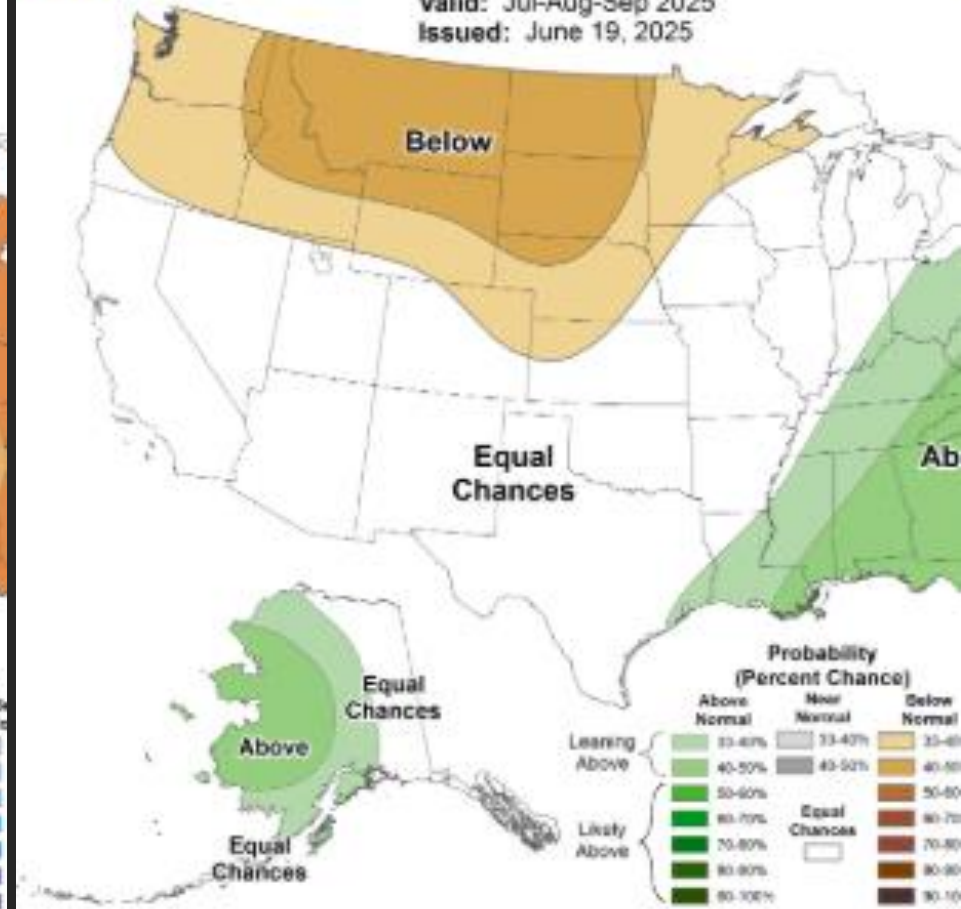


Precipitation



Seasonal Precipitation Outlook

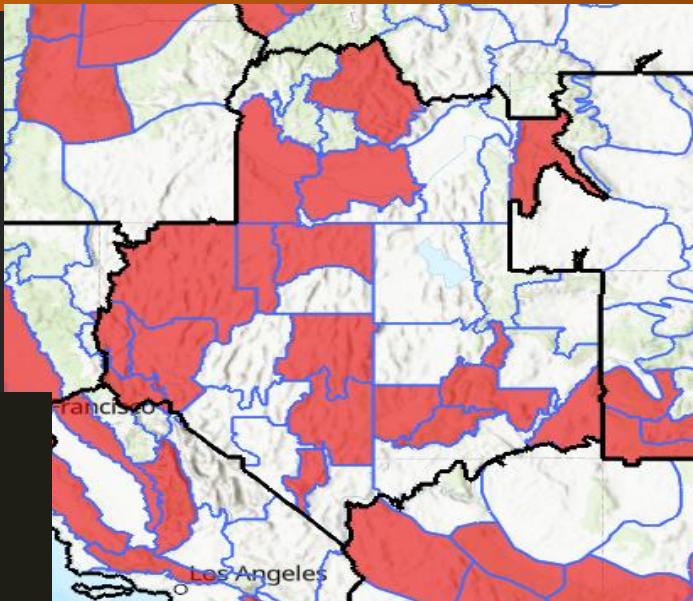
Valid: Jul-Aug-Sep 2025
Issued: June 19, 2025



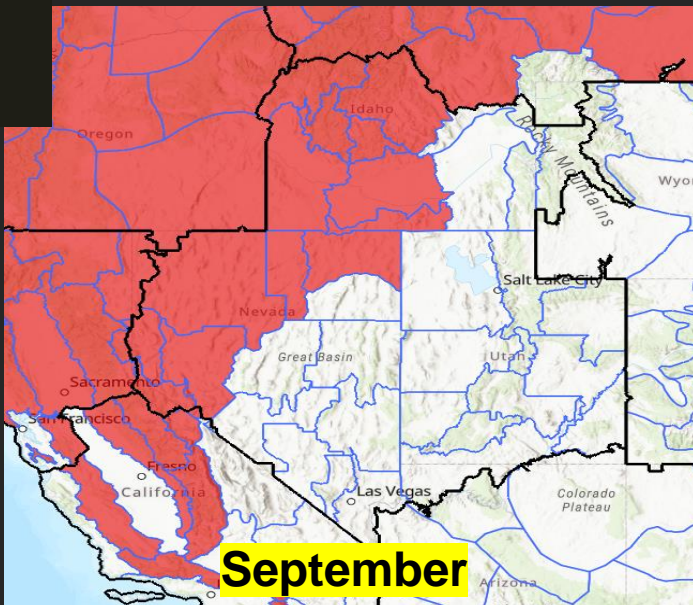
**Putting the
Pieces Together**



July

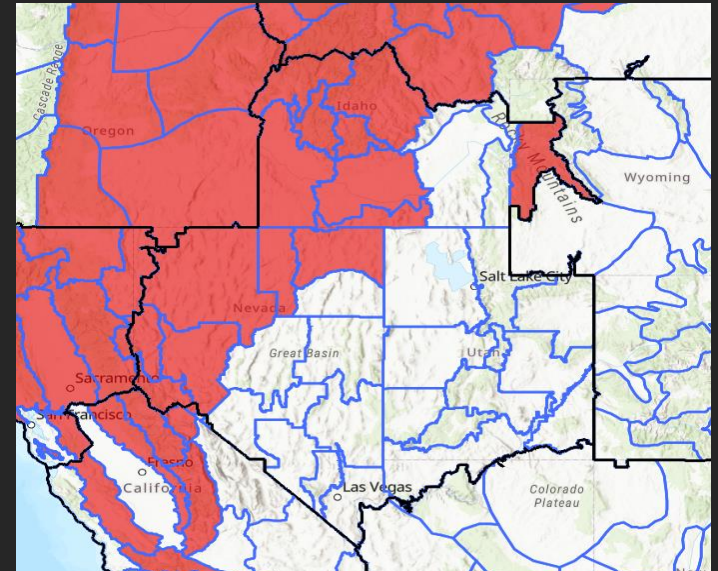


Normal
Below Normal
Above Normal



September

August



October



Questions?

Basil: bnewmerzhycky@blm.gov **Shelby:** slaw@blm.gov

Gina: gmcguire@blm.gov

X [@GreatBasinCC](#)