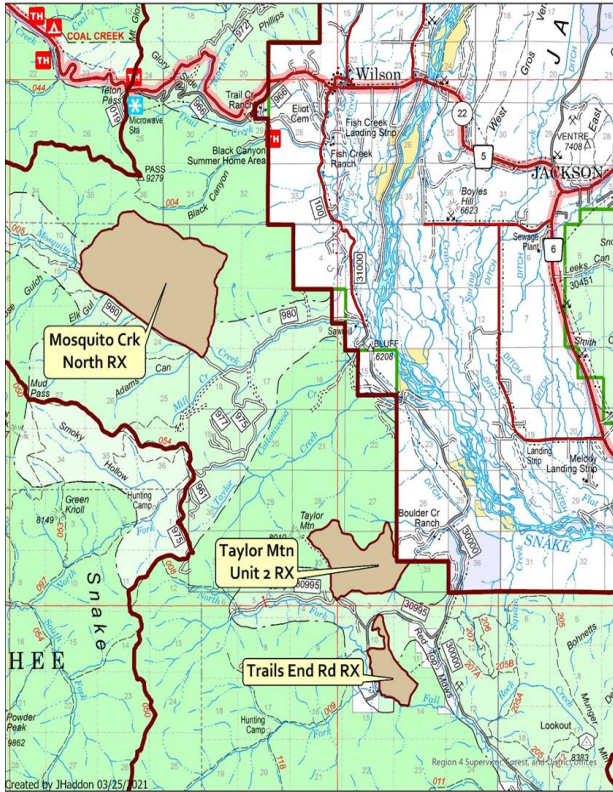


Teton Interagency Fire – Jackson Ranger District Teton To Snake Fuels Reduction Project



Jackson Ranger District Prescribed Fire Units



0 1 2 4 Miles

Prescribed Fire Unit Boundary
Teton to Snake Project Boundary



To learn more about individual Teton to Snake projects Scan the QR code

The Teton To Snake fuels reduction project is a landscape scale fuels mitigation project stretching from Teton Village, southward to the Snake River corridor. The project is designed to protect the communities surrounding Wilson, Teton Pass and Fish Creek and Fall Creek corridors in the event of a wildland fire.

Wildfires are inevitable, but the destruction of homes, ecosystems, and lives is not. These large investments in wildland fuel reduction projects help to reduce human and ecological losses from catastrophic wildfires, protecting communities and increase the probability that managers can respond to natural fire starts using tactics that are lighter on the land and allow fire to operate more freely in contributing to natural ecosystem processes.

Every fuels mitigation project requires objectives to support the purpose and need for the design of the project. Teton to Snake objectives include improving firefighter and public safety within the project area; by reducing expected fire flame lengths to less than 4 feet and reducing the potential for crown fires within the wildland urban interface (1/4 mile of private property.) During a wildfire event crown fires and torching trees produce embers, embers travel aloft and ignite spot fires ahead of a wildfire. Pretreating and removing vegetation to protect communities before the wildfire season will help to mitigate potential embers from negatively starting fires within the adjacent neighborhoods next to federal lands and within the Wildland Urban Interface.

As fire managers address the wildfire risk on public lands through fuel mitigation and prescribed fire, it's important and imperative our community and neighborhoods, focus on the susceptibility of homes to the inevitability of wildfire exposure on private lands. Do you know the risks from wildfire within your neighborhood? What does defensible space look like around your property? Is your neighborhood a safe area for firefighters to enter if there were a wildfire fast approaching? Together, we can and will build a stronger fire safe community. To learn more about these and other fuels mitigation strategies or learn more about your role as a community member and how you can support Fire Adapted Communities, please visit www.tetonfires.com or call 307-739-5424