

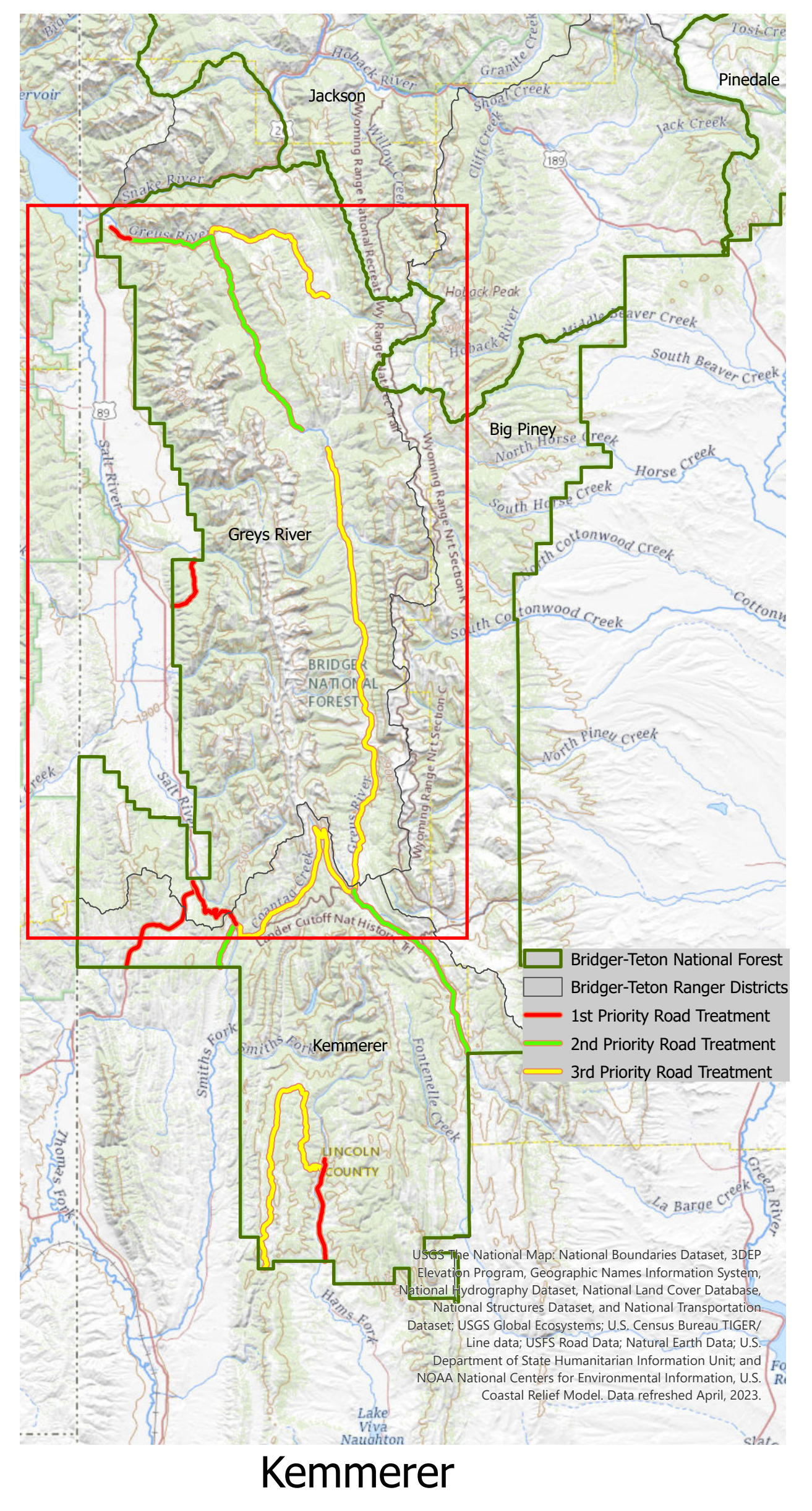
Legend - Large Map

- Bridger-Teton National Forest
- Bridger-Teton Ranger Districts
- USFS Road
- GRRTUnits02282024
- GRRT_Boundary_1500_02282024

Greys River

Acres	Unit	District
1516	6	Greys River
10246	5	Greys River
5166	4	Greys River
1216	3	Greys River

Unit	Subunit	Treatment	Acres	Road	WUJ	Regime	Condition	Proposed Tr
3	3A	3A-4	45	10072	N	III, IV, V	II	Masticate, Broadcast, Cut, Pile Rx
3	3B	3B-1	38	HWY89	N	III, IV, V	I, II	Cut, Pile Rx
3	3B	3B-2	14	HWY89	N	III, IV, V	I, II	Cut, Pile Rx
3	3B	3B-3	16	HWY89	N	III, IV, V	I, II	Cut, Pile Rx
3	3B	3B-4	20	HWY89	N	III, IV, V	I, II	Cut, Pile Rx
3	3B	3B-5	60	HWY89	N	III, IV, V	I, II	Cut, Pile Rx
3	3B	3B-6	28	HWY89	N	III, IV, V	I, II	Cut, Pile Rx
4	4A	4A-1	32	10138	N	III, IV	II	Firewood, Masticate, Cut, Pile Rx
4	4A	4A-2	41	10138	N	III, IV	II	Firewood, Masticate, Cut, Pile Rx
4	4A	4A-3	2	10138	N	III, IV	II	Firewood, Masticate, Cut, Pile Rx
4	4A	4A-4	8	10138	N	III, IV	II	Firewood, Masticate, Cut, Pile Rx
4	4B	4B-1	62	10138	N	III, IV, V	II, III	Firewood, Masticate, Cut, Pile Rx
4	4C	4C-2	36	10138	N	IV, V	II	Firewood, Chip, Masticate, Cut, Pile Rx
4	4C	4C-1	18	10138	N	IV, V	II	Firewood, Chip, Masticate, Cut, Pile Rx
4	4D	4D-1	1	10138	N	III, IV, V	I, II	Firewood, Chip, Masticate, Cut, Pile Rx
4	4D	4D-2	10138	N	III, IV, V	I, II	Firewood, Chip, Masticate, Cut, Pile Rx	
5	5C	5C-1	73	10124	N	III, IV	II	Firewood, Chip, Masticate, Cut, Pile Rx
5	5D	5D-1	25	10124	N	IV	II	Firewood, Chip, Masticate, Cut, Pile Rx
5	5G	5G-1	254	10138	N	III, IV	II	Firewood, Chip, Masticate, Cut, Pile Rx
5	5H	5H-1	92	10138	N	IV	II	Firewood, Chip, Masticate, Cut, Pile Rx
5	5I	5I-1	79	10138	N	III, IV, V	II	Firewood, Chip, Masticate, Cut, Pile Rx
5	5I	5I-2	343	10138	N	III, IV, V	II	Firewood, Chip, Masticate, Cut, Pile Rx
6	6B	6B-1	365	10081	Y	III, IV, V	I, II	Firewood, Chip, Masticate, Cut, Pile Rx
6	6A	6A-1	29	10081	Y	III, IV, V	II	Timber Harvest, Firewood, Chip, Masticate, Cut, Pile Rx
3	3A	3A-3	36	10072	N	III, IV, V	II	Chip, Cut, Pile Rx
4	4D	4D-3	37	10138	N	III, IV, V	I, II	Firewood, Chip, Cut, Pile Rx
4	4D	4D-4	12	10138	N	III, IV, V	I, II	Firewood, Chip, Cut, Pile Rx
4	4D	4D-5	65	10138	N	III, IV, V	I, II	Firewood, Chip, Cut, Pile Rx
5	5A	5A-1	83	10124	N	III, IV, V	II	Firewood, Chip, Cut, Pile Rx
5	5B	5B-1	64	10138	N	III, IV, V	II	Firewood, Chip, Cut, Pile Rx
5	5B	5B-2	15	10138	N	III, IV, V	II	Firewood, Chip, Cut, Pile Rx
5	5F	5F-9	5	10124	N	III, IV, V	II	Firewood, Chip, Cut, Pile Rx
5	5F	5F-8	5	10124	N	III, IV, V	II	Firewood, Chip, Cut, Pile Rx
5	5F	5F-7	1	10124	N	III, IV, V	II	Firewood, Chip, Cut, Pile Rx
5	5F	5F-6	3	10124	N	III, IV, V	II	Firewood, Chip, Cut, Pile Rx
5	5F	5F-5	7	10124	N	III, IV, V	II	Firewood, Chip, Cut, Pile Rx
5	5F	5F-4	2	10124	N	III, IV, V	II	Firewood, Chip, Cut, Pile Rx
5	5F	5F-3	7	10124	N	III, IV, V	II	Firewood, Chip, Cut, Pile Rx
5	5F	5F-2	5	10124	N	III, IV, V	II	Firewood, Chip, Cut, Pile Rx
5	5F	5F-1	10	10124	N	III, IV, V	II	Firewood, Chip, Cut, Pile Rx
5	5E	5E-1	54	10124	N	IV, V	II, III	Firewood, Chip, Cut, Pile Rx



Disclaimer
 Long-established lower elevation winter travel restrictions exist that are not represented on this map. Consult with your local agency for details.
 The USDA Forest Service makes no warranty, expressed or implied regarding the data displayed on this map, and reserves the right to correct, update, modify, or replace this information without notification.