

PLANTS FOR A FIREWISE LANDSCAPE *

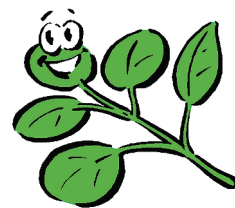
FLOWERS & GROWDCOVERS

Scientific Name

Achillea lanulosa
Aconitum columbianum
Allium cernuum
Allium geoyeri
Anaphalis margaritacea
Antennaria parvifolia
Antennaria rosea
Aquilegia spp.
Aquilegia coerulea
Arabis sp.
Artemesia frigida
Artemesia ludoviciana
Aster leavis
Aster porteri
Calochortus gunnisonii
Campanula rotundifolia
Claytonia lanceolata
Delphinium spp.
Dianthus spp.
Epilobium angustifolium
Erigeron flagellarius
Eriogonum umbellatum
Erysimum asperum
Gaillardia aristata
Galium boreale
Geranium spp.
Geum triflorum
Helianthella quinquenervis
Helianthus pumilus
Heuchera spp.
Ipomopsis aggregata
Iris missouriensis
Leucocrinum montanum
Liatris punctata
Linum lewisii
Lupinus argenteus
Martensia lanceolata
Mimulus guttatus
Monarda fistulosa
Oenothera caespitosa
Penstemon caespitosus
Penstemon seqndiflorus
Penstemon virens
Polemonium
Potentilla fissa
Ratibida columnifera
Rudbeckia hirta
Scutellaria brittonii
Sedum spp.
Sedum lanceolatum
Senecio spartioides
Solidago missouriensis
Thalictrum fendleri
Thermopsis divaricarpa
Tradescantia occidentalis

Common Name

Native yarrow
Columbian monkshood
Nodding onion
Geyer onion
Pearly everlasting
Small-leaf pussytoes
Rosy pussytoes
Columbine
Colorado blue columbine
Rockcress
Fringed sage
Prairie sage
Smoot aster
Porter aster
Mariposa lily
Common harebell
Spring beauty
Delphinium
Pinks
Fireweed
Whiplash dairy, trailing fleabane
Sulphur flower
Western wallflower
Blanket flower
Northern bedstraw
Hardy geraniums
Prairie smoke
Aspen sunflower
Small sunflower
Coral bells
Scarlet gilia
Native iris
Sand lily
Dotted gayfeather
Wild blue flax
Silver lupine
Narrow-leaved chiming bells
Yellow monkey-flower
Native beebalm
White stemless evening primrose
Mat penstemon
Sidebells
Blue mist penstemon
Jacobs ladder
Leafy potentilla
Prairie coneflower
Black-eyed Susan
Skullcap
Stonecrop
Yellow stonecrop
Broom groundsel
Smooth goldenrod
Fendler meadowrue
Spring golden banner
Western spiderwort



PLANTS FOR A FIREWISE LANDSCAPE *

SHRUBS

Scientific Name

Arctostaphylos uva-ursi
Betula ganulosa
Ceanothus fendleri
Cercocarpus intricatus
Cercocarpus montanus
Chrysothamnus spp.
Cornus stolonifera
Holodiscus dumosus
Jamesia americana
Mahonia repens
Philadelphus microphyllus
Psysocarpus monogynus
Prunus besseyi
Purshia tridentata
Ribes aureum
Rhus sp.
Rosa woodsii
Shepardia canadensis
Symphoricarpos spp.
Viburnum edule
Yucca glauca

Common Name

Kinnikinnick, bearberry
Bog birch
Buckbrush, mountain lilac
Little-leaf mountain mahogany
True mountain mahogany
Rabbitbrush
Redwig dogwood
Ocean spray, cliff/rock spirea
Wax flower
Creeping grape holly
Little-leaf mockorange
Mountain ninebark
Western sand cherry
Antelope bitterbrush
Golden currant
Sumac
Woods or native wild rose
Russet buffaloberry
Snowberry, coralberry
Highbush cranberry
Spanish bayonet, small soapweek,
Great plains yucca



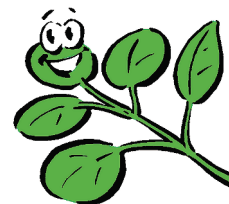
LARGE SHRUBS AND TREES

Scientific Name

Acer ginnala
Acer glabrum
Acer grandidentatum
Acer tataricum
Alnus tenuifolia
Amelanchier alnifolia
Amelanchier utahensis
Betula nigra
Betula occidentalis
Cercocarpus ledifolius
Corylus cornuta
Crataegus spp.
Fraxinus pennsylvanica
Gleditsia triacanthos
Malus ssp.
Populus angustifolia
Populus tremuloides
Prunus americana
Prunus pennsylvanica
Prunus virviniana melanocarpa
Rubus delisiosus
Salix amygdaloides
Shepherdia argentea
Sorbus scopulina

Common Name

Amur maple, Ginnala maple
Rocky Mountain maple
Wasatch maple, Canyon maple
Tatarian maple
Thinleaf alder
Saskatoon alder-leaf serviceberry
Utah serviceberry
River birch
Western water birch
Mountain mahogany
Filbert, beaked hazelnut
Hawthorn (several native)
Green ash
Honeylocust
Crabapple
Narrowleaf cottonwood
Aspen
American wild plum
Pine/fire/wild red cherry
Western chokecherry
Boulder raspberry, thimbleberry
Peachleaf willow
Silver buffaloberry
Western mountain ash



*** Some plants, shrubs and trees will not grow at higher elevations.
Check with your State Forestry Office or Master Gardener before planting.**