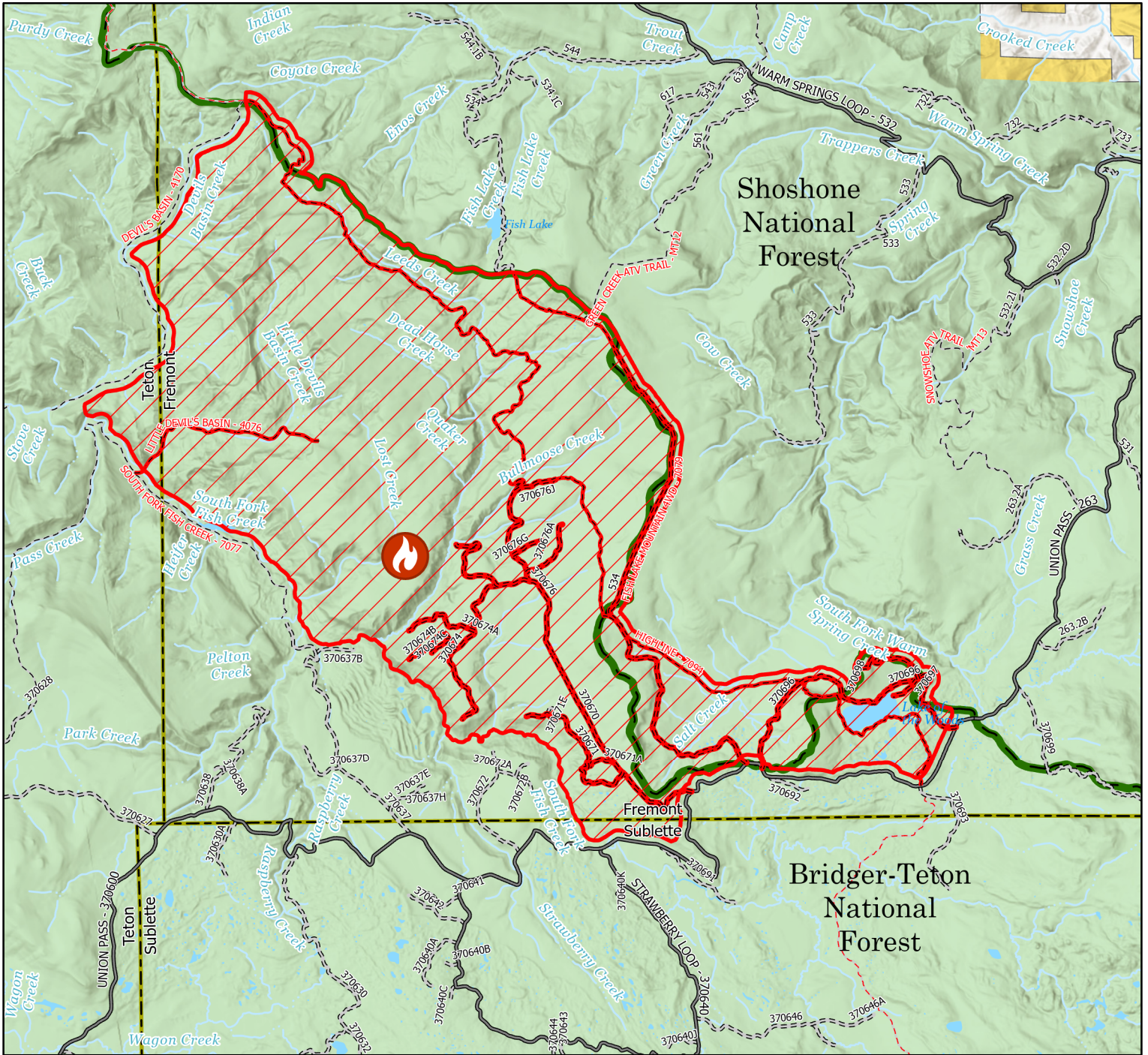




# Leeds Creek Fire Area, Road and Trail Closure - Order #: 04-03-24-307

Bridger-Teton & Shoshone National Forests, Pinedale & Wind River Ranger Districts

Exhibit A



## Legend

- Described Area
- Closed\_Roads
- Closed\_Trails
- Leeds Creek Fire
- USFS Roads (High Clearance Vehicles)
- USFS Roads (Passenger Cars)
- USFS - Trails
- Continental Divide Trail
- Forest Boundary
- USFS
- BLM
- Private



NAD 1983  
UTM Zone  
12N

