



# OUTREACH NOTICE OUTREACH NOTICE



**USDA Forest Service  
Bridger-Teton National Forest  
North Zone: Blackrock Ranger District  
GS-0462-05/06 Lead Forestry Technician (Wildland Fire Module)  
Permanent Career Seasonal (18-8) Opportunity**

**This position will be filled during the Non-Centralized Phase 3 R4 Hiring Event. Vacancy announcement will be open in USAJobs from February 7<sup>th</sup>- February 16<sup>th</sup>, 2024.  
Announcement #: 24-FIRE-P3GVA-HCREW-56DH**

Teton Wildland Fire Module is looking to fill a career seasonal– **Lead Forestry Technician (18/8)** position. The duty station for this position is Moran, Wyoming. Government housing may be available. The position will support diverse fire and fuels management activities on a local and national scale. PDs for the position are FS0280/FS6077.

## **About the Position**

This position serves as Squad Boss for a Type 1 Wildland Fire Module (WFM). The Teton WFM provides an innovative, safe, highly mobile, logistically independent, and versatile team with a commitment to achieving diverse fire and fuels management objectives. The primary mission of the module is to provide a skilled, efficient workforce to accomplish the full range of wildland fire management tasks including: prescribed fire preparation and implementation, managing fire for resource benefit, mechanical fuels reduction, hazard tree removal, and wildland fire suppression.

The ability to work collaboratively with the Park Service, National Elk Refuge, Teton County Fire and EMS, State and local governments, adjoining National Forests, other forest program areas and the ability to develop and maintain strong community relationships are critical for the position. The Teton Wildland Fire Module is staffed with employees from both park and forest units.

## **Duties:**

The position will play a key leadership role and:

- Uses technical equipment such as programmable two way radios, GPS units, weather monitoring equipment, computers for accessing fire weather, fire modeling and mapping programs. Assists in the technical decisions and implementing appropriate strategy and tactics.
- Participates in the planning and implementing work activities such as setting priorities, identifying objectives, coordinating resources, vehicles, supplies and equipment, developing job hazard analysis, and conducting job skill training.

- Recognizes, reacts to, and communicates changes in predicted weather and fire behavior, topography and fuel types, and adapts planned strategies and tactics to identify and locate firelines, escape routes and safety zones.
- Works with other resource managers in the development and implementation of prescribed burn plans. Participates with the supervisor in developing and implementing training programs (mandatory, formal and informal) to comply with policy and regulations and to develop and implement a comprehensive physical training program.

**IFPM Requirements:** Qualified Firefighter Type 1 (FFT1), completion of S-290, and greater than 90 days of wildland firefighting experience.

Target qualifications that are desirable but not required for this position include:

- Crewboss (CRWB)
- Firing Boss (FIRB)
- Incident Commander Type 4 (ICT4)
- Field Observer (FOBS)
- Fire Effects Monitor (FEMO)
- Faller type two (FAL2)
- Helicopter crew member (HECM)

**Firefighter Retirement Coverage:** This position was approved for primary/rigorous firefighter retirement coverage under the provisions of 4 U.S.C 8336 c and U.S.C 8412 d by USDA under FERS and CSRS on 6/28/2005.

**Work Capacity Test (WCT) for Wildland Firefighters:** This position participates in wildland firefighting activities. Based on the type of work performed, TAKING and PASSING the WCT at the ARDUOUS level is a “condition of employment.” The Arduous fitness (Pack) Test consists of a three (3) mile hike, within forty-five (45) minutes, while carrying a forty-five (45) pound pack.

Please respond by emailing the Outreach Notice Form with a resume and current master record to Eric Hawes, (Teton Wildland Fire Module Supervisor) at [eric.hawes@usda.gov](mailto:eric.hawes@usda.gov) before March 1<sup>st</sup>, 2024. Questions can be directed to Eric Hawes at 307-699-1705.

### **About the Forest**

The Bridger-Teton National Forest (BTNF) is part of the largest intact ecosystem in the lower 48 states. The 3.4 million acres stretch from the southern border of Yellowstone National Park, covering the entire eastern flank of Grand Teton National Park, wrapping around Jackson Hole valley, to the sagebrush prairies of southwest-central Wyoming.

The Greater Yellowstone Ecosystem is a loosely defined area characterized by high elevation coniferous forests, sage/grass steppes, mountain ranges and deep valleys, large expanses of wild lands and three wilderness areas, abundant wildlife, and internationally recognized scenic and natural features.

The Forest includes headwaters of three nationally significant rivers (Yellowstone, Snake and Green). Tributaries to these rivers are considered exceptional in trout habitat and home to native strains of cutthroat trout.

Some of the largest and most diverse populations of mammals in North America exist here. This ecosystem still includes all of the major carnivores, an indication of its ecological completeness. The BTNF includes undisturbed habitat for threatened and endangered species including the grizzly bear. The Forest’s wild lands are large and relatively unaltered by human activity, making them valuable for scientific study and determining baseline conditions for comparison elsewhere.

Recreation opportunities and scenic quality are internationally renowned. The BTNF attracts over 2.6 million visitors each year. The three wilderness areas cover over 1.3 million acres; the Bridger, the Teton and the Gros

Ventre totaling more than one-third of the BTNF acreage, and containing major migration routes for wildlife. The Forest offers some of the nation's best opportunities for winter sports. Two major ski resorts, Jackson Hole Mountain Resort and Snow King, are located on the Forest. The backcountry landscape contains a multitude of cross-country skiing trails and miles of trails for snowmobiling. Summer recreation contains a trail system of some 3000 miles and a network of scenic roads stretching more than 2500 miles. The Forest also offers unique features such as the scenic and challenging Snake River Canyon, where more than 150 thousand visitors float through its whitewater each year; the Gros Ventre Slide, one of the largest natural landslides in the country; Periodic Springs on Swift Creek near Afton, which is one of the few coldwater geysers in the world; Fremont Lake, the second largest lake in the State of Wyoming, and one of the deepest in the U.S.; Kendall Warm Springs known as the only home for the Kendall Warm Springs Dace; and Gannett Peak (elev. 13,804) the highest point in Wyoming.

The BTNF also has important commodity resources. Scientists believe that there are large reserves of oil and gas trapped beneath the Forest landscape. Approximately 360,000 acres are open to oil and gas leasing.

Pine, spruce and fir have long supported the local logging industry. The Forest offers approximately 10 to 12 million board feet annually, of which about one third is non-commercial firewood, and post and poles for fences. The timber volume continues on a declining trend, reflecting the societal values for wildlife, scenic landscapes, and sense of place.

The BTNF also contains some of the richest grazing lands in Wyoming, where more than 40,000 cattle, 2000 horses and, and 80,000 sheep graze annually.

### **The Blackrock Ranger District**

The scenic 720,000 acre Blackrock Ranger District is bounded by Yellowstone National Park to the north, Grand Teton National Park to the west, the Shoshone National Forest to the east, and the BRNF's Jackson Ranger District to the south. The District includes only a small amount of private inholdings. The historic Blackrock Ranger Station compound itself is approximately one square mile in size, with numerous housing units, worksites, and warehouse situated within its' boundaries.

Central to the District is its large and varied recreation/wilderness program. There is a high volume of recreation use through outfitter guides, several developed campgrounds, and dispersed use. There are several historic guard stations on the District located in the Teton Wilderness area. The most remote spot in the lower 48 states (in terms of distance from roads) is located in the Teton Wilderness.

Other programs on the District include active timber sales, and a large and active whitebark pine management program. Working relationships with other federal and state agencies, Teton County government, and many non-governmental organizations are very good with many partnerships ongoing.

Moran is served by the Teton County School District; there is an excellent elementary school in Moran with K through 5<sup>th</sup> grades. Grades 6 -12 are bused approximately 40 miles to Jackson, WY.

### **The Jackson Ranger District**

The Jackson Ranger District covers roughly 695,451 acres that are bounded by Grand Teton National Park, Teton Basin and Palisades Ranger Districts of the Caribou-Targhee; Blackrock, Pinedale, Big Piney, and Big Piney Ranger Districts of the Bridger-Teton; the Wind River Ranger District of the Shoshone National Forest; the National Elk Refuge; and private lands. Field season is yearlong due to heavy recreational use during all seasons. The north zone manages over 240 outfitter and guide and recreation special use permits, and roughly 230 non-recreation special use permits. This setting combined with being a national destination for tourism make the Jackson District one of the most complex in Region 4. The District has an excellent tenured staff. The District manages most of the 317,874 acre Gros Ventre Wilderness, whose western boundary is less than ½ mile from the town of Jackson. The District manages 2 ski areas and several developed campgrounds as well as the Snake River corridor, which includes one of the most highly used whitewater sections in the nation. Areas with high levels of dispersed summer and winter uses are also common. The District is actively addressing a number of

Wildland Urban Interface issues through the fire and fuels, and vegetation management programs. The grazing program includes 3 forage reserves and 12 active allotments. The District has an active wildlife program as well. Working relationships with other agencies, local government, and many non-governmental organizations are very good with many productive and diverse partnerships.

### **The Community**

Jackson, Wyoming, home of the Bridger-Teton National Forest, Supervisor Office, lies in the Jackson Hole Valley which is approximately sixty miles long by twenty miles wide. This beautiful alpine valley is a magical playground nestled in the shadow of the towering, majestic Teton Mountains on the west and the Gros Ventre Mountains on the east. It is located in the northwestern corner of Wyoming. Jackson lies in Teton County which covers 2,873 square miles. Jackson's elevation is approximately 6,200 feet above sea level.

The alpine climate results in four distinct seasons. During recent years the coldest temperature recorded was -36°F on December 12, 1990 and the warmest recorded was 95°F on June 25, 1988. Snowfall ranges from 88 to 400 inches per year depending on location. Annual rain precipitation averages 15.2 inches.

Jackson is a world renowned resort town with a population of 10,000+ inhabitants. "Something for everyone" is the perfect description for Jackson - tennis, swimming, golfing, shopping, world renowned skiing resorts (Snow King, Teton Village, and Targhee), the Grand Teton Music Festival's classical music, and of course, all the great outdoor recreational sports such as hiking, mountain climbing, hunting, fishing, snowmobiling, boating, four wheeling, wildlife viewing, whitewater rafting, bicycling, horseback riding and camping.

Jackson Hole is served by the Teton County School District, Central Wyoming College, and several private and religious pre-schools, kindergartens and elementary schools.

	Number of Schools
Kindergarten	1
Elementary	6
Middle School	2
High School	1

Teton County employed 23,987 people in 2004 at an unemployment rate of 3.1%. There is a high percentage of governmental employment in Teton County. The governmental agencies are represented by the Bridger-Teton National Forest, Grand Teton National Park, Yellowstone National Park, the National Elk Refuge, Wyoming Game and Fish, Town of Jackson and Teton County employees.

Since only 3% of the land in Jackson Hole is privately owned, land and housing is extremely expensive. A three bedroom, standard home on a 1/8-acre lot is commonly priced over \$1,000,000+. A standard two/three bedroom rental cost \$2,000+ plus per month. There is a 6% State and County tax on goods. Real estate is high, but there is no personal State income tax. Forest Service affiliated day care facilities are not available. Government housing may be available for this position.

St. John's Hospital provides good health care services in the Jackson Hole area. Comprehensive care includes 24-hour emergency services, general surgery, professional home care, an outpatient Surgical Center, sports medicine, wellness programs and the St. John's Living Center long-term care facility. Other medical services include general internists, obstetricians, gynecologists, family physicians, radiologists, orthopedists, physical therapists, psychiatrists, psychologists, licensed social workers, ophthalmologists, a dermatologist, dentists, orthodontists, chiropractors, and EMT services.

There is a wide range of religious services available in area.

The Town of Jackson provides a 21 active-officer Police Department, 35 sworn County Sheriff Deputies, and 37 firefighting trucks and water support equipment in the Volunteer Fire Department. Other utilities that are available are: electricity, natural gas, water, sewer, trash removal, recycling, and telephone communications.

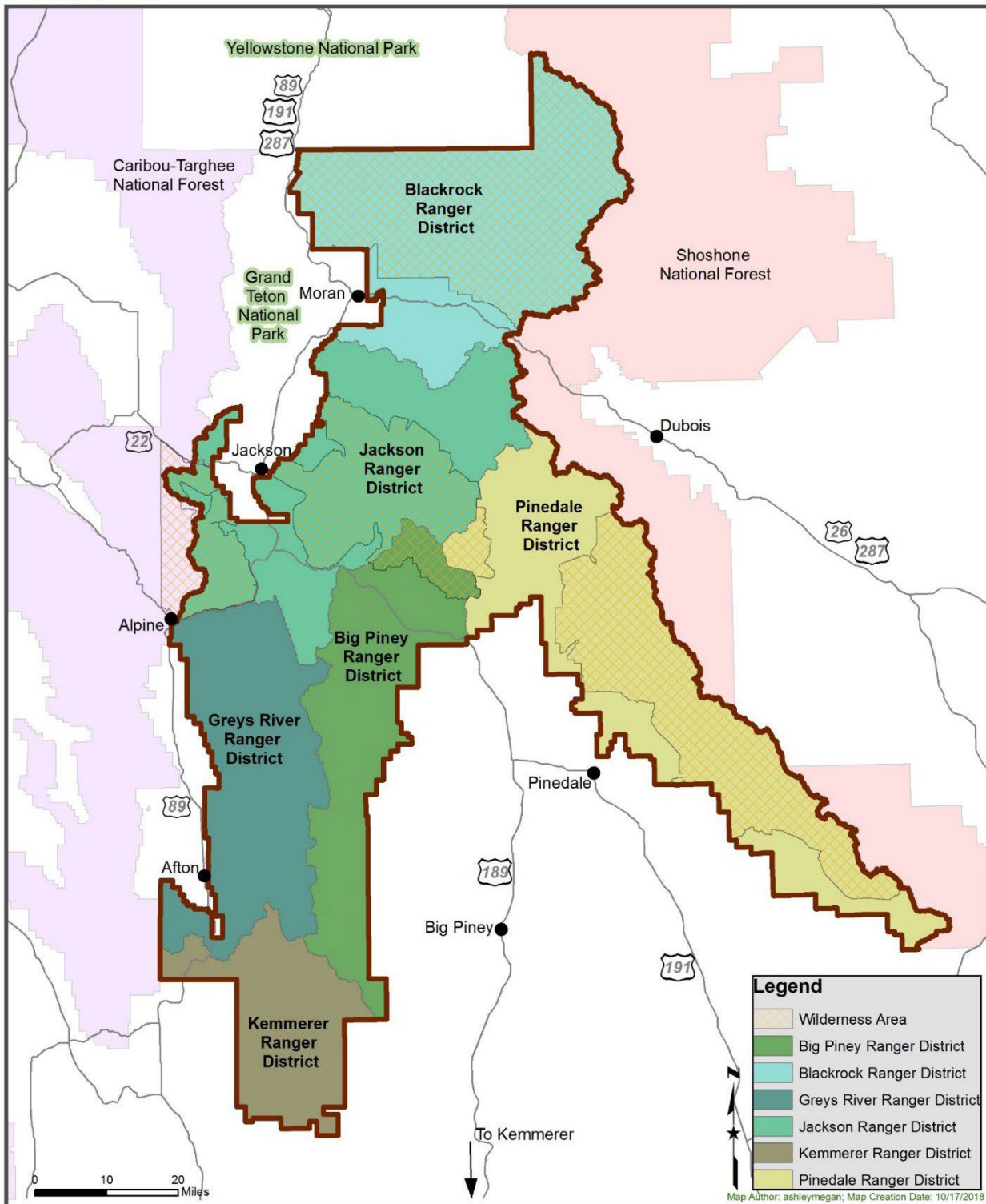
Transportation into and out of Jackson is available via air service and auto. Three carriers provide year around air service. Currently there are 13 direct non-stop flights to Jackson from cities across the United States. United Express services Jackson from Denver International Airport. Sky West/Delta Airlines serves Jackson from its hub in Salt Lake City. During the summer months and the ski season, Jackson receives additional service from United Airlines and American Airlines. Car rentals and taxi service are available at several locations around town including the airport. Public and private bus service is provided between the airport, Jackson, and Teton Village.

Driving distance from Jackson are listed below:

<b>To:</b>	<b>Miles</b>
Kemmerer, Wyoming	155
Big Piney, Wyoming	90
Afton, Wyoming	70
Pinedale, Wyoming	77
Buffalo Ranger District	43
Ogden, Utah (Regional Office)	243
Billings, Montana	316
Casper, Wyoming	284
Denver, Colorado	512
Idaho Falls, Idaho	95
Salt Lake City, Utah	280
South entrance Yellowstone National Park	59
South entrance Grand Teton National Park	13



# BRIDGER-TETON NATIONAL FOREST



Please contact the individual below for more information or to express interest in applying for this position:

**Eric Hawes**  
Teton WFM Supervisor  
[eric.hawes@usda.gov](mailto:eric.hawes@usda.gov) or 307-699-1705

## OUTREACH NOTICE FORM

GS-0462-05/06 Lead Forestry Technician (Wildland Fire Module)  
**BRIDGER-TETON NATIONAL FOREST**

**Please Respond by March 1, 2024**

**Email responses to [eric.hawes@usda.gov](mailto:eric.hawes@usda.gov) (307-699-1705)**

NAME: \_\_\_\_\_

EMAIL: \_\_\_\_\_

MAILING ADDRESS: \_\_\_\_\_

\_\_\_\_\_

TELEPHONE NUMBER: \_\_\_\_\_

AGENCY EMPLOYED WITH: \_\_\_\_\_ USFS \_\_\_\_\_ BLM \_\_\_\_\_ OTHER

TYPE OF APPOINTMENT: \_\_\_\_\_ PERMANENT \_\_\_\_\_ TEMPORARY \_\_\_\_\_ TERM  
\_\_\_\_\_ VRA \_\_\_\_\_ PWD \_\_\_\_\_ OTHER

CURRENT REGION/FOREST/DISTRICT: \_\_\_\_\_

CURRENT SERIES AND GRADE: \_\_\_\_\_

CURRENT POSITION TITLE: \_\_\_\_\_

CURRENT RED CARD QUALIFICATIONS: \_\_\_\_\_

OUTREACH POSITION OF INTEREST:

**Please provide your updated resume and current master record with this form.**

IF NOT A CURRENT PERMANENT (CAREER OR CAREER CONDITIONAL) EMPLOYEE ARE YOU ELIGIBLE TO BE HIRED UNDER ANY OF THE FOLLOWING SPECIAL AUTHORITIES:

- \_\_\_\_\_ PERSON WITH DISABILITIES
- \_\_\_\_\_ VETERANS READJUSTMENT
- \_\_\_\_\_ DISABLED VETERANS W/30% COMPENSABLE DISABILITY
- \_\_\_\_\_ VETERANS EMPLOYMENT OPPORTUNITIES ACT OF 1998
- \_\_\_\_\_ FORMER PEACE CORPS VOLUNTEER
- \_\_\_\_\_ STUDENT CAREER EXPERIENCE PROGRAM
- \_\_\_\_\_ OTHER \_\_\_\_\_

*Thank you for your interest in our Vacancy!*