

# OUTREACH NOTICE



**USDA FOREST SERVICE  
Bridger-Teton National Forest  
East Zone: Pinedale and Big Piney Ranger Districts**

**GS-0462-08/09 Zone Fuels AFMO**

**This position will be filled during the Non-Centralized Phase 3 R4 Hiring Event. Vacancy announcement will be open in USA Jobs from February 7th- February 16th, 2024.**

**Announcement #: 24-FIRE-P3GVA-DFUEL-89DH**

## **ABOUT THE POSITION**

**The Bridger-Teton National Forest (BTNF) is seeking to fill 1 Forestry Technician (Fuels) GS-0462-08/09 position. Duty location for this position of Pinedale, WY. PDs for this position are FS0934/FS0867**

Bridger-Teton National Forest fire management is a fully integrated, Interagency program with wildland fire operations/management, fuels management and prevention. The zone fuels AFMO will be expected to be an active participant in all areas of the BTNF fire program. This position provides oversight for and planning the implementation of the zone fuels projects. The incumbent is responsible for hazardous fuels planning and implementation, prescribed burning, mechanical vegetation treatments. For more information on Teton Interagency Fire, visit [www.tetonfires.com](http://www.tetonfires.com)

Duties and Responsibilities include but are not limited to:

- Fuels, Prescribed burning, and smoke management for the Zone.
- Implementation of zone fuels projects.
- Coordinating with multi-disciplinary and interagency partners/cooperators
- Leader in the wildland fire for resource benefit and assists in zone fire operations (IC, Zone Duty Officer, WFDSS etc.)

This position is categorized as District/Zone Fuels AFMO (DFPFM) position that is subject to the Forest Service Fire Program Management (FS-FPM) Standard and Guide, as designated by the W.O. Fire and Aviation Management. The FS-FPM minimum qualification standards (MQS) for this position must be met prior to entrance into the position as a condition of hire. Refer to the Forest Service FS-FPM Standard Position Description Crosswalk for a full description of the MQS. <https://www.fs.usda.gov/sites/default/files/2021-12/IFPM-FS-FPM-Crosswalk.pdf>

**Minimum Qualifications Pathway 1: RXB2 –and- ENGB or CRWB (Currency required). Pathway 2: RXB2 -and- FELB or HEQB (Currency required)**

**FIREFIGHTER RETIREMENT COVERAGE:** This is a covered secondary position description under the provisions of 5USC 8336 (c) and 8412 (d). Ninety (90) days of experience as a primary/rigorous wildland firefighter or equivalent experience outside federal employment as a basic qualification requirement for this position. This position has been approved for secondary firefighter coverage under CSRS and FERS by USDA on June 28, 2005; E1 (AFM030).

WORK CAPACITY TEST (WCT) for Wildland Firefighters: This position participates in wildland firefighting activities. Based on the type of work performed, TAKING and PASSING the WCT at the ARDUOUS level is a "condition of employment." The Arduous fitness (Pack) Test consists of a three (3) mile hike, within forty-five (45) minutes, while carrying a forty-five (45) pound pack.

Please respond by emailing the Outreach Notice Form with a resume and current master record to:

**Contact Information: Brian Nate, East Zone FMO, 208-221-6236, [brian.nate@usda.gov](mailto:brian.nate@usda.gov)**

### **ABOUT THE FOREST**

The Bridger-Teton National Forest (BTNF) is part of the largest intact ecosystem in the lower forty-eight states. The 3.4 million acres stretch from the southern border of Yellowstone National Park, covering the entire eastern flank of Grand Teton National Park, wrapping around Jackson Hole valley, to the sagebrush prairies of southwest-central Wyoming.

The Greater Yellowstone Ecosystem is a loosely defined area characterized by high elevation coniferous forests, sage/grass steppes, mountain ranges and deep valleys, large expanses of wild lands and three wilderness areas, abundant wildlife, and internationally recognized scenic and natural features.

The Forest includes headwaters of three nationally significant rivers (Yellowstone, Snake and Green). Tributaries to these rivers are considered exceptional in trout habitat and home to native strains of cutthroat trout.

Some of the largest and most diverse populations of mammals in North America exist here. This ecosystem still includes all the major carnivores, an indication of its ecological completeness. The BTNF includes undisturbed habitat for threatened and endangered species including the grizzly bear. The Forest's wild lands are large and relatively unaltered by human activity, making them valuable for scientific study and determining baseline conditions for comparison elsewhere.

Recreation opportunities and scenic quality are internationally renowned. The BTNF attracts over 2.2 million visitors each year. The three wilderness areas cover over 1.3 million acres: the Bridger, the Teton and the Gros Ventre totaling more than one-third of the BTNF acreage and containing major migration routes for wildlife. There are 315 miles of designated Wild and Scenic Rivers on the Forest. The Forest offers some of the nation's best opportunities for winter sports including Jackson Hole Mountain Resort, Snow King, and White Pine ski areas. The backcountry landscape contains a multitude of cross-country skiing trails and miles of trails for snowmobiling. Summer recreation contains a trail system of some three thousand miles and a network of scenic roads stretching more than 2500 miles. The Forest also offers unique features such as the scenic and challenging Snake River Canyon, where more than 150 thousand visitors float through its whitewater each year; the Gros Ventre Slide, one of the largest natural landslides in the country; Periodic Springs on Swift Creek near Afton, which is one of the few cold water geysers in the world; Fremont Lake, the second largest lake in the State of Wyoming, and one of the deepest in the U.S.; Kendall Warm Springs known as the only home for the Kendall Warm Springs Dace; and Gannett Peak (elev. 13,804) the highest point in Wyoming.

The BTNF also has important commodity resources. Scientists believe that there are large reserves of oil and gas trapped beneath the Forest landscape. Approximately 360,000 acres are open to oil and gas leasing.

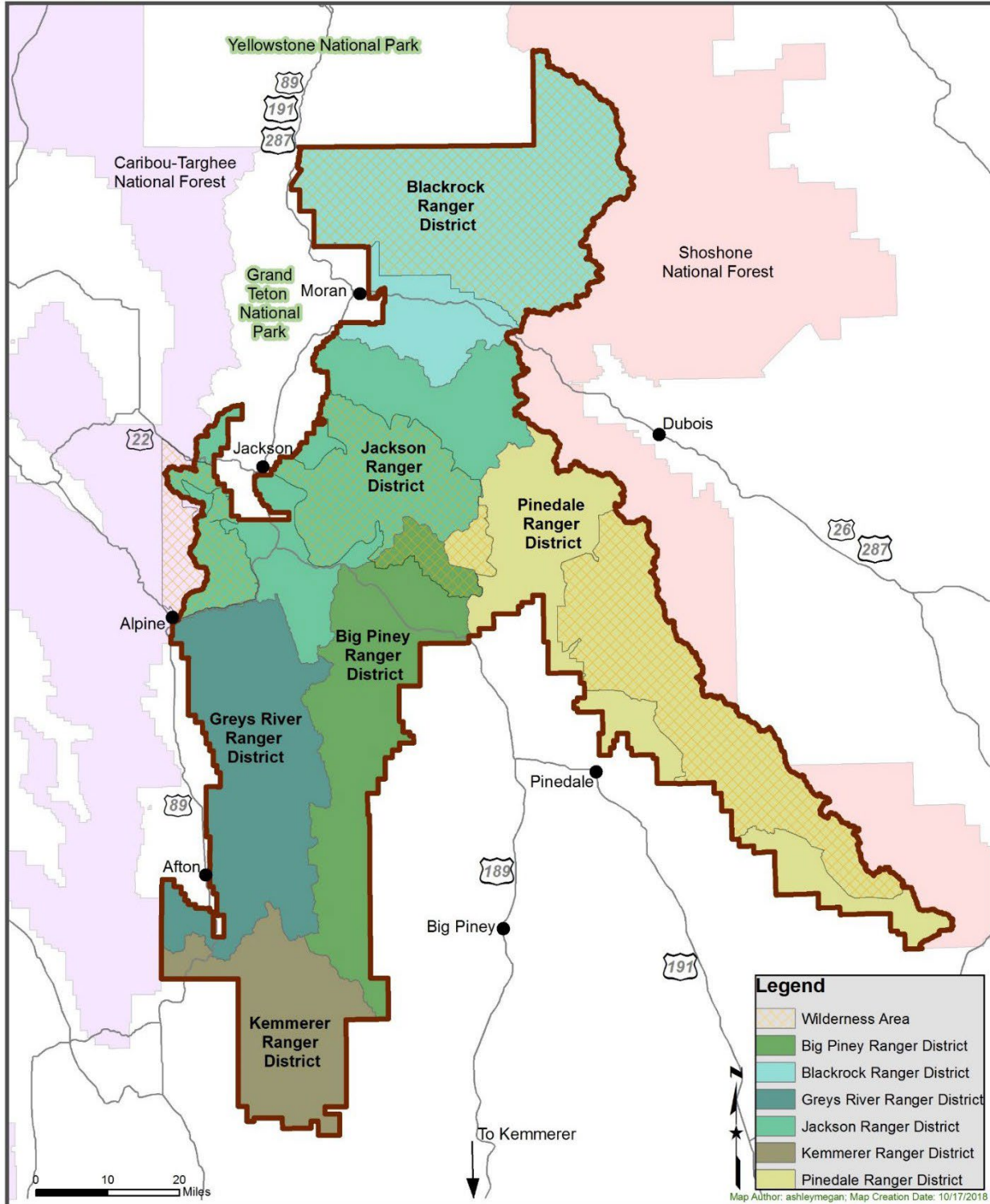
Pine, spruce, and fir have long supported the local logging industry. The Forest offers approximately 10 to 12 million board feet annually, of which about one third is non-commercial firewood, and post and poles for fences. The timber volume continues on a declining trend, reflecting the societal values for wildlife, scenic landscapes, and sense of place.

The BTNF also contains some of the richest grazing lands in Wyoming, where more than 40,000 cattle, 2000 horses and, and 80,000 sheep graze annually.

**Pinedale:**

The Town of Pinedale sits at an elevation of 7,200 feet at the base of the Wind River Range, providing amazing views of the Continental Divide. The Pinedale Ranger District, located in Pinedale WY, is eighty miles southeast of Jackson, WY and one hundred miles North of Rock Springs WY. At 830,000 acres in size, the Pinedale Ranger District offers a wide range of recreation settings and opportunities for both locals and visitors, including the entire 428,169-acre Bridger Wilderness.

With over 2,300 lakes, forty-eight peaks above 12,500 feet (including Gannet Peak, the highest peak in Wyoming), and five hundred miles of trails, the Bridger Wilderness offers internationally recognized backpacking, fishing, climbing, hunting, and horseback riding opportunities. Outside of the Wilderness you can find glacial-carved lakes providing excellent opportunities for developed and dispersed camping, fishing, boating, hunting, horseback riding, and motorized recreation.



**The map shows the Pinedale and Big Piney Ranger Districts.**

**THANK YOU FOR YOUR INTEREST IN OUR POSITION ON THE BRIDGER-TETON NF**

OUTREACH RESPONSE FORM

**GS-0462-08/09 Zone Fuels AFMO**  
**BRIDGER-TETON NATIONAL FOREST**  
**Responses Due by March 1, 2024**  
U.S. Forest Service

Please return your completed response form to Brian Nate, East Zone FMO.

Brian.nate@usda.gov

Your Name: \_\_\_\_\_ Email: \_\_\_\_\_

Mailing Address: \_\_\_\_\_

Telephone Number \_\_\_\_\_

AGENCY EMPLOYED WITH: \_\_\_\_\_USFS \_\_\_\_\_NPS

TYPE OF APPOINTMENT: \_\_\_\_\_PERMANENT\_TEMPORARY\_TERM

CURRENT REGION/FOREST/DISTRICT: \_\_\_\_\_

CURRENT SERIES AND GRADE: \_\_\_\_\_

CURRENT POSITION TITLE: \_\_\_\_\_

CURRENT RED CARD QUALIFICATIONS \_\_\_\_\_

*Please attach resume with references and current IQCS Master Record.*

*Thank you for your interest!*

JOB RELATED EXPERIENCE