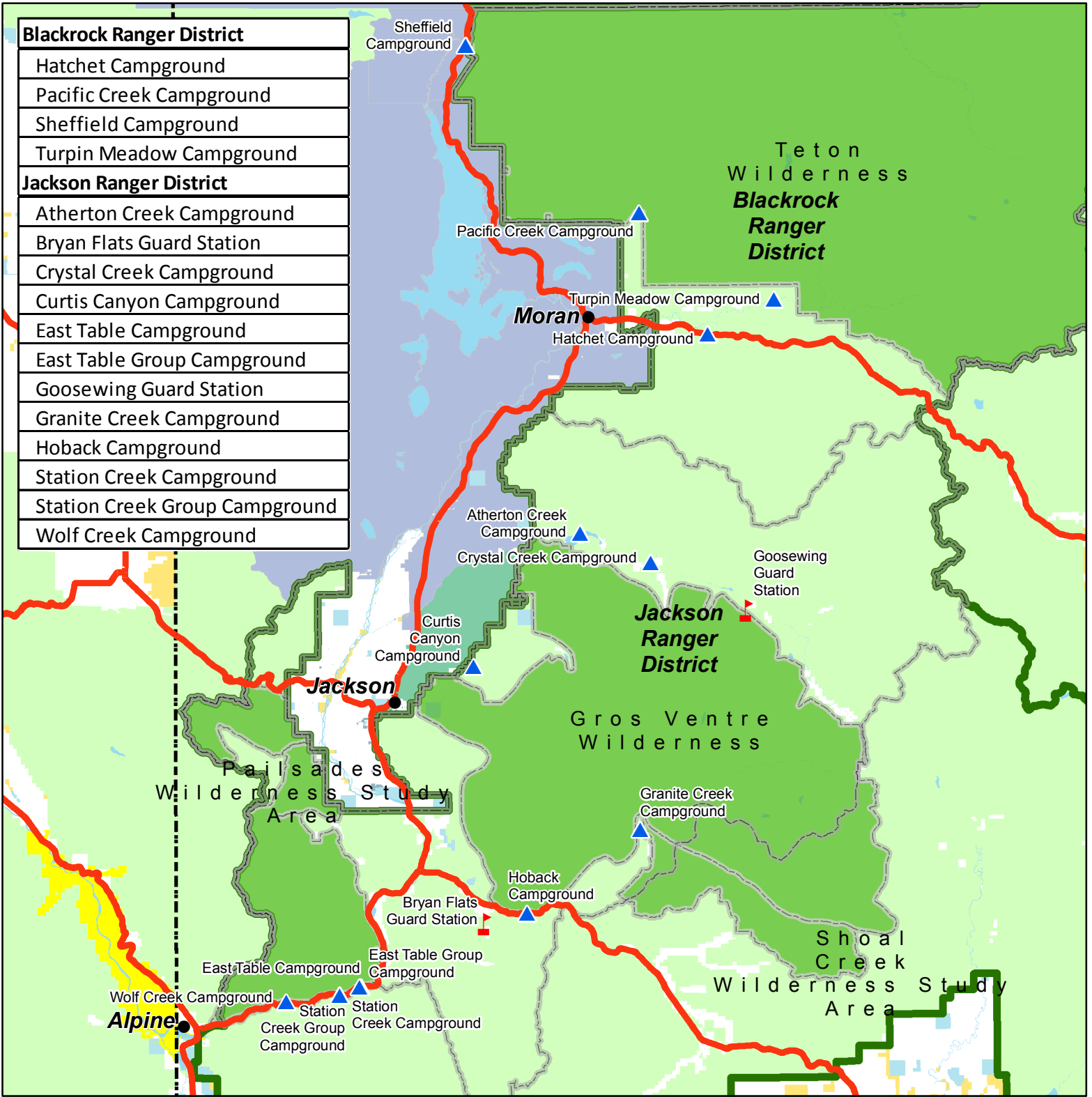




Forest Order 04-03-506 - Designated Sites with Approved Fire Structures

Bridger-Teton National Forest - Blackrock and Jackson Ranger Districts

Blackrock Ranger District
Hatchet Campground
Pacific Creek Campground
Sheffield Campground
Turpin Meadow Campground
Jackson Ranger District
Atherton Creek Campground
Bryan Flats Guard Station
Crystal Creek Campground
Curtis Canyon Campground
East Table Campground
East Table Group Campground
Goosewing Guard Station
Granite Creek Campground
Hoback Campground
Station Creek Campground
Station Creek Group Campground
Wolf Creek Campground

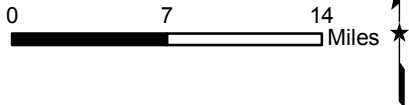


Legend

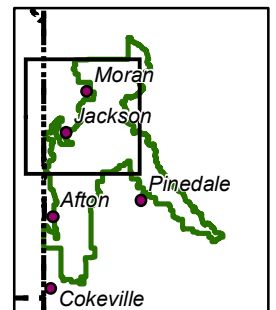
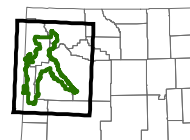
Approved Fire Site

- Guard Station
- Campground

Wilderness and Wilderness Study Areas



WYOMING



Disclaimer
The USDA Forest Service makes no warranty, expressed or implied regarding the data displayed on this map, and reserves the right to correct, update, modify, or replace this information without notification.