

OUTREACH NOTICE

OUTREACH NOTICE



USDA FOREST SERVICE
Bridger-Teton National Forest
North Zone: Jackson and Blackrock Ranger Districts
GW-0462-6/7 District/Zone Fuels Technician
NTE 120 day Detail/Temporary Promotion Opportunity
Please respond to the Outreach by June 12 for consideration.
Targeted start date for detail: June 29st, 2026

ABOUT THE POSITION

The Bridger-Teton National Forest (BTNF) is seeking to a NTE 120 day detail/temporary promotion for a GW-0462 -6/7 Zone Fuels Technician for the North Zone BTNF (Jackson and Blackrock Ranger Districts). PDs for the position are FS0932/FS0933. Duty station may be either Jackson, WY or Moran, WY.

Bridger-Teton National Forest fire management is a fully integrated, Interagency program with wildland fire operations/management, fuels management and prevention. The zone fuels technician will be expected to be an active participant in all areas of the BTNF fire program. This position provides oversight for implementation including prescribed burning, mechanical vegetation treatments, effects monitoring of hazardous fuel reduction projects. For more information on Teton Interagency Fire, visit www.tetonfires.com

Duties and Responsibilities include and are not limited to:

- Serves on prescribed fire and fuels projects. Technically administers routine aspects of the prescribed fire/fuels plan, ensuring that preparation, ignition, holding, mop-up, and rehabilitation are completed to the standards specified. Assists in GIS, modeling and Burn Plan writing.
- During the implementation of prescribed fire plans, fuels projects, and wildland fire monitoring plans, assists in monitoring fire behavior, evaluating fire effects, identifying potential problems and making basic recommendations by reviewing fuel treatment alternatives and designing a prescribed fire to achieve the objective.
- Assists in conducting field reconnaissance of prescribed fire/fuels treatment units, summarizes field findings and makes basic recommendations on appropriate prescriptive criteria for meeting program objectives. May serve as a Technical Monitor or Contracting Officer Representative (COR).
- Collects biweekly Fuels Samples on the North Zone BTNF. Inputs results in National Database.
- Provides for training needs to support prescribed fire and fuels management programs.
- Supports wildland fire suppression activities.

This position is categorized as a District Fuels Technician (DFTEC) position that is subject to the Forest Service Fire Program Management (FS-FPM) Standard and Guide, as designated by the W.O. Fire and Aviation Management. The FS-FPM minimum qualification standards (MQS) for this position must be met prior to entrance into the position as a condition of hire. Refer to the Forest Service FS-FPM Standard Position Description Crosswalk for a full description of the MQS. <https://www.fs.usda.gov/managing-land/ifpm>

Minimum Qualifications: FFT1 -and- ICT5 (Currency required)

FIREFIGHTER RETIREMENT COVERAGE: This is a covered secondary position description under the provisions of 5USC 8336 (c) and 8412 (d). Ninety (90) days of experience as a primary/rigorous wildland firefighter or equivalent

experience outside federal employment as a basic qualification requirement for this position. This position has been approved for secondary firefighter coverage under CSRS and FERS by USDA on June 28, 2005; E1 (AFM030).

WORK CAPACITY TEST (WCT) for Wildland Firefighters: This position participates in wildland firefighting activities. Based on the type of work performed, TAKING and PASSING the WCT at the ARDUOUS level is a "condition of employment." The Arduous fitness (Pack) Test consists of a three (3) mile hike, within forty-five (45) minutes, while carrying a forty-five (45) pound pack.

Contact Information: Eric Hawes, North Zone Fuels Specialist, 307-699-1705 eric.hawes@usda.gov

Per diem and travel expenses are covered during the detail.

ABOUT THE FOREST

The Bridger-Teton National Forest (BTNF) is part of the largest intact ecosystem in the lower 48 states. The 3.4 million acres stretch from the southern border of Yellowstone National Park, covering the entire eastern flank of Grand Teton National Park, wrapping around Jackson Hole valley, to the sagebrush prairies of southwest-central Wyoming.

The Greater Yellowstone Ecosystem is a loosely defined area characterized by high elevation coniferous forests, sage/grass steppes, mountain ranges and deep valleys, large expanses of wild lands and three wilderness areas, abundant wildlife, and internationally recognized scenic and natural features.

The Forest includes headwaters of three nationally significant rivers (Yellowstone, Snake and Green). Tributaries to these rivers are considered exceptional in trout habitat and home to native strains of cutthroat trout.

Some of the largest and most diverse populations of mammals in North America exist here. This ecosystem still includes all of the major carnivores, an indication of its ecological completeness. The BTNF includes undisturbed habitat for threatened and endangered species including the grizzly bear. The Forest's wild lands are large and relatively unaltered by human activity, making them valuable for scientific study and determining baseline conditions for comparison elsewhere.

Recreation opportunities and scenic quality are internationally renowned. The BTNF attracts over 2.2 million visitors each year. The three wilderness areas cover over 1.3 million acres; the Bridger, the Teton and the Gros Ventre totaling more than one-third of the BTNF acreage, and containing major migration routes for wildlife. There are 315 miles of designated Wild and Scenic Rivers on the Forest. The Forest offers some of the nation's best opportunities for winter sports including Jackson Hole Mountain Resort, Snow King, and White Pine ski areas. The backcountry landscape contains a multitude of cross-country skiing trails and miles of trails for snowmobiling. Summer recreation contains a trail system of some 3000 miles and a network of scenic roads stretching more than 2500 miles. The Forest also offers unique features such as the scenic and challenging Snake River Canyon, where more than 150 thousand visitors float through its whitewater each year; the Gros Ventre Slide, one of the largest natural landslides in the country; Periodic Springs on Swift Creek near Afton, which is one of the few coldwater geysers in the world; Fremont Lake, the second largest lake in the State of Wyoming, and one of the deepest in the U.S.; Kendall Warm Springs known as the only home for the Kendall Warm Springs Dace; and Gannett Peak (elev. 13,804) the highest point in Wyoming.

The BTNF also has important commodity resources. Scientists believe that there are large reserves of oil and gas trapped beneath the Forest landscape. Approximately 360,000 acres are open to oil and gas leasing.

Pine, spruce and fir have long supported the local logging industry. The Forest offers approximately 10 to 12 million board feet annually, of which about one third is non-commercial firewood, and post and poles for fences. The timber volume continues on a declining trend, reflecting the societal values for wildlife, scenic landscapes, and sense of place.

The BTNF also contains some of the richest grazing lands in Wyoming, where more than 40,000 cattle, 2000 horses and, and 80,000 sheep graze annually.

THE JACKSON RANGER DISTRICT

The Jackson Ranger District covers roughly 695,451 acres that are bounded by Grand Teton National Park, Teton Basin and Palisades Ranger Districts of the Caribou-Targhee; Buffalo, Pinedale, Big Piney, and Greys River Ranger Districts of the Bridger-Teton; the Wind River Ranger District of the Shoshone National Forest; the National Elk Refuge; and private lands. Due in part to the scarcity of private lands, the District and north zone of the Forest manages over 240 outfitter and guide and recreation special use permits, and roughly 230 non-recreation special use permits. This setting combined with being a national destination for tourism make the Jackson District one of the most complex in Region 4. The District has an excellent tenured staff. The District manages the 285,505 acre Gros Ventre Wilderness, whose western boundary is less than ½ mile from the town of Jackson. The District manages 2 ski areas and several developed campgrounds. There is a high volume of recreation use through outfitter guides, several developed campgrounds, and dispersed use. The District is actively addressing a number of Wildland Urban Interface issues through the fire and fuels, and vegetation management programs. The grazing program includes 2 forage reserves and 13 active allotments. The District has an active wildlife program as well. Working relationships with other agencies, local government, and many non-governmental organizations are very good with many productive and diverse partnerships.

THE BLACKROCK RANGER DISTRICT

The scenic 720,000-acre Blackrock Ranger District is bounded by Yellowstone National Park to the north, Grand Teton National Park to the west, the Shoshone National Forest to the east, and the BTNF’s Jackson Ranger District to the south. The District includes only a small amount of private inholdings. The historic Blackrock Ranger Station compound itself is approximately one square mile in size, with numerous housing units, worksites, and warehouses situated within its boundaries.

Central to the District is its large and varied recreation/wilderness program. There is a high volume of recreation use through outfitter guides, several developed campgrounds, and dispersed use. There are several historic guard stations on the District located in the Teton Wilderness area. The most remote spot in the lower 48 states (in terms of distance from roads) is located in the Teton Wilderness.

Other programs on the District include active timber sales, and a large and active whitebark pine management program. Working relationships with other federal and state agencies, Teton County government, and many non-governmental organizations are very good with many partnerships ongoing.

Moran is served by the Teton County School District; there is an excellent elementary school in Moran with K through 5th grades. Grades 6 thru 12 are bused approximately 40 miles to Jackson, WY.

THE COMMUNITY AND DUTY LOCATION

Jackson, Wyoming lies in the Jackson Hole Valley which is approximately sixty miles long by twenty miles wide. This beautiful alpine valley is a magical playground nestled in the shadow of the towering, majestic Teton Mountains on the west and the Gros Ventre Mountains on the east. It is located in the northwestern corner of Wyoming. Jackson lies in Teton County which covers 2,873 square miles. Jackson's elevation is approximately 6,200 feet above sea level.

The alpine climate results in four distinct seasons. During recent years the coldest temperature recorded was -36°F on December 12, 1990 and the warmest recorded was 95°F on June 25, 1988. Snowfall ranges from 88 to 400 inches per year depending on location. Annual rain precipitation averages 15.2 inches.

Jackson is a world renowned resort town with a population of 10,000+ inhabitants. "Something for everyone" is the perfect description for Jackson - tennis, swimming, golfing, shopping, world renowned ski resorts (Snow King, Teton Village, and Targhee), the Grand Teton Music Festival's classical music, and of course, all the great outdoor recreational sports such as hiking, mountain climbing, hunting, fishing, snowmobiling, boating, four wheeling, wildlife viewing, whitewater rafting, bicycling, horseback riding and camping.

Jackson Hole is served by the Teton County School District, Central Wyoming College, and several private and religious pre-schools, kindergartens and elementary schools.

	Number of Schools
--	----------------------

Kindergarten	1
Elementary	6
Middle School	1
High School	1

Teton County employs over 16,495 people with an unemployment rate of 5.7%. There is a high percentage of governmental employment in Teton County. The governmental agencies are represented by the Bridger-Teton National Forest, Grand Teton National Park, Yellowstone National Park, the National Elk Refuge, Wyoming Game and Fish, Town of Jackson and Teton County employees.

Since only 3% of the land in Jackson Hole is privately owned, land and housing is extremely expensive. A three bedroom, standard home on a 1/4-acre lot is commonly priced over \$1,000,000+. A standard two/three bedroom rental cost is around \$2,500-\$3,500 plus per month. There is a 6% State and County tax on goods. Real estate is high, but there is no personal income tax. Forest Service affiliated day care facilities are not available.

That said, there are several affordable housing opportunities in the area for residents to take advantage of:

- The Jackson/Teton County Affordable Housing Department supplies and catalyzes workforce housing by providing development incentives; and using tax revenue, developer fees and exactions. Currently, the Housing Department manages 20 rental units and ensures compliance on another 831 deed restricted units throughout Teton County. For more information on affordable housing in Teton County and the Town of Jackson, please see the 2015 Workforce Housing Action Plan, the 2016 Housing Supply Plan, and/or contact the Housing Department.
- The Jackson Hole Community Housing Trust is a not-for-profit developer that provides ownership and rental opportunities to qualifying households.
- Habitat for Humanity of the Greater Teton Area is a not-for-profit developer that provides ownership opportunities to qualifying households.

Each of the above agencies has a different application and approval process. Visit their websites to learn more.

Real estate is high, but there is no personal income tax.

St. John's Hospital provides good health care services in the Jackson Hole area. Comprehensive care includes 24-hour emergency services, general surgery, professional home care, an outpatient Surgical Center, sports medicine, wellness programs and the St. John's Living Center long-term care facility. Other medical services include general internists, obstetricians, gynecologists, family physicians, radiologists, orthopedists, physical therapists, psychiatrists, psychologists, licensed social workers, ophthalmologists, a dermatologist, dentists, orthodontists, chiropractors, and EMT services.

There is a wide range of religious services available in area.

The Town of Jackson provides a 21 active-officer Police Department, 35 sworn County Sheriff Deputies, and 37 fire fighting trucks and water support equipment in the Fire Department. Other utilities that are available are: electricity, natural gas, water, sewer, trash removal, recycling, and telephone communications.

Transportation into and out of Jackson is available via air service and auto. Three carriers provide year around air service. United Express services Jackson from Denver International Airport. Sky West/Delta Airlines serves Jackson from its hub in Salt Lake City. During the summer months and the ski season, Jackson receives additional service from United Airlines and American Airlines providing non-stop service from markets such as Denver, Chicago and Dallas. Delta Airlines serves Jackson during the ski season from Salt Lake City. Car rentals and taxi service are available at several locations around town including the airport. Public and private bus service is provided between the airport, Jackson, and Teton Village.

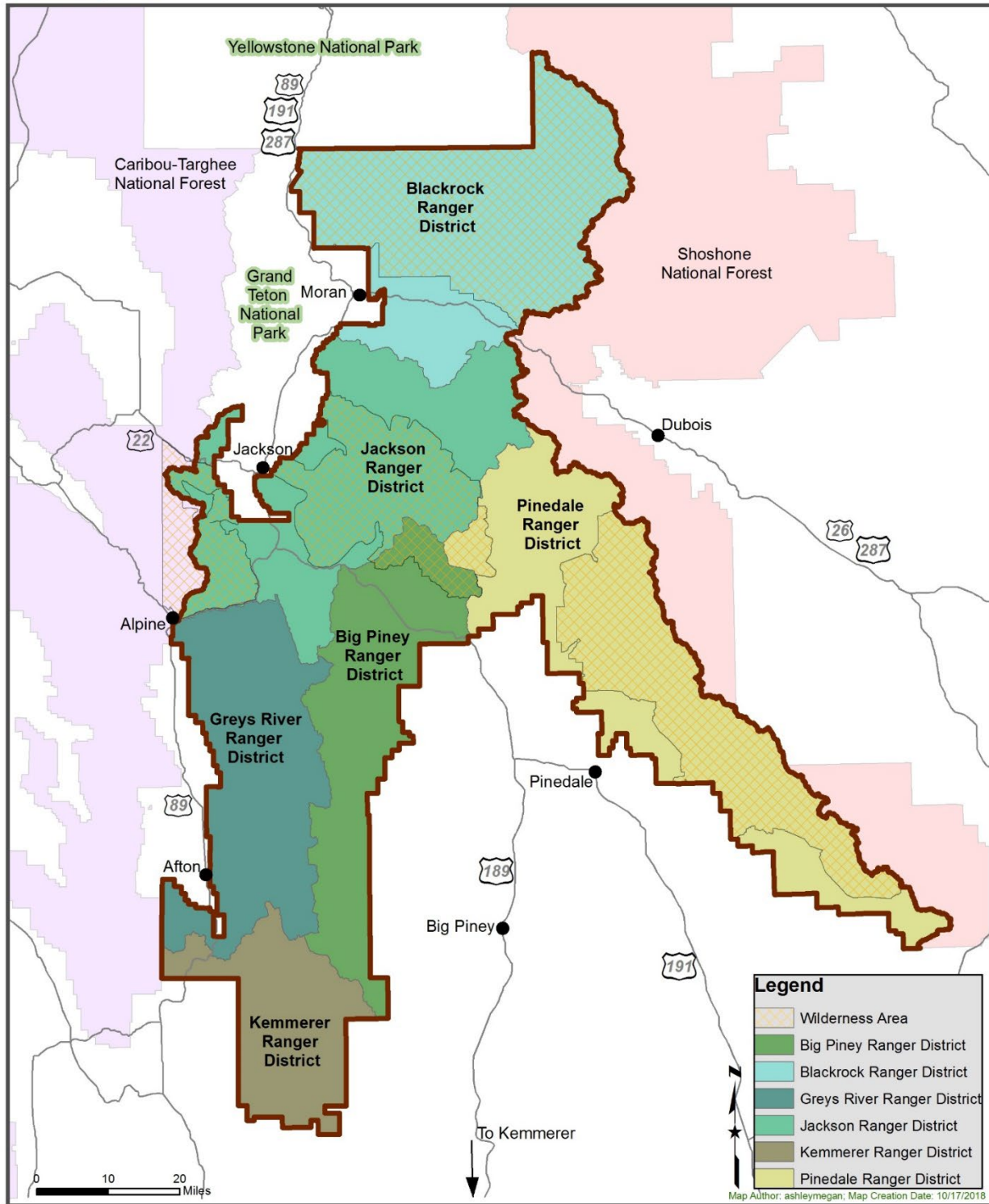
Driving distances from Jackson are listed below:

To:	Miles
Kemmerer, Wyoming	155

Big Piney, Wyoming	90
Afton, Wyoming	70
Pinedale, Wyoming	77
Buffalo Ranger District	43
Ogden, Utah (Regional Office)	243
Billings, Montana	316
Casper, Wyoming	284
Denver, Colorado	512
Idaho Falls, Idaho	95
Salt Lake City, Utah	280
South entrance Yellowstone National Park	59
South entrance Grand Teton National Park	13

For more information on our community, please contact the Jackson Hole Chamber of Commerce at (307) 733-3316 or on the web at <https://www.jacksonholechamber.com/>.

For more information about this position, please contact Eric Hawes, North Zone Fuels Specialist at 307-699-1705 or by email at eric.hawes@usda.gov



The map shows the Jackson and Blackrock Ranger Districts.

THANK YOU FOR YOUR INTEREST IN OUR POSITION ON THE BRIDGER-TETON NF

OUTREACH RESPONSE FORM

**GW-0462- 6/7 District/Zone Fuels Technician
NTE 120 Detail/Temp Promotion Opportunity**

U.S. Forest Service

Please return your completed response form to Eric Hawes, eric.hawes@usda.gov

Your Name: _____ Email: _____

Mailing Address: _____

Telephone Number _____

AGENCY EMPLOYED WITH: _____ USFS _____ NPS

TYPE OF APPOINTMENT: _____ PERMANENT _____ TEMPORARY _____ TERM

CURRENT REGION/FOREST/DISTRICT: _____

CURRENT SERIES AND GRADE: _____

CURRENT POSITION TITLE: _____

CURRENT RED CARD QUALIFICATIONS _____

Please attach resume with references and current IQCS Master Record.

Thank you for your interest!

JOB RELATED EXPERIENCE