

OUTREACH NOTICE



**USDA FOREST SERVICE
Bridger-Teton National Forest
GS-0401-9 Fuels Specialist**

or

GS-0462-8/9 Fuels AFMO

3 Total Positions. 1 per Zone (North, East, West) on BTNF

Permanent Opportunity

Vacancy Announcement will be open from Sept 19th – Sept 29th, 2022

These positions are being filled during the Non-Centralized Phase 1 Hiring Event

ABOUT THE POSITION

The Bridger-Teton National Forest (BTNF) is seeking to hire either a full time (PFT) GS-0401-9 Fuels Specialist **or** a full time (PFT) GS-0462-8/9 Fuels AFMO for **each of the 3 Zones on the Bridger-Teton National Forest**. Duty stations will be listed as Jackson and Moran, WY (North Zone), Pinedale and Big Piney, WY (East Zone) as well as Afton and Kemmerer, WY (West Zone). PDs for these positions are FS0273 and FS0934/FS0867.

Bridger-Teton National Forest fire management is a fully integrated, interagency program with wildland fire operations/management, fuels management and prevention. The Fuels Specialist/Fuels AFMO will be expected to be an active participant in all areas of the BTNF and Teton Interagency Fire program. This position will be supervised by the Zone Fuels Specialist and duties include hazardous fuels planning and implementation, including prescribed burning, mechanical vegetation treatments and effects monitoring of hazardous fuel reduction projects. This position will work closely with other resource areas such as timber, range and wildlife implementing the Forest 10-year Vegetation Plan.

For more information on Teton Interagency Fire, visit www.tetonfires.com

MAJOR DUTIES

Assists in planning, implementing and coordinating all aspects of the prescribed fire and fuels management program. Provides assistance in program direction, short- and long-range planning; budgeting; and, managing the wildland fire, fuels management, and prescribed fire programs. Formulates and develops plans, budgets, and schedules for well-precedented fire management operations

Develops and recommends plans to perform a wide variety of limited operational projects, such as evaluating existing or developing new regional or forest-wide plans for fuels management, fire prevention, and fire protection programs. Applicable methods and techniques contain gaps, deviations, or differences that must be critically examined prior to conducting the full project. Uses input from the interdisciplinary team, annual objectives, and management direction to develop and recommend schedule of treatment.

Plans, conducts surveys and evaluates data to develop prescriptions for prescribed fire and wildland fire monitoring.

Implements and administers technical aspects of the prescribed fire/fuels plan, ensuring that preparation, ignition, holding, mop-up, and rehabilitation are completed to the standards specified and in accordance with regulations, policies, and guidelines. Monitors fire behavior, evaluates fire effects, identifies potential problems and makes recommendations.

Conducts field reconnaissance of prescribed fire/fuels treatment units, summarizes field findings and makes recommendations on appropriate prescriptive criteria for meeting program objectives. Responsible for record keeping associated with burn planning, fire occurrence reporting, and weather.

These positions are categorized as Fuels Specialist (DFAFM-P) position or a Fuels AFMO (DFAFM-T) that is subject to the Forest Service Fire Program Management (FS-FPM) Standard and Guide, as designated by the W.O. Fire and Aviation Management. The FS-FPM minimum qualification standards (MQS) for this position must be met prior to entrance into the position as a condition of hire. Refer to the Forest Service FS-FPM Standard Position Description Crosswalk for a full description of the MQS. <https://www.fs.usda.gov/sites/default/files/2021-12/IFPM-FS-FPM-Crosswalk.pdf>

Minimum Qualifications for District Fuels Specialist (DFAFM-P) and Fuels AFMO (DFAFM-T): RXB2 (Currency required) -and- ENGB or CRWB or HMGB or FELB or HEQB (Currency required).

FIREFIGHTER RETIREMENT COVERAGE: This is a covered secondary position description under the provisions of 5USC 8336 (c) and 8412 (d). Ninety (90) days of experience as a primary/rigorous wildland firefighter or equivalent experience outside federal employment as a basic qualification requirement for this position. This position has been approved for secondary firefighter coverage under CSRS and FERS by USDA on June 28, 2005; E1 (AFM030).

WORK CAPACITY TEST (WCT) for Wildland Firefighters: This position participates in wildland firefighting activities. Based on the type of work performed, TAKING and PASSING the WCT at the ARDUOUS level is a "condition of employment." The Arduous fitness (Pack) Test consists of a three (3) mile hike, within forty-five (45) minutes, while carrying a forty-five (45) pound pack.

Contact Information: **Dave Wilkins, North Zone FMO, 307-739-5418, david.wilkins@usda.gov**
Paul Swenson, East Zone Fuels Specialist, 307-231-4893, paul.swenson@usda.gov
Timothy Sherwin, West Zone Fuels Specialist, 307-828-5112, timothy.sherwin@usda.gov

Government Housing may be available, depending on duty station and local availability at time of hire.

About the Forest:

The 3.4-million-acre Bridger-Teton National Forest is the second largest National Forest in the United States outside Alaska. It lies in Western Wyoming, adjoining Yellowstone, and Grand Teton National Parks and within the Greater Yellowstone Ecosystem, the largest remaining area of undeveloped land in the 48 conterminous United States. It is noted for its scenery and natural features, large and diverse wildlife populations, and habitat for threatened and endangered species. There are six districts on the Forest: Kemmerer, Afton, Big Piney, Pinedale, Jackson and Blackrock. The Supervisor's Office is in Jackson. See below for description of duty stations.

About the Duty Stations:

Kemmerer:

The town of Kemmerer is a small community located high in the rolling hills of Western Wyoming in the Green River Basin along the Hams Fork River. The elevation is 6,927 feet with a population of approximately 3,126. The Kemmerer area offers an abundance of fishing, hunting, hiking, wildlife watching, and snowmobiling. Golfers also enjoy a challenging nine-hole golf course set near the Hams Fork River. Several benefit tournaments are conducted throughout the summer. Kemmerer offers four private quarries where you can dig your own fossils, and is the home of Fossil Butte National Monument, an 8,198 acre natural area that was established in 1972 and many historic cut-off trails of the Oregon, Mormon and California Trails.

Afton:

The Greys River Ranger Station is located in Afton, which is the largest town in Star Valley. Afton has a population of about 2,000. Star Valley is 60 miles long by 5 miles wide, located between the Idaho- Wyoming border to the west and the Salt River Range on the east; town elevation is 6,134 feet. The town boasts the largest Elkhorn Arch in the world spanning 75 feet and containing over 3000 antlers donated by the Wyoming Game and Fish Department. Nearby Periodic Spring, which is an extremely rare cyclic stream or cold-water 'geyser', is a national forest visitor attraction, and forest access begins just east of town. Groceries and entertainment options are within walking or biking distance.

Big Piney:

Big Piney is a small community of about 800 people and is located on Highway 189, 45 miles southwest of Pinedale and 90 miles south of Jackson, Wyoming. Big Piney is a rural community with an economic focus on ranching and oil and gas production. Although small, the community offers a multitude of benefits with a great library, fitness center, bowling alley and movie theater. Located just 30 minutes east of the Wyoming Range and 10 minutes from the Green River the fishing, hiking, hunting and all other outdoor opportunities are abundant.

Pinedale:

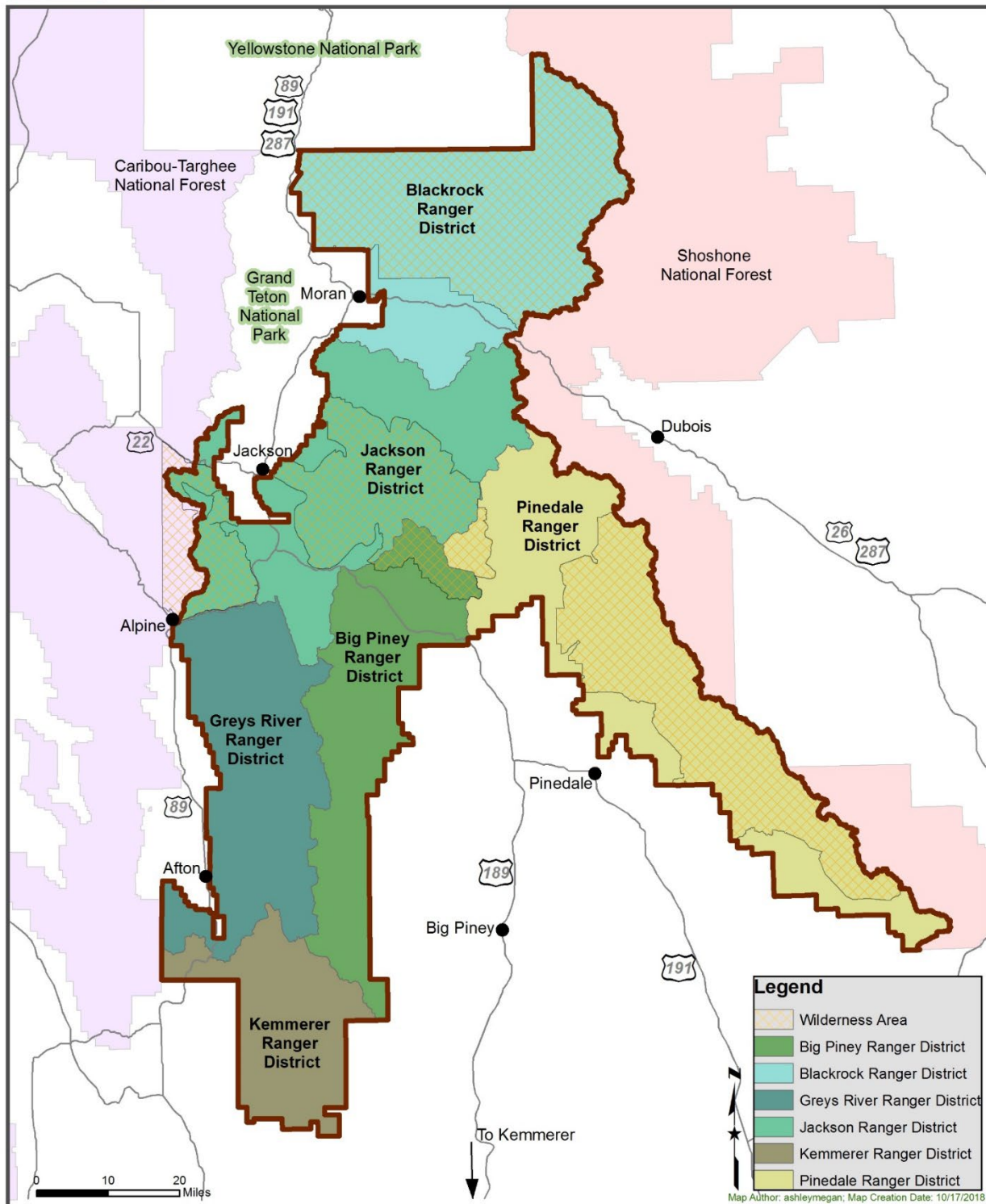
The Town of Pinedale sits at an elevation of 7,200 feet at the base of the Wind River Range, providing amazing views of the Continental Divide. The Pinedale Ranger District, located in Pinedale WY, is 80 miles southeast of Jackson, WY and 100 miles North of Rock Springs WY. At 830,000 acres in size, the Pinedale Ranger District offers a wide range of recreation settings and opportunities for both locals and visitors, including the entire 428,169-acre Bridger Wilderness. With over 2,300 lakes, 48 peaks above 12,500 feet (including Gannet Peak, the highest peak in Wyoming), and 500 miles of trails, the Bridger Wilderness offers internationally recognized backpacking, fishing, climbing, hunting, and horseback riding opportunities. Outside of the Wilderness you can find glacial-carved lakes providing excellent opportunities for developed and dispersed camping, fishing, boating, hunting, horseback riding, and motorized recreation.

Jackson:

The Town of Jackson is the county seat of Teton County and the only incorporated municipality in the county. "Jackson Hole" as it's often called, refers to the whole area which is a 50 mile long valley surrounded by high mountains. Jackson is a popular tourist destination because of its proximity to Yellowstone & Grand Teton National Parks, unmatched scenic beauty, world-class skiing, and western character. For tourism information, including listing of lodging, restaurants, and shopping, please contact the Jackson Hole Chamber of Commerce at 307-733-3316 or on the web at www.jacksonholechamber.com. This spectacular valley in the mountains offers residents and visitors alike an unparalleled array of outdoor activities for year-round enjoyment. From world-class skiing, snowmobiling, backcountry touring and dog sledding in the winter to hiking, rafting, fly fishing, paragliding, mountain biking and rock climbing in the summer.

Moran:

The Blackrock Ranger Station, formerly Buffalo, is located 40 miles North of Jackson and 8 miles east of Moran, Wyoming. The District manages approximately 750,000 acres of National Forest System lands, 585,486 acres of which are within the Teton Wilderness. The area is extremely beautiful with the Teton Range in full view from most of the District. There is an abundance of wildlife such as moose, elk, mule deer, grizzly bear, black bear, and trumpeter swan. The closest towns to Blackrock are Jackson and Dubois, each approximately 40 miles away. With a population of approximately 8000, Jackson is a full service community with shopping, hospital, movie theaters and an airport. Dubois is much smaller, with a population of 2,000, and has basic services. The nearest major city is Idaho Falls, (2-hour drive) with a population of 150,000.



The map shows the various Ranger Districts on the BTNF.

THANK YOU FOR YOUR INTEREST IN OUR POSITIONS ON THE BRIDGER-TETON NF

OUTREACH RESPONSE FORM

**GS-0401-9 Fuels Specialist
or
GS-0462-8/9 Fuels AFMO
Permanent Opportunity**

U.S. Forest Service

Based on interest at Duty Location, Please return your completed response form to:

East Zone (Pinedale/Big Piney): Paul Swenson, East Zone Fuels Specialist, 307-231-4893, paul.swenson@usda.gov

North Zone (Jackson/Moran): David Wilkins, North Zone FMO, 307-739-5418, david.wilkins@usda.gov

West Zone (Afton/Kemmerer): Timothy Sherwin, West Zone Fuels Specialist, 307-828-5112

timothy.sherwin@usda.gov

Your Name: _____ Email: _____

Mailing Address: _____

Telephone Number _____

POSITION YOU ARE INTERESTED IN: _____ GS 9 FUELS SPECIALIST _____ GS 8/9 FUELS AFMO

AGENCY EMPLOYED WITH: _____

TYPE OF APPOINTMENT: _____PERMANENT_TEMPORARY_TERM

CURRENT REGION/FOREST/DISTRICT: _____

CURRENT SERIES AND GRADE: _____

CURRENT POSITION TITLE: _____

CURRENT RED CARD QUALIFICATIONS _____

Enter job related experience on next page or attach resume with references.

Thank you for your interest in our Vacancy!

JOB RELATED EXPERIENCE