

OUTREACH NOTICE



USDA FOREST SERVICE Bridger-Teton National Forest

East Zone: Pinedale and Big Piney Ranger Districts

This position will be filled during the Non-Centralized Phase 2 R4 Hiring Event. Vacancy Announcement will be open from December 5th - December 14th, 2023.

Announcement: 24-FIRE-P2GVA-DFUELS-911DH

ABOUT THE POSITION

The Bridger-Teton National Forest (BTNF) is seeking a permanent full time GS-0401- 9/11 Zone Fuels Specialist for the East Zone BTNF (Pinedale and Big Piney Ranger Districts). PDs for the position are FC5424/FC0274. Duty station may be either Pinedale, WY or Big Piney, WY.

Bridger-Teton National Forest fire management is a fully integrated, Interagency program with wildland fire operations/management, fuels management and prevention. The zone fuels specialist will be expected to be an active participant in all areas of the BTNF fire program. This position provides oversight for and planning and implementation of the zone fuels program. The incumbent is responsible for hazardous fuels planning and implementation including NEPA, prescribed burning, mechanical vegetation treatments, effects monitoring of hazardous fuel reduction projects. For more information on Teton Interagency Fire, visit www.tetonfires.com

Duties and Responsibilities include and are not limited to:

- Fuels, Prescribed burning and smoke management for the Zone.
- Provide direct supervision to a Fuels AFMO(GS8/9)/Fuels Technician (GS8) position and a Fuels Tech (GS6/7)
- NEPA ID Team leader on Zone Fuels Projects and team member on other resource projects
- Coordinating with multi-disciplinary and interagency partners/cooperators
- Leader in the wildland fire for resource benefit and assists in zone fire operations (IC, Zone Duty Officer WFDSS etc.)
- Prepare grants to pursue outside fuels funding.
- May serve as a Technical Monitor or COR.
- Skilled with GIS, spatial and tabular fuels reporting (FACTs)

This position is categorized as District/Zone Fuels Specialist (DFPFM) position that is subject to the Forest Service Fire Program Management (FS-FPM) Standard and Guide, as designated by the W.O. Fire and Aviation Management. The FS-FPM minimum qualification standards (MQS) for this position must be met prior to entrance into the position as a condition of hire. Refer to the Forest Service FS-FPM Standard Position Description Crosswalk for a full description of the MQS. <https://www.fs.usda.gov/sites/default/files/2021-12/IFPM-FS-FPM-Crosswalk.pdf>

Minimum Qualifications Pathway 1: RXB2 –and- ICT4 or TFLD (Currency required). Pathway 2: RXB2 -and- HEBM (Currency required)

FIREFIGHTER RETIREMENT COVERAGE: This is a covered secondary position description under the provisions of 5USC 8336 (c) and 8412 (d). Ninety (90) days of experience as a primary/rigorous wildland firefighter or equivalent experience outside federal employment as a basic qualification requirement for this position. This position has been approved for secondary firefighter coverage under CSRS and FERS by USDA on June 28, 2005; E1 (AFM030).

WORK CAPACITY TEST (WCT) for Wildland Firefighters: This position participates in wildland firefighting activities. Based on the type of work performed, TAKING and PASSING the WCT at the ARDUOUS level is a "condition of employment." The Arduous fitness (Pack) Test consists of a three (3) mile hike, within forty-five (45) minutes, while carrying a forty-five (45) pound pack.

Contact Information: Kate Olsen, Pinedale District Ranger, 307-690-9055, kate.h.olsen@usda.gov

Housing may be available, depending on duty location and available housing inventory at time of job offer.

ABOUT THE FOREST

The Bridger-Teton National Forest (BTNF) is part of the largest intact ecosystem in the lower 48 states. The 3.4 million acres stretch from the southern border of Yellowstone National Park, covering the entire eastern flank of Grand Teton National Park, wrapping around Jackson Hole valley, to the sagebrush prairies of southwest-central Wyoming.

The Greater Yellowstone Ecosystem is a loosely defined area characterized by high elevation coniferous forests, sage/grass steppes, mountain ranges and deep valleys, large expanses of wild lands and three wilderness areas, abundant wildlife, and internationally recognized scenic and natural features.

The Forest includes headwaters of three nationally significant rivers (Yellowstone, Snake and Green). Tributaries to these rivers are considered exceptional in trout habitat and home to native strains of cutthroat trout.

Some of the largest and most diverse populations of mammals in North America exist here. This ecosystem still includes all of the major carnivores, an indication of its ecological completeness. The BTNF includes undisturbed habitat for threatened and endangered species including the grizzly bear. The Forest's wild lands are large and relatively unaltered by human activity, making them valuable for scientific study and determining baseline conditions for comparison elsewhere.

Recreation opportunities and scenic quality are internationally renowned. The BTNF attracts over 2.2 million visitors each year. The three wilderness areas cover over 1.3 million acres; the Bridger, the Teton and the Gros Ventre totaling more than one-third of the BTNF acreage, and containing major migration routes for wildlife. There are 315 miles of designated Wild and Scenic Rivers on the Forest. The Forest offers some of the nation's best opportunities for winter sports including Jackson Hole Mountain Resort, Snow King, and White Pine ski areas. The backcountry landscape contains a multitude of cross-country skiing trails and miles of trails for snowmobiling. Summer recreation contains a trail system of some 3000 miles and a network of scenic roads stretching more than 2500 miles. The Forest also offers unique features such as the scenic and challenging Snake River Canyon, where more than 150 thousand visitors float through its whitewater each year; the Gros Ventre Slide, one of the largest natural landslides in the country; Periodic Springs on Swift Creek near Afton, which is one of the few coldwater geysers in the world; Fremont Lake, the second largest lake in the State of Wyoming, and one of the deepest in the U.S.; Kendall Warm Springs known as the only home for the Kendall Warm Springs Dace; and Gannett Peak (elev. 13,804) the highest point in Wyoming.

The BTNF also has important commodity resources. Scientists believe that there are large reserves of oil and gas trapped beneath the Forest landscape. Approximately 360,000 acres are open to oil and gas leasing.

Pine, spruce and fir have long supported the local logging industry. The Forest offers approximately 10 to 12 million board feet annually, of which about one third is non-commercial firewood, and post and poles for fences. The timber volume continues on a declining trend, reflecting the societal values for wildlife, scenic landscapes, and sense of place.

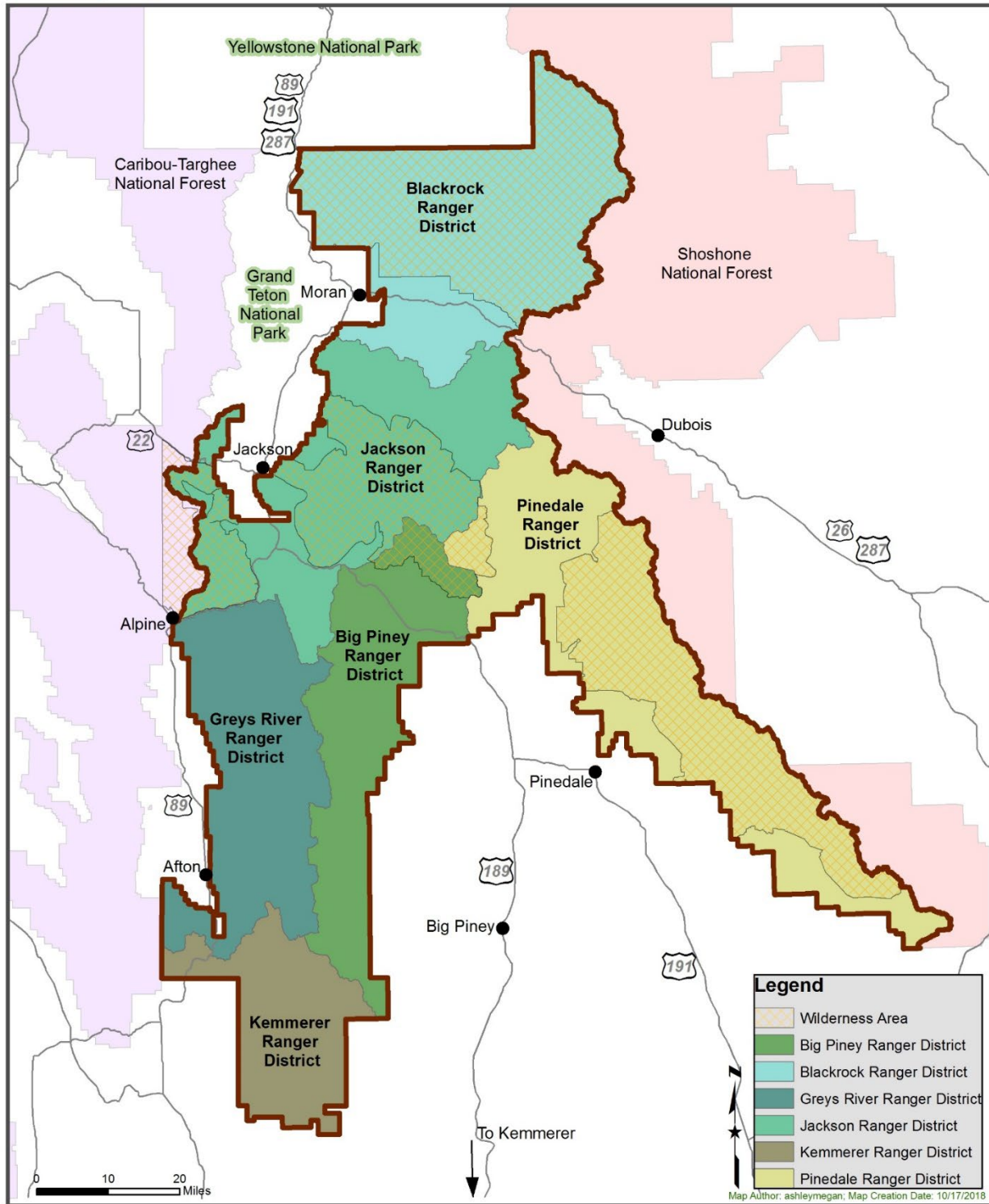
The BTNF also contains some of the richest grazing lands in Wyoming, where more than 40,000 cattle, 2000 horses and, and 80,000 sheep graze annually.

Big Piney:

Big Piney is a small community of about 800 people and is located on Highway 189, 45 miles southwest of Pinedale and 90 miles south of Jackson, Wyoming. Big Piney is a rural community with an economic focus on ranching and oil and gas production. Although small, the community offers a multitude of benefits with a great library, fitness center, bowling alley and movie theater. Located just 30 minutes east of the Wyoming Range and 10 minutes from the Green River the fishing, hiking, hunting and all other outdoor opportunities are abundant.

Pinedale:

The Town of Pinedale sits at an elevation of 7,200 feet at the base of the Wind River Range, providing amazing views of the Continental Divide. The Pinedale Ranger District, located in Pinedale WY, is 80 miles southeast of Jackson, WY and 100 miles North of Rock Springs WY. At 830,000 acres in size, the Pinedale Ranger District offers a wide range of recreation settings and opportunities for both locals and visitors, including the entire 428,169-acre Bridger Wilderness. With over 2,300 lakes, 48 peaks above 12,500 feet (including Gannet Peak, the highest peak in Wyoming), and 500 miles of trails, the Bridger Wilderness offers internationally recognized backpacking, fishing, climbing, hunting, and horseback riding opportunities. Outside of the Wilderness you can find glacial-carved lakes providing excellent opportunities for developed and dispersed camping, fishing, boating, hunting, horseback riding, and motorized recreation.



The map shows the Pinedale and Big Piney Ranger Districts.

THANK YOU FOR YOUR INTEREST IN OUR POSITION ON THE BRIDGER-TETON NF

OUTREACH RESPONSE FORM

**GS-0401-9/11 Zone Fuels Specialist
Permanent Opportunity**

U.S. Forest Service

Please return your completed response form to Kate Olsen, Pinedale District Ranger

kate.h.olsen@usda.gov

Your Name: _____ Email: _____

Mailing Address: _____

Telephone Number _____

AGENCY EMPLOYED WITH: _____ USFS _____ NPS

TYPE OF APPOINTMENT: _____ PERMANENT _____ TEMPORARY _____ TERM

CURRENT REGION/FOREST/DISTRICT: _____

CURRENT SERIES AND GRADE: _____

CURRENT POSITION TITLE: _____

CURRENT RED CARD QUALIFICATIONS _____

Please attach resume with references and current IQCS Master Record.

Thank you for your interest!

JOB RELATED EXPERIENCE