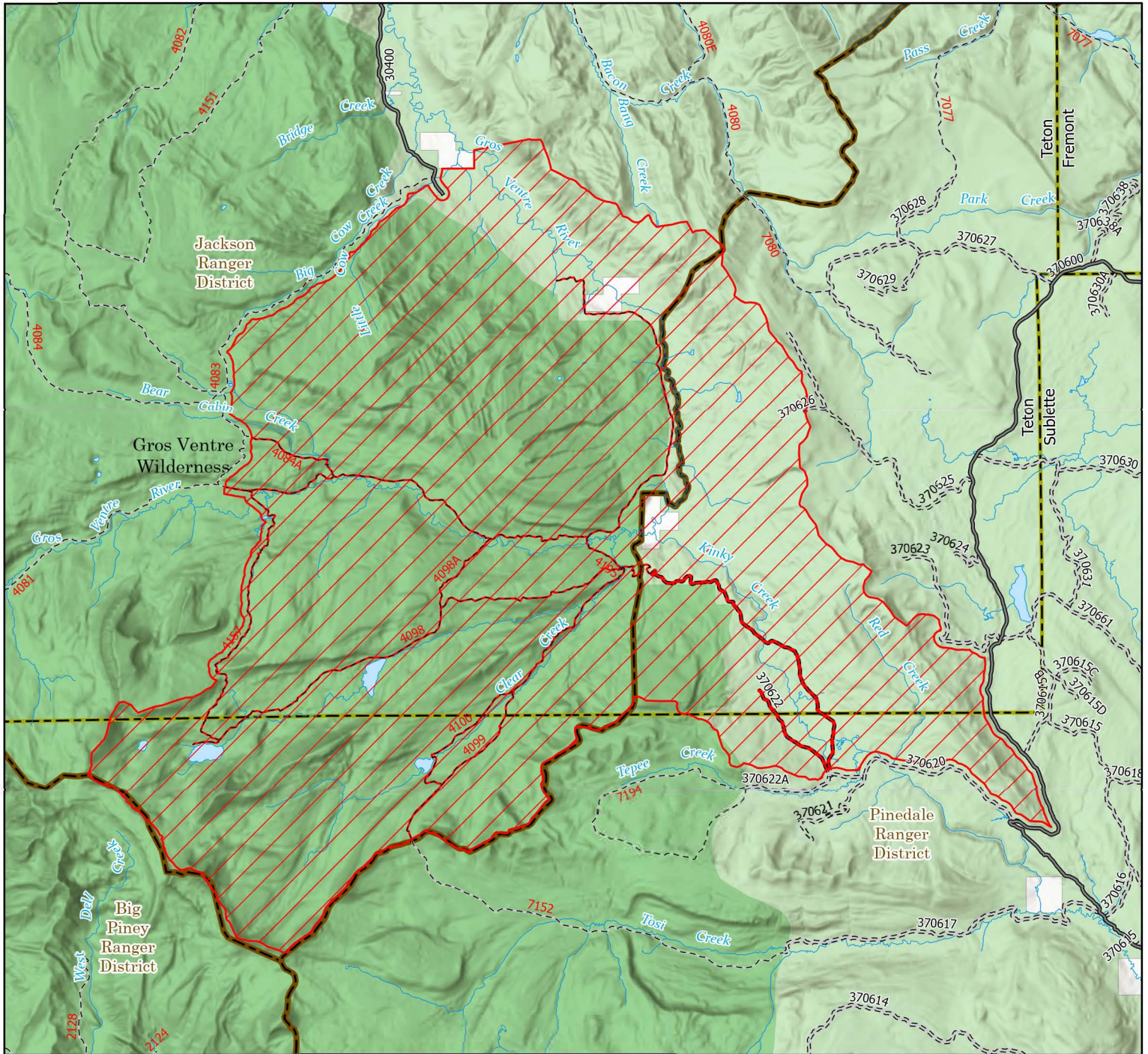




Kinky Creek Fire Area and Road Closure - Order #: 04-03-26-301

Bridger-Teton National Forest, Jackson and Pinedale Ranger Districts



Legend

- | | |
|--------------------------------------|-------------------------------|
| Described Area | Bridger-Teton Forest Boundary |
| Closed USFS Roads | Ranger District Boundary |
| Closed Trails | County Boundary |
| USFS Roads (High Clearance Vehicles) | Wilderness |
| USFS Roads (Passenger Cars) | USFS |
| Forest Trails | Private |



NAD 1983
UTM Zone
12N

