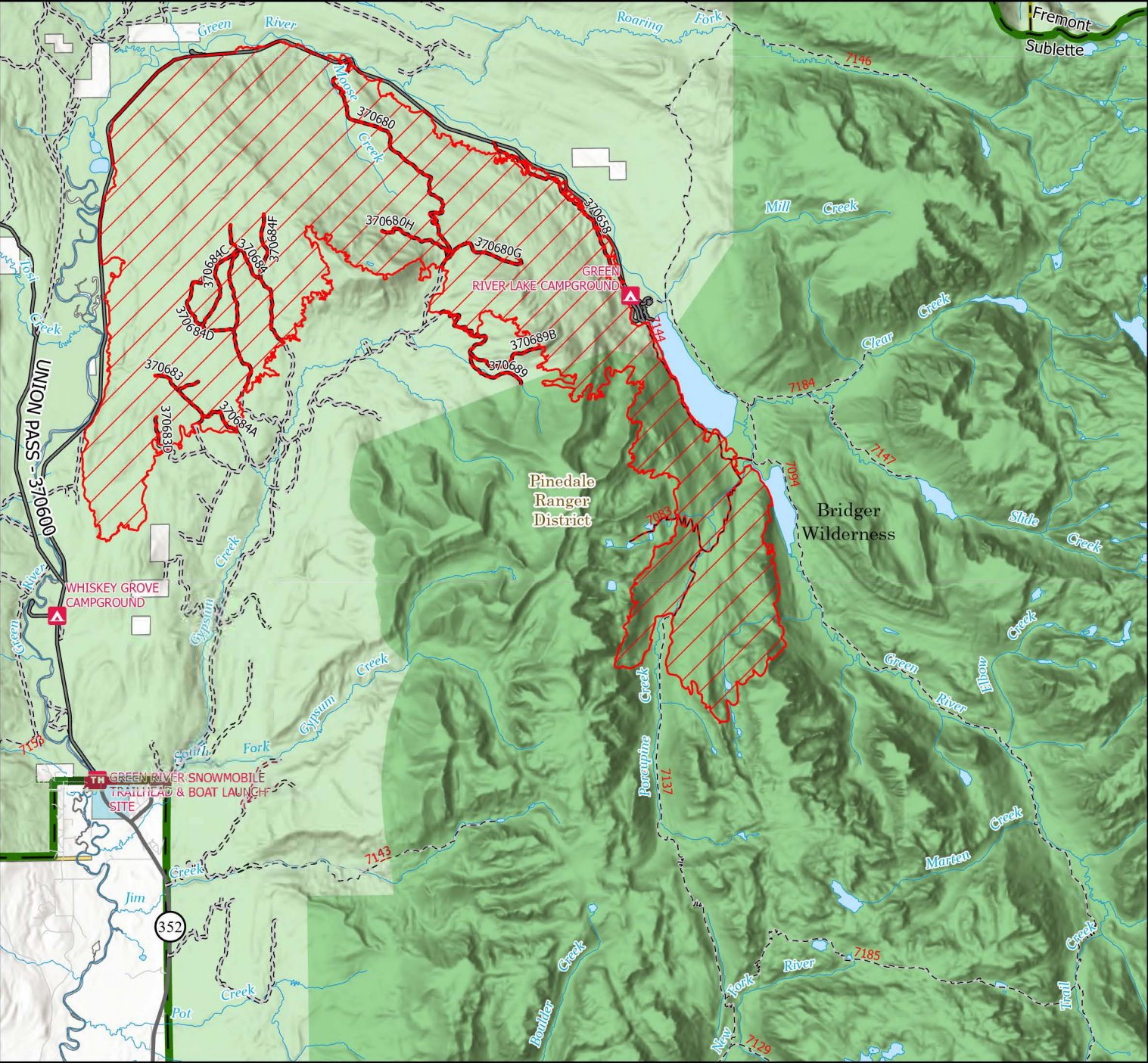




Dollar Lake Fire Area, Road and Trail Closure - Order #: 04-03-25-316

Brigder-Teton National Forest, Pinedale Ranger District



Legend

Described Area	Bridge-Teton Forest Boundary
Closed USFS Roads (High Clearance Vehicles)	Ranger District Boundary
Closed Trails	County Boundary
CAMPGROUND	Wilderness and WSA
TRAILHEAD	USFS
USFS Roads (High Clearance Vehicles)	BLM
USFS Roads (Passenger Cars)	State
Forest Trails	Private

NAD 1983
UTM Zone
12N