

110°40'W

110°38'W

110°35'W

43°23'N

43°23'N

43°20'N

43°20'N

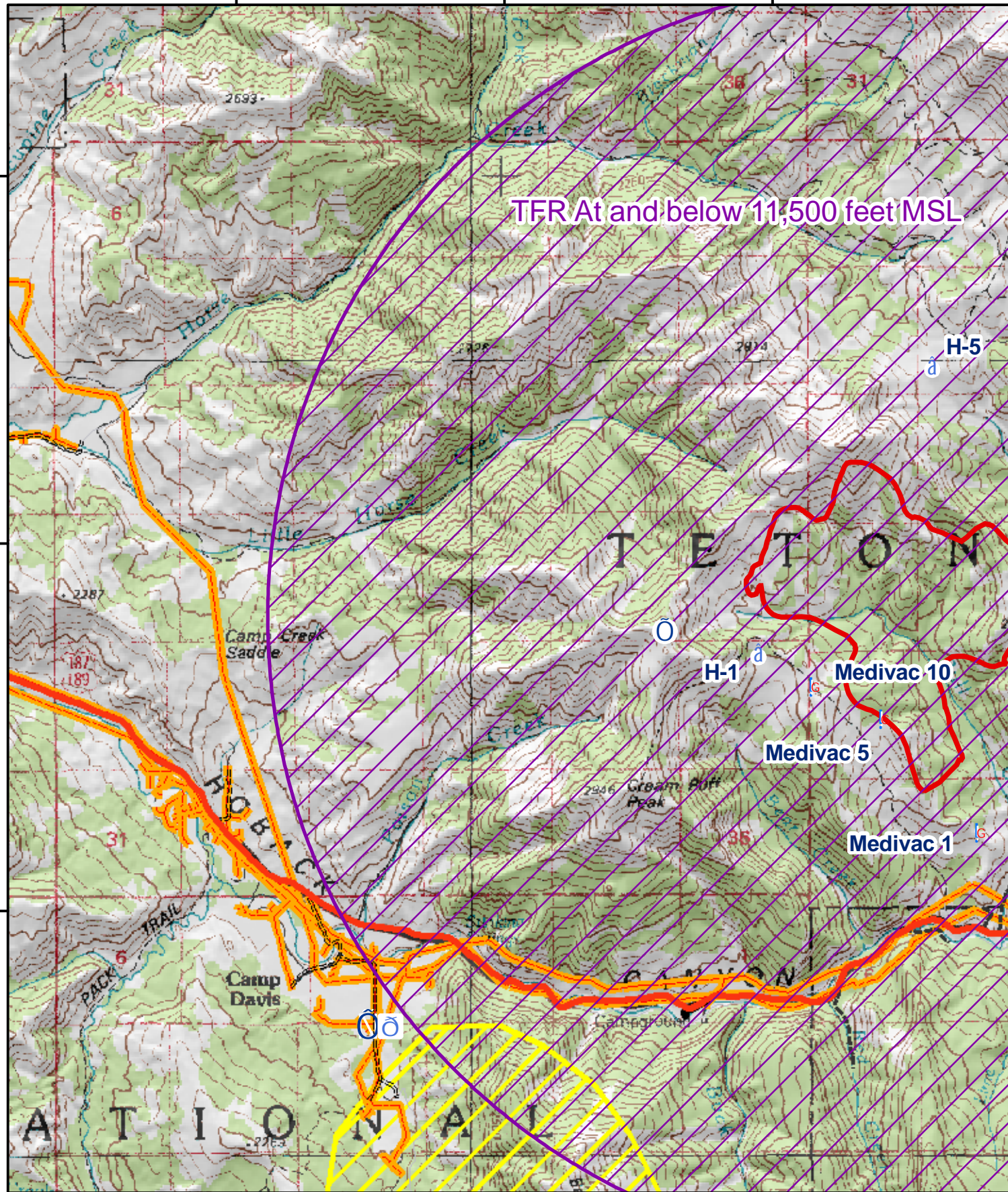
43°18'N

43°18'N

110°40'W

110°38'W

110°35'W



Div A / West Side  
Bull Fire Aerial Hazard Map

WY-BTF-0022  
August 2, 2010

**Not to be used for navigation!**  
For current aerial hazard information, consult the FAA.  
This map may not represent all aerial hazards.

	Helibase		ICP		Bridger-Teton National Forest Roads		Electric Transmission Lines
	Helispot		Repeater		1 - BASIC CUSTODIAL CARE (CLOSED)		Paraglider / Glider Operational Areas
	MediVac Site		Dip Sites		2 - HIGH CLEARANCE VEHICLES		
	RAWS		TFR		3 - SUITABLE FOR PASSENGER CARS		
			Fire Perimeter August 2, 2010		4 - MODERATE DEGREE OF USER COMFORT		
					5 - HIGH DEGREE OF USER COMFORT		

