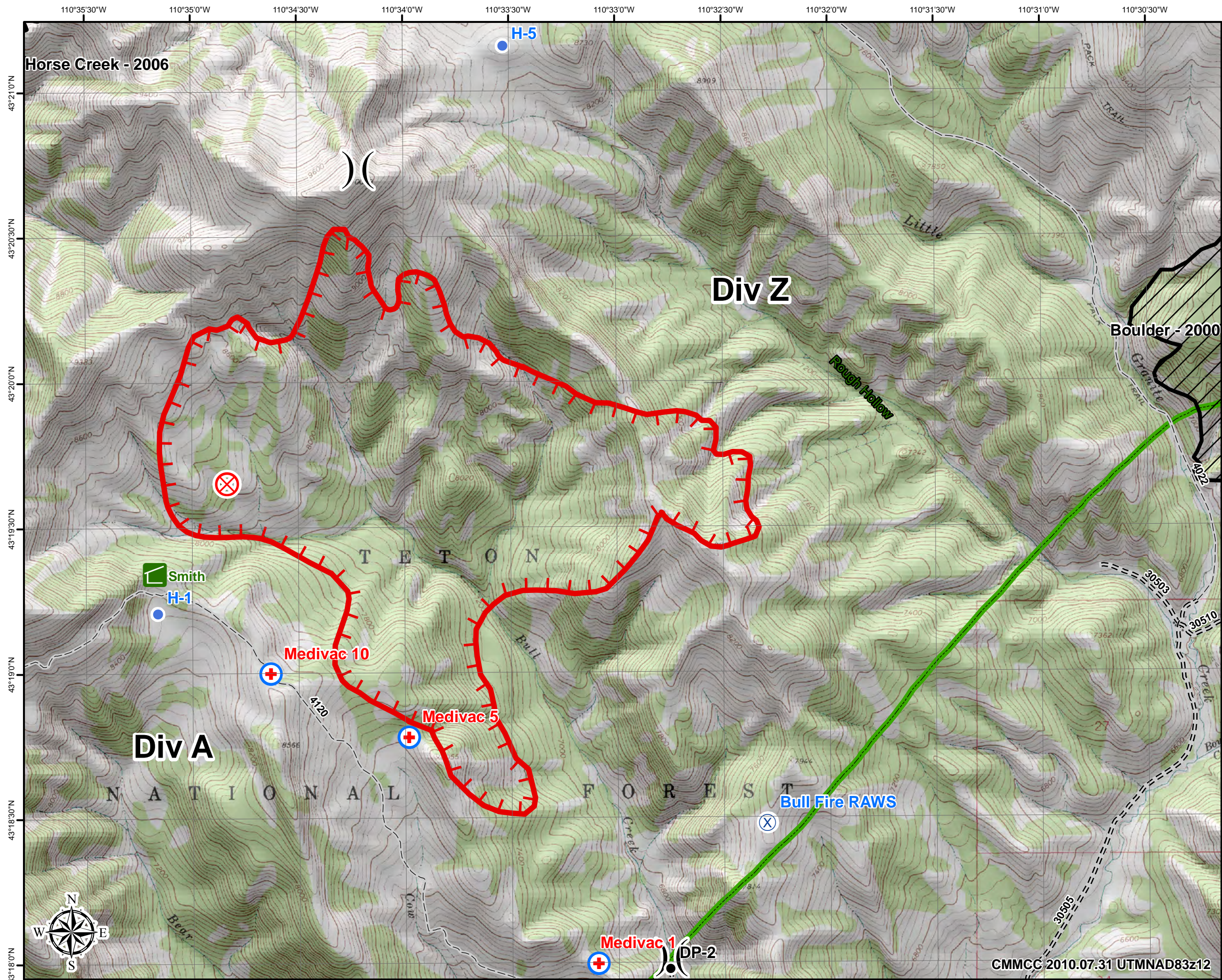


Bull Fire IAP Map

WY-BTF-000022
Operational Period:
08/01/2010 0600-1800 hrs



-)) Division Breaks
- DropPoint
- ⊗ Fire Origin: 7/21/2010
- Helispot
- ⊕ MediVac Site
- ⊗ RAWS
- Ⓡ Repeater
- ⊗ Fire Perimeter 7/31/2010 1900:1462 acres
- ⊗ Underground Mine
- - - LVE powerline on BTF
- ⊗ Wilderness area boundaries
- Major US and State Roads
- BTF Roads
- BTF trails



CMMCG 2010.07.31 UTMNAD83z12

1:24,000 At 11x17