

Wolf Wildfire Information



LWG_2014



7-27-2014 Current Fire Information

Location– Palisades Wilderness Study Area

Administered by the Jackson Ranger District. BTNF

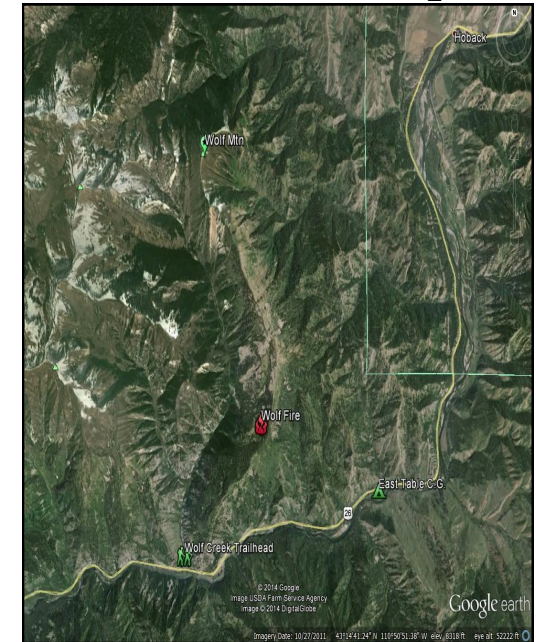
43.93.19"X 110.51.20"

Fire Size –11 acres to include spot fires.

Fuels - aspen, mixed conifer and subalpine Fir.

Fire Behavior - primarily creeping and smoldering.

**Smoke may be visible from the
Snake River Corridor.**



This lightning caused fire has moderate spread potential as it burns within the Palisades Wilderness Study Area. The fire is located on the upper slope of the ridgeline between Wolf and Station Creeks, approximately 1.5 miles north of Highway 26/89 in the Snake River Canyon. No trail or area closures in the area of the fire.

Fire managers will allow the fire to fulfill its natural place on the forest landscape while considering for public and firefighter safety as a priority. Several natural barriers such as open meadows, talus fields, old fire scars and stands of deciduous vegetation in the area will help to “corral” the fire. This break in fuel loading will force the fire to change in behavior and create a mosaic pattern or age class diversity in vegetation on the landscape.

Please use caution if you are traveling in the area of the Wolf Fire , know what weather is predicted during your visit , where the fire is and your best areas for egress.

For more wildfire information visit [www. Tetonfires.com](http://www.Tetonfires.com) or call 307-739-5424

To report a wildfire, please call Teton Interagency Fire at 307-739-3630

