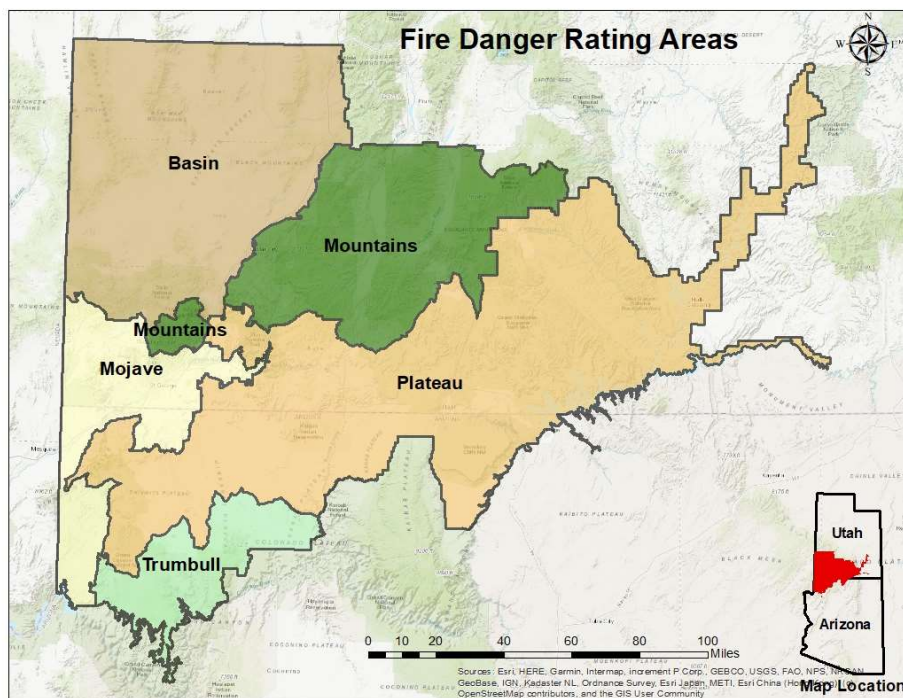


WEEKLY FIRE DANGER UPDATE

COLOR COUNTRY INTERAGENCY DISPATCH AREA

Color Country Fire Danger Rating Areas



MAY 15,
2025



COLOR COUNTRY BLM

ARIZONA STRIP BLM

DIXIE NATIONAL FOREST

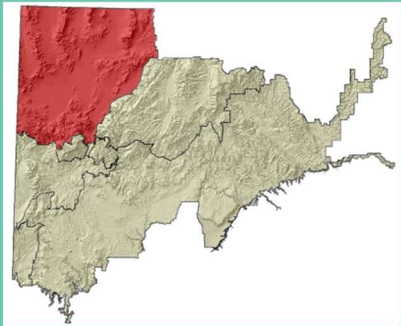
ZION NATIONAL PARK

BRYCE CANYON NATIONAL
PARK

SOUTHERN PAIUTE AGENCY

UTAH DIVISION OF
FORESTRY, FIRE AND STATE
LANDS

BASIN



COLOR COUNTRY BLM

ARIZONA STRIP BLM

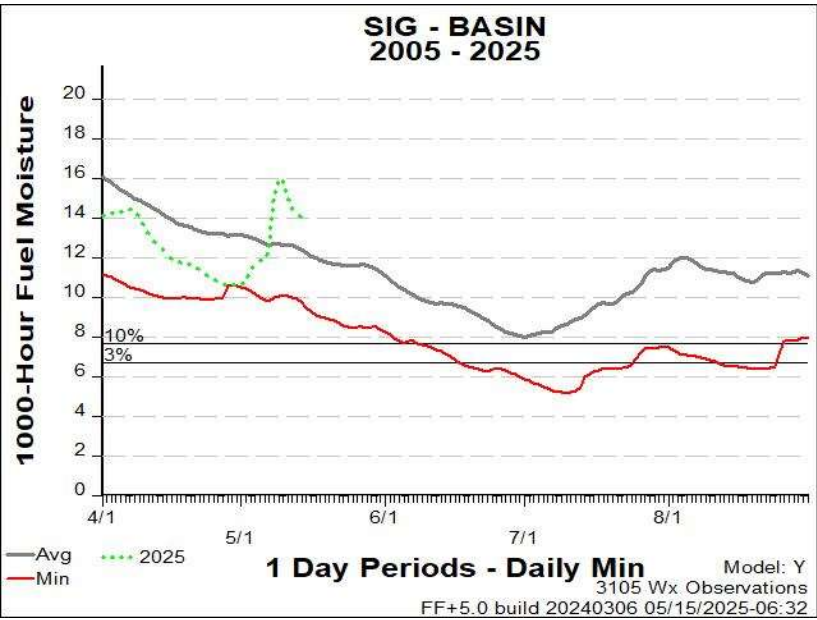
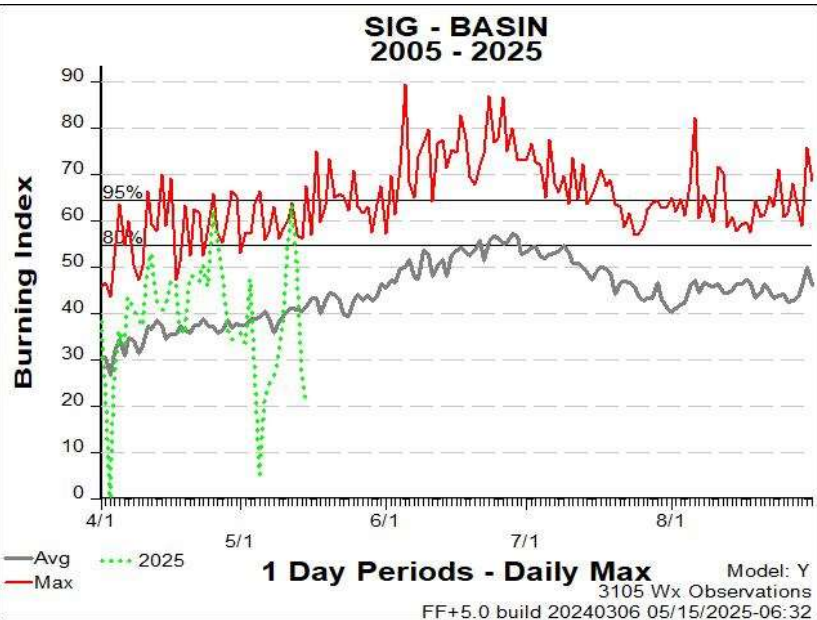
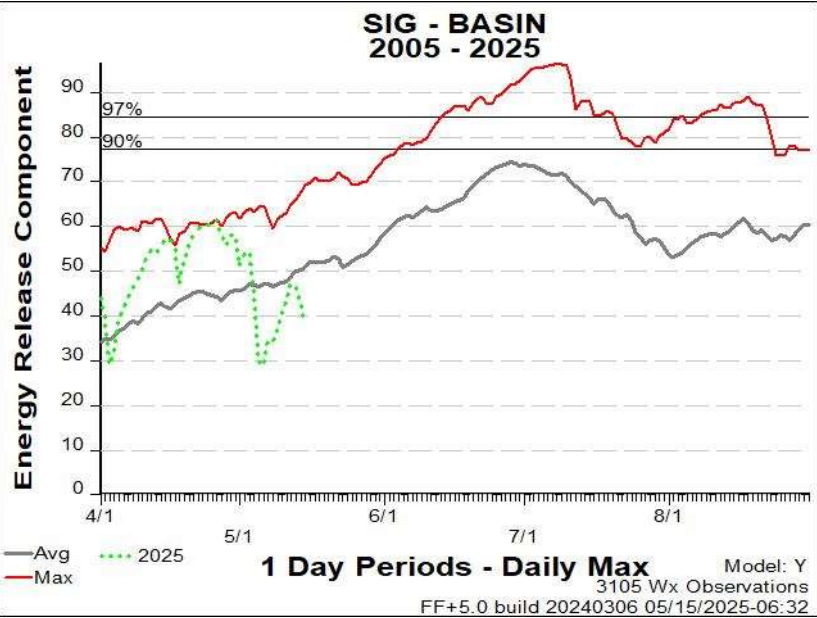
DIXIE NATIONAL FOREST

ZION NATIONAL PARK

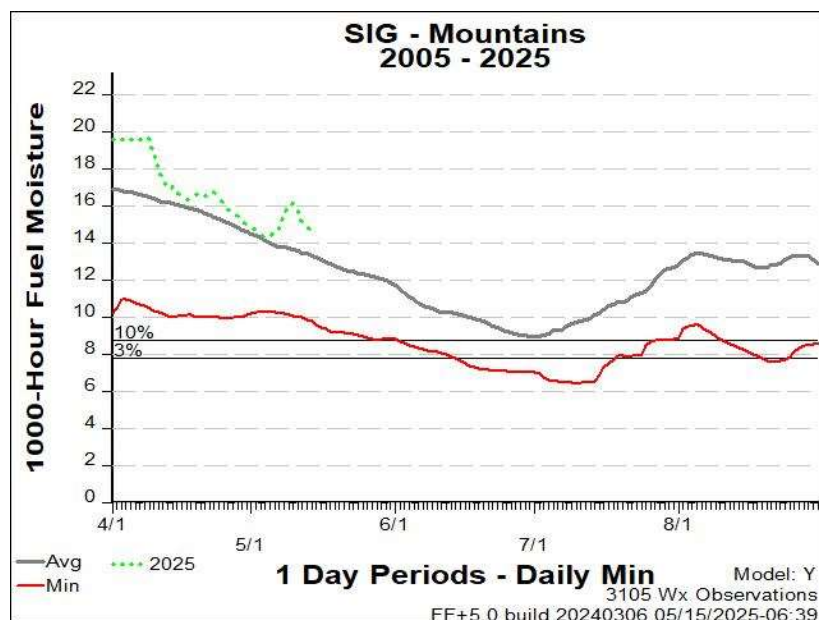
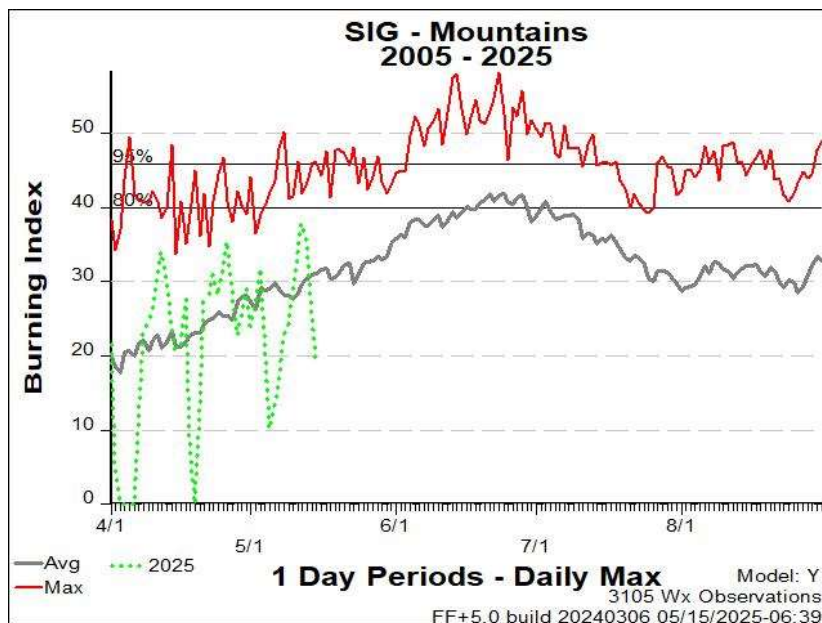
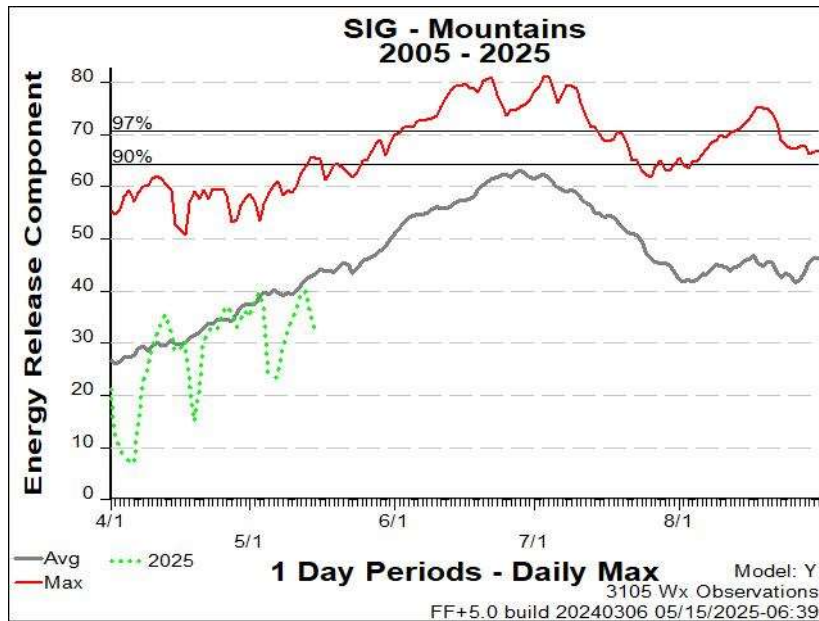
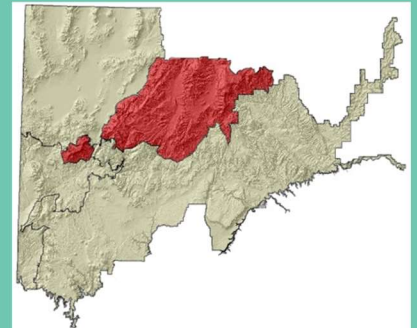
BRYCE CANYON NATIONAL PARK

SOUTHERN PAIUTE AGENCY

UTAH DIVISION OF FORESTRY,
FIRE AND STATE LANDS



MOUNTAINS



COLOR COUNTRY BLM

ARIZONA STRIP BLM

DIXIE NATIONAL FOREST

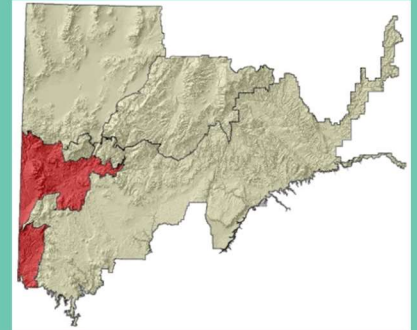
ZION NATIONAL PARK

BRYCE CANYON NATIONAL PARK

SOUTHERN PAIUTE AGENCY

UTAH DIVISION OF FORESTRY,
FIRE AND STATE LANDS

MOJAVE



COLOR COUNTRY BLM

ARIZONA STRIP BLM

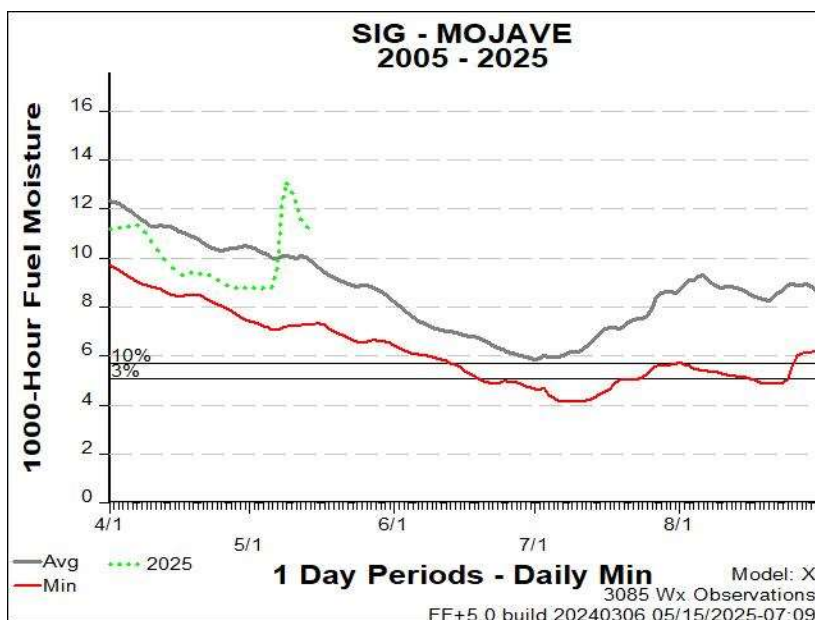
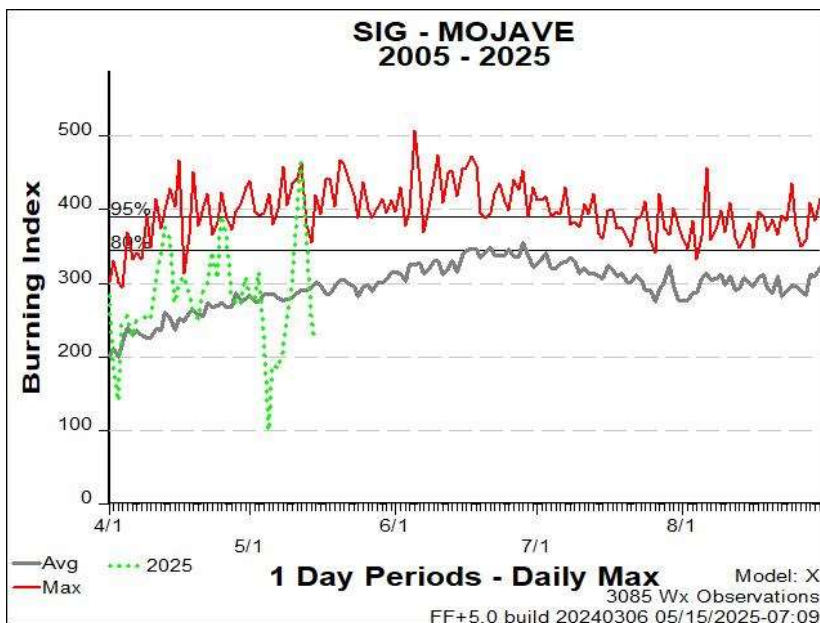
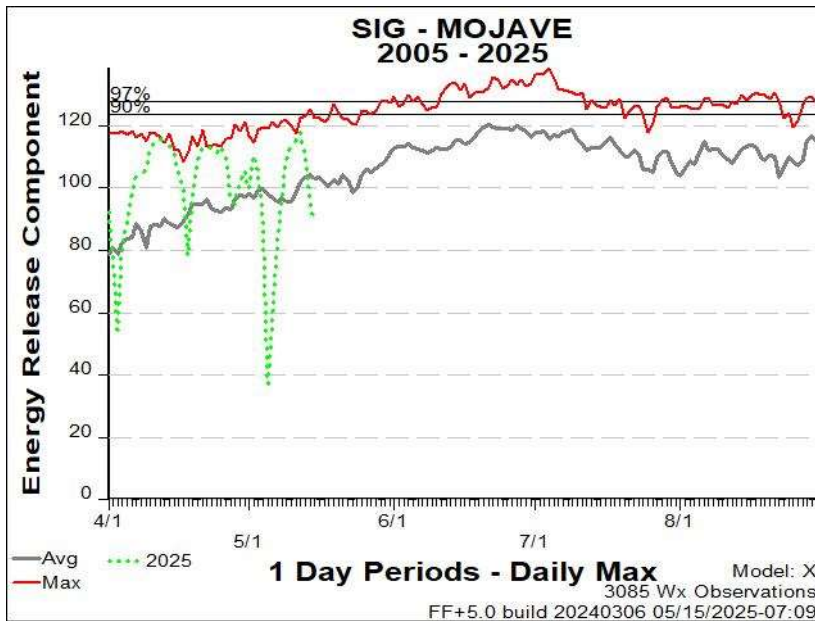
DIXIE NATIONAL FOREST

ZION NATIONAL PARK

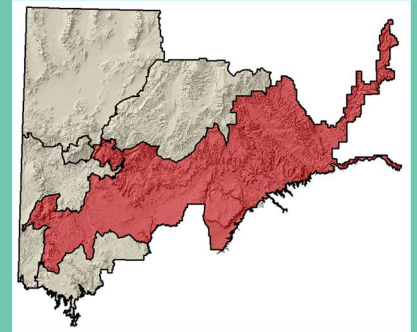
BRYCE CANYON NATIONAL PARK

SOUTHERN PAIUTE AGENCY

UTAH DIVISION OF FORESTRY,
FIRE AND STATE LANDS



PLATEAU



COLOR COUNTRY BLM

ARIZONA STRIP BLM

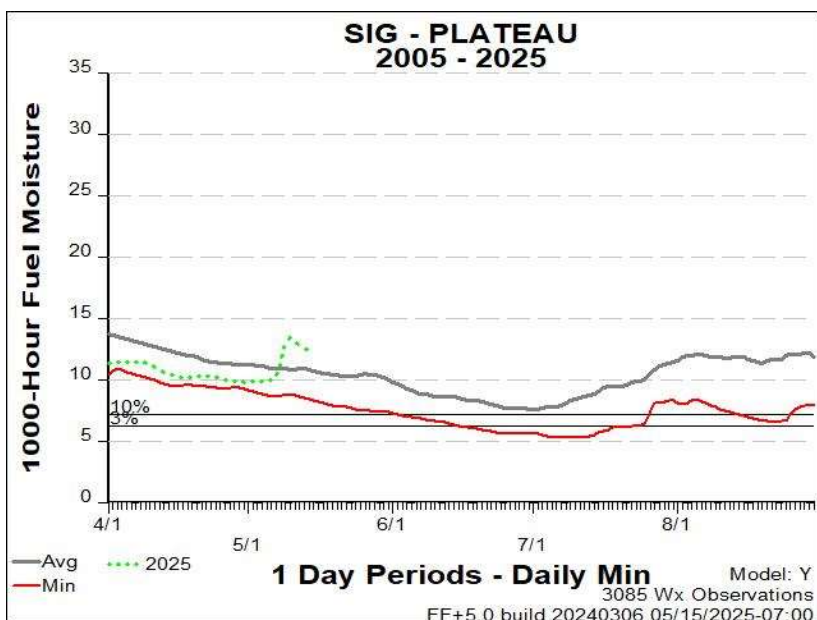
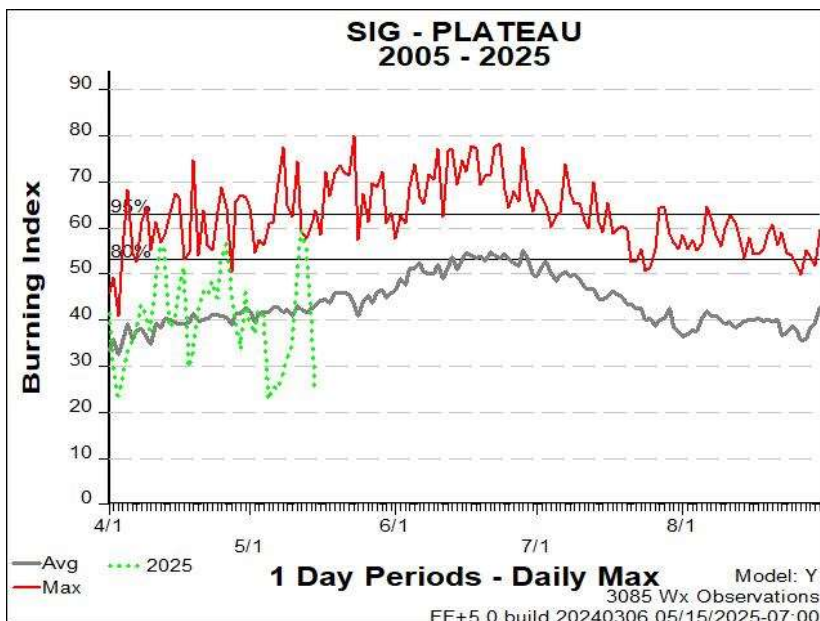
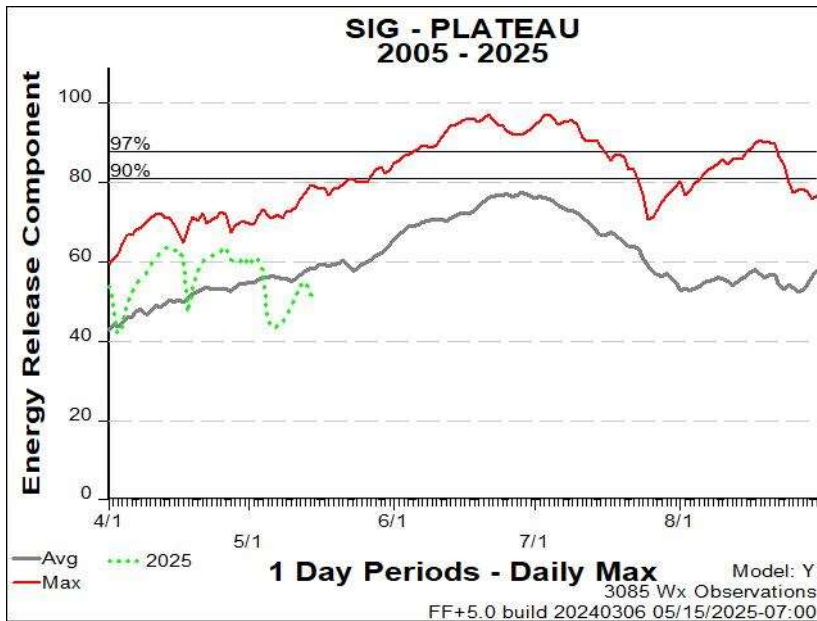
DIXIE NATIONAL FOREST

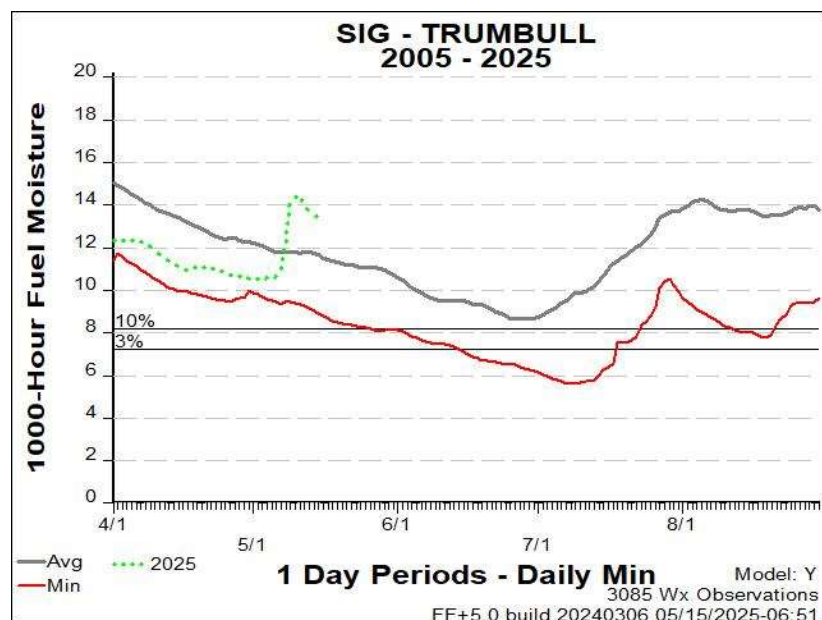
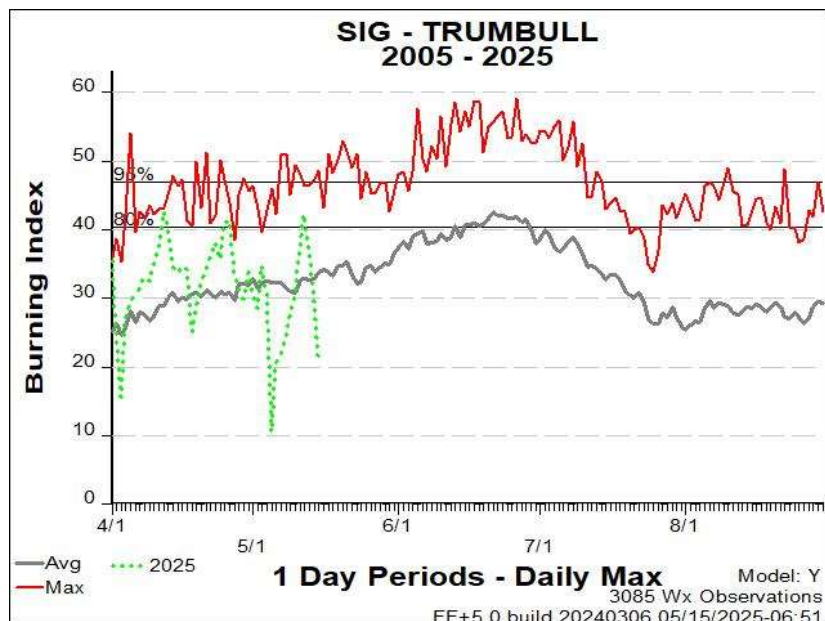
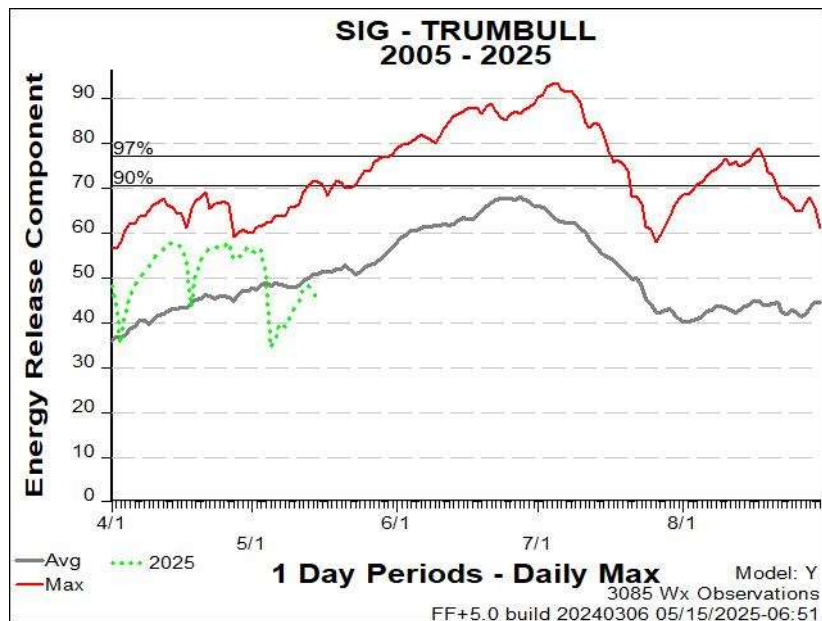
ZION NATIONAL PARK

BRYCE CANYON NATIONAL PARK

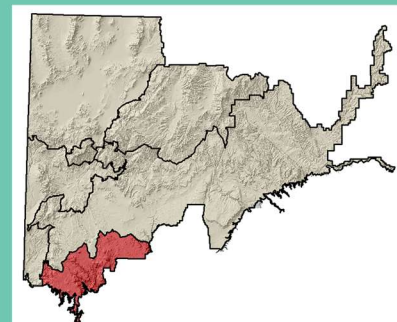
SOUTHERN PAIUTE AGENCY

UTAH DIVISION OF FORESTRY,
FIRE AND STATE LANDS





TRUMBULL



COLOR COUNTRY BLM

ARIZONA STRIP BLM

DIXIE NATIONAL FOREST

ZION NATIONAL PARK

BRYCE CANYON NATIONAL PARK

SOUTHERN PAIUTE AGENCY

UTAH DIVISION OF FORESTRY,
FIRE AND STATE LANDS

7-DAY SIGNIFICANT FIRE POTENTIAL

| Predictive Service Area (PSA) | Wed 14 May | Thu 15 May | Fri 16 May | Sat 17 May | Sun 18 May | Mon 19 May | Tue 20 May | Wed 21 May |
|-------------------------------|------------|------------|------------|------------|------------|------------|------------|------------|
| GB33 - SW Utah Desert | | | | | | | | |
| GB34 - Dixie-Bryce | | | | | | | | |
| GB35 - AZ Strip-Monuments | | | | | | | | |

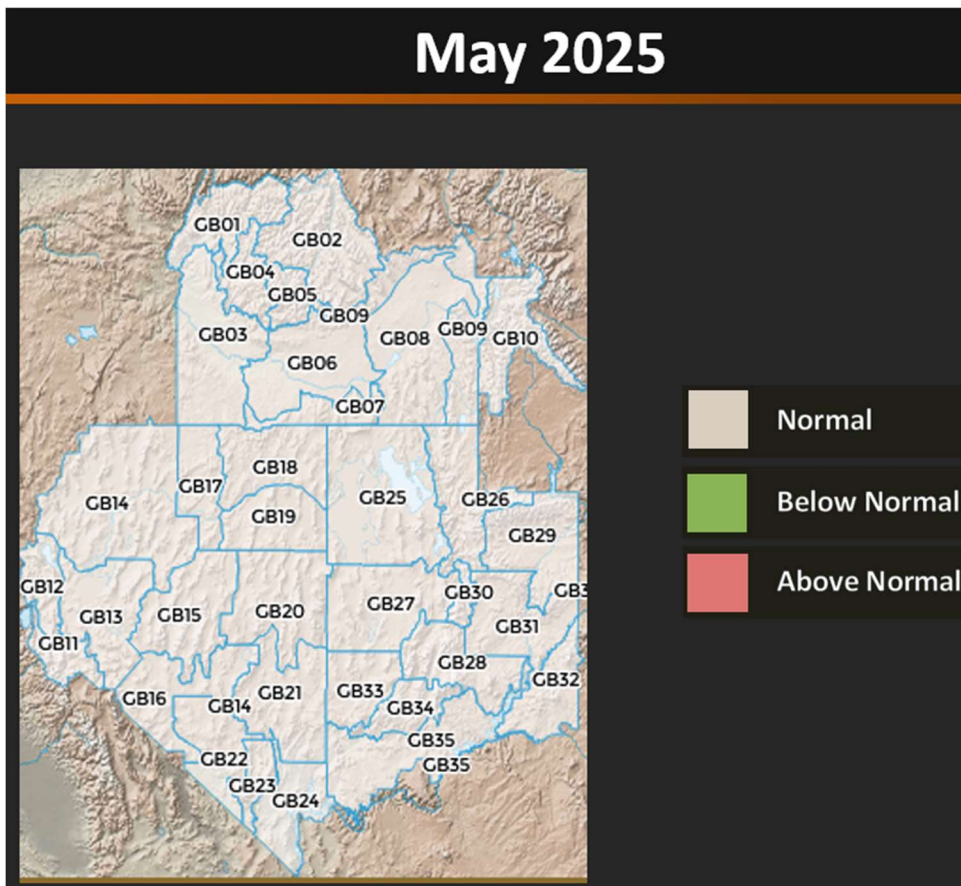
| Legend | |
|----------------------------|--------------------|
| Significant Fire Potential | |
| | No Data |
| | Little or no risk. |
| | Low risk |
| | Moderate risk |
| High Risk Triggers | |
| | H |
| | W |
| | L |

Fuels/Fire Potential:

*** No Discussion During Off-Season Unless Critical Conditions Emerge ***

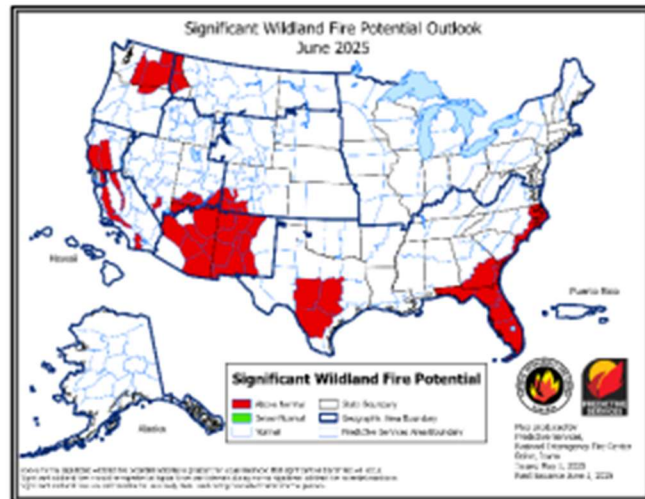
<https://fsapps.nwgc.gov/psp/npsg/forecast#/outlooks?state=forecast&gaccId=12>

FIRE POTENTIAL



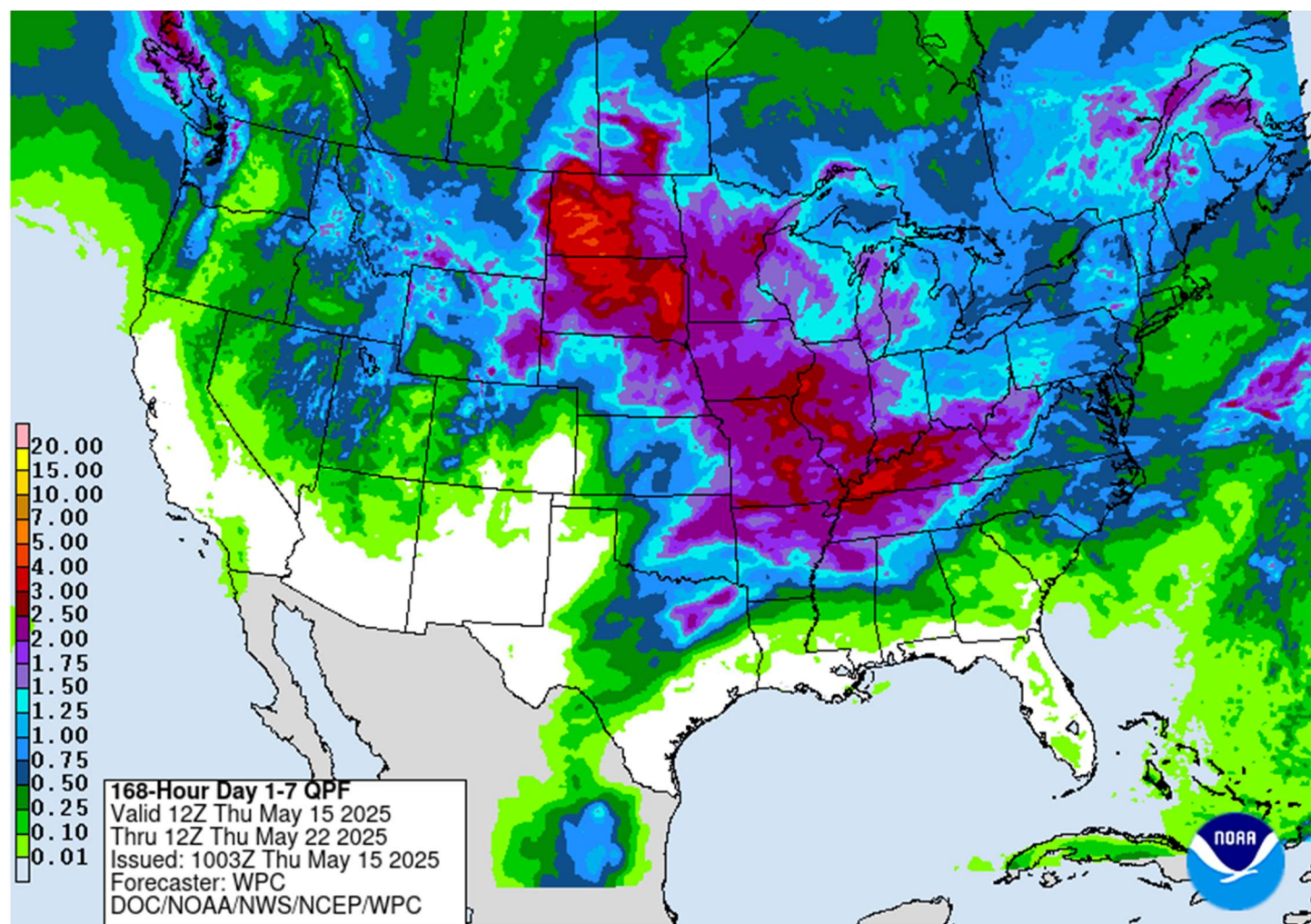
<https://gacc.nifc.gov/gbcc/predictive/docs/monthly.pdf>

Significant Wildland Fire Potential Outlook



https://www.nifc.gov/nicc-files/predictive/outlooks/monthly_seasonal_outlook.pdf

7 Day Rainfall Outlook



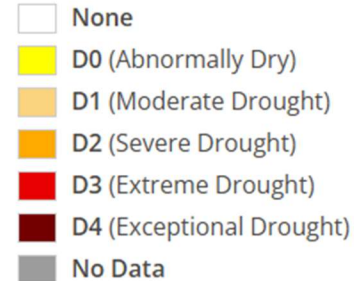
<https://www.wpc.ncep.noaa.gov/qpf/qpf2.shtml>

Drought Monitor

Map released: Thurs. May 15, 2025

Data valid: May 13, 2025 at 8 a.m. EDT

Intensity



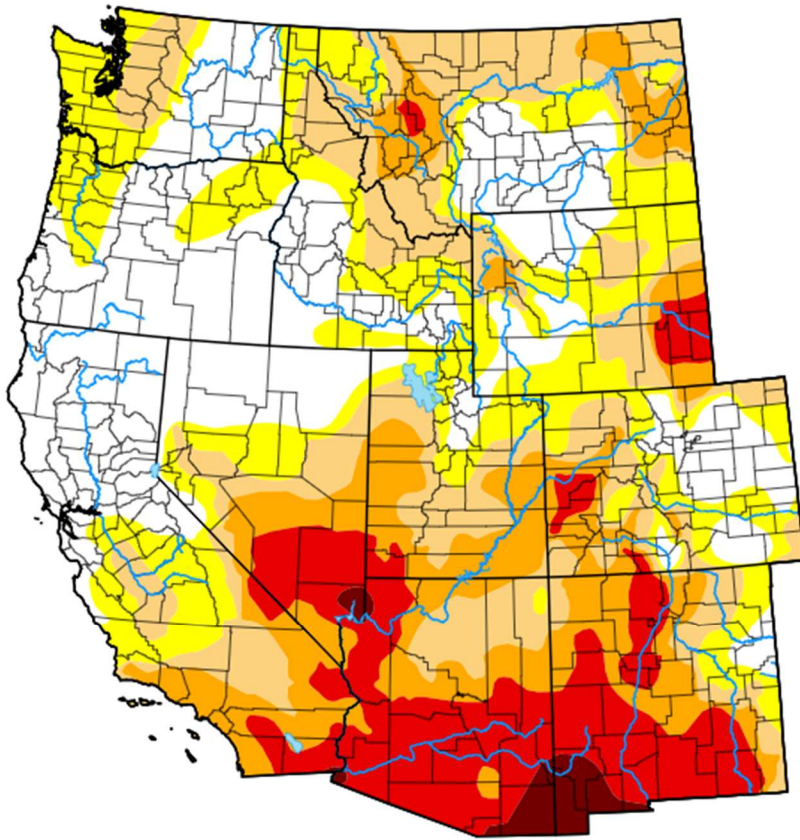
Authors

United States and Puerto Rico Author(s):

[Rocky Bilotta](#), NOAA/NCEI

Pacific Islands and Virgin Islands Author(s):

[Richard Tinker](#), NOAA/NWS/NCEP/CPC



<https://droughtmonitor.unl.edu/CurrentMap/StateDroughtMonitor.aspx?West>

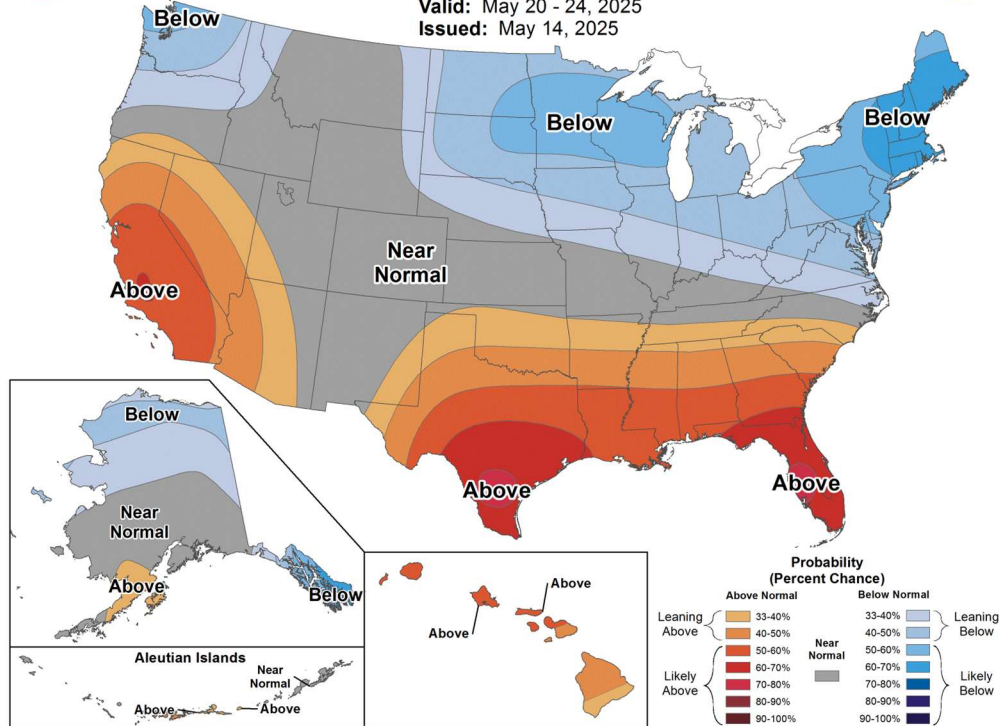
West

Average temperatures were above normal across nearly the entire region this week, while below-normal temperatures were observed across much of New Mexico, and in parts of Arizona and along the coast of Washington, Oregon, and California, where temperatures were between 1 to 6 degrees F below normal. Conversely, Montana observed temperatures ranging between 3 to 15 degrees F above normal this week. Precipitation varied across the region this week, with beneficial amounts falling in parts of the Southwest and southern Montana. Exceptional drought (D4) was improved along the Nevada-Arizona border, while **extreme drought (D3) was trimmed back in southern Utah**, southern Nevada, eastern California, and western Arizona. Severe drought (D2) was improved in parts of Utah, Arizona, while moderate drought (D1) was reduced in Montana. Conversely, above-normal temperatures and below-normal precipitation resulted in the expansion of exceptional drought in southern New Mexico, severe drought in Montana, and moderate drought in northern portions of Washington, Idaho and Montana. Abnormal dryness (D0) was also expanded in western Washington, northeast Oregon, northern and southern Idaho, and in southern California this week.



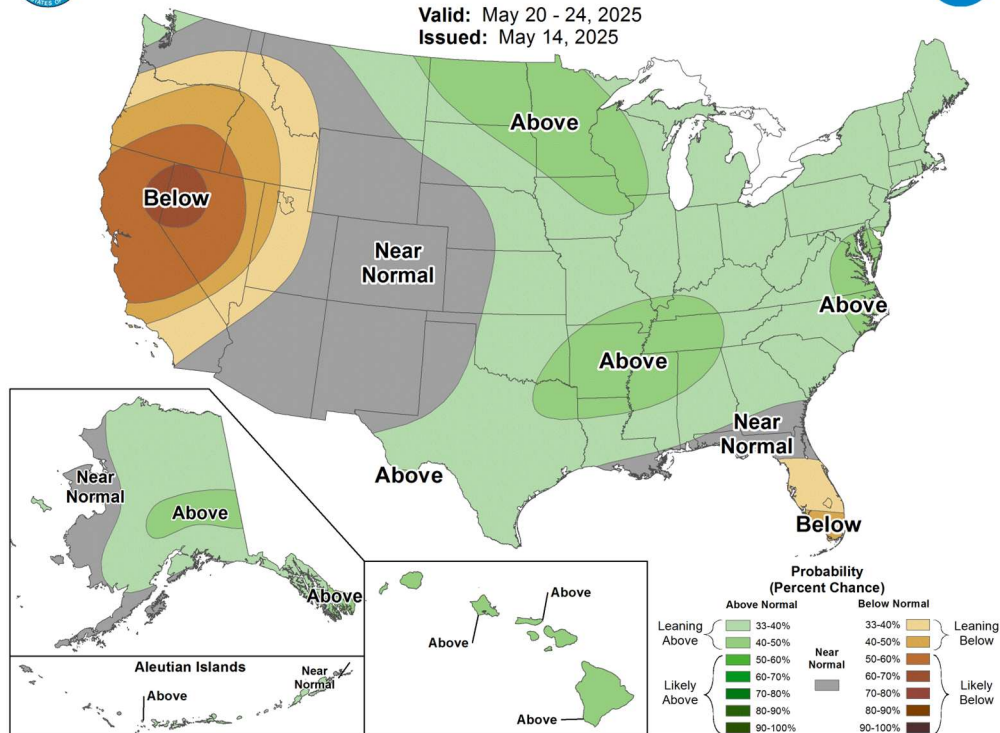
6-10 Day Temperature Outlook

Valid: May 20 - 24, 2025
Issued: May 14, 2025



6-10 Day Precipitation Outlook

Valid: May 20 - 24, 2025
Issued: May 14, 2025

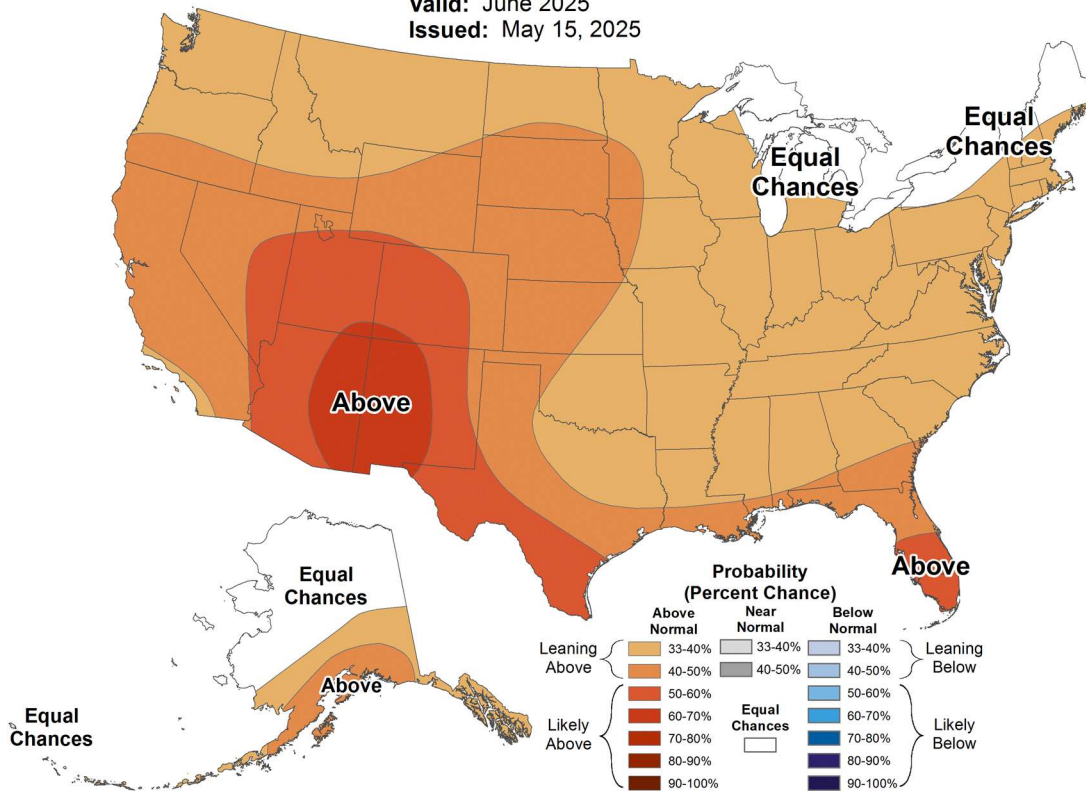




Monthly Temperature Outlook



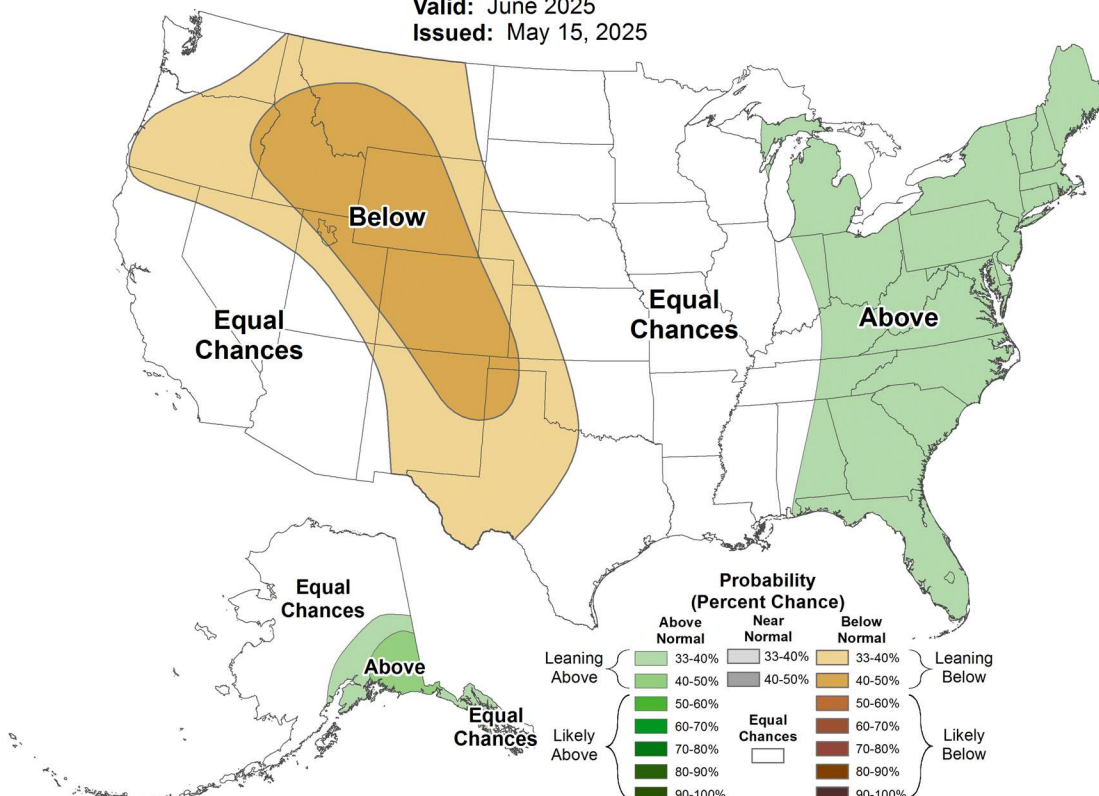
Valid: June 2025
Issued: May 15, 2025



Monthly Precipitation Outlook



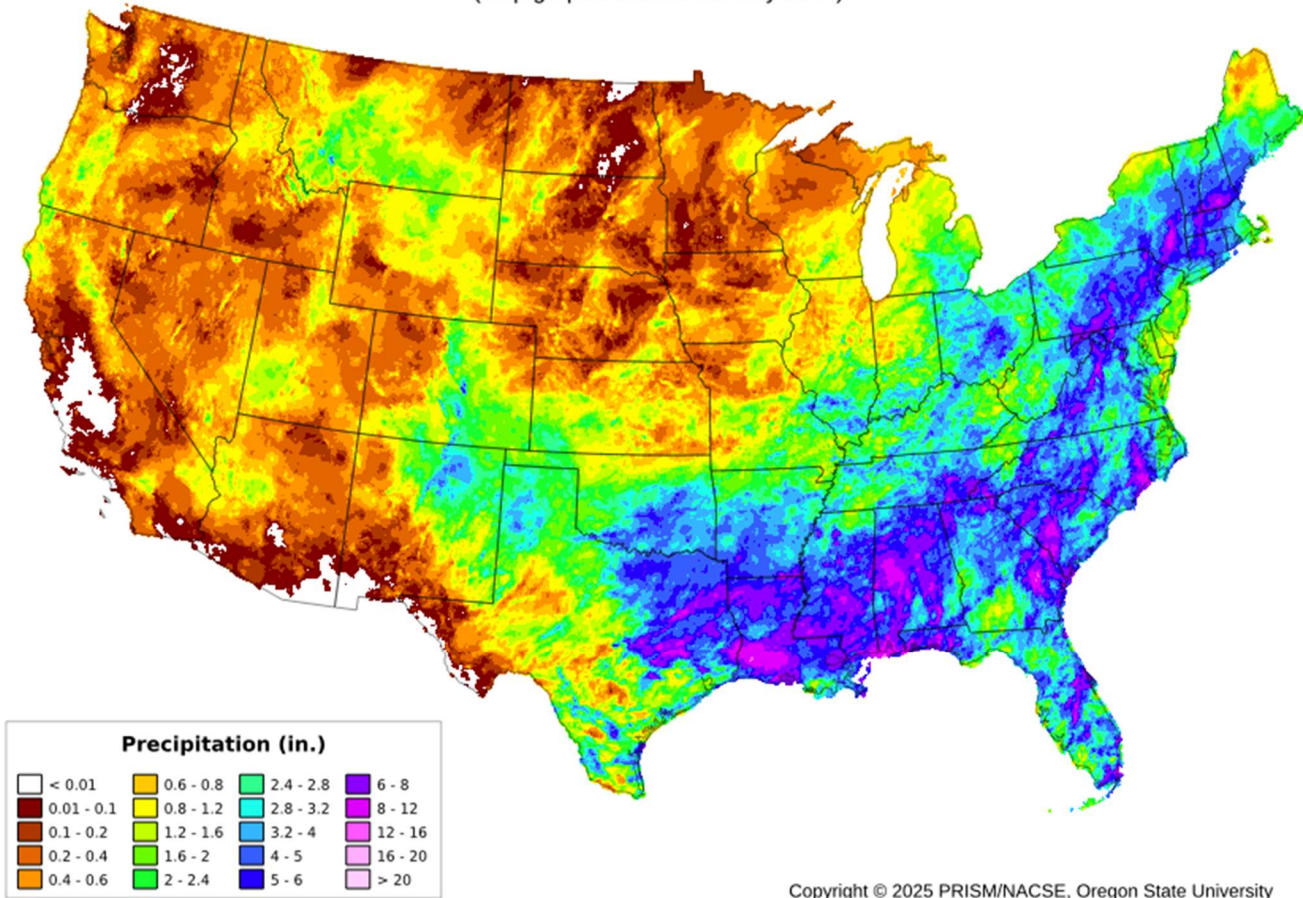
Valid: June 2025
Issued: May 15, 2025



Total Precipitation: 01 May 2025 - 14 May 2025

Period ending 7 AM EST 14 May 2025

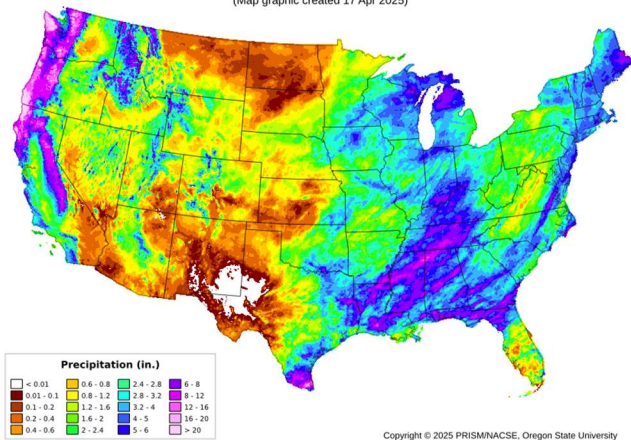
(Map graphic created 15 May 2025)



Total Precipitation: Mar 2025

Period ending 7 AM EST 31 Mar 2025

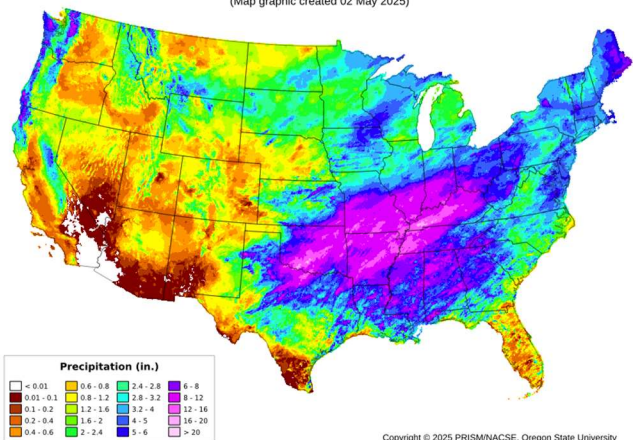
(Map graphic created 17 Apr 2025)



Total Precipitation: Apr 2025

Period ending 7 AM EST 30 Apr 2025

(Map graphic created 02 May 2025)



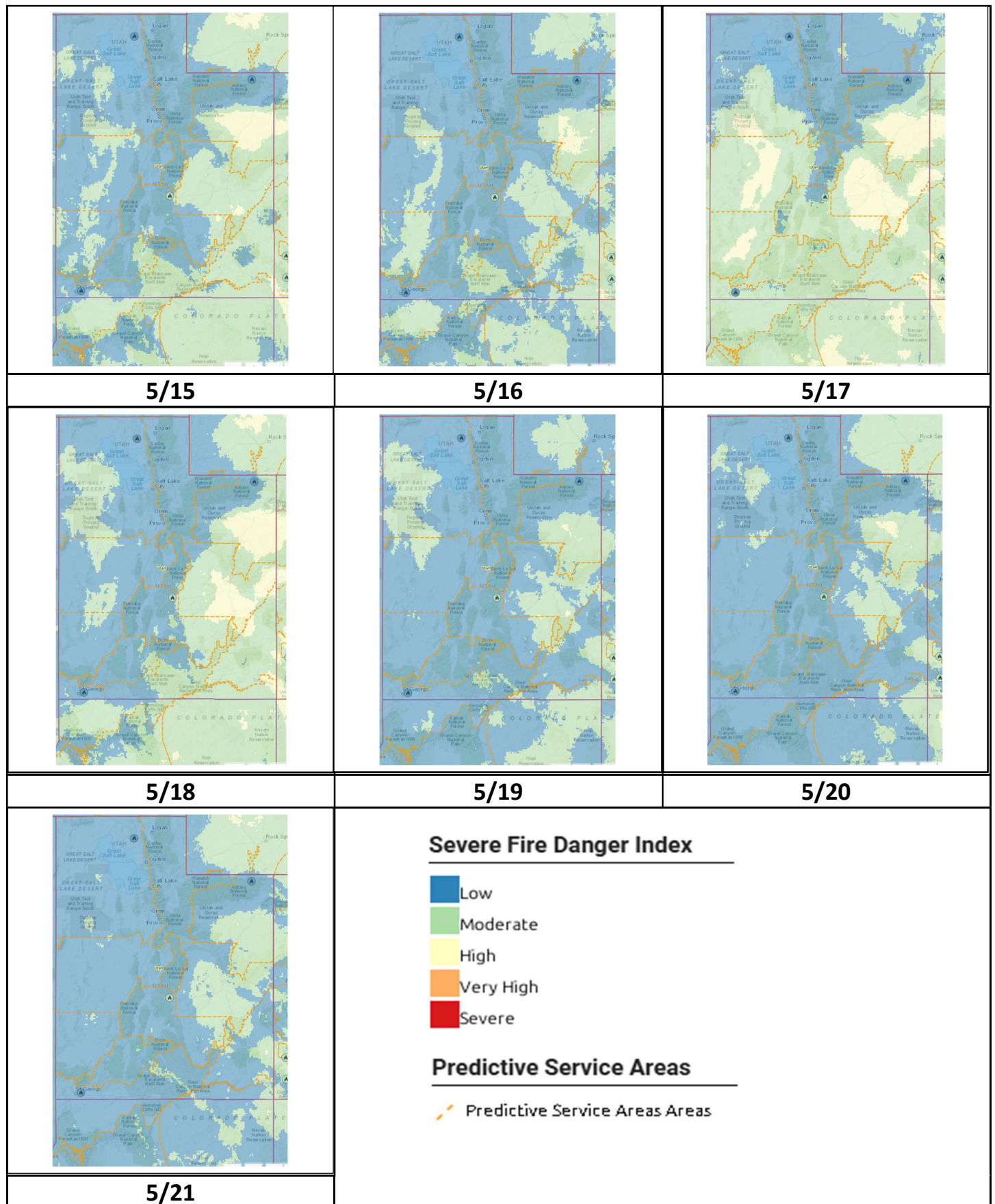
Precipitation Summary 5/15/2025

| Station | Info | 2 days | 5 days | 7 days | 10 days | 30 days |
|---|-----------------|--------|--------|--------|---------|---------|
| BSTU1 BRIMSTONE RESERVOIR | RAWS 5620 ft | 0.13 | 0.15 | 0.15 | 0.9 | 1.36 |
| ENTU1 ENTERPRISE | RAWS 5399 ft | 0 | 0 | 0 | 0.87 | 1.47 |
| JSPU1 JENSEN SPRING | RAWS 5744 ft | 0.06 | 0.06 | 0.06 | 1.44 | 1.84 |
| CRU1 AGUA CANYON | RAWS 8890 ft | 0 | 0 | 0 | 1.2 | 1.63 |
| ASYU1 ASSAY | RAWS 7914 ft | 0 | 0 | 0 | 0.98 | 1.36 |
| BYCU1 BRYCE CANYON | RAWS 7855 ft | 0 | 0 | 0.37 | 0.61 | 1.07 |
| BUKU1 BUCK FLAT | RAWS 8024 ft | 0 | 0 | 0 | 0.83 | 1.27 |
| TS763 COLOR COUNTRY QD #1 | RAWS 7074 ft | 0 | 0 | 0 | 0 | 0 |
| CTMU1 COTTONWOOD MTN | RAWS 7544 ft | 0.29 | 0.29 | 0.29 | 1.78 | 2.75 |
| TS715 DIXIE PORTABLE #2 | RAWS 8606 ft | 0.02 | 0.02 | 0.02 | 1.3 | 1.92 |
| TS577 DIXIE PORTABLE #3 | RAWS 7878 ft | 0 | 0 | 0 | 0.89 | 1.66 |
| LPRU1 LAVA POINT RAWS | RAWS 7890 ft | 0.01 | 0.01 | 0.01 | 0.44 | 0.94 |
| TT900 PINE VALLEY | RAWS 6607 ft | 0.05 | 0.05 | 0.05 | 0.8 | 1.18 |
| TBSU1 TOM BEST SPRING | RAWS 7718 ft | 0.04 | 0.04 | 0.04 | 0.89 | 1.37 |
| BADU1 BADGER SPRING | RAWS 3990 ft | 0.02 | 0.02 | 0.02 | 0.49 | 0.71 |
| WRRU1 WHITE REEF | RAWS 3440 ft | 0.06 | 0.06 | 0.06 | 0.4 | 0.54 |
| ZIOU1 ZION CANYON | RAWS 3999 ft | 0 | 0 | 0 | 0.35 | 0.72 |
| TT443 BUCKSKIN | RAWS 5725 ft | 0 | 8 | 8 | 9.2 | 9.6 |
| TFRU1 TELEGRAPH FLAT | RAWS 5397 ft | 0 | 0 | 0 | 0.29 | 0.79 |
| QBRA3 BLACK ROCK | RAWS 7224 ft | 0 | 0 | 0 | 0.92 | 1.48 |

| Station | Info | 2 days | 5 days | 7 days | 10 days | 30 days |
|--|-----------------|--------|--------|--------|---------|---------|
| QHUA3 HURRICANE | RAWS 5445 ft | 0 | 0 | 0 | 0.16 | 0.81 |
| QMLA3 MOUNT LOGAN | RAWS 7605 ft | 0 | 0 | 0 | 0.35 | 0.56 |
| QNFA3 NIXON FLATS | RAWS 6500 ft | 0 | 0 | 0 | 0.23 | 0.79 |
| QOKA3 OLAF KNOLLS | RAWS 2900 ft | 0 | 0 | 0 | 0.6 | 1.31 |
| QTTWA3 TWEEDS POINT | RAWS 5200 ft | 0 | 0 | 0 | 0.7 | 1.03 |
| QYJA3 YELLOW JOHN MOUNTAIN | RAWS 6160 ft | 0 | 0 | 0 | 0.19 | 0.54 |
| QBMA3 BUCKSKIN MTN | RAWS 6334 ft | 0 | 0 | 0 | 0.2 | 0.95 |
| QDPA3 DRY PARK | RAWS 8700 ft | 0 | 0 | 0 | 0.59 | 1.41 |
| QFSA3 FOUR SPRINGS | RAWS 6560 ft | 0 | 0 | 0 | 0.6 | 1.1 |
| QGSA3 GUNSIGHT | RAWS 5284 ft | 0 | 0 | 0 | 0.61 | 1.16 |
| QPPA3 PARIA POINT | RAWS 7106 ft | 0 | 0 | 0 | 0.12 | 0.45 |

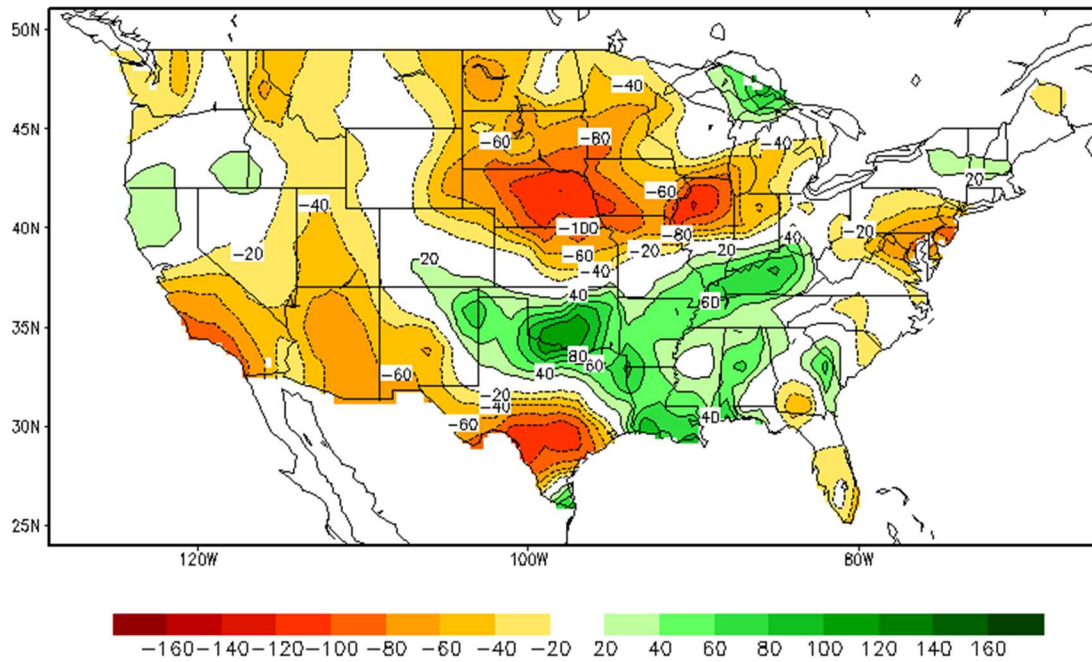
https://mesowest.utah.edu/cgi-bin/droman/precip_summary.cgi?state=SLCfwz&rawsflag=2&day1=0&month1=08&year1=2022&hour1=14&type=0&orderby=n

SIGNIFICANT FIRE POTENTIAL



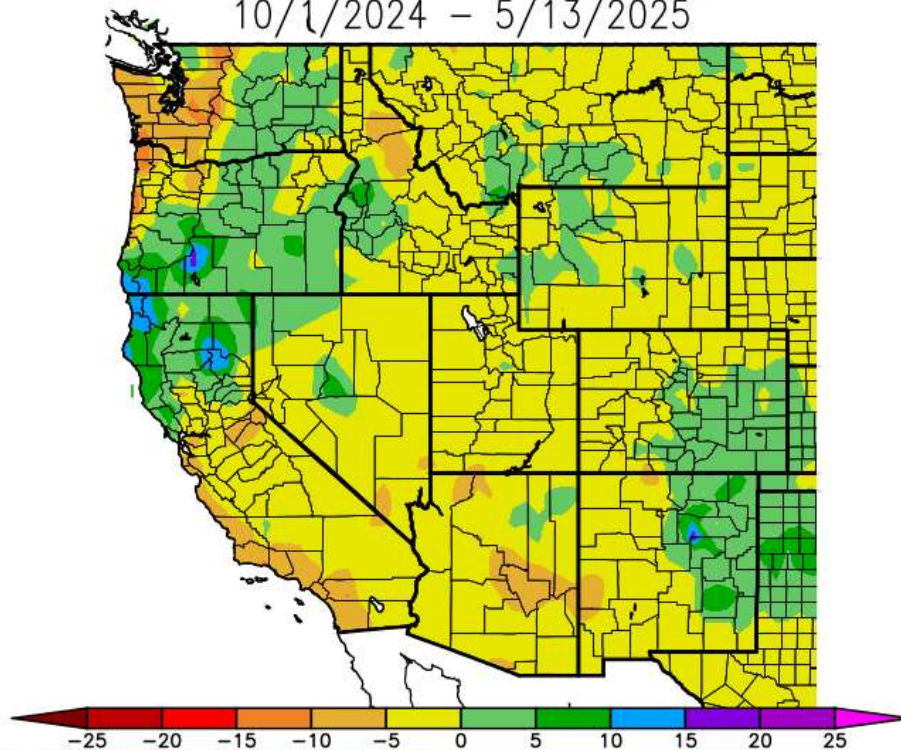
Soil Moisture Anomaly departure from 1991-2020 Climatology (unit: mm)

Calculated Soil Moisture Anomaly (mm)
MAY 13, 2025



<https://www.cpc.ncep.noaa.gov/soilmst/w.shtml>

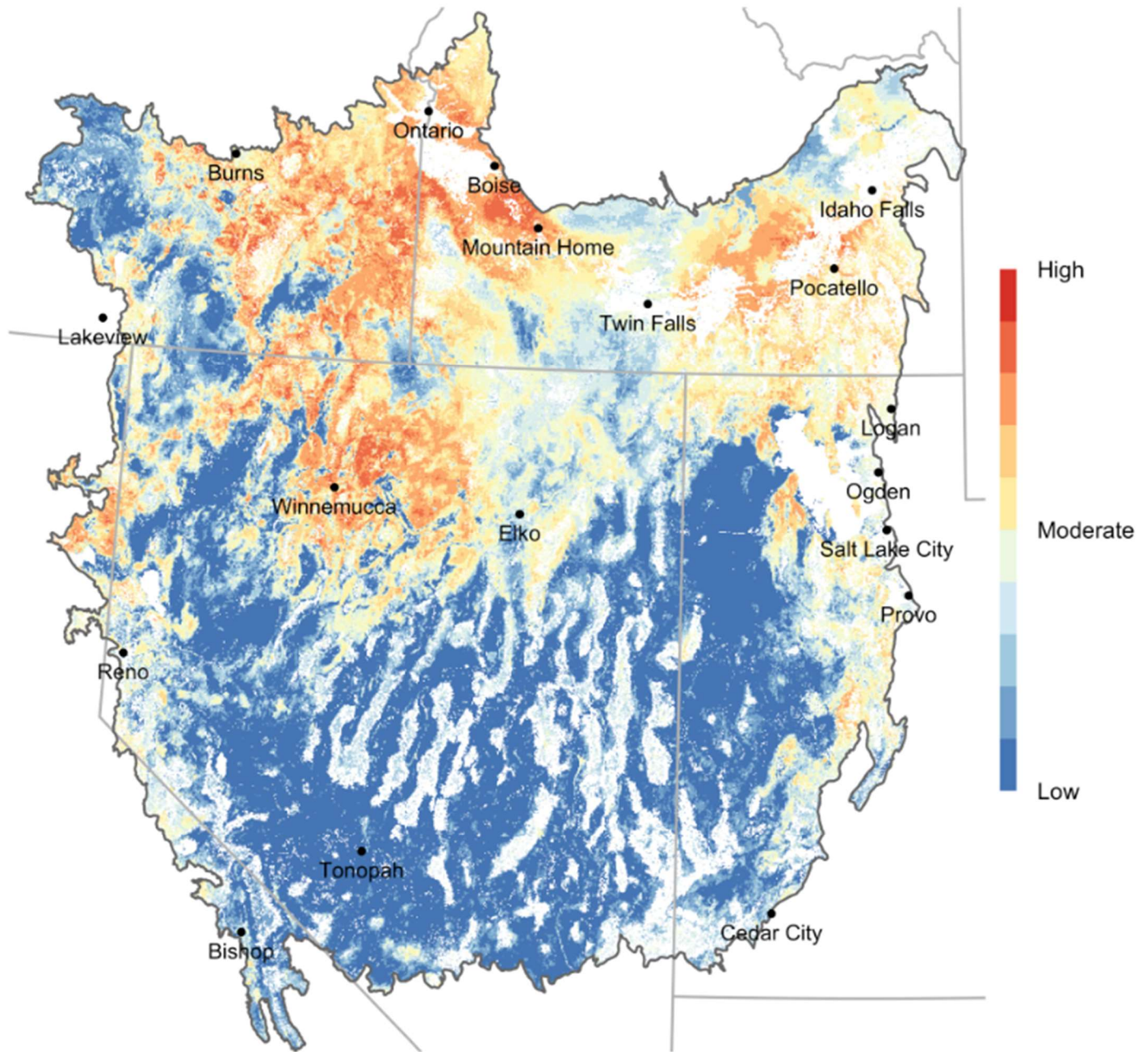
Precipitation Departure from Average (in.)
10/1/2024 – 5/13/2025



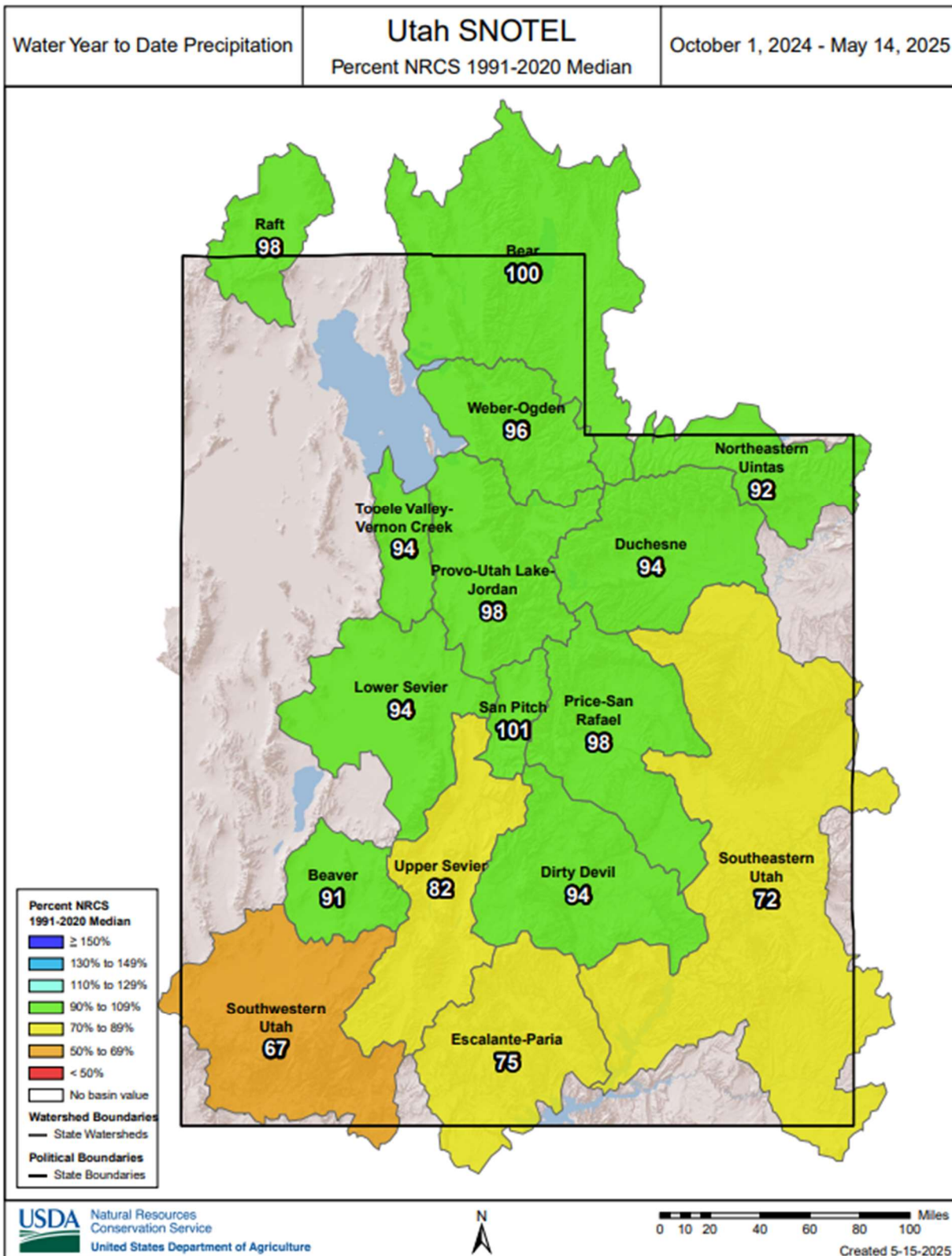
Generated 5/14/2025 at WRCC using provisional data.
NOAA Regional Climate Centers

https://wrcc.dri.edu/anom/wrcc_anom.html

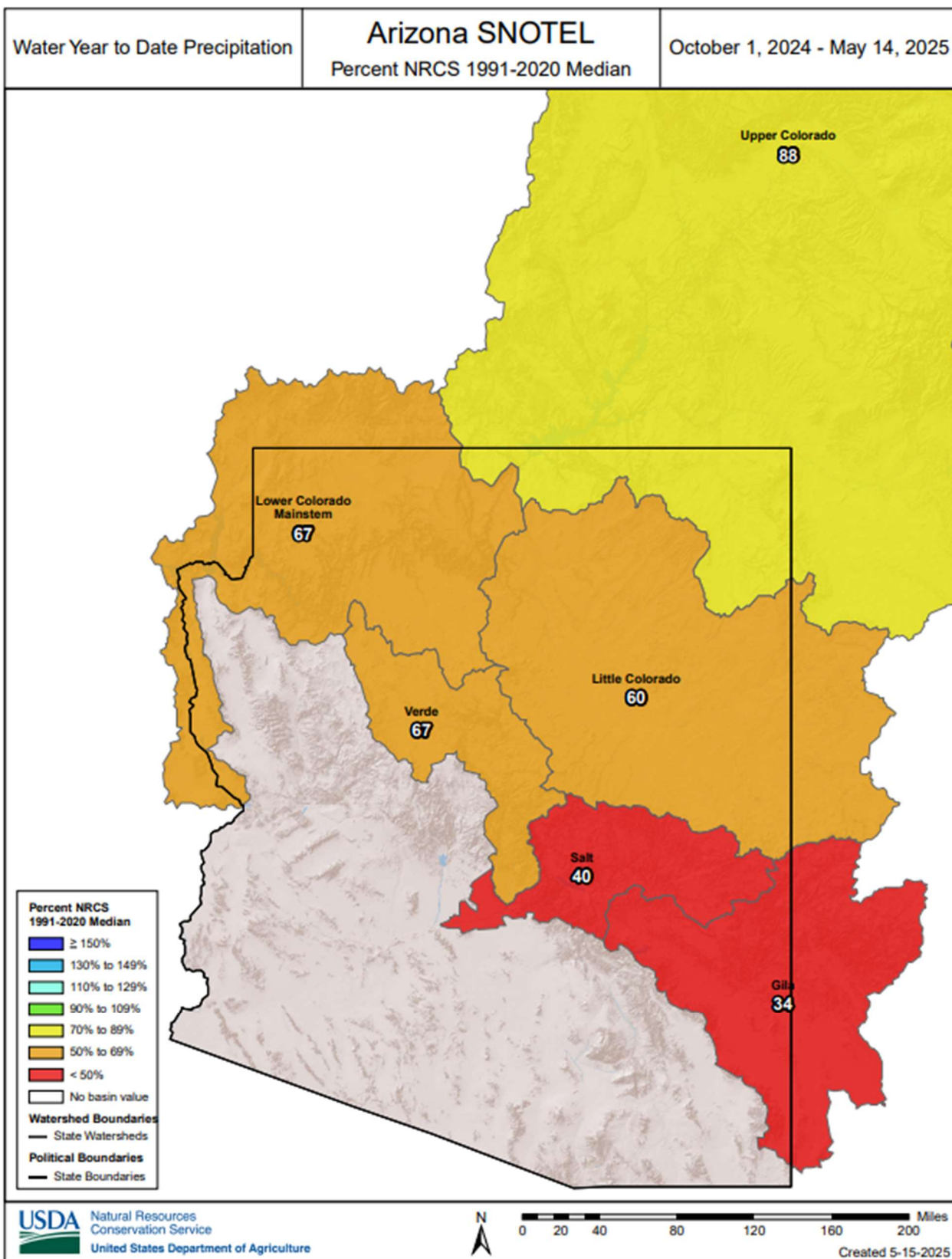
Great Basin Rangeland Fire Probability 2025



<https://rangelands.app/great-basin-fire/>



<https://www.nrcs.usda.gov/programs-initiatives/sswsf-snow-survey-and-water-supply-forecasting-program/snowpack-and>



<https://www.nrcs.usda.gov/programs-initiatives/sswsf-snow-survey-and-water-supply-forecasting-program/snowpack-and>