

# USDA Forest Service, Payette National Forest

## Water Sources Used for Scooper Operations During Fire Management Activities

Aircraft	Cruise Speed	Drop Speed	Maximum Capacity	Time on Station	Maximum Efficient Working Elevation	Comments
CL-415	203 kts	110 kts	1,600 gal	4-5 hrs	8,000' PA	*Note: 1,4,6
CL-215T	190 kts	110 kts	1,421 gal	4-5 hrs	8,000' PA	*Note: 1,4,6
Fire Boss	150 kts	100 kts	800 gal	2.7 hrs	8,000' PA	*Note: 2,3,4,5,6

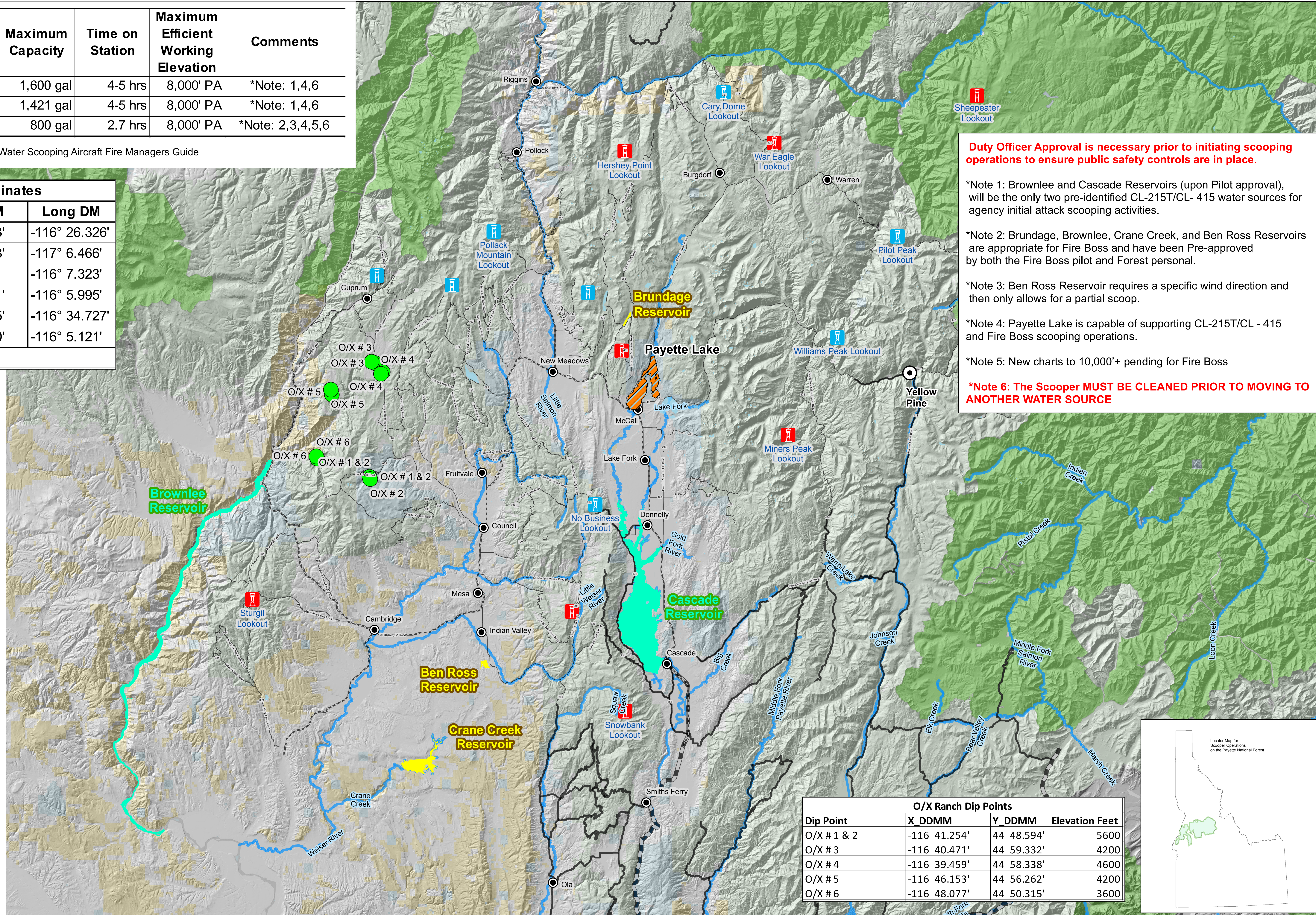
\*Provided by the MN Water Scooping Aircraft Fire Managers Guide

Scooper Reservoir Coordinates		
Reservoir	Lat DM	Long DM
Ben Ross Reservoir	44° 31.063'	-116° 26.326'
Brownlee Reservoir	44° 34.738'	-117° 6.466'
Brundage Reservoir	45° 3.090'	-116° 7.323'
Cascade Reservoir	44° 36.351'	-116° 5.995'
Crane Creek Reservoir	44° 21.885'	-116° 34.727'
Payette Lake	44° 56.790'	-116° 5.121'

WGS 1984 UTM Zone 11

### Aircraft Approved Water Sources

- Brownlee Reservoir: (Pre-Identified CL-415 Water Source)
- Cascade Reservoir: (Pre-Identified CL-415 Water Source)
- Ben Ross Reservoir: (Pre-approved by both the Fire Boss Pilot and Forest Personal)
- Brundage Reservoir: (Pre-approved by both the Fire Boss Pilot and Forest Personal)
- Crane Creek Reservoir: (Pre-approved by both the Fire Boss Pilot and Forest Personal)
- Payette Lake: Payette Lake (Capable of Supporting Fire Boss and CL-215/415)
- O/X Ranch Dip Sites
- Wilderness Areas
- USDA Forest System Lands
- DOI, BLM Lands
- State Lands
- Other Lands
- Private Lands
- Lakes
- Major Rivers
- Major Roads
- - - Highways
- lookout
- lookout/repeater



**Duty Officer Approval is necessary prior to initiating scooping operations to ensure public safety controls are in place.**

\*Note 1: Brownlee and Cascade Reservoirs (upon Pilot approval), will be the only two pre-identified CL-215T/CL-415 water sources for agency initial attack scooping activities.

\*Note 2: Brundage, Brownlee, Crane Creek, and Ben Ross Reservoirs are appropriate for Fire Boss and have been Pre-approved by both the Fire Boss pilot and Forest personal.

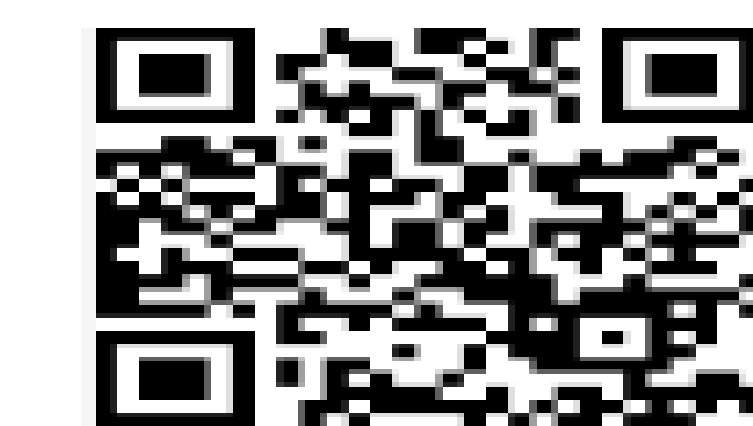
\*Note 3: Ben Ross Reservoir requires a specific wind direction and then only allows for a partial scoop.

\*Note 4: Payette Lake is capable of supporting CL-215T/CL-415 and Fire Boss scooping operations.

\*Note 5: New charts to 10,000'+ pending for Fire Boss

**\*Note 6: The Scooper MUST BE CLEANED PRIOR TO MOVING TO ANOTHER WATER SOURCE**

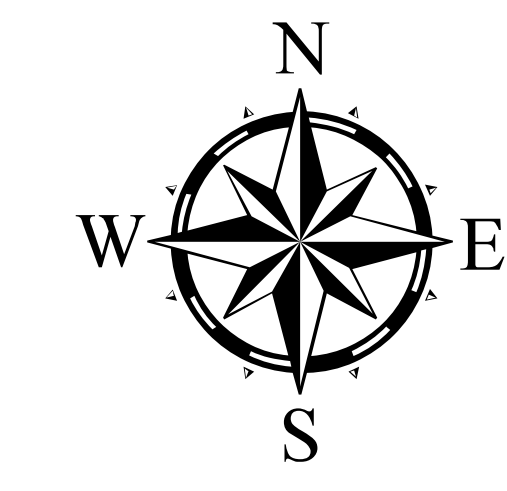
O/X Ranch Dip Points			
Dip Point	X DDMM	Y DDMM	Elevation Feet
O/X # 1 & 2	-116 41.254'	44 48.594'	5600
O/X # 3	-116 40.471'	44 59.332'	4200
O/X # 4	-116 39.459'	44 58.338'	4600
O/X # 5	-116 46.153'	44 56.262'	4200
O/X # 6	-116 48.077'	44 50.315'	3600



Prepared by: McCall Ranger District Office  
For the Payette Forest Fire Management Office

Datum: NAD 1983, Projection UTM 11N  
Document Path: C:\Users\mtari\AppData\Local\Temp\arcB69E\Scooper\_Operations\_34x44\_20210308.mxd

Shawn Walters - Forest Aviation Officer  
Date: 3/9/2022



Date: 3/9/2022

The U.S. Department of Agriculture, Forest Service uses the most current and complete data available. GIS data and product accuracy may vary. They may be developed from sources of differing accuracy, accurate only at certain scales, based on modeling or interpretation, incomplete while being revised or created, etc.  
Using GIS products for purposes other than those for which they were created, may yield inaccurate or misleading results.  
The Forest Service reserves the right to correct, modify, or replace GIS products without notification.