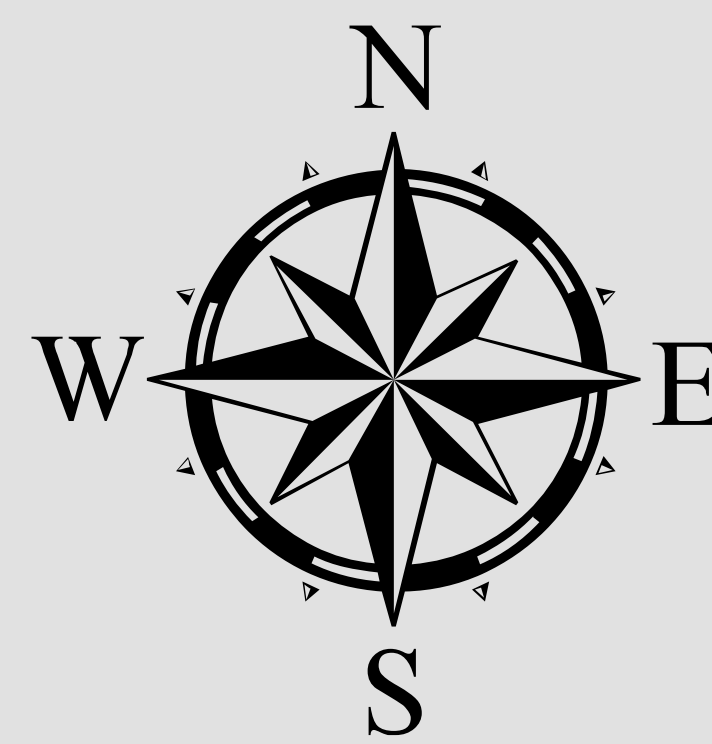


Payette National Forest West Aviation Hazard Map

Date: 4/12/2022

- Non-Charted Airfield
- Non-Charted Helipad
- Bridge
- Cable
- Lookout - Staffed
- lookout/repeater
- Repeater
- Tower
- Cities
- Road
- Highway
- Rivers & Streams
- Transmission Lines
- Military Training Route
- Military Training Route
- Congested Area
- Jettison Area (Lat 44° 49.43' Long -115° 57.20')
- Lakes
- Payette National Forest Boundary

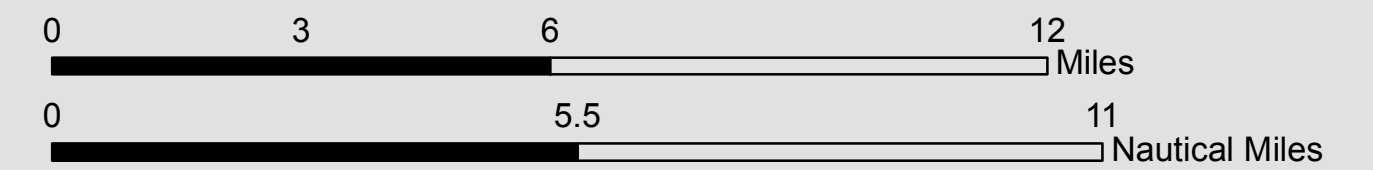
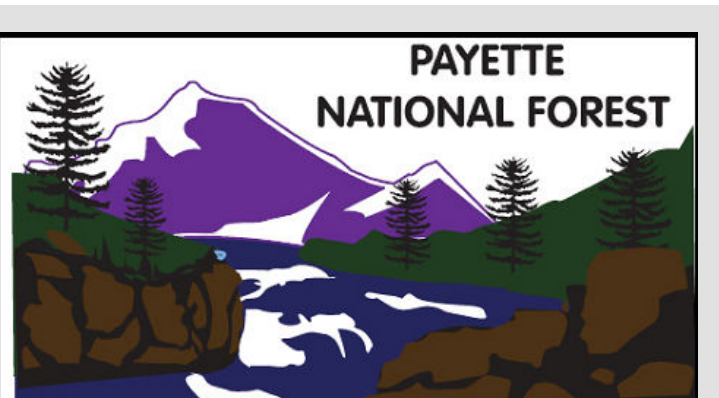
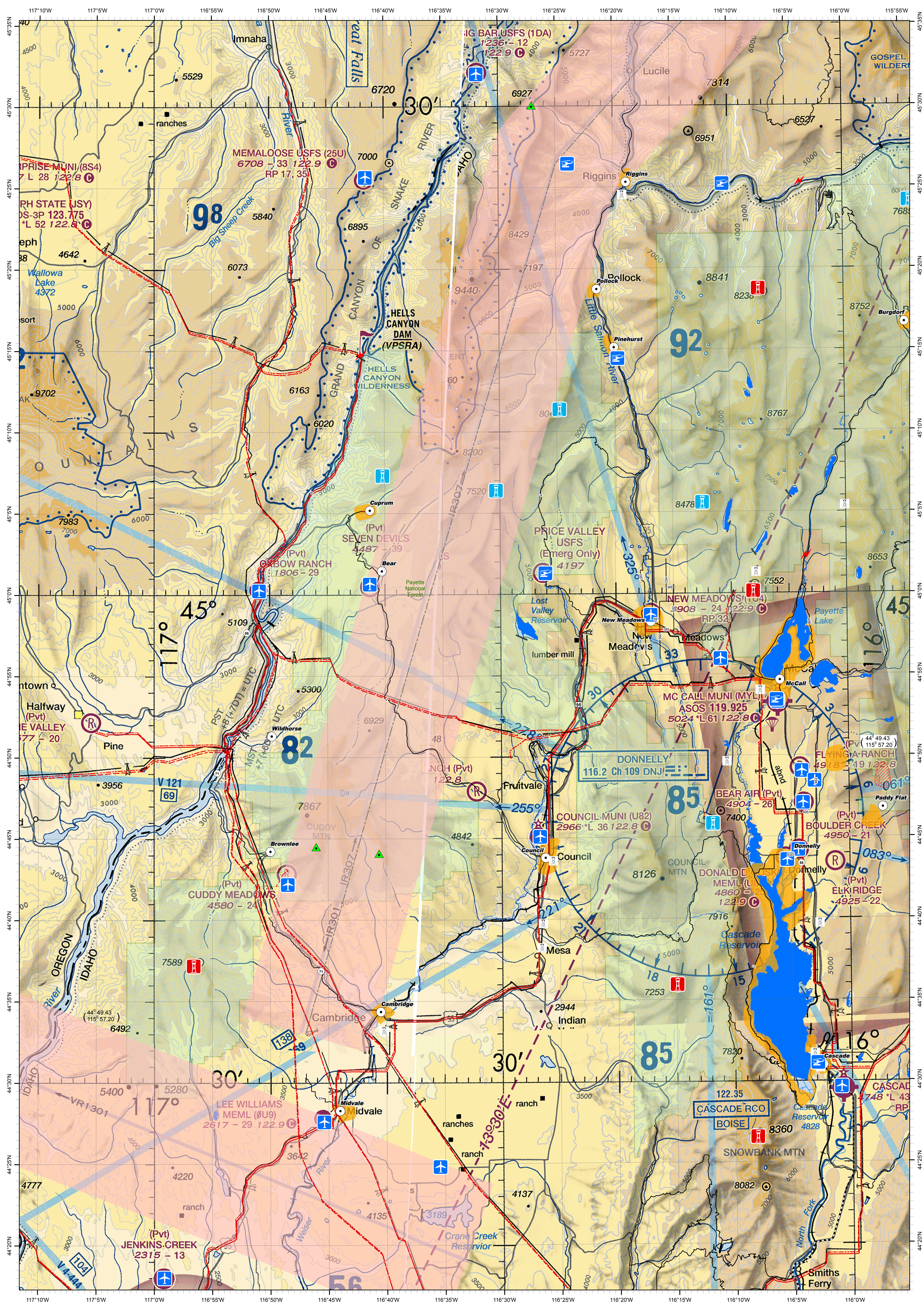


Level 1 Trauma Center and Burn Unit:
University of Utah Hospital, Salt Lake City, UT
UT21 H1, H2 and H3.
40° 46.23' N, -111° 50.13' W

Nearest Level 2 Trauma Center:
St. Alphonsus Regional Hospital Boise, ID
ID91 H1 - Rooftop Helipad and H2 - Ground Helipad West of Main Building.
43° 36.87' N, -116° 15.68' W

Nearest Hospital:
St. Lukes McCall McCall, ID
MYL Medical transfers occur on the North Ramp of the McCall Airport on the Compass Rose.
44° 53.33' N, -116° 06.09' W

Shawn Walters - Forest Aviation Officer



This map was produced for the Payette National Forest Aviation Program in accordance with NWCG Aviation directives, on 4/12/2022 and will be updated yearly.

*Note to Pilots and Cooperating Agencies: Not all aerial wires, cableways, and obstructions that could be hazardous to aircraft are shown on this map. Please use extreme caution when flying in unfamiliar areas.

All Geo-Spatial data came from the Payette NF Aviation Hazard Folder & the R04 PAF Reference Library.

The VFR charts were retrieved from the FAA web site @ https://www.faa.gov/air_traffic/flight_info/aeronav/digital_products/vfr/
Salt Lake City Sec 102.tif, the Great Falls Sec 98.tif, Seattle Sec 98.tif, and the Klamath Falls Sec 101.tif (24 March 2022)

The GIS data and product accuracy may vary. This map is not to be used for navigational purposes. It is only to be used as a supplemental means of identifying vertical obstructions and other known hazards.

The Payette National Forest reserves the right to update, modify, or replace any or all of this data without notifying users. For more information, contact: Mike Tani @ the McCall RD 208 634-0423 or Shawn Walters @ the McCall Hill Base 208 634-0975.