



CENTRAL IDAHO INTERAGENCY FIRE CENTER

Annual 2007 Fire Report



Introduction:

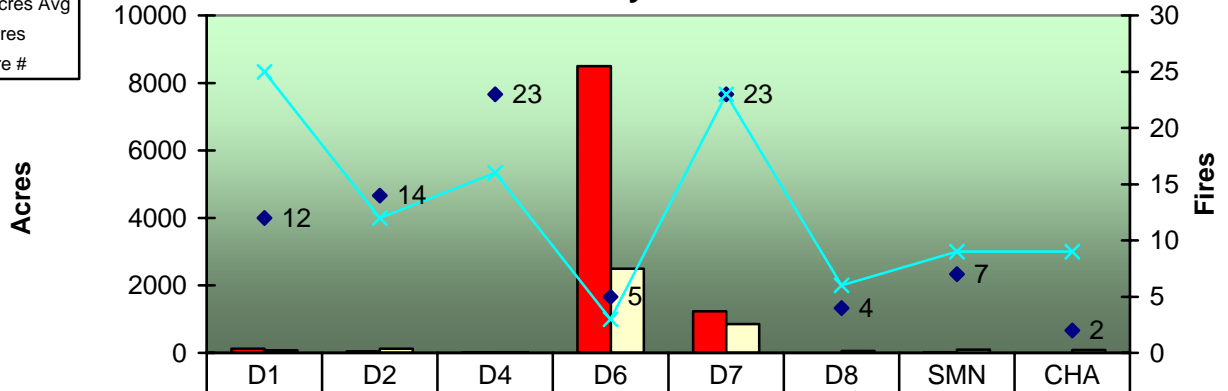
The Salmon-Challis NF had a below average number of fires, but experienced the third highest acres on record. On 8/7 and 8/8 the forest detected 27 fires during the two day period.

FIRE OWNERSHIP TOTALS:

<i>Ownership</i>	<i>TOTALS</i>		<i>Lightning</i>		<i>Human</i>		<i>WFU</i>	
	Fires	Acres	Fires	Acres	Fires	Acres		
FS Salmon-Challis NF	84	82,232	1	1	0	0	87	82,433
• 2006	1	45,244						
• 2005								
BLM Salmon & Challis Field Offices	5	25	2	12	3	0	0	0
• 2006								
• 2005								
ST State of Idaho	0	0	0	0	0	0	0	0
• 2006								
• 2005								
PVT PRIVATE	0	0	0	0	0	0	0	0
• 2006								
• 2005								
2007 YTD TOTALS	89	82,257	3	13	3	0	87	82,433

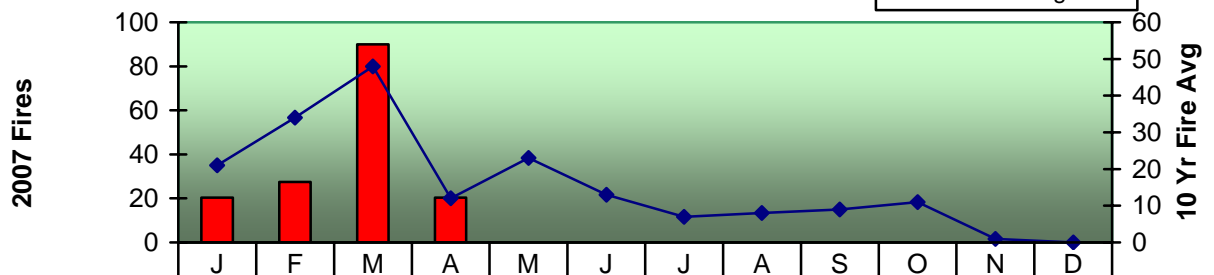
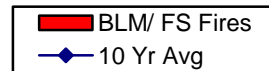


Fires and Acres by Sub Unit



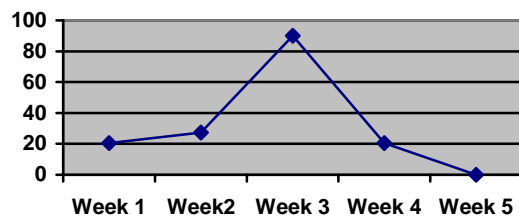
■ '07 Acres	125	43	6	8500	1235	2	23	1
■ 5yr Acres Avg	75	125	23	2500	850	55	99	88
◆ '07 Fires	12	14	23	5	23	4	7	2
✕ 5yr fire #	25	12	16	3	23	6	9	9

Fire Starts by Month (Interagency)

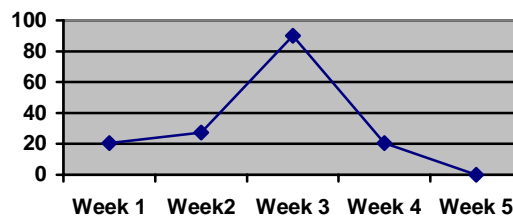


■ BLM/ FS Fires	20.4	27.4	90	20.4							
◆ 10 Yr Avg	21	34	48	12	23	13	7	8	9	11	1

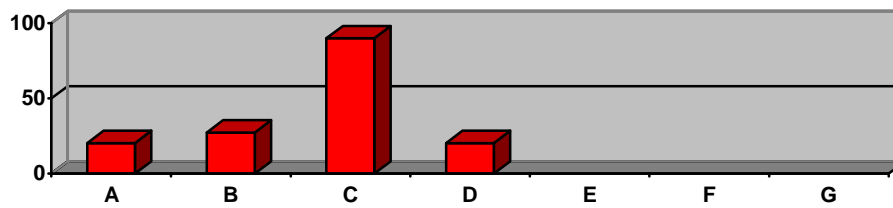
Fire Starts July 2007



Fire Starts August 2007

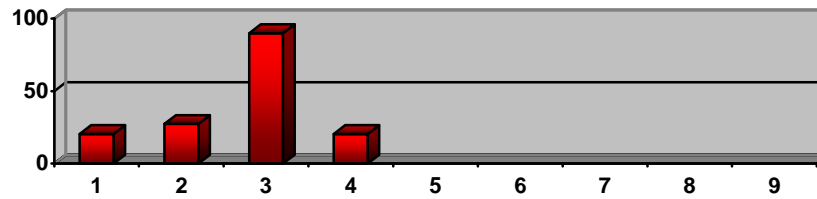


Size Class (Interagency)



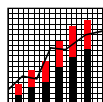
A= B= C= etc 10 year average as second axis?

Cause Class (Interagency)



Second Axis w/ 10 year average

<u>Cause</u>		<u>USFS</u>		<u>BLM</u>		<u>State</u>		<u>PVT</u>	
<u>Code</u>	<u>Type</u>	<u>Fires</u>	<u>Percent</u>	<u>Fires</u>	<u>Percent</u>	<u>Fires</u>	<u>Percent</u>	<u>Percent</u>	<u>Fires</u>
1	Lightning	83	96%						
2	Equipment	0							
3	Smoking	0							
4	Campfire	3	3%						
5	Debris	0							
6	Railroad	0							
7	Arson	1	1%						
8	Children	0							
9	Misc/UNK	0							



Trends

The table lists some statistics comparing the average annual acres burned and median acres burned over several periods. The median acres reported annual has continued to climb throughout most selected periods.

USFS — Shows the progression over a 30 year period... Median acres show a continual growth over 30 years.

BLM — Shows the progression over a 25 year period. Average and Median Fires/ Acres remain almost the same for the period.

Interagency Summary (USFS & BLM)

	<i>YEARS</i>	<i>Average FIRES</i>	<i>Average Annual Acres</i>	<i>Median Annual Acres</i>
<u>5 year</u>	2002-2006	96	40,294	37,687
<u>10 year</u>	1997-2006	106	67,920	21,297
<u>20 year</u>	1987-2006	124	42,912	9,459
<u>30 year</u>	1977-2006	112	33,649	7,411

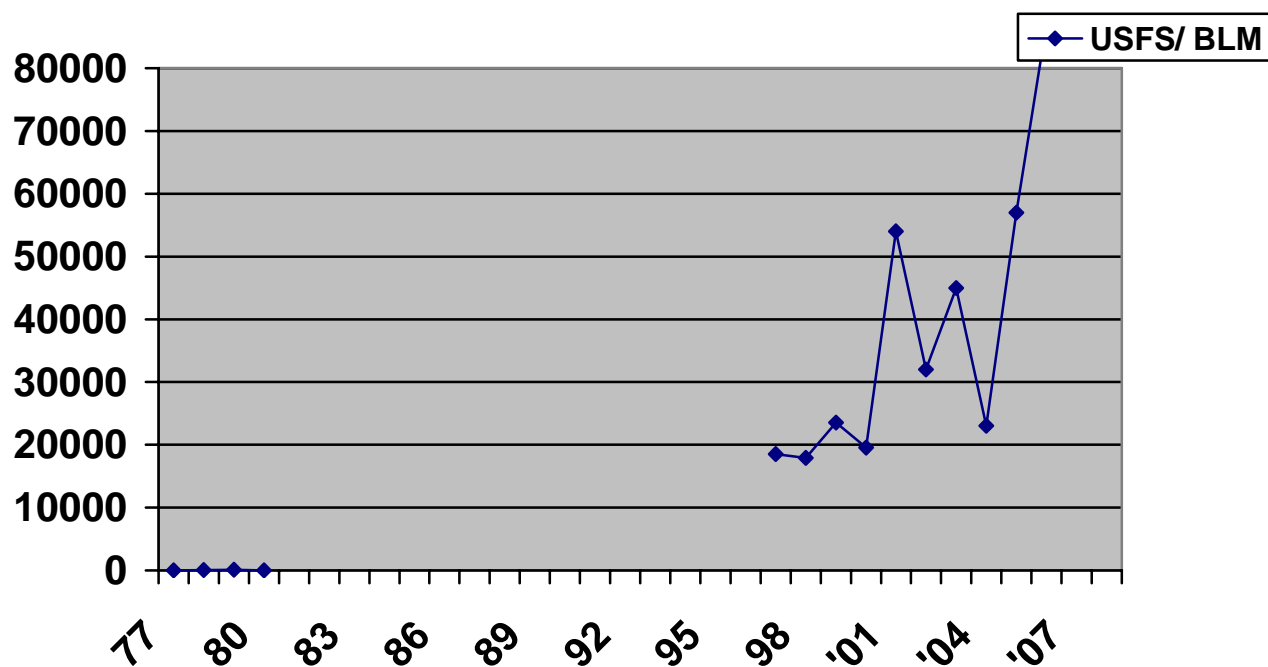
USFS Summary

	<i>YEARS</i>	<i>Average FIRES</i>	<i>Average Annual Acres</i>	<i>Median Annual Acres</i>
<u>5 year</u>	2002-2006	96	40,294	37,687
<u>10 year</u>	1997-2006	106	67,920	21,297
<u>20 year</u>	1987-2006	124	42,912	9,459
<u>30 year</u>	1977-2006	112	33,649	7,411

BLM Summary

	<i>YEARS</i>	<i>Average FIRES</i>	<i>Average Annual Acres</i>	<i>Median Annual Acres</i>
<u>5 year</u>	2002-2006	96	40,294	37,687
<u>10 year</u>	1997-2006	106	67,920	21,297
<u>20 year</u>	1987-2006	124	42,912	9,459
<u>30 year</u>	1977-2006	112	33,649	7,411

INTERAGENCY TOTAL ACRES BY YEAR





Large Fire Summary

There were 13 large fires all on USFS land for 83,218 acres. Most fires started in early August, and tapered off with weather events by Mid-September

<i>Salmon Challis Large Fires 2006</i>				
<u>FIRE NAME</u>	<u>Start Date</u>	<u>Control Date</u>	<u>Out Date</u>	<u>FINAL SIZE</u>
Boundary Complex				0
• Boundary	8-3-06		11-13-06	11,005
• North Elk	8-21-06		11-13-06	6,099
• Knapp 2	9-7-06		10-31-06	633
• East Elk	9-21-06		9-20-06	724
• Mountain Meadow	8-21-06		11-13-06	2,329
Middle Fork Complex				0
• Trail Creek	8-7-06		11-13-06	35,122
• Sheldon Peak	8-21-06		10-31-06	2,384
• Cub	8-8-06		10-31-06	3,908
• Woodtick	8-8-06		10-31-06	480
Potato	7-27-06		9-20-06	18,236
Zane	8-7-06		9-20-06	218
Elkhorn	7-20-06		9-21-06	1,002
Garden Creek	8-7-06		9-21-06	78
13 Fires				for 82,218 acres



Incident Management Team Summary

Central Idaho had X teams all residing on large fires on the Salmon-Challis National Forest. Total Days for teams on unit were xx days at a cost of \$\$.

<u>Incident Management Teams</u>				
<u>FIRE NAME</u>	<u>IMT</u>	<u>ICS TYPE</u>	<u>Team Dates</u>	
			<u>1st Day</u>	<u>Last Day</u>
Boundary Complex				
• Boundary	Frank Cummings	ICT3	8-8	8-9
• North Elk	Jerry Brunner	ICT2	8-10	8-23
• Knapp 2	Larry Raley	ICT2	8-24	9-1
• East Elk	Kim Martins	ICT1	9-2	9-10
• Mountain Meadow	Paul Broyles	ICT1	9-11	9-15
	Beth Lund	ICT2	9-16	9-20
Middle Fork Complex				
• Trail Creek • Sheldon Peak • Cub • Woodtick	Larry Svalberg	FUMT	8-14	8-15 (+8-17)
	Gary Cones	FUMT	8-16	8-28
	Jay Perkins	FUMT	8-29	9-14
	Beth Lund	ICT2	9-15	9-19
Potato Fire	Ken Rogers	ICT3	7-27	7-28
Zane Fire	Nick Lunde	ICT2	7-29	8-6
	Paul Broyles	ICT1	8-7	8-22
	Bill VanBruggen	ICT2	8-23	8-26
	Larry Raley	ICT2	8-27	8-27
	Pat Davis	ICT3	8-28	10-31
Elkhorn	Ivan Smith	ICT3	7-20	7-23
	Nick Lunde	ICT2	7-23	7-28
	Dave Hade	ICT3	7-29	10-01
Garden Creek	Baines	ICT3	8-08	8-12
TOTAL		13 Fires		



Wildland Fire Use Summary

The Salmon / Challis Forest manages 2,XXX,XXX acres of the Frank Church River of No return. The Bureau of Land Management has approximately XXX,XXX of Wilderness Study area, primarily on the Challis Filed office. In 2007, there were 14 Wildland Fire Use (WFU) fires in the Frank Church Wilderness that involved a total of 10 acres managed for resource benefit

<i>START DATE</i>	<i>NAME</i>	<i>ACRES</i>	<i>OUT DATE</i>
5/22/2006	Sleeping Deer	.1	6/27/06
6/27/2006	Loon Creek Point	.1	7/6/06
7/24/2006	Little Soldier	.1	9/20/06
8/10/2006	Big Baldy	.1	9/20/06
8/11/2006	Soldier	78	11/8/2006
8/21/2006	East Elk	724	9/20/2006
8/7/2006	Lost Lake	2	9/20/2006
8/7/2006	Thomas	.25	9/20/2006
8/7/2006	Deer	5	9/20/2006
8/7/2006	Thicket	.1	9/20/2006
8/8/2006	Cub	3,908	10/31/2006
8/8/2006	Norton	.1	9/20/2006
8/8/2006	Elkhorn 2	.5	9/20/2006
8/9/2006	Woodtick	480	10/31/2006
TOTALS	14 fires	5,198	



Prescribed Fire Summary

The Forest treated 9,568 acres on 10 management-ignited burns in 2006.

<i>BURN NAME</i>	<i>BURN TYPE</i>	<i>ACRES BURNED</i>	<i>DISTRICT</i>
North Zone Pile Burns	Pile Burn	136	--
South Zone Pile Burns	Pile Burn	489	--
Stanley Interface RX	Prescribed	40	Yankee Fork RD
Bear Trap	Prescribed	53	North Fork RD
Herd Creek	Prescribed	4,800	Yankee Fork RD
Eddy Basin	Prescribed	200	Challis RD
Silver Creek	Prescribed	700	Salmon-Challis RD
Basin Creek	Prescribed	2850	Yankee Fork RD
Boulder Basing	Prescribed	275	North Fork RD
Misc Pile Burn	Pile Burn	25	--
TOTALS: 10 RX Fires 9,568 Acres			

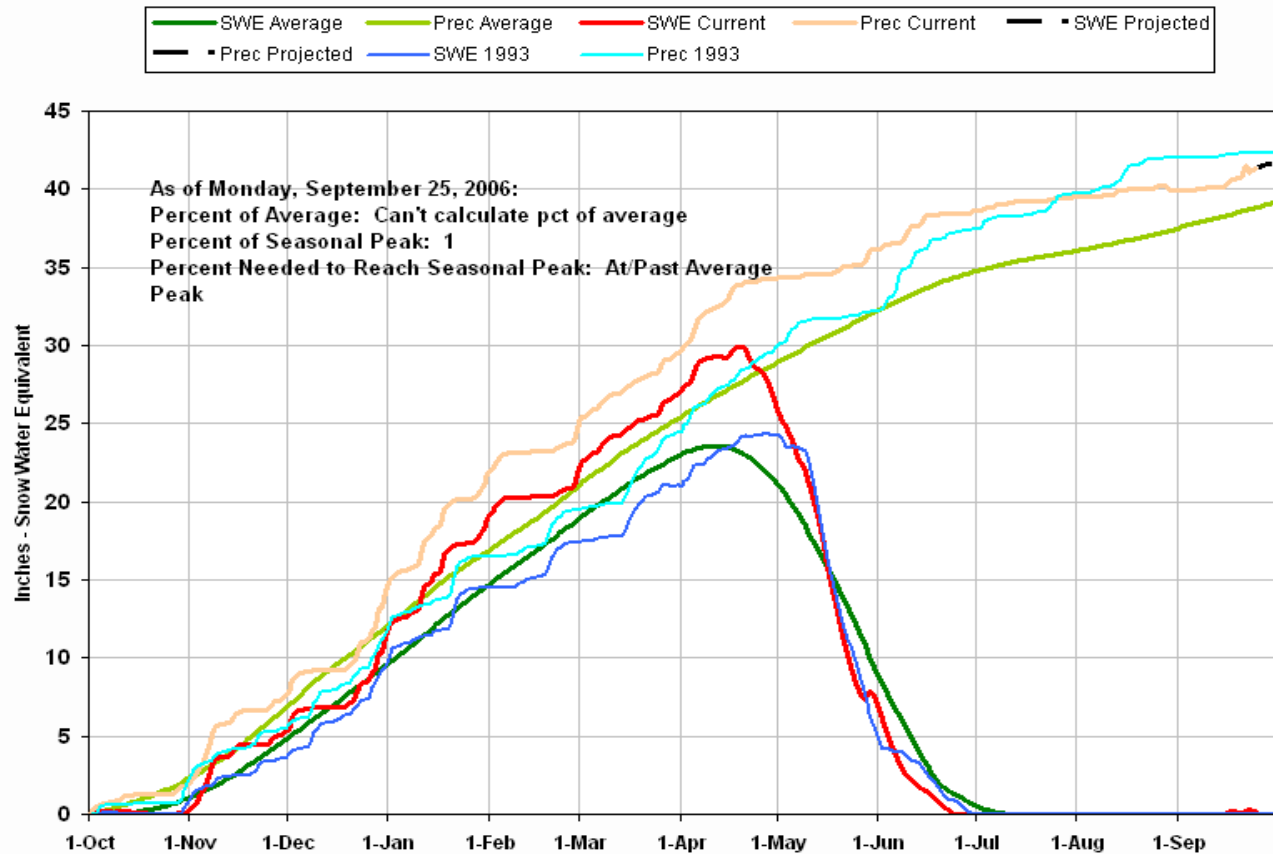
Resource Order Summary

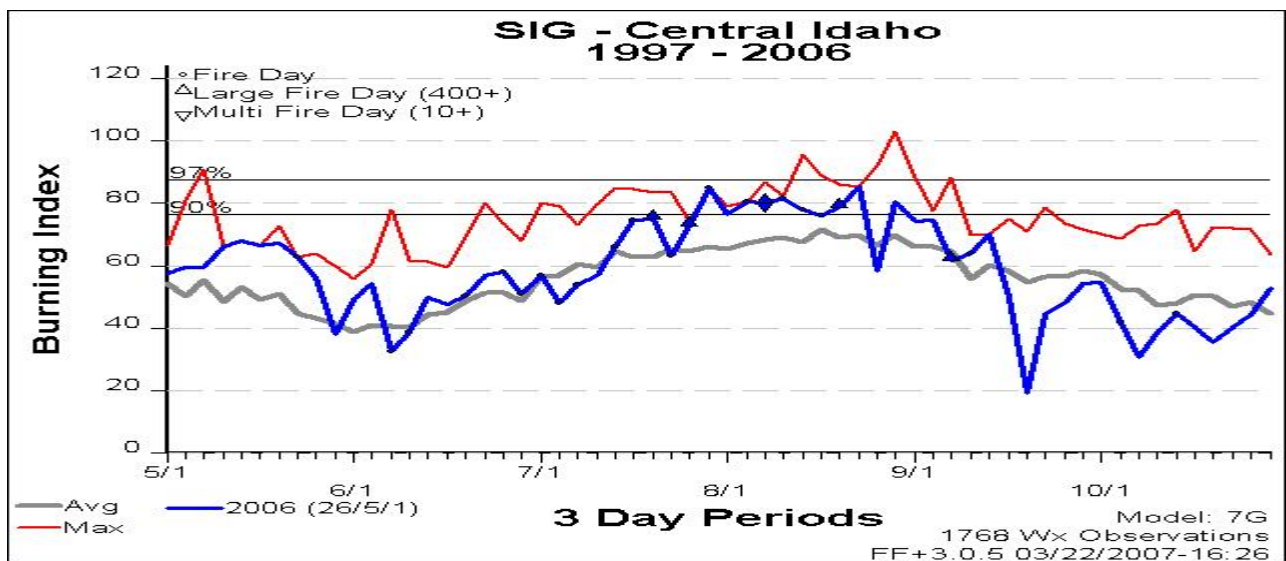
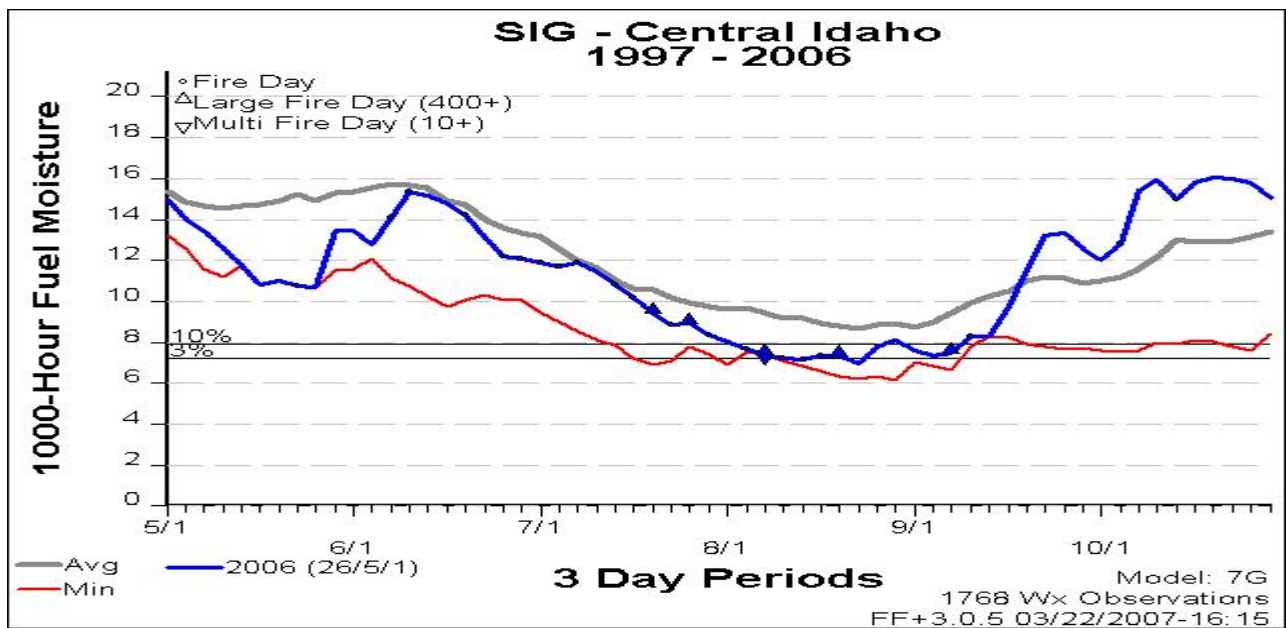
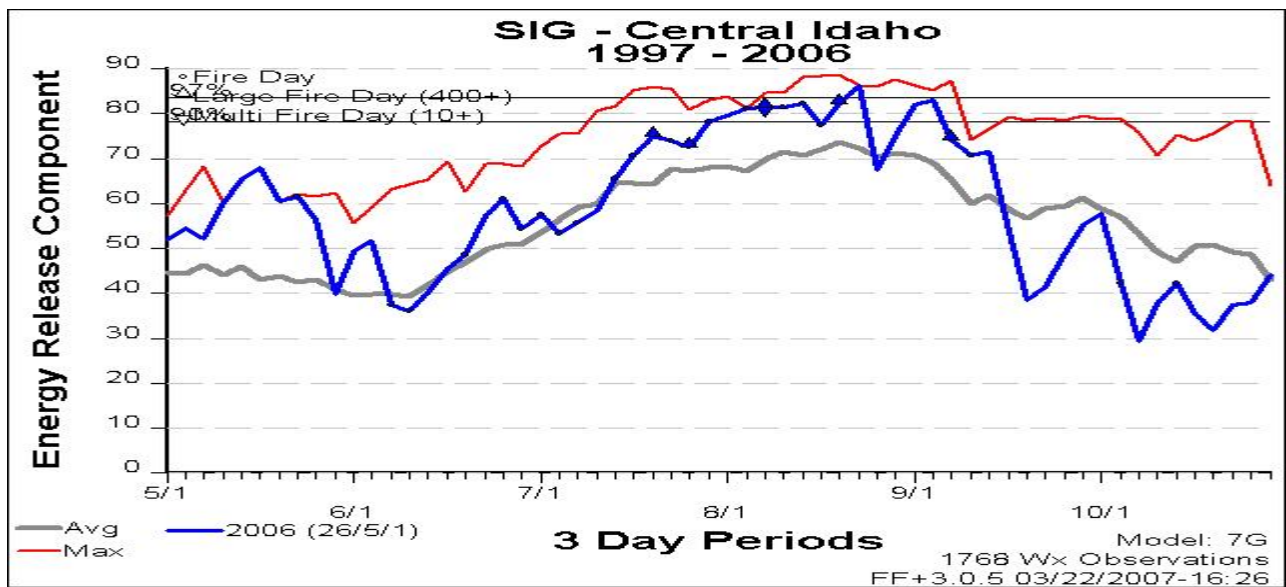
	Resource Mobilized (Off Unit)		Resources Requested Outside local area	
	Requested	Filled	Requested	Filled
Overhead	25	13	325	294
Equipment	7	6		
Crews				
Supplies				

Seasonal Weather and Severity

Central Idaho had near normal indices for most of the year except May and August where slightly higher conditions existed for BI's and ERC's.

Salmon Basin 2006 Snowpack Graph (22 Sites)







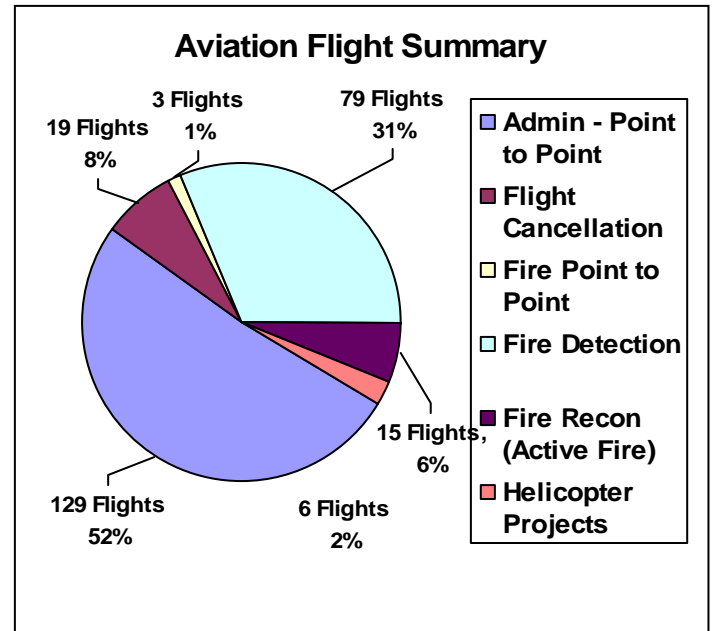
Aviation Summary

The Salmon Challis NF remains one of the top three units for processed flight invoices. Overall, the Salmon-

Challis NF has declined about 1,000 invoices compared to 2003.

The chart on the right shows the Central Idaho Dispatch use for flight following use request for 2006 (IA fire dispatches excluded). 260 flight requests were made to the dispatch aviation desk, of which 52% were for point to point non-fire fixed wing flights.

Overall, the Salmon-Challis NF resources transported 4,588 passengers and 740,490 pounds of cargo for fire and non fire missions for 2006.



Fixed-Wing

Fixed-Wing Flight accounts for a great deal of transportation of recreational and fire detection flights on the Salmon-Challis. Three main vendors are utilized: In Salmon we have Salmon Air Taxi, and McCall Aviation. In Challis we have Middle Fork Aviation.

User	Total Flights	Crew & Pax	Cargo (LB)	Flight Hours	Flight Cost	Total Cost
Fire	XX	164	6575	247.09	\$76,410	\$78,618
Administrative	XX	360	34,810	180.78	\$56,435	58,095
TOTAL	XXX	524	41,385	427.87	\$132,845	136,713



Helicopter:

The Salmon Challis contracted two exclusive-use Type III helicopters, one Type II helicopter and hosted one national Type 2 helicopter.

Helicopters transported almost 4,000 passengers and 700,000 pounds of cargo in 2006 (CY).

Helicopter	Rappel Missions (operational)	Cargo Let-Downs	Personnel Transported	Cargo Transported (LB)	Water Dropped (Gal.)	Flight Hours	Flight Cost	Total Contract Cost
H401 (7NA Indianola -T3	10	15	532	47,146	136,005	128.2	\$104,050	324,477
H-405 (6HE) Challis - T3	28	14	728	100,705	26,274	182.5	\$143,150	357,883
H-402 (361) Moyer - T2	11	20	732	284,711	105,253	175.1	\$248,512	401,513
H-404 (224HT) National -T2	23	12	1,978	266,543	461,484	351.1	XXX	512,951
Totals*	72	61	3,970	699,105	729,016	837	\$495,712	\$1,596,824

*Source: Managers Reports



Idaho Fish & Game Flight Following

Idaho Fish & Game for flight following flight represent a large portion of dispatch aviation activity for the year. This is done under an agreement between the Forest, Salmon BLM and Idaho Fish and Game.

<i>Start Date</i>	<i>Project Name</i>	<i>Days Flight Followed</i>
01/23/2006	F&G Telemetry Flights	79
01/25/2006	F&G Big Game Survey	27
02/18/2006	F&G Payette Big Game	1
06/09/2006	F&G Elk Capture	5
07/17/2006	F&G SMN-79U	1
09/05/2006	Chinook Salmon Spawning	2
09/07/2006	Salmon Redd Survey	5
12/06/2006	F&G Big Game Survey	8
Total Days of Flight Following: 128 days		
Flight Following for 35 % of the year.		

Aviation Additions to add for 2007

Talk w/ Helitack about summary rappel missions:

- Number of Rappel Fires
- Number of Fire on (IA)
- Number of Persons Rappelled Fires (IA)

SUGGESTED ADDITIONS FOR 2007:

5100-9 acre corrections

Add customs snotel graph w/ just area sites represented

Personnel Employed on Wildfire Pre Suppression and Suppression Activities	Unit: Salmon -Challis Calendar Year 2006	
	Subtotal	Total
1. Regular appointed personnel		
a. Full time fire management (20 pay periods or more)	20	
B. Part time fire management	33	
C. Others used on pre suppression sometime during the year	0	
D. Others used in suppression (excluding a, b, and c)	50	
E. Total (a + b + c + d)	103	103
2. Seasonal or short term personnel		
A. Regular fire control (crews, patrol, lookouts, etc..)	63	0
B. Others (BD, KV, BR, R&T, etc.) Some time on fire work	0	0
C. Emergency firefighters (exclude those under a or b)	180	0
D. Total (a + b + c)	449	449
3. Total number of casuals employed on fire suppression (each reemployment counts as an employment)	0	219
4. Number of casuals (included in item 3) employed for the first time (an Estimate is adequate)	56	0
5. Grand Total (1e + 2d + 3)		777

11. Form FS-5100-9, Land Ownership Protection Report

USDA-FOREST SERVICE							Calendar Year 2006		
LAND OWNERSHIP PROTECTION REPORT (Summary of acres by states)							Region R-4 Salmon Challis NF		
STATE	INSIDE FOREST SERVICE PROTECTION BOUNDARIES							S&P LAND PROTECTED by STATE and FS	National Forest Land Protected Others
	PROTECTED BY THE FOREST SERVICE								
	State and Private Land				Other Federal	N F Land	Total		
	Fee Basis	Offset Basis	Reimburse Suppression	Without Reimbursement					
Salmon/Challis NF	0	0	0	0	0	4,400,000	4,400,000		
	0	0	0	0	0	0	0		
	0	0	0	0	0	0	0		
	0	0	0	0	0	0	0		
	0	0	0	0	0	0	0		
Total	0	0	0	0	0	4,400,000	4,400,000		

FOR 2007 REPORT

- Acres by District
- Acres by Ownership
- Size Class Summary A-G
- TRENDS: USFS/ BLM last 20 years
- WEATHER/ CLIMATE: Prcipitation track... Challis, Salmon, Stanley.... RAWs during summer
- WEATHER/ CLIMATE: Snowtel
- Resource Order Summary: Resources In/ Out
- Confirmation of Acres Breakdown in 5100-9
-