

# MOUNTAIN - FIRE DANGER RATING AREA = FIRE DANGER POCKET CARD

Salmon-Challis National Forest  
Salmon and Challis Field Offices, BLM  
Weather Zone 475

SIG: FDRAM - Bonanza, Indianola, Little Creek, Skull (equal weighting)

\*All stations comply with NWCG weather standards

Created on 6/22/2018 by Central Idaho Fire Center

Adjective	Index Range	Preparedness Level*	Response Level	Historic Large Fire Occurrence
Extreme	5-Day Avg ERC 74+	5	3 - (BI 62+)	33%
Very High	5-Day Avg ERC 63-73	4	2 - (BI 45-61)	40%
High	5-Day AVG ERC 48-62	3	1 - (BI 0-44)	21%
Moderate	5-Day AVG ERC 32-47	2		6%
Low	5-Day AVG ERC 0-31	1		0%

* Preparedness Level	Additional considerations are applied to set actual Preparedness level. (Current and predicted weather, fire activity, resource draw down, etc.)
Maximum	Highest Energy Release Component by day
Average	Mean Energy Release Component by day
90 <sup>th</sup> Percentile	Only 10% of days had an Energy Release Component above this level
Large Fire	A fire with a final size >20 acres

## REMEMBER – What Fire Danger tells you:

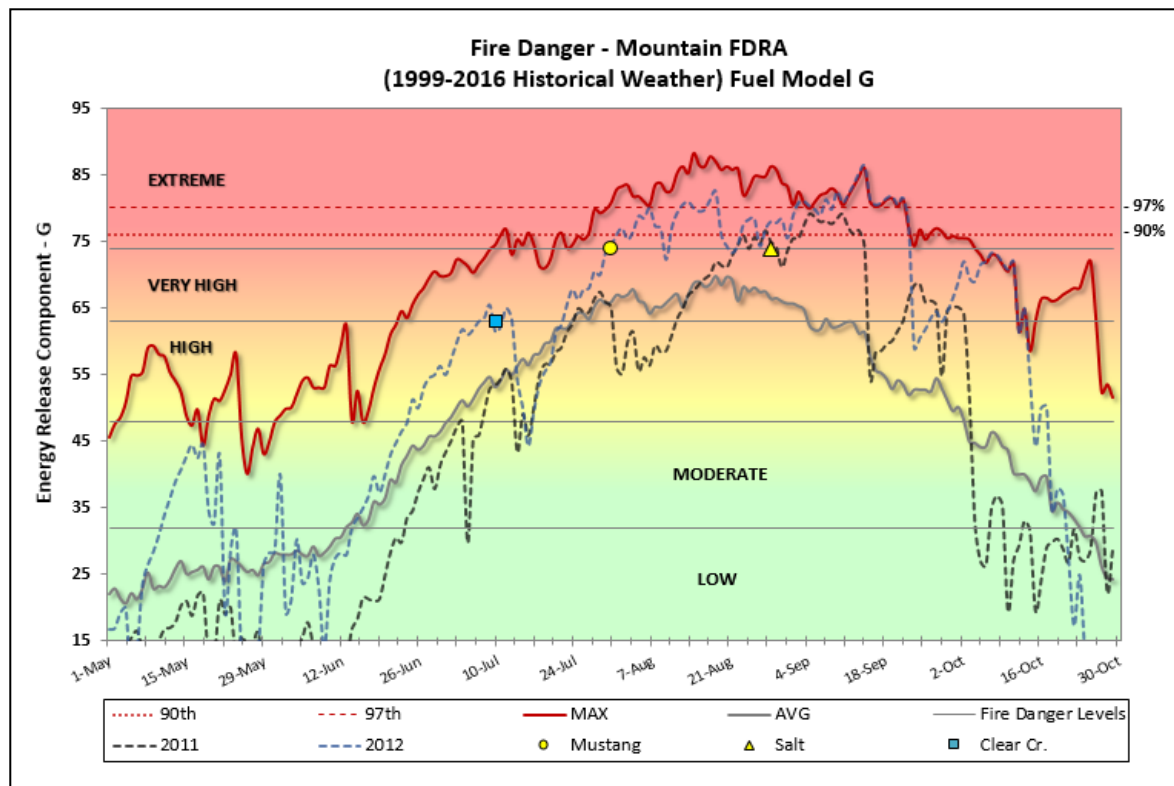
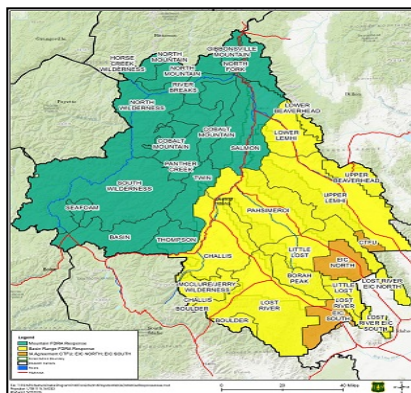
- Energy Release Component (ERC) gives seasonal trends calculated from 1300 temperature and humidity, daily temperature and relative humidity (RH) ranges, and daily precipitation duration
- Wind is NOT part of the ERC calculation.
- Burning Index (BI) IS very reactive to WINDY conditions.
- Pay attention to local conditions and variations across the landscape; Fuel, Weather, and Topography.
- Listen to weather forecasts, especially WIND and Minimum RH.
- Drainages may be susceptible to local winds, especially when in alignment.
- Fire Danger is calculated for the driest and most exposed part of the Area and is intended to provide the current worst case scenario.

## LOCAL THRESHOLDS – Historically large fires occurred under the following conditions:

- Relative Humidity less than 15%.
- 20-foot Wind Speed greater than 10 mph.
- Temperature greater than 80 degrees.
- 1000-hour fuel moisture less than 10%.

## WATCH OUT – When dry fuels are combined with any of the following:

- Alignment of Wind and Slope.
- Dry Cold Front Passage – Strong winds combined with Low Relative Humidity.
- Haines Index of 5 or 6.



## Past Experience:

**SALT: 08/29/2011.** On this afternoon the Salt fire made a significant run forcing personnel and equipment to their safety zone. Conditions: ERC 74; BI 82; Winds WSW @ 20-28 with gusts to 45mph, RH 15%; Temp 75°; 1,000-hr FM 7%.

**MUSTANG: 7/30/2012.** Burned throughout the summer making large runs on several days. Conditions for some of those days:  
7/30: ERC 74 ;BI 79; Winds SW @ 8 with gusts to 15-20; RH 6%; Temp 96°; 1,000-hr FM 8%  
8/13: ERC 81 ;BI 73; Winds SW @ 5 with gusts to 10-15; RH 7%; Temp 100°; 1,000-hr FM 6%  
9/10: ERC 81 ; BI 91; Winds WSW @ 10 with gusts to 20-25; RH 11%; Temp 86°; 1,000-hr FM 6%