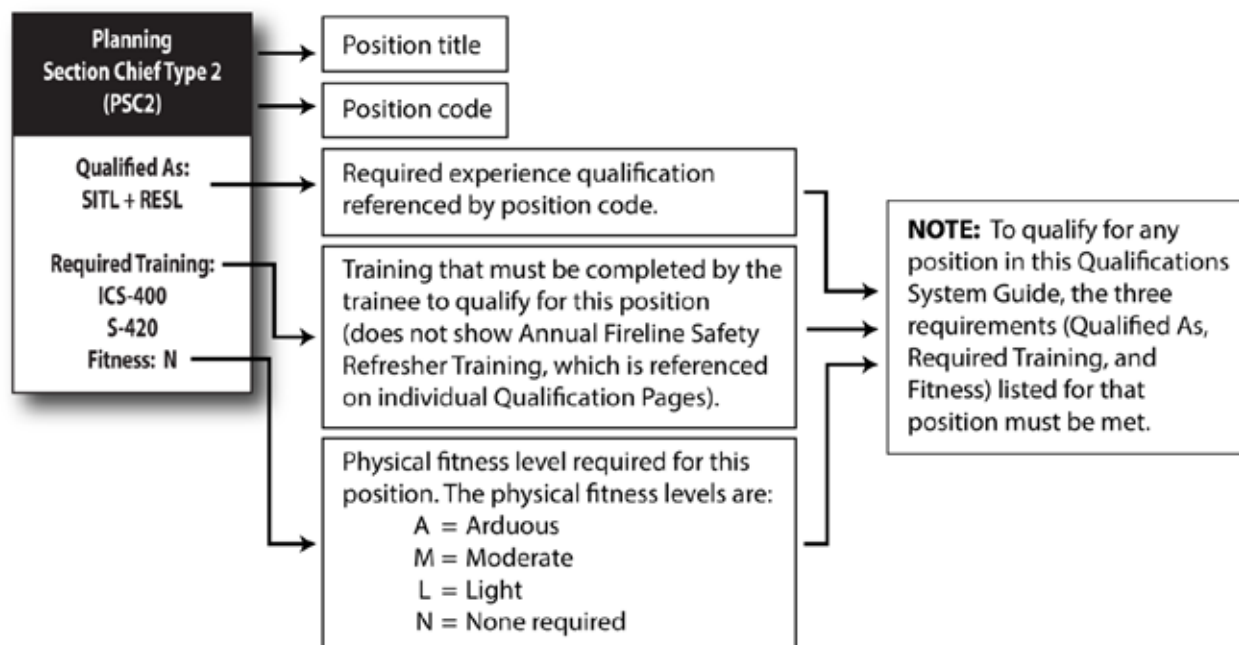


POSITION QUALIFICATION FLOWCHARTS

The flowcharts shown on the following pages *are not* Incident Command System (ICS) chain of command organization charts.

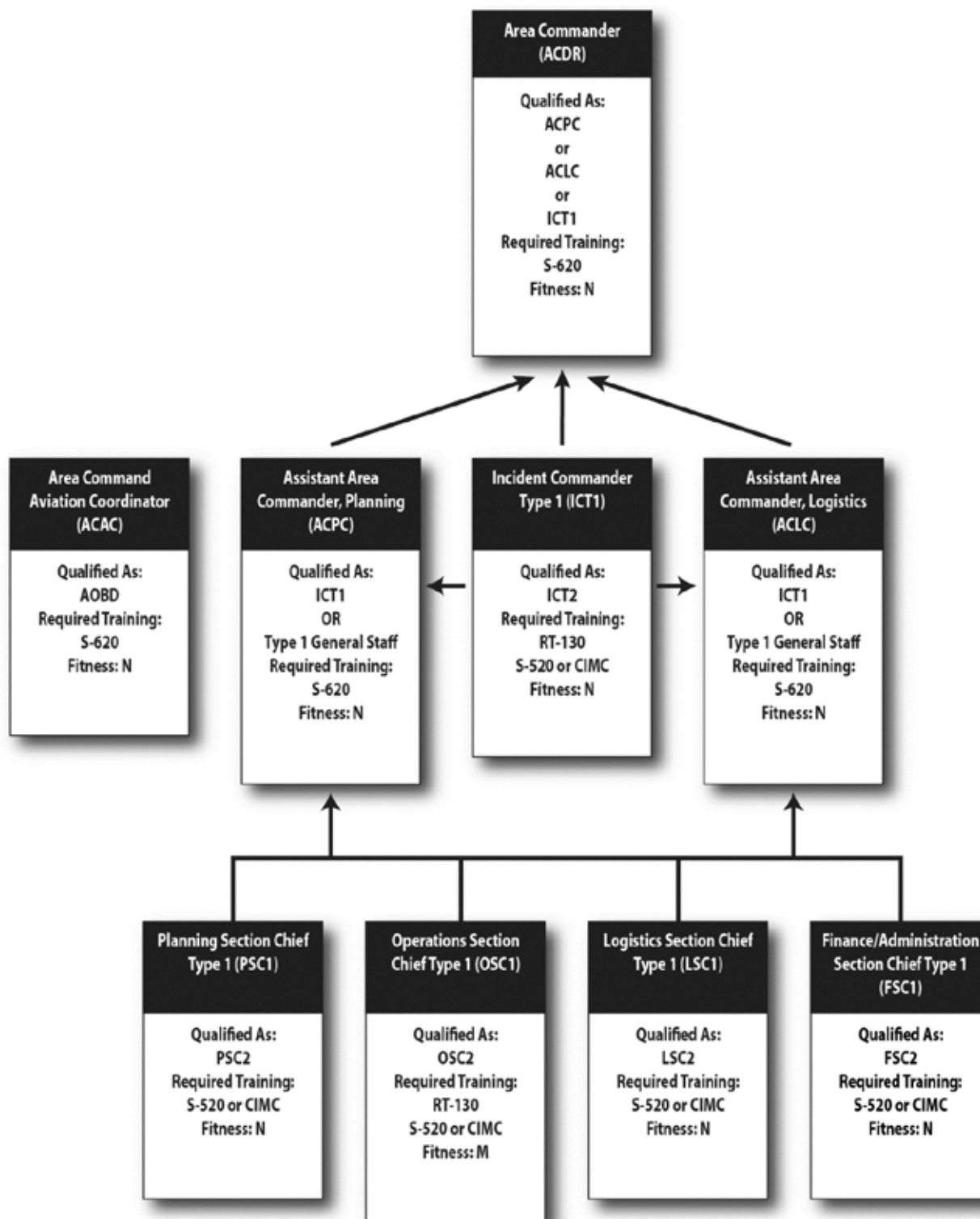
The position qualification flowcharts presented in this section show the progression from one wildland fire position to another within the wildland fire qualification system. (For detailed information about a specific position, refer to the qualification page for that position, which is located in the Qualifications section of this document).

Below is an example of a position and its requirements as shown on the qualification flowchart. The example shows the position title, position code, and the required experience (Qualified As), required training, and fitness level required for a trainee to qualify for that position.



AREA COMMAND

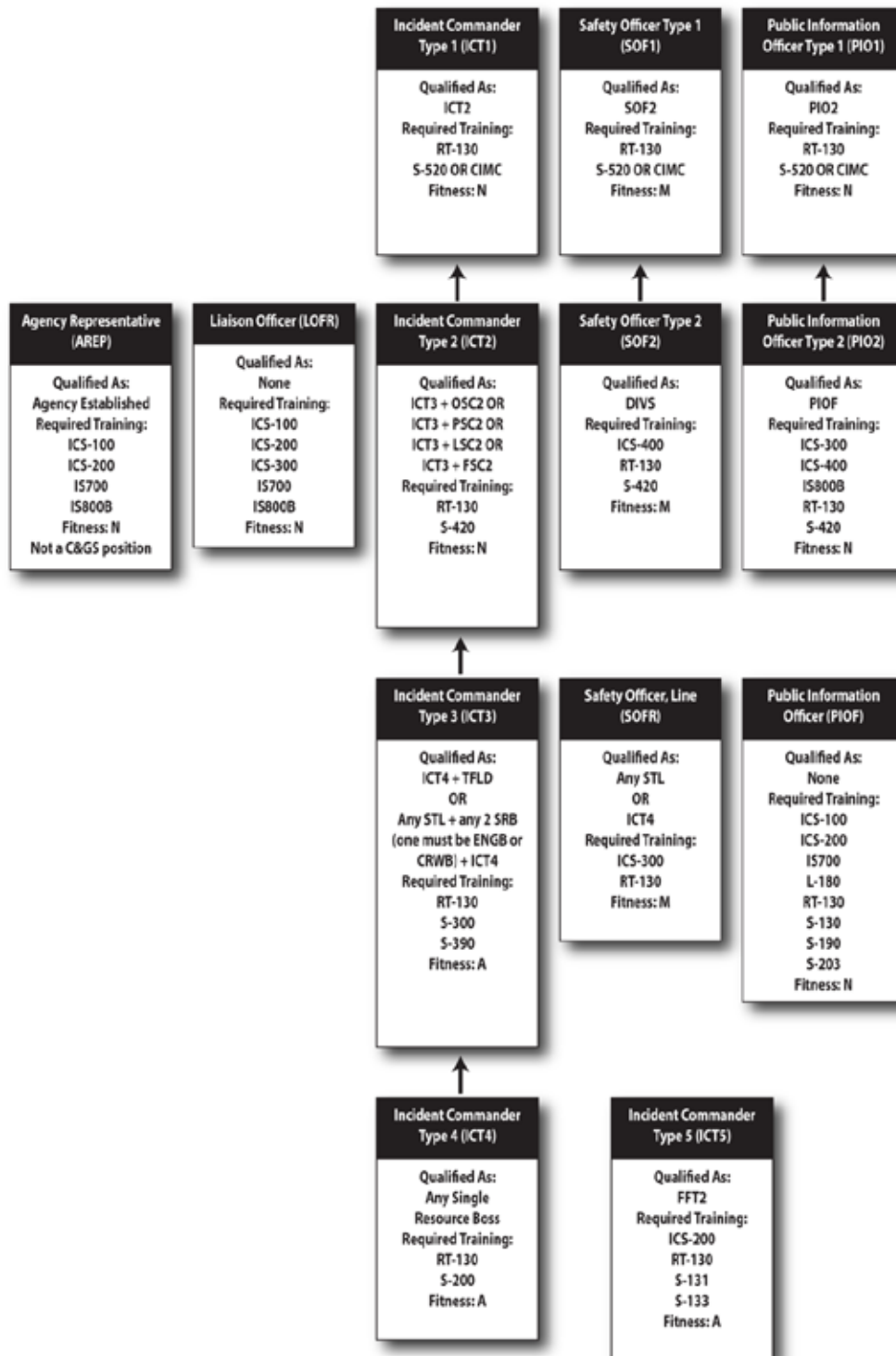
This is not an ICS chain of command organization chart.



The FS Required Training listed is in addition to the NWCG Required Training listed in the PMS 310-1.

COMMAND AND GENERAL STAFF

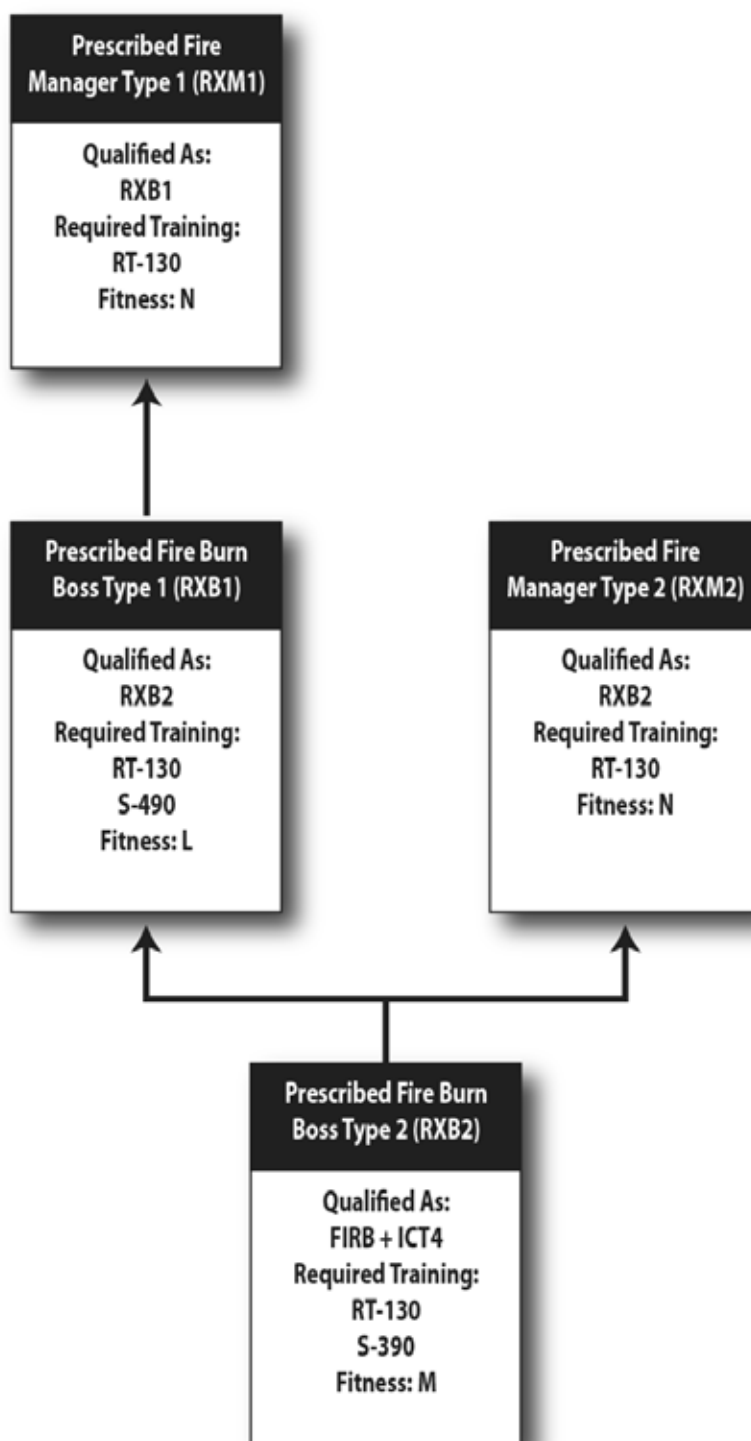
This is not an ICS chain of command organization chart.



The FS Required Training listed is in addition to the NWCG Required Training listed in the PMS 310-1.

PRESCRIBED FIRE

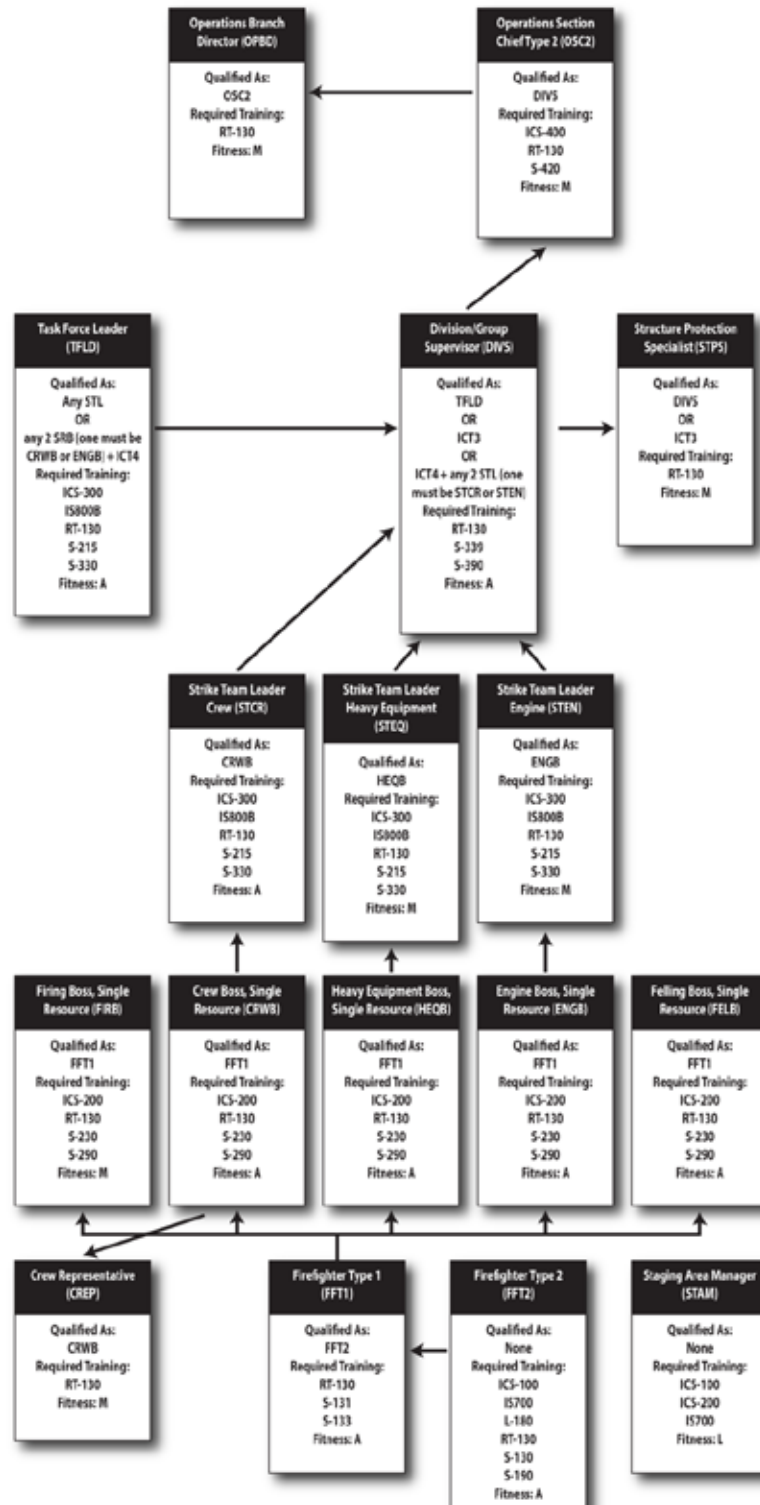
This is not an ICS chain of command organization chart.



The FS Required Training listed is in addition to the NWCG Required Training listed in the PMS 310-1.

OPERATIONS

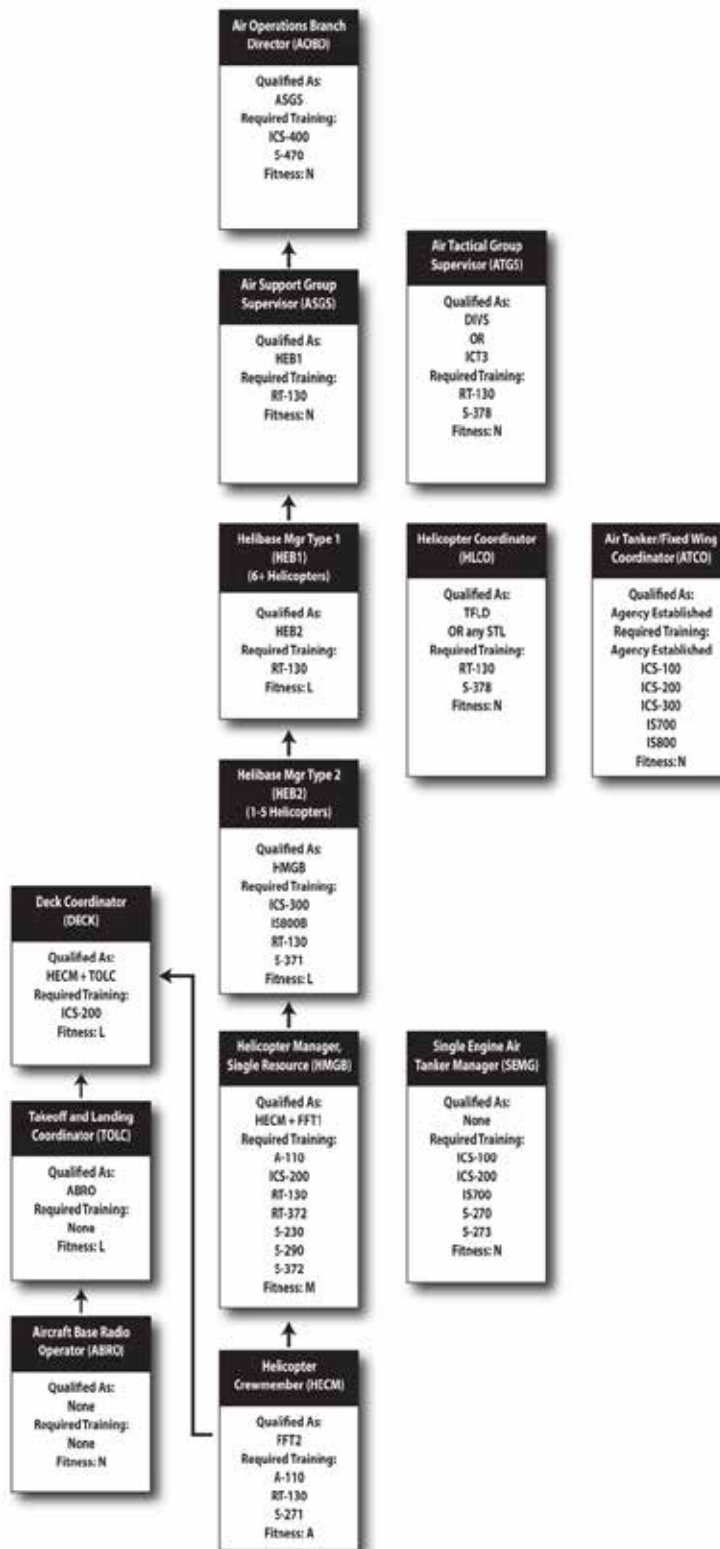
This is not an ICS chain of command organization chart.



The FS Required Training listed is in addition to the NWCG Required Training listed in the PMS 310-1.

AIR OPERATIONS

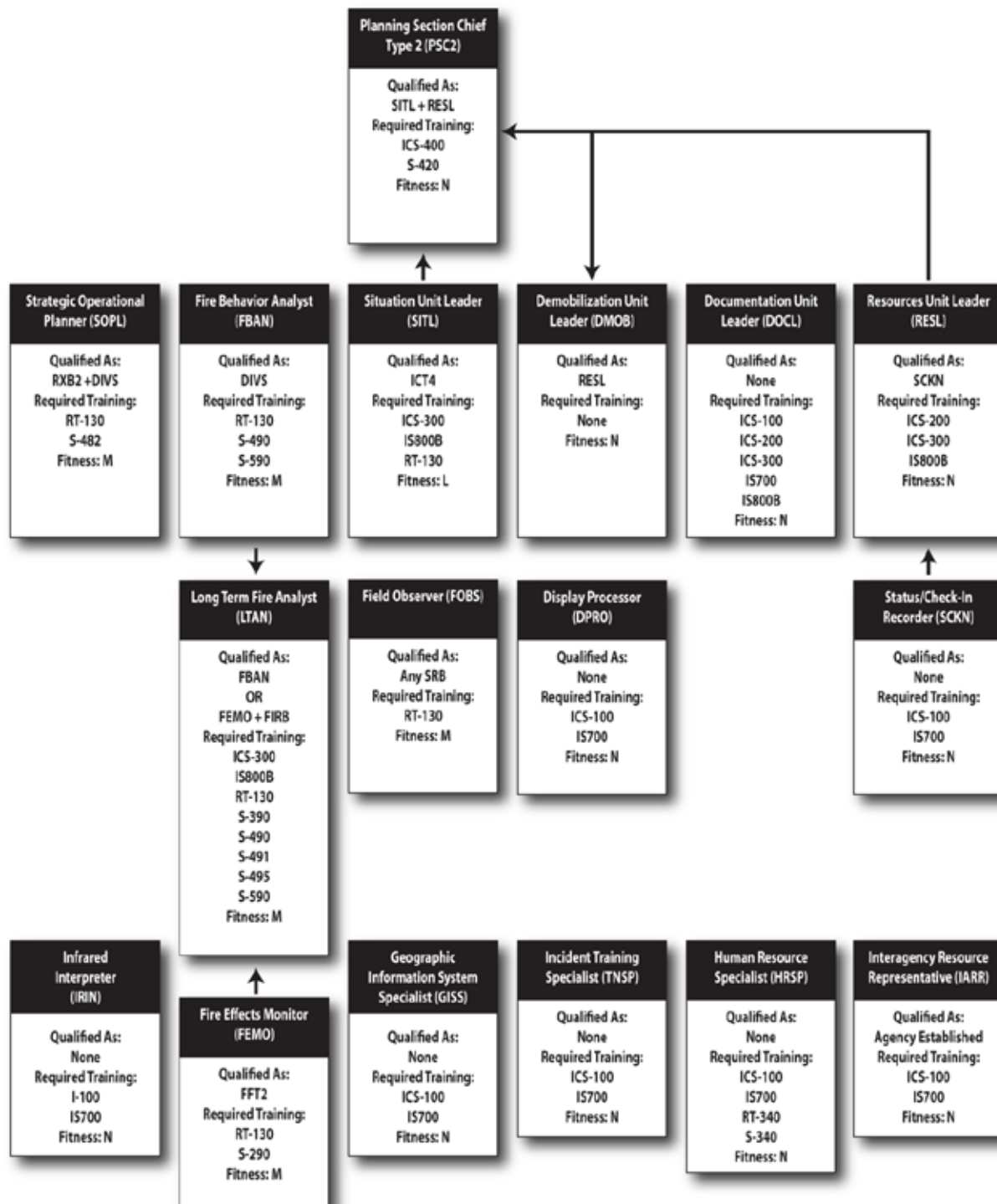
This is not an ICS chain of command organization chart.



The FS Required Training listed is in addition to the NWCG Required Training listed in the PMS 310-1.

PLANNING

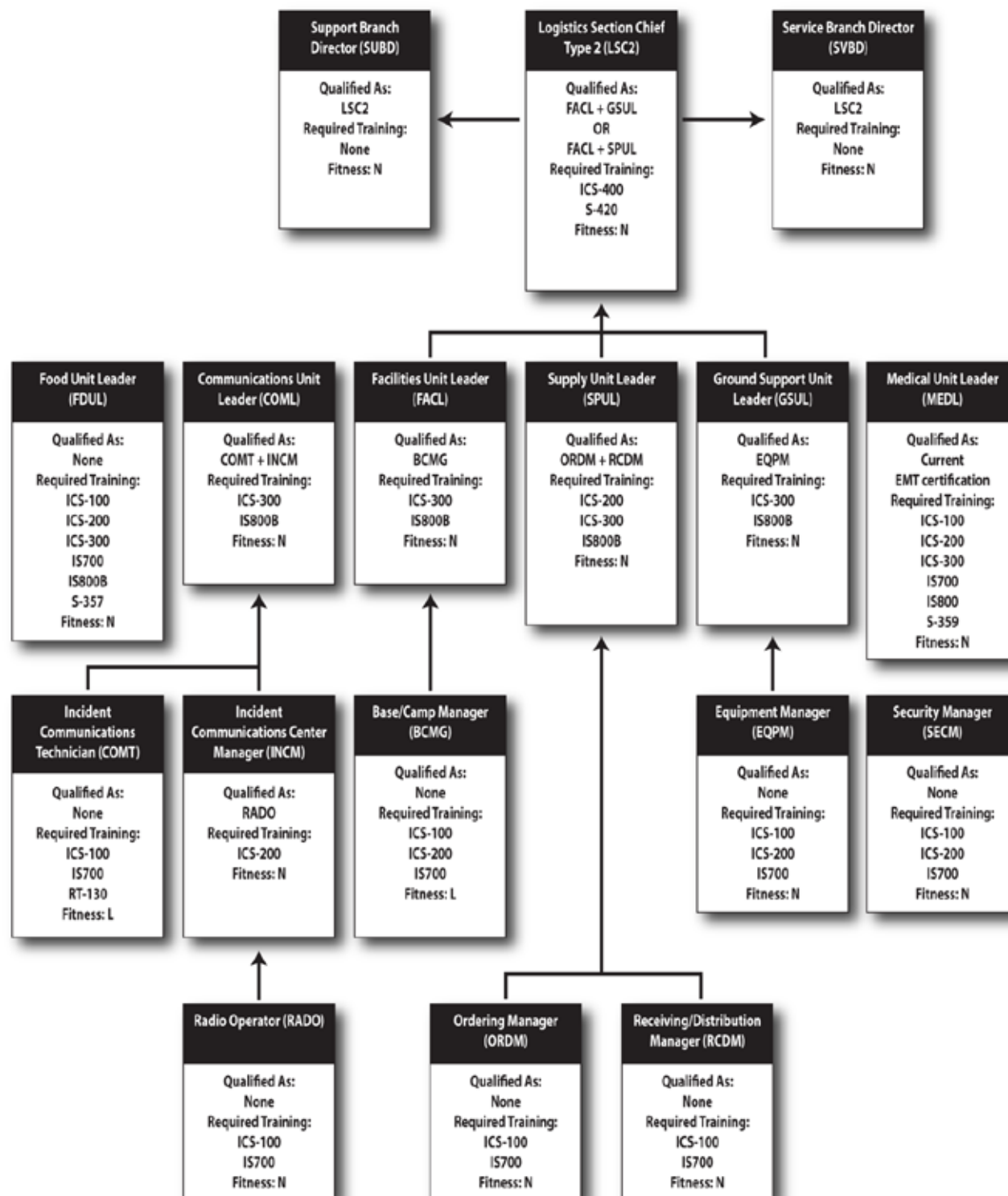
This is not an ICS chain of command organization chart.



The FS Required Training listed is in addition to the NWCG Required Training listed in the PMS 310-1.

LOGISTICS

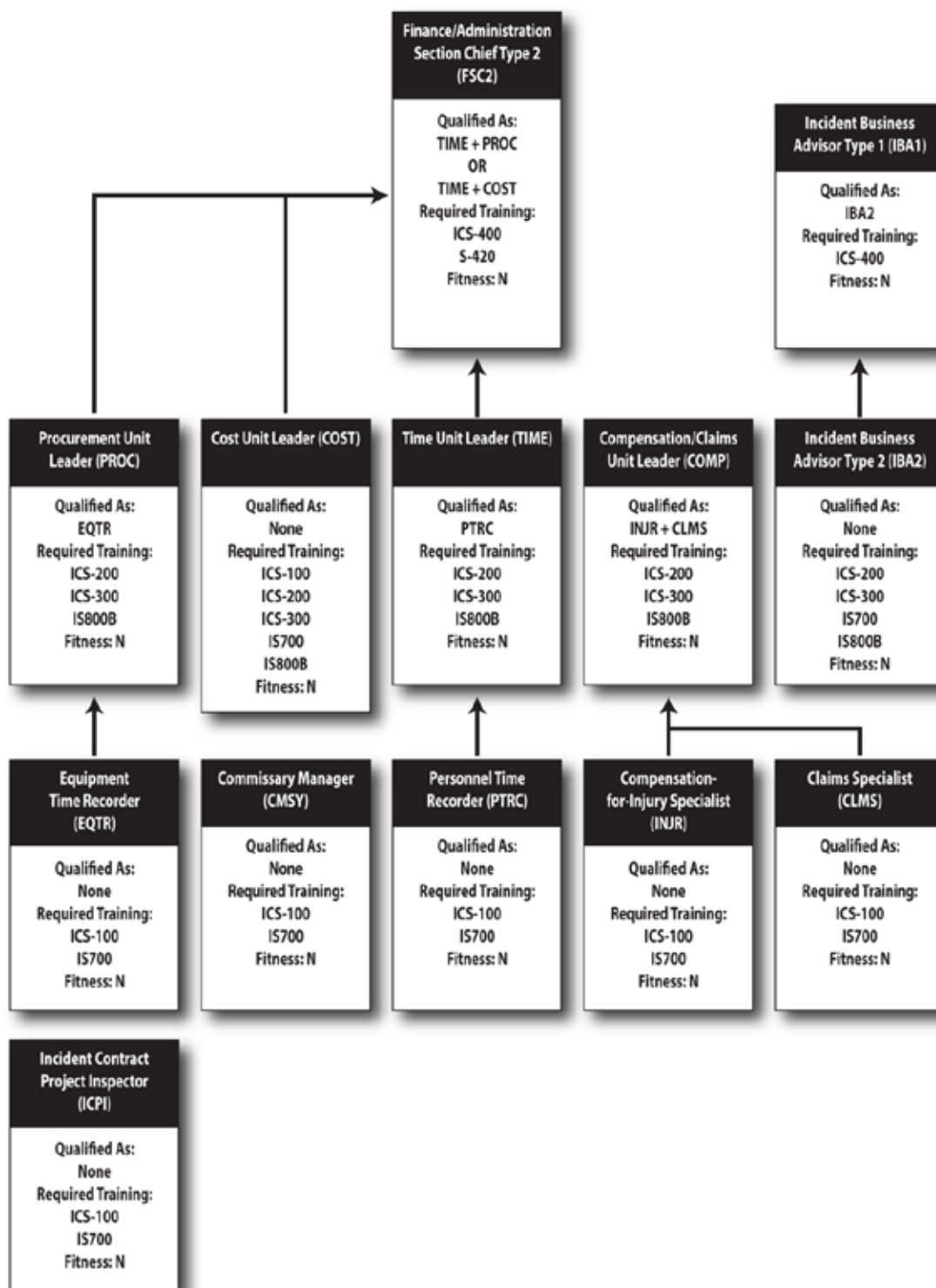
This is not an ICS chain of command organization chart.



The FS Required Training listed is in addition to the NWCG Required Training listed in the PMS 310-1.

FINANCE/ADMINISTRATION

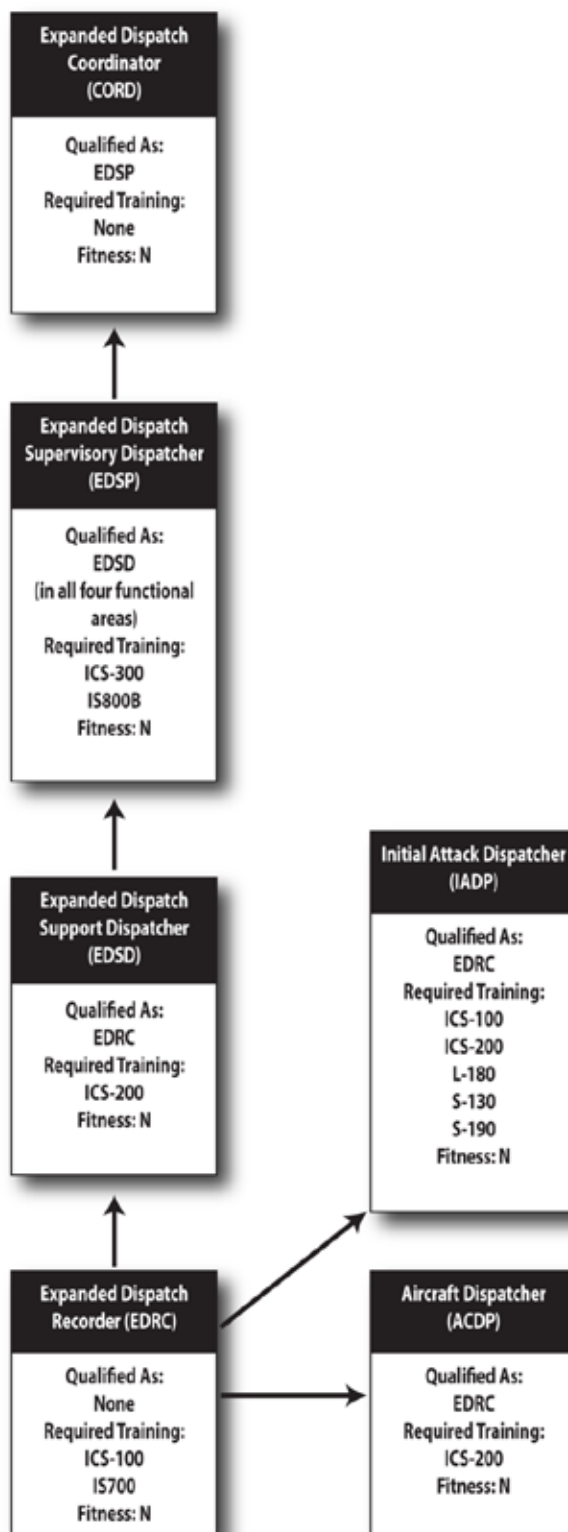
This is not an ICS chain of command organization chart.



The FS Required Training listed is in addition to the NWCG Required Training listed in the PMS 310-1.

DISPATCH

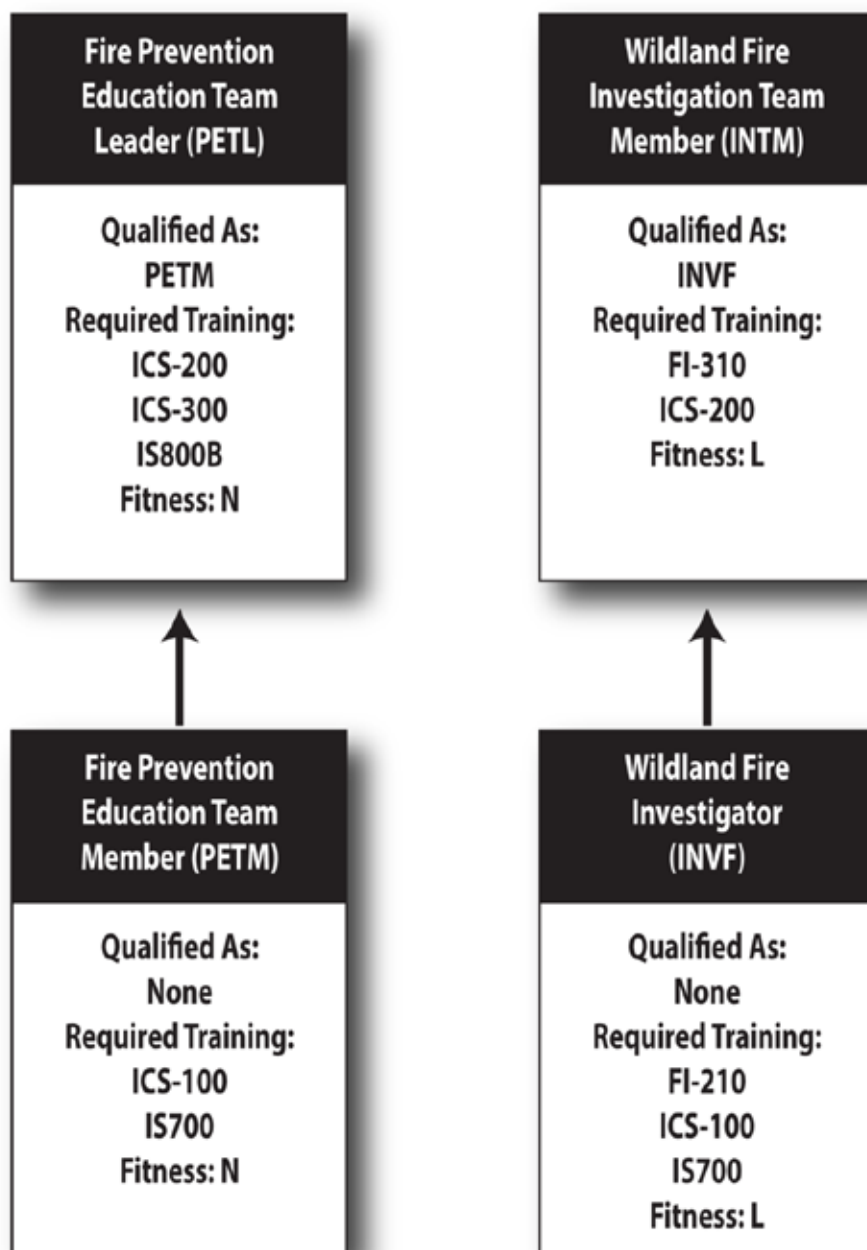
This is not an ICS chain of command organization chart.



The FS Required Training listed is in addition to the NWCG Required Training listed in the PMS 310-1.

PREVENTION AND INVESTIGATION

This is not an ICS chain of command organization chart.



The FS Required Training listed is in addition to the NWCG Required Training listed in the PMS 310-1.