

# Boise District Cooperator Fire Protection

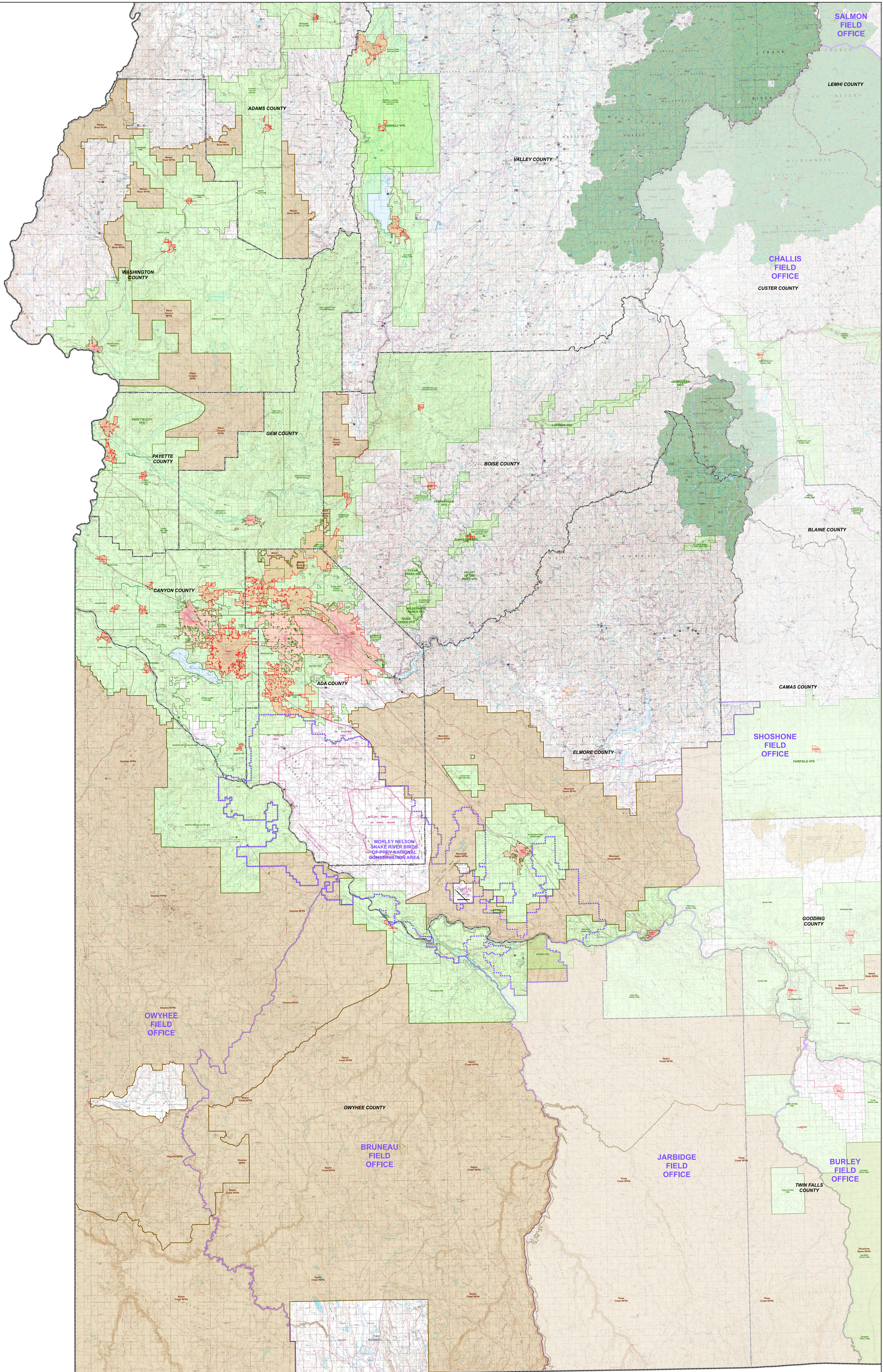
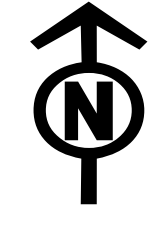
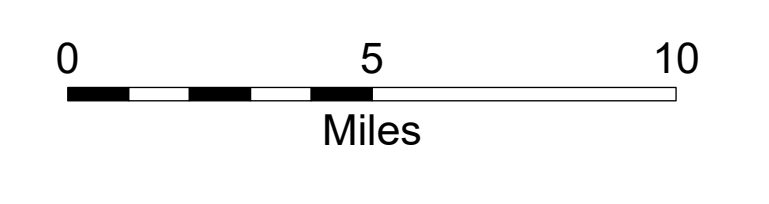


U.S. Department of the Interior  
Bureau of Land Management, Idaho  
Boise District Office  
Jun 17, 2024

No warranty is made by the Bureau of Land Management. The accuracy, reliability, or completeness of these data for individual use or aggregate use with other data is not guaranteed. Map projection: UTM 11 NAD 1983. Data sources: Idaho BLM Corporate Database

**Legend**

- City Fire Dept 2024
- Rangeland Fire Protection Assoc.
- Rural & Volunteer Fire Dept 2024
- Field Office Boundary
- County



SALMON  
FIELD  
OFFICE

LEMHI  
COUNTY

CHALLIS  
FIELD  
OFFICE

CUSTER  
COUNTY

BLAINE  
COUNTY

CAMAS  
COUNTY

SHOSHONE  
FIELD  
OFFICE

GOODWIN  
COUNTY

OWYHEE  
FIELD  
OFFICE

OWYHEE  
COUNTY

BRUNEAU  
FIELD  
OFFICE

JARBIDGE  
FIELD  
OFFICE

BURLEY  
FIELD  
OFFICE

TWIN FALLS  
COUNTY