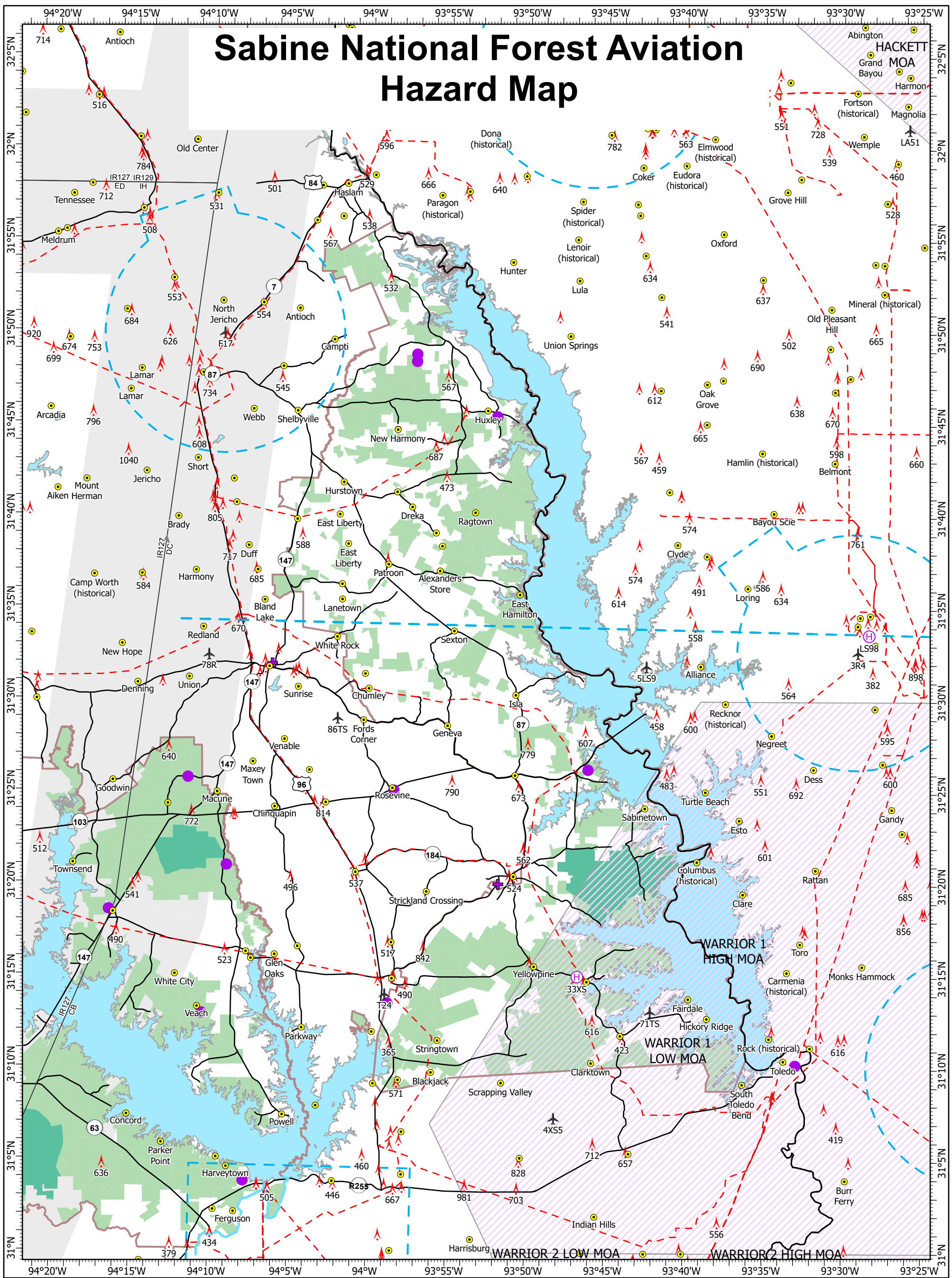


Sabine National Forest Aviation Hazard Map



- Airport
- Heliport
- Helispot
- Hospital
- Populated Places
- Towers AGL
- Airport Airspace
- Military Flight Routes
- River
- Roads
- Transmission Lines
- Administrative Boundary
- Forest Service
- Wilderness
- MTR Corridors
- Military Operations Area
- Water Body

Level one Trauma Center AND Burn Unit:
Memorial Hermann - Texas Medical Center
 29° 42.798000' N, 95° 23.754000' W
Parkland Memorial Hospital TE43
 32° 48.585667' N, 96° 50.370000' W

Level one Trauma Center ONLY:
Harris Health System Ben Taub Hospital
 29° 42.633667' N, 95° 23.594333' W

Methodist Dallas Medical Center XA62
 32° 45.628833' N, 96° 49.464000' W

Baylor University Medical Center at Dallas XA61
 32° 47.299833' N, 96° 46.806000' W

This map was produced by the Sam Houston National Forest on 11/18/2024. GIS data and product accuracy may vary. This map is not to be used for navigational purposes. It is only to be used as a supplemental means of identifying vertical obstructions and other known hazards. The Davy Crockett National Forest reserves the right to update, modify, or replace any or all this data without notifying users. For more information, contact: Supervisor's Office NFGT 936-639-8501.

Note to Pilots and Cooperating Agencies: Not all aerial wires, cableways, and obstructions that could be hazardous to aircraft are shown on this map. Please use extreme caution when flying in unfamiliar areas.

1:360,000

0

2.25

4.5

9

Miles

0

1.5

3

6

9

12

Nautical Miles