

SEASONAL OUTLOOK

National Report
Located Here

For Southern and Central California

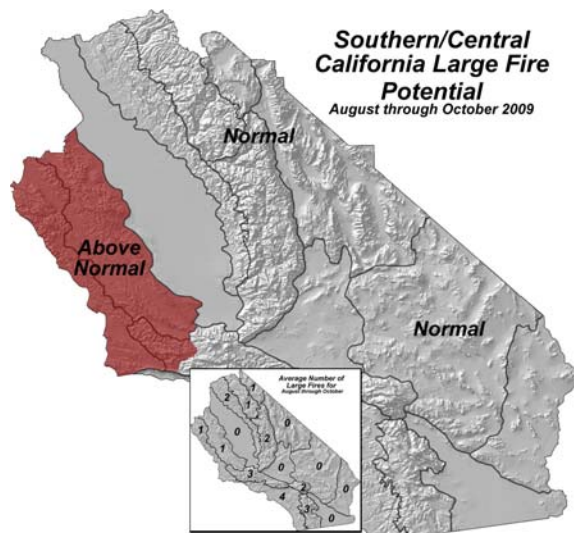
Issued: July 1, 2009

Valid for: August - October 2009

Weather Discussion

Over the last few months, sea surface temperature anomalies across the tropical Pacific region have been increasing with an El Niño pattern currently taking shape. This warming trend in sea surface temperatures is expected to continue into the winter months with possibly a moderate El Niño event developing by the end of the year. Local studies have shown little correlation between the onset, duration, and intensity of precipitation events in the fall months (Sep-Nov), with respect to El Niño years. Nor are there any strong correlations relating the frequency and intensity of offshore wind events with an El Niño pattern. However, there *is* a good relation to above normal *winter* precipitation with moderate to strong El Niño events, so there is a growing confidence that the region may see above normal rainfall amounts late this year and into early 2010.

In the meantime with El Niño developing, this may lead to a stronger than normal trough over the eastern Pacific with high pressure further east than normal, over the central United States. Recent meteorological trends as well as medium range models seem to support this scenario. Should this be the dominate upper-air pattern during the August through October period, we would therefore expect an eastward shift in the summer monsoon with fewer than normal thunderstorm episodes over the mountains and deserts. Also, temperatures will likely be near normal over most of the region during this time, with some wetting rains possible over the central portion of the state in October.



Summary

- Temperatures and precipitation averaging near normal.
- Current drought conditions expected to worsen.
- Above normal large fire potential for the central coast region.
- Normal large fire potential over the remainder of the Geographic Area.

Fuels/Drought Discussion

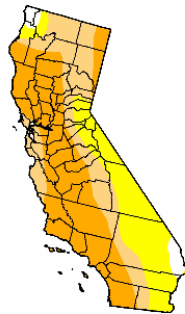
Moderate to severe drought conditions currently exist over much of southern and central California and it is likely that these conditions will worsen over the upcoming months. The long term effects of the drought will be reflected in an increase of dead

U.S. Drought Monitor California

June 23, 2009
Valid 7 a.m. EST

	Drought Conditions (Percent Area)					
	None	D0-D4	D1-D4	D2-D4	D3-D4	D4
Current	2.9	97.1	72.0	44.3	0.0	0.0
Last Week (06/16/2009 map)	2.8	97.2	72.0	44.3	0.0	0.0
3 Months Ago (03/31/2009 map)	5.2	94.8	63.8	22.5	0.0	0.0
Start of Calendar Year (01/06/2009 map)	1.7	98.3	88.2	41.3	2.8	0.0
Start of Water Year (10/07/2008 map)	0.0	100.0	95.9	55.0	0.0	0.0
One Year Ago (06/24/2008 map)	0.2	99.8	89.2	18.1	0.0	0.0

Intensity:
■ D0 Abnormally Dry ■ D3 Drought - Extreme
■ D1 Drought - Moderate ■ D4 Drought - Exceptional
■ D2 Drought - Severe

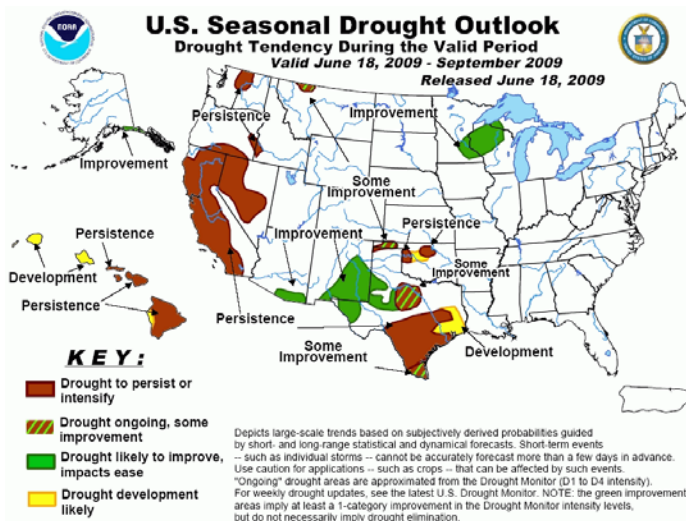


The Drought Monitor focuses on broad-scale conditions. Local conditions may vary. See accompanying text summary for forecast statements

<http://drought.unl.edu/dm>



Released Thursday, June 25, 2009
 Author: M. Brewer/L. Love-Brotak, NOAA/NESDIS/NCDC



vegetation and ultimately, larger fires exhibiting extreme fire behavior.

Across the Geographic Area, curing of the light, flashy fuels is complete up to around the four or five thousand foot level. Live fuel moisture values continue their normal downward trend which will last into October. Dead fuel moisture values continue to fluctuate based upon current meteorological conditions. Currently most of the Predictive Service Areas are running close to normal with regard to the Energy Release Components as well as the Ten, Hundred, and Thousand Hour dead fuel moistures. With the lack of abundant rainfall this past year, fuel loading is slightly less than normal, but good continuity exists in most places among the lighter fuel types.

Fire activity has been at a minimum during the past several weeks due to the persistent cool and moist weather conditions over the area. There will however be a rapid increase in fire activity throughout the region as warmer and drier weather becomes more prevalent. Above normal large fire potential will be possible through October over the central coast

region due to the existence of very dry fuels. The question will be whether or not meteorological conditions become favorable over the next couple of months to support that projection. The remainder of the region should have a normal fire season.



This Product was developed by the Predictive Services group, located at the South Zone Coordination Center in Riverside, California

Phone:
951-782-4852

Fax:
951-276-6439

E-Mail:
thomasrolinski@fs.fed.us