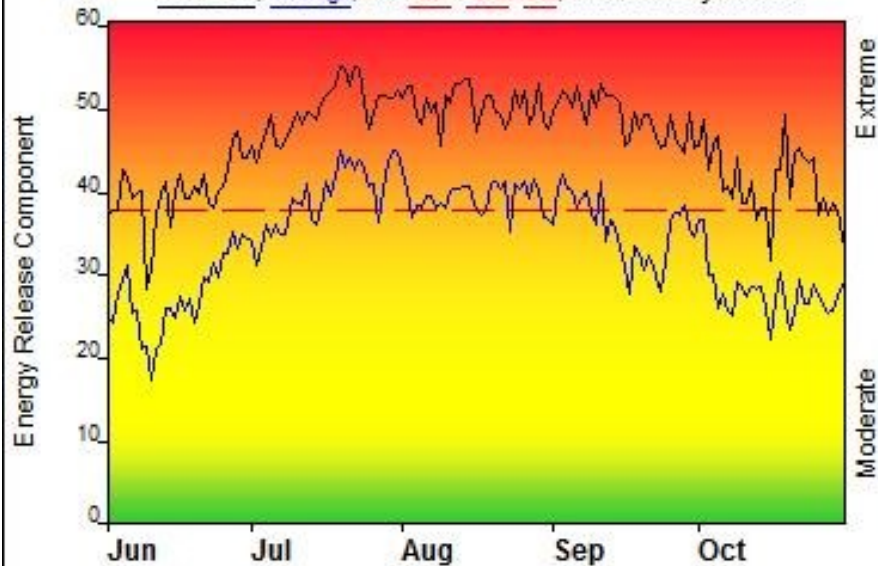


FIRE DANGER -- Helena/Townsend FDRA#2

Maximum, Average, and 58th Percentile, based on 10 years data

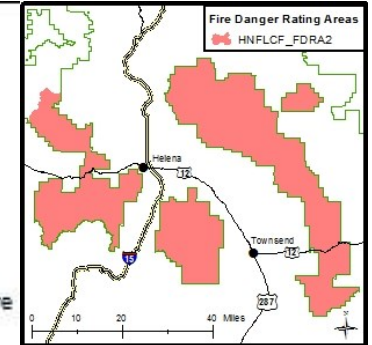


Fire Danger Area:

- ◆ Helena-L&C NF FDRA#2
- ◆ WX Zone 118
- ◆ Helena-Ginger SIG FM:U
- * Meets NWCG Wx Station Standards

Fire Danger Interpretation:

- EXTREME** -- Use extreme caution
- High** -- Watch for change
- Moderate** -- Lower Potential, but always be aware



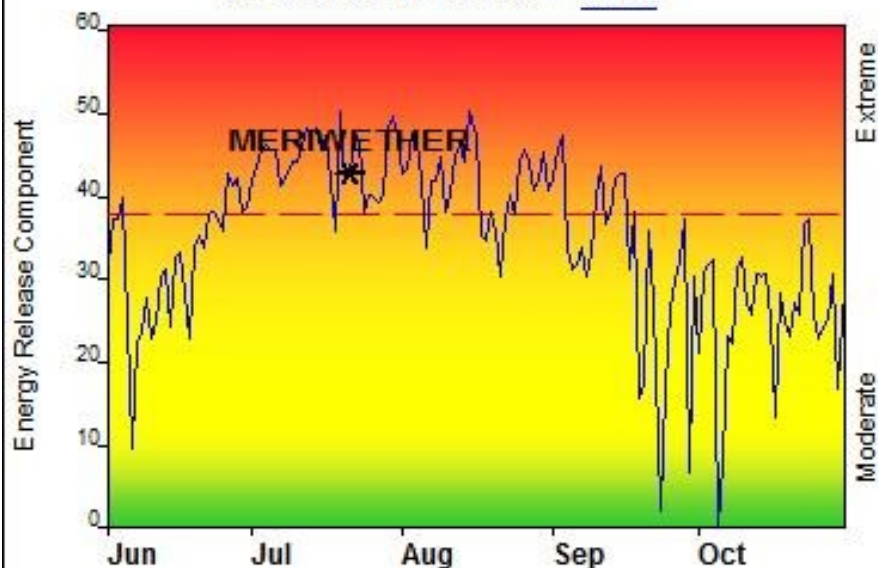
Maximum -- Highest Energy Release Component by day for 2003 - 2012

Average -- shows peak fire season over 10 years (1524 observations)

58th Percentile -- 42% of the 1524 days from 2003 - 2012 had an Energy Release Component above 38

Local Thresholds - Watch out: Combinations of any of these factors can greatly increase fire behavior:
 20' Wind Speed over 8 mph, RH less than 20%,
 Temperature over 83, Energy Release Component over 38

Years to Remember: 2007



Remember what Fire Danger tells you:

- ✓ Energy Release Component gives seasonal trends calculated from 2 pm temperature, humidity, daily temperature & rh ranges, and precip duration.
- ✓ Wind is NOT part of ERC calculation.
- ✓ Watch local conditions and variations across the landscape -- Fuel, Weather, Topography.
- ✓ Listen to weather forecasts -- especially WIND.

Past Experience:

Watch for bug killed fuel. Anticipate volatile transition from surface to crown fire with spotting that can carry fire brands two miles or more.
 The Meriwether Fire 7/21/07 burned 10,000 acres overnight when max temp where above the 58th percentile for an extended period which starts at 83 degrees.
 A very wet year in 1993 resulted in no fires larger than 1/2 acre
 Fire Wx forecasts are available at: <http://www.wrh.noaa.gov/firewx/>
 FDRA #2 consists of the Helena and Townsend RD of the Helen - Lewis and Clark NF.

Fuel Model: U - Western Pines

Responsible Agency: USFS MT - Helena - Lewis & Clark NF
 FF+4.2 build 142298 07/19/2016-15:25 (C:\Users\tscollier\Desktop\LCNHF Central FDRA2)

Design by NWCG Fire Danger Working Team