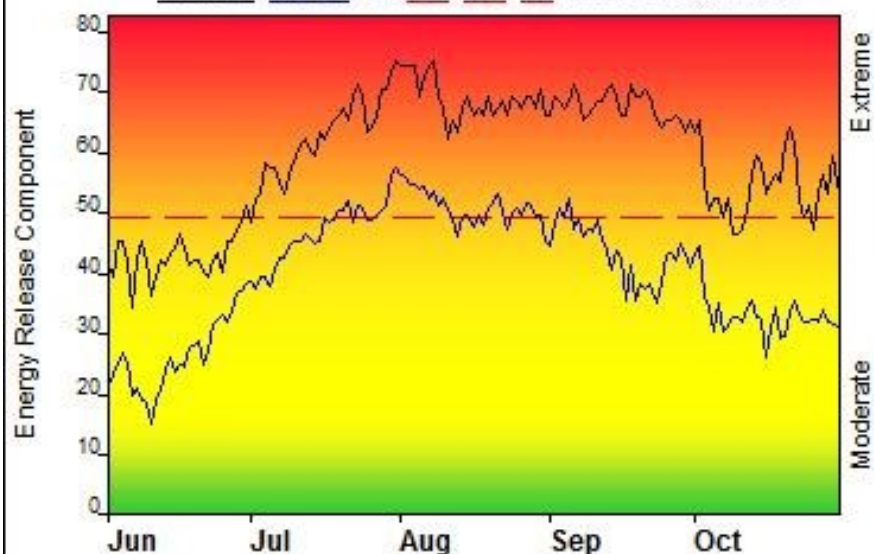


FIRE DANGER -- Lincoln/Augusta/Choteau FDRA#1

Maximum, Average, and 68th Percentile, based on 10 years data

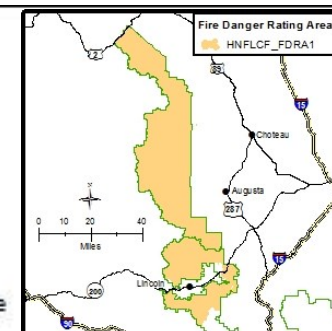


Fire Danger Area:

- ◆ Helena-L&C MT FDRA#1
- ◆ MT Fire WX Zones 114, 116
- ◆ 241802 Gleason RAWS FM:G
- * Meets NWCG Wx Station Standards

Fire Danger Interpretation:

- EXTREME** -- Use extreme caution
- High** -- Watch for change
- Moderate** -- Lower Potential, but always be aware



Maximum -- Highest Energy Release Component by day for 2003 - 2012

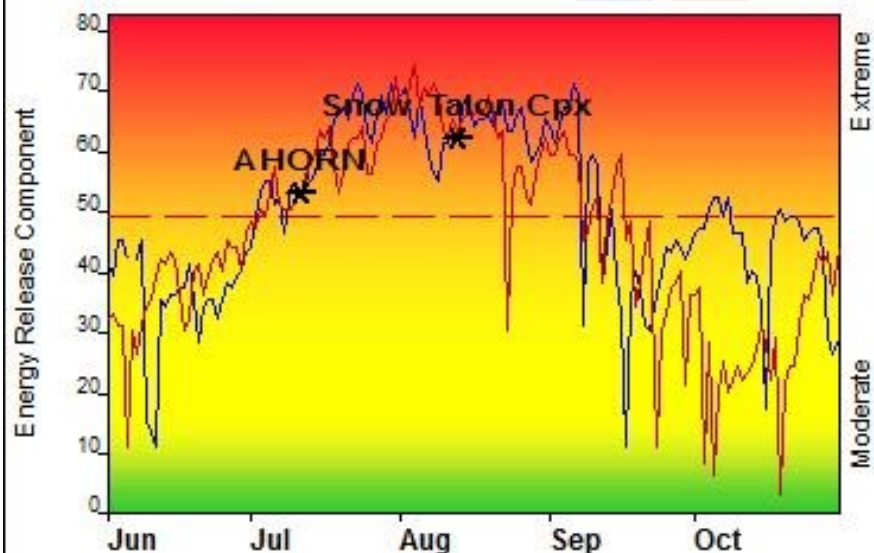
Average -- shows peak fire season over 10 years (1520 observations)

68th Percentile -- 32% of the 1520 days from 2003 - 2012 had an Energy Release Component above 49

Local Thresholds - Watch out:

Combinations of any of these factors can greatly increase fire behavior:
 20' Wind Speed over 9 mph, RH less than 19%,
 Temperature over 77, Energy Release Component over 49

Years to Remember: 2003 2007



Fuel Model: G - Short-Needle (Heavy Dead)

Remember what Fire Danger tells you:

- ✓ Energy Release Component gives seasonal trends calculated from 2 pm temperature, humidity, daily temperature & rh ranges, and precip duration.
- ✓ Wind is NOT part of ERC calculation.
- ✓ Watch local conditions and variations across the landscape -- Fuel, Weather, Topography.
- ✓ Listen to weather forecasts -- especially WIND.

Past Experience:

Watch for bug killed fuels. Anticipate volatile transition from surface to crown fire with spotting that can carry fire brands 2 miles or more. FDRA predominant winds are SW. The Ahorn Fire 7/11/2007 (52,505) had short range spotting for a week, then demonstrated extreme fire behavior after a wind shift from the SW. The Snow Talon Cpx 8/13/03 demonstrated rapid fire growth on IA. WX forecasts are available at <http://www.wrh.noaa.gov/firewx>. FDRA consists of the Rocky Mountain Ranger District and the Lincoln Ranger Districts of the Helena - Lewis and Clark NF.

Responsible Agency: USFS MT - Helena - Lewis and Clark
 FF+4.2 build 142298 07/18/2016-17:18 (C:\Users\tscollier\Desktop\NFDRS\NFDRS...West)

Design by NWCG Fire Danger Working Team